



Quick Installation Guide

300Mbps Wireless N Ceiling Mount Access Point CAP300

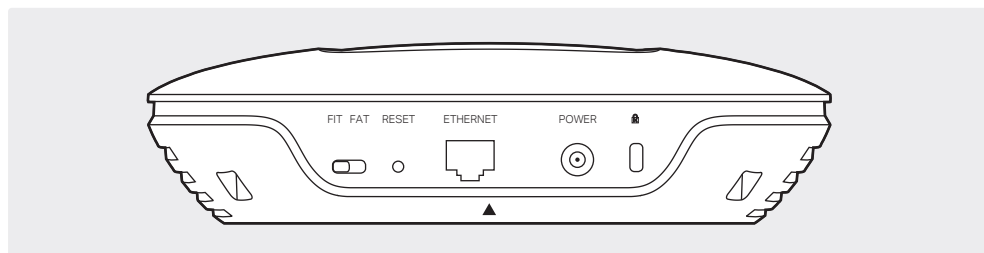


LED Indication



- **Solid green**
The device is working properly or the connection between the device and the wireless controller is established.
- **Flashing red**
System errors. RAM, Flash, Ethernet, WLAN or firmware may be malfunctioning.
- **Flashing green (FIT mode only)**
The device is not connected to a wireless controller.
- **Flashing yellow**
Firmware update is in progress. Do not disconnect or power off the device.
- **Double-flashing red, green, yellow**
The device is being reset to its factory default settings.

Interface Panel



FIT/FAT
The FIT/FAT switch is used to toggle the AP's working mode. The toggling of the mode will reboot the AP.
In FIT mode, APs can be centrally managed by TP-Link's wireless controller. The default FIT mode is used when you want to deploy a large wireless network.
In FAT mode, you can log in to AP's webpage to manage the AP alone. The FAT mode is used in a small wireless network. The AP cannot be managed by wireless controller in FAT mode.

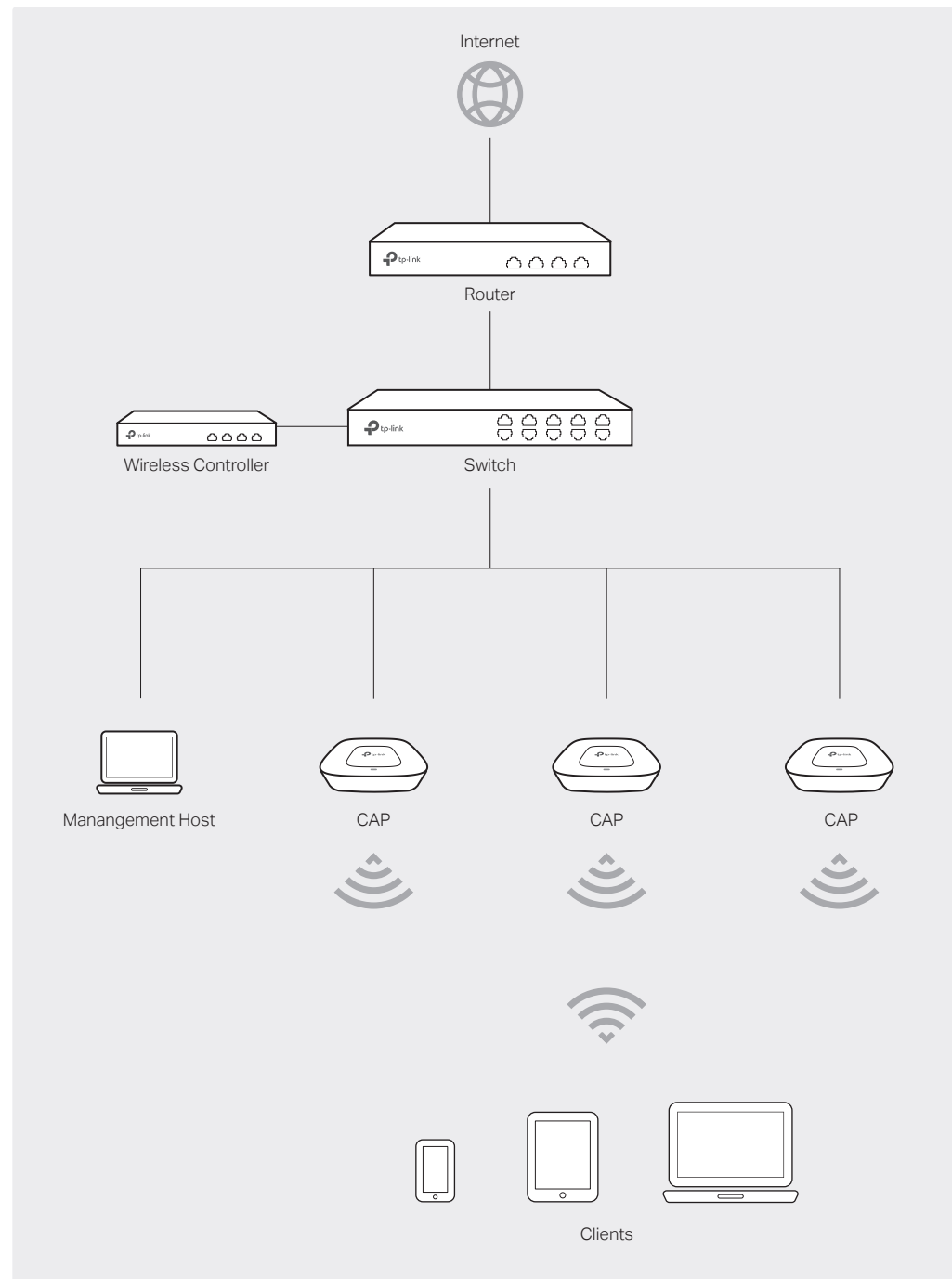
RESET
With the device powered on, press and hold the button for about 8 seconds until the LED flashes red, then release the button. The device will restore to factory default settings.

ETHERNET
The port is used to connect to a router or a switch to transmit data or to a PSE (Power Sourcing Equipment), such as a PoE switch, for both data transmission and Power over Ethernet (PoE) through Ethernet cabling.

POWER
The port is used to connect the CAP to a power socket via the provided power adapter.

Kensington
The Kensington lock port is used to connect to a Kensington lock to secure your CAPs.

1 Typical Network Topology (FIT mode)

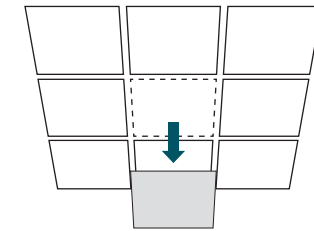
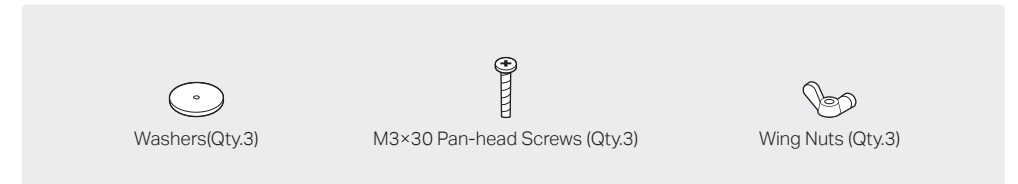


- The wireless controller can be in the same or different network segment with the CAPs.

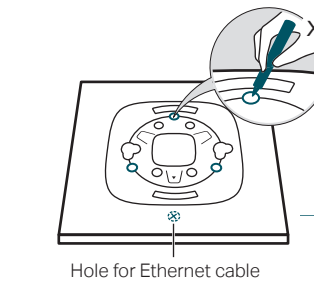
2 Hardware Installation

The CAP can be ceiling-mounted or wall-mounted.
Note: Please take the power supply into consideration before the installation.

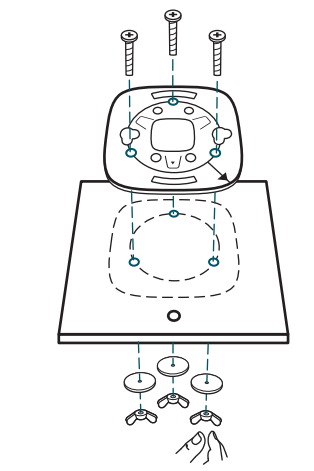
Option 1: Ceiling Mounting



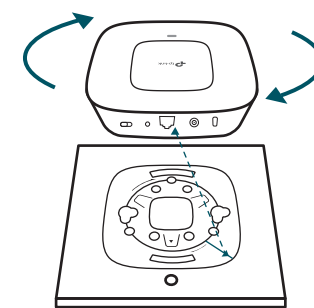
1
Remove the ceiling tile.



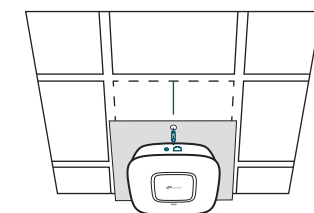
2
Place the mounting bracket in the center of the ceiling tile. Mark three positions for the screw holes and a position for the Ethernet cable hole. Drill three 4mm holes for the screws and a 25mm hole for the Ethernet cable at the marked positions.



3
Secure the mounting bracket to the ceiling tile using three M3x30 pan-head screws, washers and wing nuts, as shown on the left.



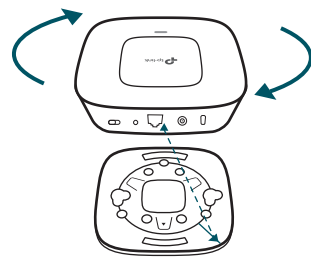
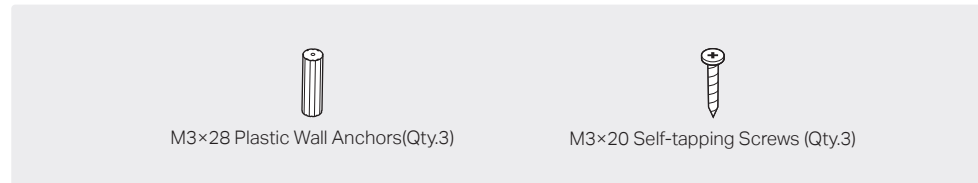
4
Attach the CAP to the mounting bracket by aligning the arrow mark ▼ on the CAP with the arrow mark ↓ on the mounting bracket, then rotate the CAP until it locks into place, as shown on the left.



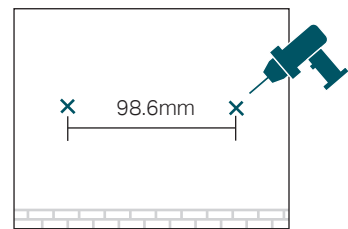
5
Feed the Ethernet cable through the hole and set the ceiling tile back into place. Connect the Ethernet cable to the ETHERNET port.

Option 2: Wall Mounting

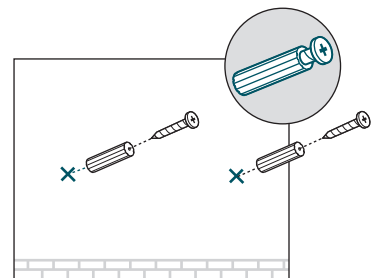
Note: We recommend that you install the CAP with the Ethernet port downward.



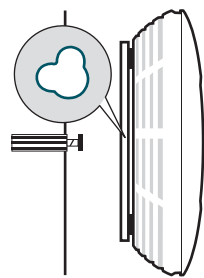
1 Attach the CAP to the mounting bracket by aligning the arrow mark ▼ on the CAP with the arrow mark ↓ on the mounting bracket, then rotate the CAP until it locks into place, as shown on the left.



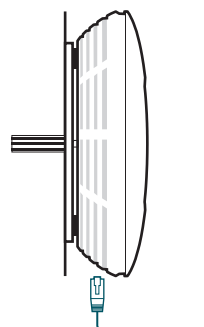
2 Make two small pencil marks on the wall. Make sure the two marks are level and 98.6mm apart. Drill a 6mm hole through the center of each mark.



3 Insert the plastic wall anchors into the 6mm holes and drive the self-tapping screws into the anchors. Do not drive the screws all the way in and leave enough clearance to hang the CAP.



4 Hang the CAP on the screws. Make sure the CAP is firmly seated against the wall.



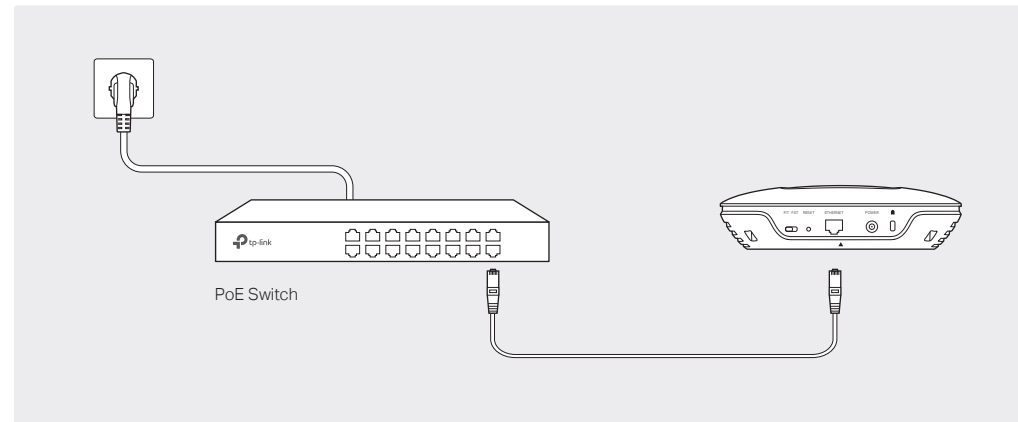
5 Connect the Ethernet cable to the ETHERNET port on the CAP.

3 Power Supply

The CAP can be powered via a PSE device (such as a PoE switch) or a power adapter.

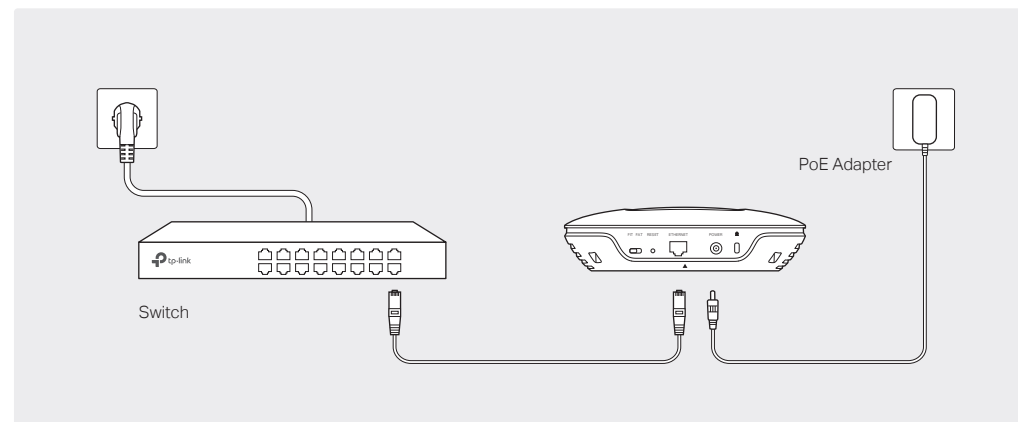
Via PoE Switch

Connect an Ethernet cable from the PoE switch to the ETHERNET port.



Via Power Adapter

Plug one end of the provided power adapter into the POWER port of the CAP and the other end to a standard electrical wall outlet.



4 Software Configuration

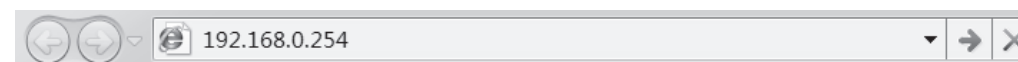
In FIT Mode

In FIT mode, CAP should be managed by the wireless controller. Please refer to the Wireless Controller User Guide to learn more information about configuring and using the controller.

Note: The IP address of the wireless controller must be reachable for the CAPs in the network.

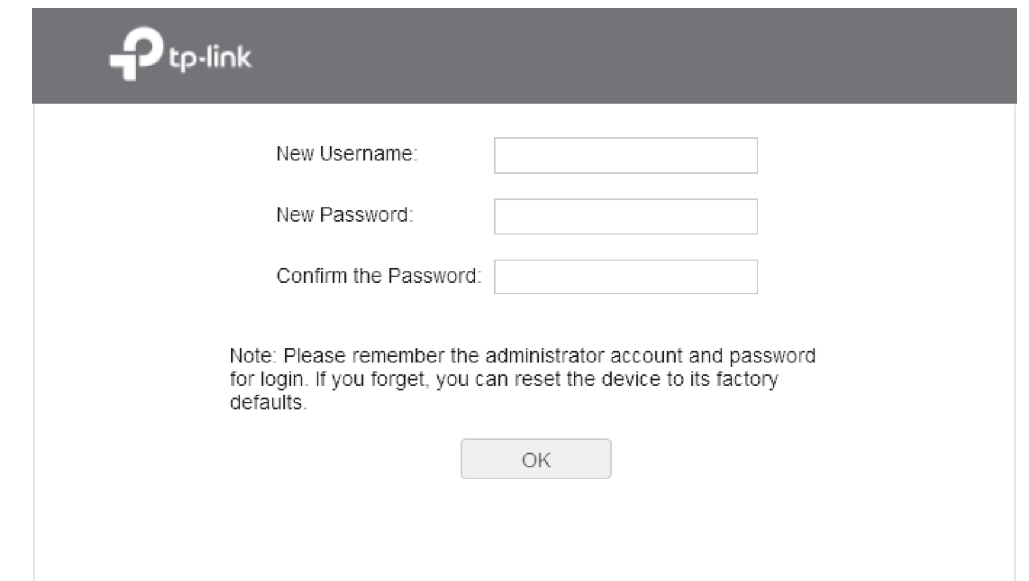
In FAT Mode

1 Launch a web browser and enter 192.168.0.254 in the address bar.

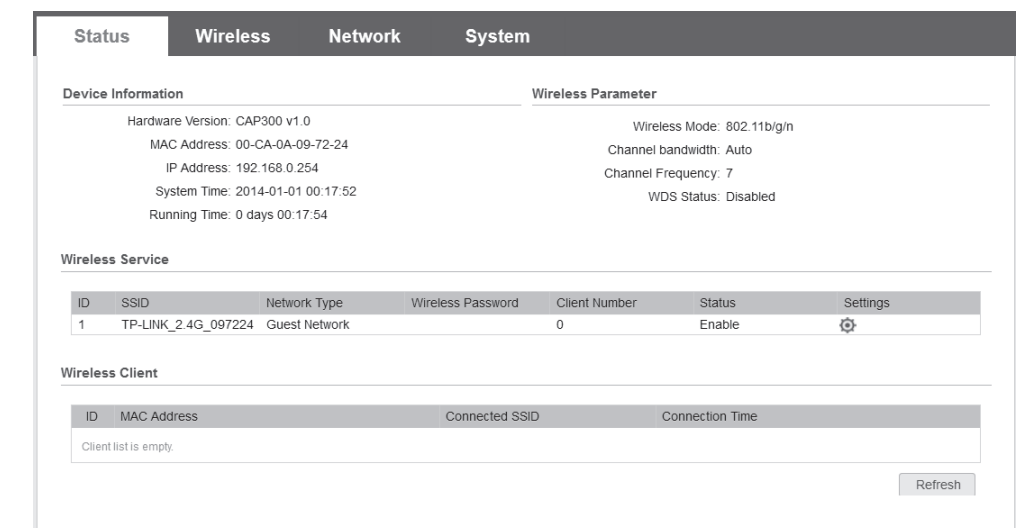


Note: To log in to the device, the IP address of your PC should be set in the same subnet addresses of the device. The IP address is 192.168.0.x ("x" is any number from 1 to 253). Subnet Mask is 255.255.255.0.

2 Create a new username and password for login, and then click OK.



3 The webpage will be shown as below. Click the menu bar to configure the corresponding parameters.



For detailed configuration, please refer to the User Guide. You can download it from <http://www.tp-link.com/en/support> in the download center.



For technical support and other information, please visit <http://www.tp-link.com/support>, or simply scan the QR code.

The products of TP-Link partly contain software code developed by third parties, including software code subject to the GNU General Public License ("GPL"). As applicable, the terms of the GPL and any information on obtaining access to the respective GPL Code used in TP-Link products are available to you in GPL-Code-Centre under (<http://www.tp-link.com/en/support/gpl/>). The respective programs are distributed WITHOUT ANY WARRANTY and are subject to the copyrights of one or more authors. For details, see the GPL Code and other terms of the GPL.