



Quick Installation Guide

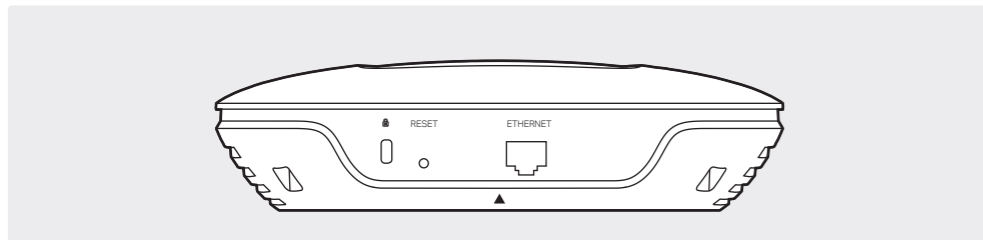
Wireless N Access Point
EAP110

LED Indication



- **Solid green**
The device is working properly.
- **Flashing yellow**
Firmware update is in progress. Do not disconnect or power off the device.
- **Flashing red**
System errors. RAM, Flash, Ethernet, WLAN or firmware may be malfunctioning.
- **Double-flashing red, green, yellow**
The device is being reset to its factory default settings.

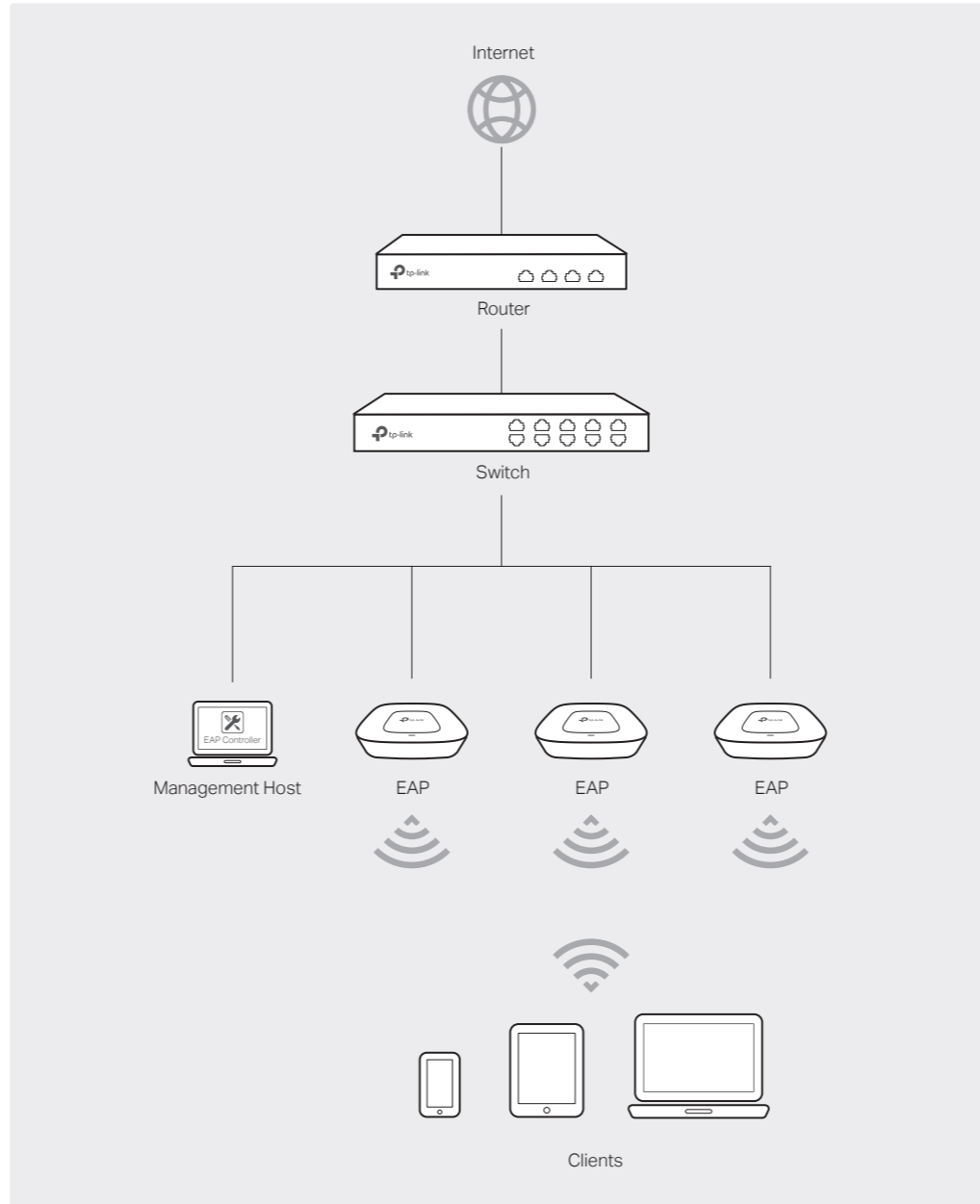
Interface Panel



RESET
With the device powered on, press and hold the button for about 8 seconds until the LED flashes red, then release the button. The device will restore to factory default settings.

ETHERNET
The port is to connect to the POE port of the provided PoE adapter for both data transmission and power supply through Ethernet cabling.

1 Typical Network Topology

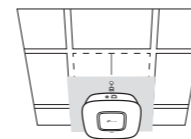


- A DHCP server (typically a router) is required to assign IP addresses to the EAPs and clients in your local network.
- The management host can be in the same or different network segment with the EAPs.

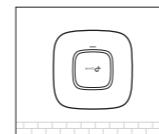
2 Hardware Installation

The EAP can be ceiling-mounted or wall-mounted.

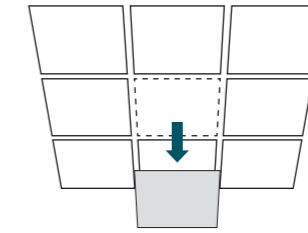
Option 1: Ceiling Mounting



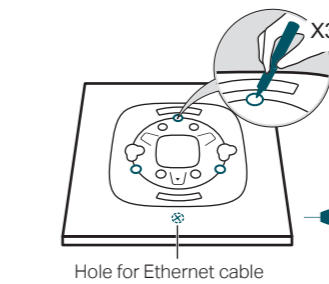
Option 2: Wall Mounting



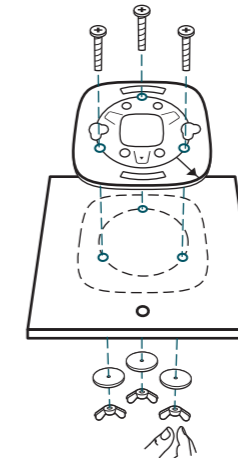
Option 1: Ceiling Mounting



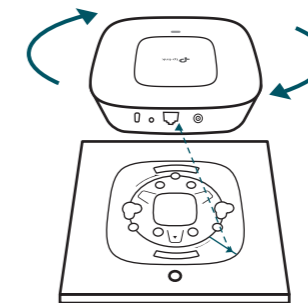
1 Remove the ceiling tile.



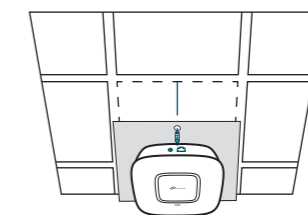
2 Place the mounting bracket in the center of the ceiling tile. Mark three positions for the screw holes and a position for the Ethernet cable hole. Drill three 4mm holes for the screws and a 25mm hole for the Ethernet cable at the marked positions.



3 Secure the mounting bracket to the ceiling tile using three M3x30 pan-head screws, washers and wing nuts, as shown on the left.



4 Attach the EAP to the mounting bracket by aligning the arrow mark ▼ on the EAP with the arrow mark ↓ on the mounting bracket, then rotate the EAP until it locks into place, as shown on the left.



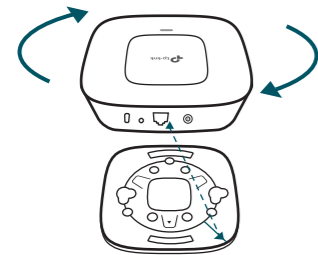
5 Feed the Ethernet cable through the hole and set the ceiling tile back into place. Connect the Ethernet cable to the ETHERNET port.

Option 2: Wall Mounting

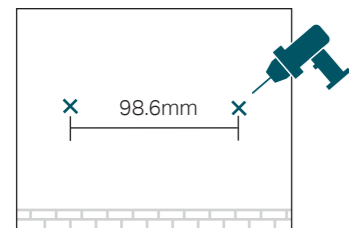
Note: Install the EAP with the Ethernet port downward.

M3×28 Plastic Wall Anchors(Qty.3)

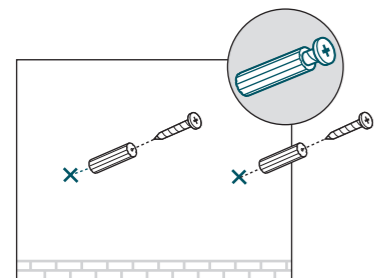
M3×20 Self-tapping Screws (Qty.3)



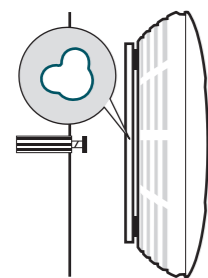
1 Attach the EAP to the mounting bracket by aligning the arrow mark ▼ on the EAP with the arrow mark ↑ on the mounting bracket, then rotate the EAP until it locks into place, as shown on the left.



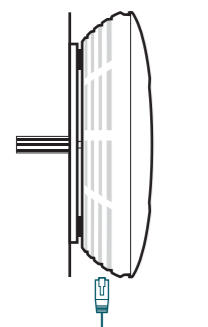
2 Make two small pencil marks on the wall. Make sure the two marks are level and 98.6mm apart. Drill a 6mm hole through the center of each mark.



3 Insert the plastic wall anchors into the 6mm holes and drive the self-tapping screws into the anchors. Do not drive the screws all the way in and leave enough clearance to hang the EAP.



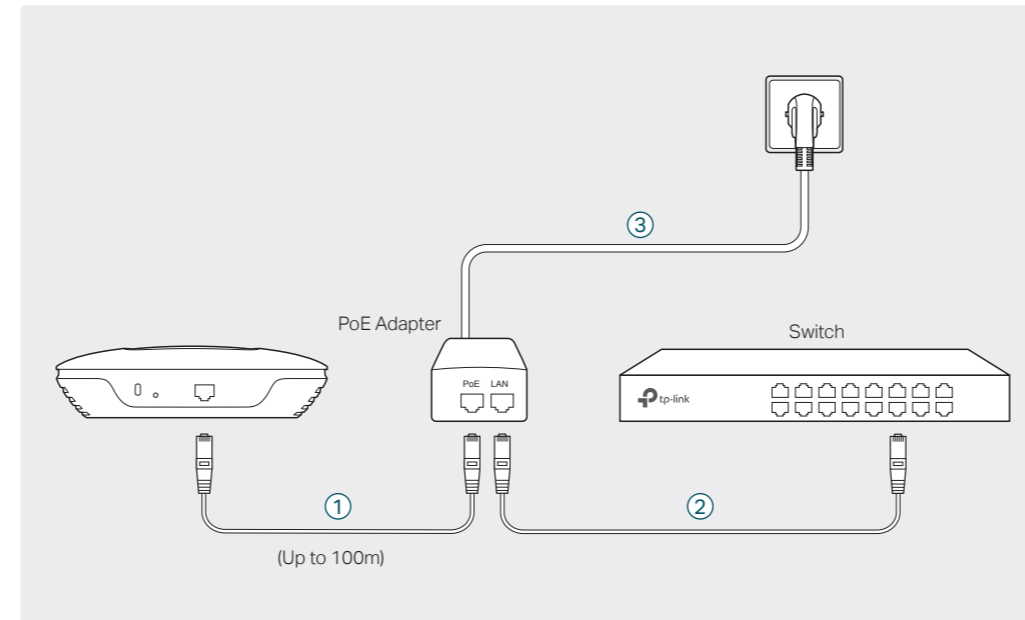
4 Hang the EAP on the screws. Make sure the EAP is firmly seated against the wall.



5 Connect the Ethernet cable to the ETHERNET port on the EAP.

3 Power Supply

The EAP can be powered via the provided PoE adapter.

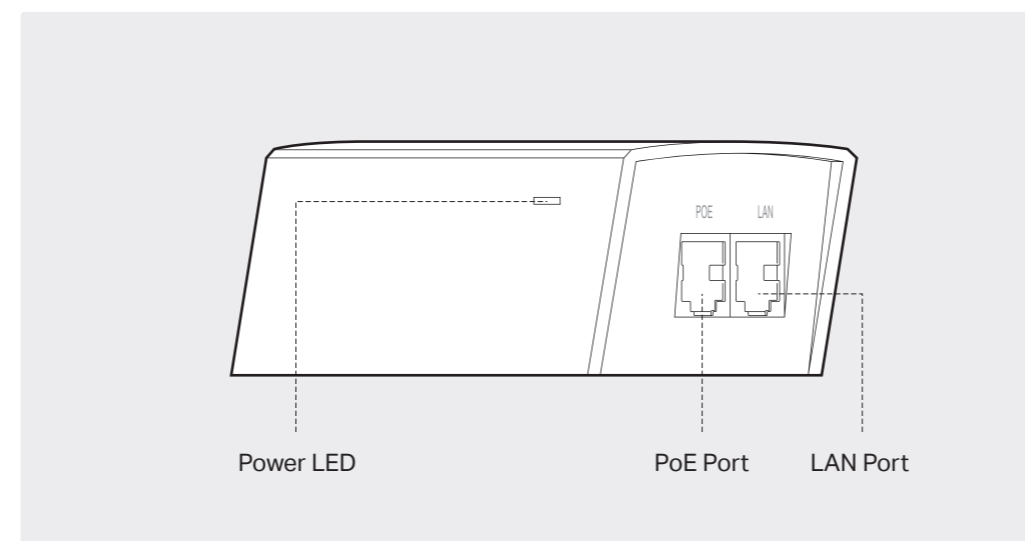


① Connect the ETHERNET port to the POE port of the PoE adapter using an Ethernet cable. The cable length can be up to 100 meters.

② Connect the Ethernet cable from the switch to the LAN port of the PoE adapter.

③ Plug the female connector of the provided power cord into the power adapter, and the male connector to a power outlet.

Passive PoE Adapter



Power LED

The Power LED indicates the status of the electric current: green (0-0.8A), red (0.8A-1A).

PoE Port

This port is used to connect to the ETHERNET port of EAP110.

LAN Port

This Port is used to connect to your LAN.

4 Software Configuration

To quickly set up a wireless network connection with mass EAPs, please follow the steps below.

Note: The IP address of the management host must be reachable for the EAPs in the network. In this example, the management host is in the same LAN as the EAPs.

Step 1: Installing the EAP Controller

On the management host, download the EAP Controller installation file from the product support page at www.tp-link.com. Run the file and follow the wizard to install the EAP Controller.

Step 2: Configuring the EAP Controller

Launch the EAP Controller and follow the configuration wizard to create a primary wireless network. After the wizard is finished, a login screen will appear. Enter the admin name and password you created and click Sign In.

Step 3: Adopting the EAP devices

Adopt the EAP devices in the Controller management interface to change their status from Pending to Connected.

For More Configurations

You can now manage your wireless network and view network statistics using the EAP Controller. Please refer to the EAP Controller User Guide for more information about configuring and using the Controller software.



For technical support and other information, please visit <http://www.tp-link.com/support>, or simply scan the QR code.



The products of TP-Link partly contain software code developed by third parties, including software code subject to the GNU General Public License ("GPL"). As applicable, the terms of the GPL and any information on obtaining access to the respective GPL Code used in TP-Link products are available to you in GPL-Code-Centre under (<http://www.tp-link.com/en/support/gpl/>). The respective programs are distributed WITHOUT ANY WARRANTY and are subject to the copyrights of one or more authors. For details, see the GPL Code and other terms of the GPL.