

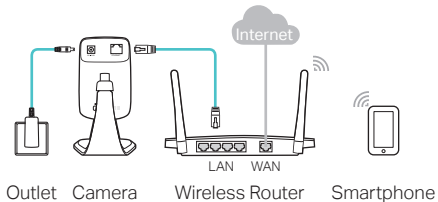


## Wi-Fi Camera

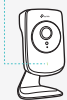
See more · Be sure

1

Connect the camera to the network your smartphone is on.



### System LED



- Flashing red: System starting
- Solid red: Network not connected
- Solid green: Network connected



Smartphone requirements:  
Android 3.0 or higher  
iOS 7.0 or higher

2

Download and install the [tpCamera](#) app.

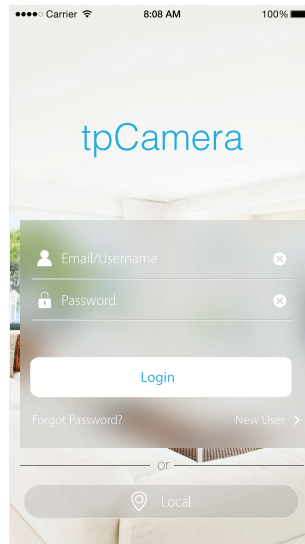


OR



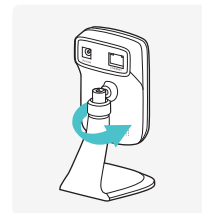
3

Launch tpCamera, log in with your TP-Link ID or create one, then follow the app instructions to set up your new camera.

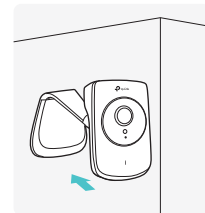
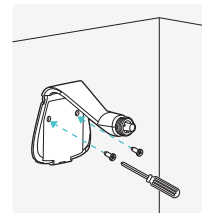


Relocate the camera to your desired location. You can either place it on a flat surface, or mount it with the provided adhesive or with screws (not included).

1. Unscrew the camera head.
2. Remove the base cover.



3. Use two screws to secure the base.
4. Put the base cover and camera head back on.

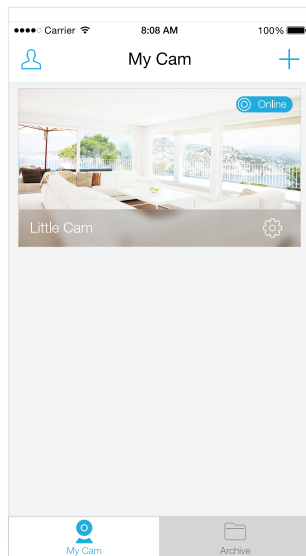


More  
about TP-Link Wi-Fi Camera

## How to view the camera

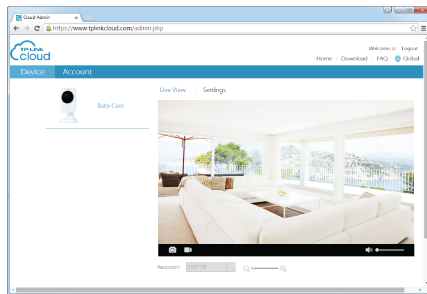
### Via Smartphone:

On the **My Cam** screen, tap your camera to view the live video.



### Via Computer:

Log in to the TP-Link Cloud website (<https://www.tplinkcloud.com>), and click your camera to view the live video.



## How to use the WPS/RESET button

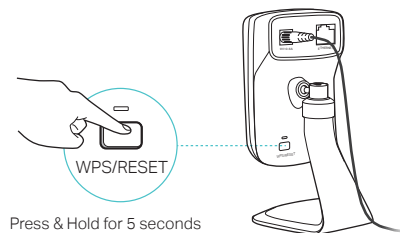
### WPS (Wi-Fi Protected Setup):

If your Wi-Fi router supports WPS, you can connect the camera to your Wi-Fi network using WPS. For details, see the camera's User Guide.

### Reset:

#### ⓘ Note

Resetting a registered camera will remove it from your TP-Link ID.



While the camera is powered on, press the **WPS/RESET** button for **5 seconds** until the System LED on the front panel goes off. The camera will reset and reboot.

## Get more with the camera

### Get notifications when motion is detected

Log in to the web management page of your camera to set Motion Detection and Notification Delivery. For details and more advanced configurations, see the camera's User Guide.

### View all of your cameras on one screen

Download and install the TP-Link Camera Control utility to view and manage multiple cameras on one screen. For details, see the Camera Control User Guide.

### Downloads

For related user guides, Camera Control utility, camera firmware, and other support, please visit the product page at <http://www.tp-link.com>.

### Support

For technical support and other information, please visit <http://www.tp-link.com/support>.