

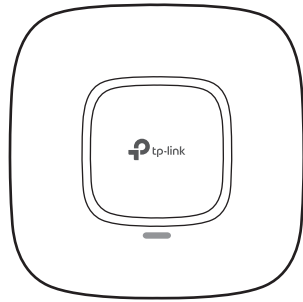


Quick Installation Guide

Wireless N Access Point
EAP115

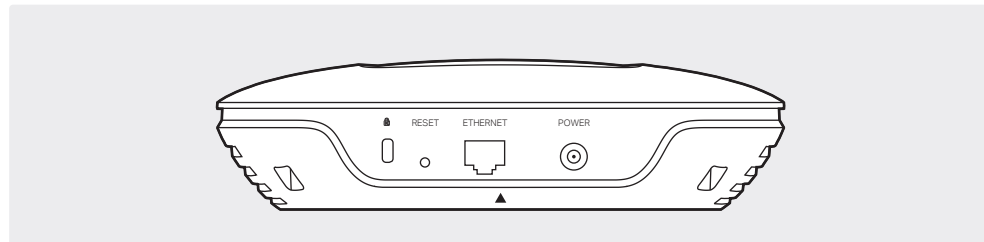


LED Indication



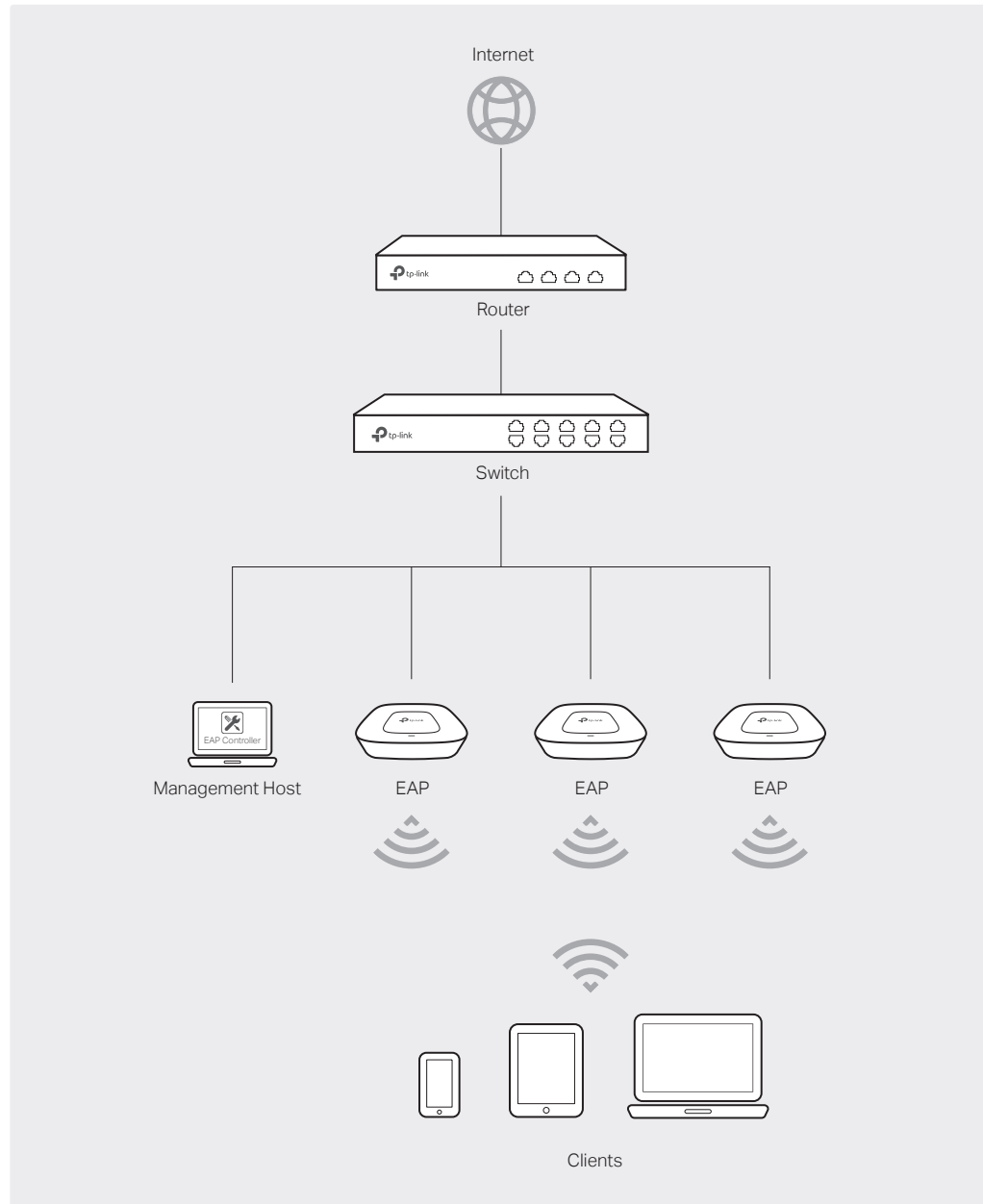
- **Solid green**
The device is working properly.
- **Flashing yellow**
Firmware update is in progress. Do not disconnect or power off the device.
- **Flashing red**
System errors. RAM, Flash, Ethernet, WLAN or firmware may be malfunctioning.
- **Double-flashing red, green, yellow**
The device is being reset to its factory default settings.

Interface Panel



- RESET**
With the device powered on, press and hold the button for about 8 seconds until the LED flashes red, then release the button. The device will restore to factory default settings.
- ETHERNET**
The port is used to connect to a router or a switch to transmit data or to a PSE (Power Sourcing Equipment), such as a PoE switch, for both data transmission and Power over Ethernet (PoE) through Ethernet cabling.
- POWER**
This port is used to connect to the provided power adapter to power the EAP. The other end of the power adapter connects to a standard electrical wall outlet.

1 Typical Network Topology

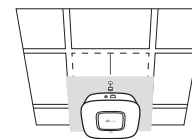


- A DHCP server (typically a router) is required to assign IP addresses to the EAPs and clients in your local network.
- The management host can be in the same or different network segment with the EAPs.

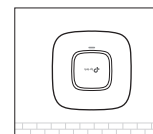
2 Hardware Installation

The EAP can be ceiling-mounted or wall-mounted.

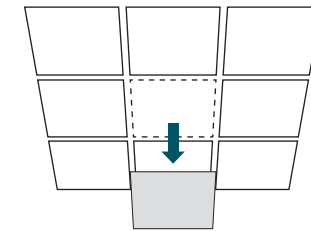
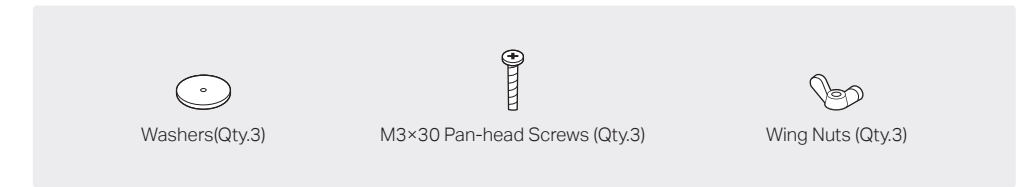
Option 1: Ceiling Mounting



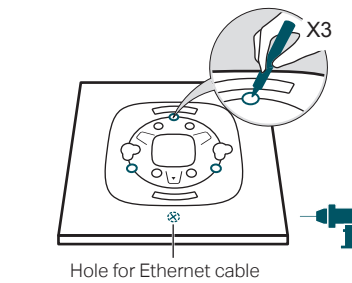
Option 2: Wall Mounting



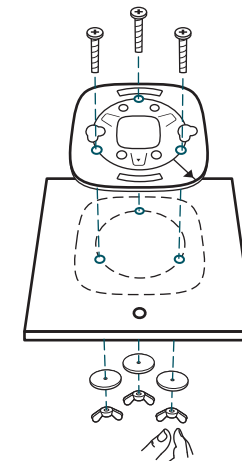
Option 1: Ceiling Mounting



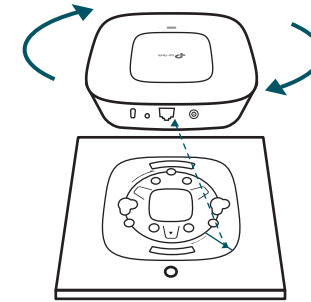
1 Remove the ceiling tile.



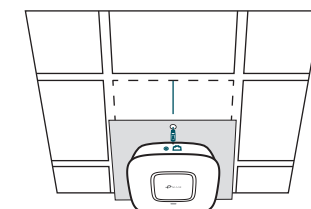
2 Place the mounting bracket in the center of the ceiling tile. Mark three positions for the screw holes and a position for the Ethernet cable hole. Drill three 4mm holes for the screws and a 25mm hole for the Ethernet cable at the marked positions.



3 Secure the mounting bracket to the ceiling tile using three M3x30 pan-head screws, washers and wing nuts, as shown on the left.



4 Attach the EAP to the mounting bracket by aligning the arrow mark ▼ on the EAP with the arrow mark ↓ on the mounting bracket, then rotate the EAP until it locks into place, as shown on the left.



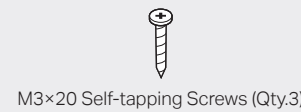
5 Feed the Ethernet cable through the hole and set the ceiling tile back into place. Connect the Ethernet cable to the ETHERNET port.

Option 2: Wall Mounting

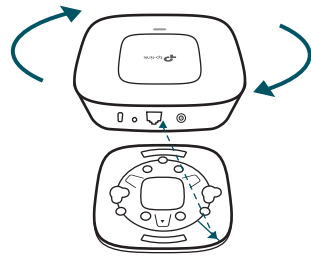
Note: Install the EAP with the Ethernet port downward.



M3x28 Plastic Wall Anchors (Qty.3)

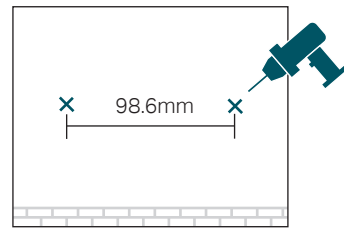


M3x20 Self-tapping Screws (Qty.3)



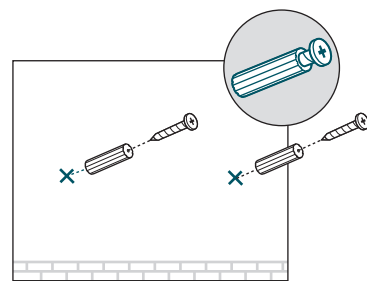
1

Attach the EAP to the mounting bracket by aligning the arrow mark ▼ on the EAP with the arrow mark ↓ on the mounting bracket, then rotate the EAP until it locks into place, as shown on the left.



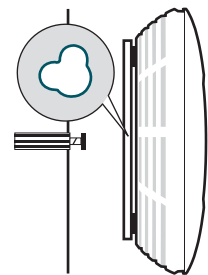
2

Make two small pencil marks on the wall. Make sure the two marks are level and 98.6mm apart. Drill a 6mm hole through the center of each mark.



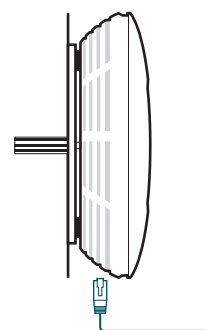
3

Insert the plastic wall anchors into the 6mm holes and drive the self-tapping screws into the anchors. Do not drive the screws all the way in and leave enough clearance to hang the EAP.



4

Hang the EAP on the screws. Make sure the EAP is firmly seated against the wall.



5

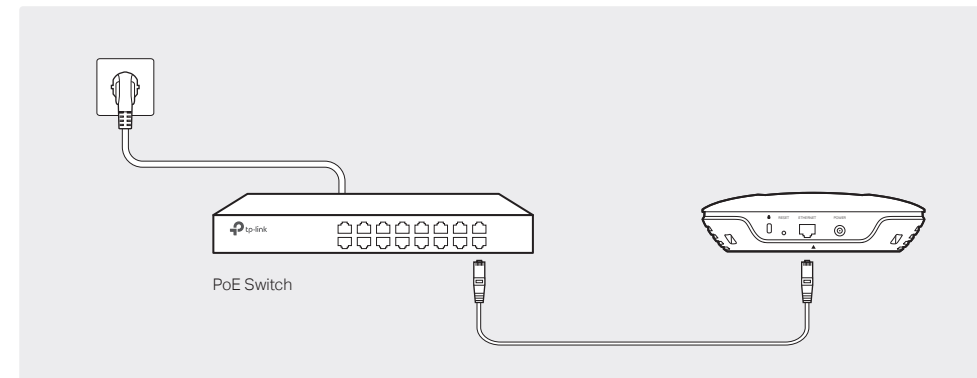
Connect the Ethernet cable to the ETHERNET port on the EAP.

3 Power Supply

The EAP can be powered via a PSE device (such as a PoE switch) or a power adapter.

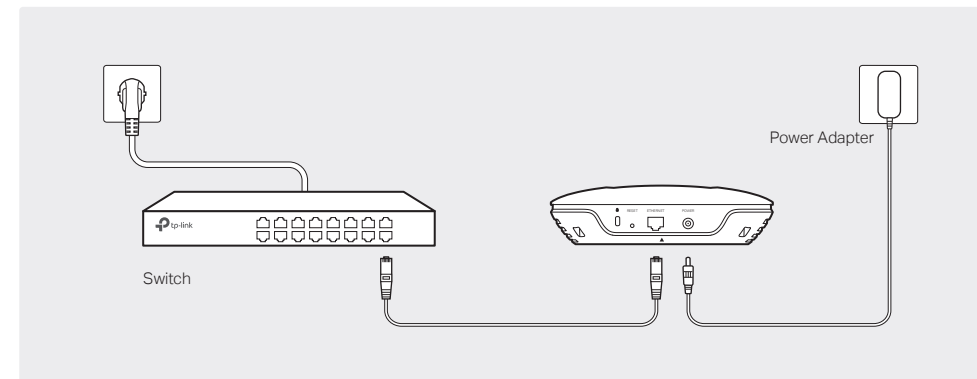
Via PoE Switch

Connect an Ethernet cable from the PoE switch to the ETHERNET port.



Via Power Adapter

Plug one end of the provided power adapter into the POWER port of the EAP and the other end to a standard electrical wall outlet.



4 Software Configuration

You can manage the EAPs via EAP Controller or in Cluster mode.

Via EAP Controller

Note: The IP address of the management host must be reachable for the EAPs in the network. In this example, the management host is in the same LAN as the EAPs.

Step 1: Installing the EAP Controller

On the management host, download the EAP Controller installation file from the product support page at www.tp-link.com. Run the file and follow the wizard to install the EAP Controller.

Step 2: Configuring the EAP Controller

Launch the EAP Controller and follow the configuration wizard to create a primary wireless network. After the wizard is finished, a login screen will appear. Enter the admin name and password you created and click Sign In.

Step 3: Adopting the EAP devices

Adopt the EAP devices in the Controller management interface to change their status from Pending to Connected.

For More Configurations

You can now manage your wireless network and view network statistics using the EAP Controller. Please refer to the EAP Controller User Guide to learn more information about configuring and using the Controller software.

Via Cluster Mode

Note:

1. The EAPs forming a cluster must be of the same model and in the same LAN.
2. EAPs with the same cluster name will form a cluster.
3. The management host must be in the same LAN with the EAPs.

Step 1: Logging into the EAP

On the management host, open a browser and type the IP address (assigned by the DHCP server) of the EAP in the address field, and press the Enter key. Fill in admin (all lowercase) for both username and password to login.

Step 2: Choosing the Work Mode

Choose the work mode as Cluster in the drop-down box, and the EAP will reboot and switch to Cluster mode. The EAPs with the same cluster name will form a cluster and one of them will be elected as the Master EAP automatically.

Step 3: Managing the EAPs

On the management host, visit any EAP's IP address and you will be redirected to the Master EAP's web management page, where you can manage each EAP in the cluster.

For More Configurations

You can now manage your wireless network and view network statistics in cluster mode. For more information about Cluster mode, the User Guide from this product's Support page at www.tp-link.com.



For technical support and other information, please visit <http://www.tp-link.com/support>, or simply scan the QR code.

The products of TP-Link partly contain software code developed by third parties, including software code subject to the GNU General Public License ("GPL"). As applicable, the terms of the GPL and any information on obtaining access to the respective GPL Code used in TP-Link products are available to you in GPL-Code-Centre under (<http://www.tp-link.com/en/support/gpl/>). The respective programs are distributed WITHOUT ANY WARRANTY and are subject to the copyrights of one or more authors. For details, see the GPL Code and other terms of the GPL.