

Quick Installation Guide

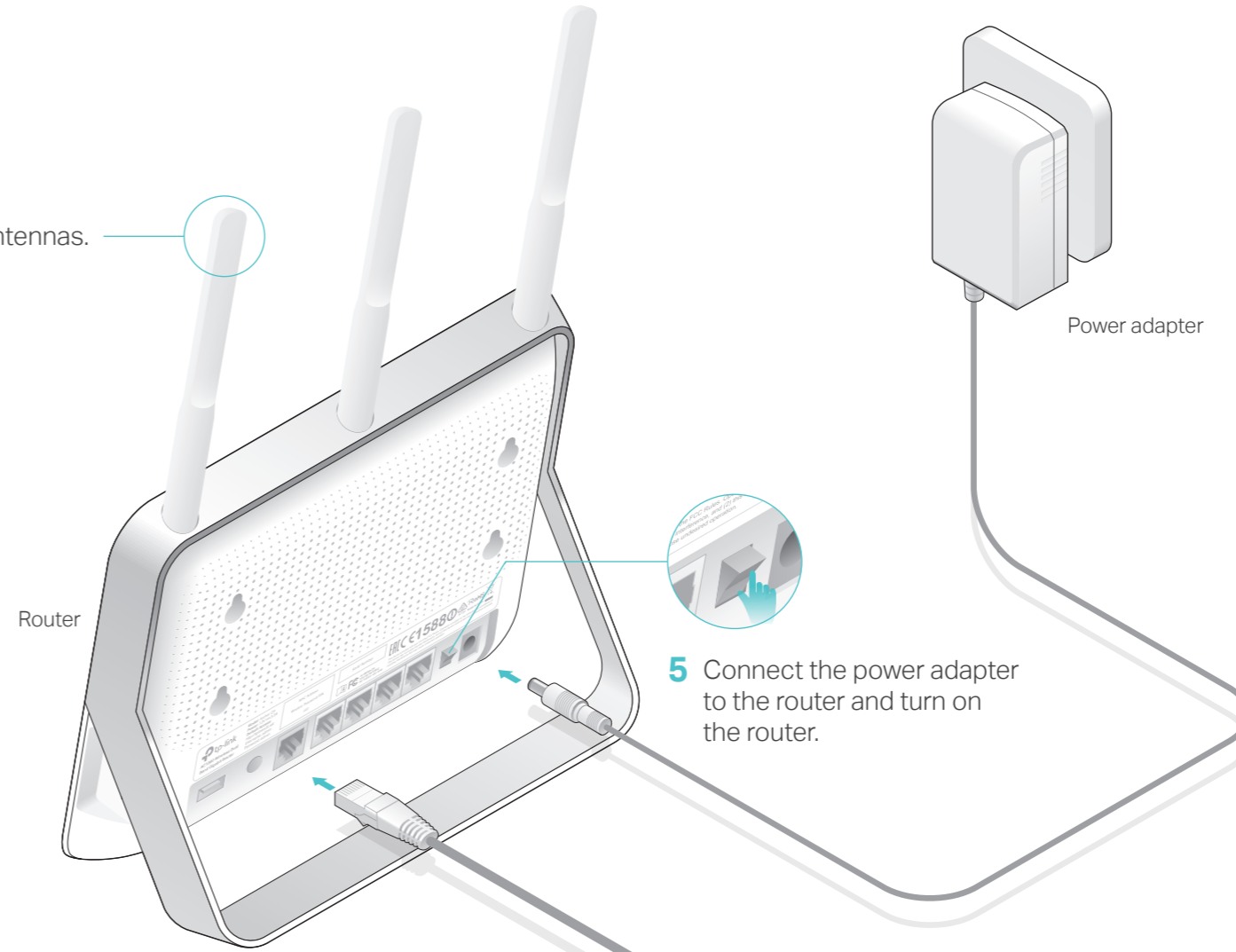
AC1900 Wireless Dual Band Gigabit Router

Archer C9

Connect the Hardware

If your Internet connection is through an Ethernet cable from the wall instead of through a DSL / Cable / Satellite modem, connect the Ethernet cable directly to the router's Internet port, and then follow Step 1, 5 and 6 to complete the hardware connection.

1 Install the antennas.

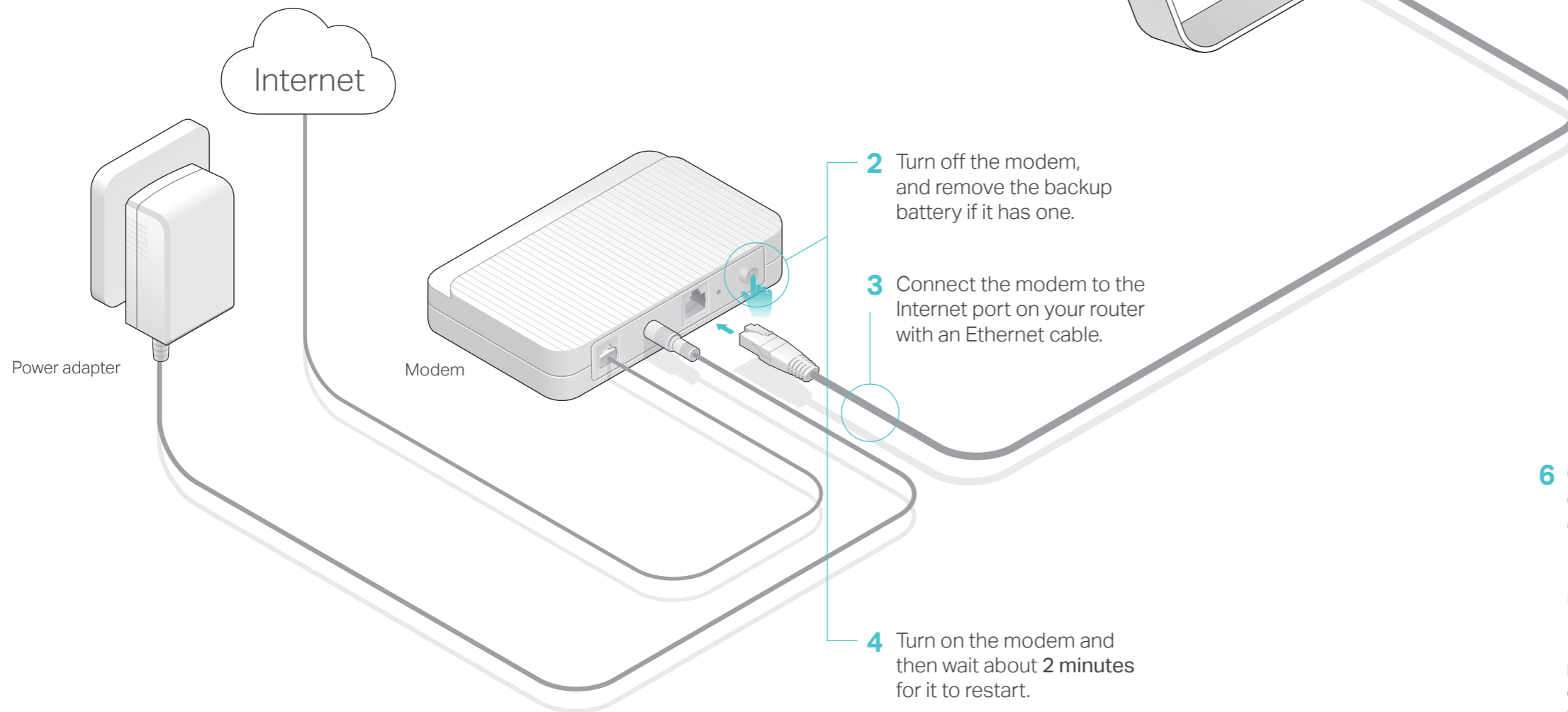


5 Connect the power adapter to the router and turn on the router.

2 Turn off the modem, and remove the backup battery if it has one.

3 Connect the modem to the Internet port on your router with an Ethernet cable.

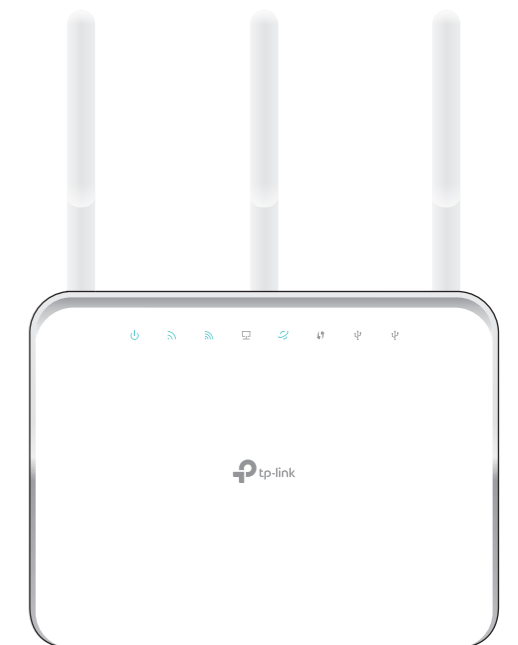
4 Turn on the modem and then wait about 2 minutes for it to restart.



6 Confirm that the following LEDs are on and solid to verify the hardware connection is correct.



Note: If the 2.4G LED and 5G LED are off, please press the WiFi button on the side panel for 2 seconds and both the LEDs should turn solid on in a few seconds.

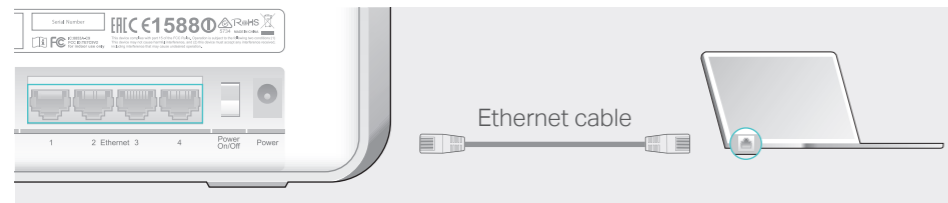


Configure via Web Browser

1. Connect your computer to the router (Wired or Wireless)

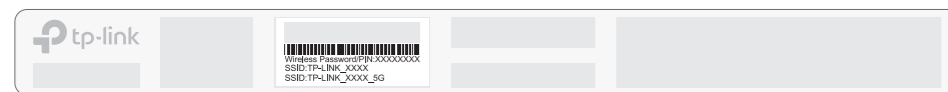
• Wired

Turn off the Wi-Fi on your computer and connect the devices as shown below.

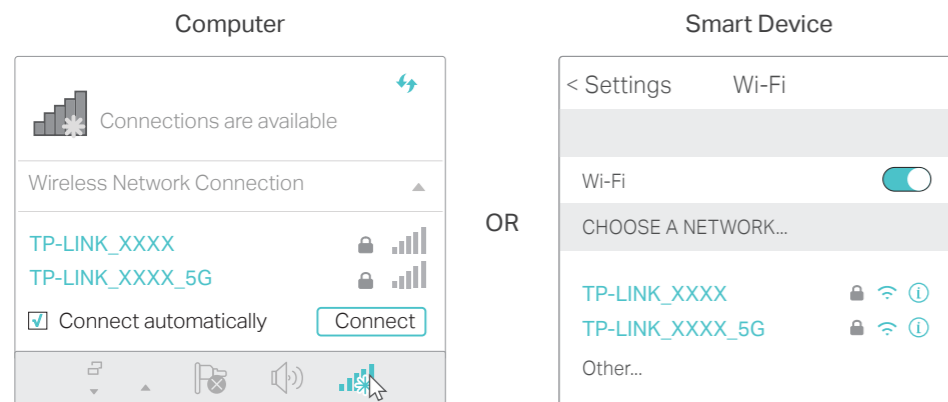


• Wireless

a Find the SSID (network name) and Wireless Password printed on the label at the back of the router.



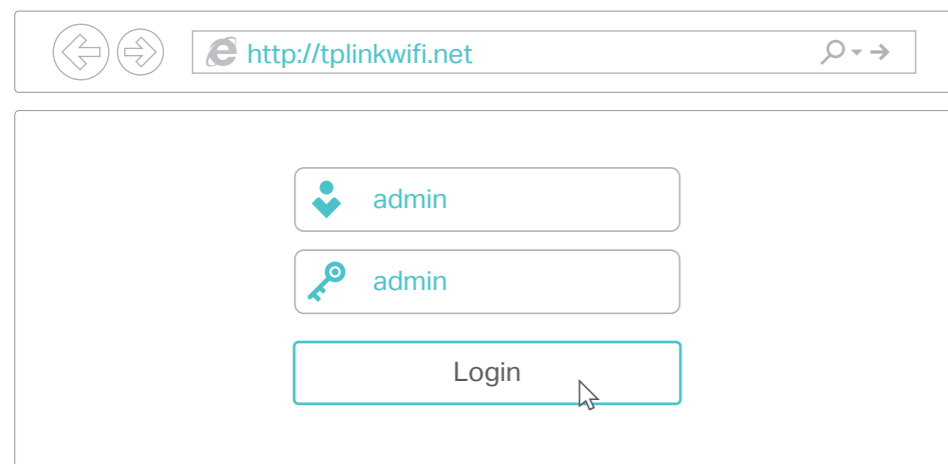
b Click the network icon of your computer or go to Wi-Fi Setting of your smart device, and then select the SSID to join the network.



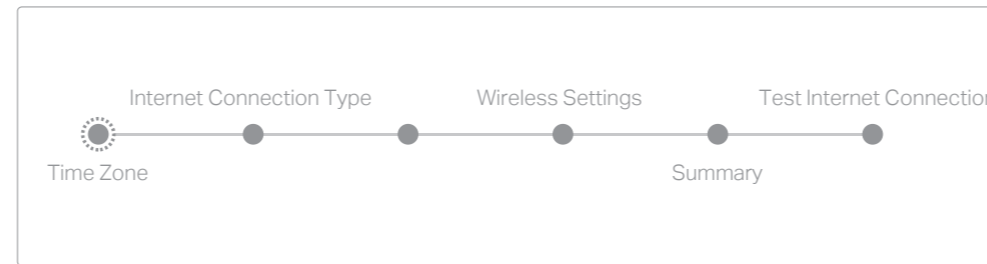
2. Configure the router using a web browser

A Launch a web browser, and enter <http://tplinkwifi.net> or <http://192.168.0.1> in the address bar. Use **admin** for both username and password, and then click **Login**.

Note: If the login window does not appear, please refer to FAQ > Q1.



B Create a new username and password and click **Confirm**. Then follow the step-by-step instructions of the Quick Setup to complete the initial configuration.



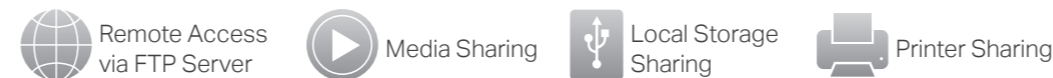
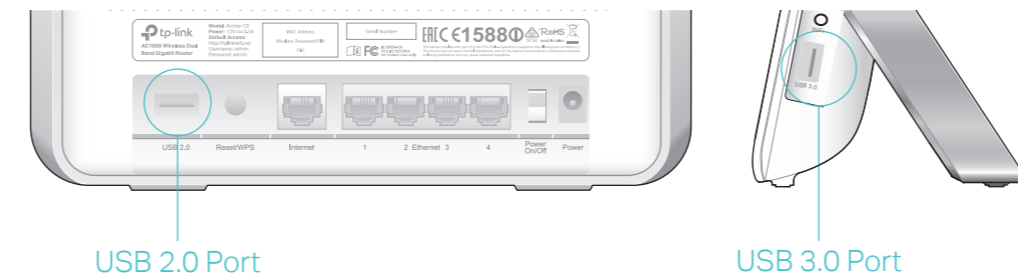
Note: If you are not sure of the Internet Connection Type, please click **Auto Detect**.

Enjoy the Internet!

Moreover, the TP-LINK router supports various features, including Guest Network, Parental Controls, Access Control and more. For details, please refer to the **User Manual** at www.tp-link.com.

USB Features

Use the USB ports for media sharing, storage sharing and printer sharing across your local network. You can also set up an FTP server to access your files remotely through the Internet.



To learn more about the USB features, visit <http://www.tp-link.com/app/usb>, or simply scan the QR code.

Tether App

The TP-LINK Tether app provides a simple, intuitive way to access and manage your router. You can block unwelcome devices, set up Parental Controls, configure your wireless settings and more.



Scan the QR code to download the TP-LINK Tether app from the Apple App Store or Google Play.

FAQ (Frequently Asked Questions)

Q1. What can I do if the login page does not appear?

- If the computer is set to a static or fixed IP address, change the setting to obtain an IP address automatically.
- Verify that <http://tplinkwifi.net> is correctly entered in the web browser. Alternatively, enter <http://192.168.0.1> or <http://192.168.1.1> in the web browser and press **Enter**.
- Use another web browser and try again.
- Reboot your router and try again.
- Disable then re-enable the network adapter being used.

Q2. What can I do if I cannot access the Internet?

- Check if the Internet is working properly by connecting a computer directly to the modem using an Ethernet cable. If it is not, contact your Internet Service Provider.
- Log into the web management page of the router, and go to the **Basic > Network Map** page to check whether the Internet IP address is valid or not. If it is, please run the Quick Setup again; otherwise, recheck the hardware connection.
- Reboot your router and try again.
- For cable modem users, log into the web management page of the router. Go to **Advanced > Network > Internet > MAC Clone**, click **Use Current Computer MAC Address** and click **Save**. Then reboot both the modem and the router.

Q3. How do I restore the router to its factory default settings?

- With the router powered on, press and hold the **Reset/WPS** button on the back until the Power LED blinks.
- Log into the web management page of the router. Go to **Advanced > System tools > Backup & Restore**, and click **Factory Restore**. The router will restore and reboot automatically.

Q4. What can I do if I forgot my web management password?

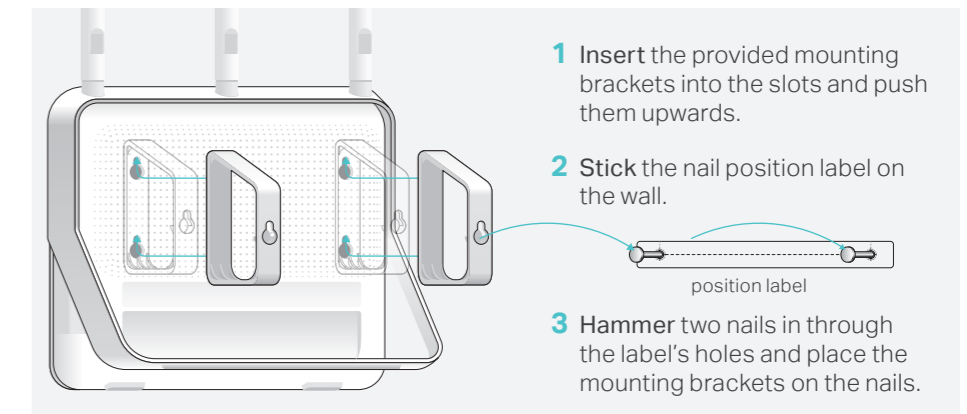
- If you have enabled the Password Recovery function of the router, click **Forgot password?** on the login page and then follow the instructions to reset the username and password to **admin**.
 - Otherwise, refer to FAQ > Q3 to reset the router, and then use the default **admin** (all lowercase) for both username and password to log in.
- Note: For more information about the Password Recovery feature, please refer to the User Manual at www.tp-link.com.

Q5. What can I do if I forgot my wireless network password?

- The factory default wireless password is printed on the label at the back of the router.
- Connect a computer directly to the router using an Ethernet cable. Log into the router's web management page, and go to **Basic > Wireless** to obtain or reset your wireless password.

Q6. How can I mount the router to the wall?

- The two mounting brackets coming with the router can help you mount the router to the wall if needed.



If your questions are not listed here, please refer to the support page at www.tp-link.com.