

Quick Installation Guide

AC600 High Gain Wireless Dual Band USB Adapter
MODEL NO. Archer T2UH

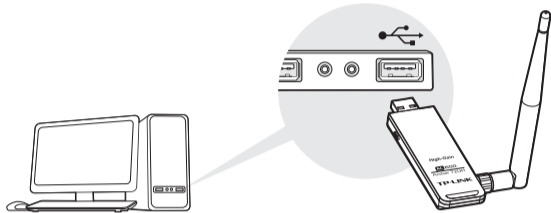
For more information, please visit our website
<http://www.tp-link.com>



7106505773 REV3.0.0

1 Connect to a Computer

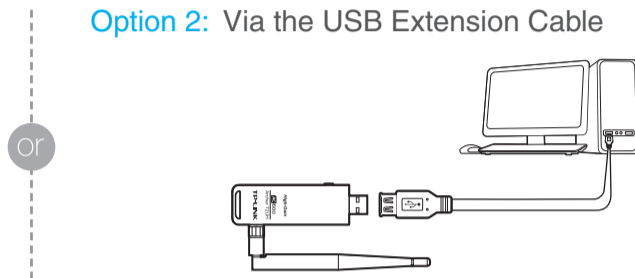
Option 1: Directly



Note:

1. In Windows XP, a Found New Hardware Wizard window will appear when the adapter is detected. Please click Cancel.
2. In Windows 8.1, the adapter is able to search for Wi-Fi networks after being inserted, but it will not function properly until you install the driver and utility below.

Option 2: Via the USB Extension Cable



2 Install Driver and Utility

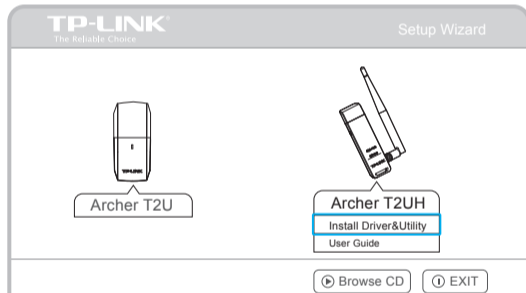
You can also download the driver and utility at www.tp-link.com.

① Insert the CD.



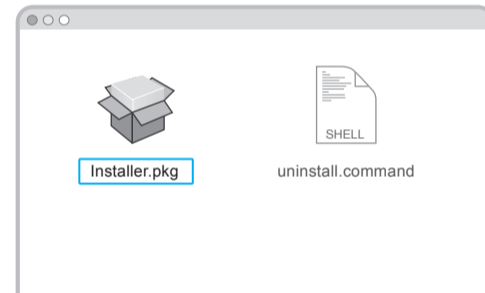
② For Windows

Run the **Autorun.exe** on the pop-up window.
Select **Archer T2UH** and click **Install Driver&Utility**, then follow the InstallShield Wizard to complete the installation.



For Mac OS X


Browse the CD, go to **Archer T2U_T2UH > Mac OS X Driver**, unzip the **TP-LINK_Installer.bmg** file and run the Installer.
Follow the wizard to complete the installation.

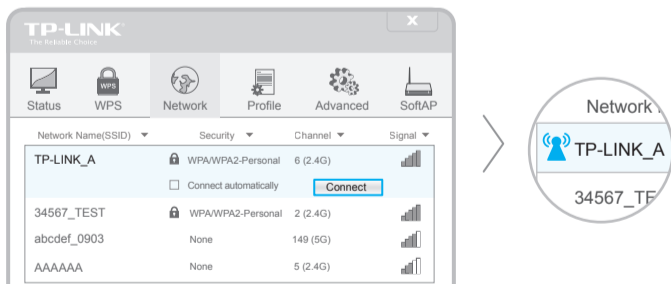


3 Join a Wireless Network

For Windows

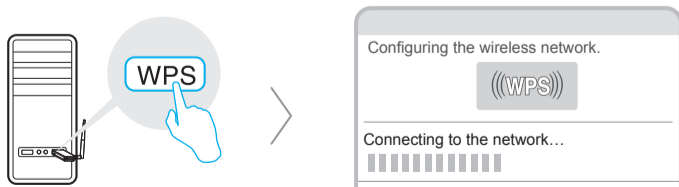
Option 1: Via TP-LINK Utility

Select your Wi-Fi network from the pop-up utility window and click **Connect**. The symbol  indicates a successful connection.



Option 2: Via Wi-Fi Protected Setup (WPS)

- Press the WPS button on your router.
- Within 2 minutes, press and hold the WPS button on the adapter until the following screen appears.



- When you are prompted "Successfully connected to the network by WPS!", click **OK**.

Option 3: Via Windows Wireless Utility

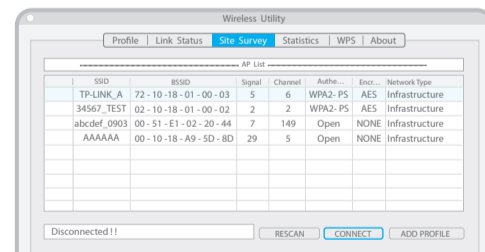
Click  (Network icon) on the system tray, select your Wi-Fi network, and click **Connect**.

Note: In Windows XP, you need to close the TP-LINK Utility before using the Windows Wireless Utility.

For Mac OS X

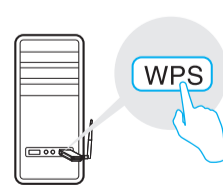
Option 1: Via TP-LINK Utility

- Select the **Site Survey** tab of the pop-up utility window.
- Select your Wi-Fi network and click **CONNECT**. The connection status can be viewed on the Link Status screen.



Option 2: Via Wi-Fi Protected Setup (WPS)

- Press the WPS button on your router.
- Within 2 minutes, press and hold the WPS button on the adapter until its LED starts to flash quickly.



- When the adapter's LED becomes solid on, it is connected to the network successfully by WPS. The WPS status can also be viewed on the WPS screen in TP-LINK Utility.