




# 4G LTE Mobile Wi-Fi

Go Anywhere  
Connect Everywhere



M7310

**4G** 4G LTE  
150Mbps

 Dual Band  
Wi-Fi Hotspot

 tpMiFi  
App

# Highlights

## Share 4G LTE Connection on the Go

The M7310 features a compact, elegant design very suitable for travel, business trips, outdoor activities or wherever you may be.



## All Useful Info at a Color Screen

The 1.44 inch TFT intuitive screen display of M7310 makes it easy to stay within your data budget and helps avoid going over the monthly data cap. The screen also displays other much more information of battery life, signal strength, Wi-Fi status, connected users and more.



- Signal Strength
- Message
- 560MB Data Usage
- 4G/3G/2G Network Type
- Connected Devices
- 50Mb/S ↓ Download Speed
- Data Roaming
- 80% Battery Life

\* Parameters above are only for demonstration.

# Highlights

## Easy Management with the tpMiFi App

With the tpMiFi App, you can easily access and manage the M7310 from your connected iOS/Android devices. The tpMiFi app allows you to establish data limits, control which devices can access your Wi-Fi, send messages, and share media files to/from a removable Micro SD card.



# Features



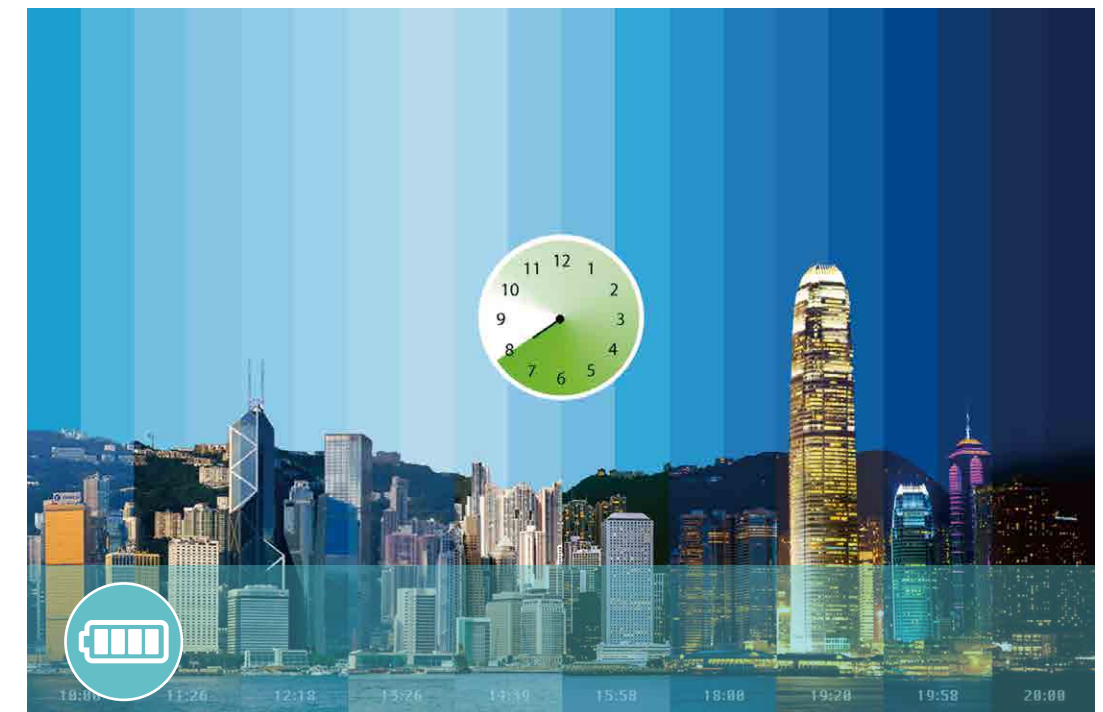
## Lightning 4G LTE

- Lightning generation 4G LTE – Supports 4G LTE network, compatible with 3G/2G network
- The Faster Connections – reaches up to 150Mbps download speed and 50Mbps upload one, to enjoy HD movies without interruption, download files in seconds, and hold a video chat without dropouts



## Dual Band Wi-Fi

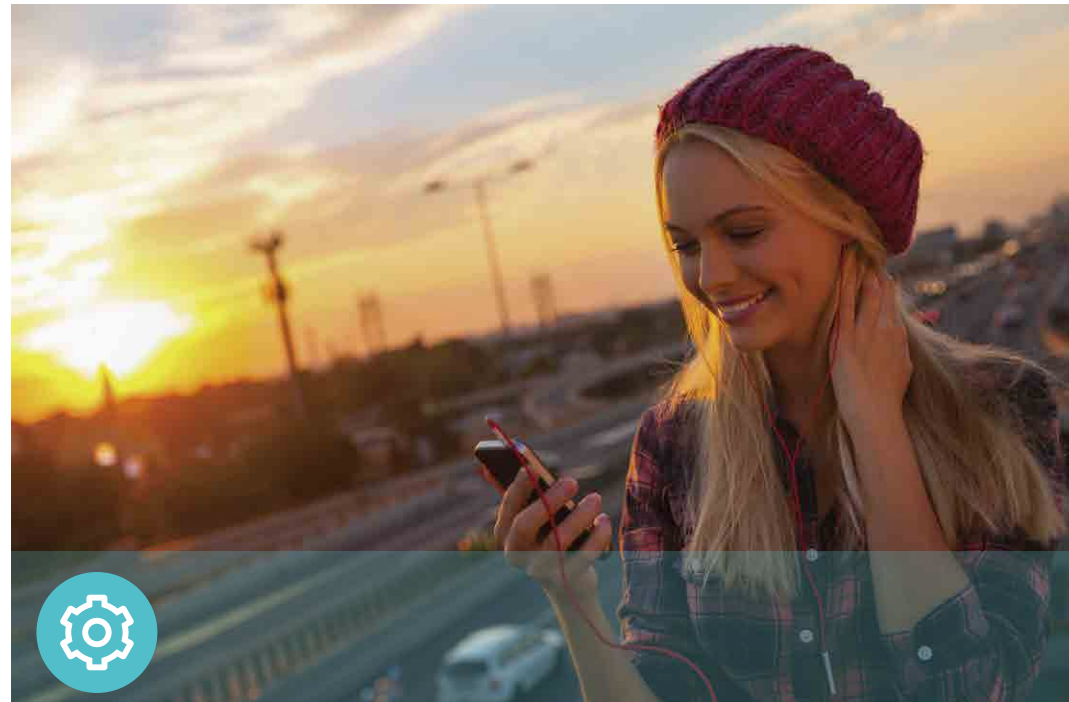
- Dual Band Wi-Fi– Selectable 2.4GHz or 5GHz dual band Wi-Fi, achieves better network connectivity when you are in network interference
- High-Speed Hotspots– Shares 2.4GHz at speed at 150Mbps or 5GHz at speed of 433Mbps



## 8 Hours Usage

- 1800mAh – 1800mAh rechargeable battery capacity
  - 8 hours – 8 hours of 4G sharing
  - 400 hours – 400 hours of standby
- \* Actual battery time may vary due to different using environments

# Features



## Easy Using

- One-Key Setup – To create a hotspot, just insert a SIM card and press the power button.
- 10 devices – Supports up to 10 devices simultaneously to share 4G/3G/2G network
- Compact design – Suitable for travel, business trips, outdoor activities or wherever you may be



## Storage Wireless Sharing

- Storage Sharing – Easily share photos, music, videos and more wirelessly across your network
- Up to 32GB – Equipped with a micro SD card slot for up to 32GB of optional storage

# Specifications

## Hardware

- Interface : 1 micro USB port for power supply, 1 SIM card slot, 1 Micro SD card slot
- Button: Power On/Off Button, Menu Button, Reset Button
- Screen Display: Traffic statistics, Wi-Fi status, user numbers, network type (2G/3G/4G), signal strength, Internet connection status, messages, battery life, Wi-Fi name, Wi-Fi password.
- External Power Supply: 5V/1A
- Dimensions (W x D x H): 98.5\*60.5\*16mm
- Antenna: Internal Antennas

## Wireless

- Network Type:
  - 4G: FDD-LTE Cat4 (800/900/1800/2100/2600MHz)  
TD-LTE Cat4 9(B38/B40/B41)
  - 3G: DC-HSPA+/HSPA/UMTS (900/2100MHz)
  - 2G: EDGE/GPRS/GSM (850/900/1800/1900MHz)
- Wireless Standards: Wireless Standards: IEEE 802.11n/a/ac 5GHz, IEEE 802.11b/g/n 2.4GHz
- Frequency: 5GHz and 2.4GHz
- Signal Rate: Selectable dual band, 150Mbps at 2.4GHz or 433Mbps at 5GHz
- Transmit Power: <20dBm(2.4GHz & 5GHz)
- Reception Sensitivity: 5GHz: 11a 54Mbps: -75dBm;  
11n HT20 MCS7: -71.5dBm;  
11n HT40 MCS7: -69.5dBm;  
11ac VHT80 MCS9:-60dBm;  
2.4GHz: 11b 11Mbps: -87.5dBm;  
11g 54Mbps: -74dBm;  
11n HT20 MCS7: -70dBm;  
11n HT40 MCS7: -68dBm;
- Wireless Security: Support WPA-PSK/WPA2-PSK, Wireless MAC Filtering, Enable/Disable SSID Broadcast
- DHCP: Server, Client, DHCP Client List

# Specifications

## Others

- Certification: CE, RoHS
- System Requirements:  
Windows 10/8/7/vista/XP, Mac OS, Android, iOS, Windows Phone
- Environment  
Operating Temperature: 0°C~35°C (32°F ~95°F)  
Storage Temperature: -20°C~60°C (4°F ~140°F)  
Operating Humidity: 10%~90% non-condensing  
Storage Humidity: 5%~90% non-condensing
- Package Contents  
4G LTE Mobile Wi-Fi M7310  
Micro USB Cable  
Nano to Micro SIM Card Adapter  
Quick Installation Guide  
1800mAh Battery



For more information, please visit  
<http://www.tp-link.com/en/products/details/M7310.html>