



HD Day/Night Cloud Camera, 300Mbps Wi-Fi NC250

Highlights

- **Stay Connected and Secure** – The cloud camera helps you keep in touch with what matters most to you, giving peace-of-mind in both home and office.
- **720p HD Image** – HD resolution gives a sharper, clearer and crisper imaging experience.
- **IR LEDs for Night Vision** – Automatic night vision functionality provides 24-hour surveillance support.
- **H.264 Video Compression** – Ensure smooth HD video streaming while consuming less bandwidth.
- **Anywhere and Anytime** – With tpCamera app and tplinkcloud.com web portal, it is easy to access your camera from anywhere, anytime.

Description

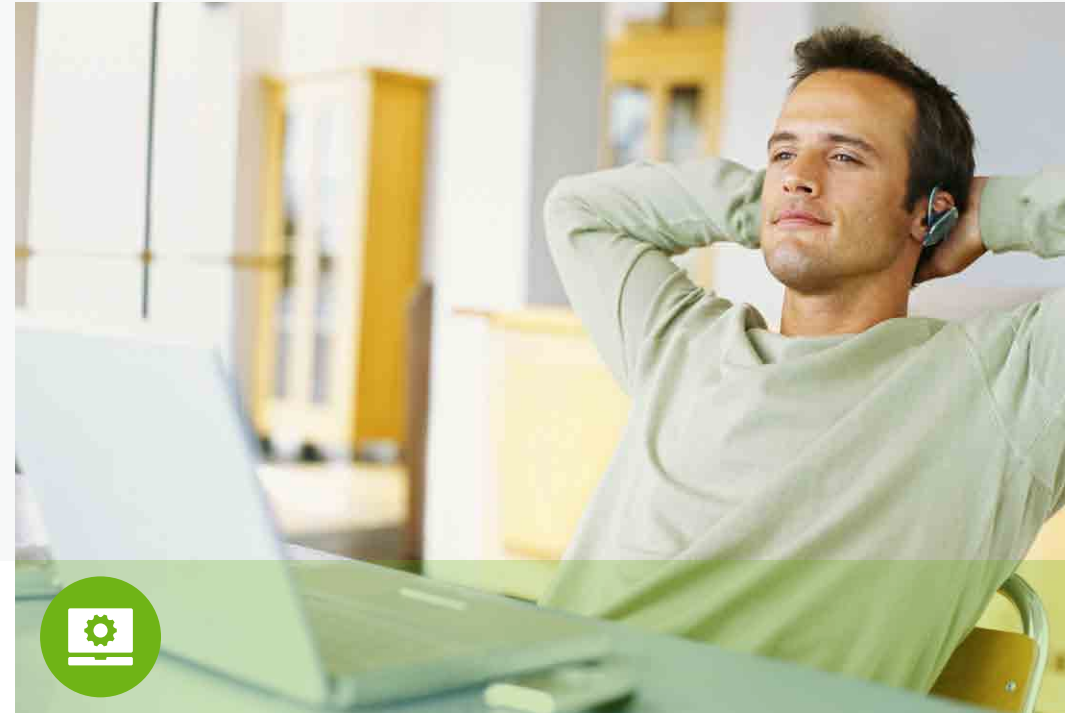
TP-LINK's HD Day/Night Cloud Camera NC250 is your perfect home and office companion, to help you keep in touch with what matters most, providing you with that sense of well-being while you are at work or play.

Features



Better View

- **720p HD Image** – HD resolution gives a sharper, clearer and crisper imaging experience.
- **IR LEDs for Night Vision** – Automatic night vision functionality provides 24-hour surveillance support.
- **H.264 Video Compression** – Ensure smooth HD video streaming while consuming less bandwidth.
- **Get 10x Closer** – 10x digital zoom for that 'close-up' experience.



Uses

- **Secures Your Lifestyle** – The cloud camera helps you keep in touch with what matters most, giving peace-of-mind in both home and office.
- **Live Video** – Check up on what's happening from anywhere using your desktops, iPhone, iPad or Android devices.
- **Multi-user** – Supports multi-user access for simultaneous viewing.



Ease of Use

- **WPS Support** – Connect to your wireless network easily via the WPS functionality on both the camera and compatible wireless routers.
- **Anywhere and Anytime** – With tpCamera app and tplinkcloud.com web portal, it is easy to access your camera from anywhere, anytime.

Features



Security

- **Motion & Sound Detection** – When motion or sound is detected, the camera will take a snapshot and notify you through email.



Wi-Fi Extension

- **Expanded 300Mbps Wi-Fi** – Eliminates dead zones by 'extending' the range of your wireless network.

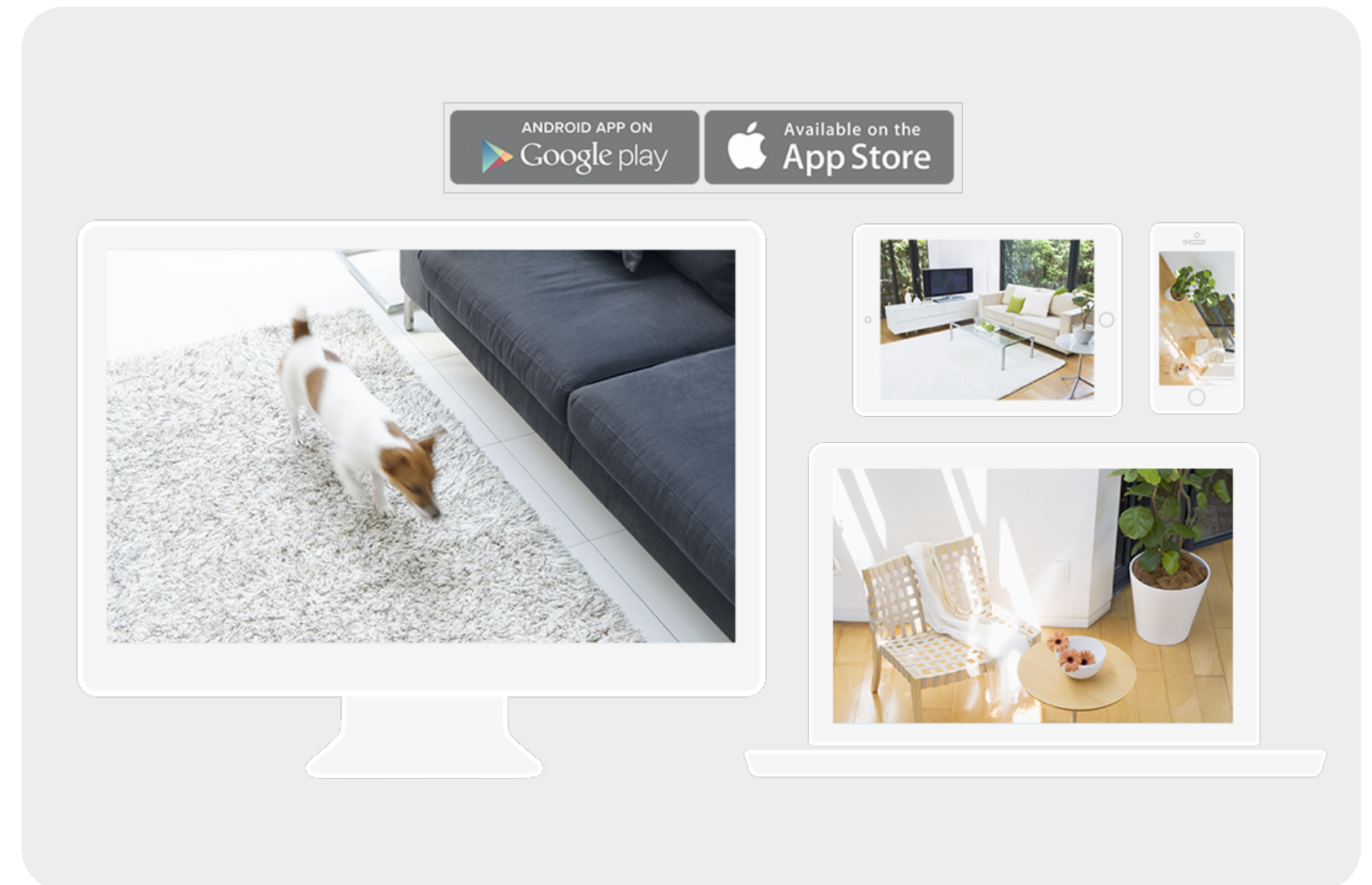
Stay Connected and Secure

TP-LINK's NC250 is your perfect home and office companion, to help you keep in touch with what matters most, providing you with that sense of well-being while you are at work or play.



Anywhere, Anytime Access

With the tpCamera app and tplinkcloud.com web portal, you can record videos, take pictures or just check up on what's happening wherever there is internet. Whether you are at the office or at play, you'll never miss those special moments.



Specifications

Camera

- **Image sensor:** 1/4" Progressive scan CMOS sensor
- **Resolution:** 1.0 Megapixel (1280 x 720)
- **Lens:** F: 2.8, f: 3.85 mm
- **Digital Zoom:** 10x Digital
- **Viewing Angle:** FOV = 64°
- **Minimum Illumination:** 0.5 Lux (0 Lux when IR on)

Audio

- **Audio Communication:** 1-Way
- **Audio Input:** Built-in microphone
- **Audio Compression:** AAC

Interface

- **Network Interface:** RJ-45 for Ethernet 10/100 Base-T
- **Power Connector:** DC power jack
- **Buttons:** Reset/WPS button

Video

- **Video Compression:** H.264
- **Video Streaming:** Controllable Frame rate up to 30fps
- **Image Settings:** Rotation: Mirror, Flip
Configurable brightness, contrast, saturation
Overlay capabilities: time, date, text

Alarm and Event Management

- **Input trigger:** Motion/Sound Detection
- **Settings :** Configurable hot zone,Adjustable sensitivity
- **Output notification:** E-mail

Specifications

Network

- **Protocol:** Bonjour, TCP/IP, DHCP, PPPoE, ARP, ICMP, FTP, SMTP, NFS, DNS, NTP, UPnP, HTTP, HTTPS, TCP, UDP, ONVIF and RTSP
- **Security:** Multiple password-protected user levels
- **Wireless Data Rates:** IEEE 802.11 b/g/n mixed, Up to 300Mbps
- **Frequency:** 2.4-2.4835GHz
- **Wireless Transmit Power:** <20dBm (EIRP)
- **Wireless Encryption:** WEP, WPA-PSK/WPA2-PSK encryption
- **System Requirements:** Windows 10/8/7/Vista/XP, Mac OS 10.7 or higher
Chrome 5.0, Mozilla Firefox 4.0, Opera 12, Safari 4.0, IE 7.0 or higher

General

- **Package Contents:** NC250, Power Adapter, Extension Cable, RJ-45 Ethernet Cable, Quick Installation Guide
- **External Power Supply :** 9V DC, Max 5.4W
- **Certifications:** RoHS, FCC, CE
- **Operating Temperature:** 0 °C~ 40 °C (32°F ~ 104°F)
- **Operating Humidity:** 10%~90%RH, Non-condensing
- **Dimensions (H x W x D):** 5.4 x 3.0 x 2.7 in. (137 x 76 x 69 mm)

Others

Similar Products



- HD Pan/Tilt Wi-Fi Camera WITH NIGHT VISION NC450



- HD Day/Night Wi-Fi Camera NC260



For more information, please visit

<http://www.tp-link.com/en/products/details/?model=NC250>

or scan the QR code left

Specifications are subject to change without notice. TP-LINK is a registered trademark of TP-LINK Technologies CO., Ltd. Other brands and product names are trademarks or registered trademarks of their respective holders. No part of the specifications may be reproduced in any form or by any means or used to make any derivative such as translation, transformation, or adaptation without permission from TP-LINK Technologies CO., Ltd.

www.tp-link.com