



# Installation Guide

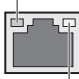

5/8-Port Gigabit Easy Smart Switch

TL-SG105E/TL-SG108E

## Power

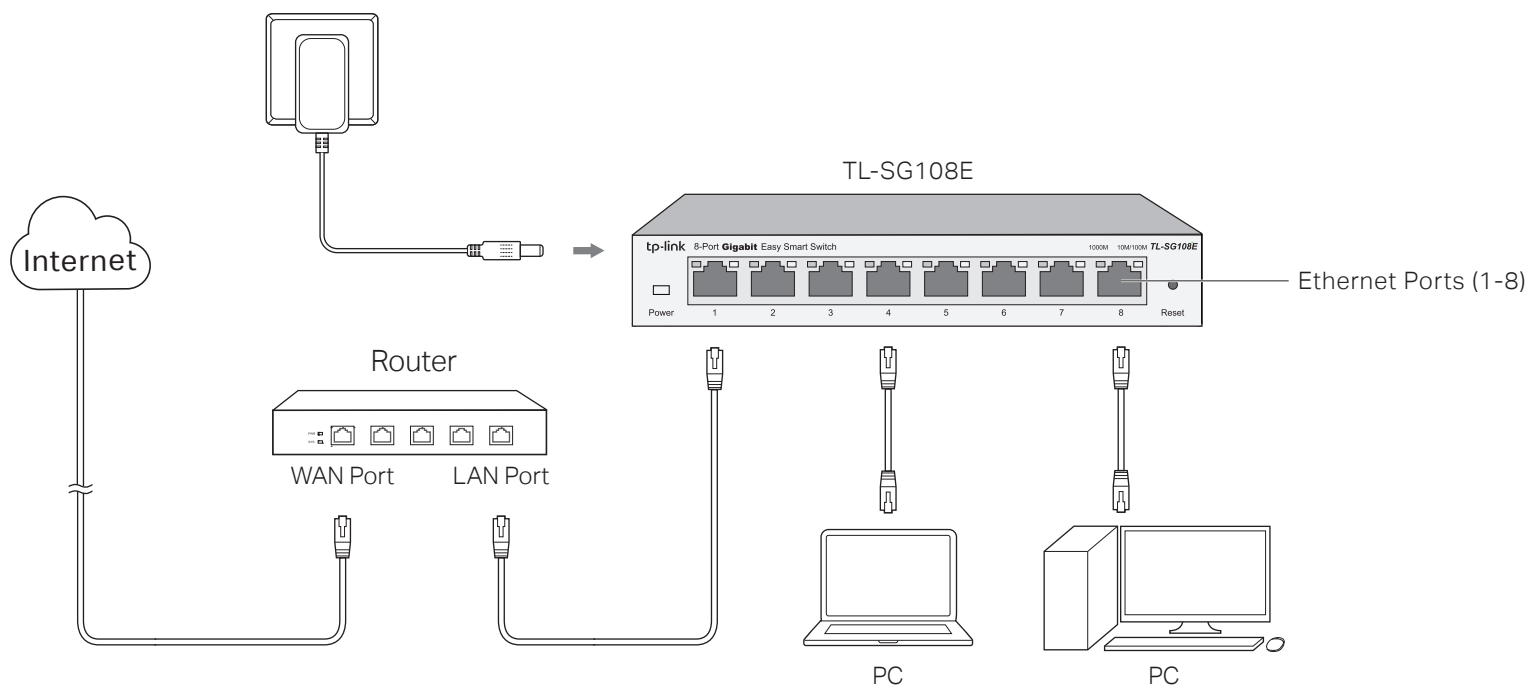
 On: Power on  
 Off: Power off

## Link/Act

 1000M (Green)  
 On: Running at 1000Mbps  
 Flashing: Transmitting/receiving data  
 10/100M (Yellow)  
 On: Running at 10/100Mbps  
 Flashing: Transmitting/receiving data

**Note:** For simplicity, we will take TL-SG108E for example throughout this Guide.

## Connection



## Configuration

The switch is plug and play. To manage the switch, you can use the Web-based GUI or the configuration utility. The utility is provided on the resource CD and only supported on Windows now.

### Using the Web-based GUI

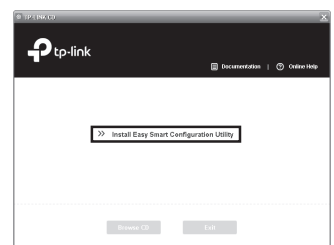
1. Prepare your computer with a static IP address 192.168.0.x ("x" ranges from 2 to 254), and a subnet mask 255.255.255.0.
2. Visit the Web-based GUI with the default IP address of the switch <http://192.168.0.1>, and log in with **admin** as both user name and password. Then configure the switch on the GUI.




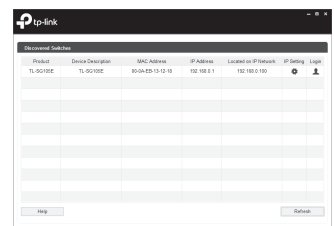
### Using the configuration utility


1. Insert the resource CD into a computer connected to the switch.

2. The resource CD home screen will appear. If not, double click **AutoRun.exe** on the resource CD. Then click **Install Easy Smart Configuration Utility** on the home screen and follow the prompts to install the program.



3. Double click the icon  on the desktop, and the utility home page displays a list of TP-LINK Easy Smart Switches on the local network.



4. Make sure the switch that you want to manage is in the same subnet as your computer. You can click  to configure the switch IP address.
5. Double click the switch that you want to configure. Next enter the username and password (both **admin**) for it. Then use the utility to configure the switch.

For more details, see the **User Guide** and the **Easy Smart Configuration Utility User Guide** on the resource CD.

# Specifications

## General Specifications

|                       |  |
|-----------------------|--|
| Standard              | IEEE802.3i, IEEE802.3u, IEEE802.3ab, IEEE802.3x, IEEE802.1p, IEEE802.1q  |
| Protocol              | CSMA/CD  |
| Data Transfer Rate    | Ethernet: 10Mbps (Half Duplex), 20Mbps (Full Duplex)<br>Fast Ethernet: 100Mbps (Half Duplex), 200Mbps (Full Duplex)<br>Gigabit Ethernet: 2000Mbps (Full Duplex)  |
| Network Media (Cable) | 10Base-T:<br>UTP category 3, 4, 5 cable (maximum 100m)<br>EIA/TIA-568 100Ω STP (maximum 100m)<br>100Base-TX:<br>UTP category 5, 5e cable (maximum 100m)<br>EIA/TIA-568 100Ω STP (maximum 100m)<br>1000Base-T:<br>UTP category 5e cable (maximum 100m)<br>EIA/TIA-568 100Ω STP (maximum 100m) |
| Interface             | 5/8 10/100/1000Mbps Auto-Negotiation RJ45 Ports  |
| LED indicators        | Power, 10/100M LED, 1000M LED  |
| Transfer Method       | Store-and-Forward  |
| MAC Address Learning  | Automatically learning, automatically aging  |
| Frame Filter Rate     | 10Base-T: 14881pps/Port<br>100Base-Tx: 148810pps/Port<br>1000Base-T: 1488095pps/Port   |
| Frame Forward Rate    | 10Base-T: 14881pps/Port<br>100Base-Tx: 148810pps/Port<br>1000Base-T: 1488095pps/Port   |

## Environmental and Physical Specifications

|                       |                              |
|-----------------------|------------------------------|
| Operating Temperature | 0 °C~40 °C (32 °F~104 °F)    |
| Storage Temperature   | -40 °C~70 °C (-40 °F~158 °F) |
| Operating Humidity    | 10%RH~90%RH non-condensing   |
| Storage Humidity      | 5%RH~95%RH non-condensing    |

## FCC STATEMENT

This equipment has been tested and found to comply with the limits for a Class B digital device, pursuant to part 15 of the FCC Rules. These limits are designed to provide reasonable protection against harmful interference in a residential installation. This equipment generates, uses and can radiate radio frequency energy and, if not installed and used in accordance with the instructions, may cause harmful interference to radio communications. However, there is no guarantee that interference will not occur in a particular installation. If this equipment does cause harmful interference to radio or television reception, which can be determined by turning the equipment off and on, the user is encouraged to try to correct the interference by one or more of the following measures:

- Reorient or relocate the receiving antenna.
- Increase the separation between the equipment and receiver.
- Connect the equipment into an outlet on a circuit different from that to which the receiver is connected.
- Consult the dealer or an experienced radio/ TV technician for help.

This device complies with part 15 of the FCC Rules. Operation is subject to the following two conditions:

- 1) This device may not cause harmful interference.
- 2) This device must accept any interference received, including interference that may cause undesired operation.

Any changes or modifications not expressly approved by the party responsible for compliance could void the user's authority to operate the equipment.

# Frequently Asked Questions (FAQ)

## Q1. The Power LED is not lit

The Power LED should be lit when the power system is working normally. If the Power LED is not lit, please check as follows:

**A1:** Make sure the power adapter is connected to the switch with power source properly.

**A2:** Make sure the voltage of the power supply meets the requirements of the input voltage of the switch.

**A3:** Make sure the power source is ON.

## Q2. The Link/Act LED is not lit when a device is connected to the corresponding port

It is recommended that you check the following items:

**A1:** Make sure that the cable connectors are firmly plugged into the switch and the device.

**A2:** Make sure the connected device is turned on and works normally.

**A3:** The cable must be less than 100 meters long (328 feet).



For more information, please visit our website:  
<http://www.tp-link.com>

## SAFETY NOTICES

⚠ Cautions

Do not use this product near water, for example, in a wet basement or near a swimming pool.

Avoid using this product during an electrical storm. There may be a remote risk of electric shock from lightning.

## CE Mark Warning

This is a class B product. In a domestic environment, this product may cause radio interference, in which case the user may be required to take adequate measures.



Продукт сертифіковано згідно з правилами системи УкрСЕПРО на відповідність вимогам нормативних документів та вимогам, що передбачені чинними законодавчими актами України.

