

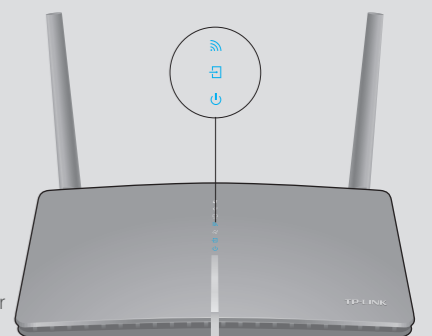
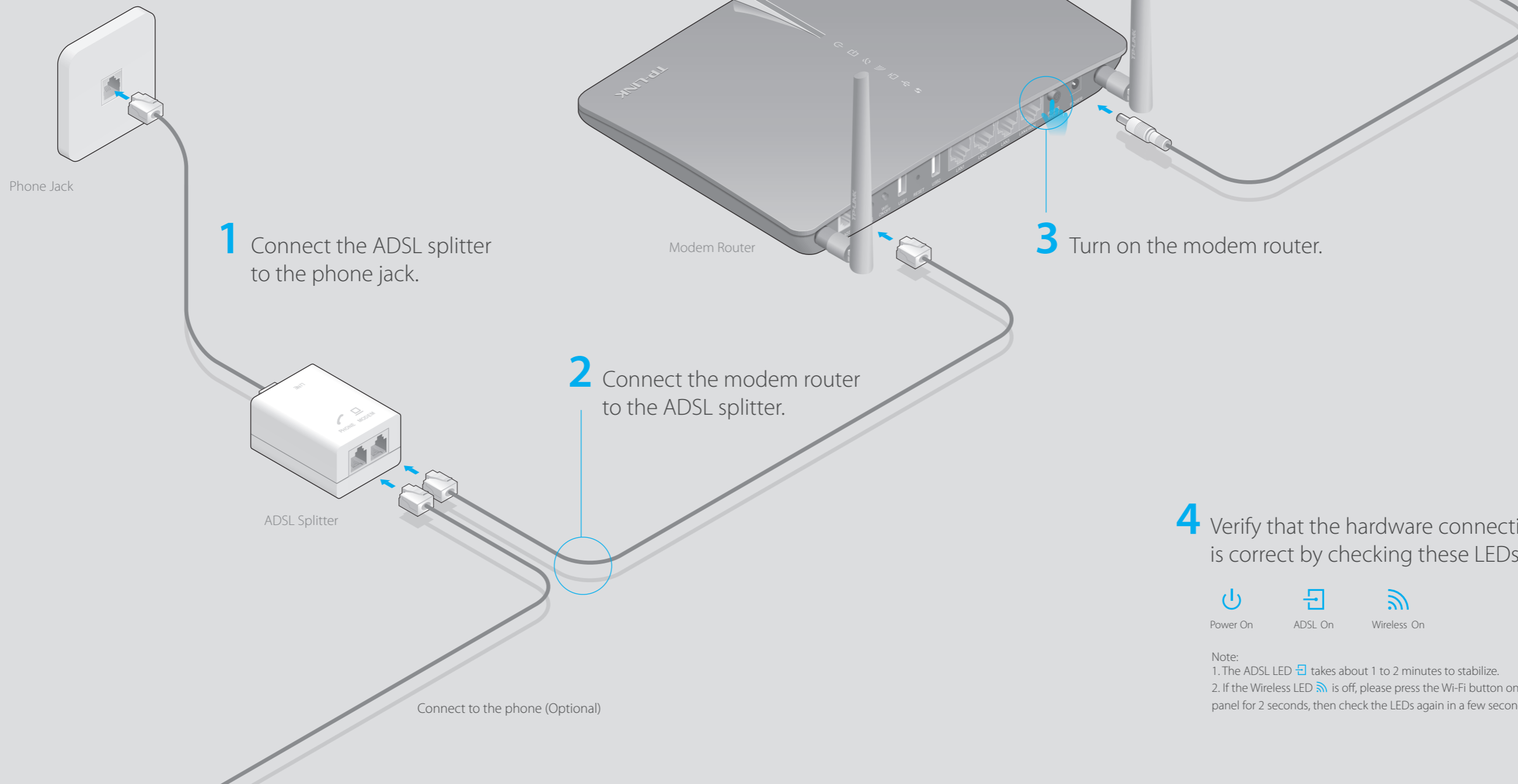
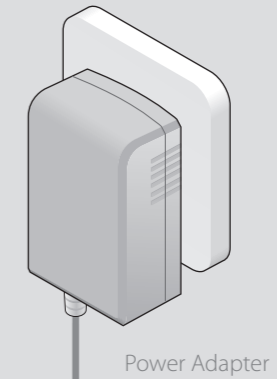
# Quick Installation Guide

AC1200 Wireless Dual Band Gigabit ADSL2+  
Modem Router

*Archer D5*

## Connecting the Hardware

If you don't need the phone service, just directly connect the modem router to the phone jack with a phone cable, then follow steps 3 and 4 to complete the hardware connection.

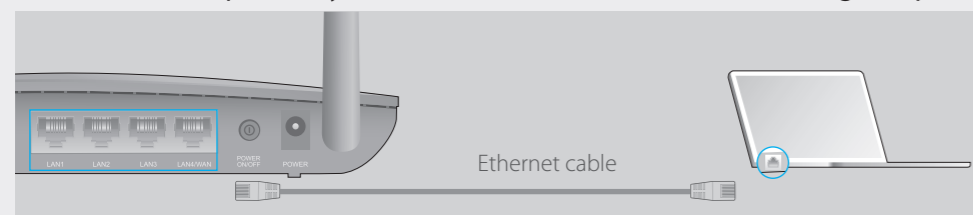


# Configuring the Modem Router

## 1. Connecting your computer to the modem router (Wired or Wireless)

### Wired

Connect the computer to your modem router and the LAN LED lights up.

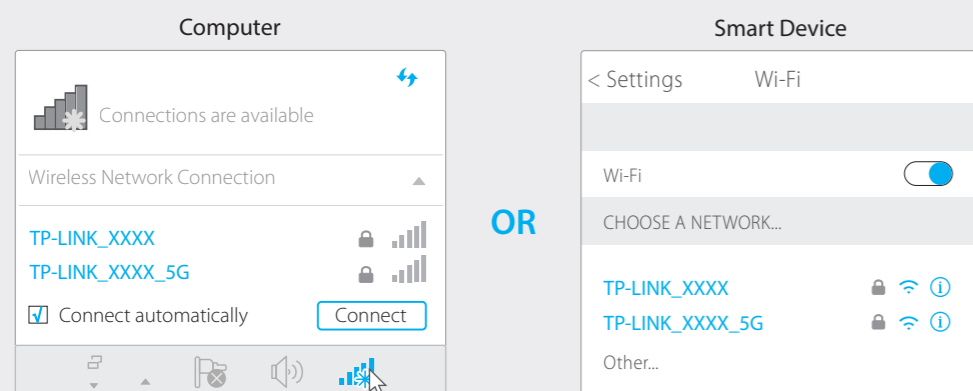


### Wireless

a. Find the SSID (network name) and Wireless Password printed on the product label at the bottom of the modem router.



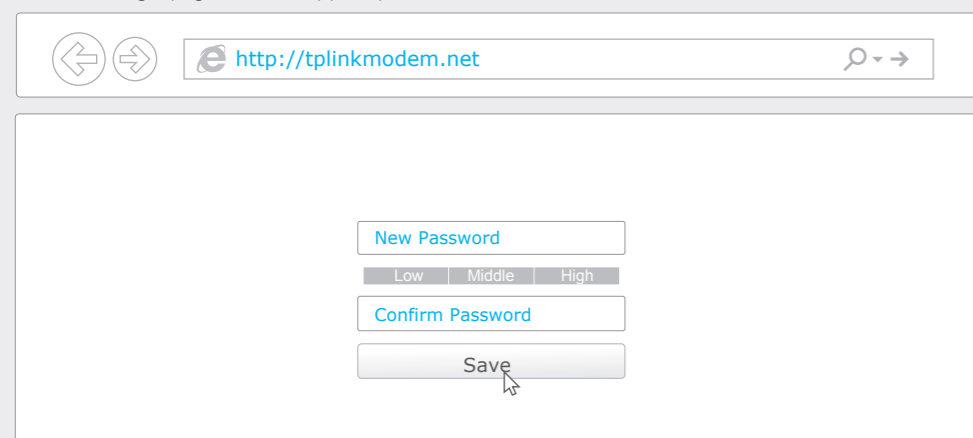
b. Click the network icon of your computer or go to Wi-Fi Setting of your smart device, then select the SSID to join the network.



## 2. Configuring the modem router via a web browser

**A** Launch a web browser and type in <http://tplinkmodem.net> or **192.168.1.1**. Create a new password (1-15 characters) and click **Save**.

Note: If the login page does not appear, please refer to FAQ > Q1.



**B** Enter the new password that you created and click **Log in**.

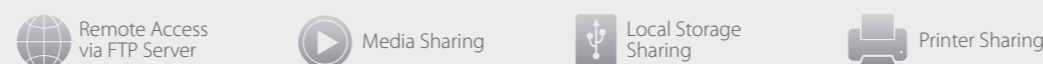
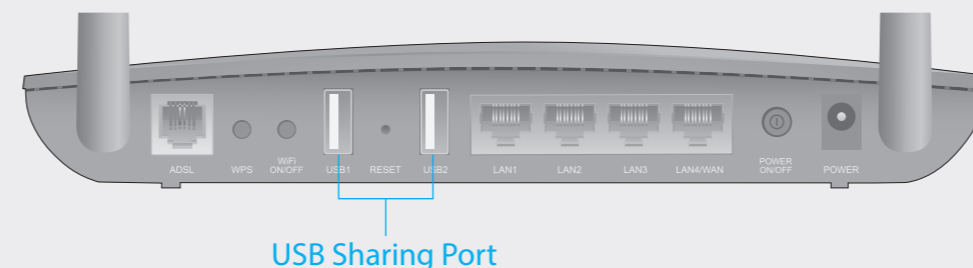
Note: For subsequent logins, use your password you have created.

**C** Follow the step-by-step instructions of the Quick Setup to complete the initial configuration.

Note: For advanced settings, please refer to the User Guide on TP-LINK official website at [www.tplink.com](http://www.tplink.com).

# USB Features

Use the USB port for media sharing, storage sharing and printer sharing across your local network. You can also setup an FTP server to access your files remotely through the Internet.



To learn more about the USB features, visit <http://tp-link.com/app/usb> or simply scan the QR code.



# Tether App

TP-LINK Tether app lets you conveniently access the modem router. You can view your network information, block network access, set up parental controls, configure your wireless settings and more.

Scan the QR code to download the TP-LINK Tether app from the Apple App Store or Google Play.



# LED Indicators

LED	Status	Indication
⏻ (Power)	On	System initialization complete.
	Flashing	System initializing or firmware upgrading is in process. Do not disconnect or power off the modem router.
📶 (ADSL)	On	ADSL synchronization established.
	Flashing	The ADSL negotiation is in progress.
🌐 (Internet)	On	Internet connection is available.
	Off	No Internet connection or the modem router is operating in Bridge mode.
📶 (Wireless)	On	The wireless 2.4GHz or 5GHz band is enabled.
	Off	The wireless function is disabled.
📶 (LAN)	On	At least one LAN port is connected.
	Off	No LAN port is connected.
📶 (USB)	On	The USB device is identified and ready to use.
	Flashing	The USB device is being identified.
	Off	No USB device is plugged into the USB port.
🔄 (WPS)	On	A WPS synchronization is established.
	Flashing	A wireless device is trying to connect to the network via WPS. This process may take up to 3 minutes.
	Off	A WPS synchronization has been established for more than 5 minutes or a WPS synchronization failed.

# FAQ (Frequently Asked Questions)

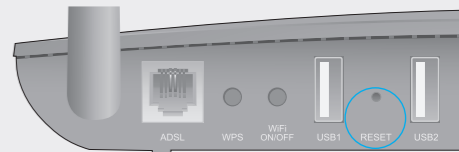
## Q1. What can I do if the login page does not appear?

- A1. Make sure the computer is connected to the modem router properly.
- A2. If the computer is set to a static or fixed IP address, change it to obtain an IP address automatically from the modem router.
- A3. Verify <http://tplinkmodem.net> is correctly entered in the web browser and press Enter.
- A4. Use another web browser and try again.
- A5. Reboot your modem router and try again.
- A6. Disable and enable the active network adapter.

## Q2. What can I do if I cannot access the Internet?

- A1. Make sure the telephone and Ethernet cables are plugged in correctly.
- A2. Try to log into the web management page of the modem router using the default address at <http://tplinkmodem.net>. If you can, try the following answers. If you cannot, change your computer to obtain an IP address automatically from the modem router.
- A3. Consult your ISP and make sure all the VPI/VCI, Connection Type, account username and password are correct. If they are not, please replace them with the correct settings and try again.
- A4. Restore the modem router to its factory default settings and reconfigure the modem router by following the instructions in this Quick Installation Guide.
- A5. Please contact our Technical Support if the problem still exists.

## Q3. How do I restore the modem router to its factory default settings?

- A1. With the modem router powered on, use a pin to press and hold the **RESET** button on the rear panel of the modem router for 8 seconds until all LEDs turn off momentarily, then release the button.
 

RESET Button Use a Pin to Press & Hold 8 seconds
- A2. Log into the web management page of the modem router, and go to **Advanced > System Tools > Backup & Restore**, click **Factory Restore** and wait until the reset process is complete.

## Q4. What can I do if I forget my password?

- **Web Management page password:**  
Restore the modem router to its factory default settings and then set a new password using 1-15 characters.
- **Wireless Network password:**  
A1. The default Wireless Password/PIN is printed on the product label of the modem router.  
A2. If the default wireless password has been changed, log into the modem router's web management page and go to **Basic > Wireless** to retrieve or reset your password.

## Q5. What can I do if the ADSL LED does not turn solid on?

- A1. Check your cables and make sure they are all plugged in correctly, including the telephone lines and power adapter.
- A2. Manually change your DSL settings. Log into the modem router's web management page. Go to **Advanced > Network > DSL Settings**, change the **DSL Modulation Type** to **G.dmt**, and click **Save**. You will be prompted a disconnection, and click **Yes** to continue. If this cannot work, try to change the **DSL Modulation Type** to **ADSL2**.
- A3. Restore your modem router to its factory default settings.
- A4. Remove the ADSL splitter, directly connect the modem router to the phone jack and then reconfigure the modem router by following the instructions in this Quick Installation Guide.
- A5. Contact your ISP to verify if the ADSL line is in good status.
- A6. If you have tried all the suggestions above and the problem still exists, contact our Technical Support.