

Print Server Application Guide

Contents

Overview	1
Installation for Windows OS	2
Application for Windows OS	6
How to launch/exit the TP-LINK USB Printer Controller	6
How to Print.....	6
How to scan.....	9
Other functions/ settings.....	15
Installation for Mac OS.....	17
Application for Mac OS.....	20
How to Launch/Exit the TP-LINK USB Printer Controller.....	20
How to Print.....	21
How to Scan	24
Other functions/ settings.....	30
Troubleshooting	32

Overview

Print server is a function embedded in your modem router. It allows you to share your printer with computers that are connected to the modem router.

Typical Topology

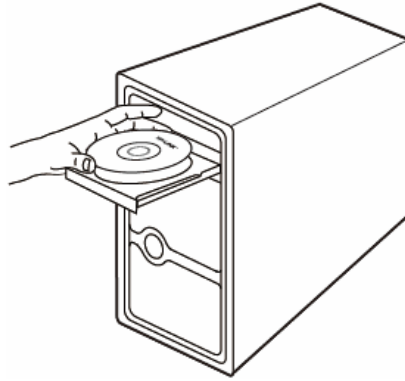


Note:

- (1) Before connection, please check the **Printer Compatibility List** to verify whether your printer is supported by the modem router. You can refer to **Troubleshooting** for downloading the Printer Compatibility List.
- (2) Make sure you have already installed the printer's driver on your computer. Otherwise, please install it first.
- (3) Any computer in your LAN must first install the software if it wants to share the print server via the modem router.
- (4) Here in this guide, we take the configuration procedures of TD-W8990 for example.

Installation for Windows OS

1. Insert the modem router's Resource CD into the CD-ROM drive.



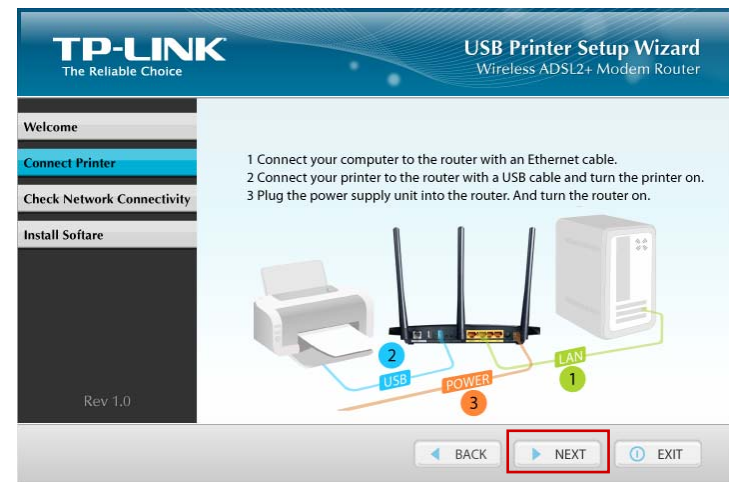
2. Select your modem router model and click **Printer Sharing Setup**.



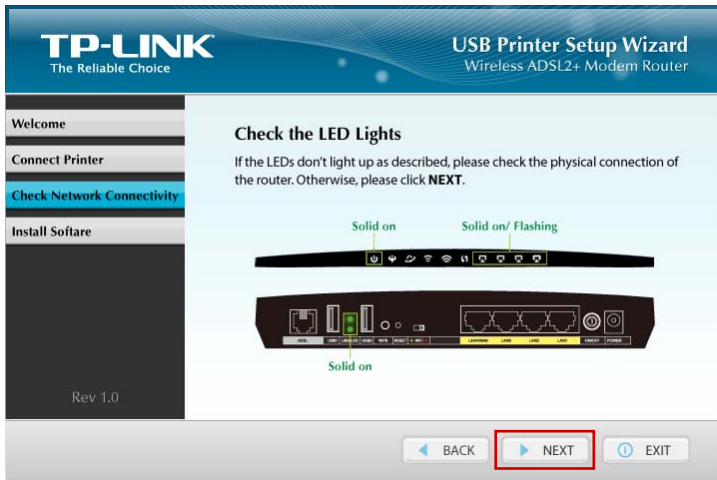
3. Click **START**.



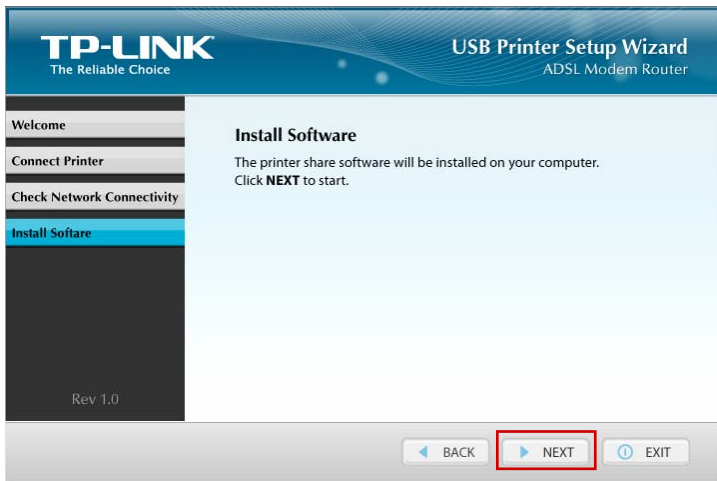
4. Connect your computer and printer to the modem router step by step as instructed. Click **NEXT**.



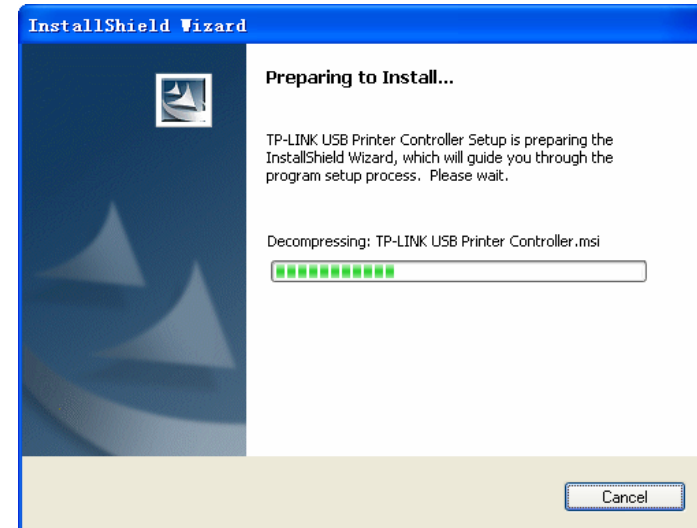
5. Check the LED lights and click **NEXT**.



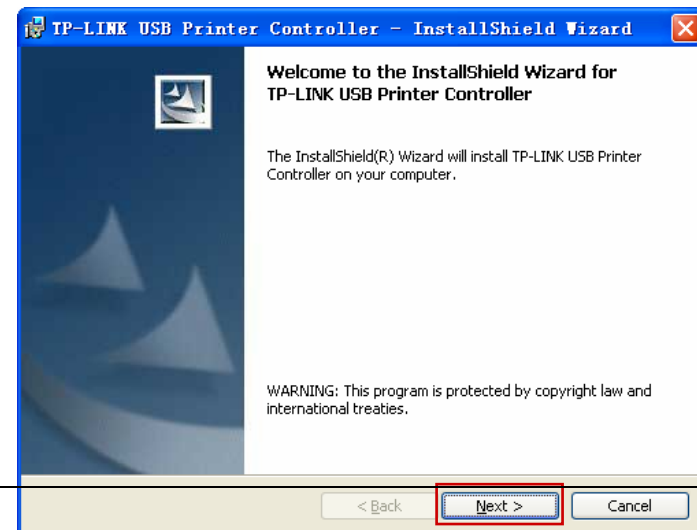
6. Click **NEXT** to start installing the printer share software.



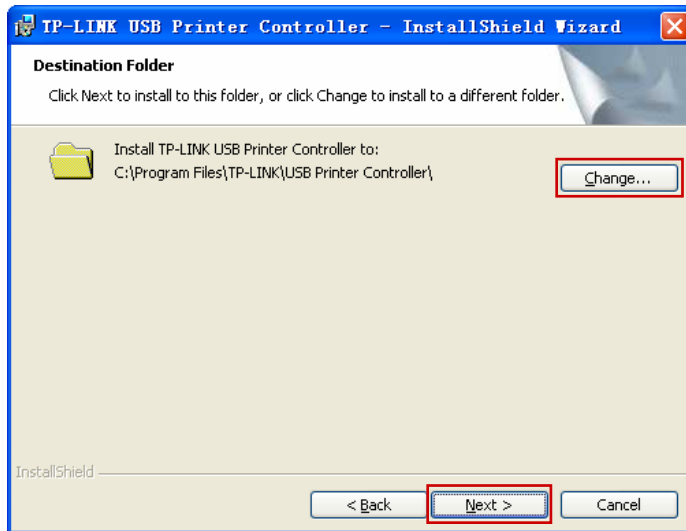
7. Please wait a moment for the installation preparation.



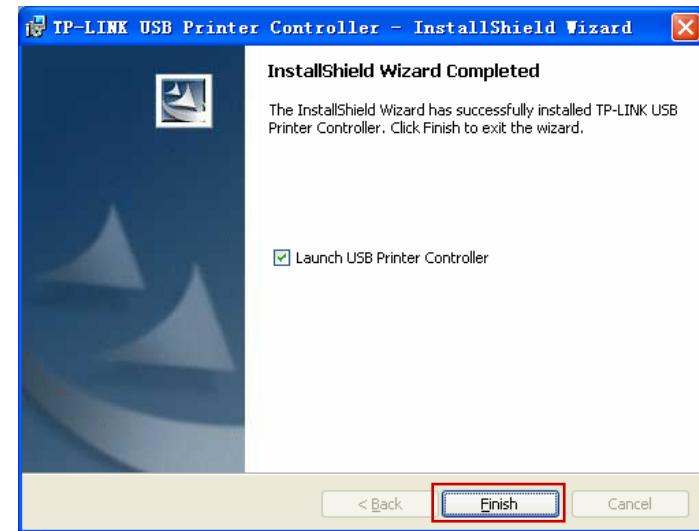
8. Click **Next** and go on to install the TP-LINK USB Printer Controller.



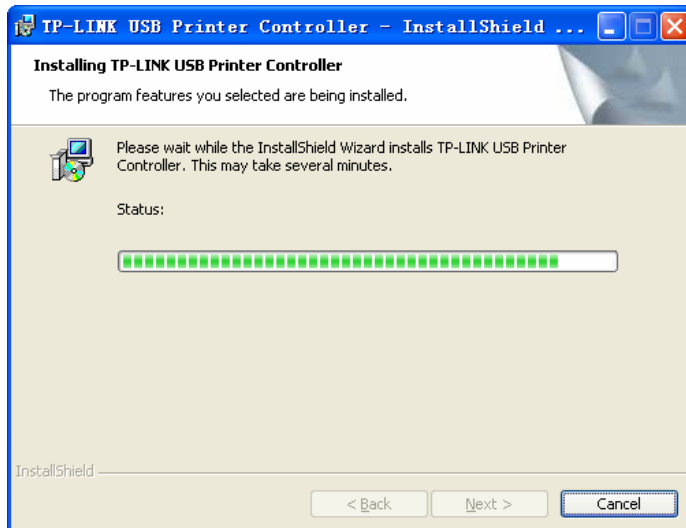
9. Click **Change...** to select another destination folder, or leave it default and click **Next**.



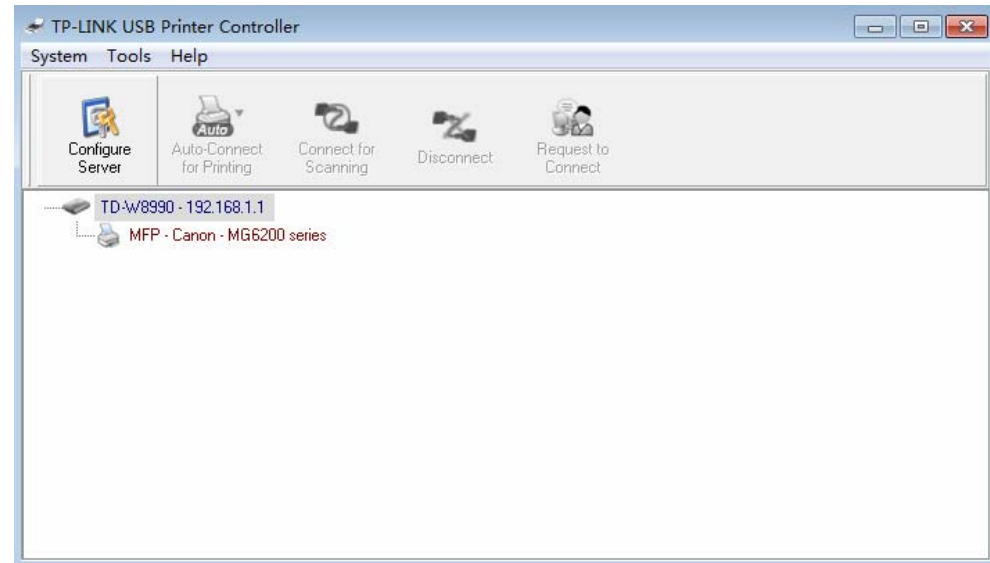
11. Click **Finish** to complete and exit the InstallShield Wizard.



10. Please wait a while for the installation process.




When the installation is completed, the TP-LINK USB Printer Controller will pop up, with whose help you can print documents via the modem router now.




Note:

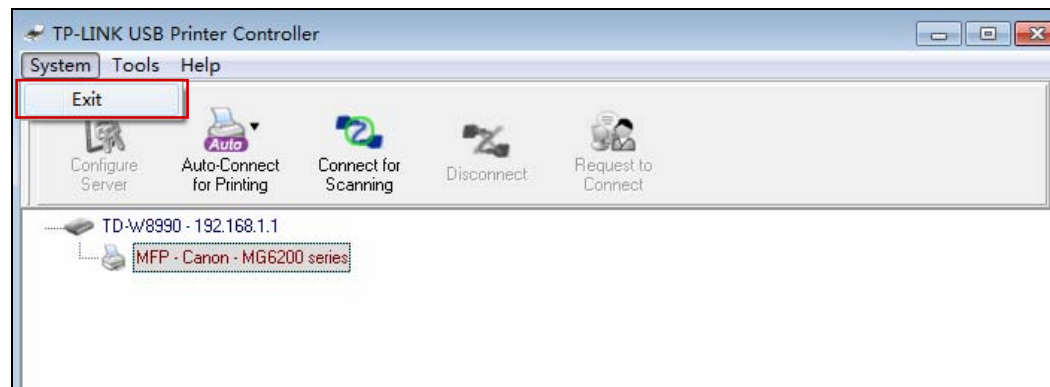
In your LAN, each computer that wants to share the print server should also install the **TP-LINK USB Printer Controller**. Please follow the previous steps to configure other computers in your LAN.

Application for Windows OS

TP-LINK USB Printer Controller is used to operate the USB Printer on your own computer. After successful installation, the icon  will appear on the desktop of your computer.

How to launch/exit the TP-LINK USB Printer Controller

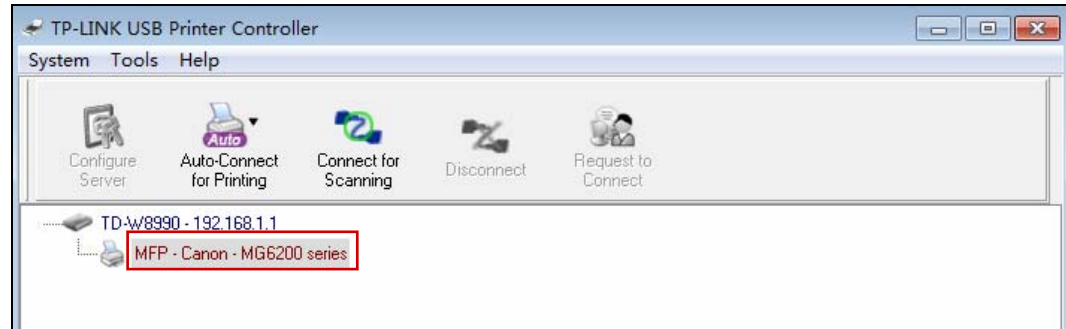
- To launch the USB Printer Controller, double-click the icon  on your desktop.
- To exit the USB Printer Controller, click **System->Exit** on the TP-Link USB Printer Controller.



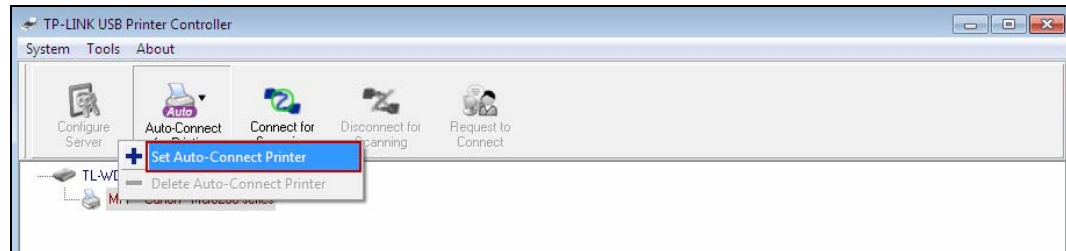
How to Print

To print, first of all, you need to set your **Auto-Connect Printer**. After successful setting, you can execute your printing tasks automatically. Please follow the steps below to set your auto-connect printer.

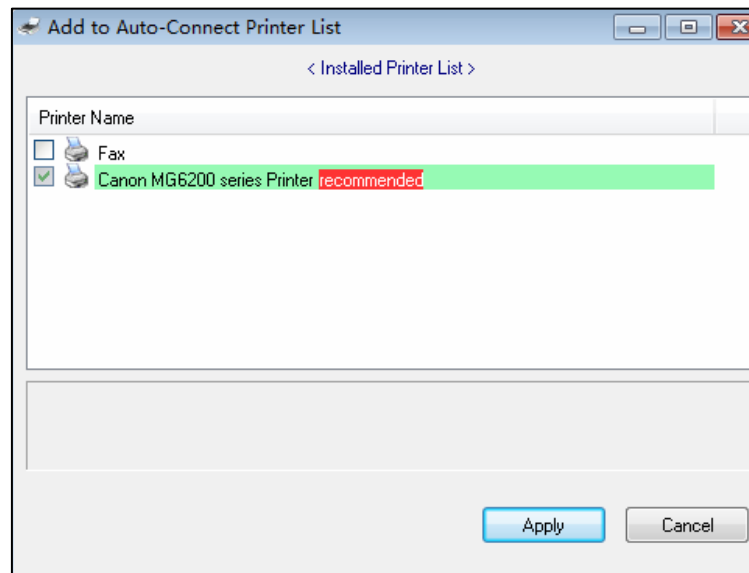
Step 1: Highlight the printer you want to set as auto-connect printer.



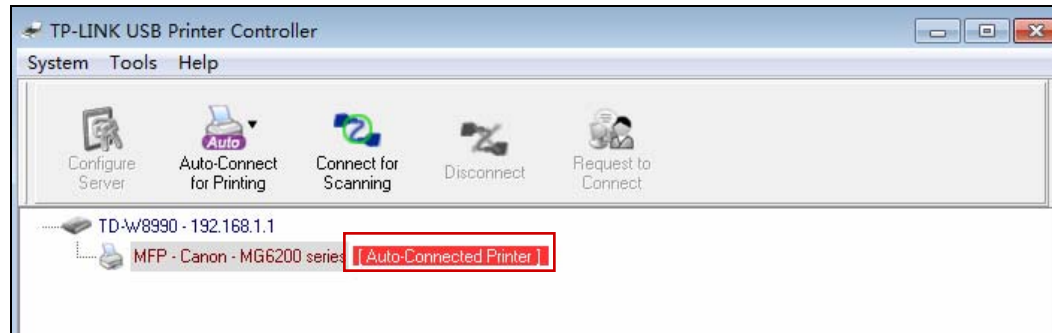
Step 2: Click the inverse triangle mark on the **Auto-Connect for printing** tab to pull down the list, where you can select **Set Auto-Connect Printer**.



Step 3: Tick the name of the printer you would like to set as auto-connect printer, and then click **Apply**.



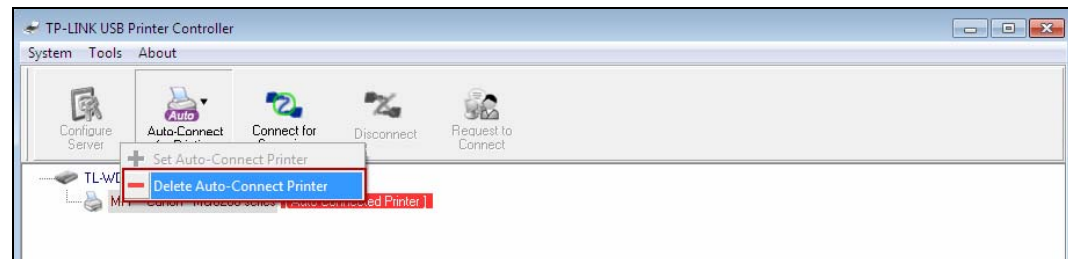
After successful setting, you will see the printer marked as **Auto-Connected Printer**. Then you can execute your printing task freely.



If you want to disable your printer's auto-connect function, you can delete it.

Method One:

Select **Delete Auto-Connect Printer** from the drop-down list of the **Auto-Connect for Printing** tab.

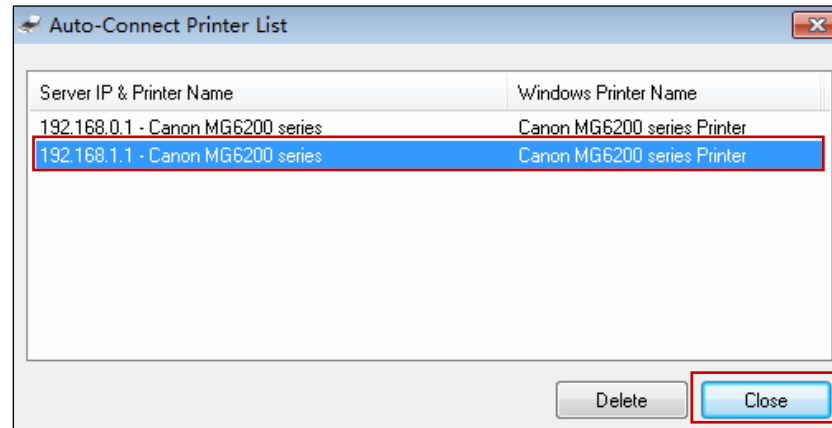


Method Two:

1. Go to **Tools->Auto-Connect Printer List**.



2. Highlight your auto-connect printer and then click **Delete**.

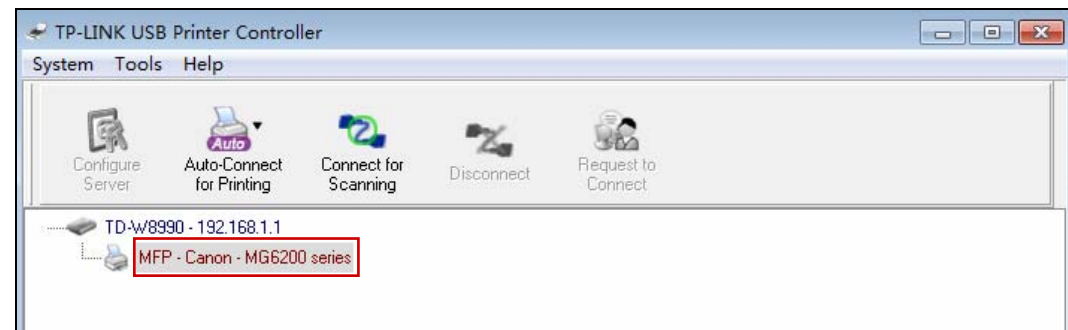


How to scan

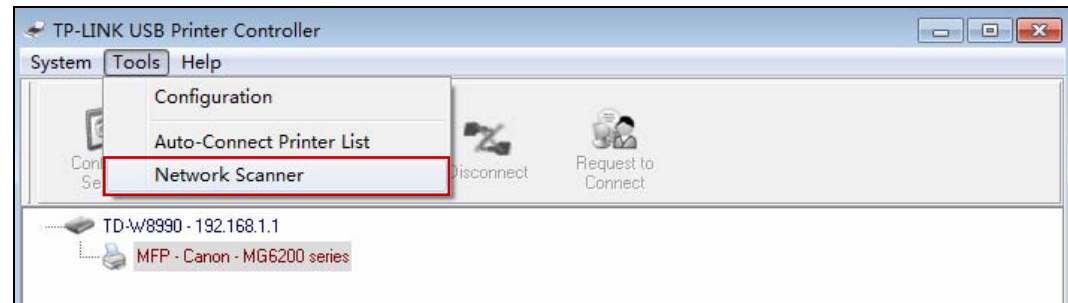
There are two methods available to realize the scanning function.

Method One: Network Scanner

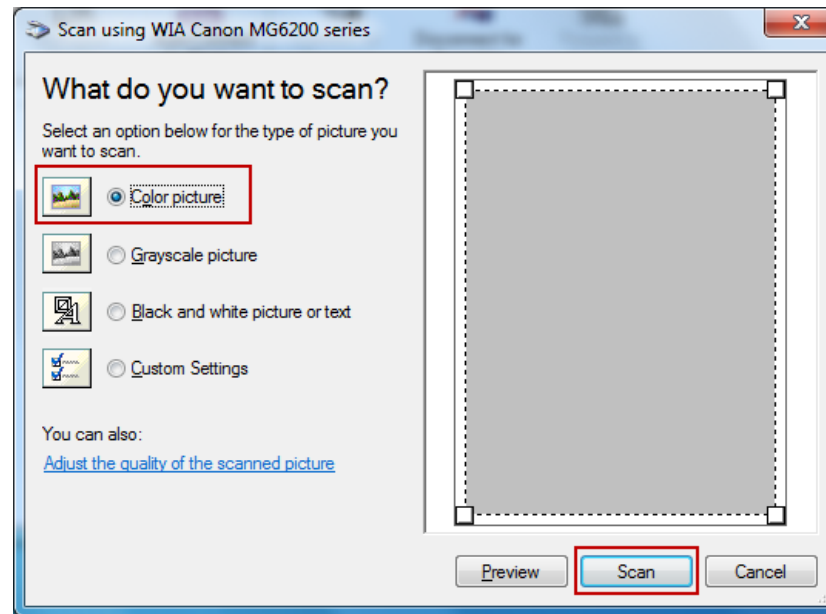
Step 1: Highlight your scanner or MFP.



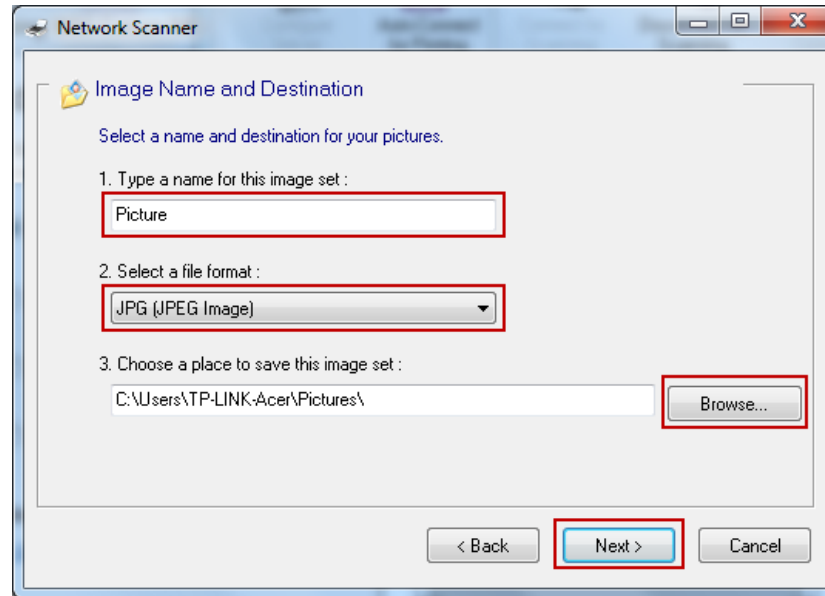
Step 2: Click *Tools* and then select *Network Scanner*.



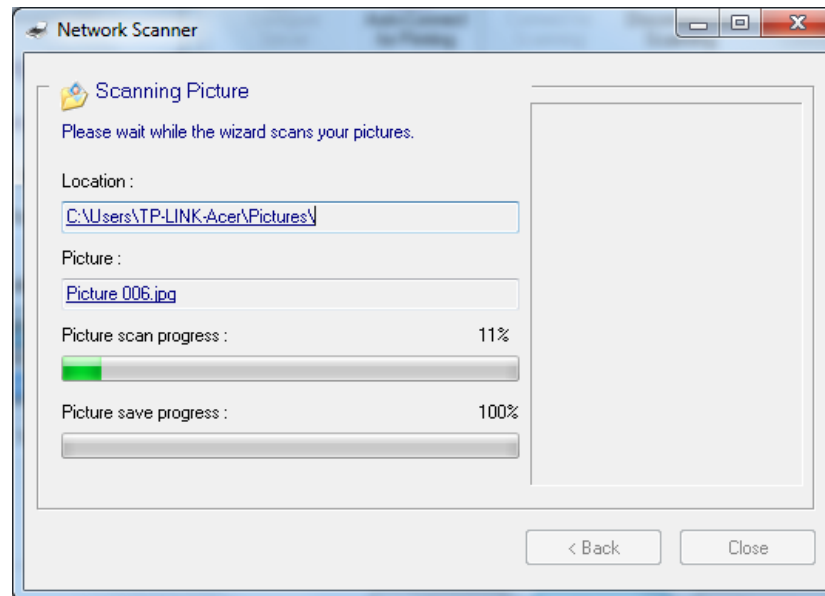
Step 3: Select the type of picture you want to scan, and then click *Scan*.



Step 4: Name the image set, select the file format, and choose the file destination by clicking **Browse...** or leave it default. Then click **Next**.

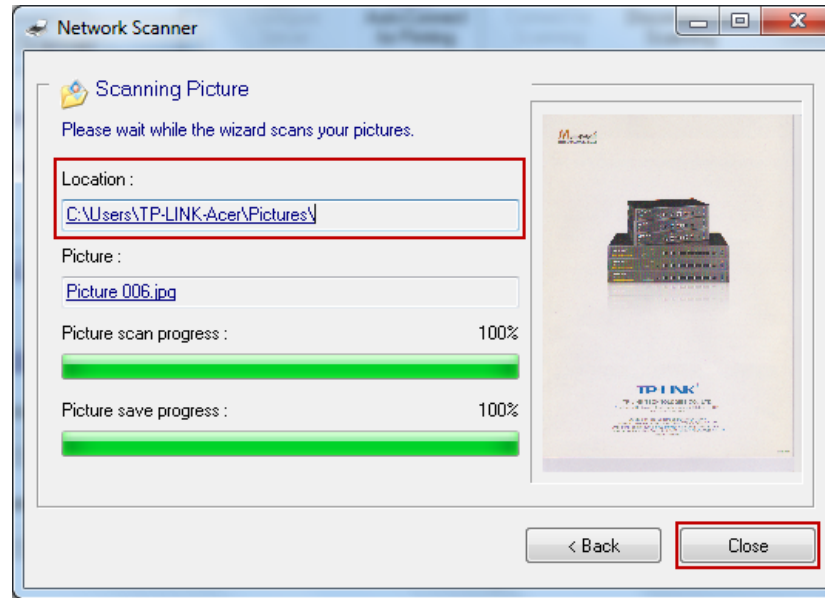


Step 5: Wait a while for the scan process.



Step 6: When it is 100% processed and saved, please click **Close** to complete it.

Then go to the location you've chosen in the previous **Step 4** and find your picture scanned.

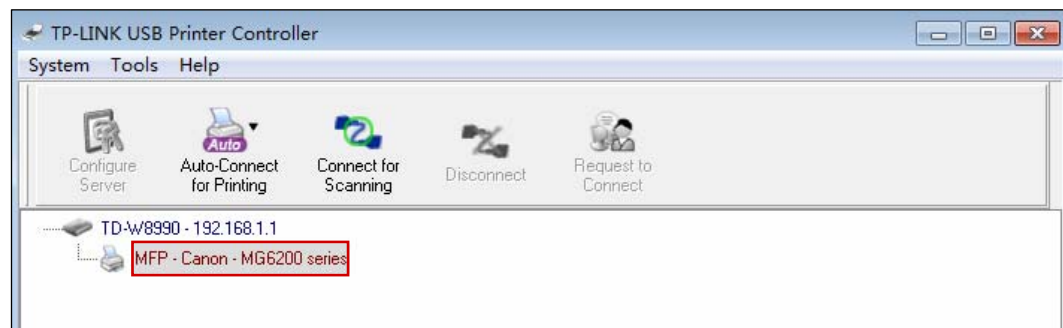


Method Two: Connect for Scanning

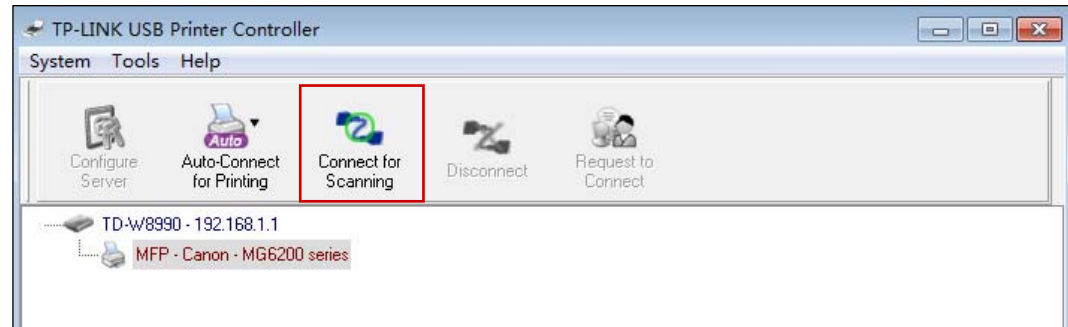
Note:

If you choose this method for scanning, no one else in your LAN can share the scanner or MFP to either print or scan, until you click the tab **Disconnect for Scanning** to release it or accept their **Request to Connect**.

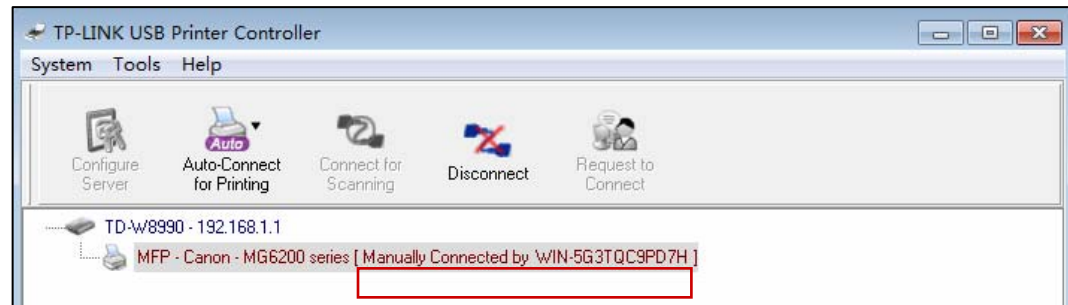
Step 1: Highlight your scanner or MFP.



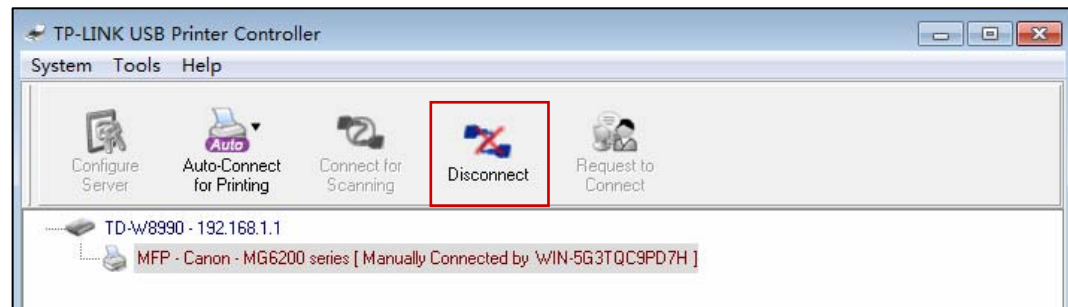
Step 2: Click the tab **Connect for Scanning**.



Successfully set and ready for scanning, it will display **Manually Connected by...**, when you can start your scanning task.



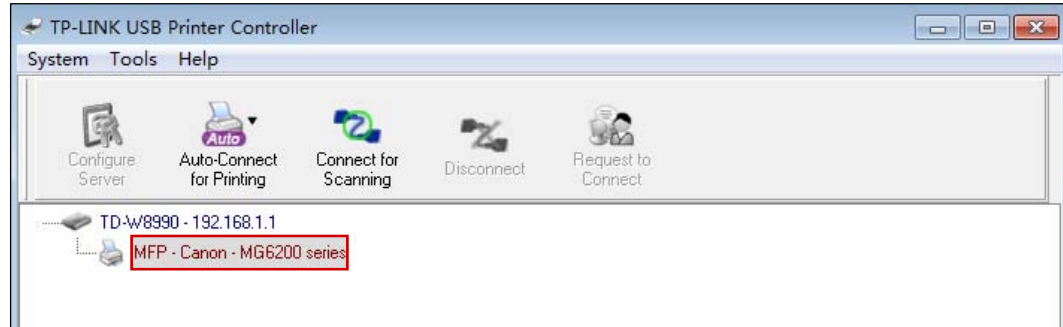
Step 3: After finishing your scanning task, please do remember to click the tab **Disconnect** to release the scanner or MFP.



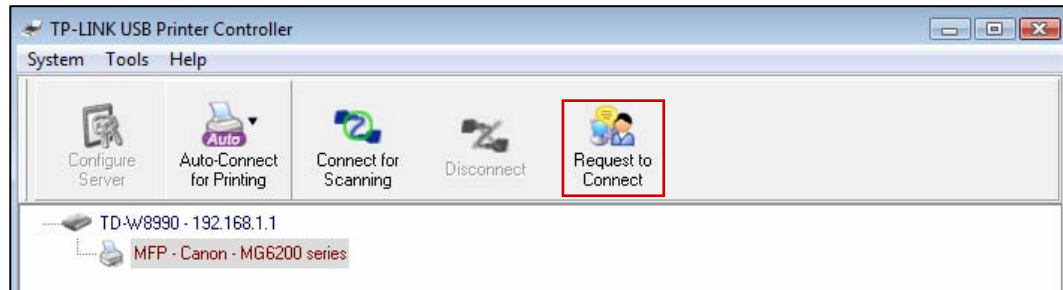
➤ **Request to Connect**

When one computer in your LAN **Connects for Scanning**, it is occupying the scanner or MFP; then if you would like to use the printer as well, you will have to **Request for Connect**.

Step 1: Highlight the scanner or MFP you want to share for printing or scanning.



Step 2: Click the tab *Request to Connect*.



Step 3: You will be prompted a window that transmits your request. Please wait patiently for the reply.



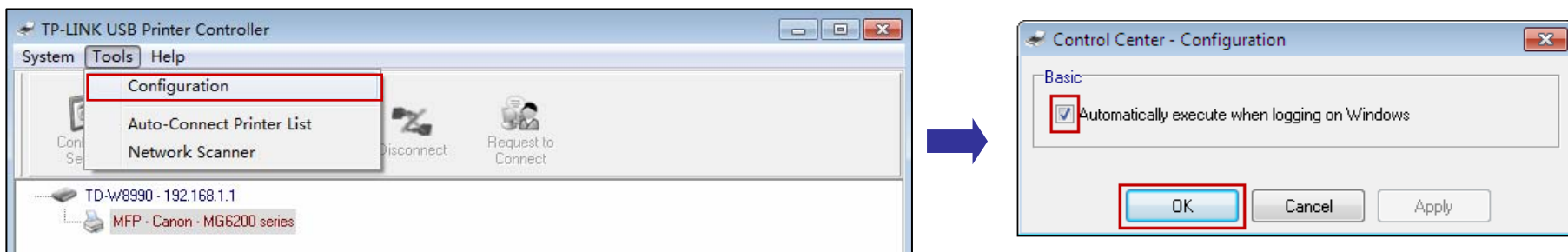
Step 4: If the other user **Accepts** your request to connect, please click **Exit** to start your printing or scanning task.



Other functions/ settings

➤ Configuration

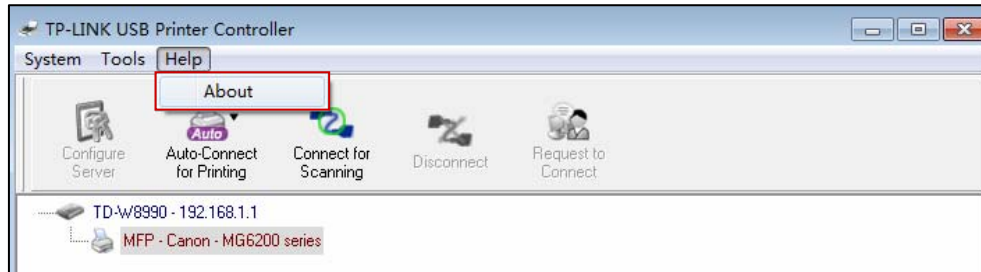
Go to **Tools-> Configuration**, tick the option **Automatically execute when logging on Windows**, and then click **OK**.



With this setting, the TP-LINK USB Printer Controller will run automatically every time you log on your computer.

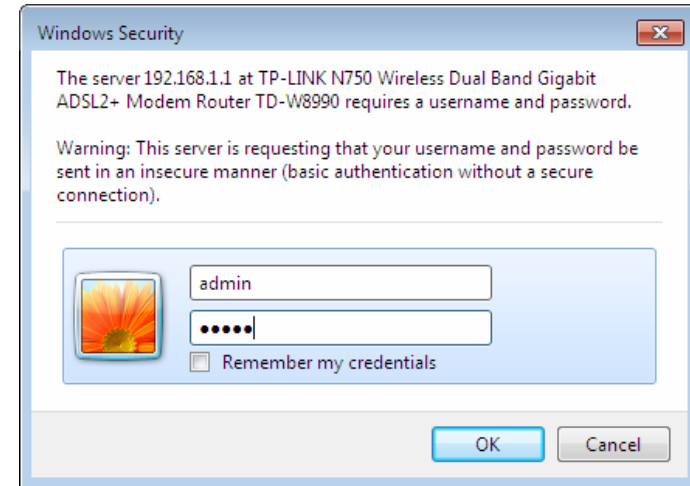
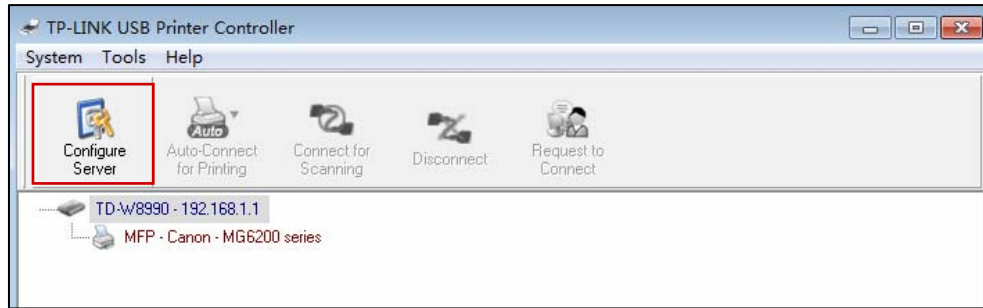
➤ **About**

Go to **Help -> About**, a window will pop up and display some relevant information about this Control Center.



➤ **Configure Server**

Highlight the modem router and click the tab **Configure Server**; the login window of the modem router will pop up. You need to enter the user name and password (both are **admin** by default.) to log in the web-based management page of the modem router.

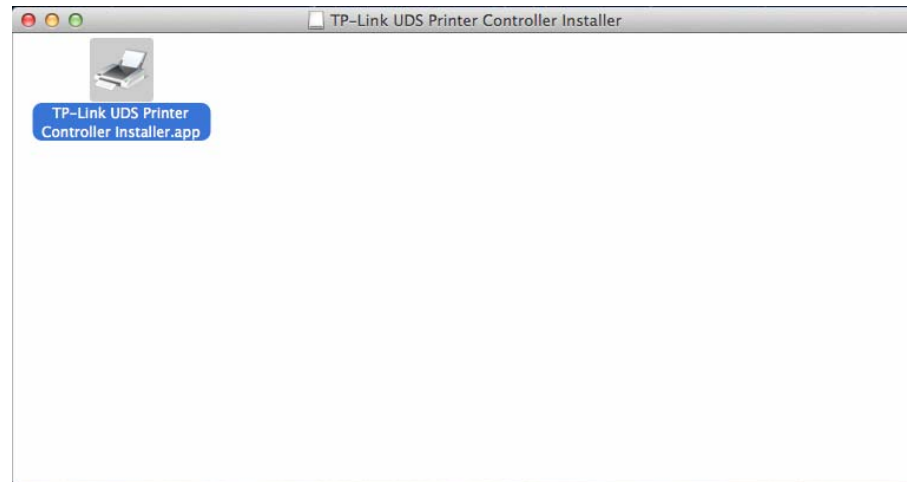
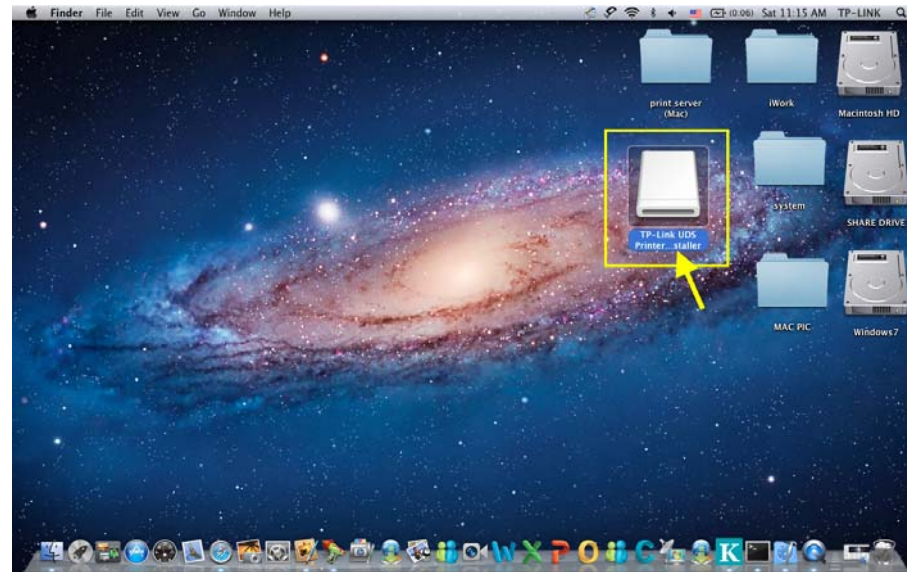


Installation for Mac OS

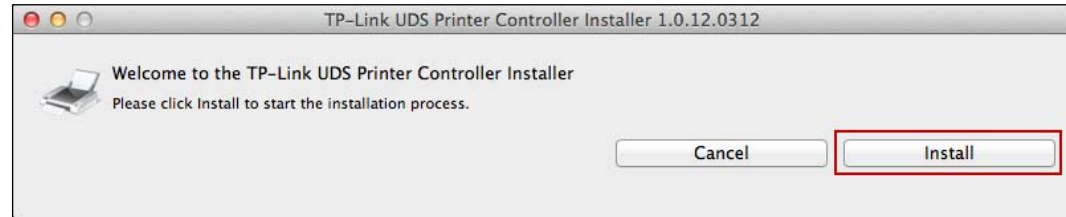
1. Download the setup software **TP-Link UDS Printer Controller Installer.dmg** from our website: www.tp-link.com.

2. Double-click the software you've downloaded.

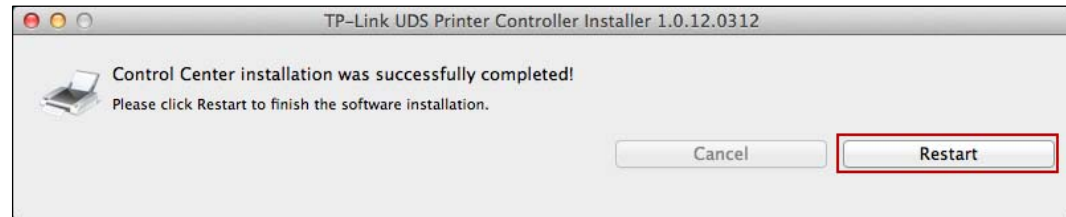
3. Double-click the **TP-Link UDS Printer Controller Installer.app** in the window that pops up.



4. Click ***Install*** to start the installation process.




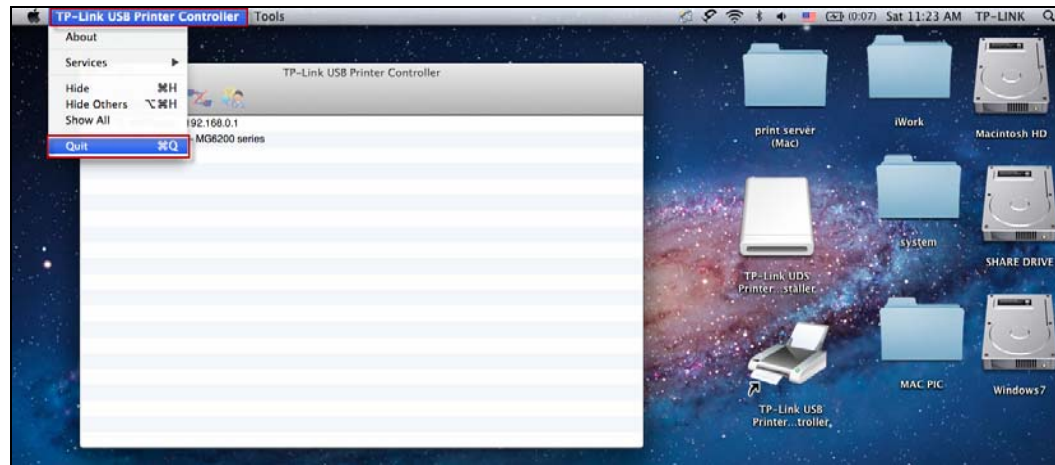
5. Click ***Restart*** to finish the software installation.




Application for Mac OS

How to Launch/Exit the TP-LINK USB Printer Controller

- To launch the USB Printer Controller, double-click the icon  on your desktop.
- To exit the USB Printer Controller, you have two ways:
 - Click **TP-Link USB Printer Controller -> Quit**, when the printer controller is on the process. Or you can press the keyboard **command + Q** to quickly exit the controller.



- Left-click and hold the icon  in the dock for a while, then you can click **Quit** to exit the controller.

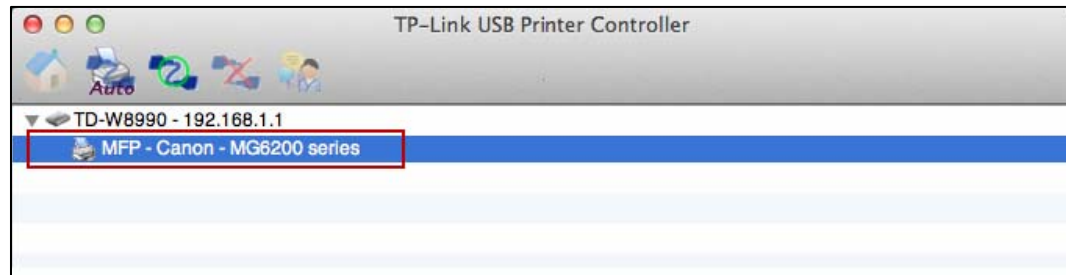


How to Print

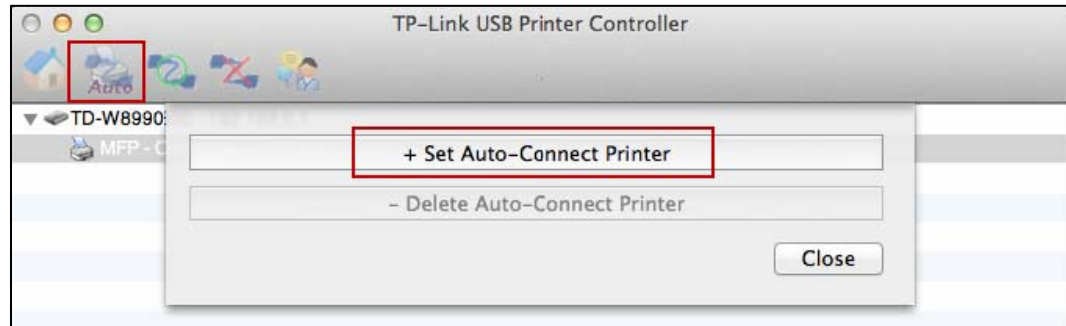
To print, first of all, you need to set your **Auto-Connect Printer**. After successful setting, you can execute your printing tasks automatically.

Please follow the steps below to set your auto-connect printer.

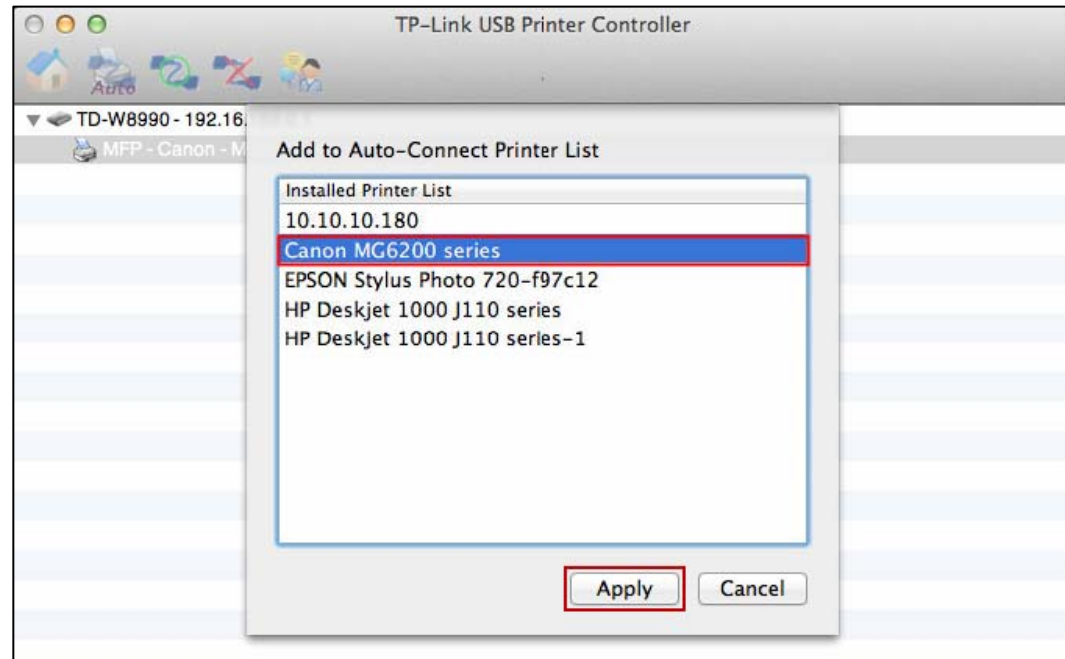
Step 1: Highlight your printer.



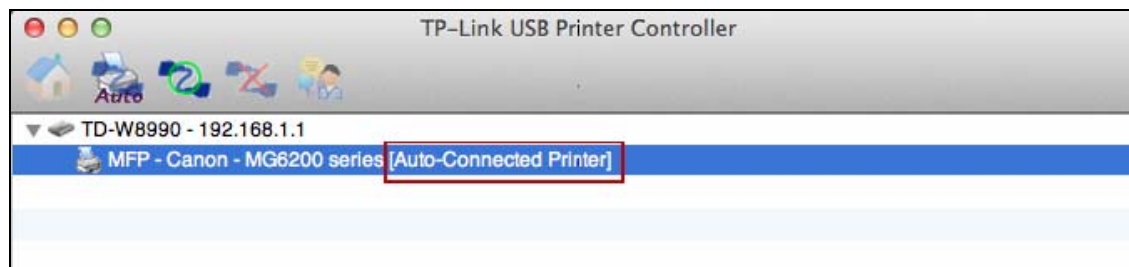
Step 2: Click the tab **Auto-Connect for printing** to pull down a list, where you can select **Set Auto-Connect Printer**.



Step 3: Select the printer you would like to set as auto-connect printer, and then click the **Apply** button.



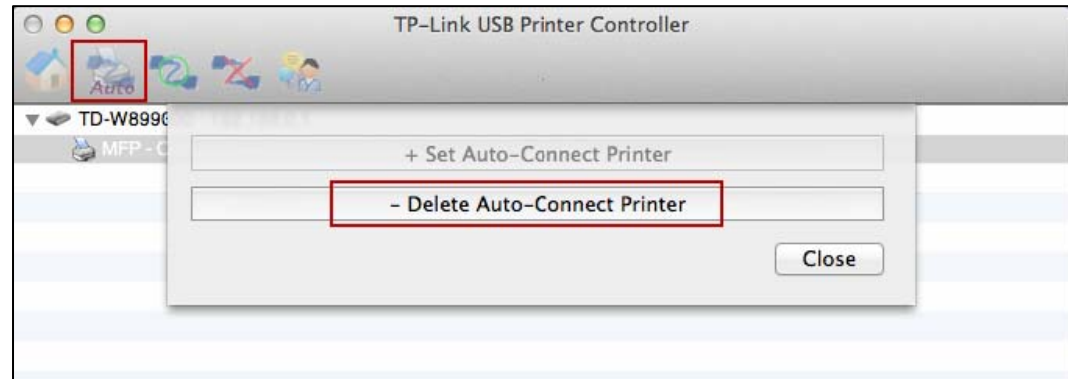
After successful setting, you will see the printer marked as **Auto-Connect Printer**. Then you can execute your printing task freely.



➤ If you want to disable your printer's auto-connect function, you can delete it.

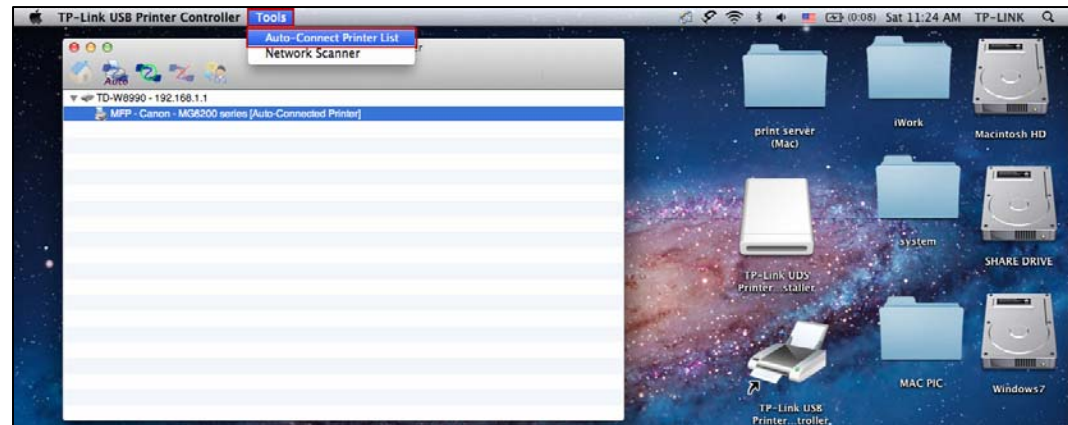
Method One:

Select **Delete Auto-Connect Printer** from the drop-down list of the tab **Auto-Connect for Printing**.

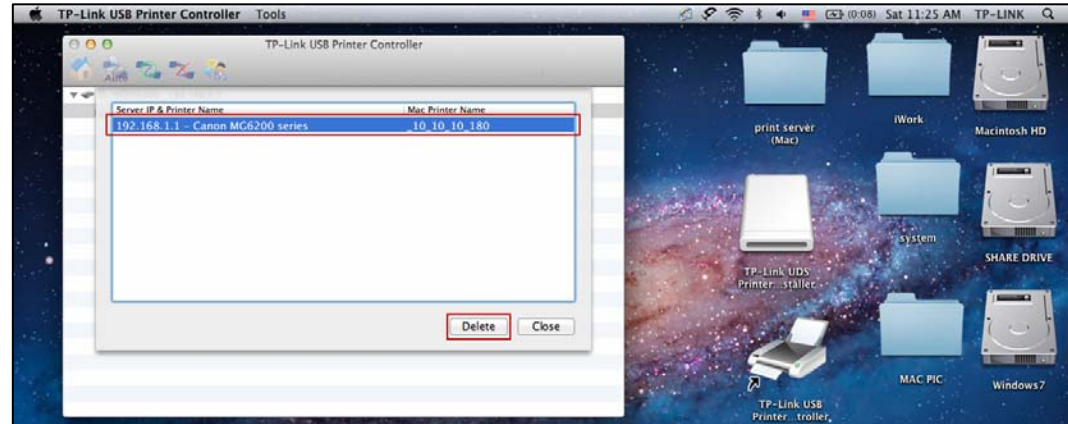


Method Two:

1. Go to **Tools->Auto-Connect Printer List**.



2. Highlight your auto-connect printer and then click **Delete**.

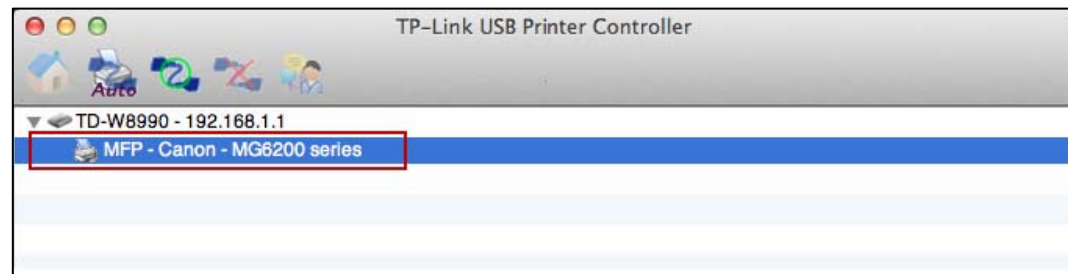


How to Scan

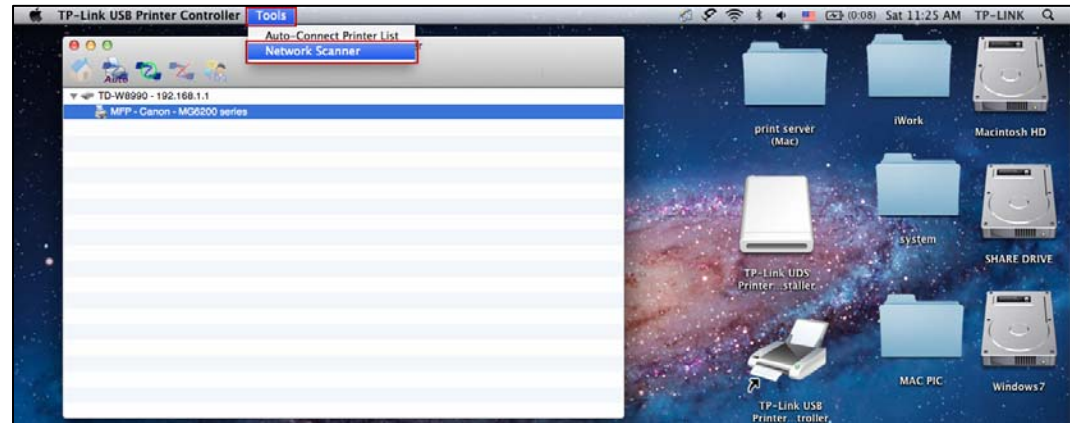
There are two methods available to realize the scanning function.

Method One: Network Scanner

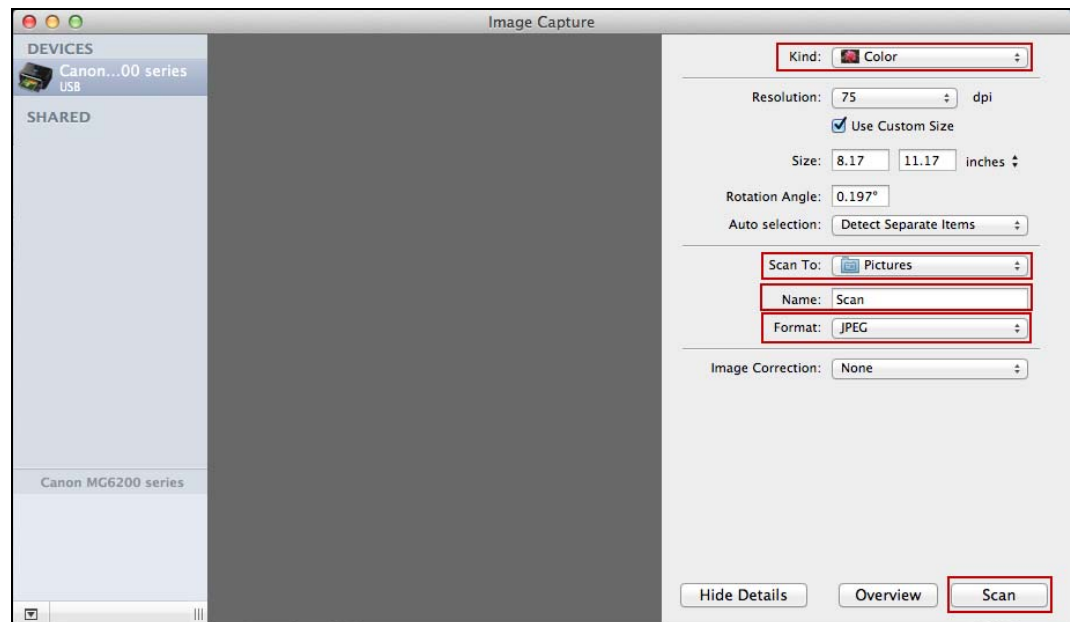
Step 1: Highlight your scanner or MFP.



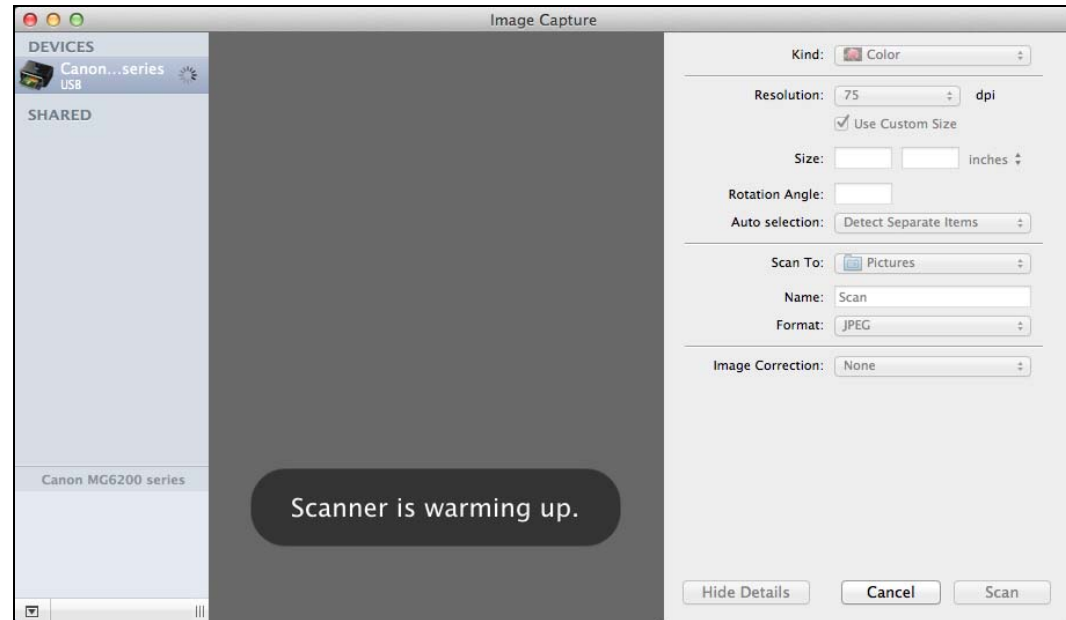
Step 2: Click **Tools** and then select **Network Scanner**.



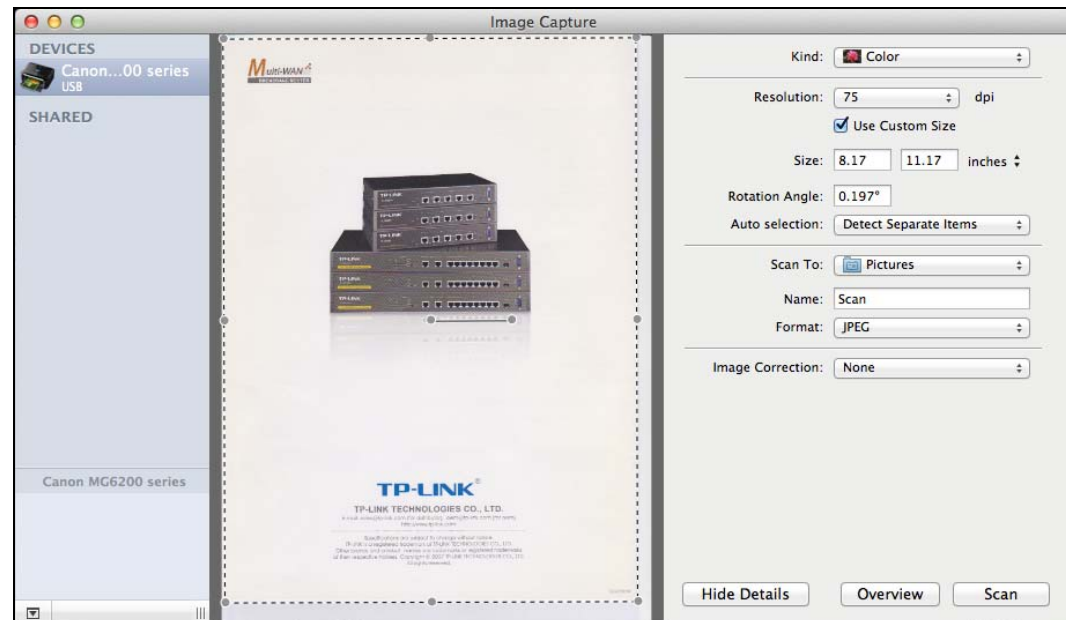
Step 3: Select the kind of picture you want to scan and the destination you want to save it; name your picture and select the format of it. Then click **Scan**.



Step 4: Wait a while for the scan process.



Step 5: When it is completed, you will see the scan result shown in the middle. Then go to the location you've chosen in the previous **Step 3** and find your picture scanned.

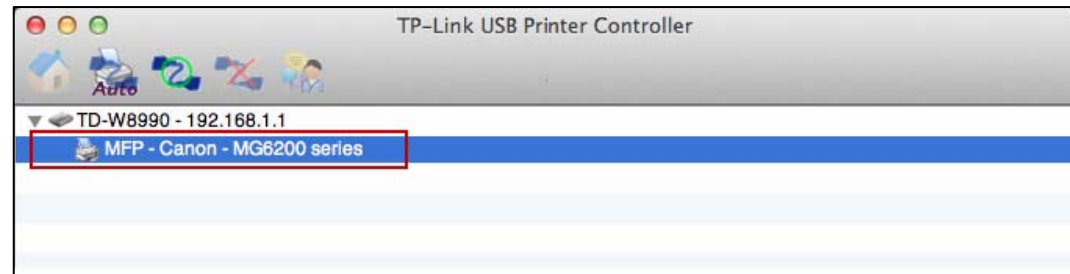


Method Two: Connect for Scanning

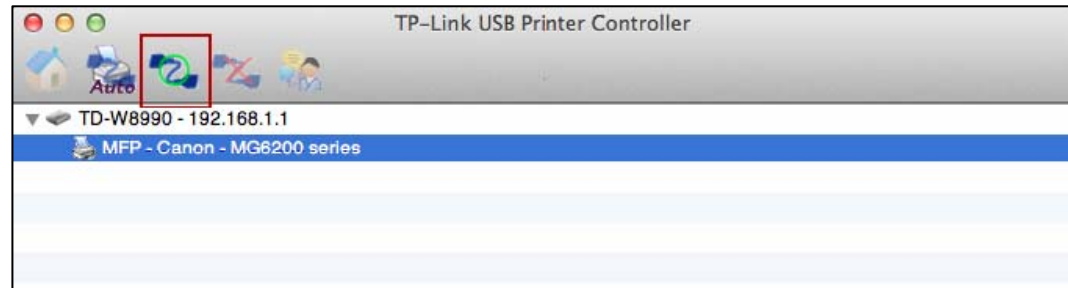
Note:

If you choose this method for scanning, no one else in your LAN can share the scanner or MFP to either print or scan, until you click the tab **Disconnect for Scanning** to release it or accept their **Request to Connect**.

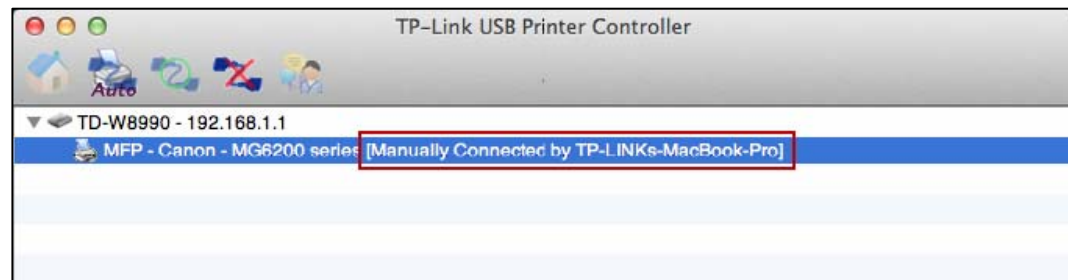
Step 1: Highlight your scanner or MFP.



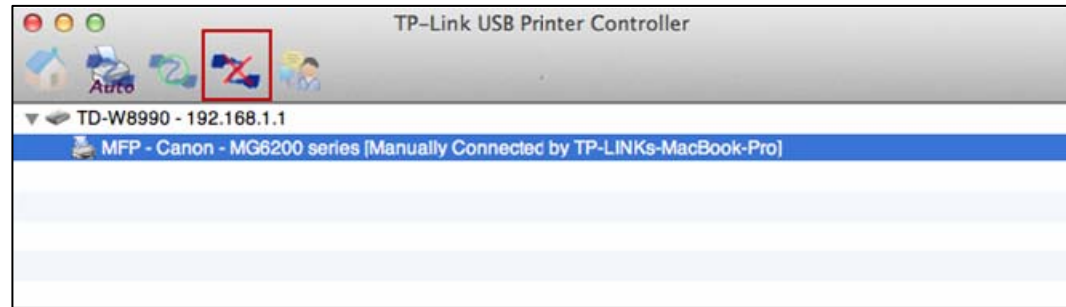
Step 2: Click the tab **Connect for Scanning**.



Successfully set and ready for scanning, it will display **Manually Connected by...**, when you can start your scan task.



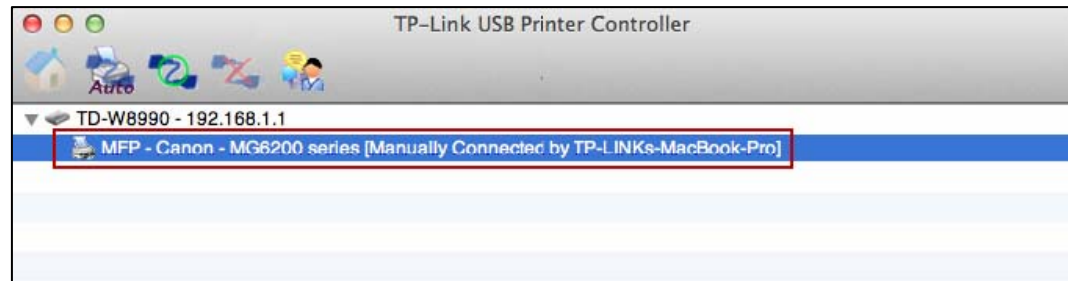
Step 3: After finishing your scan task, please do remember to click the tab **Disconnect for Scanning** to release the scanner or MFP.



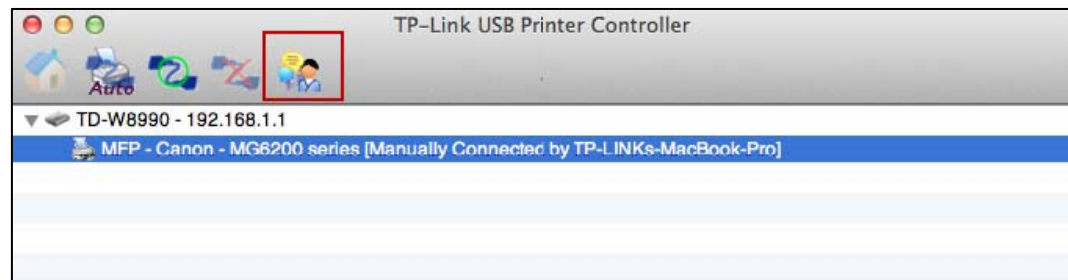
➤ **Request to Connect**

When one computer in your LAN **Connects for Scanning**, it is occupying the scanner or MFP; then if you would like to use it as well, you will have to **Request for Connect**.

Step 1: Highlight the scanner or MFP you want to share for printing or scanning.



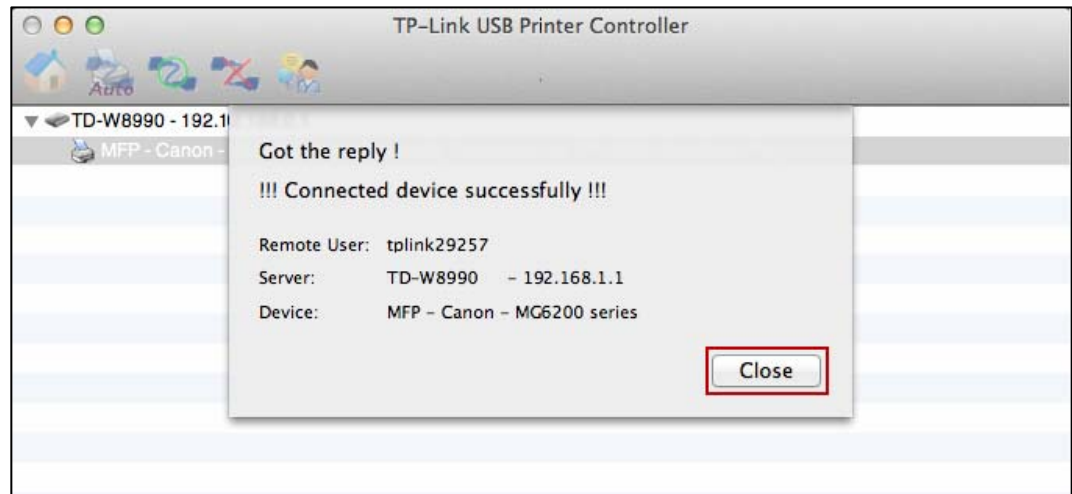
Step 2: Click the tab **Request to Connect**.



Step 3: You will be prompted a window that transmits your request. Please wait patiently for the reply.



Step 4: If the other user **Accepts** your request to connect, please click **Close** to start your printing or scanning task.



Other functions/ settings

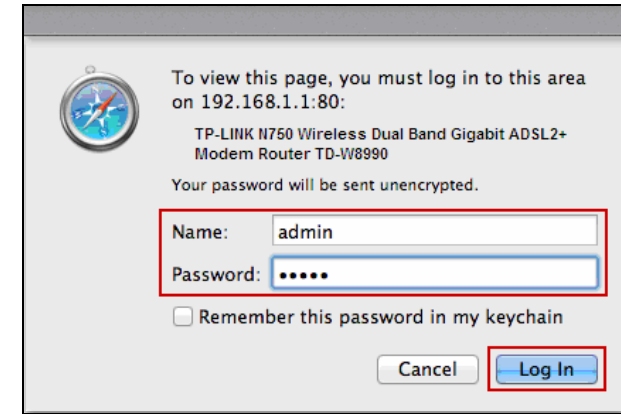
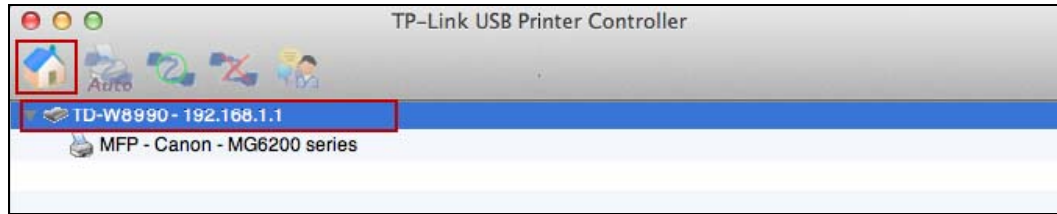
➤ About

Go to **TP-Link USB Printer Controller -> About**; a window will pop up and display some relevant information about this printer controller.




➤ Configure Server

Highlight the Router and click the tab **Configure Server**, the login window of the Router will pop up. You need to enter the user name and password (both are **admin** by default.) to log in the web-based management page of the Router.



➤ Open at Login

Left-click and hold the icon  in the dock for a while, until you can select **Option > Open at Login**.



With this setting, the TP-LINK USB Printer Controller will run automatically every time you log on your Mac.

Troubleshooting

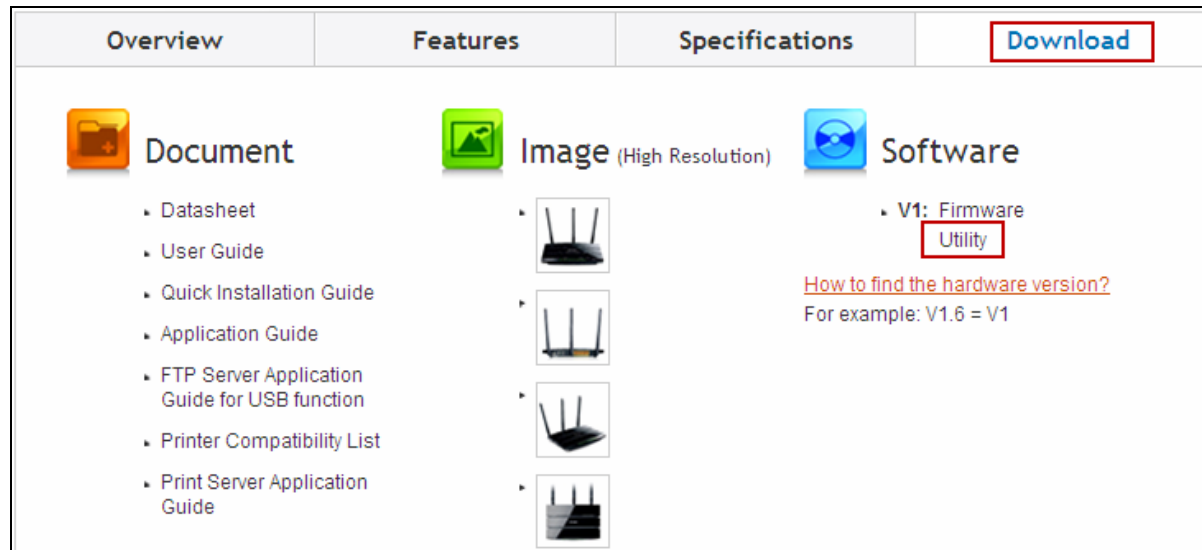
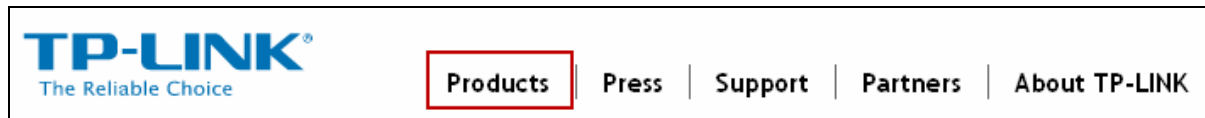
1. Where can I find the printer compatibility list?

Go to our website www.tp-link.com, then go to **Products** ->**ADSL**, find your product model and go to **Download** -> **Document** -> **Printer Compatibility List**.

The screenshot shows the TP-LINK website navigation and product page for ADSL. The top navigation bar includes the TP-LINK logo and the following menu items: **Products**, **Press**, **Support**, **Partners**, and **About TP-LINK**. The **Products** menu item is highlighted with a red box. A blue arrow points down to the product page, which has four tabs: **Overview**, **Features**, **Specifications**, and **Download**. The **Download** tab is highlighted with a red box. Below the tabs, there are three main sections: **Document**, **Image (High Resolution)**, and **Software**. The **Document** section contains a list of documents: **Datasheet**, **User Guide**, **Quick Installation Guide**, **Application Guide**, **FTP Server Application Guide for USB function**, **Printer Compatibility List** (highlighted with a red box), and **Print Server Application Guide**. The **Image (High Resolution)** section contains four images of different ADSL routers. The **Software** section contains a list of software: **V1: Firmware Utility**, and a link [How to find the hardware version?](#) with the example **For example: V1.6 = V1**.

2. Where can I find the relevant software for installation?

Go to our website www.tp-link.com, then go to **Products** ->**ADSL**, find your product model and go to **Download** ->**Software** -> **Utility**. Then next web page will be loaded, where you can select the **USB Printer Controller_Utility** and download it.

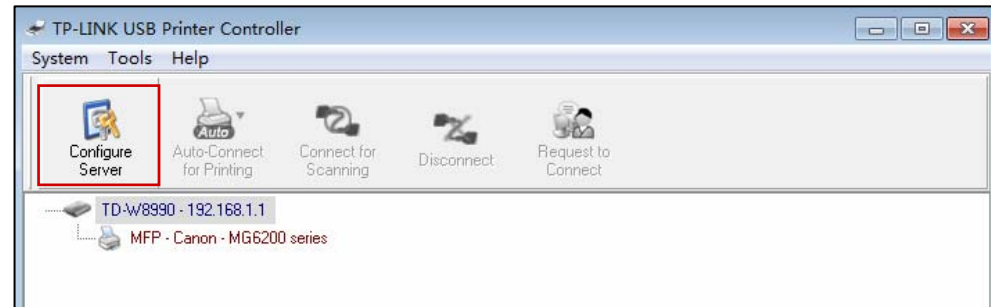


3. How to manage the print server on the web-based management page?

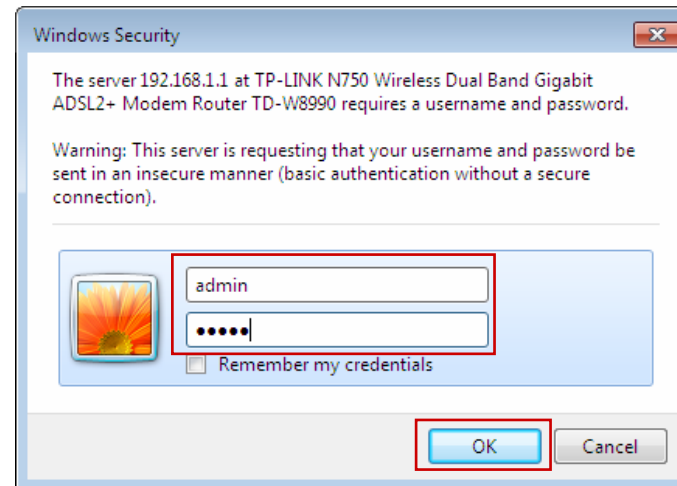
The modem router's Print Server function is enabled by default. To disable the function, you need to log onto the Web-based management page. See the following instructions (Here takes that in Windows 7 for example):

1) Make sure you have a PC or notebook connected to the modem router, either via wireless or wired connection.

2) Launch the TP-LINK USB Printer Controller, highlight the modem router and click the tab **Configure Server**.



3) After a moment, a login window will appear. Enter **admin** (in lower case letters) for both the User Name and Password. Then click the **OK** button or press the **Enter** key.



4) Go to **USB Settings -> Print Server**. Click **Stop** to disable the function. Click **Start** to enable the function.

