

TP-LINK®

TL-WN821N **User Guide**

300Mbps Wireless N USB Adapter

Contents

About This Guide	1
Chapter 1. Get to Know About Your Adapter.....	2
1. 1. Product Overview	3
1. 2. LED Status	3
Chapter 2. Connect to a Computer	4
Chapter 3. Windows.....	6
3. 1. Install Driver and Utility.....	7
3. 2. Join a Wireless Network.....	10
3. 2. 1. Windows Wireless Utility	10
3. 2. 2. TP-LINK Utility.....	11
3. 2. 3. WPS (Wi-Fi Protected Setup)	13
3. 3. Management	17
3. 3. 1. Status.....	17
3. 3. 2. Profile	18
3. 3. 3. Advanced.....	21
3. 3. 4. SoftAP	21
3. 3. 5. About	23
3. 4. Uninstall Driver and Utility.....	23
Chapter 4. Mac OS X.....	25
4. 1. Install Driver and Utility.....	26
4. 2. Join a Wireless Network.....	31
4. 2. 1. TP-LINK Utility.....	31
4. 2. 2. WPS (Wi-Fi Protected Setup)	33
4. 3. Management	37
4. 4. Uninstall Driver and Utility.....	39
Chapter 5. Linux	40

About This Guide

This guide is a complementation of Quick Installation Guide. The Quick Installation Guide instructs you on quick Internet setup, and this guide provides details of each function and shows you the way to configure these functions appropriate to your needs.

When using this guide, please notice that features of the adapter may vary slightly depending on the model and software version you have. All screenshots, images, parameters and descriptions documented in this guide are used for demonstration only.

Conventions

In this guide, the following conventions are used:

Convention	Description
<i>Blue Italic</i>	Hyperlinks are in blue italic. You can click to redirect to a website or a specific section.
Blue	Contents to be emphasized and texts on the web page are in blue, including the menus, items, buttons, etc.
Note:	Ignoring this type of note might result in a malfunction or damage to the device.
Tips:	Indicates important information that helps you make better use of your device.

More Info

- The latest software and utility can be found at [Download Center](http://www.tp-link.com/support) at <http://www.tp-link.com/support>.
- The Quick Installation Guide (QIG) can be found where you find this guide or inside the package of the product.
- Specifications can be found on the product page at <http://www.tp-link.com>.
- A Technical Support Forum is provided for you to discuss our products at <http://forum.tp-link.com>.
- Our Technical Support contact information can be found at the [Contact Technical Support](http://www.tp-link.com/support) page at <http://www.tp-link.com/support>.

Chapter 1

Get to Know About Your Adapter

This chapter introduces what the adapter can do and shows its appearance.

This chapter contains the following sections:

- *Product Overview*
- *LED Status*

1.1. Product Overview

TP-LINK's Wireless USB Adapter connects your notebook or desktop computer to a wireless network for applications such as lag-free video streaming, online gaming, and secure Internet surfing. And the adapter has following features:

- Complies with IEEE 802.11n, IEEE 802.11g, IEEE 802.11b standards
- Supports WPA/WPA2 data security, IEEE802.1x authentication, TKIP/AES encryption, WEP encryption
- Supports high rate of up to 300Mbps for maximum throughput, and automatically adjust to lower speeds due to distance or other operating limitations
- Provides USB 2.0 interface
- Supports Ad Hoc and Infrastructure modes
- Good capability on anti-jamming
- Supports roaming between access points when configured under Infrastructure mode
- Easy to configure and provides monitoring information
- Provides internal antennas
- Supports Windows, Mac and Linux

1.2. LED Status



You can check the adapter's working status by following the LED Explanation table.

Status	Indication
Off	The driver has not been installed. The adapter's radio has been disabled.
Flashing Slowly	The driver has been installed but no data is being transmitted or received.
Flashing Quickly	Data is being transmitted or received.

◆ Tips:

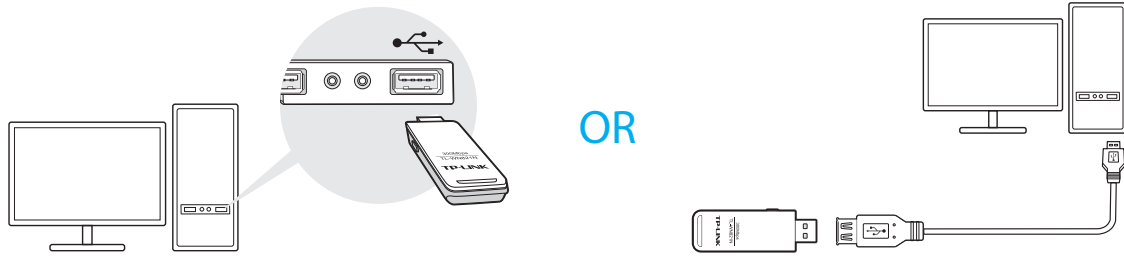
If the LED is off, try these troubleshooting tips:

1. Remove and reinsert the adapter.
2. Insert the adapter in a different USB port on your computer if one is available.
3. For Windows users, check the Windows device manager to see if the adapter is recognized and enabled. Reinstall the adapter software, if necessary.

Chapter 2

Connect to a Computer

Before you begin using your adapter, insert the adapter into a USB port on your computer directly.



■ **Note:**

1. In Windows XP, a **Found New Hardware Wizard** window will appear when the adapter is detected. Please click **Cancel**.
2. The adapter is compatible with a USB 2.0 or USB 1.1 port.

After connecting your adapter to the computer, please follow the instructions in the appropriate chapter for your operating system: [Windows](#), [Mac OS X](#), [Linux](#).

Chapter 3

Windows

This chapter introduces how to install your adapter's driver and utility, use your adapter to join a wireless network, manage your adapter, and uninstall your adapter in a Windows system. The adapter is equipped with a Setup wizard, which can guide you through the installation process.

This chapter includes the following sections:

- *Install Driver and Utility*
- *Join a Wireless Network*
- *Management*
- *Uninstall Driver and Utility*

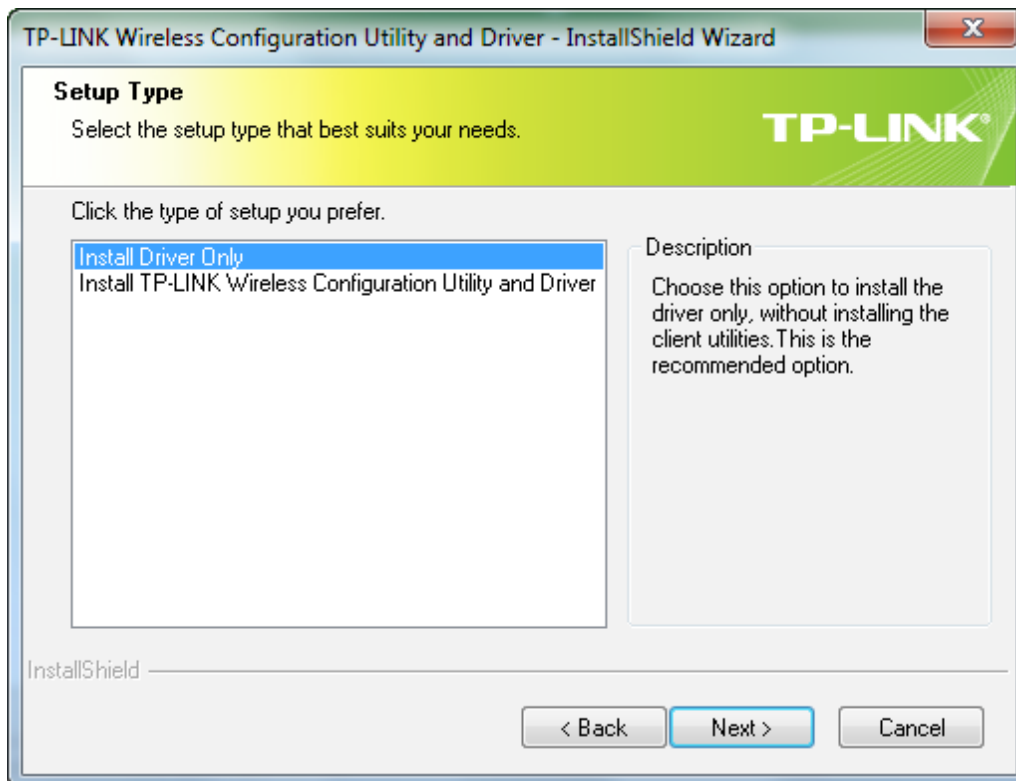
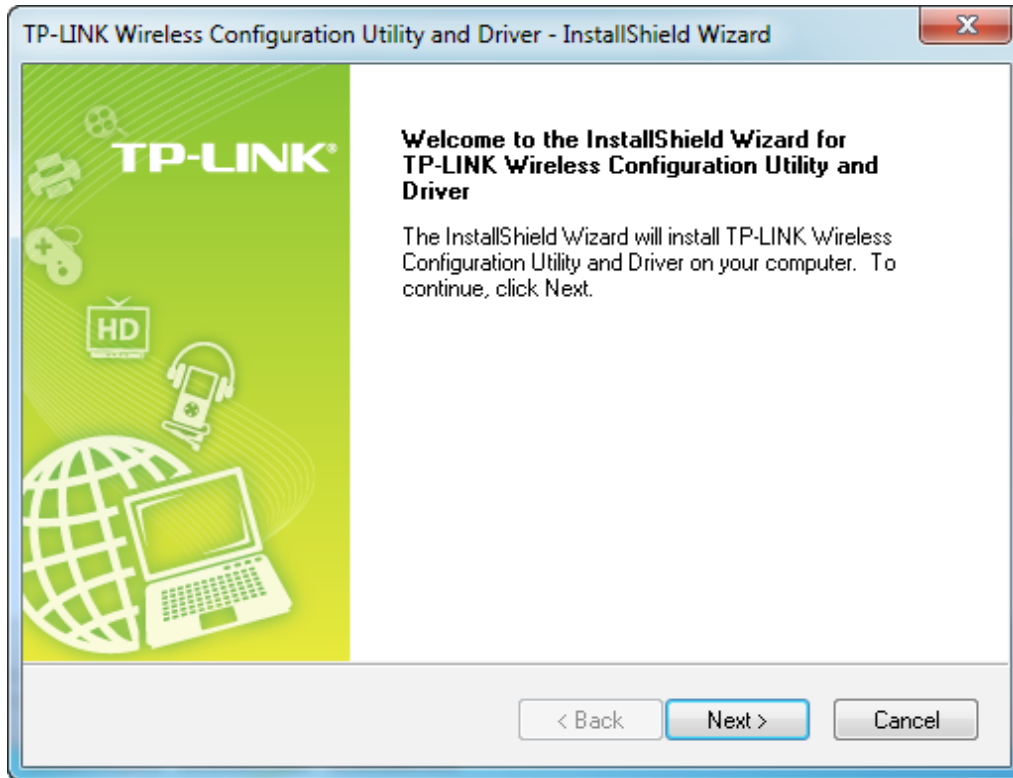
3.1. Install Driver and Utility

To set up your adapter with several easy steps quickly:

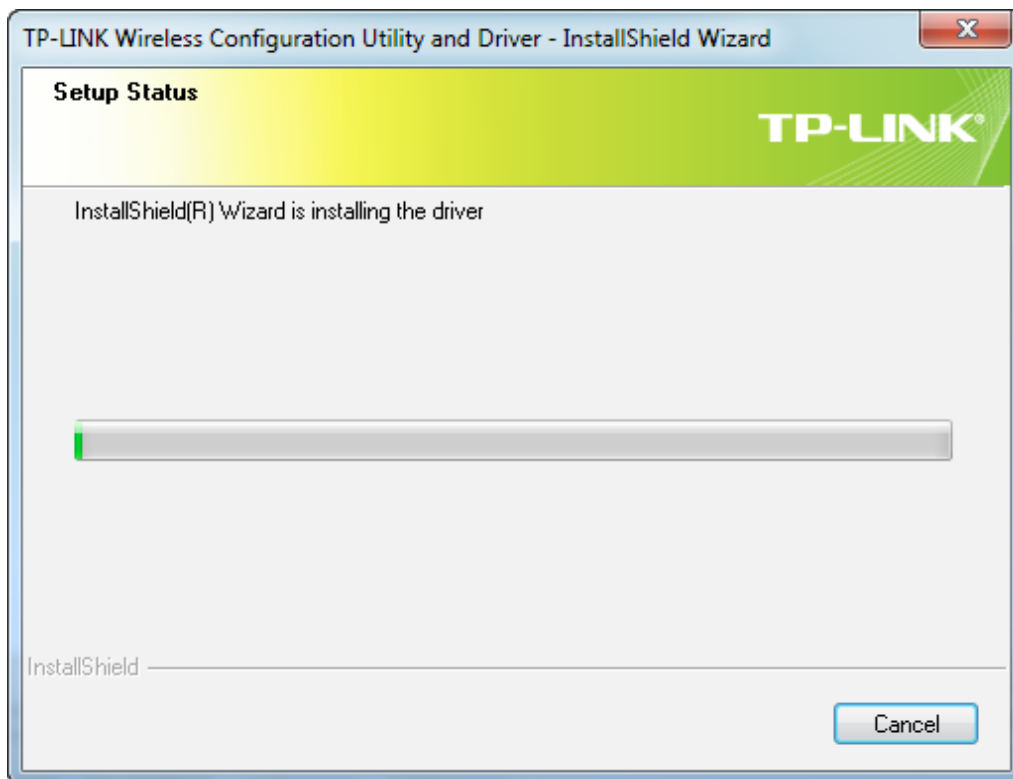
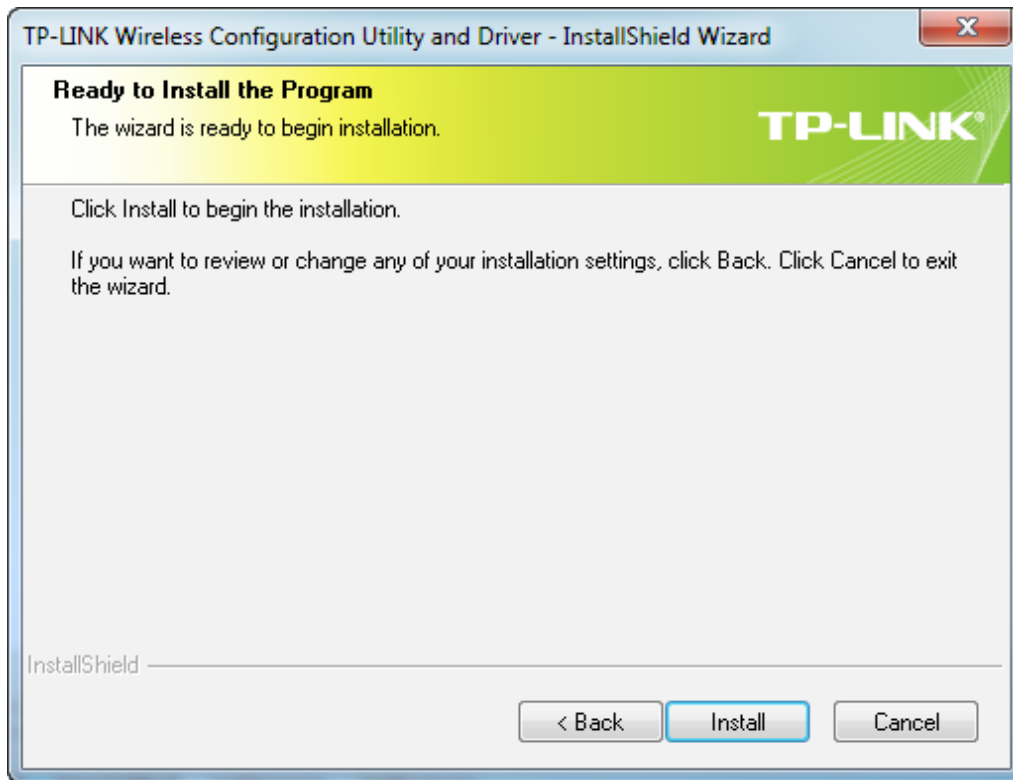
1. Insert the resource CD into your CD drive and run the [Autorun.exe](#) from the pop-up AutoPlay window. Select [TL-WN821N](#) and click [Install Driver](#) to begin.

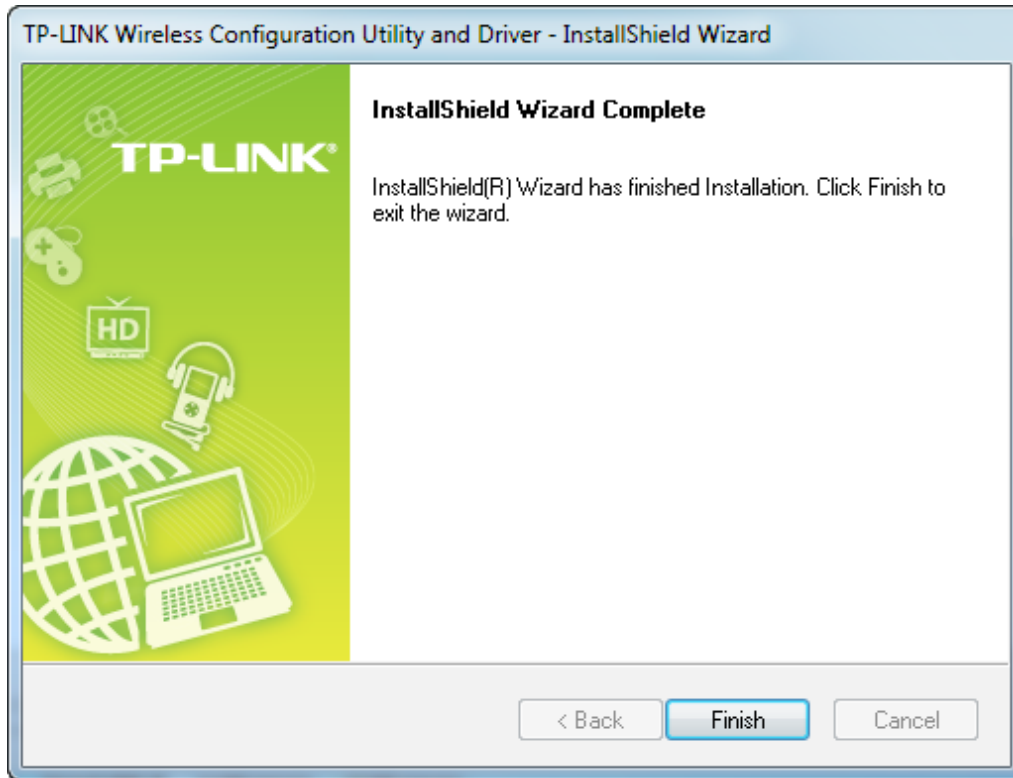


2. Follow the step-by-step instructions of the Quick Setup to complete the initial configuration.

**Note:**

The default setup type is [Install Driver Only](#). You can also select [Install TP-LINK Wireless Configuration Utility and Driver](#) for more functions, such as joining a wireless network via TP-LINK Utility or WPS, and managing the adapter.





3.2. Join a Wireless Network

You can join a wireless network via Windows built-in Wireless Utility. If you want to use Option 2: TP-LINK Utility or Option 3: WPS (Wi-Fi Protected Setup) to join a wireless network, you need to install the TP-LINK Utility first.

Option 1: [Windows Wireless Utility](#)

You can use the Windows WLAN Autoconfig service (for Windows 7/8/8.1/10) and the Wireless Zero Configuration service (for Windows XP) to join a Wi-Fi network.

Option 2: [TP-LINK Utility](#)

TP-LINK Utility lets you easily connect the adapter to a Wi-Fi network and manage the adapter.






Option 3: [WPS \(Wi-Fi Protected Setup\)](#)

WPS (Wi-Fi Protected Setup) is a network security standard for easily adding computers and other devices to a home network. Use this method if your wireless router or access point supports WPS.

3.2.1. Windows Wireless Utility

Follow the instructions in the appropriate section below to use your computer system's built-in wireless utility: [Windows 7/8/8.1/10](#), [Windows XP](#).

• Windows 7/8/8.1/10

1. Click ,  or  (Network icon) on the taskbar. Select the Wi-Fi network you want to join, and click **Connect**. Enter the network password when prompted.
2. When the network icon changes to  or , it indicates a successful network connection.


■ Note:

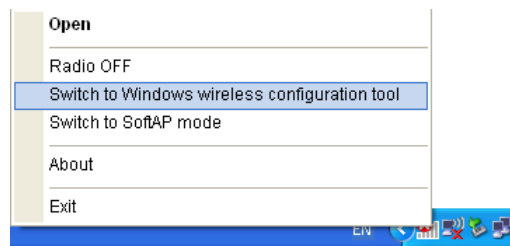
If you do not want to enter the Wi-Fi password, you can also join a wireless network either by pushing the WPS or QSS button on your router or AP, or entering the PIN of your router when the screen prompts you to do so.

• Windows XP

1. If you have not installed the TP-LINK Utility, go to step 2.

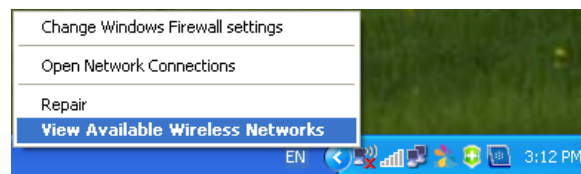
If you have installed the TP-LINK Utility, you need to switch to use the Windows wireless configuration tool manually using one of the following methods.

Method 1: Right-click  (TP-LINK Utility icon) on the taskbar. (If you do not see the icon, click the hidden icons arrow on the taskbar.) Select **Switch to Windows wireless configuration tool**.



Method 2: Open the TP-LINK Utility and select **Advanced** tab. Select **Use Windows wireless configuration tool**. Click **OK** when it prompts.

2. Right-click  (Windows XP Wireless Zero Configuration Utility icon) on the task bar, and select **View Available Wireless Networks**.



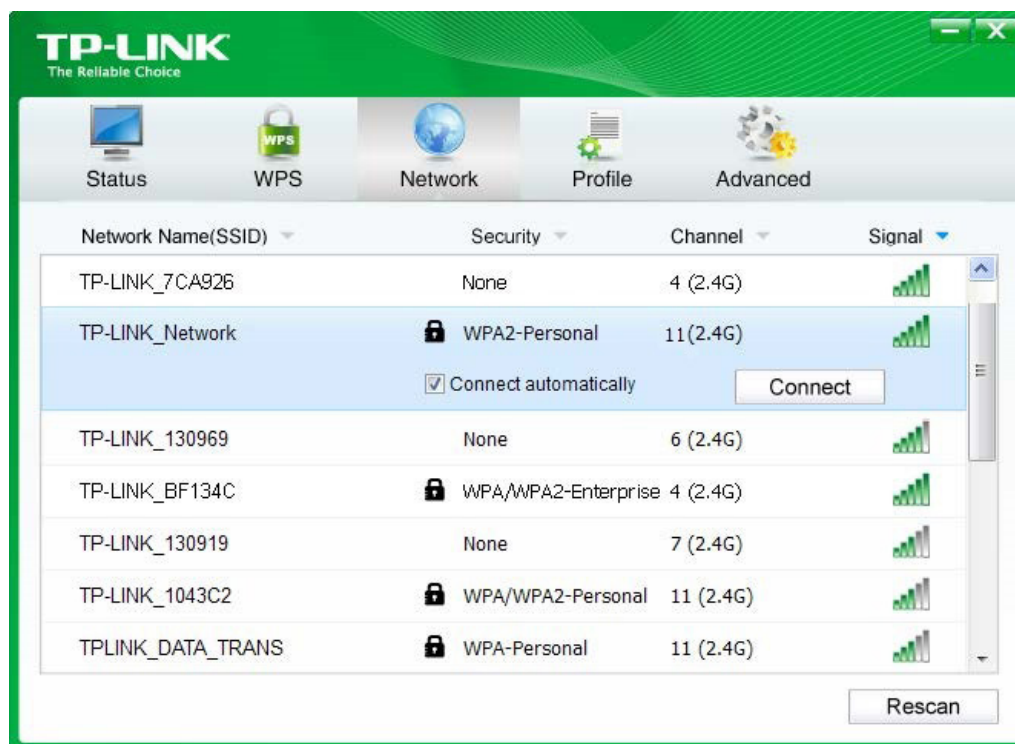
3. Select the network you want to join, and click **Connect**. Enter your Wi-Fi password when prompted.

3.2.2. TP-LINK Utility

1. Open TP-LINK Utility . The Network screen displays.



- Select the network you want to join from the list on this screen and click **Connect**. If you want the adapter to automatically connect to the network next time, select the **Connect automatically** checkbox. Enter your Wi-Fi password when prompted.



Note:

If your Wi-Fi network is not displayed in the list, you can try to join it by WPS or by adding a profile in the Profile screen.

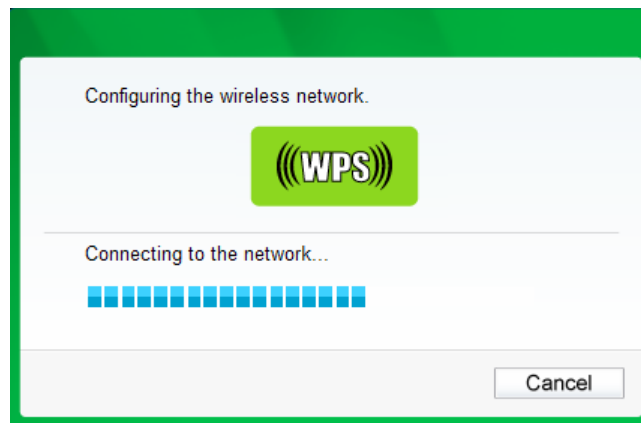
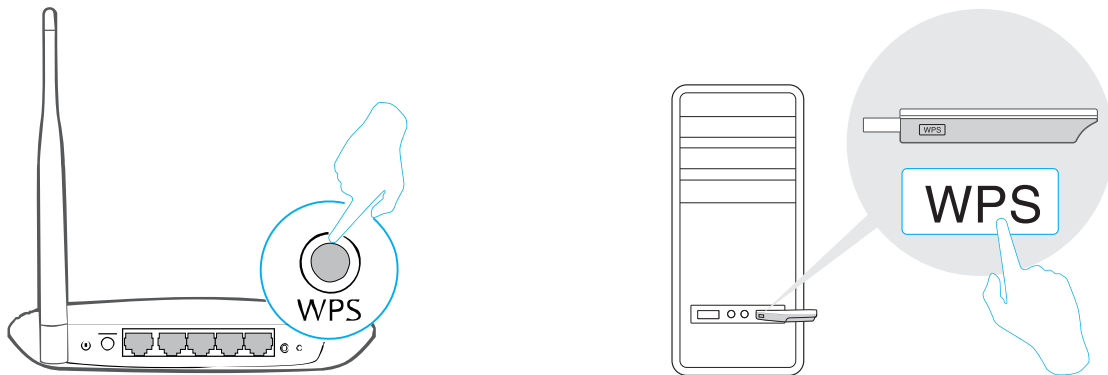
3.2.3. WPS (Wi-Fi Protected Setup)

WPS can be activated via PBC (Push Button Configuration) and PIN code. Please refer to [PBC](#) or [PIN](#) below.

- PBC

Option 1

1. Press the WPS/QSS button on your router or AP. Within 2 minutes, press and hold the WPS button on the adapter until the following screen appears.

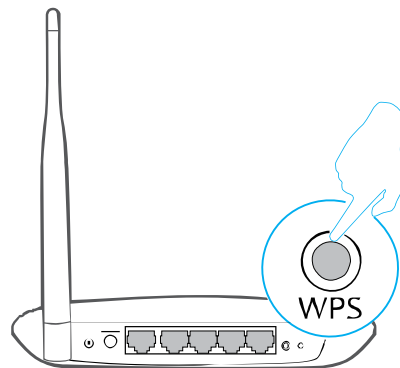


2. The following screen indicates a successful connection by WPS. Click [OK](#).



Option 2

1. Press the WPS/QSS button on your router or AP.



2. Open TP-LINK Utility and click **WPS** tab. Select **Push the button on my access point or wireless router** and click **Connect**.



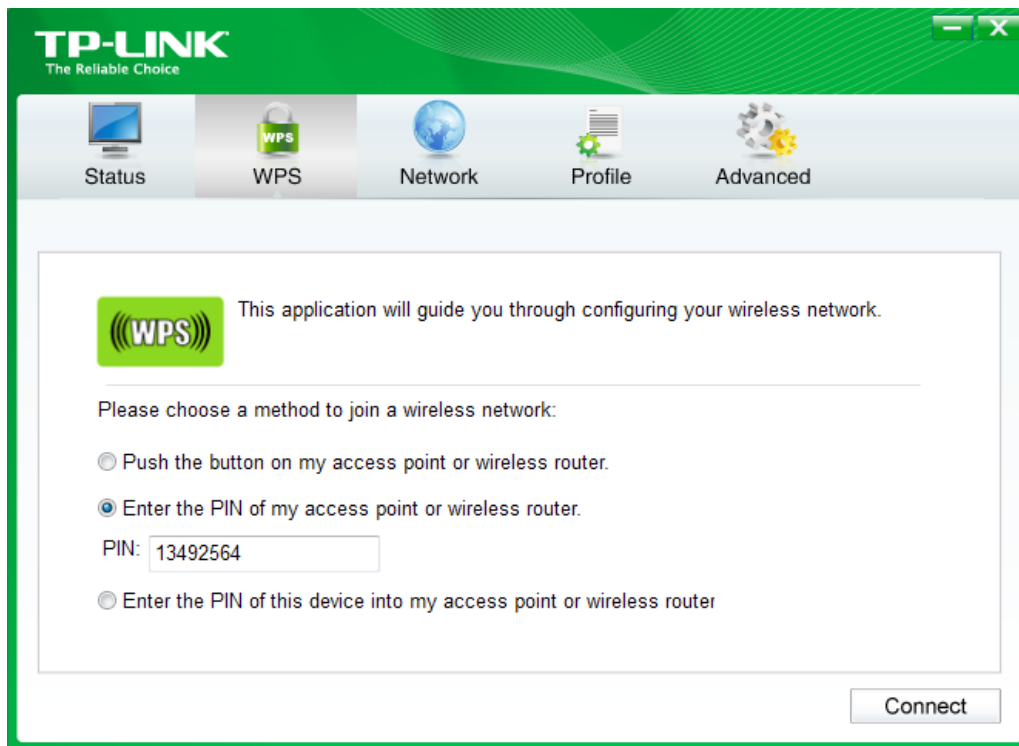
3. The following screen indicates a successful connection by WPS. Click **OK**.



- PIN

Option 1

1. Open TP-LINK Utility and click **WPS** tab. Select **Enter the PIN of my access point or wireless router**. Enter the PIN of your router or AP. Click **Connect**.



■ **Note:**

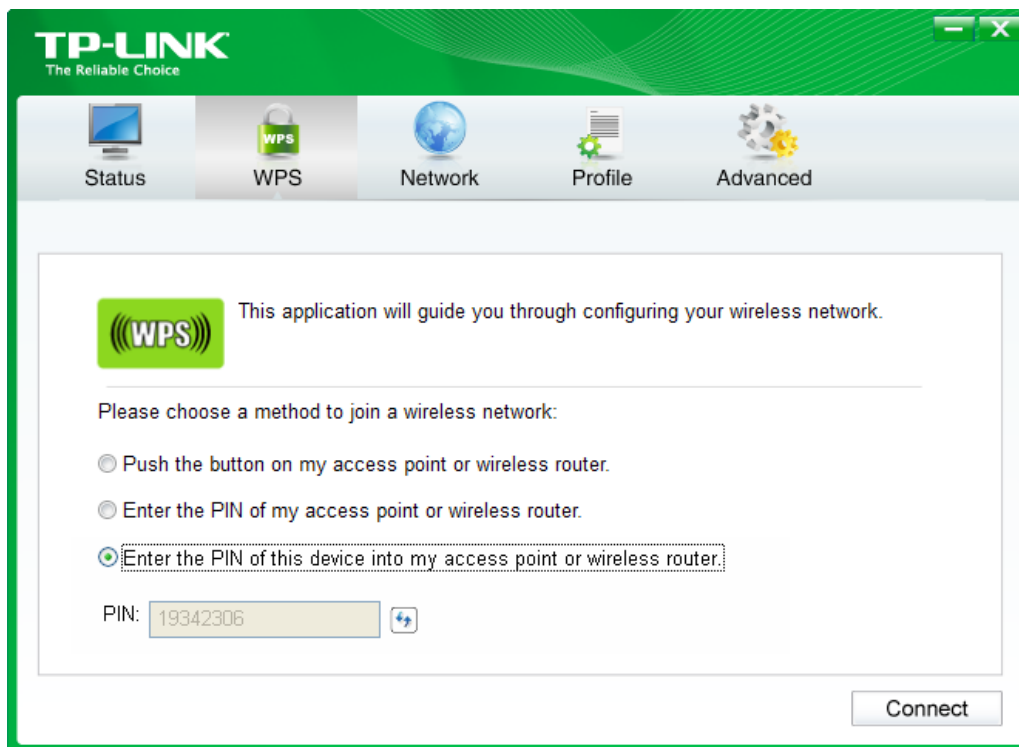
The default PIN of your router or AP is printed on the product label of your router or AP. If you generated a new PIN for your router, please enter the new one.

2. The following screen indicates a successful connection by WPS. Click **OK**.



Option 2

1. Open TP-LINK Utility and click **WPS** tab. Select **Enter the PIN of this device into my access point or wireless router**. The screen displays a PIN of the adapter, which is generated randomly. Click **Connect**.



2. Log in to the Web Management page of your router or AP. Go to the WPS page, enter the PIN of the adapter in the corresponding field and click **Connect**.
3. The following screen indicates a successful connection by WPS. Click **OK**.



3.3. Management

TP-LINK Utility provides you with an easy way to manage your adapter. It includes the following sections:

Status - View the information of the current Wi-Fi network connection and of the adapter.

Profile - Save or manage various connection settings of your Wi-Fi network.

Advanced - Turn on or off the SoftAP mode and power saving mode, switch between TP-LINK Utility and Windows Wireless Utility (for Windows XP only).

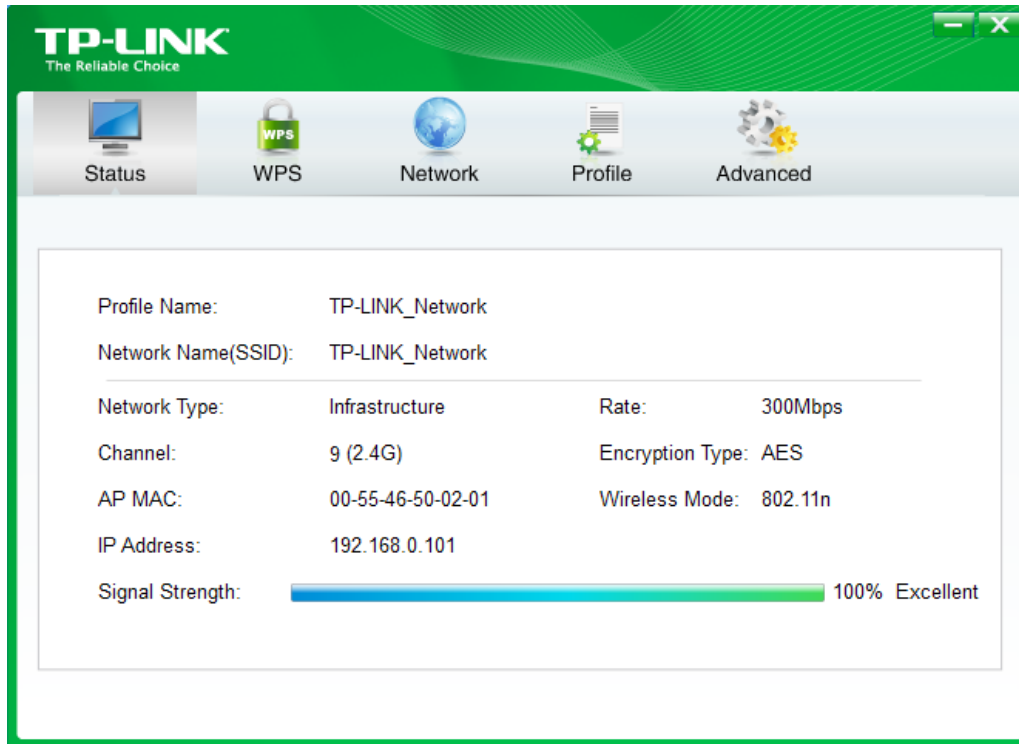
SoftAP - Configure the settings of the network shared by your adapter, and view the IP address of your adapter when it works on SoftAP mode.

About - View your adapter's Utility version and its Driver version.

Open TP-LINK Utility  and click the **Status**, **Profile** or **Advanced** tab to manage the corresponding section of your adapter.

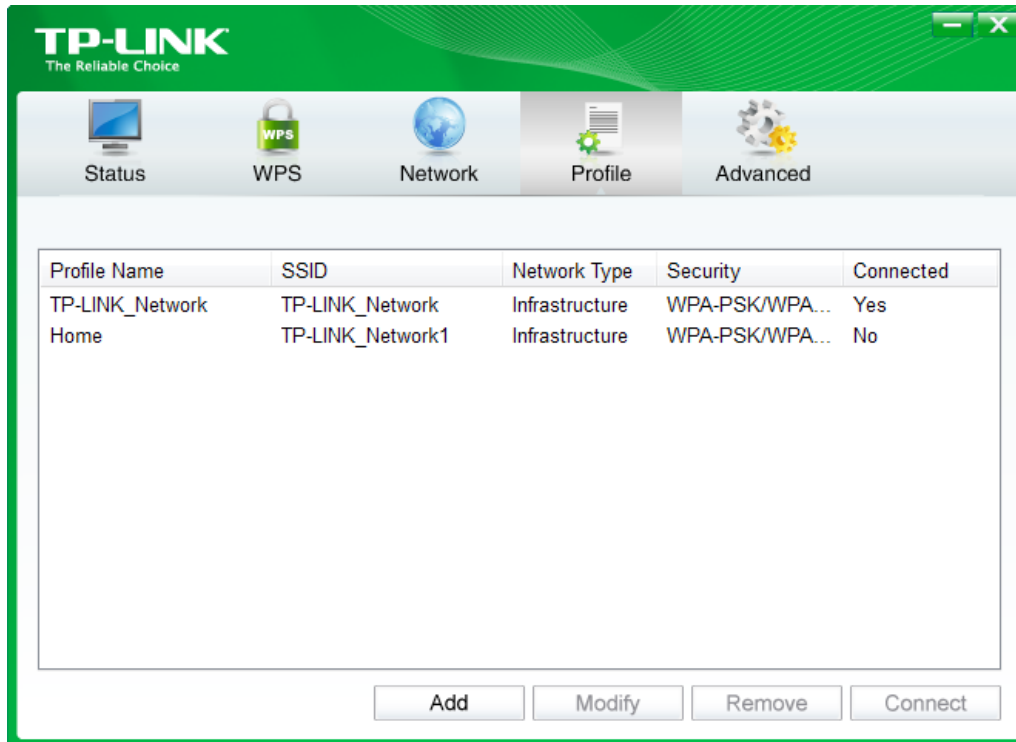
3.3.1. Status

You can view the IP address and MAC address of the adapter, the signal strength of the Wi-Fi network, and other information of the network status as shown in the following figure.



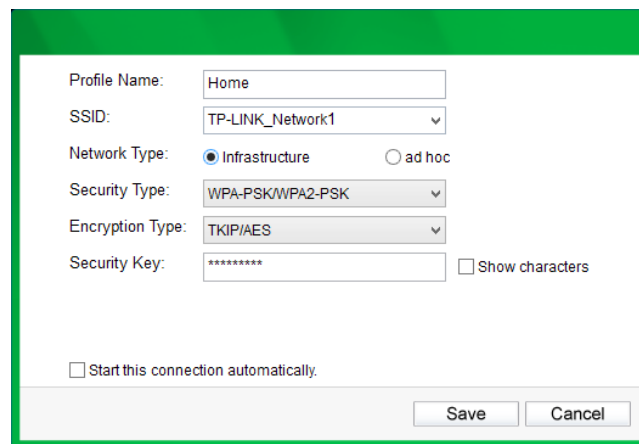
3.3.2. Profile

The Profile screen lets you save and manage different Wi-Fi connection settings as profiles so that you can quickly and simply connect to your network. Moreover, you can join a hidden Wi-Fi network that does not broadcast its SSID by adding a profile, provided that you know its wireless settings, such as SSID, security type, and encryption type. For more details, please refer to the instructions below: To add a new profile, To join a Wi-Fi network, To manage an existing profile.



- **To add a new profile**

1. Click the **Add** button, and then a new window will open.
2. Complete the settings as shown in the following figure, and click **Save**.



Profile Name: Enter a name for your profile, such as Home, Office, Coffeehouse. Do not enter the profile name that already exists.

SSID: Select your Wi-Fi network from the drop-down list or enter your Wi-Fi network name manually.

Network Type: Select **Infrastructure** if you want to connect to a wireless router or an access point. Select **ad hoc** if you want to connect to another wireless client, such as an adapter.

Infrastructure:

If you select [Infrastructure](#), you are asked to select or enter the corresponding wireless settings, which should be the same as those of your Wi-Fi network.

ad hoc:

If you select [ad hoc](#), you are asked to configure the wireless settings for your network, including choosing the operating frequency band, the security type, the encryption type and setting a security key.

The screenshot shows a dialog box for configuring a wireless network profile. The fields are as follows:

- Profile Name: Home 2
- SSID: TP-LINK_Network2
- Network Type: Infrastructure ad hoc
- Security Type: WEP
- Encryption Type: Open
- Key Index: 1
- Key Format: ASCII_64
- Security Key: *****
- Show characters:
- Start this connection automatically:

Buttons: Save, Cancel

Note:

As for Key Index, you can select ASCII or Hexadecimal format from the drop-down list.

ASCII_64 - Please enter 5 ASCII characters.

ASCII_128 - Please enter 13 ASCII characters.

Hexadecimal_64 - Please enter 10 Hexadecimal digits (any combination of 0-9, a-f, A-F, excluded space).

Hexadecimal_128 - Please enter 26 Hexadecimal digits (any combination of 0-9, a-f, A-F, excluded space).

• **To join a Wi-Fi network**

If you want to join a Wi-Fi network that listed in the profile screen, select the profile and click [Connect](#) in the bottom right corner.

• **To manage an existing profile**

If you want to change the name or the wireless settings of an existing profile, select it and click [Modify](#) of the Profile screen, then you can edit the settings of this profile. If you want to delete a profile that you no longer use, select it and click [Remove](#).

3.3.3. Advanced



Select wireless configuration tool: In Windows XP, you can either use TP-LINK Utility or Windows wireless configuration tool. While in other operating systems, since you can use both TP-LINK Utility and Windows wireless configuration tool at the same time, this function is disabled.


Wireless network adapter switch: If you've installed several adapters in your computer, you can switch to another adapter among the drop-down list.

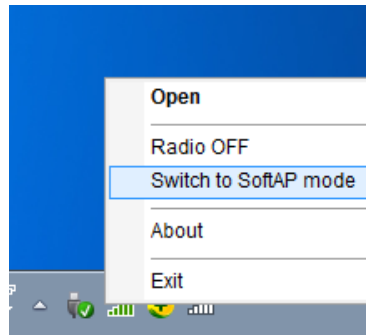
SoftAP mode: Once **ON** is selected, the adapter will work as an AP.

Power Save mode: Once **ON** is selected, the adapter will automatically reduce its power consumption when not being used.

3.3.4. SoftAP

SoftAP is short for Software enabled Access Point. When the adapter works in SoftAP mode, it allows the computer to create a wireless hotspot that other wireless devices nearby can use.

To switch to SoftAP mode, right-click the utility icon  on the task bar and select **Switch to SoftAP mode**.



After switching to SoftAP mode, the SoftAP icon appears in the utility. Click the [SoftAP](#) tab, and complete the settings, then click [Apply](#) for the settings to take effect.



Soft AP mode: Select ON or OFF to enable or disable this function.

Internet Connecting Share(ICS): Select a network connection that can access to the Internet from the drop-down list. For example, if your computer is connecting to the Internet via an Ethernet cable, you should select the corresponding [Local Area Connection](#) so as to share the network with other wireless devices.

SSID: Set a name for the wireless network shared by your adapter. The default is SoftAP.

Security Type: The security type here is set to be WPA2-PSK which is based on 802.11i and uses AES (Advanced Encryption Standard).


Encryption Type: The encryption type here is set to be AES.

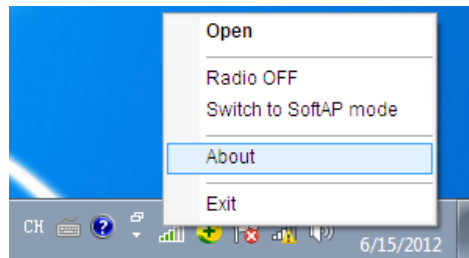
Security Key: Set a security key for the wireless network that shared by your adapter. It is recommended that you specify another key instead of the default key 12345678.

When another wireless device connects to the network shared by your adapter, it will be asked to enter the corresponding security key.

IP Address: Displays the IP address of the adapter when it works in SoftAP mode. You can also check if the network shared by your adapter is working properly by checking this IP Address. For example, if the IP Address is 0.0.0.0, it means that the Internet connection is failed.

3.3.5. About

You can view the adapter's information in the **About** screen, such as the UI version (Utility version) and the Driver version. Right-click  (TP-LINK Utility icon) on the task bar and select **About**, then the About screen displays.



3.4. Uninstall Driver and Utility

The software uninstallation steps vary a bit in different systems, please follow the appropriate instructions for your Windows operating system: [Windows 8/8.1/10](#), [Windows XP/7](#).

• Windows 8/8.1/10

Uninstall driver:

Go to **Start > Apps**, find the TP-LINK application. Click **Uninstall - TP-LINK TL-WN821N Driver**, then follow the on-screen instructions to complete the uninstallation.

Uninstall utility:

Go to **Start > Apps**, and find the TP-LINK application. Click **Uninstall - TP-LINK Wireless Configuration Utility**, then follow the on-screen instructions to complete the uninstallation.

• Windows XP/7

Uninstall driver:

Go to **Start > All Programs > TP-LINK > Uninstall - TP-LINK TL-WN821N Driver**. Follow the on-screen instructions to complete the uninstallation.

Uninstall utility:

Go to [Start](#) > [All Programs](#) > [TP-LINK](#) > [Uninstall - TP-LINK Wireless Configuration Utility](#).
Follow the on-screen instructions to complete the uninstallation.

Chapter 4

Mac OS X

This chapter introduces how to install your adapter's driver and utility, use your adapter to join a wireless network, manage your adapter, and uninstall your adapter in Mac OS X.

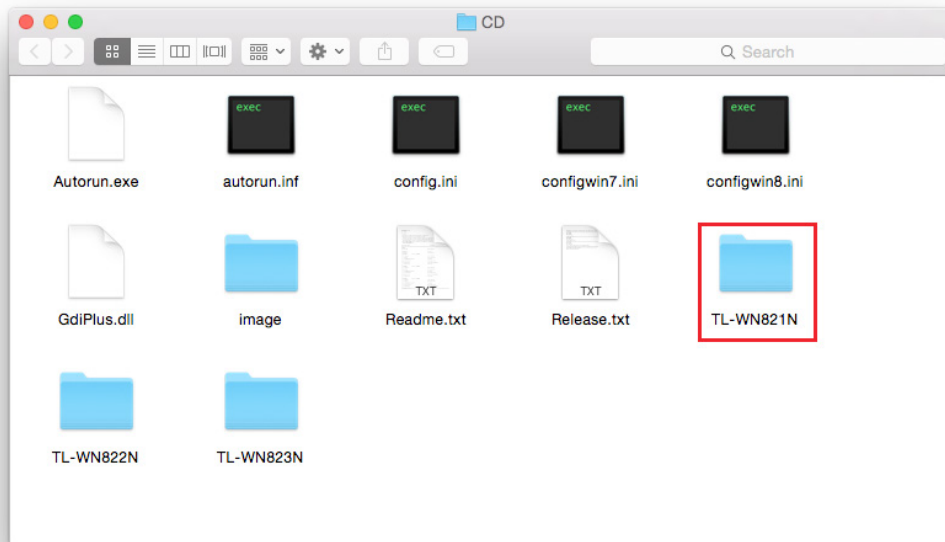
This chapter includes the following sections:

- *Install Driver and Utility*
- *Join a Wireless Network*
- *Management*
- *Uninstall Driver and Utility*

4.1. Install Driver and Utility

We take the steps in Mac OS X 10.10 as an example - the steps may vary slightly for other versions of Mac OS.

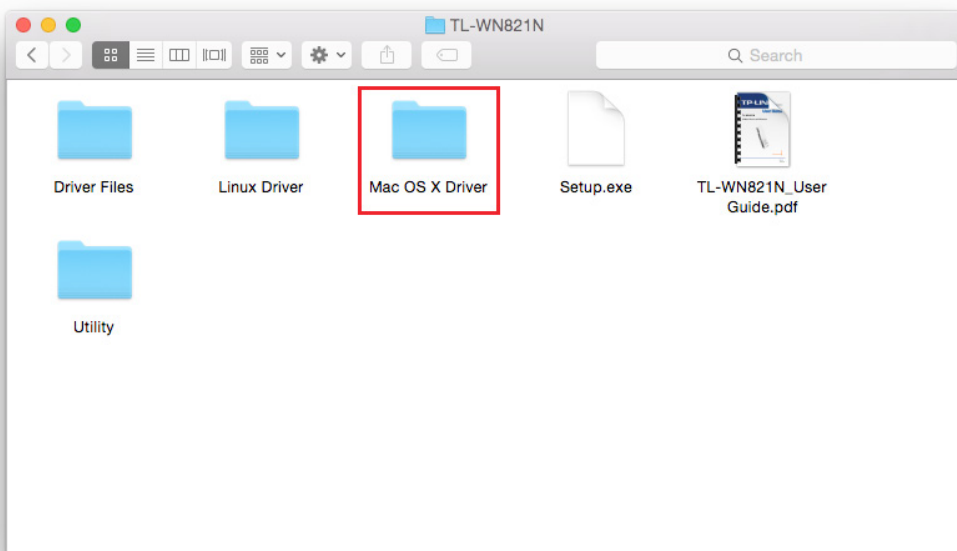
1. Insert the CD and run it manually. Open the **TL-WN821N** folder.



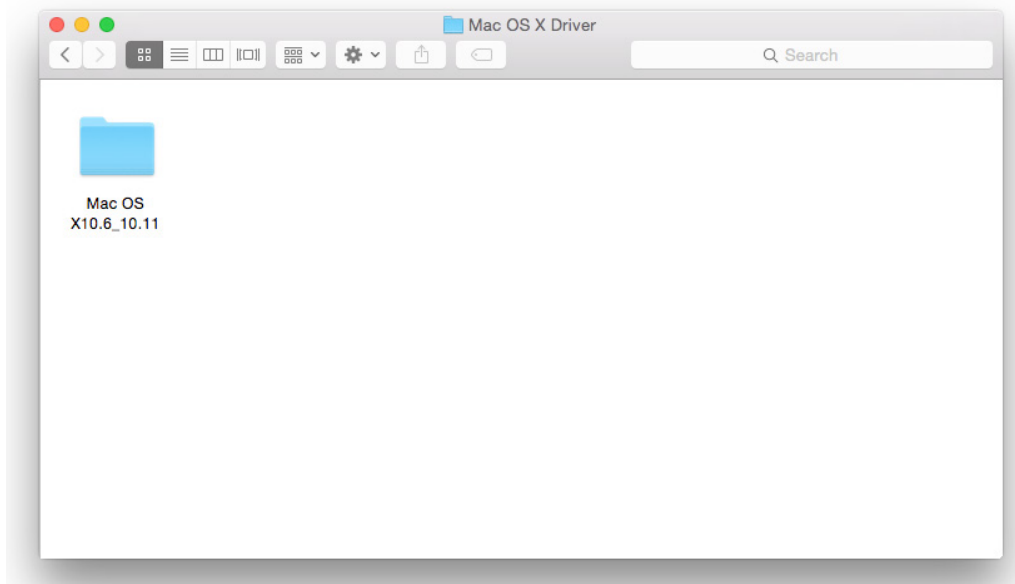
Note:

The CD is included in the package. If your CD does not work or your computer doesn't support the CD, you can also download the driver and utility from the TP-LINK website (<http://www.tp-link.com>).

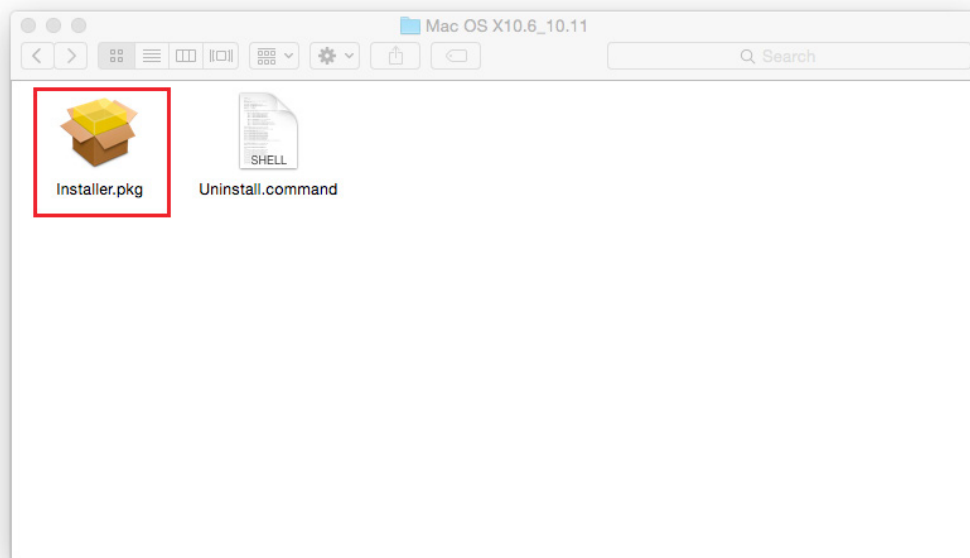
2. Open the **Mac OS X Driver** folder.



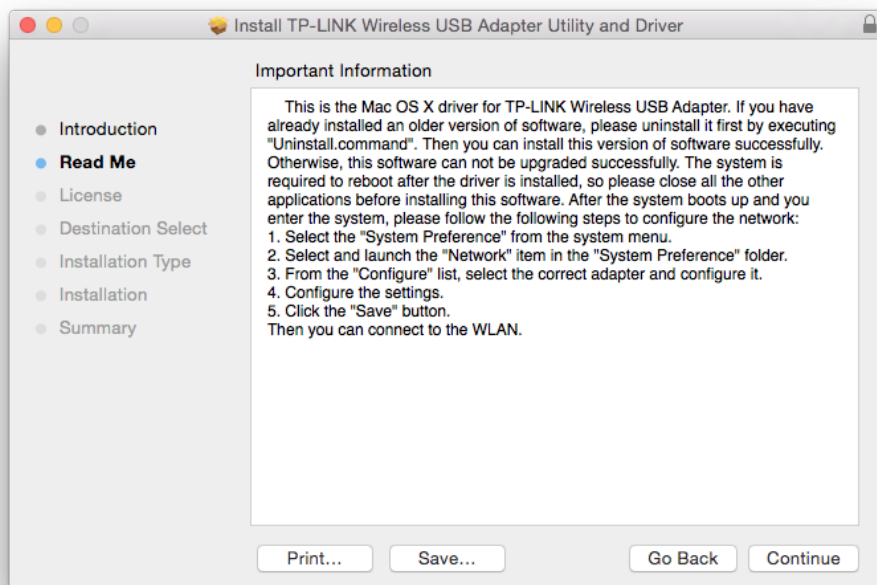
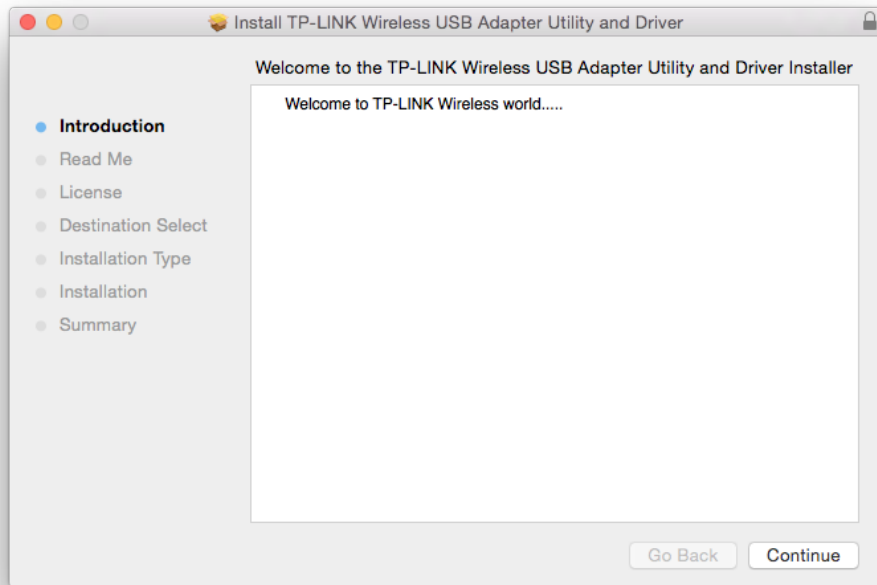
3. Double-click to unzip the [Mac OS X version.zip](#) file according to your computer's operating system. It will be unzipped into the [Mac OS X Driver](#) folder automatically.

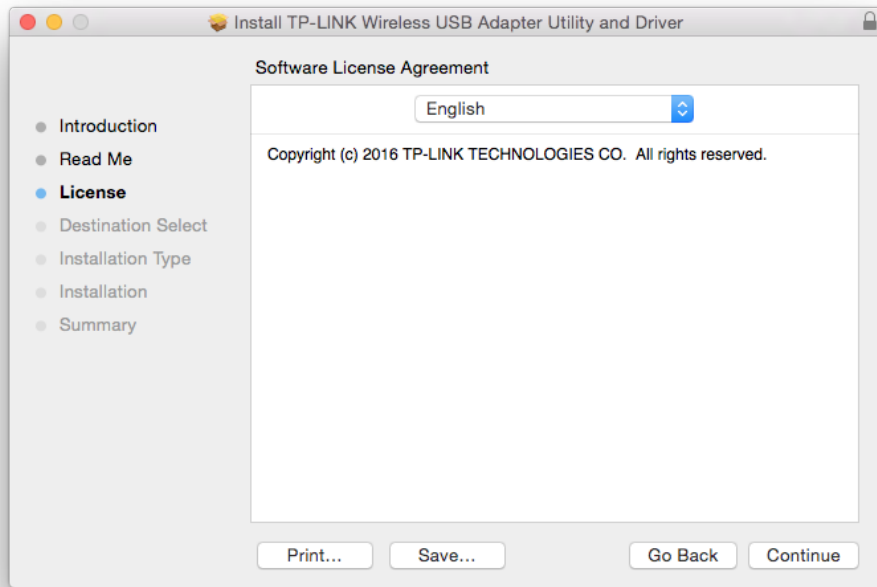


4. Open the corresponding Mac OS X version folder, double click the [Installer.pkg](#) file to open the installation wizard.

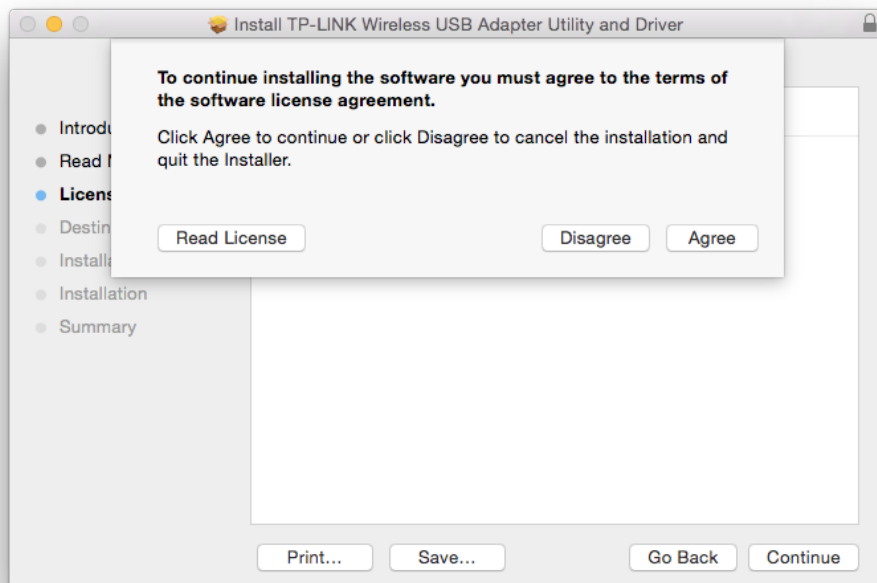


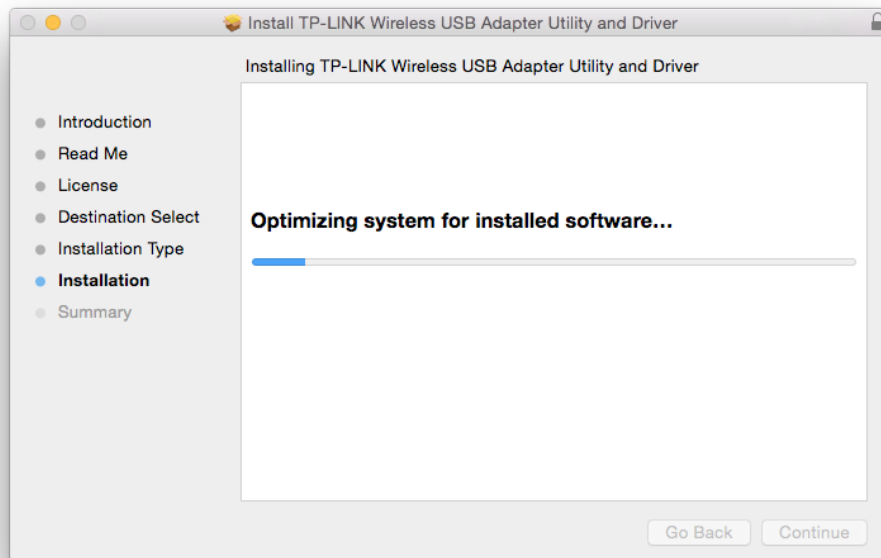
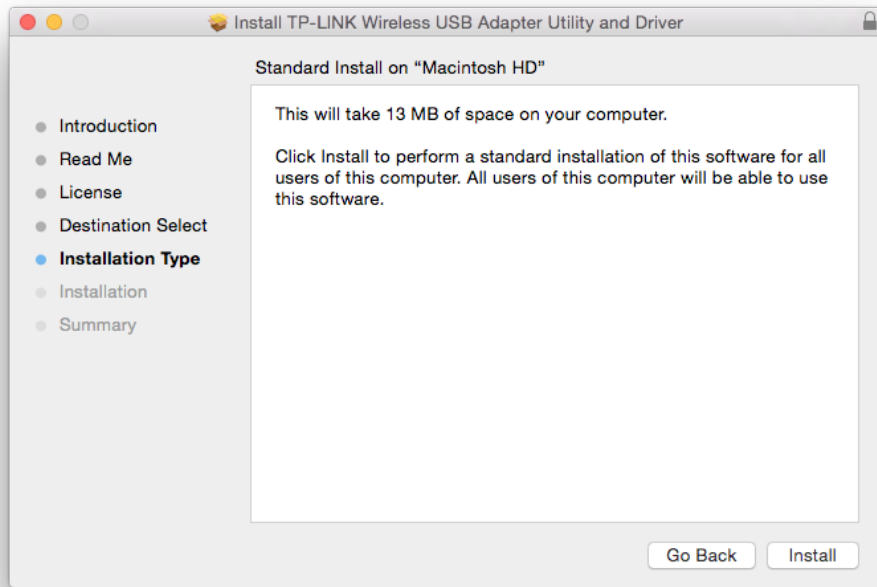
5. The [Install TP-LINK Wireless USB Adapter Utility and Driver Wizard](#) window will appear. Click [Continue](#) and follow the wizard to continue the installation.

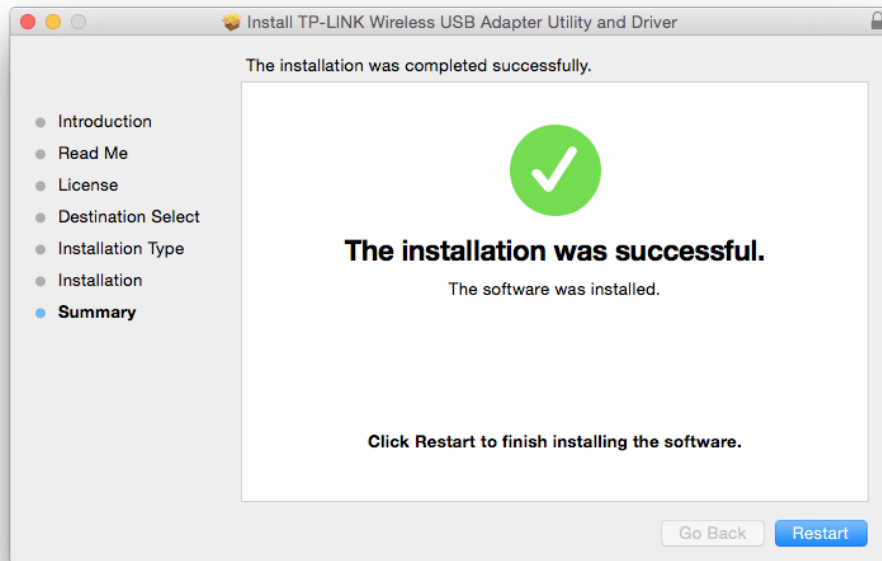



**Note:**

The language of this utility is in accordance with the language of your computer by default, and any change of it is invalid.








6. After restarting the computer, the TP-LINK Utility icon  will appear on the menu bar in the upper-right corner of the screen. To use the utility to join a Wi-Fi network with your adapter, refer to [Join a Wireless Network](#).

Note:

If the TP-LINK Utility icon  does not appear on the menu bar, make sure the USB wireless network adapter is connected properly and its LED is on.

4.2. Join a Wireless Network

There are two options of using the adapter to join a Wi-Fi network.

Option 1: [TP-LINK Utility](#)


TP-LINK Utility lets you easily connect the adapter to a Wi-Fi network and manage the adapter.

Option 2: [WPS \(Wi-Fi Protected Setup\)](#)

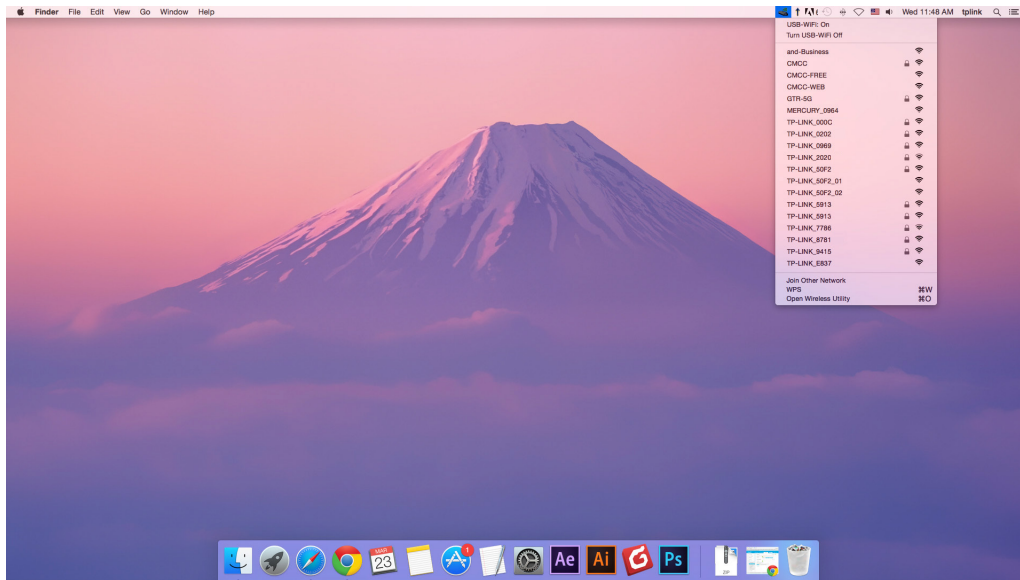
WPS (Wi-Fi Protected Setup) is a network security standard for easily adding computers and other devices to a home network. Use this method if your wireless router or access point supports WPS.

4.2.1. TP-LINK Utility


Option 1

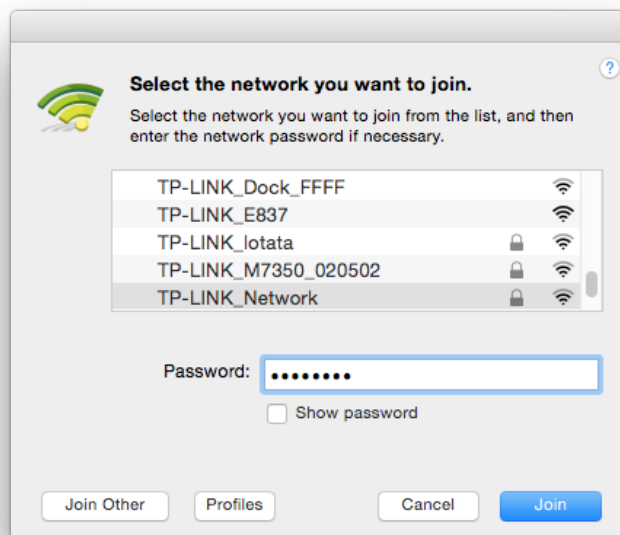
Click the TP-LINK Utility icon  on the menu bar, and choose a Wi-Fi network from it. Enter the network password when prompted.

When you are connected to the Internet, the network icon will change to .



Option 2

1. Click the TP-LINK Utility icon  on the menu bar, and then click [Open Wireless Utility](#) at the bottom of the network list.
2. Select the network you want to join from the list and enter the network password when prompted. Click [Join](#).



Note:

If your Wi-Fi network is not displayed in the list, you can try to join it by WPS or by clicking [Join Other](#) on the above screen, and then follow the on-screen instructions to join the network.

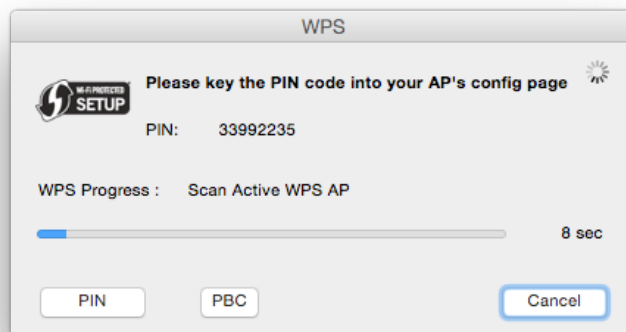
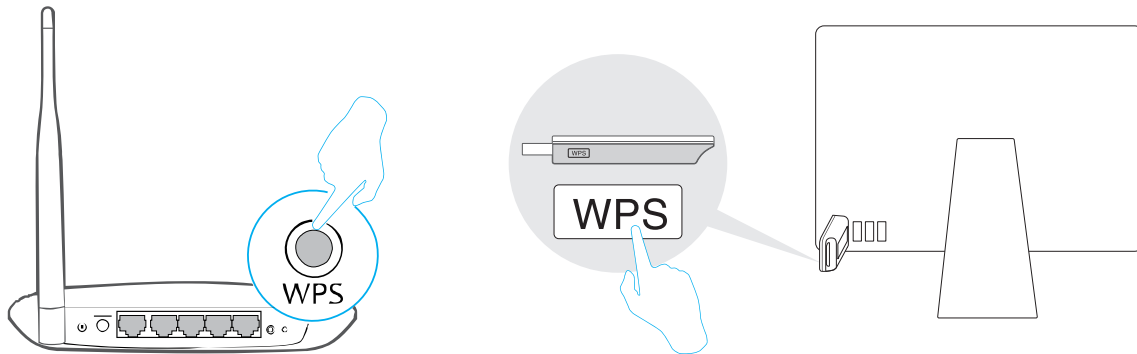
4.2.2. WPS (Wi-Fi Protected Setup)

WPS can be activated via PBC (Push Button Configuration) and PIN code. Please refer to [PBC](#) or [PIN](#) below.

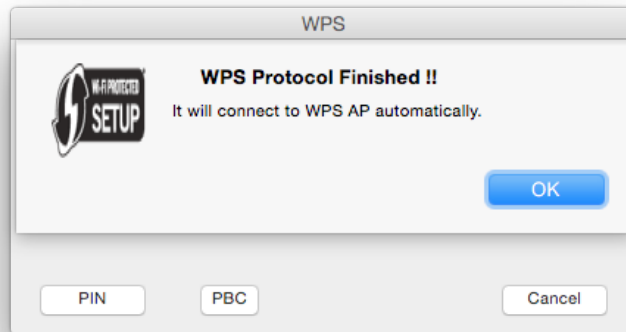
- PBC

Option 1

1. Press the WPS/QSS button on your router or AP. Within 2 minutes, press and hold the WPS button on the adapter until the following screen appears.

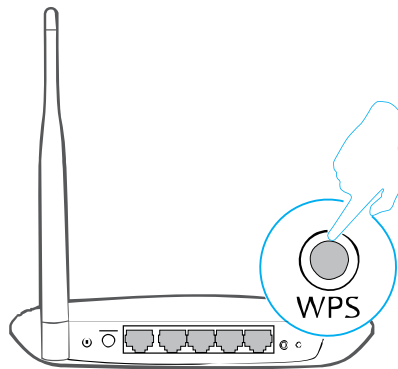



2. The following screen indicates a successful connection by WPS. Click [OK](#).

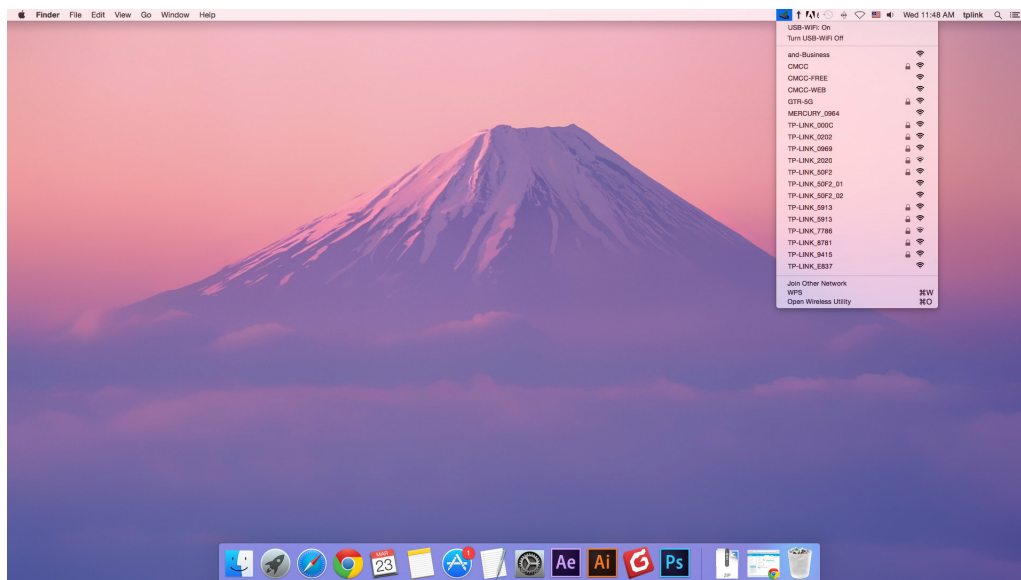


Option 2

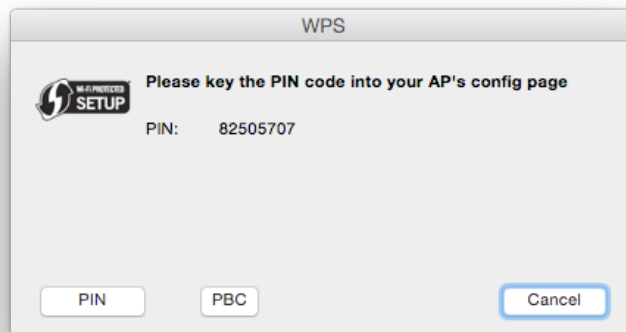
1. Press the WPS/QSS button on your router or AP.



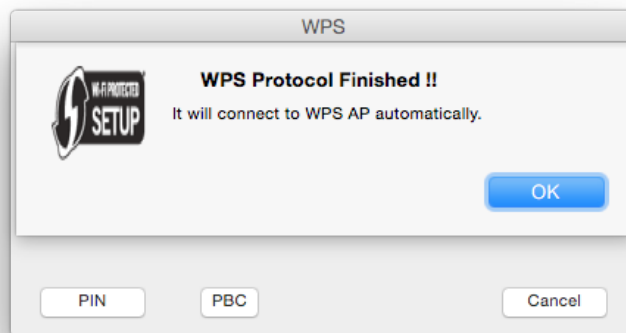
2. Within 2 minutes, click the TP-LINK Utility icon  on the menu bar, and then click **WPS** at the bottom of the network list.




3. Click [PBC](#).

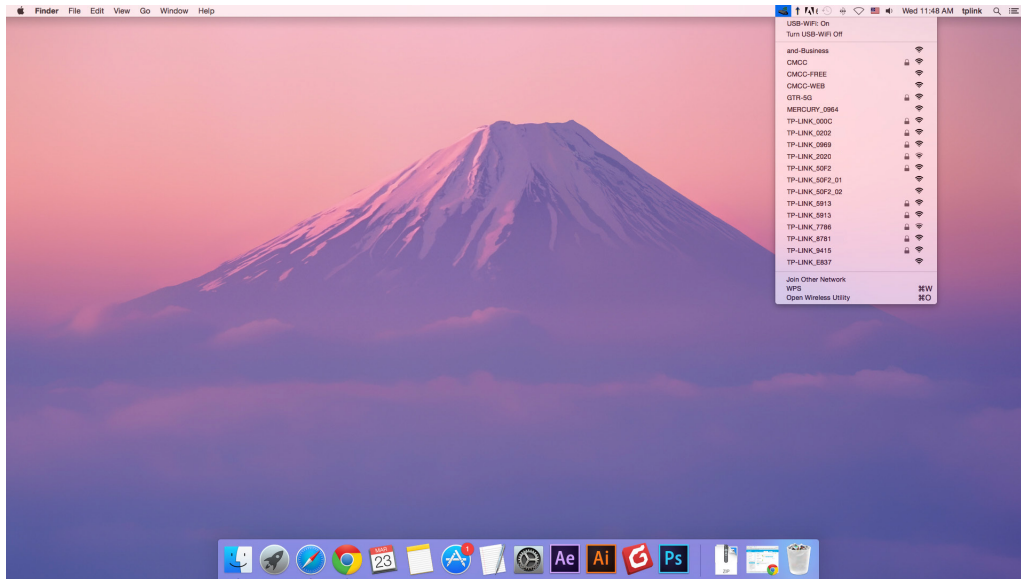


4. The following screen indicates a successful connection by WPS. Click [OK](#).

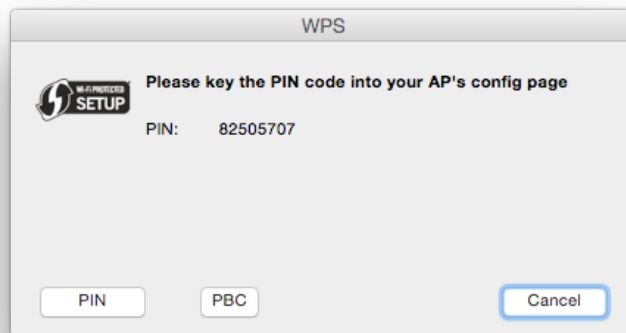


- **PIN**

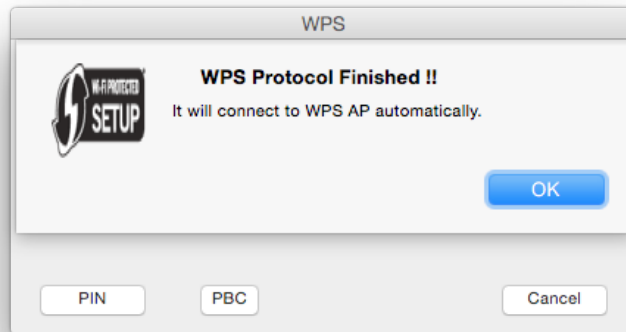
1. Click the TP-LINK Utility icon  on the menu bar, and then click [WPS](#) at the bottom of the network list.



2. Click **PIN**.




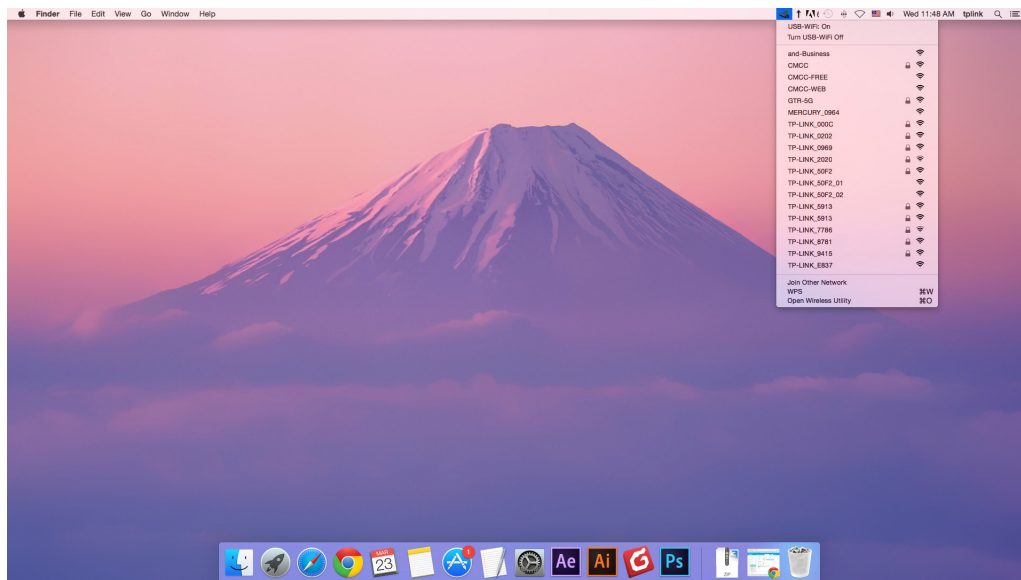
3. Within 2 minutes, log in to the Web Management page of your router or AP. Go to its **WPS** page, enter the PIN of the adapter in the corresponding field and click **Connect**.
4. The following screen indicates a successful connection by WPS. Click **OK**.



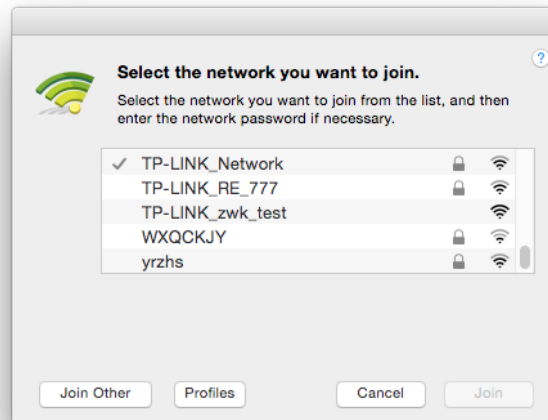
4.3. Management

TP-LINK Utility provides you with an easy way to manage various connection settings of your Wi-Fi network.

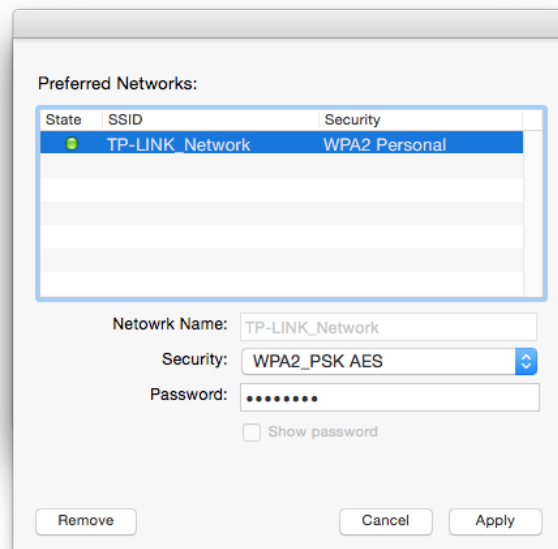
1. Click the TP-LINK Utility icon  on the menu bar, and then click [Open Wireless Utility](#) at the bottom of the network list.



2. TP-LINK Utility will pop up. Click the [Profiles](#) button to open the Profiles screen.



3. The [Profiles](#) screen lets you manage different Wi-Fi connection settings as profiles so that you can connect to your network easily.



[Preferred Networks](#) displays the networks that you once connected to. The networks' status and information are displayed on the table.

- To join a Wi-Fi network

If you want to join a Wi-Fi network that is listed on the profile screen, select the profile and click [Apply](#) in the bottom right corner.

- To manage an existing profile

If you want to change the wireless settings of an existing profile, select it, and then you can edit its [Security](#) and [Password](#). If you want to delete a profile, select it and click [Remove](#).

4.4. Uninstall Driver and Utility

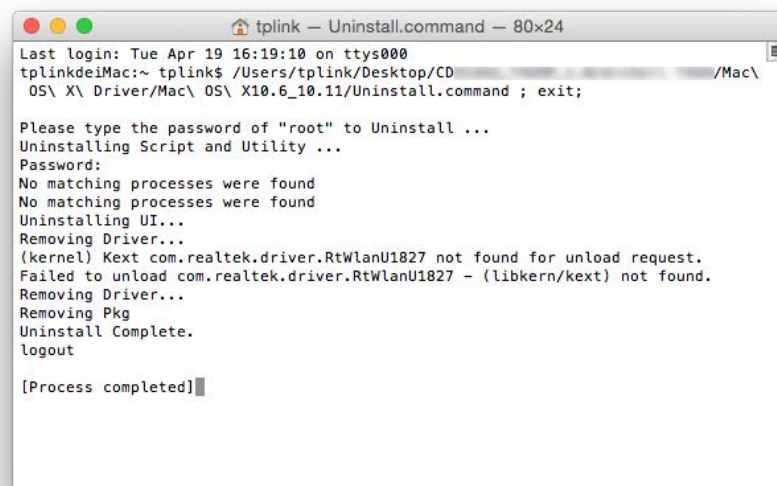
1. Insert the CD and run it manually.
2. Go to [TL-WN821N](#) > [Mac OS X Driver](#) > [Mac OS X version.zip](#) > [Uninstall.command](#).
3. As shown in the figure below, a command window will pop up. Please type the password of the root user to uninstall the software.



```
tplink — Uninstall.command — sudo — 80x24
Last login: Tue Apr 19 16:15:08 on console
tplinkdeMac:~ tplink$ /Users/tplink/Desktop/CD [redacted] /Mac\
OS\ X\ Driver\Mac\ OS\ X10.6_10.11\Uninstall.command ; exit;

Please type the password of "root" to Uninstall ...
Uninstalling Script and Utility ...
Password:█
```

4. Wait till the “[Process completed](#)” shows up, then restart your computer to finish the uninstallation.



```
tplink — Uninstall.command — 80x24
Last login: Tue Apr 19 16:19:10 on ttys000
tplinkdeMac:~ tplink$ /Users/tplink/Desktop/CD [redacted] /Mac\
OS\ X\ Driver\Mac\ OS\ X10.6_10.11\Uninstall.command ; exit;

Please type the password of "root" to Uninstall ...
Uninstalling Script and Utility ...
Password:
No matching processes were found
No matching processes were found
Uninstalling UI...
Removing Driver...
(kernel) Kext com.realtek.driver.RtWlanU1827 not found for unload request.
Failed to unload com.realtek.driver.RtWlanU1827 - (libkern/kext) not found.
Removing Driver...
Removing Pkg
Uninstall Complete.
logout

[Process completed]█
```

Chapter 5

Linux

Visit the TP-LINK website at <http://www.tp-link.com>, and go to TL-WN821N's product page. Then find the compatible version of driver in the support page. Download and install the driver on your computer.

COPYRIGHT & TRADEMARKS

Specifications are subject to change without notice. **TP-LINK** is a registered trademark of TP-LINK TECHNOLOGIES CO., LTD. Other brands and product names are trademarks or registered trademarks of their respective holders.

No part of the specifications may be reproduced in any form or by any means or used to make any derivative such as translation, transformation, or adaptation without permission from TP-LINK TECHNOLOGIES CO., LTD. Copyright © 2016 TP-LINK TECHNOLOGIES CO., LTD. All rights reserved.

FCC STATEMENT



This equipment has been tested and found to comply with the limits for a Class B digital device, pursuant to part 15 of the FCC Rules. These limits are designed to provide reasonable protection against harmful interference in a residential installation. This equipment generates, uses and can radiate radio frequency energy and, if not installed and used in accordance with the instructions, may cause harmful interference to radio communications. However, there is no guarantee that interference will not occur in a particular installation. If this equipment does cause harmful interference to radio or television reception, which can be determined by turning the equipment off and on, the user is encouraged to try to correct the interference by one or more of the following measures:

- Reorient or relocate the receiving antenna.
- Increase the separation between the equipment and receiver.
- Connect the equipment into an outlet on a circuit different from that to which the receiver is connected.
- Consult the dealer or an experienced radio/ TV technician for help.

This device complies with part 15 of the FCC Rules. Operation is subject to the following two conditions:

- 1) This device may not cause harmful interference.
- 2) This device must accept any interference received, including interference that may cause undesired operation.

Any changes or modifications not expressly approved by the party responsible for compliance could void the user's authority to operate the equipment.

Note: The manufacturer is not responsible for any radio or TV interference caused by unauthorized modifications to this equipment. Such modifications could void the user's authority to operate the equipment.

FCC RF Radiation Exposure Statement:

This equipment complies with FCC radiation exposure limits set forth for an uncontrolled environment. End users must follow the specific operating instructions for satisfying RF exposure compliance. This transmitter must not be co-located or operating in conjunction with any other antenna or transmitter. This equipment has been SAR-evaluated for use in hand. SAR measurements are based on a 5mm spacing from the body and that compliance is achieved at that distance.

CE Mark Warning



RF Exposure Information

This device meets the EU requirements (1999/5/EC Article 3.1a) on the limitation of exposure of the general public to electromagnetic fields by way of health protection.

This device has been tested and meets the ICNIRP exposure guidelines and the European Standard EN 62209-2. SAR is measured with this device at a separation of 0.5 cm to the body, while transmitting at the highest certified output power level in all frequency bands of this device. Carry this device at least 0.5 cm away from your body to ensure exposure levels remain at or below the as-tested levels.

Canadian Compliance Statement

This device complies with Industry Canada license-exempt RSSs. Operation is subject to the following two conditions:

- 1) This device may not cause interference, and
- 2) This device must accept any interference, including interference that may cause undesired operation of the device.

Le présent appareil est conforme aux CNR d'Industrie Canada applicables aux appareils radio exempts de licence. L'exploitation est autorisée aux deux conditions suivantes :

- 1) l'appareil ne doit pas produire de brouillage;
- 2) l'utilisateur de l'appareil doit accepter tout brouillage radioélectrique subi, même si le brouillage est susceptible d'en compromettre le fonctionnement.

Radiation Exposure Statement:

This equipment complies with IC radiation exposure limits set forth for an uncontrolled environment. This equipment should be installed and operated with minimum distance 20cm between the radiator & your body.

Déclaration d'exposition aux radiations:

Cet équipement est conforme aux limites d'exposition aux rayonnements IC établies pour un environnement non contrôlé. Cet équipement doit être installé et utilisé avec un minimum de 20 cm de distance entre la source de rayonnement et votre corps.

Industry Canada Statement

CAN ICES-3 (B)/NMB-3(B)

Korea Warning Statements

당해 무선설비는 운용중 전파혼신 가능성이 있음.

NCC Notice

注意！

依據 低功率電波輻射性電機管理辦法

第十二條 經型式認證合格之低功率射頻電機，非經許可，公司、商號或使用者均不得擅自變更頻率、加大功率或變更原設計之特性或功能。

第十四條 低功率射頻電機之使用不得影響飛航安全及干擾合法通行；經發現有干擾現象時，應立即停用，並改善至無干擾時方得繼續使用。前項合法通信，指依電信規定作業之無線電信。低功率射頻電機需忍受合法通信或工業、科學以及醫療用電波輻射性電機設備之干擾。

BSMI Notice

安全諮詢及注意事項

- 請使用原裝電源供應器或只能按照本產品注明的電源類型使用本產品。
- 清潔本產品之前請先拔掉電源線。請勿使用液體、噴霧清潔劑或濕布進行清潔。
- 注意防潮，請勿將水或其他液體潑灑到本產品上。
- 插槽與開口供通風使用，以確保本產品的操作可靠並防止過熱，請勿堵塞或覆蓋開口。
- 請勿將本產品置放於靠近熱源的地方。除非有正常的通風，否則不可放在密閉位置中。
- 請不要私自打開機殼，不要嘗試自行維修本產品，請由授權的專業人士進行此項工作。






Продукт сертифіковано згідно с правилами системи УкрСЕПРО на відповідність вимогам нормативних документів та вимогам, що передбачені чинними законодавчими актами України.



Safety Information

- When product has power button, the power button is one of the way to shut off the product; when there is no power button, the only way to completely shut off power is to disconnect the product or the power adapter from the power source.
- Don't disassemble the product, or make repairs yourself. You run the risk of electric shock and voiding the limited warranty. If you need service, please contact us.
- Avoid water and wet locations.

Explanation of the symbols on the product label

Symbol	Explanation
	DC voltage
 	<p>RECYCLING</p> <p>This product bears the selective sorting symbol for Waste electrical and electronic equipment (WEEE). This means that this product must be handled pursuant to European directive 2012/19/EU in order to be recycled or dismantled to minimize its impact on the environment.</p> <p>User has the choice to give his product to a competent recycling organization or to the retailer when he buys a new electrical or electronic equipment.</p>