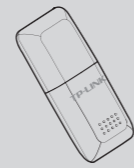


Quick Installation Guide

150Mbps Mini Wireless N USB Adapter

MODEL NO. TL-WN723N

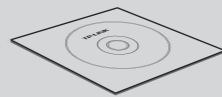
Package Contents



TL-WN723N



QIG

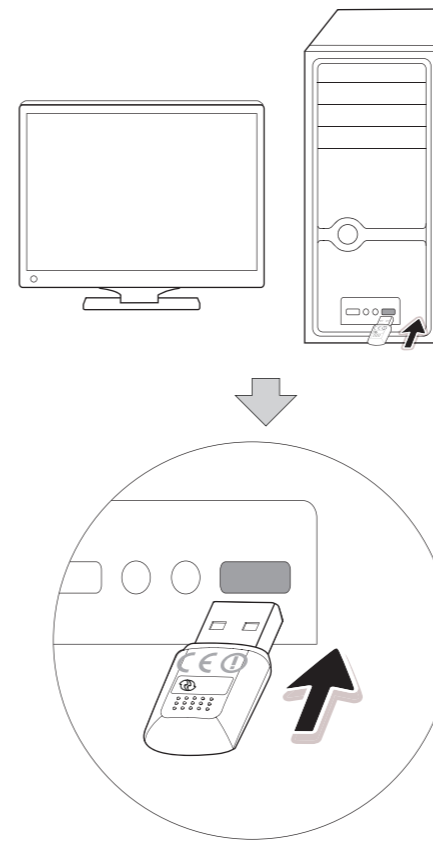


Resource CD

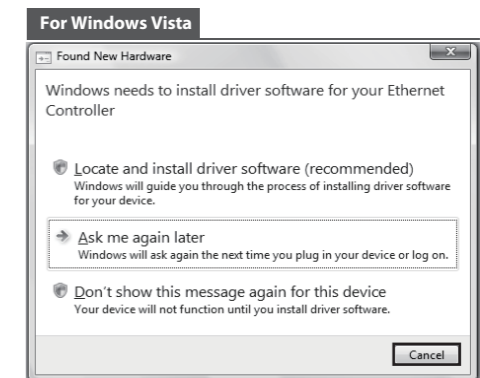
System Requirement

· Windows 7 · Windows Vista · Windows XP

1 Hardware Connection

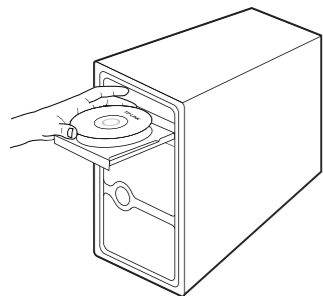


You may see the **Found New Hardware Wizard** after the adapter has been inserted. Please click **'Cancel'**.



2 Software Installation (The installation procedures in Windows 7/ Vista/ XP are similar. Here takes the procedures in Windows 7 for example.)

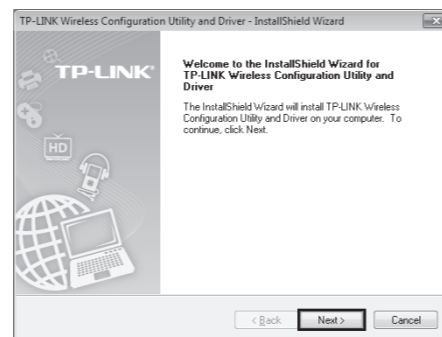
- 1 Insert the TP-LINK Resource CD into the CD-ROM drive.



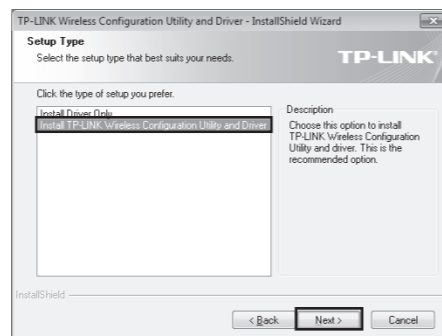
- 2 Find the appropriate model and choose **Install Driver&Utility**.



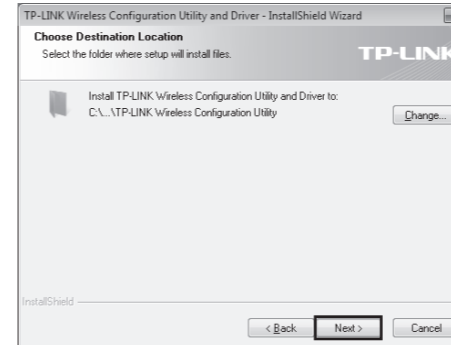
- 3 The **InstallShield Wizard** window will appear. Click **Next** to continue.



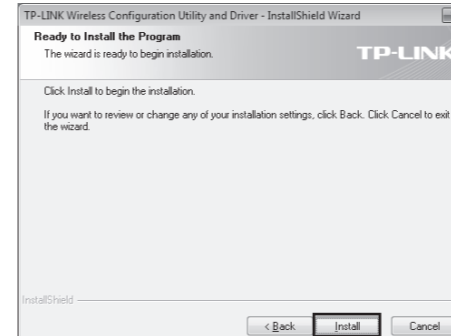
- 4 Select **Install TP-LINK Wireless Configuration Utility and Driver** and then click **Next**.



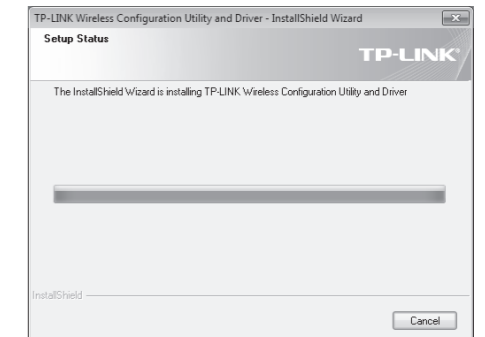
- 5 Click **Change** to specify the destination location or you can leave it default. Click **Next** to continue.



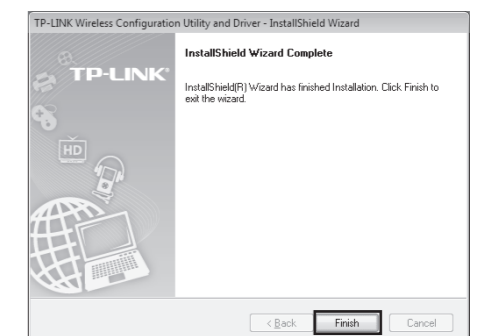
- 6 Click **Install** to install the driver and utility for your adapter.



- 7 The installation of the driver and utility may take 1~2 minutes.

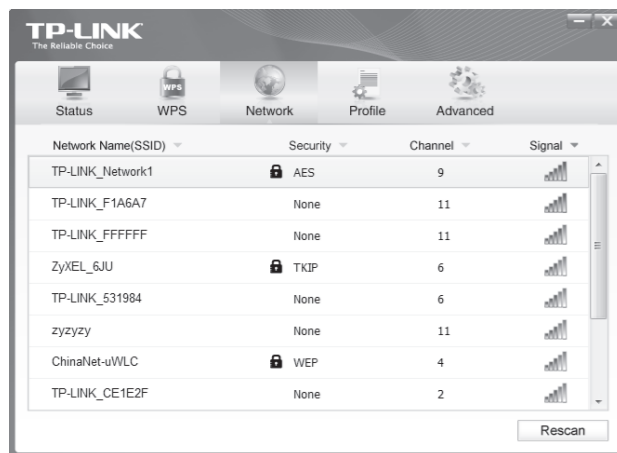


- 8 The following screen will then appear. Click **Finish** to complete the setup.

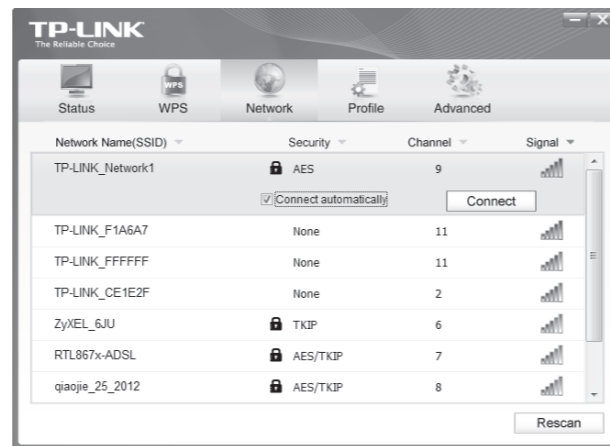


3 Connect to network (You can skip to **Appendix: Connect to Wireless Router by WPS** to quickly connect to a network if your router or access point features WPS or QSS function.)

1 After installation, the configuration page will pop up on your desktop.



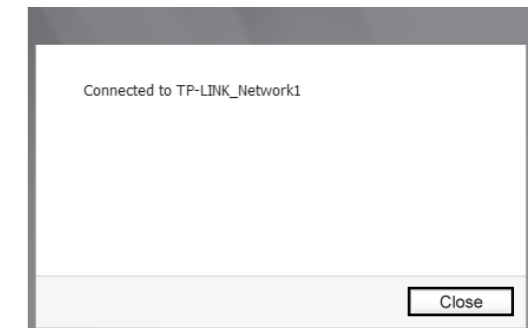
2 Click **Network** in the tools section to display a list of available wireless networks. Highlight the target network name (e.g. TP-LINK_Network1) and then click **Connect** to build a connection.



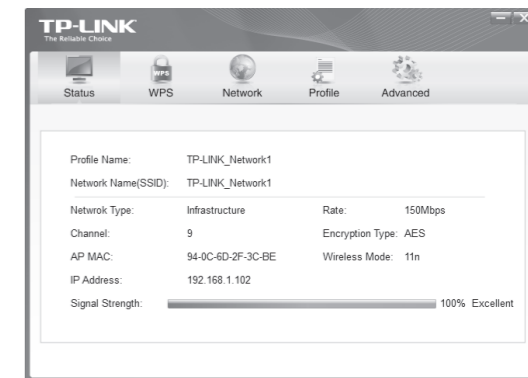
3 If the network is unsecured, you will directly connect to it. If it is security-enabled, you can input the security key into the field beside **Security Key** and then click **OK** to continue.



4 The following screen indicates successful connectivity. Click **Close** to enjoy the Internet.



5 To view more information about the network connected, click **Status** in the tools section.



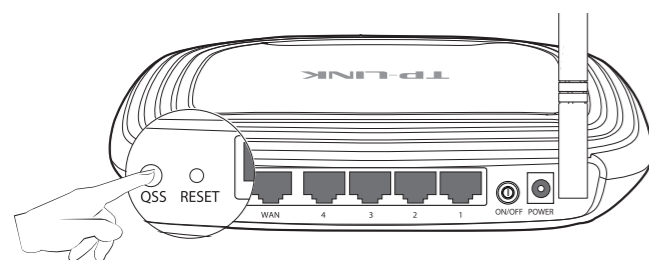
Note The icon will appear on your desktop. Double-clicking on the icon can start the utility.

Note Without entering a key, you can press the WPS button (also called QSS) on your router if the prompt **You can also connect by pushing the button on the router** appears.

Appendix: Connect to Wireless Router by WPS

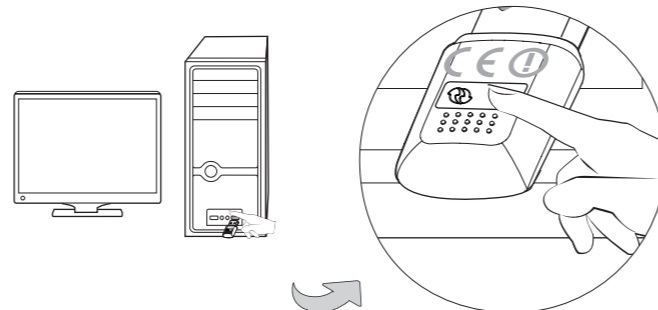
If your wireless router features the WPS function (also called QSS), you can also set up a wireless connection in this way.

1 Push the QSS button (also called WPS) on the back panel of the Router. Here takes router TL-WR741ND for example.

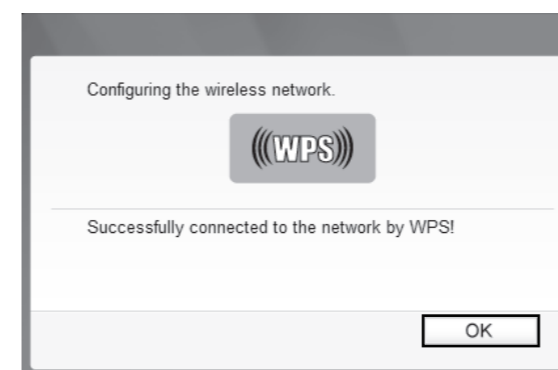


TL-WR741ND

2 Push the **WPS button** marked with on the Adapter.



3 Wait for a while until the following screen appears. Click **OK** to finish the WPS connection.



Note For detailed instructions of WPS, please refer to the User Guide on the resource CD.

Technical Support

- For more troubleshooting help, go to www.tp-link.com/support/faq.asp
- To download the latest Firmware, Driver, Utility and User Guide, go to www.tp-link.com/support/download.asp
- For all other technical support, please contact us by using the following details:

Global

Tel: +86 755 26504400
 E-mail: support@tp-link.com
 Service time: 24hrs, 7 days a week

Singapore

Tel: +65 62840493
 E-mail: support.sg@tp-link.com
 Service time: 24hrs, 7 days a week

UK

Tel: +44 (0) 845 147 0017
 E-mail: support.uk@tp-link.com
 Service time: 24hrs, 7 days a week

USA/Canada

Toll Free: +1 866 225 8139
 E-mail: support.usa@tp-link.com
 Service time: 24hrs, 7 days a week

Malaysia

Tel: 1300 88 875465 (1300 88TPLINK)
 E-mail: support.my@tp-link.com
 Service time: 24 hrs a day, 7 days a week

Switzerland

Tel: +41 (0)848 800998
 (German service)
 E-mail: support.ch@tp-link.com
 Fee: 4-8 Rp/min, depending on rate of different time
 Service time: Monday to Friday 9:00 AM to 6:00 PM GMT+1 or GMT+2 (Daylight Saving Time)

Australia & New Zealand

Tel: AU 1300 87 5465
 NZ 0800 87 5465
 E-mail: support@tp-link.com.au
 Service time: 24hrs, 7 days a week

Turkey

Tel: 444 19 25 (Turkish Service)
 E-mail: support.tr@tp-link.com
 Service time: 9:00 AM to 6:00 PM, 7 days a week

Italy

Tel: +39 02 66987799
 E-mail: support.it@tp-link.com
 Service time: 9:00 AM to 6:00 PM, Monday to Friday

Indonesia

Tel: (+62) 021 6259 135
 E-mail: support.id@tp-link.com
 Service time: Monday to Friday 9:00 -12:00 ; 13:00 -18:00 *Except public holidays

Germany / Austria

Tel :+49 1805 875465 (German Service) / +49 1805 TPLINK
 E-mail: support.de@tp-link.com
 Fee: 0.14 EUR/min from the German fixed phone network and up to 0.42 EUR/min from mobile phone.
 Service Time: Monday to Friday 9:00 AM to 6:00 PM GMT+1 or GMT+2 (Daylight Saving Time in Germany) * Except bank holidays in Hesse