

TP-LINK®

User Guide

Surveillance Manager



Contents

Chapter 1	System Requirement.....	1
Chapter 2	Installation.....	2
2.1	Before Installing the Software	2
2.2	Starting the Installation.....	2
Chapter 3	Quick Start.....	5
3.1	Install IP Camera(s).....	5
3.2	Add IP Camera(s).....	5
3.3	Configuration of schedule recording.....	9
3.4	Playback.....	14
Chapter 4	Main-console.....	17
4.1	System status.....	17
4.2	Screen Division	19
4.3	Operation with sub-screen:	20
4.3.1	Define display camera(s) sequence	20
4.3.2	Digital Zoom at sub-screen	20
4.3.3	Switch to Full screen	20
4.3.4	Snapshot of sub-screen.....	21
4.3.5	Restore division default	21
4.4	System setup	21
4.4.1	System setup.....	22
4.4.2	Camera.....	24
4.4.3	User	27
4.4.4	Address Book	28
4.4.5	Notification.....	29
4.4.6	Muti-Monitor.....	31
4.4.7	Joystick.....	32
4.5	Alarm Setting.....	34
4.6	Server Setup	39
4.7	Log Viewer	40
4.8	Import / Export Setting	44
4.9	Schedule setup	44
4.9.1	Schedule Setup.....	44
4.9.2	Record Setup.....	47

4.10	Start & Stop Monitor	49
4.11	E-Map.....	50
4.12	Two way Audio	51
Chapter 5	Playback	53
5.1	Search history recorded file(s)	54
5.2	Playback control button(s).....	56
5.3	Convert to AVI file.....	57
5.4	Switch audio play mode	59
5.5	Playback setting	59
5.6	Snapshot dialog	59
5.7	Backup history file(s).....	61
5.8	Playback status	62
5.9	Operation with sub-screen	62
5.9.1	Define display camera(s) sequence	62
5.9.2	Digital Zoom at sub-screen	63
5.9.3	Switch to Full screen	63
5.9.4	Snapshot of sub-screen.....	63
5.9.5	Motion Search	64
5.9.6	Sequential Search	65

Chapter 1 System Requirement

FPS (QVGA)	~120	120~360	360~540	540~960	960~
CPU	Intel P4 2.4GHz	Intel P4 3.2GHz	Intel Pentium D 950 3.4GHZ	Intel core 2 Duo E8600 3.3GHZ	Intel core I7 2600K 3.8GHZ
RAM	512MB	512MB	1GB	2GB	4GB
Display	Support 1024x768 resolution or above Support DirectX 9.0c or above Intel 945G or Intel 965G or above				
OS	Windows XP · Vista*, Win 7 (32bits or 64bits)				
Hard disk	60GB				
Ethernet	100Mbps			1Gbps	
Chipset	Intel 945 or Intel 965 or above				

*If you install the Surveillance Manager with the Vista, you should install more physical memory into system.

QVGA = 320 x 240 pixel

CIF ≙ QVGA , D1 ≙ VGA at mapping table below.

Image resolution mapping table	
Resolution	Compared with QVGA
QQVGA	QQVGA = QVGA / 4
VGA	VGA = QVGA x 4
SXGA	SXGA = QVGA x 16
FULL HD	FHD = QVGA X 24

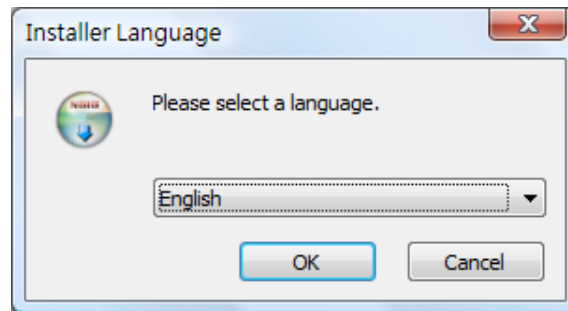
Chapter 2 Installation

2.1 Before Installing the Software

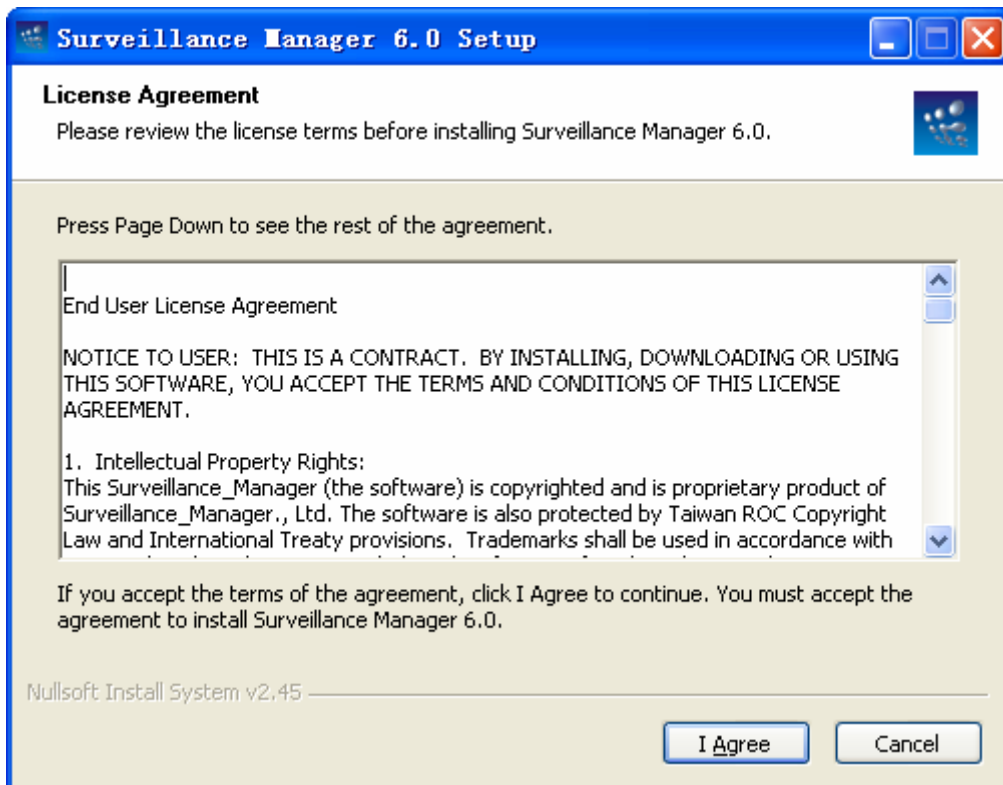
Run **Surveillance_Manager6_0_3_495.exe**, which is included on the Resource CD.

2.2 Starting the Installation

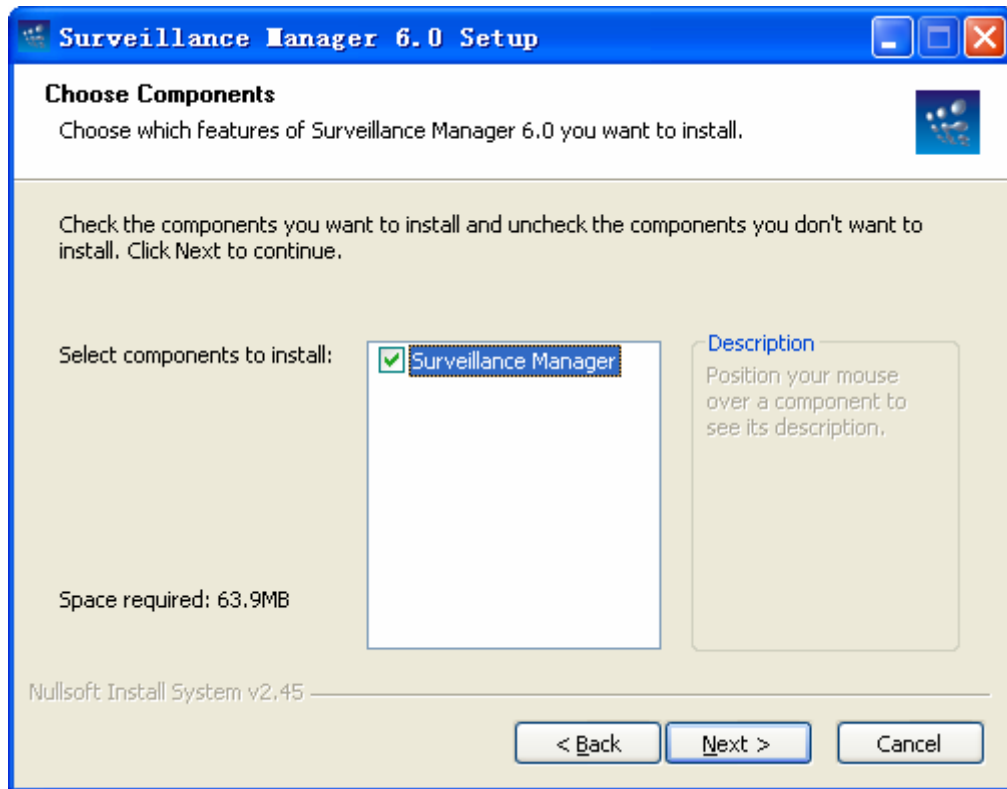
Step1: The **Installation Wizard** will start. Select your preferred language for the Surveillance Manager.



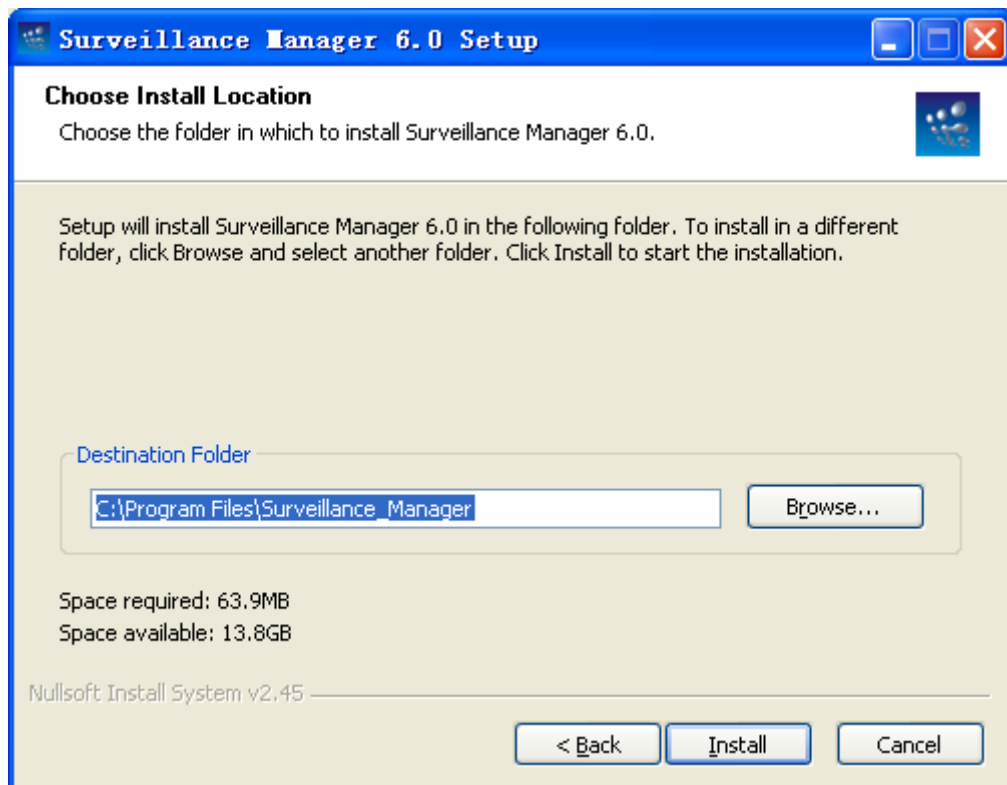
Step2: The **License Agreement** window will be listed as below. Click **I Agree** to continue if you want to install this software.



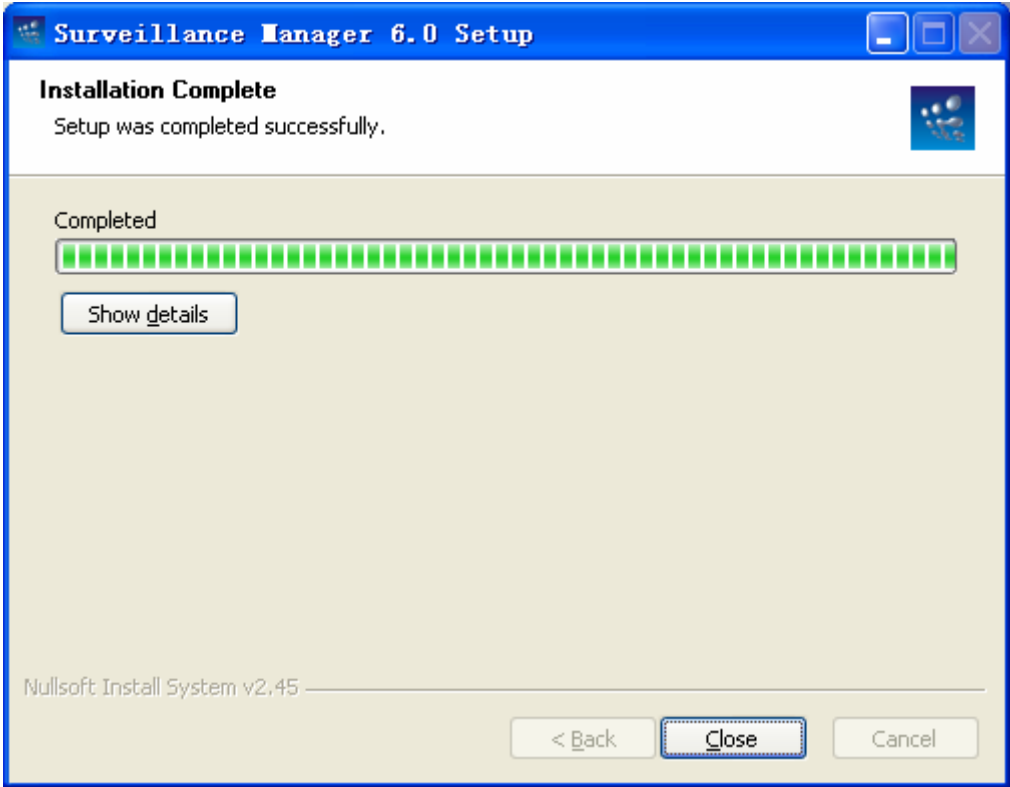
Step3: Select **Surveillance Manager**, then click **Next** button.



Step4: The **Choose Install Location** window will open. Select the folder which you wish to install **Surveillance Manager** to, and then click on **Install** button to continue.



Step5: The **Installation Complete** window will open next. Click on **Close** button to complete the installation.



Chapter 3 Quick Start

3.1 Install IP Camera(s)

Step1: Set up the IP camera(s) by following the instruction manual provided by the manufacturer.

Step2: Check the network between the IP camera(s) and the system.

Step3: Add the IP camera(s) to the system by following the steps below.

3.2 Add IP Camera(s)

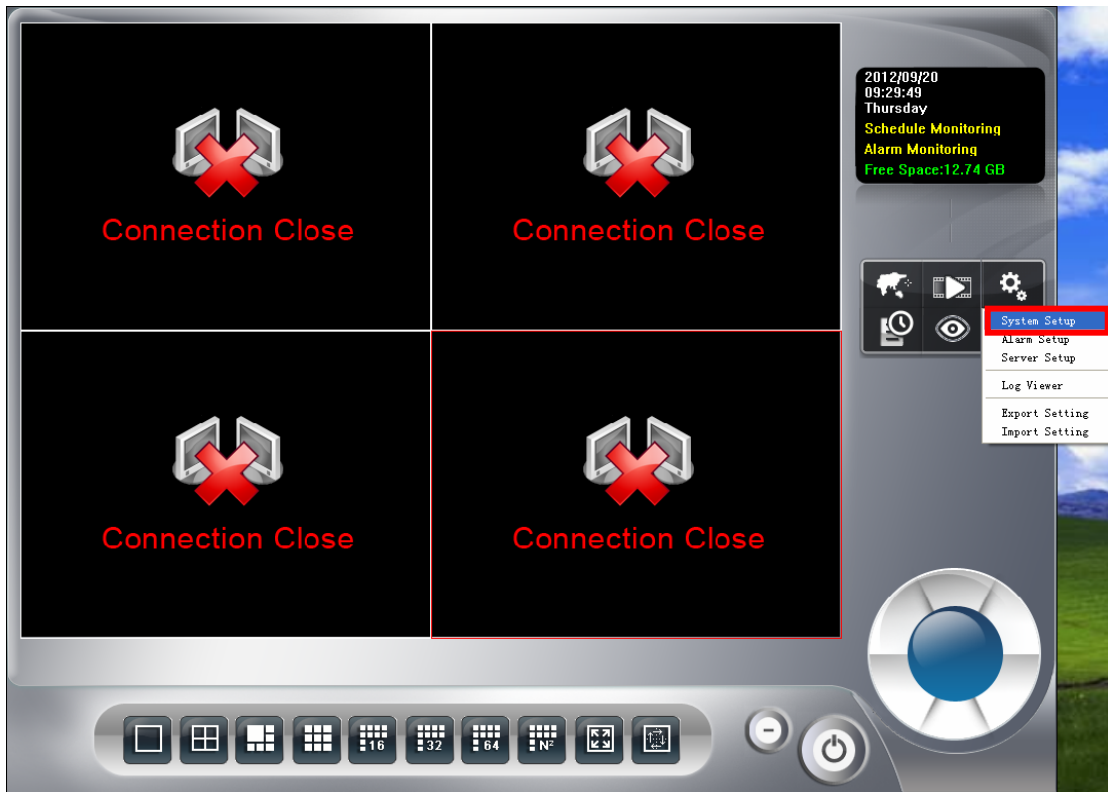
Step1: Click **Start** → **All Programs** → **Surveillance_Manager** → **Surveillance_Manager**.

Step2: Enter the user name and password to login **Surveillance Manager** (Both the default of user name and password are **admin**)

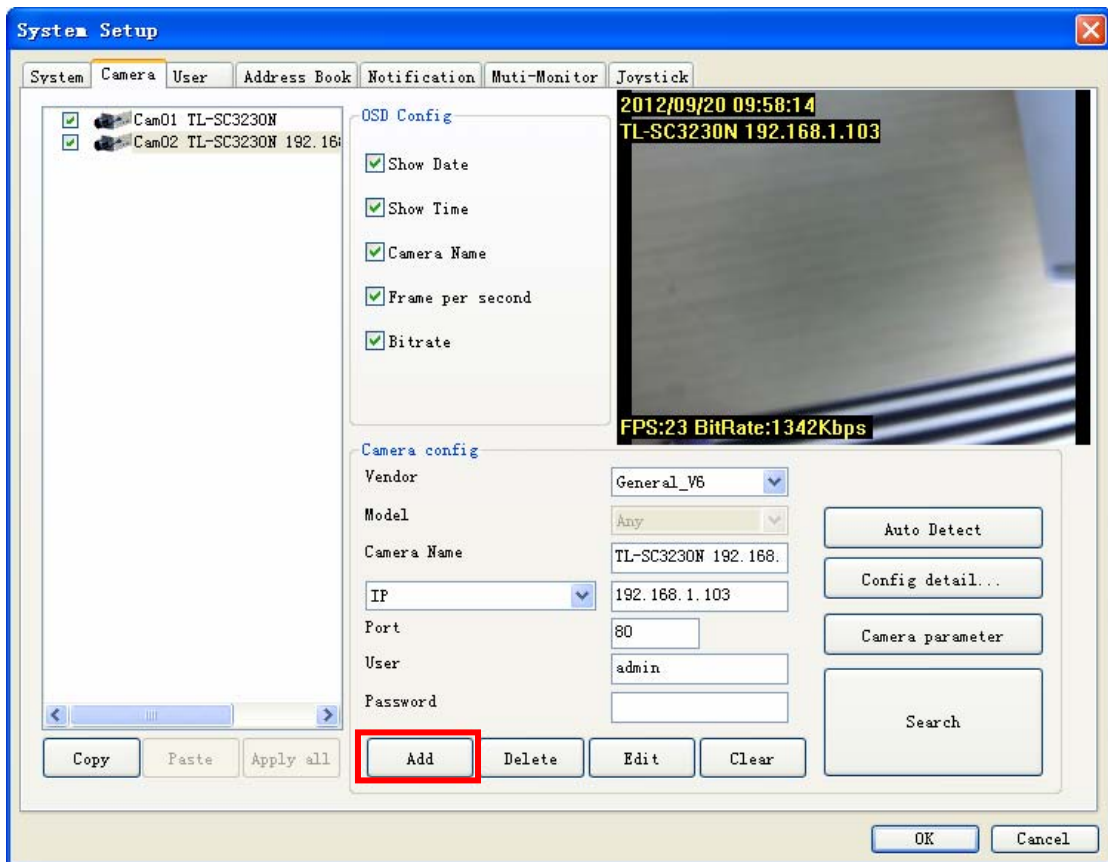


Check the **Remember User** to remember the account user name and password you enter this time.

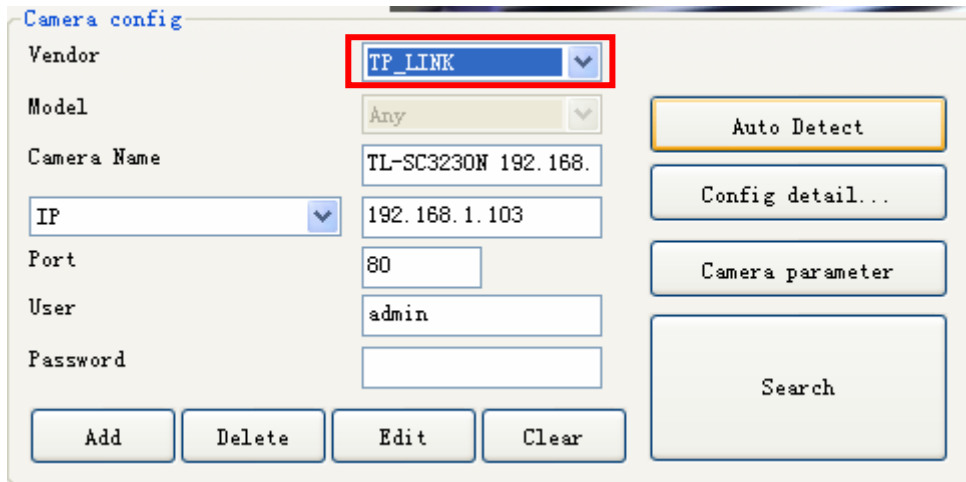
Step3: Click the system setup  icon and select **System setup**.



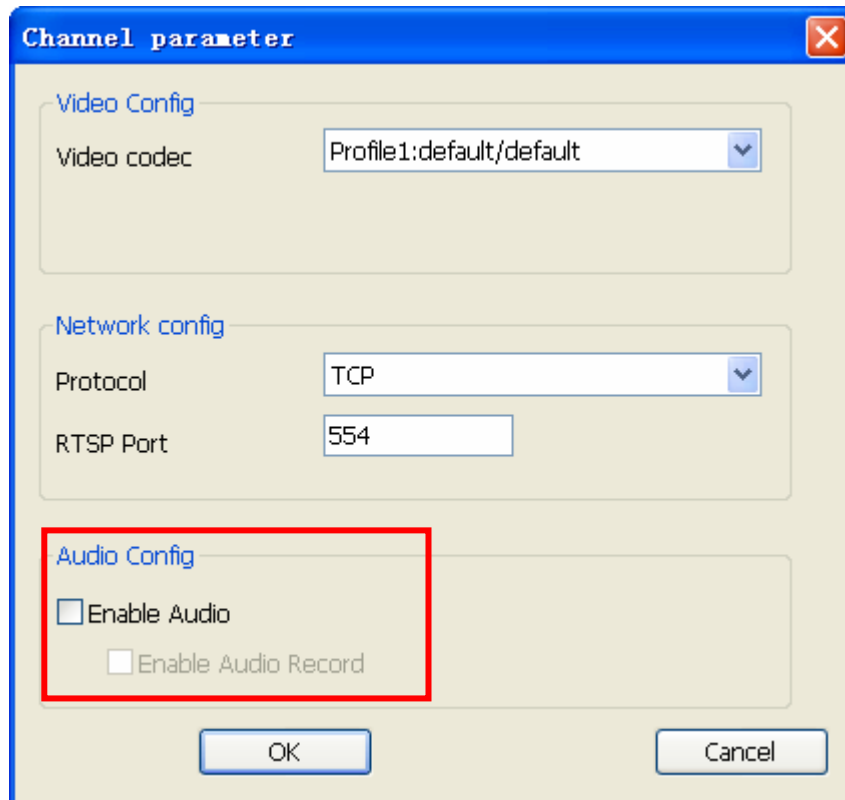
Step4: Select **“Camera”**, enter the camera’s configuration, and then click **Add**.



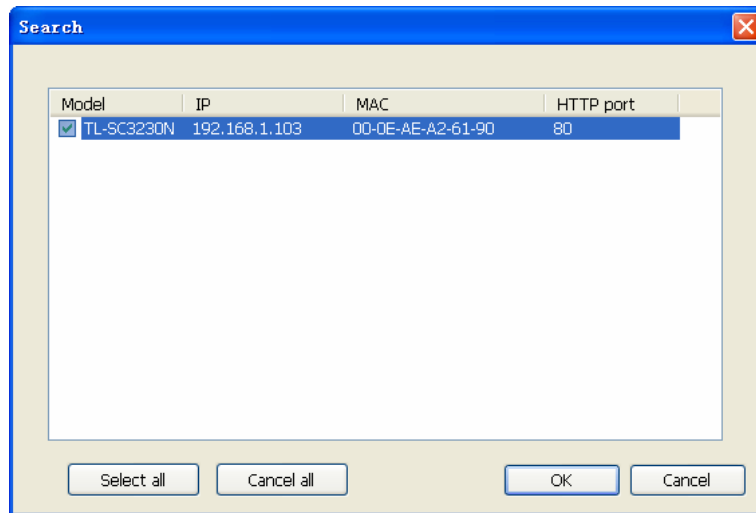
- **Auto Detect:** Click **Auto Detect** button to detect camera and the system will check and set model automatically. Please confirm the **Vendor** and **Model** setting is matched to the camera, or may cause malfunction.



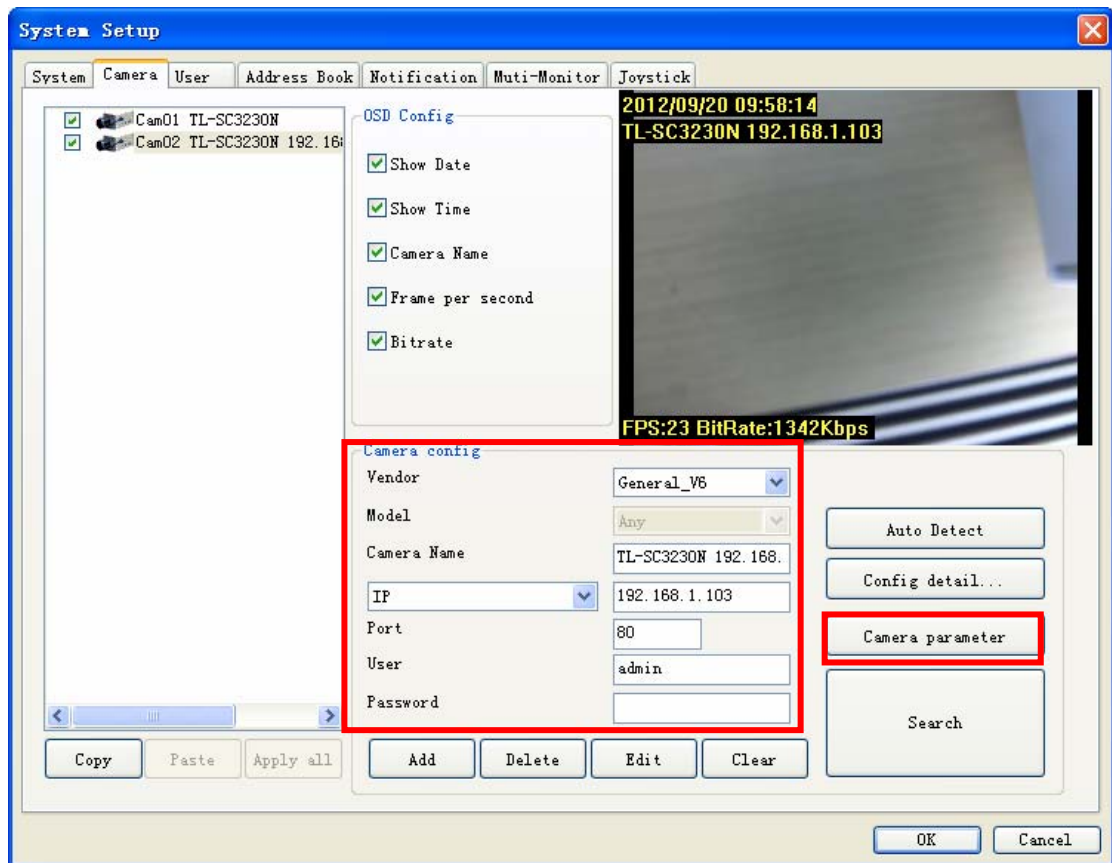
- **Camera parameter:** If you need to change the camera parameters, click Camera parameter button.



- Select the Video codec, protocol, and RSTP port for the current connection.
- Check **Enable Audio** if you need to receive audio streaming. If you need to record audio into file, you must check both **Enable Audio** and **Enable Audio Record**.
- **Search:** Click the **Search** button to search the camera(s) installed in LAN, wait for searching complete, select the cameras as your need, and then click **OK** to finish this job.



Step5: Confirm all added camera's setting parameters.



Step6: Click **OK** button.

Step7: Now you can preview live stream at main page.

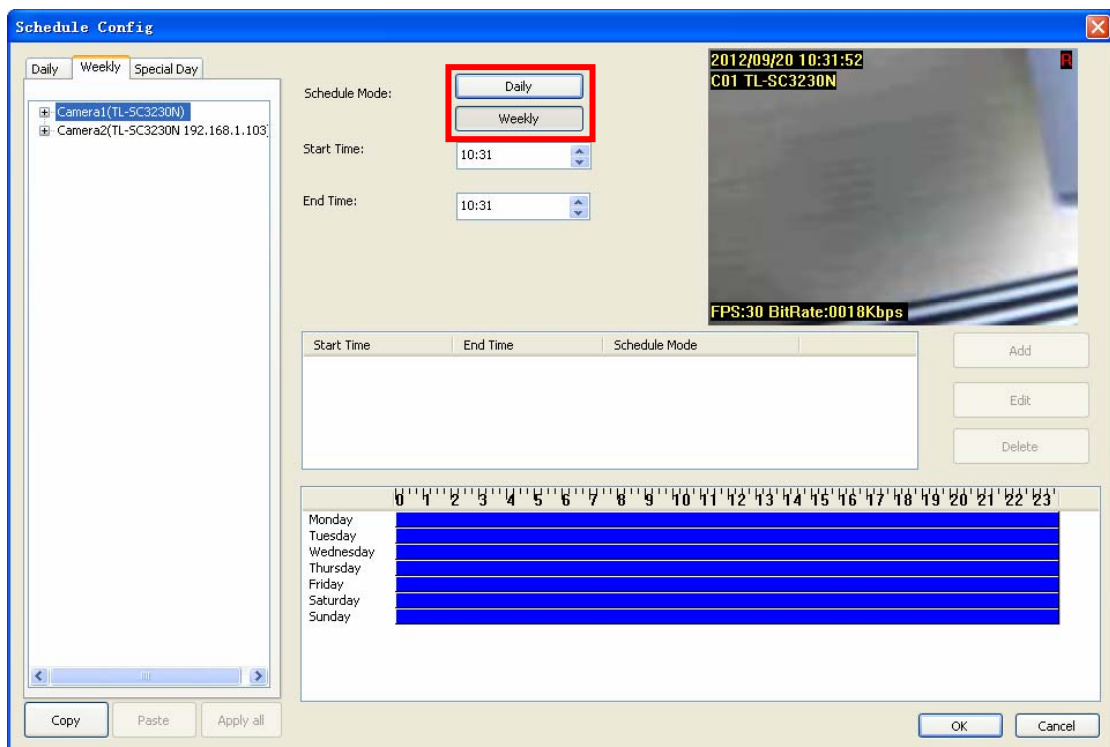
3.3 Configuration of schedule recording



Step1: Click the Schedule Setup button.



Step2: Select the schedule type that you need.

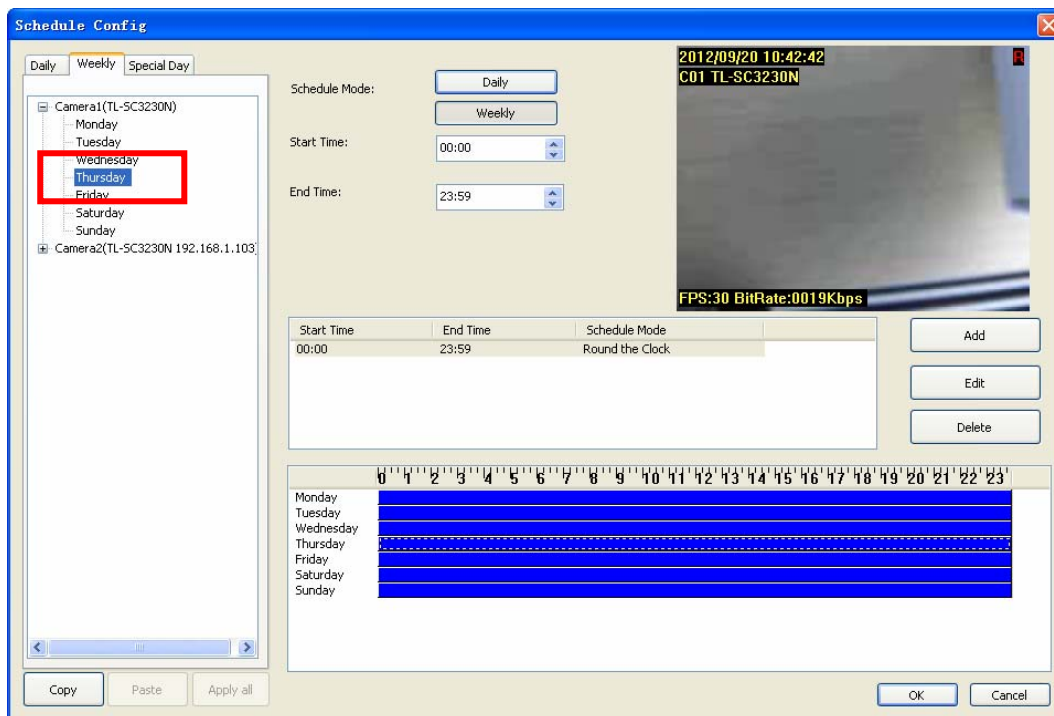


- **Daily mode:** configure each camera's recording time and type on every day.
- **Weekly mode:** configure each camera's recording time and type in each weekday.
- **Special day mode:** configure each camera's recording time and type on specified day.

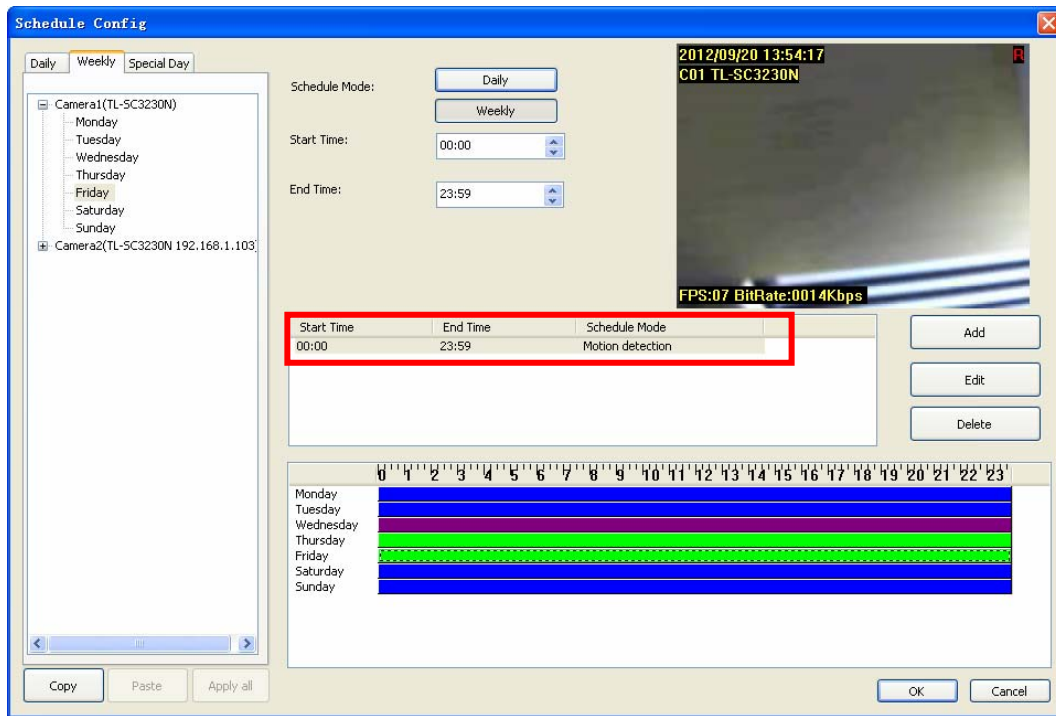
Note:

If the Special day schedule was set, when the system time matched the Special day setting, system will execute this special day setting immediately as top priority, even system has the same time period setting of daily or weekly schedule setup.

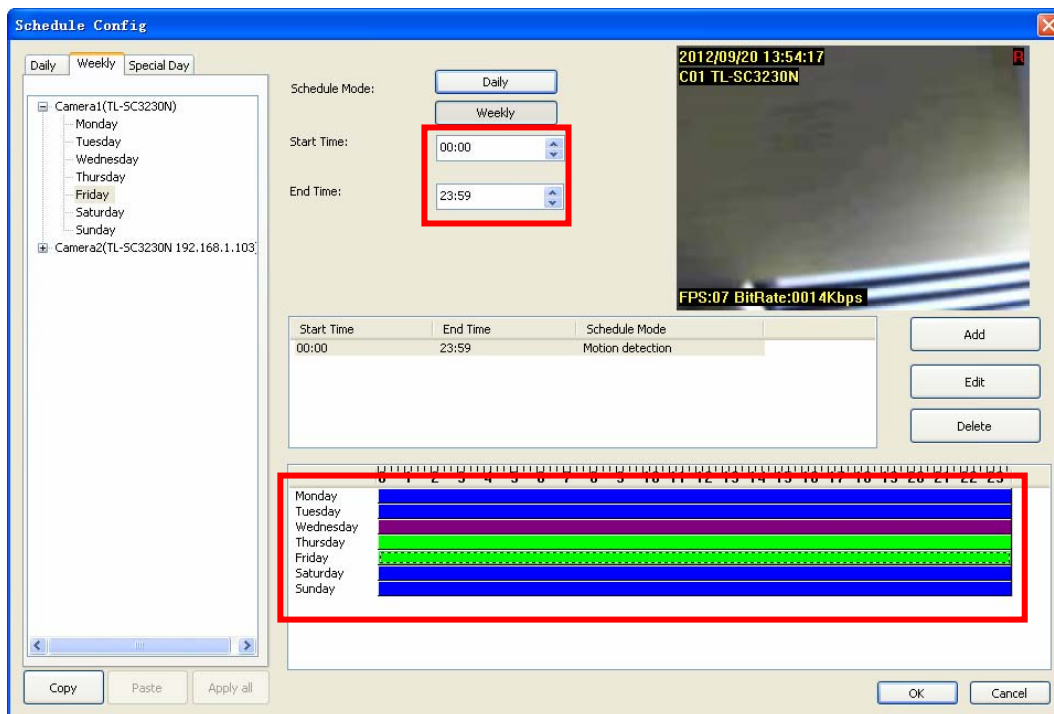
Step3: Select one camera for schedule configuration and select one of weekday for schedule setup (weekly mode)



Step4: If you want to modify a specified schedule period, Select the period first from time period list or time period bar, or skip this step.

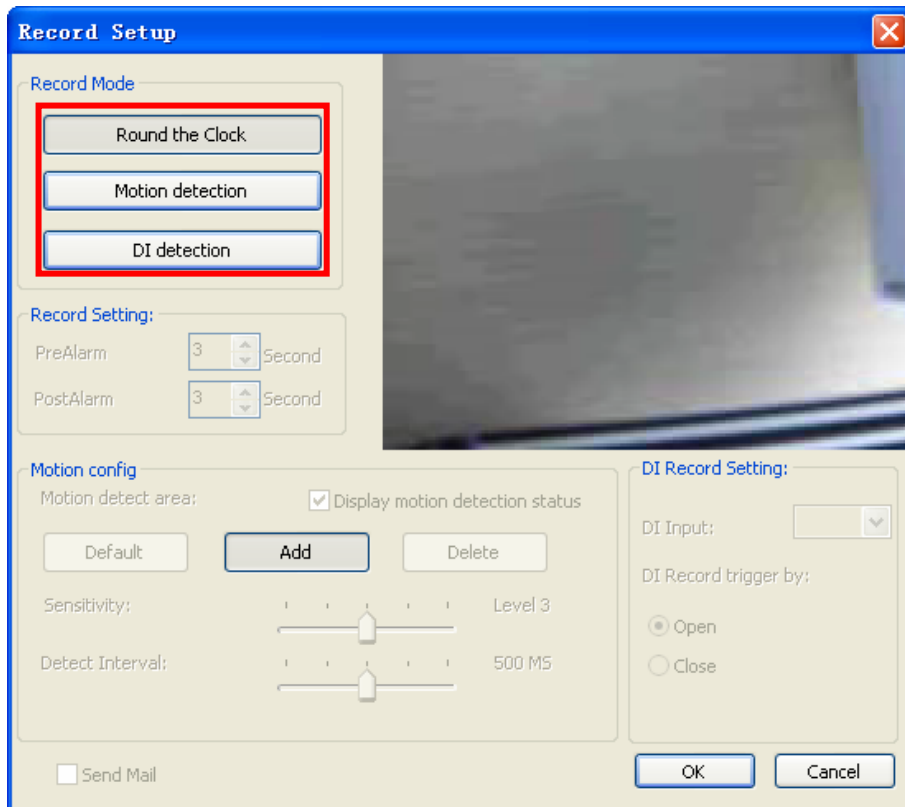


Step5: Modify the time period from time-select control or drag the period bar below.

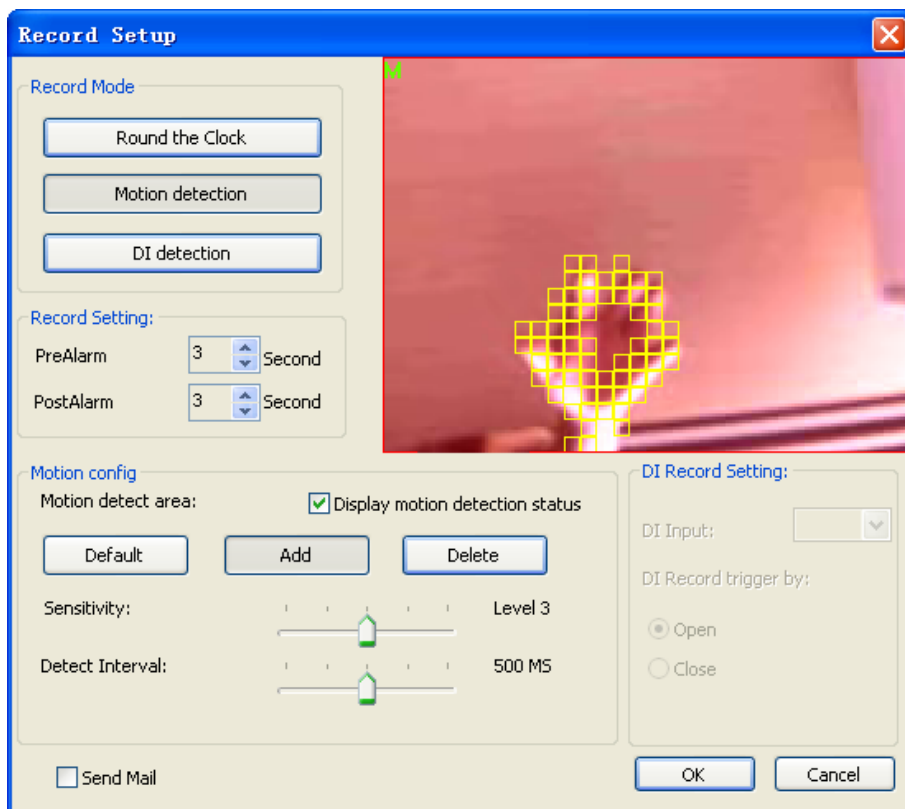


Step6: After setting with time period, if you want to add a new schedule, click **Add**, or you want to modify a selected schedule, click **Edit**.

Step7: Choose **Round-the-clock** or **Motion detection** or **DI detection** record mode.



- Motion detection mode: if you select the Motion detection mode, you have to configure the detection area, or use default setting.



- **Add detection area:** Click **Add**, then drag a rectangle window on the preview image.
- **Remove detection area:** Click **Delete** button, then drag a rectangle window on

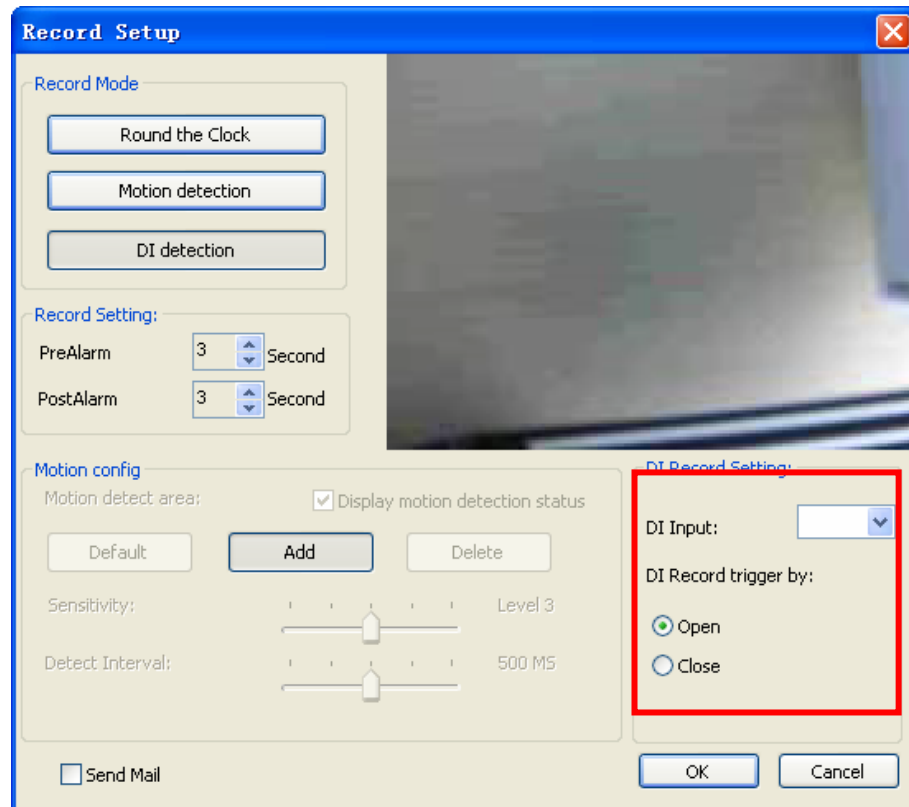
the preview image.

- **Recover to default area:** Click the **Default** button.

 **Note:**

The red transparent window is the monitored area while the rest of the window will not be monitored.

- DI Record Mode:



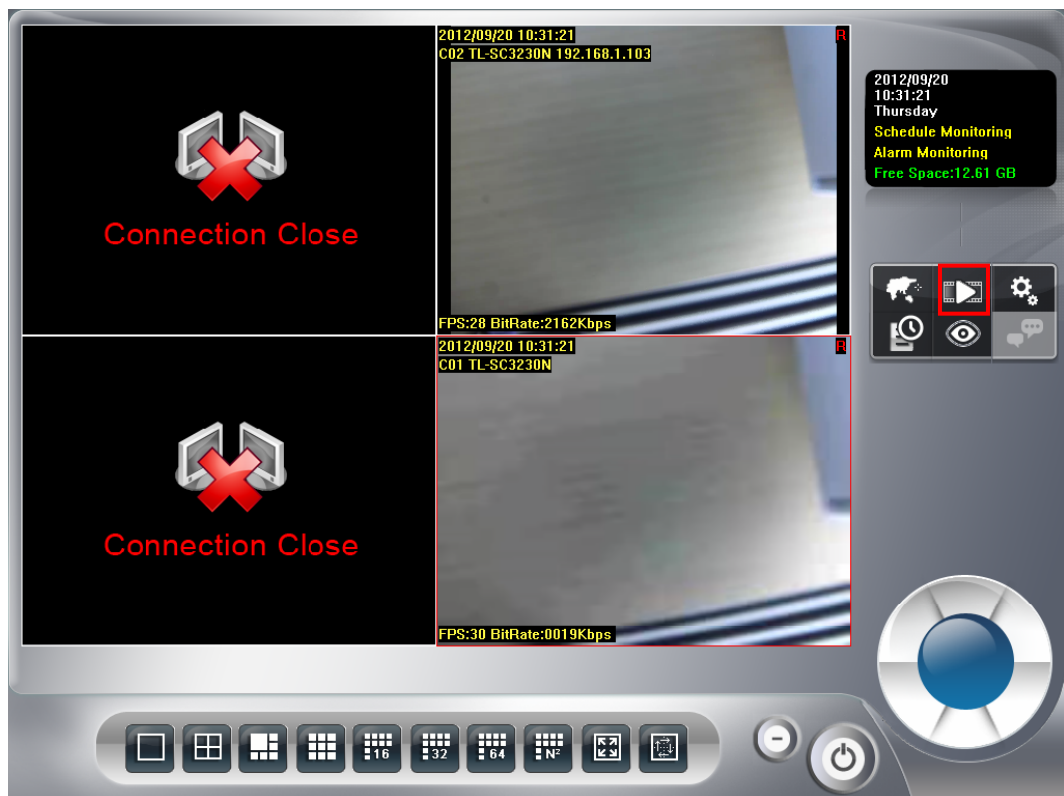
- Select trigger recording and specify the DI input source.
- Set trigger recording depend on whether status of DI is open or close.

Step8: Start schedule monitor. Click the monitor  button and select **Start Monitor all** or **Start Monitor Schedule**.

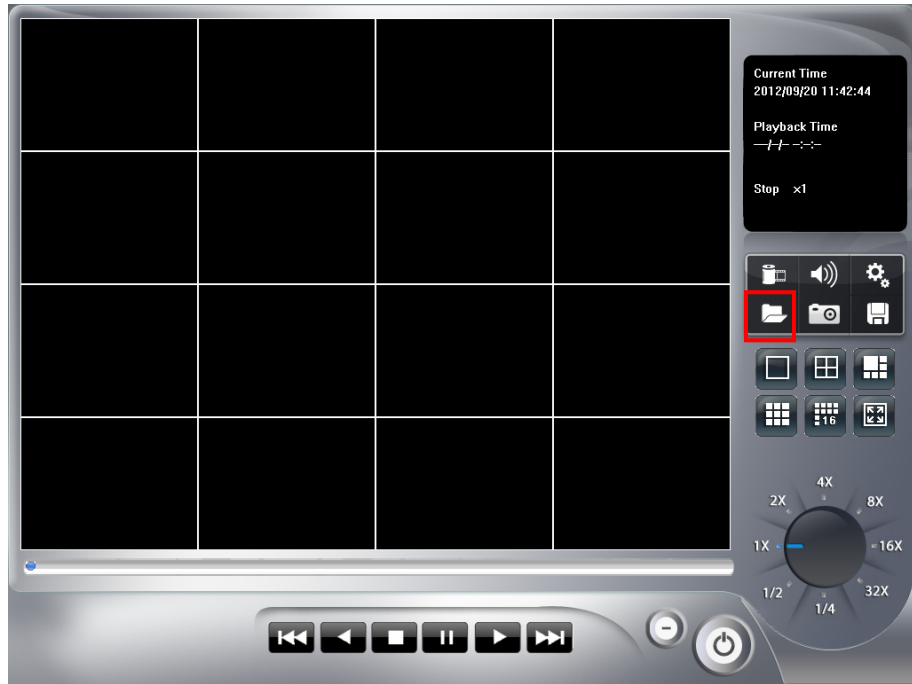


3.4 Playback

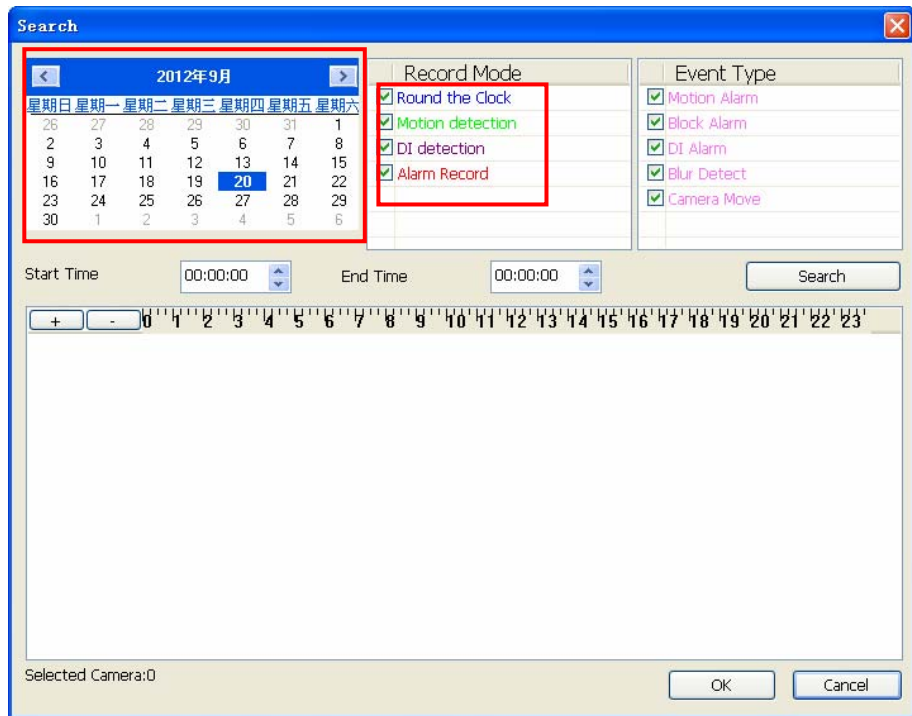
Step1: Click the playback  button to launch playback panel.



Step2: Click the search  button to approach search dialog.



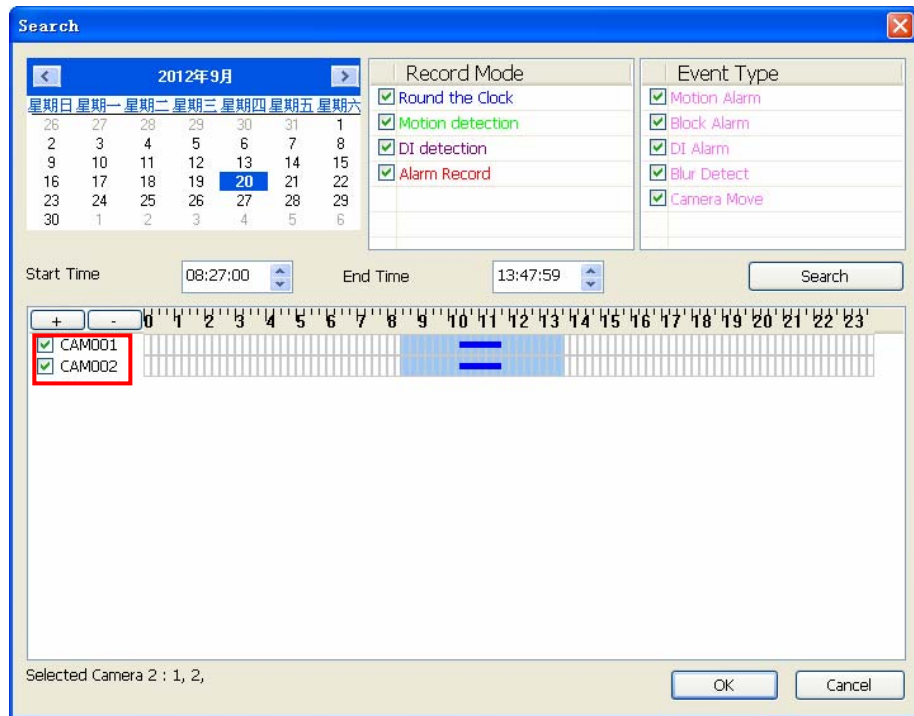
Step3: Click on the date that you want to search recorded files. Choose **Record mode(s)** that you need (Round the clock, Motion detection, DI detection, Alarm) and click **Search**.



Step4: System will display recorded file(s) status in control list below.

- **Blue:** Round the clock recorded file.
- **Green:** Motion detection recorded file.
- **Red:** DI triggered recorded file.

Step5: Drag mouse cursor on the list control to select playback time period. Select the camera(s) to playback recorded file(s). System allows maximum 16 cameras playback at once.



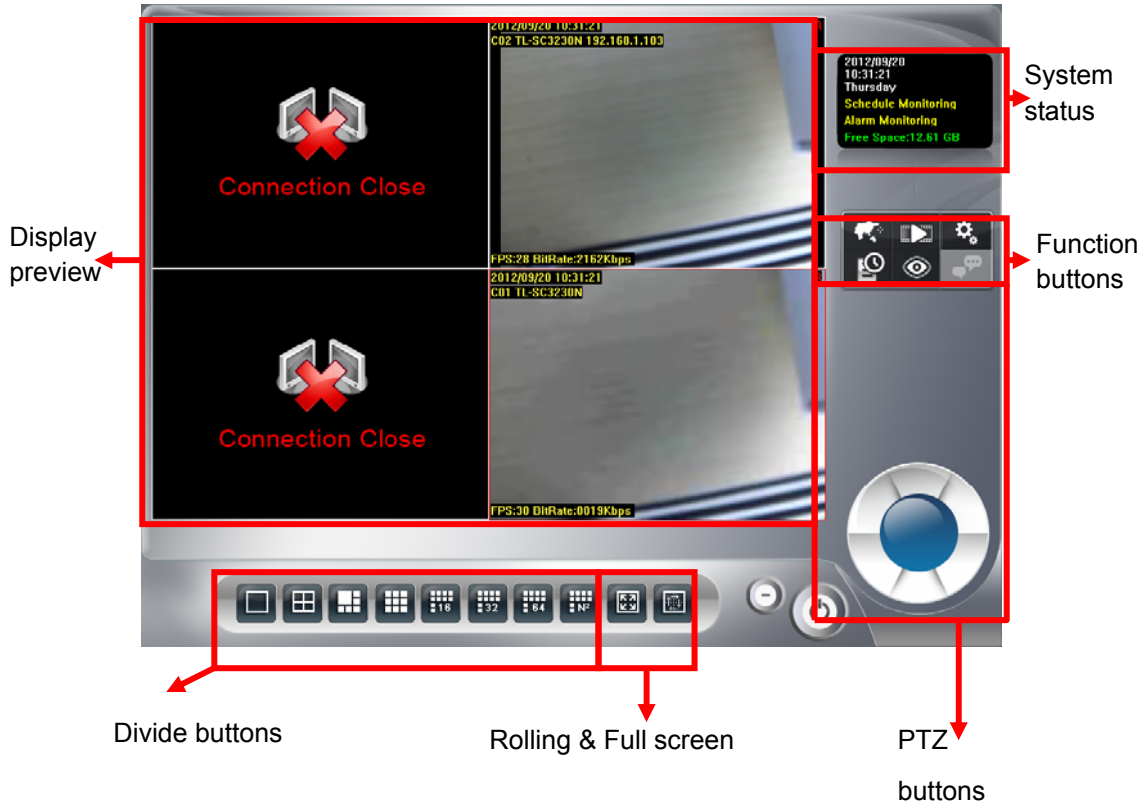
Step6: Click **OK** to finish search recorded files for playback job.

Step7: Click the play  button to start playback procedure.

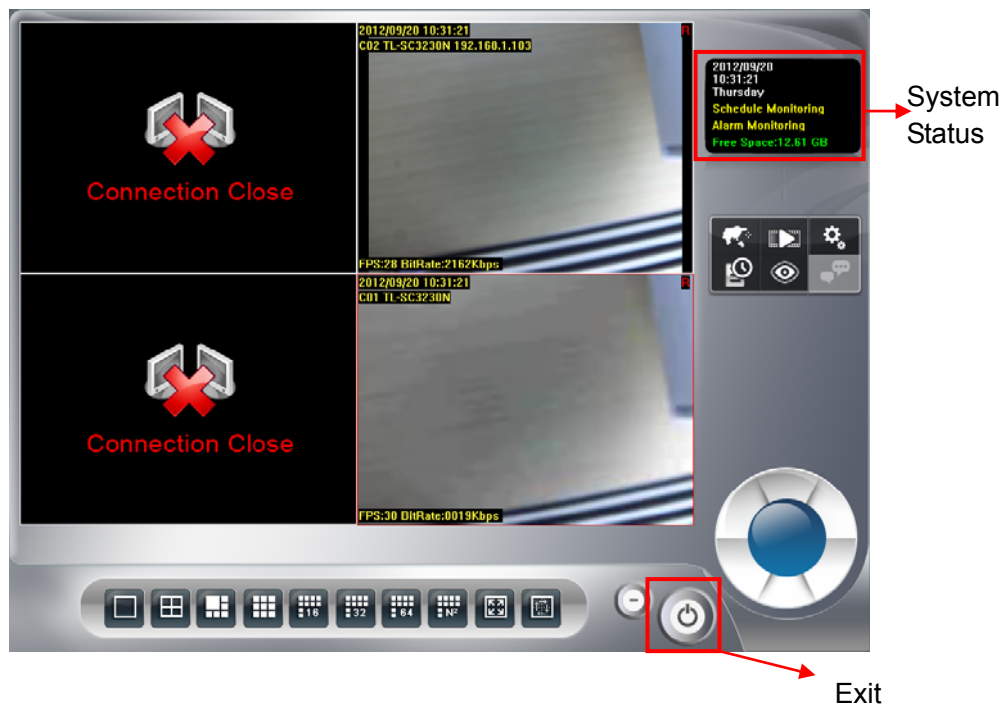



Chapter 4 Main-console

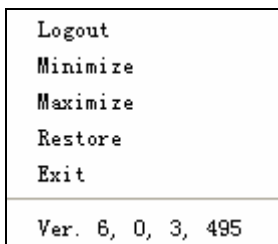
This is the main console of the system, providing live stream preview, system setup, E-Map, schedule setup, playback, start or stop monitor, PTZ controls, and so on.



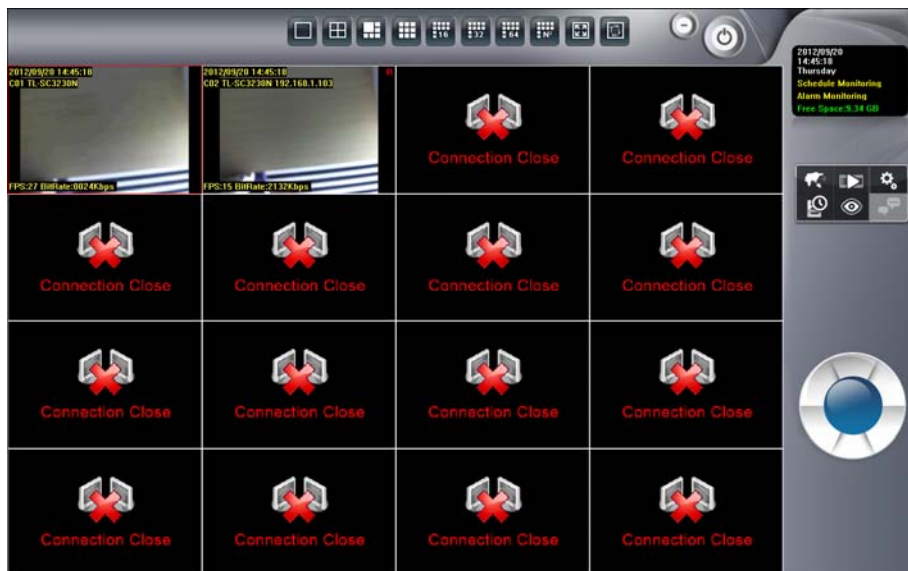
4.1 System status



Click the exit  button and you will see the following options.



- Logout: Log out current user.
- Minimize: Minimize the main console to taskbar.
- Maximize: Switch display mode to Maximize mode. When switching to Maximize mode, system will auto fit out whole screen, and set maximize display area, all buttons function just the same as normal mode.



- Restore: Switch display mode to normal.
- Exit: Shut down Surveillance Manager.
- Version: Display version number.

System status:



1. System Date
2. System Time
3. Weekly day
4. Schedule and Alarm Monitor status. If monitor stop , it will show nothing
5. Hard disk available free size

The system status can configure at system setting. Please refer to “Setup page”.

Hard Disk available free size has three color types, they mean:

- **Green:** normal
- **Yellow:** recycle job executing

➤ **Red:** system can't found available free space any more.

4.2 Screen Division

Assign the preview screen to preferred layout division by clicking these buttons.

To switch to single camera display, just double click on a particular sub-screen. Double click on the screen again to restore previous screen division layout.



Divide to 1 Screen



Divide to 4 Screen(s)



Divide to 6 Screen(s)



Divide to 9 Screen(s)



Divide to 16 Screen(s)



Divide to 32 Screen(s)



Divide to 64 Screen(s)



Divide to NxN Screen(s)



Switch to Full screen mode



Start Rotate sub-screen(s)

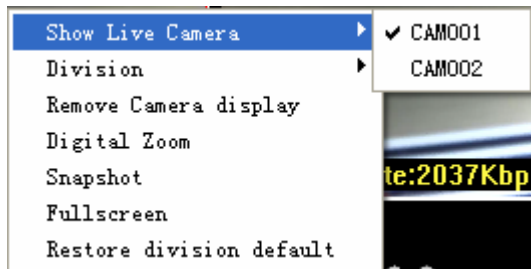


Stop Rotate sub-screen(s)

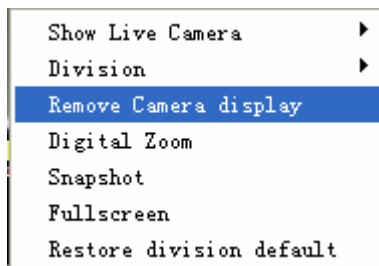
4.3 Operation with sub-screen:

4.3.1 Define display camera(s) sequence

1. To switch display sequence in sub-screen(s), press and hold mouse left button on source sub-screen, then drag to target sub-screen and release mouse left button.
2. To switch current sub-window to another camera, click mouse right button on the sub-screen, then choose the live camera you needed.

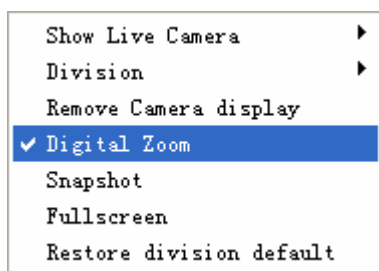


3. To remove camera display, click the mouse right button and click Remove Camera display on popup menu.



4.3.2 Digital Zoom at sub-screen

1. Click mouse right button on sub-screen, and check **Digital Zoom**.



2. Move mouse cursor to the position that you want to zoom-in.
3. Roll mouse wheel forward to zoom-in.
4. Roll mouse wheel backward to zoom-out.
5. Press and hold mouse left button to drag the image at sub-screen onto the position in which you prefer.
6. To cancel digital zoom mode, click mouse right button and un-check **Digital Zoom**.

4.3.3 Switch to Full screen

1. Click mouse right button and check **Full screen** on popup menu to switch Full screen mode.
2. Click **Esc** key on your keyboard or un-check **Full screen** on popup menu to return to normal display mode.

4.3.4 Snapshot of sub-screen

1. Click mouse right button and choose Snapshot on popup menu.
2. Configure with the image by Snapshot dialog as below.
3. Click Save button and choose the folder that you want to save to.



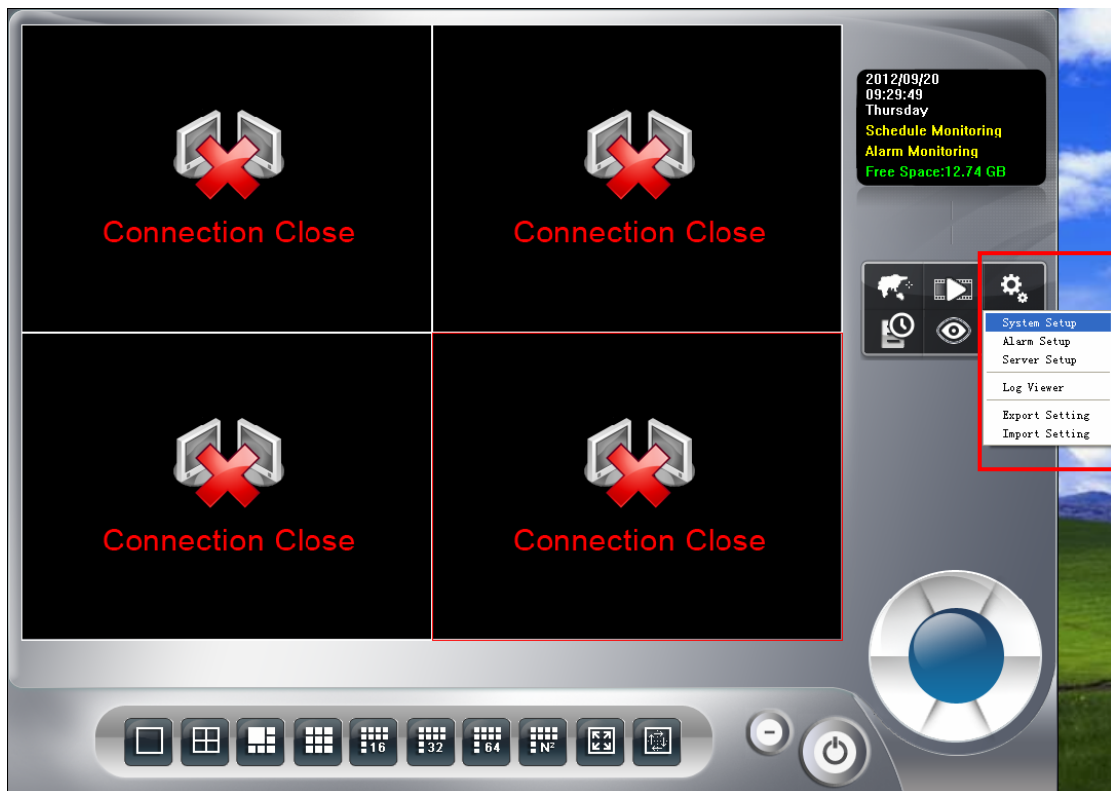
- **Bright:** 50 = Maximum brightness, -50 = Maximum dark
- **Contrast:** 50 = Maximum strong with Contrast, -50 = Minimum value of Contrast.
- **Grayscale:** Click to switch image to grayscale mode.
- **Sharp:** Click Sharp button to increase image sharp level.
- **Soft:** Click Soft button to increase image soft level.
- **Reset:** Click Reset button to restore image to original image.
- **Print:** Click Print button to print out image to printer.
- **Save:** Click "Save" button and then choose folder and file name to save the snapshot.
- **Exit:** Click "Exit" button to close the Snapshot dialog.

4.3.5 Restore division default

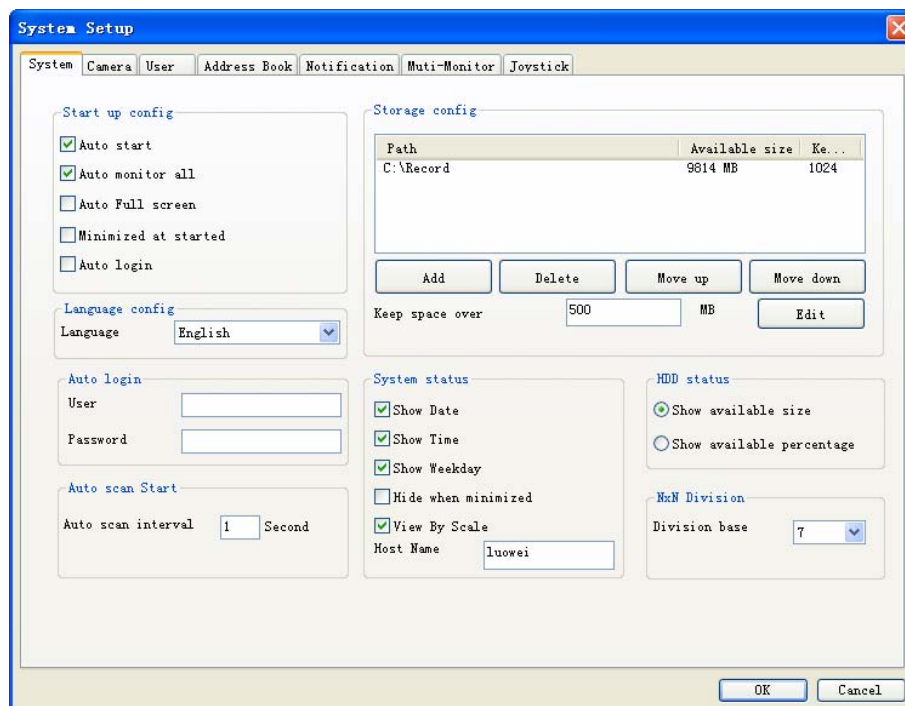
Reset division setting to default.

4.4 System setup

Click system setup  button and select **System Setup** to approach **System setup** dialog.



4.4.1 System setup



➤ Start up config:

- **Auto start:** Auto start main console while system boots up.
- **Auto monitor all:** Auto monitors all cameras when main console starts up
- **Auto Full Screen:** Auto configure as full screen when main console starts up.
- **Minimized at started:** Auto minimize main console when system boots up.
- **Auto login:** Auto login main console when system boots up. It must configure “Auto login” information.

➤ **Language config:**

- **Language:** Click on the combo box of language, and select the language that you prefer. The system will change language immediately.


➤ **Auto scan start:**

- **Auto scan interval:** Set the screen rotation interval by seconds.

➤ **Storage config:**

- **Add:** Click **Add** to select a new folder for recording work.
- **Delete:** Click **Delete** to remove selected folder from list.
- **Move up/Move down:** Click **Move up** and **Move down** to change priority of recording folders. Top of list is the first priority of recording work.
- **Keep space over:** Set **Keep space over** in MB, which means when the hard disk free space is less than the setting number, the system will recycle to kill the oldest recorded files. Please note that you should click **Edit** after you modified **Keep space over** value.

➤ **System status:**

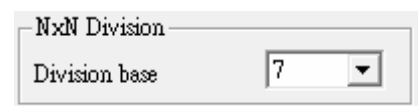
- **Show Date/Show Time/Show Weekday:** Select status item(s) for display on system status window. Check means this status will be displayed on main console status window. Otherwise, it will display nothing.
- **Hide when minimized:** If “Hide when minimized” is check, when the main console is minimized, the icon will move to system tray at right-down corner. Click the  icon at system tray to restore main console.
- **Host Name:** define this Surveillance Manager system’s name for the other integration system.

➤ **HDD status:**

- **Show available size:** The main console will display free space of hard disk(s) by choosing **Show available size**.
- **Show available percentage:** The main console will display percentage of free space by choosing **Show available percentage**.

➤ **NxN Division:**

- **Division base:** Set the N of NxN division. When user click NxN division button, main console will divide the sub-screen(s) by this value.



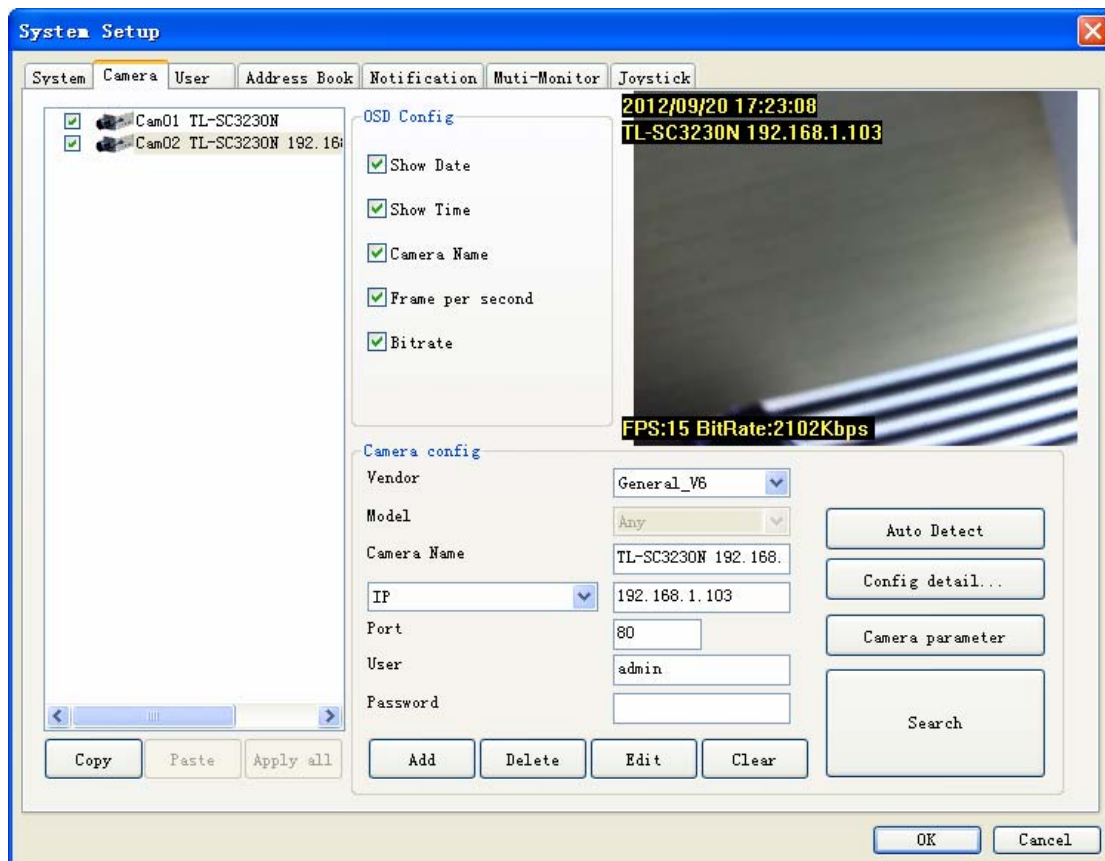
For examples:

If this value is set to 1, the divided sub-screen(s) is one sub-screen,

If this value is set to 2, the divided sub-screen(s) is four sub-screens.

If this value is set to 3, the divided sub-screen(s) is nine sub-screens.

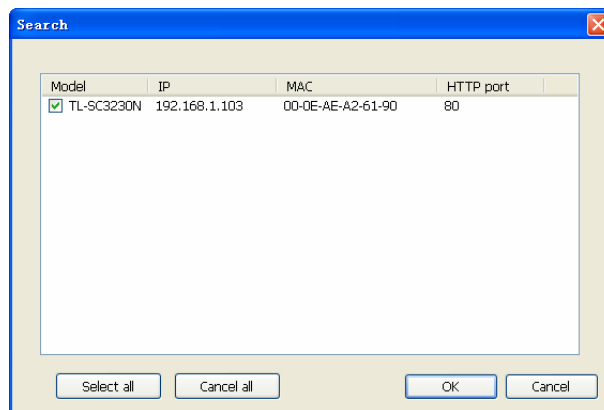
4.4.2 Camera



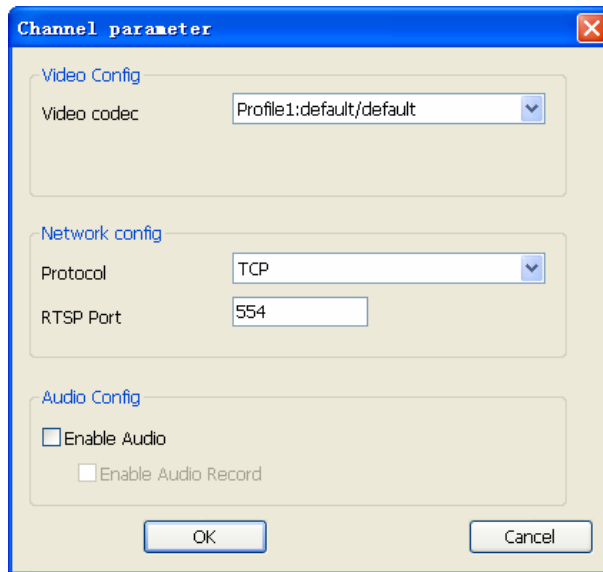
- **Camera list:** List all camera(s) installed at system. It is listed by camera index. Check each camera to enable them. If you need to disable some of these camera(s), please un-check them by clicking checkbox.
- **Clone Camera setting:**
 1. Select one camera and click **Copy**, or click mouse right button and select **Copy on pop-up menu**.
 2. Copy only camera's configuration, camera's parameter or both of them.
 3. Select a target camera and click **Paste** to update the settings. (Or click mouse right button on target camera, and select **Paste** on pop-up menu)
 4. Click **Apply all** button will toggle update all cameras setting with the copied setting.
- **OSD Config:** System could show some information on the sub-screen. Check the checkbox before the information to display the corresponding information. The information will display on the preview screen at left-upper corner.
 - **Show Date:** Displays system date.
 - **Show Time:** Displays system time.
 - **Camera Name:** Displays this Camera name
 - **Frame per second:** Displays the frame per second of this channel.
 - **Bitrate:** Displays the bit-rate per second of this channel.
- **Camera Config:**
 - **Vendor:** Select Vendor name of this camera. If the selected Vender is not identical to the

camera, this channel may not work correctly. General: For all supported IP cameras.
NVR: For backup streaming from another Surveillance Manager NVR.

- **Model:** Select Model name of this camera. If the selected Model is not identical to the camera, this channel may not work correctly.
- **Camera name:** Set this channel's camera name to identify this camera in system.
- **IP:** Set this camera's IP.
- **Port:** Set this camera's HTTP port.
- **User:** Set the User name for this camera. This User name must have the authority to login the specified camera.
- **Password:** Set the Password for this camera. This system will use the User name and Password to login specified camera.
- **Add:** Click **Add** to insert camera configuration to system.
- **Delete:** Click **Delete** to remove camera configuration from system.
- **Edit:** Click **Edit** to modify the configuration from system.
- **Clear:** Click **Clear** to clear all field for a new setting.
- **Search:** Click **Search** to search the cameras at LAN. The system will pop up a dialog and display all found cameras in the list. Wait for search completed and check the cameras which you need. Click **Select all** to auto check all cameras in the list. Click **Cancel all** to auto un-check all cameras in the list. Click **OK** to confirm all selected camera and close this page. Click **Cancel** to cancel all actions and close this page.



- **Configure detail button:** Click **Config detail** to access web page of the selected camera.
- **Camera parameter button:** Click **Camera parameter** to approach channel parameter page.



Video codec: Select the Video codec which system will receive from camera. Note that the codec capability depends on the camera.

Protocol: Select the protocol via which the system connects to the camera.

RTSP Port: Specify RTSP port for connecting to camera.

Enable Audio: Set Audio enabled to receive audio streaming form camera. If you need to listen live audio, this function must be enabled.

Enable Audio Record: Check this box to save audio data into recorded file.

 **Note:**

The Audio Record must Enabled with “Enable Audio” value both.

Click **OK** to save the connection configuration and return to the previous page. Click **Cancel** to cancel the configuration on this page and return to the previous page.

- **Channel parameter Page(NVR):**

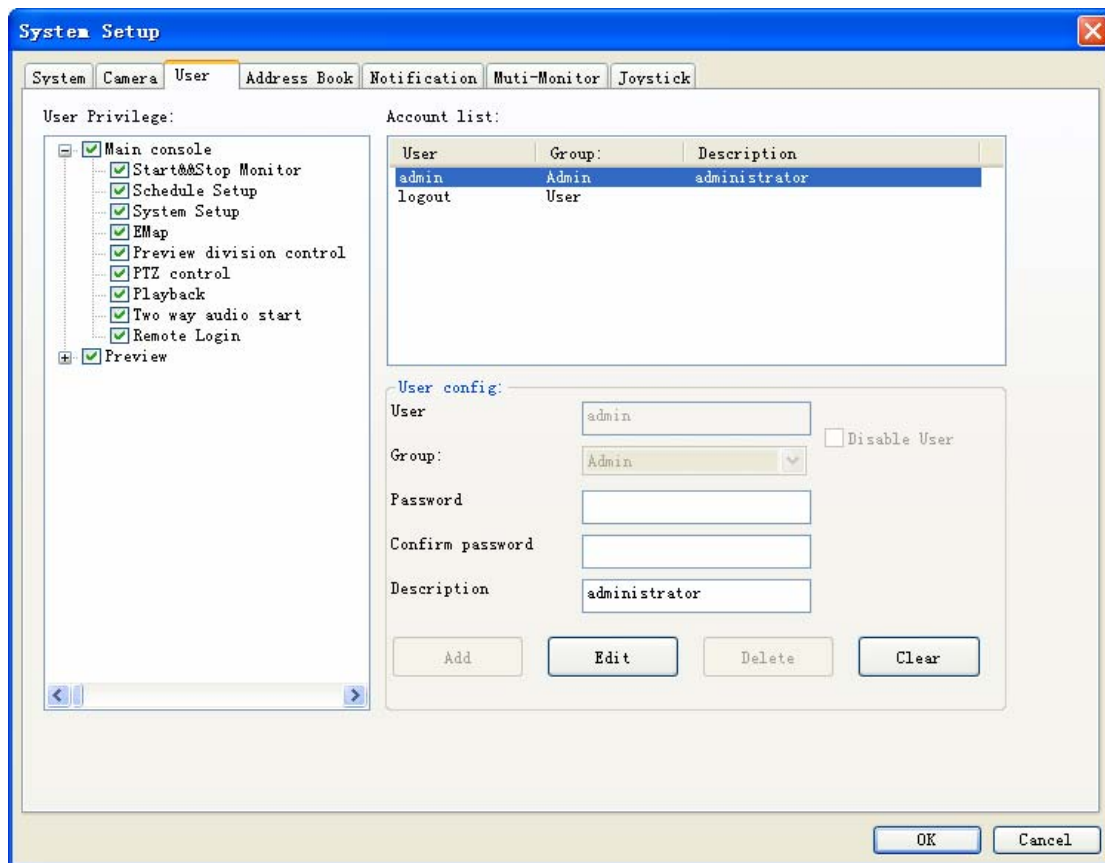
Channel: Select which channel for backup.

Network config: Set RTSP connection port.

Enable Audio: Set Audio enabled to receive audio streaming form NVR. If you need to listen live audio, this function must be enabled.

Enable Audio Record: Check this box to save audio data into recorded file.

4.4.3 User



- **User Privilege:** The user Privilege tree is to define user's privilege of each function of system. Check box means the user can use this function and un-check means the user can't use it.
 - **Main console:** It controls the main functions of the system. The user must have some of these privileges at least or the user can not do anything with system.
 - **Start and Stop Monitor:** This function means the user can start or stop system monitor work (schedule recording).
 - **Schedule Setup:** The privilege of the user can access schedule setup page.
 - **System Setup:** The privilege of the user can access system setup page.
 - **EMap:** The privilege of the user can use E-Map function.
 - **Preview Quad control:** The privilege of the user can change division of sub-screen.
 - **PTZ control:** The privilege of the user can control Pan, Tilt, and Zoom functions of camera.
 - **Playback:** The privilege of the user can playback recorded files.
 - **Two way audio start:** The privilege of the user can enable two-way audio with camera.
 - **Remote Login:** This user could login remote service or not.
 - **Preview:** The privilege of the user can preview live streaming. The user can preview the live streaming of check cameras.
- **Account list:** Display all users' information of system. If you want to modify user's configuration or delete user account, please click on the user name in the list first. When you

have modified user's information (add, edit or delete), please confirm the data appears in the list.

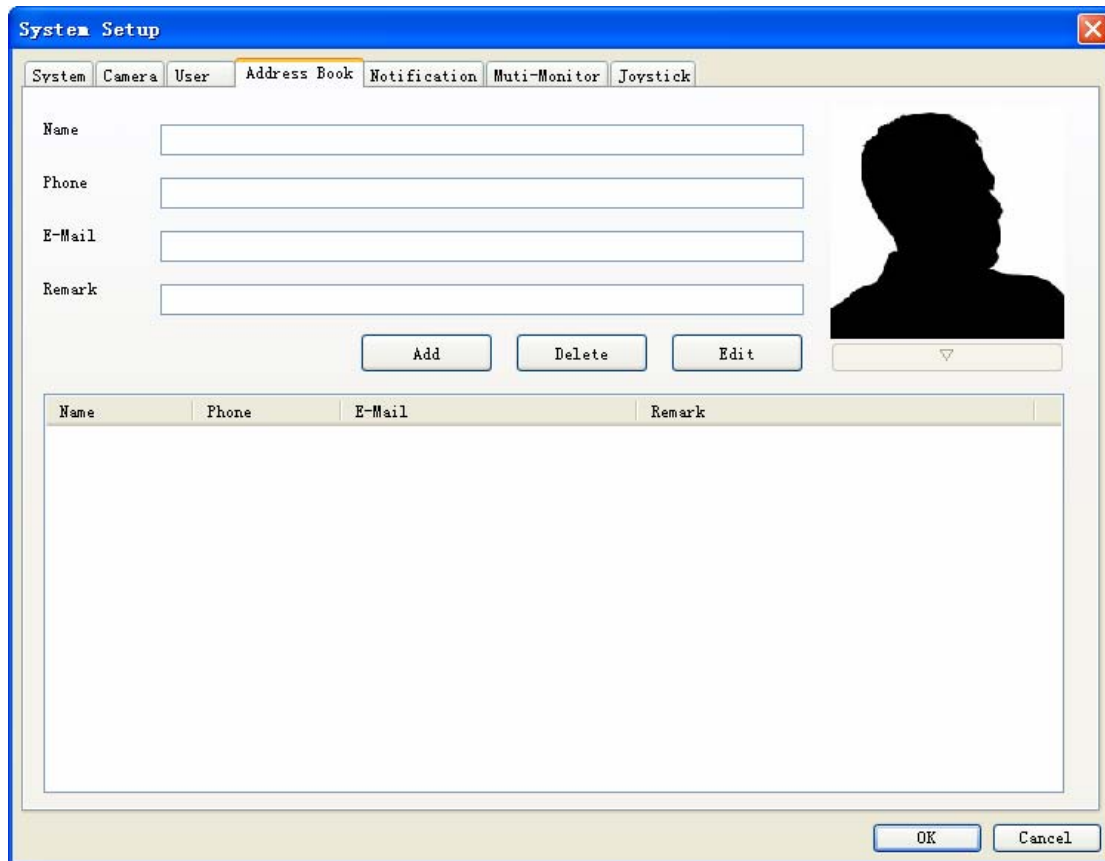
- **Admin account:** This user will own privilege of system administrator.
- **Logout account:** This is a special account when system is under logout status.

➤ **User config:**

- **User:** User name.
- **Group:** Select the group of the user. The admin group has all privilege of system by default and the user group only has main console privilege by default.
- **Password:** The password of the user for login system.
- **Confirm password:** Retype the password.
- **Description:** The user can specify some description for this account.
- **Disable User:** Check this box to disable the user account.
- **Add:** Enter user's information and check user's privilege first, then click "Add" button to add new user to the list.
- **Edit:** Click on the user name of the list first, and then modify the data of this account. **After modified data, you must click the "Edit" button to confirm it.**
- **Delete:** Click on the user name of the list, and then click "Delete" button to remove the user account from list.
- **Clear:** Click the "Clear" button to clear all settings.

4.4.4 Address Book

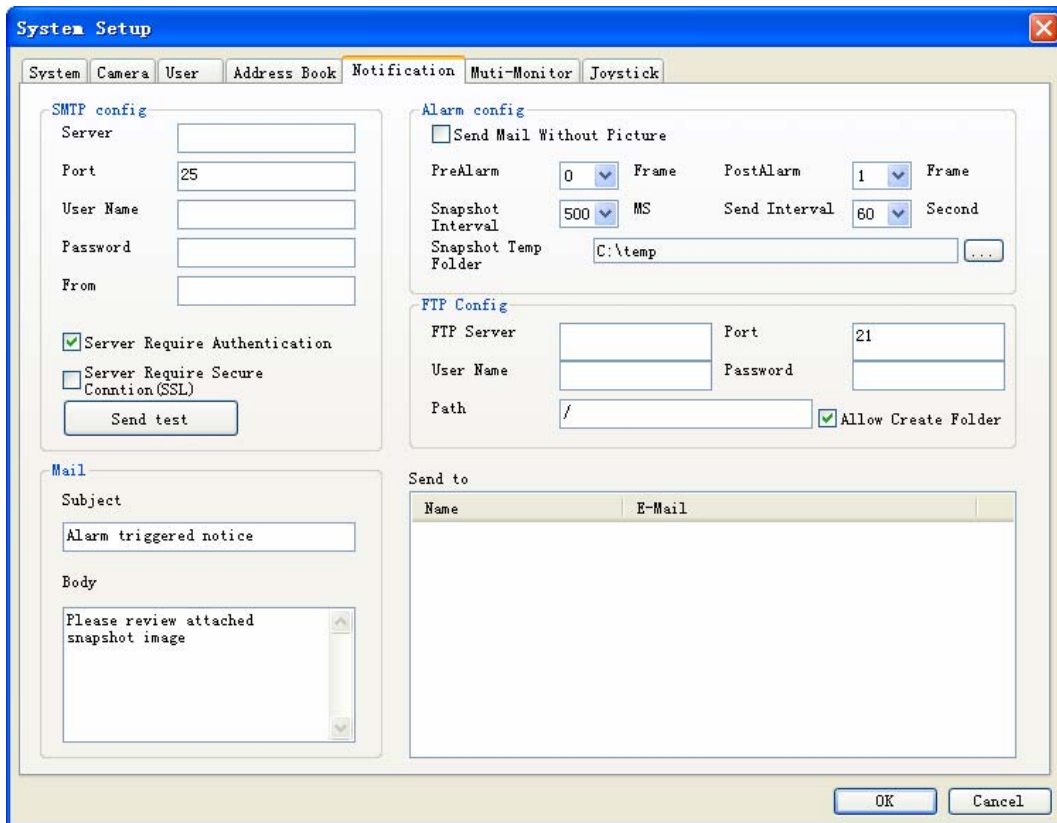
Setting address book for sending event mail or query phone from here.



- **Add address book record:** Enter the contact information, and then click **Add**.
- **Delete address book record:** Click on the contact list which you want to delete, then click **Delete**.
- **Edit address book record:** Select the record which you want to modify. Modify the information, and then click **Edit**.
- **Change photo of contact:** Click the “▽” button below the photo, and then select a picture to replace it.

4.4.5 Notification

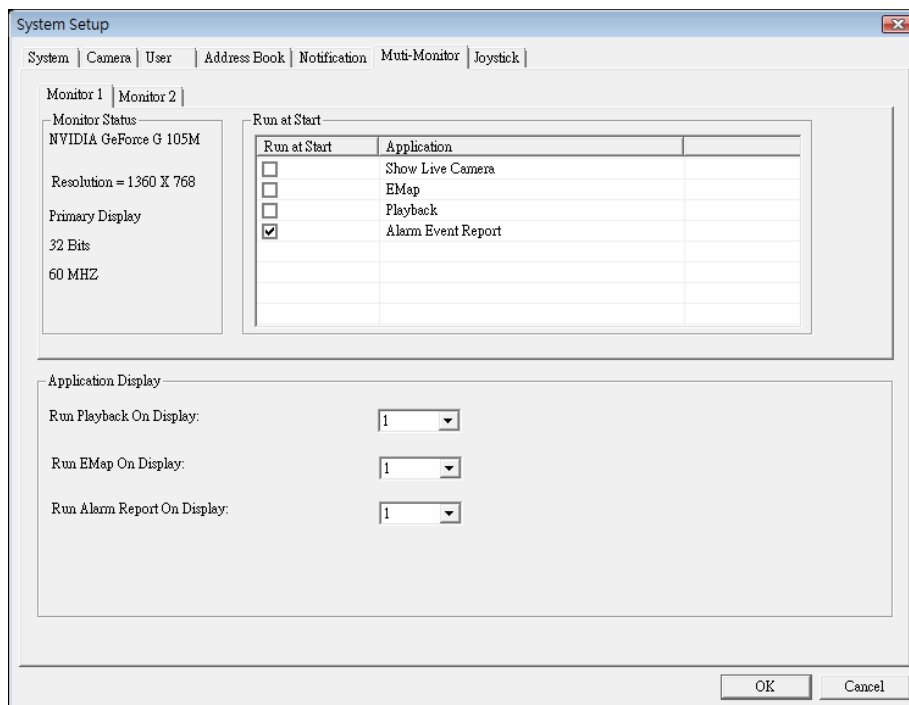
Configure the Notification information for event notice.



- **SMTP Setting:** Enter the SMTP server connection information for sending event notice mail.
 - **Server:** SMTP provider IP address or DNS.
 - **Port:** Mail Server's SMTP port.
 - **User Name:** Login SMTP server's user account.
 - **Password:** Login SMTP server's password.
 - **From:** The "From" field of E-Mail.
 - **Account Authentication:** Check this box for the SMTP server which needs authentication
 - **Secure Connection (SSL):** Connect to SMTP with SSL authentication.
 - **Send Test:** Click **Send test** to send a test mail.
- **Mail Content:** Set the "Subject" and "Body" of event notice mail.
- **Alarm Setting:** Configure the attached snapshot picture rule of event notice mail.
 - **Pre-Alarm:** Set for how many snapshot pictures should be captured before event is triggered.
 - **Post-Alarm:** Set for how many snapshot images should be captured after event is triggered.
 - **Snapshot interval:** Set the interval between each snapshot.
 - **Send Interval:** Set the interval between each send-out notice mail.
 - **Picture Temp Folder:** Select a folder for store snapshot pictures, these pictures will be deleted when system is shutdown.
- **FTP Config:**

- **FTP Server:** Set the FTP site's IP for system upload image when event is triggered.
 - **Port:** The FTP server's port.
 - **User Name:** The account to login FTP server.
 - **Password:** The password to login FTP server.
 - **Path:** the system will upload images to defined folder.
 - **Allow Create Folder:** If check this field, system will create folder automatically for new event's upload process. If un-check this field, system will only upload image to define folder.
- **Send to Config:** Select the mail accounts for send schedule record notification mail.

4.4.6 Multi-Monitor

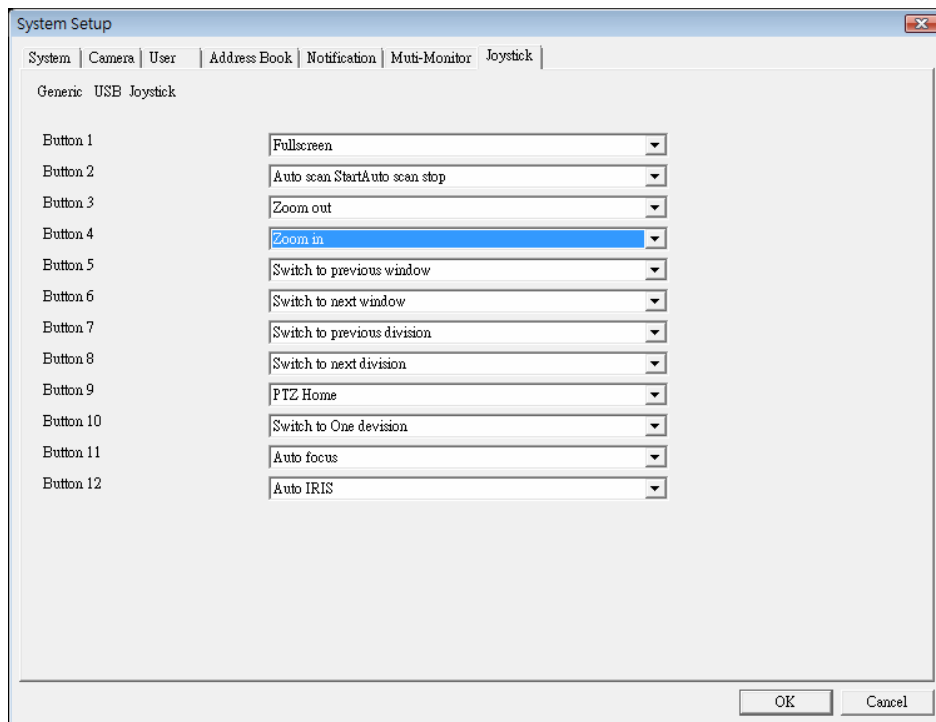


- **Monitor list tab-control:** Select which monitor to be configuration.
- **Monitor Status:** Displays monitor information.
- **Run at Start:** Check the functions which will be run at selected monitor on system start.
 - **Show Live Camera:** Displays extra live preview window on selected monitor.
 - **EMap:** Displays E-Map on selected monitor.
 - **Playback:** Execute Playback on selected monitor.
 - **Alarm-Report:** Displays Alarm status report on selected monitor.
 - **Application Display:** Definition when the user click application buttons on Main-console, the application will display on which monitor.

Note:

The system will auto-detect monitor connect status, If you can't find out extra-monitor, please check monitor connect status and re-open setup page.

4.4.7 Joystick



This page displays the joystick was found at system, and you could define each button's function with drop-down list.

Surveillance Manager support all kinds of joystick by **Microsoft Direct-Input** , please confirm install joystick driver first.

Button's function list:

1. Full-Screen:
Switch current display mode to full-screen or normal.
2. PTZ Up/Down/Left/Right/Up-Left/Up-Right/Down-Left/Down-Right/Home:
Move Pan-Tilt camera direction.
3. Switch to next division / Switch to previous division / Switch to One division:
Change sub-screen division.
4. Switch to next window / Switch to previous window
Change focus camera window.
5. Auto Scan Start / Auto Scan Stop
Start auto scan or stop.
6. Auto Focus:
Trigger focus camera auto focus function.
7. Zoom in / Zoom out
Trigger focus camera zoom-in or zoom-out.
8. Auto IRIS:
Trigger focus camera auto-IRIS function.

9. Preset 1~16

Change focus camera direction to preset position.

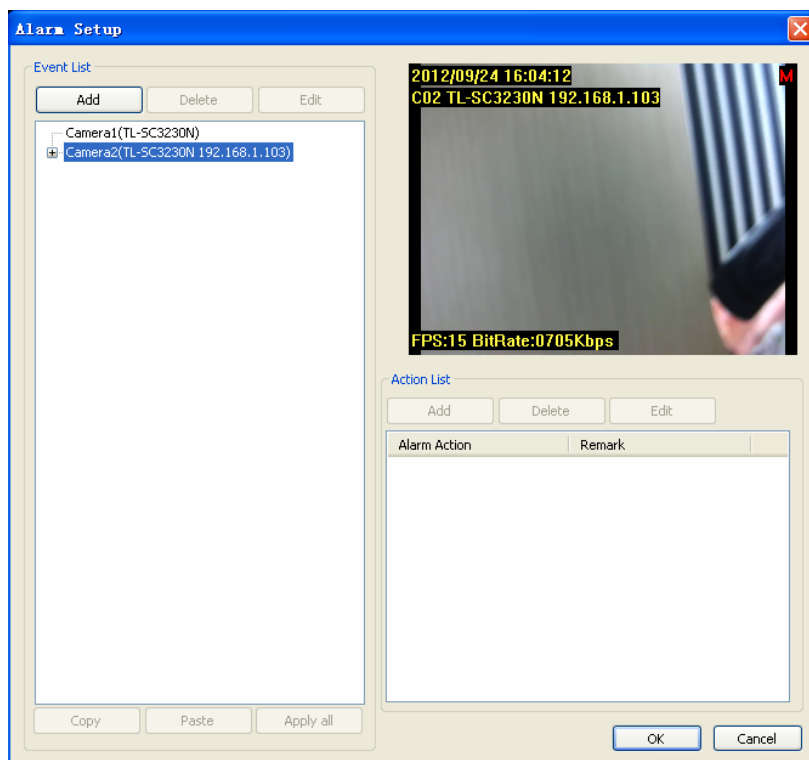
Note:

How many buttons will display on setting page depends on joystick driver, each button can define one function in the list above.

System will auto-detect joystick connect status, If you can't find out your joystick, please check the joystick connect status and re-open setup page.

4.5 Alarm Setting

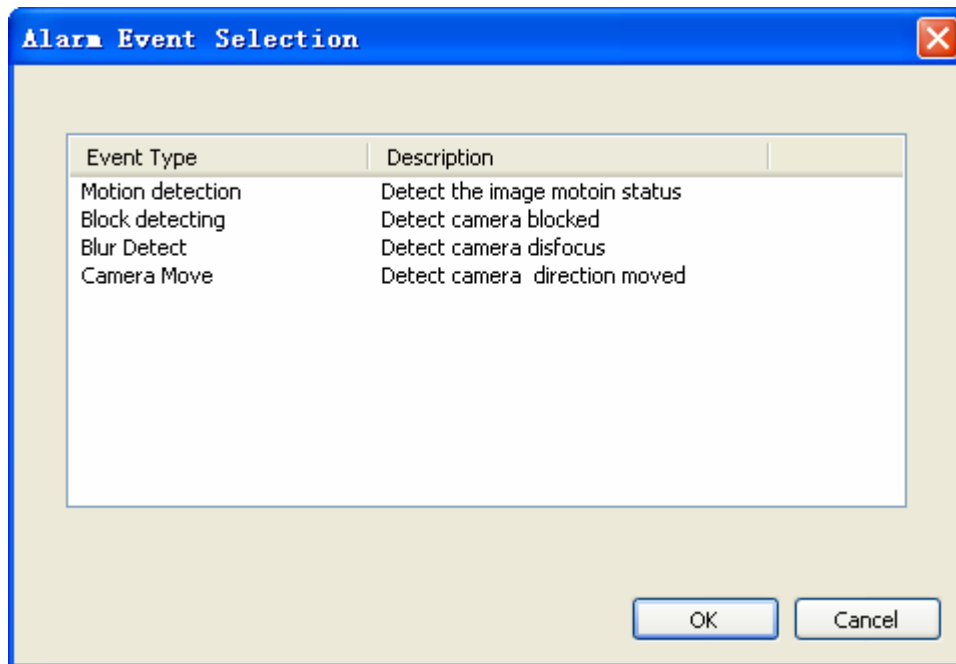
Click system setup  button and select **Alarm Setup** to approach Alarm setup dialog.



➤ Event Setting / Add Event:

1. Select the camera which you want to add event.

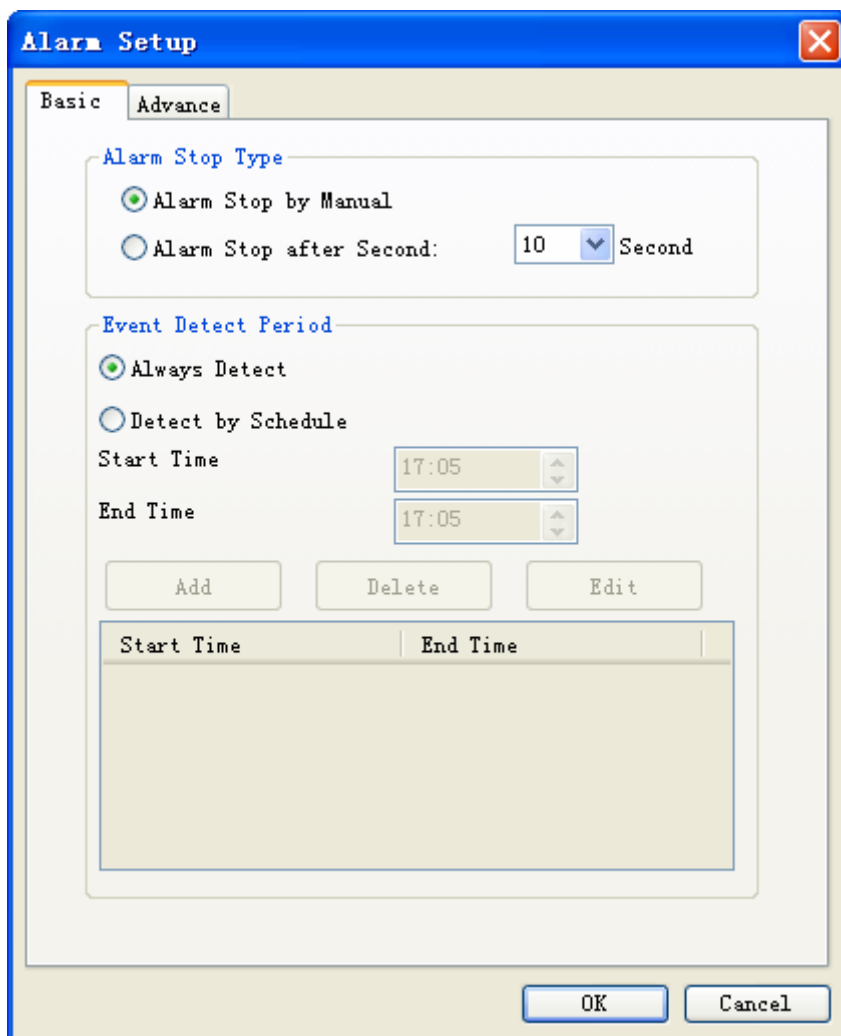
2. Click **Add** to approach Alarm Event Selection dialog.



3. Select the Event that you want to add, and then click **OK**, or double-click on the Event to add it.
 4. The selected Event will be added into the specified camera.
- **Event Setting / Delete Event:** Select an event which you want to delete, and then click **Delete** to delete this event.
 - **Event Setting / Edit Event:**
 1. Select the Event which you want to modify.
 2. Click the **Edit** button or double-click the Event which was selected.
 3. Configure the event setting, then click **OK** to save setting, or click **Cancel** to cancel edit job.

Please refer the items below to check detail information of event setting.

- **Event Setting/ Edit Event / Basic Setting:** Select the event which you want to modify. Click the **Edit** button or double-click the Event which was selected to display the **Alarm Setup** dialog.

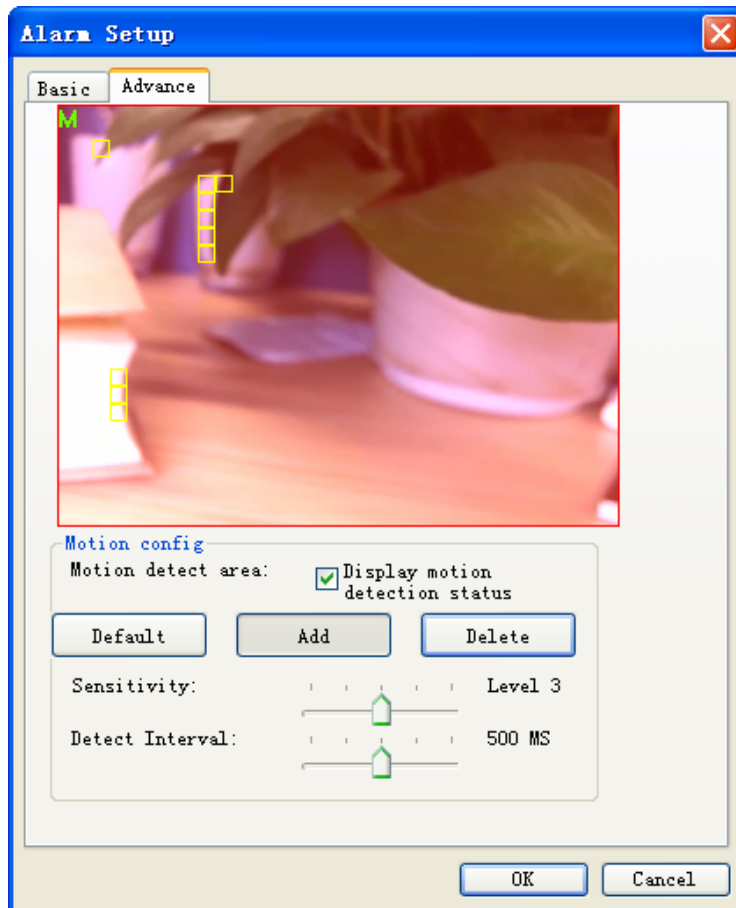


- **Auto Stop Type:** Alarm Stop by Manual: Once event was triggered, it would keep alarm until the user cancels it from Event Report dialog. Alarm Stop after Second: Once event was triggered, it would automatically stop alarm after setting seconds.
- **Event Detect Period:** Always Detect: When Alarm Monitor is activated, the detection job will always execute. Detect by Schedule: The detection job will execute when Alarm Monitor is activated and match the schedule setting.

 **Note:**

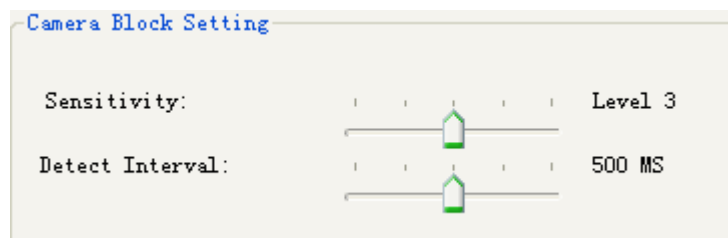
The System accepts maximum 10 detection schedule settings.

- **Event Setting/ Edit Event / Advance Setting/ Motion:**



- **Define motion detection area:** Click **Default** to select all images for motion detection. Select **Add** and use mouse to specify a rectangle window to add a detection area. Select **Delete** and use mouse to specify a rectangle window to remove a detection area. The area covered by transparent red color is motion detection area.
- **Set motion detection sensitivity:** Set the motion detection sensitivity level between 1 and 5. Level 5 means the highest motion detection sensitivity.
- **Set detection interval:** Set this value to define the interval of motion detection. If set longer value, means system will use less CPU computing power to check motion detection.
- **Adjust parameter by detection result:** When motion detection event is triggered, system will display "M" at left-up corner and you can adjust these two parameters by checking detection result to get best settings.

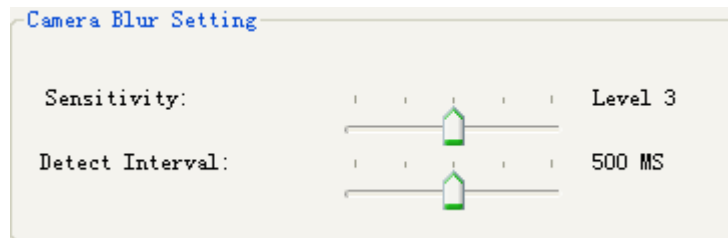
➤ **Event Setting/ Edit Event / Advance Setting/ Block Detect:**



- Block detection could detect camera is blocked by something, detect area is set to full image.
- Set Sensitivity with higher level to trigger block alarm easier, otherwise set lower level to

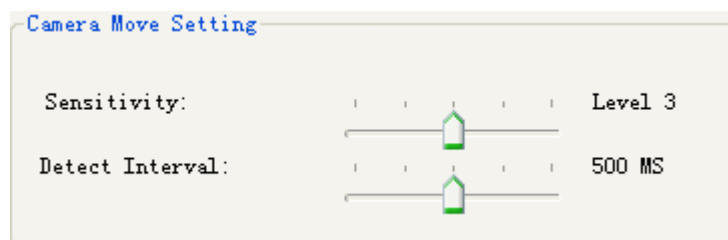
prevent false alarm.

➤ **Event Setting/ Edit Event / Advance Setting/ Blur Detect:**



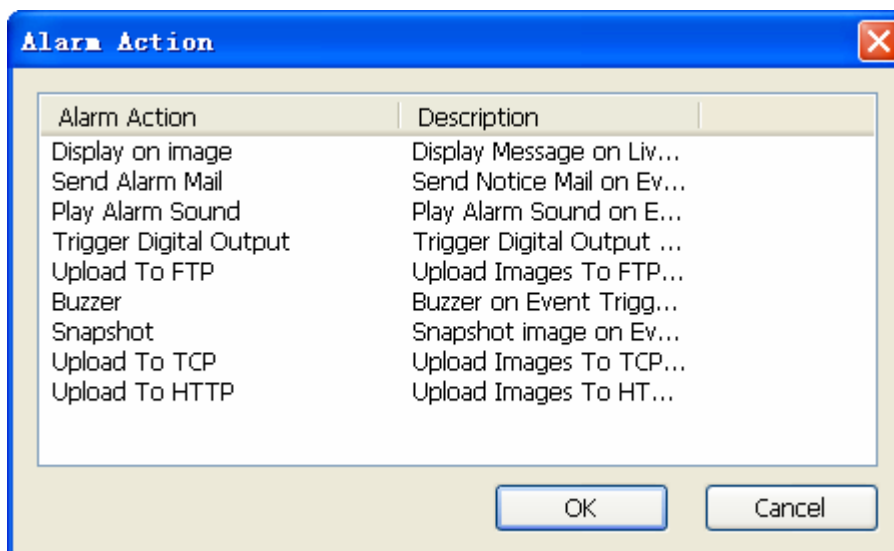
- Blur detection could detect image lost focus (blur), detect area is set to full image.
- Set Sensitivity with higher level to trigger blur alarm easier, otherwise set lower level to prevent false alarm.

➤ **Event Setting/ Edit Event / Advance Setting/ Camera Move Detect:**



- Camera move detection could detect camera direction is moved, detect area is set to full image.
- Set Sensitivity with higher level to trigger camera move alarm easier, otherwise set lower level to prevent false alarm.

➤ **Event Setting/ Edit Action:** Select an action from the Action list then click **Edit** or double-click on the action to enter action setting dialog.

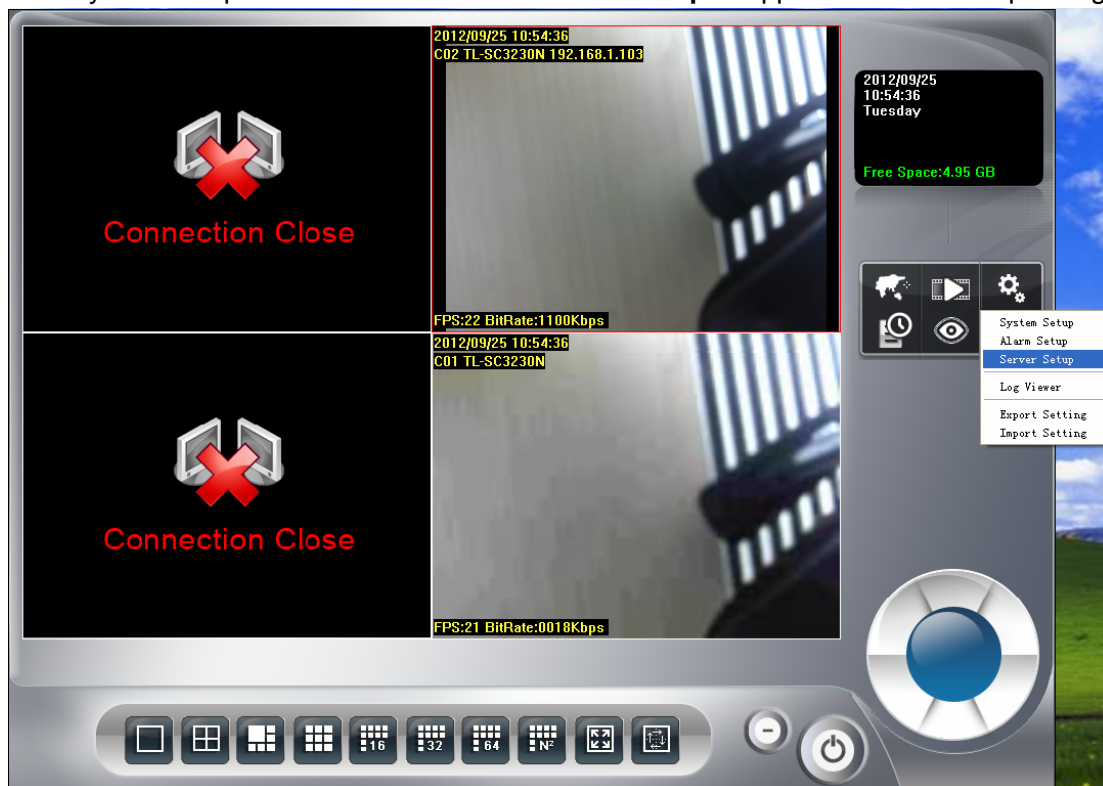


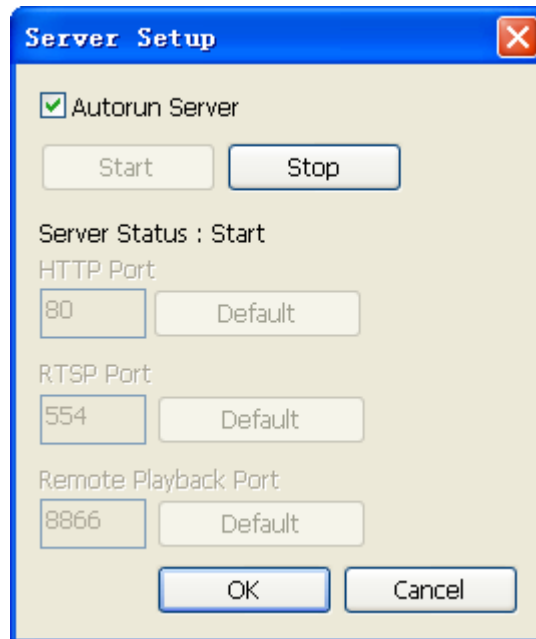
- **Display on image:** Select the channels which you want to display alarm message when event is triggered. The default selected channel is the event detection channel.
- **Send Alarm Mail:** Select the mail accounts which you want to send a notice mail when event is triggered. Mail account list is set by system / address book page.
- **Play Alarm sound:** Select a Wav file to play once event was triggered.

- **Trigger Digital Output:** Select a digital output which you want to take an action once event was triggered.
- **Upload To FTP:** When event is triggered, system will upload images by setting in system setup page.
- **Event Setting / Delete Action:** Select an action which you want to delete, and then click **Delete** to remove this action.
- **Event Setting / Clone Event setting:** Select an event and click **Copy** or pop-up menu, and then select the camera you need clone the settings to, click **Paste** to paste on target.
- You can apply copied setting to all cameras by click Apply all.

4.6 Server Setup

Click system setup  button and select **Server Setup** to approach server setup dialog.





- **Autorun Server:** Once **Autorun Server** is checked, the remote service will start automatically while Surveillance Manager is running.
- **Start Server:** Click **Start** to start the remote service which the HTTP and RTSP service will start working.
- **Stop Server:** Click **Stop** to stop the remote service which the HTTP and RTSP service will stop working.
- **HTTP Port:** In case you need to change HTTP port, please stop remote service first and then enter new port value. The default HTTP port is 80.
- **RTSP Port:** If you need to change RTSP port, please stop remote service first and then enter new port value. The default RTSP port is 554.
- **Remote Playback Port:** If you need to change Remote playback port, please stop remote service first and then enter new port value.

4.7 Log Viewer

Click system setup  button and select **Log Viewer** to approach Log Viewer dialog.



Log Viewer

System Log | Event Log | Error Log

Log Type: Total

Time: 2012/09/25 00:00:00 ~ 2012/09/25 23:59:59 | Limit Record: 100 | Search

Time	Log Type	Remark
2012-09-25 08:19:20.671	System Initialization	
2012-09-25 08:19:20.718	Restore	
2012-09-25 08:19:36.859	Remote Playback Serv...	
2012-09-25 08:19:37.218	RTSP Server Start	
2012-09-25 08:19:37.656	HTTP Server Start	
2012-09-25 08:19:38.546	Get Connection	Cam2, admin
2012-09-25 08:19:38.546	Get Connection	Cam1, admin
2012-09-25 08:20:12.421	Minimize	admin
2012-09-25 09:12:09.250	Restore	admin
2012-09-25 09:12:12.796	Enter Alarm Schedule...	admin
2012-09-25 09:12:47.671	Lost Connection	Cam2, admin
2012-09-25 09:12:47.671	Lost Connection	Cam1, admin
2012-09-25 09:13:10.671	Get Connection	Cam2, admin
2012-09-25 09:13:10.671	Get Connection	Cam1, admin
2012-09-25 09:14:11.625	Lost Connection	Cam2, admin
2012-09-25 09:14:11.625	Lost Connection	Cam1, admin
2012-09-25 09:20:48.858	Get Connection	Cam1, admin
2012-09-25 09:20:48.858	Get Connection	Cam2, admin
2012-09-25 09:21:38.890	Lost Connection	Cam1, admin
2012-09-25 09:21:38.890	Lost Connection	Cam2, admin
2012-09-25 09:22:01.890	Get Connection	Cam1, admin
2012-09-25 09:22:01.890	Get Connection	Cam2, admin
2012-09-25 09:23:08.265	Lost Connection	Cam1, admin
2012-09-25 09:23:08.265	Lost Connection	Cam2, admin
2012-09-25 09:36:24.093	Exit Alarm Schedule ...	CANCEL:admin
2012-09-25 09:48:06.265	Enter Alarm Schedule...	admin
2012-09-25 09:50:40.984	Get Connection	Cam1, admin
2012-09-25 09:50:41.796	Get Connection	Cam2, admin
2012-09-25 10:04:50.328	Exit Alarm Schedule ...	CANCEL:admin
2012-09-25 10:05:33.718	Enter Alarm Schedule...	admin
2012-09-25 10:06:16.000	Exit Alarm Schedule ...	CANCEL:admin
2012-09-25 10:07:01.656	Enter Alarm Schedule...	admin
2012-09-25 10:53:53.359	Exit Alarm Schedule ...	CANCEL:admin

Export

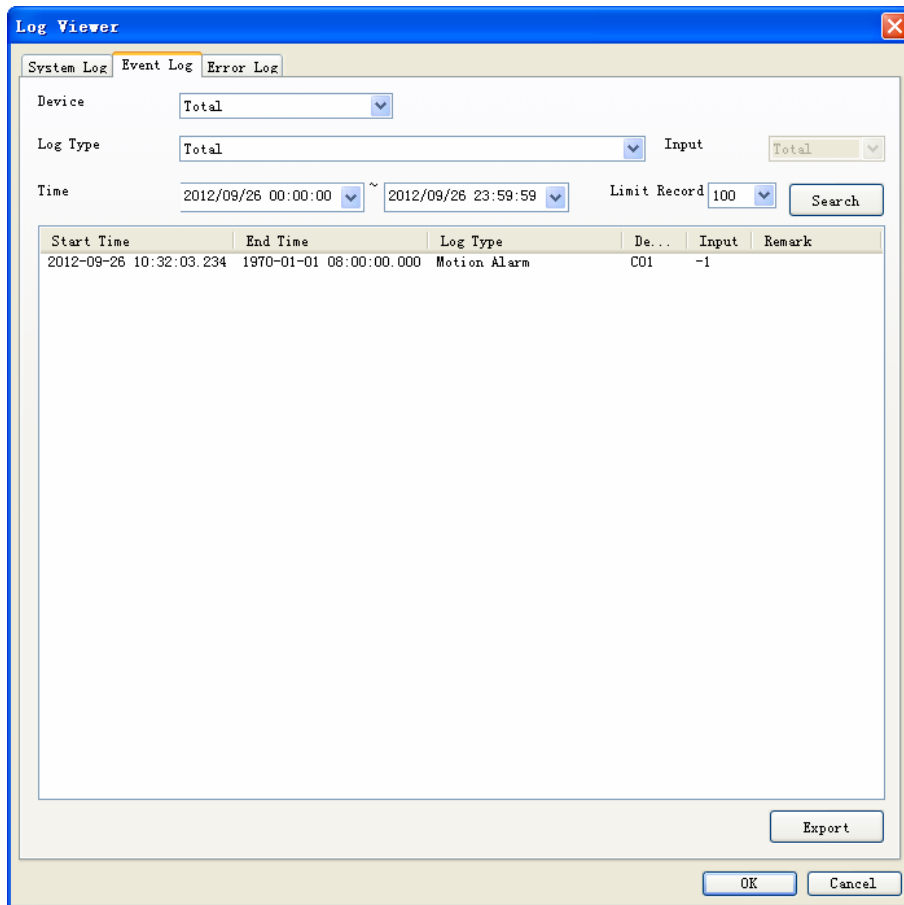
OK Cancel

➤ **System Log page:**

1. Select Log Type
2. Select Log time period.

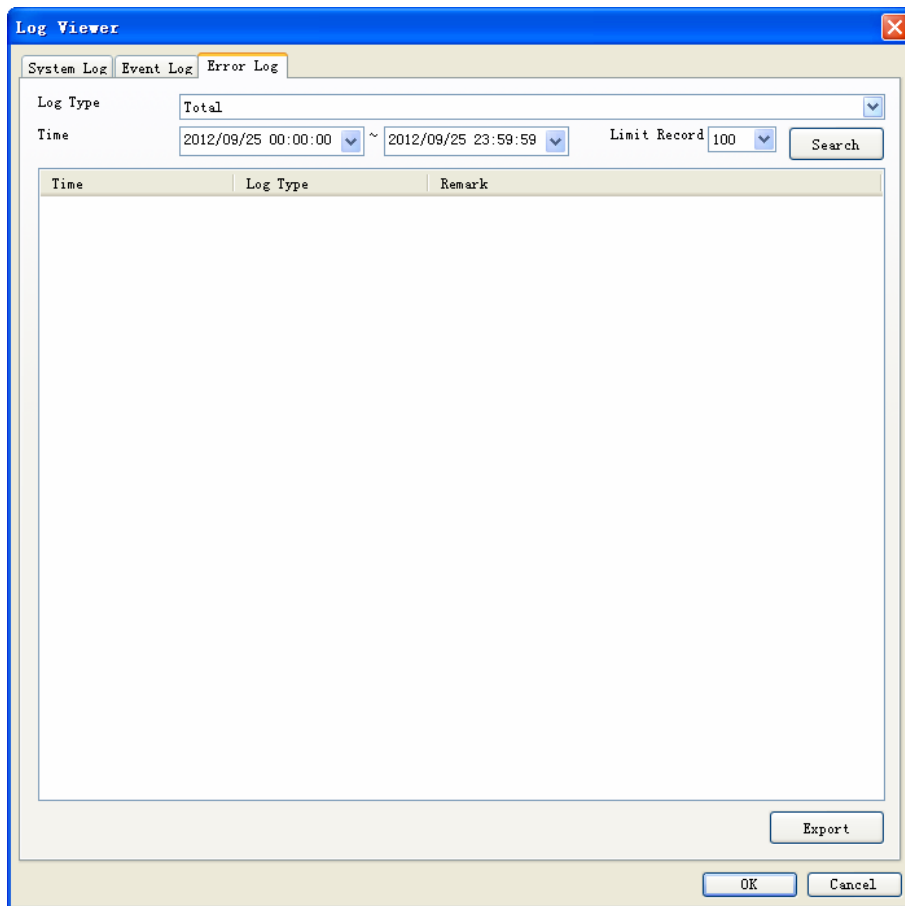
3. Click **Search** to list Logs.
4. Click **Export** to export search result to TXT file.

➤ **Event Log page:**



1. Select the device to display the event triggered or list all.
2. Select event type or list all.
3. Select the input source that triggered the event (Digital Input Event).
4. Specify search time period.
5. Click **Search** to list event logs.
6. Click **Export** to export search result to TXT file.
7. Double click on the event log record, the system will bring up a playback window, and playback 10 second record video (pre-alarm 5 second, post-alarm 5 second). Please note that playback job must wait for record file closed.

➤ **Error Log page:**



1. Select Log Type.
2. Specify Log time period.
3. Click **Search** to list Logs.
4. Click **Export** to export search result to TXT file.


4.8 Import / Export Setting

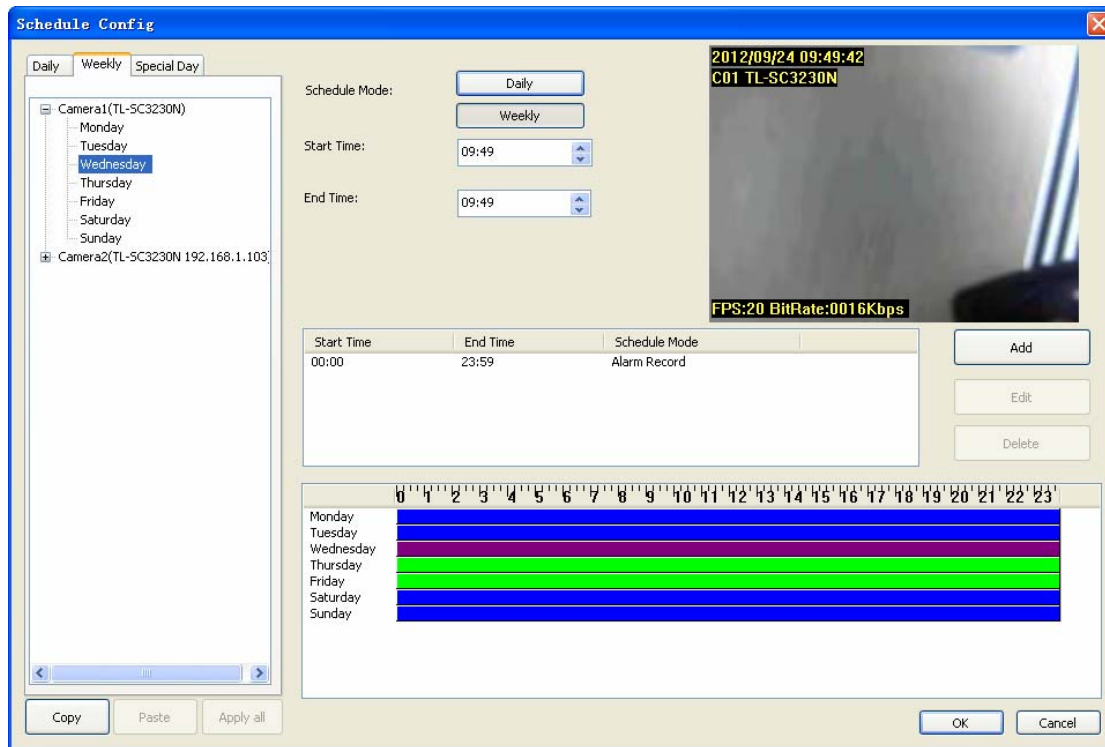


- **Import Setting:** Select a history export setting file by open file dialog and click **OK**, and the system will restore setting by selected file.
- **Export Setting:** Select a file from save file dialog and click **OK**, the system will create a setting file to destination folder.

4.9 Schedule setup

4.9.1 Schedule Setup

Click schedule setup  button to approach Schedule setup dialog.



- **Schedule mode:** Select the schedule mode of system. The Daily and Weekly mode is exclusive to each other. Daily mode: Set schedule time slice by day. Weekly mode: Set schedule time slice by weekday.
- **Select camera of Daily mode:** When you choose Daily mode or click on “Daily” tab of camera list tree, the list tree will display all installed cameras of system. Click on the camera name which you want to modify. The schedule configuration of this camera will display at left of dialog. System defaults the schedule from 00:00 to 23:59 round the clock recording mode. The user could modify it for your own schedule.

Clone setting:

1. Select one camera and click **Copy** to copy camera’s schedule setting.
2. Select a camera and click **Paste** to update schedule setting with copied data.
3. Click **Apply all** to update all cameras with copied setting.

 **Note:**

You can right-click on camera to bring up pop-up menu, and clone settings as above.

- **Select weekday of Weekly mode:** When you choose Weekly mode or click on “Weekly” tab of camera list tree, the list tree will display all installed cameras of system. Click on the camera name which you want to modify. The schedule configuration of this camera will display at left of dialog. System defaults the schedule from 00:00 to 23:59 round the clock recording setting. The user could modify it for your own schedule

Clone Setting (copy setting from a camera):

1. Select a camera and click **Copy** to copy selected all weekday schedule setting.
2. Click **Paste** and select **Paste** will update selected camera all weekday’s schedule setting.
3. Click **Paste** and select **Paste on Monday to Friday** will update selected camera’s Monday to Friday schedule setting as same as copied Monday to Friday setting.
4. Click **Paste** and select **Paste on Saturday to Sunday** will update selected camera’s Saturday and Sunday setting as same as copied Saturday and Sunday setting.
5. If select a weekday , and Click **Paste**, then select **Paste to all camera on Selected Weekday** will update all camera’s selected weekday setting as same as copied camera weekday.
6. Click **Apply all** to update all camera’s setting as same as copied camera.

Clone Setting (copy setting from a weekday):

1. Select a weekday of one camera and click **Copy** to copy selected weekday schedule setting.
2. Select a camera and click **Paste**, select **Paste** on pop-up menu will update same weekday’s setting of selected camera.
3. Select a weekday of camera, click **Paste** and select **Paste** on pop-up menu will update selected weekday’s setting from copied data.
4. Click **Paste** and select **Paste on Monday to Friday** will update selected camera’s Monday to Friday schedule setting as same as copied Weekday setting.
5. Click **Paste** and select **Paste on Saturday to Sunday** will update selected camera’s Saturday and Sunday setting as same as copied Weekday setting.
6. If select a weekday , and Click **Paste** , then select **Paste to all camera on Selected Weekday** will update all camera’s selected weekday setting as same as copied camera weekday.
7. Click **Apply all** to update all camera’s all weekday settings as same as copied Weekday.

- **Select camera of special day mode:** When you choose “Special Day mode” or click “Special Day” tab of camera list tree, the list tree will display all installed cameras of system. Click on the camera name which you want to modify. The schedule configuration of this camera will display at left of dialog. System defaults the schedule from 00:00 to 23:59 round the clock recording setting. The user could modify it for your own schedule

Clone Setting:

1. Select one date or camera and click **Copy**.
 2. If you want to copy setting from a date, click **Paste** will update all cameras of selected target date by copied setting.
 3. If you want to copy setting from a camera of some special date, click **Paste** with selected a date to update the camera schedule setting.
 4. Copy a camera schedule setting and paste to another camera by click **Paste** with selected a camera.
- **Add or remove special day:** If you want to add a new special day into system, choose a day from date-time picker control, then click **Add**. If you want to remove a special day from system, click the special day on the tree control at right of dialog, then click **Delete**.

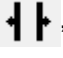
- **Add schedule time slice:** You can define a time slice as below:

1. Select Start time and End time from date-time picker control: Click on the hour section or

minute section, then key in the time value, or click the “▲” or “▼” to increase or decrease the time value.

2. Drag time slice bar from time table: Move mouse cursor to the empty zone on time table in which you want to add. Press and hold mouse left button, drag cursor to right until touch the End time which you need, then release the left button of mouse.
3. After drag action, a new gray bar is show on the time table. The left end of the time bar means this slice’s Begin time and right end means End time. Note that the mouse cursor must drag on empty zone, or this action will be not successful.
4. After time slice define is completed, the system will pop up the “Record Setup” dialog. Please refer to “**Record Setup Page**” as below.

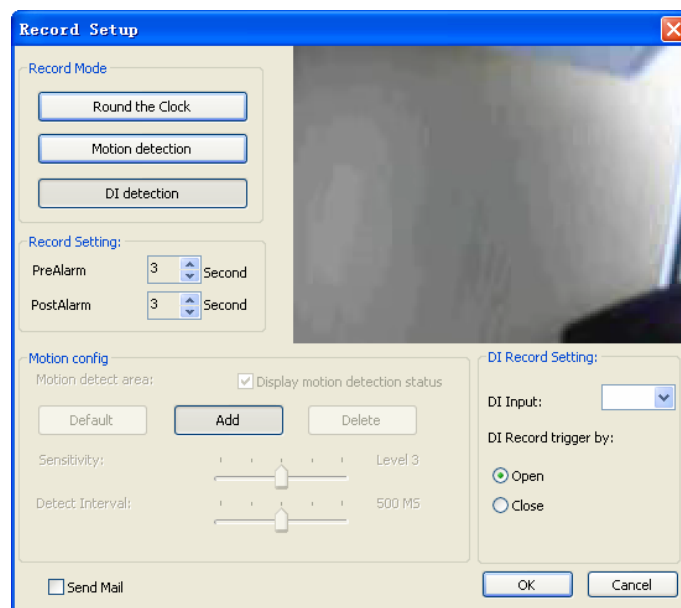
➤ **Modify schedule time slice:**

1. Selected the Camera’s name (daily mode) or weekday (weekly mode) from the tree control at left of dialog.
2. Click on the slice in the list which you want to modify. The other way, you can click on the slice bar on the time bar control.
3. Click on the hour section or minute section on the date-time picker control, then enter the time value, or click the “▲” or “▼” to increase or decrease the time value. Or you can move mouse cursor to edge of slice bar on time bar control, then the cursor will become to “”, and drag the edge to the position where you need.
4. After complete the time slice, click **Edit** to approach “Record Setup” dialog.

➤ **Remove schedule time slice:**

1. Select the Camera’s name (daily mode) or weekday (weekly mode) from the tree control at left of dialog.
2. Click on the time slice in the list which you want to modify. The other way, you can click on the time slice bar on the time bar control
3. Click the “Delete” button at right of dialog.

4.9.2 Record Setup



➤ **Record Mode:**

- **Round the Clock:** When system time reach the schedule begin time, system will start recording work immediately and continually until the system time reach the end time.

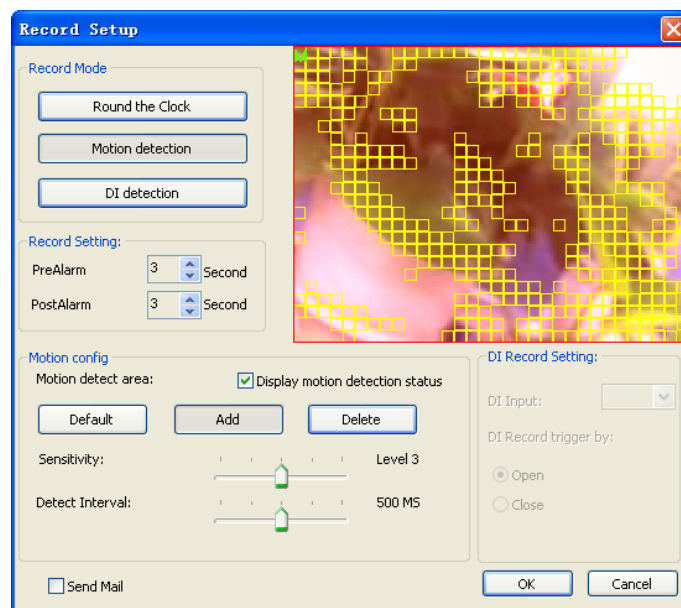
- **Motion detection:** When system time reach the schedule begin time and motion alarm is triggered, system will start recording work immediately and continually until the system time is over the post-alarm seconds.
- **DI Detection:** When system time reach the schedule begin time and DI alarm is triggered, system will start recording work immediately and continually until the system time is over the post-alarm seconds. If the pre-alarm seconds is set, when motion detection has been triggered, the recorded file will include pre-alarm seconds by setting.

➤ **Record Setting:**

- **PreAlarm:** When set to Motion detection or DI detection record mode, the user can set the Pre-Alarm second(s) which the recorded file will keep a slice of image defined as the setting second(s) before event was triggered.
- **PostAlarm:** Set the Post-Alarm second(s) which the recorded file will keep a slice of image defined as the setting second(s) after the event was triggered.

➤ **Motion Config:**

- **Default:** Select the full image for motion detection.
- **Add:** Define a rectangle area on the image first, and then click **Add** to add a new region.
- **Delete:** Define a rectangle area on the image first, and then click Delete to remove the region that was defined.
- **Sensitivity:** Set sensitivity level of motion detection. Level 5 means the highest motion detection sensitivity. On the contrary, level 1 is the lowest level of sensitivity.
- **Motion Interval:** Set this value to define the interval of motion detection. If set longer value, means system will use less CPU computing power to check motion detection.
- **Display Motion detection status:** Check the check box to display the area(s) where motion detection is triggered.
- **Preview window:** Red area is the motion detection area. The other areas are non-motion detection region. The yellow rectangles are triggered regions of motion detection areas.



- **DI Record Setting:** When you set the DI record mode, select the DI input from the combo box,

and select the DI as open or close to trigger recording.

To finish configuration job of schedule setting, click **OK** to confirm. If you want to abort this setting, please click **Cancel** instead.

When you set the DI record mode, select the DI input from the combo box, and select the DI as open or close to trigger recording.

4.10 Start & Stop Monitor

Click Start & Stop Monitor  button to control system monitor job.

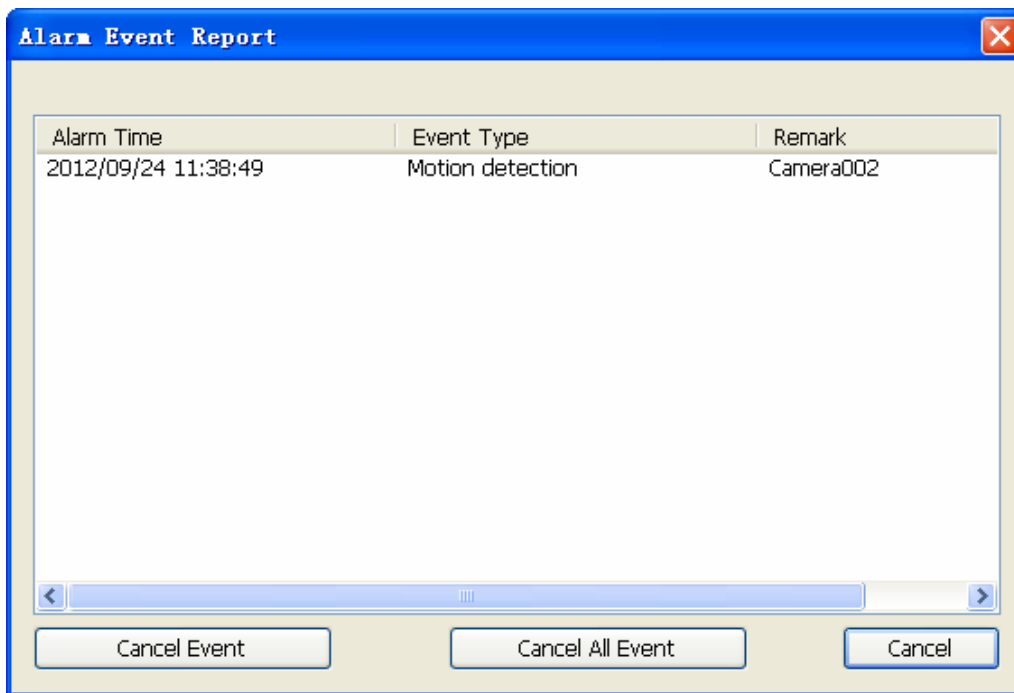


- **Start Monitor All:** Check it to start all type of monitor job.
- **Start Monitor Schedule:** Check it to start the schedule monitor job.
- **Start Monitor Alarm:** Check it to start the Alarm monitor job.

 **Note:**


If **Start Monitor All** is check, system will execute all monitor jobs automatically.

- **Alarm Event Report:** Alarm Event Report dialog displays all triggered events and those were not stopped or canceled events.

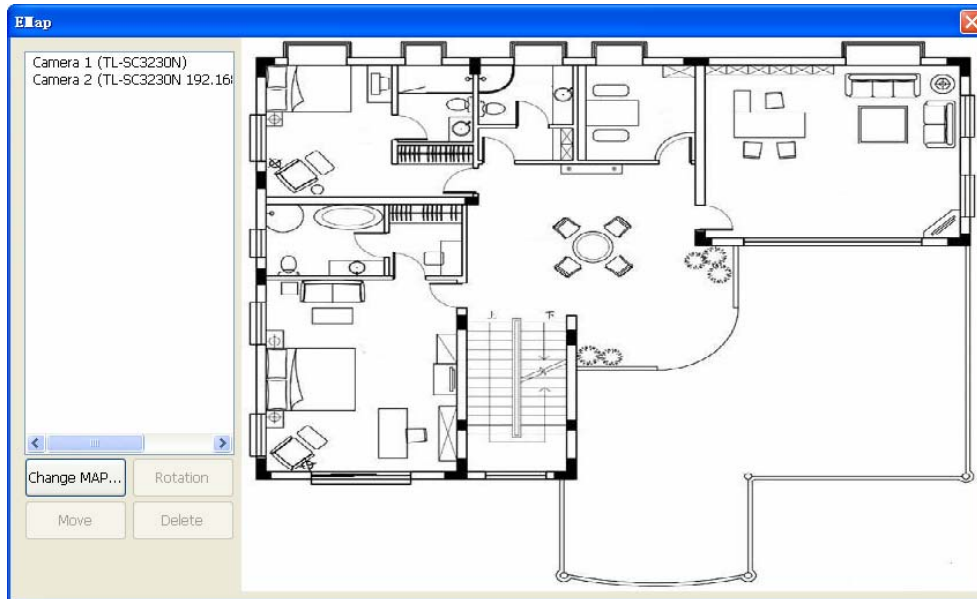


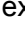
- **Alarm time:** The triggered time of this event.
- **Event Type:** The trigger type of this event.
- **Remark:** The description of this event.
- **Cancel Event:** Select the events and click **Cancel Event** to stop alarm actions, and reset event status.
- **Cancel All Event:** Stop all event action and reset all event status.

4.11 E-Map

Click E-MAP  button to approach E-MAP dialog.





- **Camera list:** List all installed camera(s) in system by camera index and name.
- **Add camera to Map:** Drag a camera name from camera list onto the Map. If the dragging camera has already existed in Map, the cursor will become to  and will not allow you to add this camera.
- **Make camera as a focus camera:** Double click on the camera icon which you want this camera be focused. When the camera is focused, the system will pop up a window to display live preview of this camera.
- **Move camera on Map:** You can move the camera position by two ways as below.
 1. Select the camera icon which you want to move, and then drag it onto the position where you prefer.
 2. Double click on the camera, make it as a focus camera, and then click **Move**. Move the mouse cursor to the new position and click the left button of the mouse.
- **Rotate camera on Map:** You can rotate camera direction by two ways as below.
 1. Right-click on the camera icon, then rotate the camera icon until you prefer.
 2. Make camera as a focus camera, then click **Rotation** until you prefer.
- **Delete camera on Map:** Make the camera as a focus camera, then click **Delete**.
- **Change Map:** Click **Change Map**, and then select a new picture to replace the old one.

4.12 Two way Audio

Click Two way Audio button to switch Two-way Audio status.



When Two-way audio is on, system will transmit local microphone's voice to remote camera.



Start Two way Audio.



Stop Two way Audio.

Two-way Audio function depends on camera's capability. This button is only enabled when the focused camera is with two-way audio capability.

If the channel's two way audio was enabled by remote service , system will reject enable this channel's two way audio job until remote's two way audio job stop.

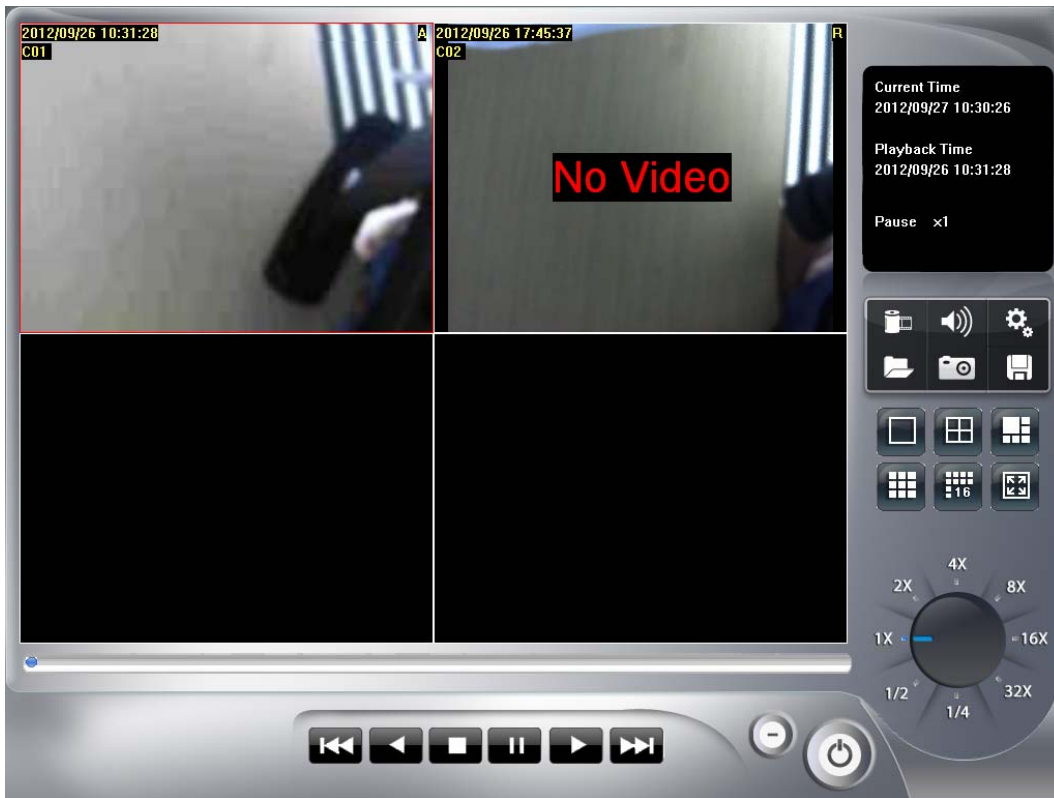
Chapter 5 Playback


Playback is to search, playback, backup, and converts file format on history recorded file(s).

The user could find out the critical image in minutes by playback tools, and back up these images to the user assigned storage by selected period and length.


Click the playback  button to launch playback panel.

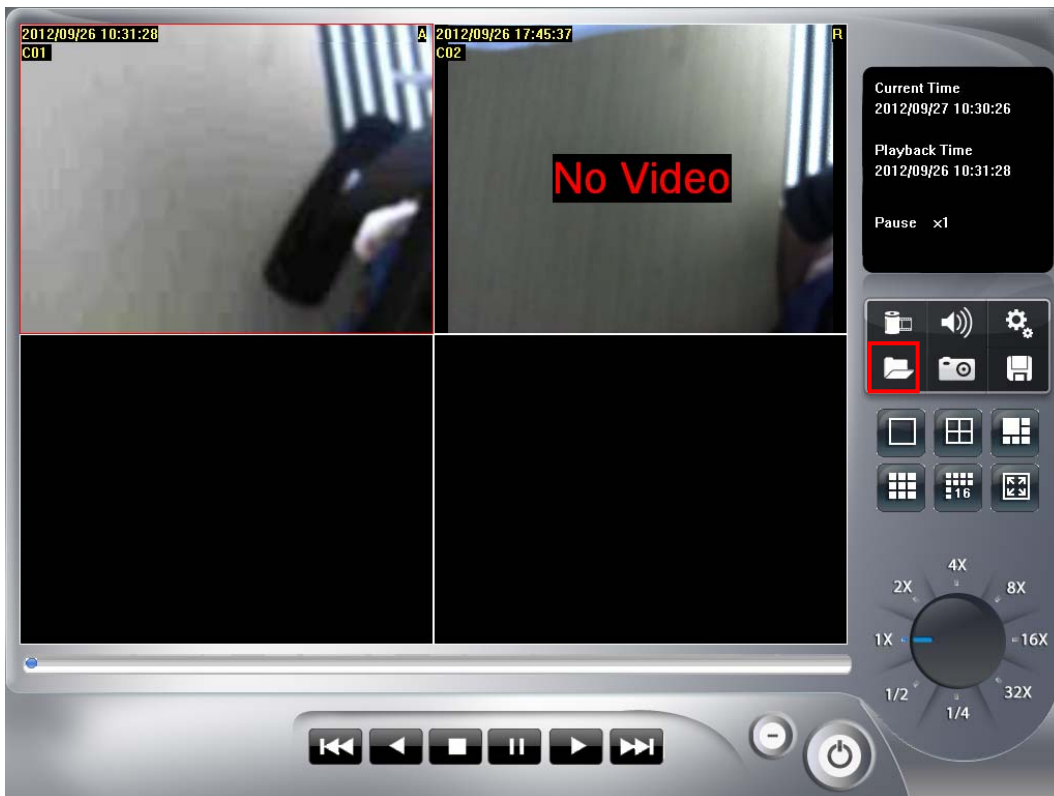


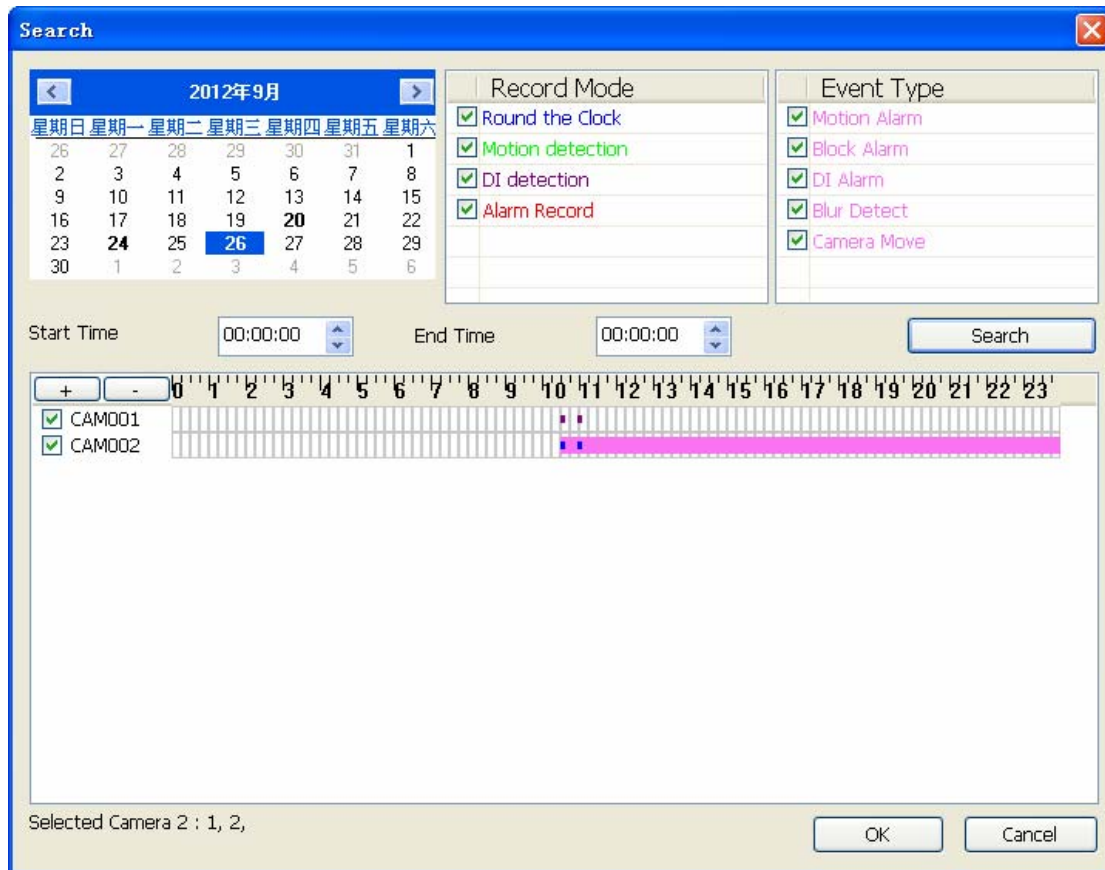


Click exit button  to leave playback application.

5.1 Search history recorded file(s)

Click the search  button on Playback page and the Search history file(s) dialog will display.







Select the time period and camera(s) within the search dialog.


➤ **Select a day to search history file(s):**



- Click ,  buttons to select the month which you want to search history file(s).
- Click on the date to choose a day to search.

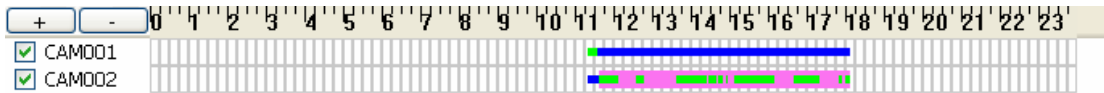
➤ **Select record mode(s) / Event Type:**

- Check the modes which you want to search. System will search recorded files within these modes only.
- Check Event types which you want to display, system will display event triggered time on list.

You could define display color for each record modes and events by color select dialog. Click  button to approach color select dialog.

➤ **Start search:** Click **Search** to start search procedure. Please wait a moment for the search result which will appear on the list control.

- **Review history record file(s) in search period:** The list control will display the result of search procedure.



- **Blue section:** Round the clock recorded file(s).
- **Green section:** Motion detection recorded file(s).
- **Red section:** Alarm recorded file(s).

- **Assign time period of search result:**

1. You can drag mouse cursor on the list control to assign a time period to playback.
2. Choose a time period by the start time and end time picker control manually.







The selected time period will display as blue section on the list control.

- **Select the camera(s) to playback:** Select the camera(s) which you want to playback. The system can select maximum 16 camera(s) to playback at once.

Click **OK** to finish search procedure and start playback, or click **Cancel** to abort this job and return to Playback main page.

5.2 Playback control button(s)

These buttons are used to control playback start, pause, backward play and the other operations. The user can control playback functions by these buttons.

- **Play button** : Click play button to play the selected history file(s).
- **Pause button** : Click pause button to pause playback stream. Some operations must enter pause mode first.
- **Backward play button** : Click backward play button to playback stream direction to backward mode.
- **Stop button** : Click stop button to stop playback stream and return to the beginning position of stream.
- **Next frame button** : When playback is in the pause mode, click the next frame button to seek next frame.
- **Previous frame button** : When playback is in the pause mode, click the previous frame button to seek previous frame.

- **Playback speed control** : Turn the speed button to select playback speed.

1X: Normal speed.

2X: Double of normal speed

4X: 4X normal speed.

8X: 8X normal speed.

16X: 16X normal speed.

32X: 32X normal speed.

1/2X: Half of normal speed.

1/4X: Quarter of normal speed.

➤ **Division control buttons:**



Divide to 1 screen.



Divide to 4 screen(s).



Divide to 6 screen(s).



Divide to 9 screen(s).



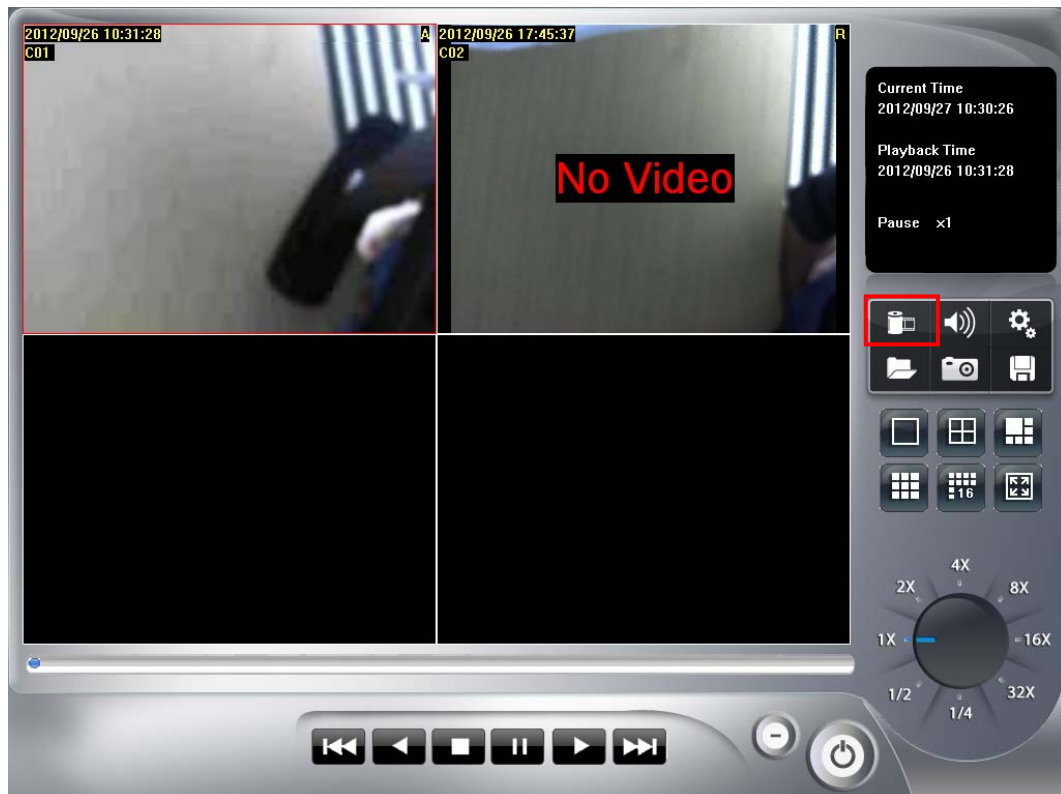
Divide to 16 Screen(s)

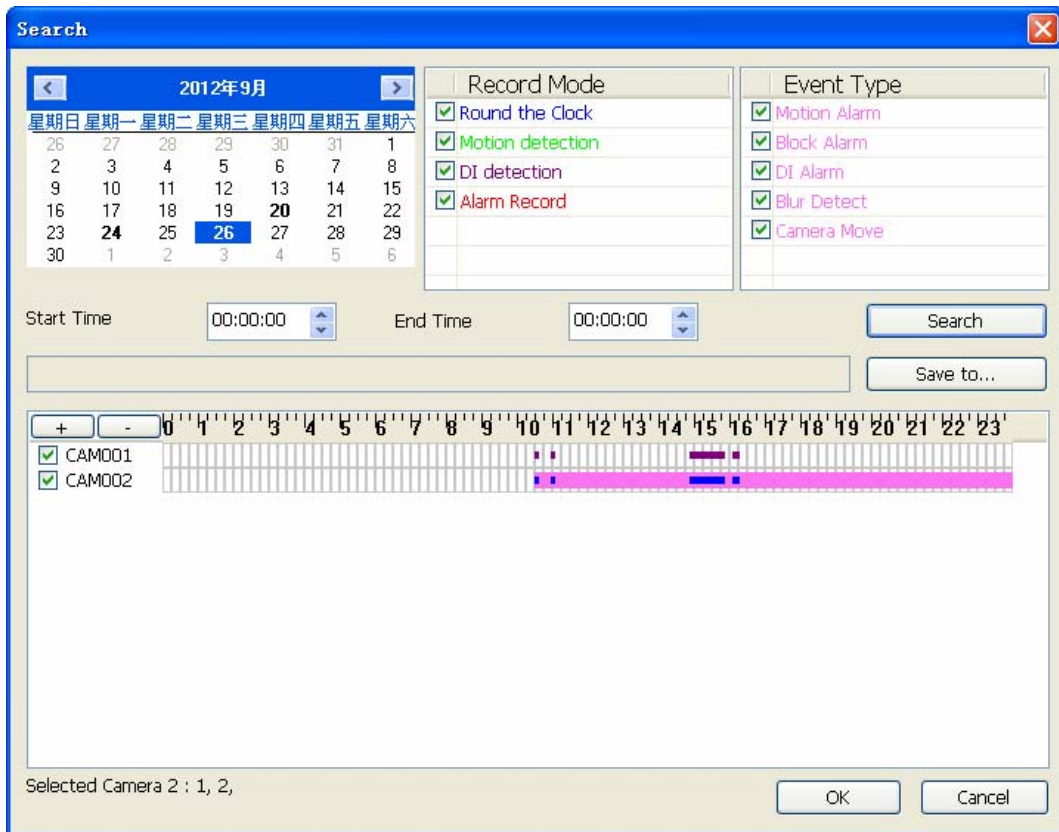


Full screen mode.

5.3 Convert to AVI file



Click Convert file button  to approach Covert file dialog.

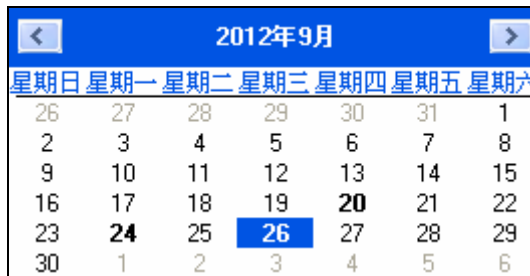




Select time slice and camera to convert to AVI file by the convert file dialog. The AVI file can play on most PC with current codec installed.

➤ **Select a day to convert history file(s):**

- Click  ,  buttons to select the month that you want to convert history file(s).



- Click on the date to choose a day to convert file(s).
- **Assign time slice to convert job:** Choose a time slice by the Start time and End time picker control, or drag mouse cursor on record list to define convert period.
- **Select cameras to convert job:** Check camera's IDs from list to convert job.
- **Select a folder to save converted file:** Click the brows button to select a folder which will save the converted file.
- **Start converting job:** Click **OK** to start convert job. When convert job is finished, the system will generate a file into assigned folder. Click **Cancel** to abort convert job.

The name rule of converted file is as below:

CHXXXXYYYYMMDDHHmmssnnn.avi

XXX: camera ID.

YYYY: Execute convert year.

MM: Execute convert month.

DD: Execute convert day.

HH: Execute convert hour.

mm: Execute convert minute.

ss: Execute convert second.

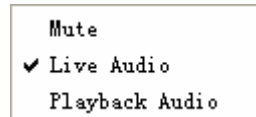
nnn: Execute convert million-second.

For example:

CH00220090914140253150.avi

5.4 Switch audio play mode

Click audio mode button  to pop up the menu of audio mode.

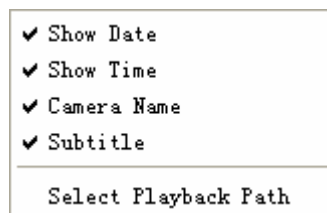


Select the audio mode from the popup menu. The check item means the current mode of audio playback now.

- **Mute:** No audio data will play.
- **Live Audio:** Play the live audio stream.
- **Playback Audio:** Play the playback audio stream.

5.5 Playback setting


Click the Setting button  to pop up the menu of playback setting.



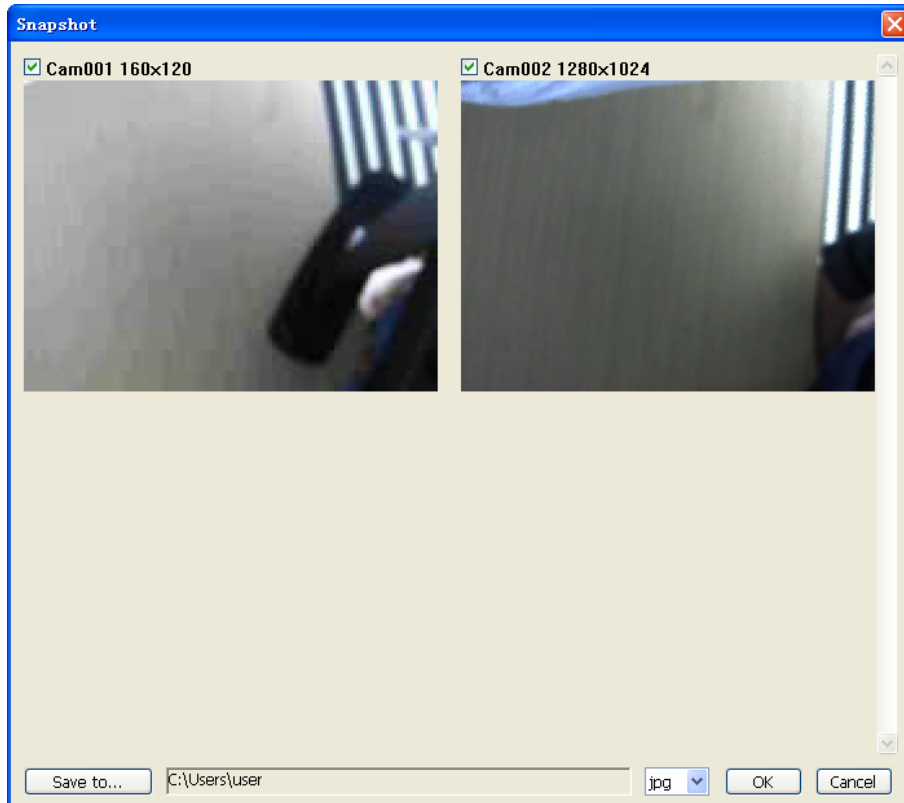
Check the item(s) to change OSD status on the image while the recorded file is playing back.

- **Display Date:** Display the date of recorded file on the image.
- **Display Time:** Display the time of recorded file on the image.
- **Display camera name:** Display the camera name on the image.

5.6 Snapshot dialog

Click the snapshot button  to approach snapshot dialog. This function is used to take a snapshot of the playing history file.

The snapshot all dialog will display all snapshot images on the dialog. You can choose which image will be saved and assign the file format and folder.



- **Select snapshot image:** The dialog displays all snapshot images with the camera ID, resolution, and camera name. Check the check box if you want to save this image.
- **Select snapshot folder:** Click the **Save to** button to select a folder to save snapshot images.
- **Select file format:** Select the image file format in the combo box.
- **Save snapshot images:** Click **OK** to save all selected images or click **Cancel** to abort this snapshot job.
- **Saved image file name:**

The name rule of saved file is as below:

CamXXX_NNNNNN_YYYYMMDDHHmmssnnn.jpg

XXX: camera ID.

NNNN: camera name.

YYYY: The image's year of date.

MM: The image's month of date.

DD: The image's day of date.

HH: The image's hour of time.


mm: The image's minute of time.

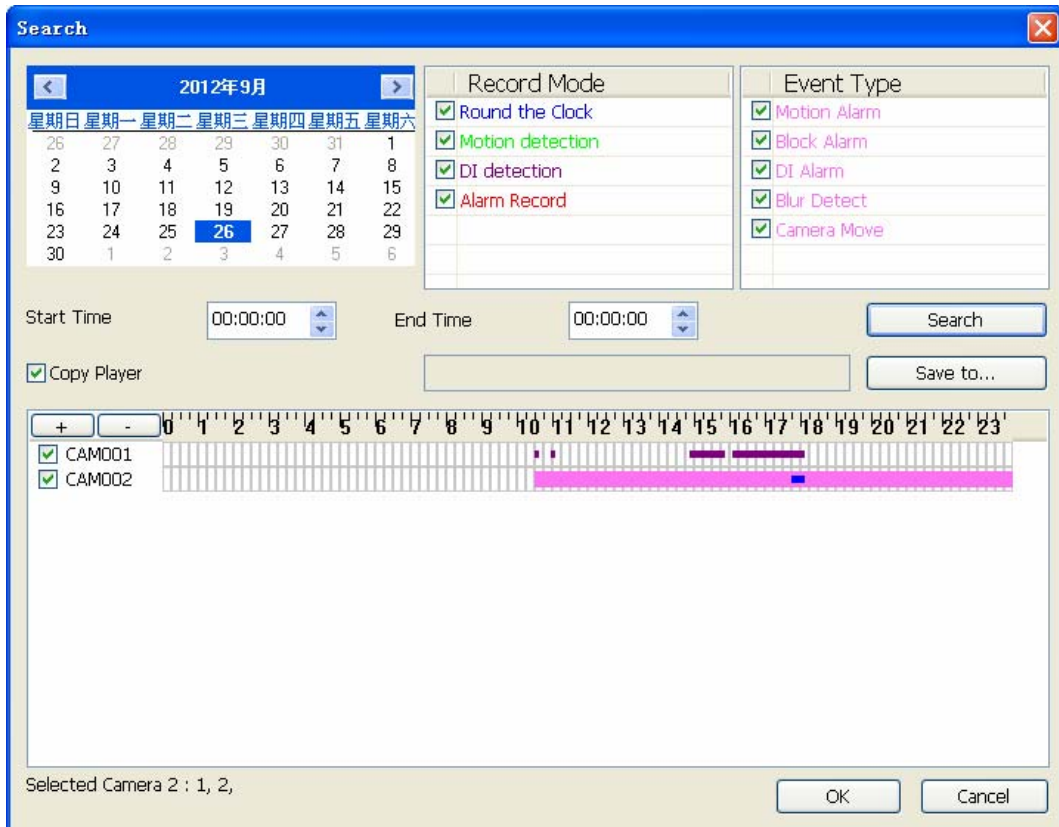
ss: The image's second of time.

nnn: The image's million-second of time.

For example:

5.7 Backup history file(s)

Click the backup button  to approach backup dialog to select backup file(s).

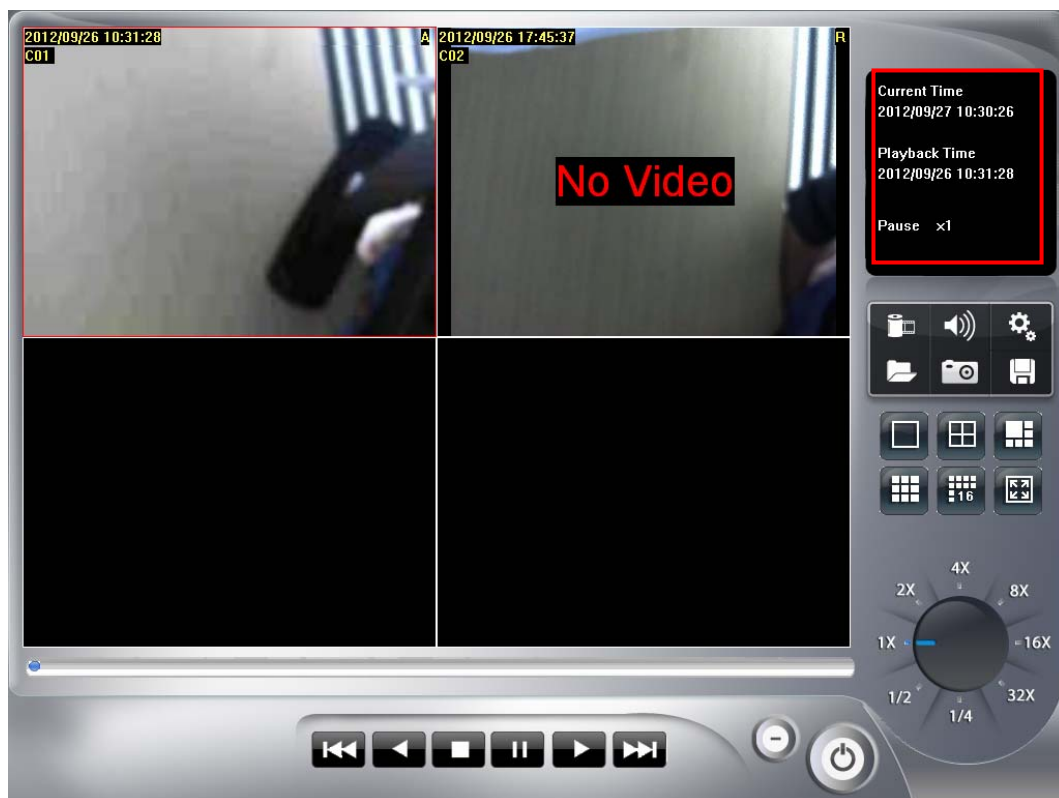


- **Select date and time of backup slice:** The select procedure is the same as selecting date and time of playback slice.
- **Select backup camera(s) and backup time period:** The select procedure is the same as selecting camera and time of playback slice.
- **Select output directory:** Click the **Save to** button to select the output directory. Click **OK** to start backup job or click **Cancel** to abort this backup job.
- **Playback backup files:** All related files and information are saved in backup folder. You can execute the Player.exe in backup directory. The operation procedure is the same as playback job.

👉 **Note:**

The backup files must place in the same directory or the playback job will be failed.

5.8 Playback status



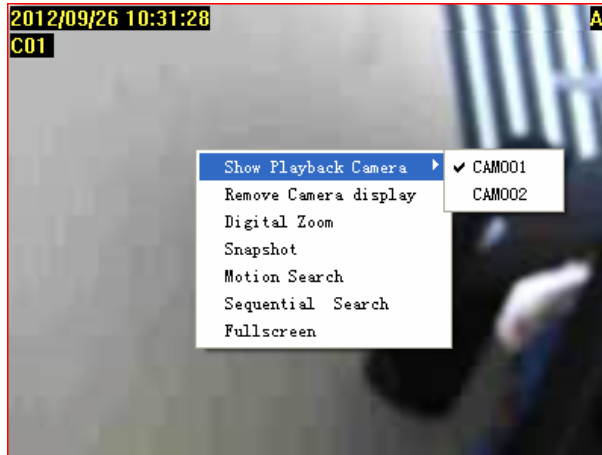
- **Current Time:** The system current time.
- **Playback Time:** The playing video time.
- **Playback status:** Displays playback status and speed.

5.9 Operation with sub-screen

5.9.1 Define display camera(s) sequence

1. To switch display sequence in sub-screen(s), press and hold mouse left button on source sub-screen, and then drag to target sub-screen and release mouse left button.

2. To switch current sub-window to another camera, right-click on the sub-screen, and then choose the preferred playback camera.



5.9.2 Digital Zoom at sub-screen

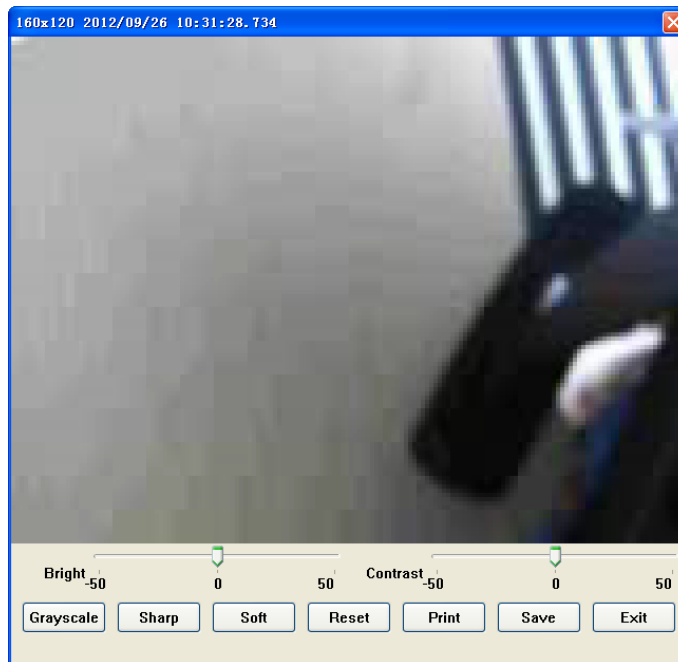
1. Right-click on sub-screen, and then check **Digital Zoom**.
2. Move mouse cursor to the position where you want to do digital zoom.
3. Move mouse wheel forward to zoom in the image.
4. Move mouse wheel backward to zoom out the image.
5. Press and click to drag the image at sub-screen to the position where you needed.
6. To cancel digital zoom mode, click mouse right button and un-check the Digital Zoom.

5.9.3 Switch to Full screen

1. Right-click and check Full screen on popup menu to switch Full screen mode.
2. Click "Esc" button or un-check "Full screen" on popup menu to return normal display mode.

5.9.4 Snapshot of sub-screen

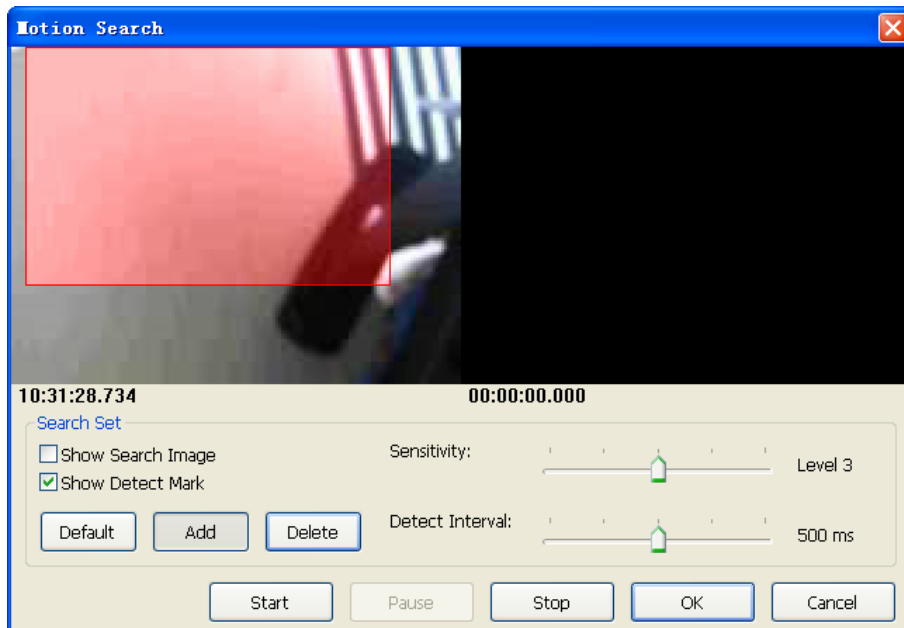
1. Right-click and choose Snapshot on popup menu.
2. Configure the image by Snapshot dialog.
3. Click Save button and choose the folder which you want to save the snapshot.



- **Bright:** 50 = Maximum brightness, -50 = Maximum dark
- **Contrast:** 50 = Maximum strong with Contrast, -50 = Minimum value of Contrast.
- **Grayscale:** Click to switch image to grayscale mode.
- **Sharp:** Click **Sharp** to increase image sharp level.
- **Soft:** Click **Soft** to increase image soft level.
- **Reset:** Click **Reset** to restore image to original image.
- **Print:** Click **Print** to print out image to printer.
- **Save:** Click **Save** and then choose folder and file name to save the snapshot.
- **Exit:** Close Snapshot dialog.

5.9.5 Motion Search

Right-click on the channel which you want to do motion search, and then select **Motion Search** from the popup menu.

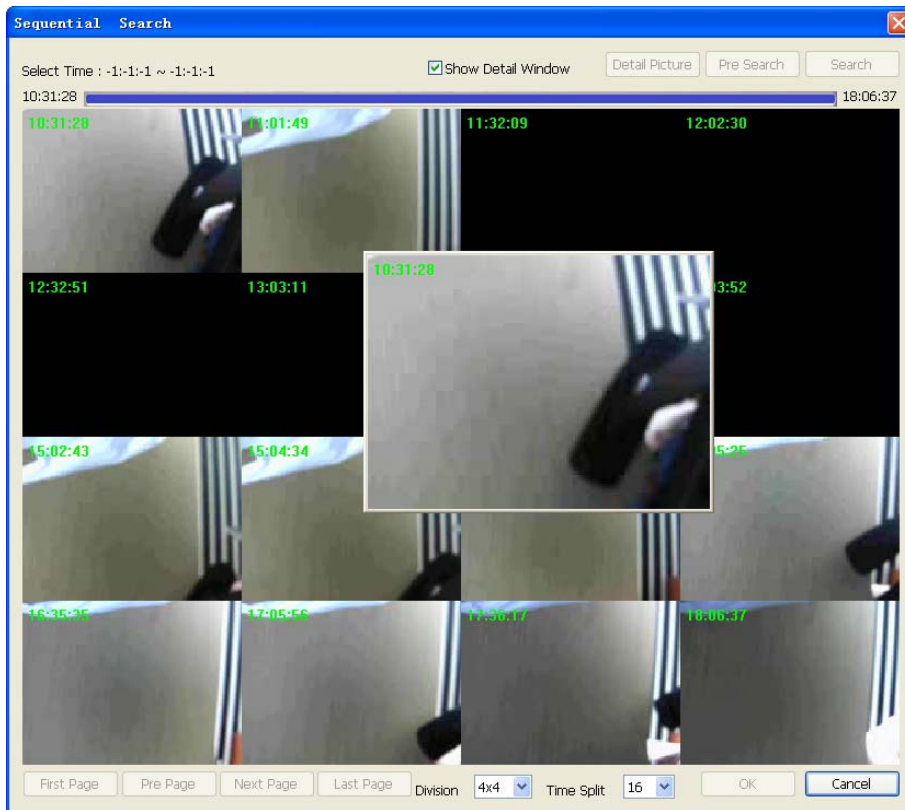


- **Add:** Click **Add** and drag a rectangle area where you want to check. The search area will overlay a transparent red mask.
- **Delete:** Click **Delete** and drag a rectangle area where you want to remove the region.
- **Default:** Click **Default** to select full image for motion detection.
- **Show Search Image:** Check **Show Search Image** to display the searching video sequence or un-check this box to only show the image once the event found.
- **Show Detect Mark:** Check **Show Detect Mark** to display the detect result on the image by pink rectangles.
- **Sensitivity:** Select **Sensitivity** to define the sensitivity of detection. The higher value means the event will be triggered easier.
- **Detect Interval:** Select **Detect Interval** to define the interval of motion detection. If set longer value, it means the system will use less CPU computing power to check motion detection.
- **Start / Continue:** When the event has been triggered, the window on the right side will display the triggered image. If the event is not matched your expectation, click the “Continue” button to search next event.
- **OK:** If you found the matched event, click **OK** to return to the playback panel, and all playing channels will be synchronized to the same timestamp of the event.
- **Cancel:** Click **Cancel** to abort this motion search job.

5.9.6 Sequential Search

Click mouse right button on the channel which you want to do sequential search, and then select **Sequential Search** from the popup menu.

Sequential Search Window:

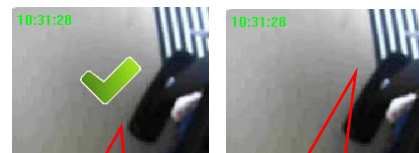


➤ **Quick start with sequential search:**

1. Choose sequential search channel and time period.
2. Select two images from these sequential pictures by clicking on the images, and then click Search.
3. Repeat this procedure until time period into one second resolution.
4. Click **Detail picture** to approach snapshot images dialog.
5. Select these snapshot images, and save them to assigned folder.

➤ **Define search time period:** We need to define time period for the sequential search task. We could define time period by two ways and the selected time period will display on the upper left corner.

1. Select two images from these sequential pictures to define search time period. Click on the image to select it and click it again to un-select it.
2. Or drag on the time line to define search time period directly.



Selected

Un-Selected



- **Blue bar:** The time period of selected images for sequential search.
- **Green transparent bar:** New time period to be searched.

- **Start search and rollback:** After defined search time period, and then click **Search** to display next search result. Click **Pre search** for rollback to previous search result.
- **Detail window for snapshots:** The dialog will display small snapshot images by search result. In case you need bigger image of snapshots, you could enable “Show Detail Window” to get a resizable window for display the detail snapshot. You could move the detail window and resize it to get bigger preview image size.
- **Preview mode of search result:** You could define the preview mode of search result by these parameters below.



- **Time Split:** Define the number to divide the search time period equally, and take a snapshot at beginning of each part.
- **Division:** Select the display division mode of search result.
- **Switch page buttons:** In case the search result couldn't display within one page, then these buttons will be enabled. Click these buttons to switch the pages of snapshot.