

IMPORTANT NOTICE FOR INDIAN USERS

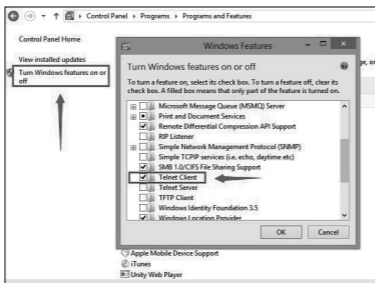
If you are with (1) **Connect** (Punjab) (2) **Tata Teleservices** (Pan India) (3) **MTS** (Rajasthan), you are required to perform the following steps on the TP-LINK router.

Step 1 Find your ISP registered MAC Address.

- Look it up on your existing ADSL router (usually written on a sticker at the bottom) or
- Contact your ISP.

Step 2 Enable telnet service on your computer.

Go to Control Panel -> Programs -> Programs and Features -> Turn Windows features on or off. Make sure "Telnet Client" is checked.

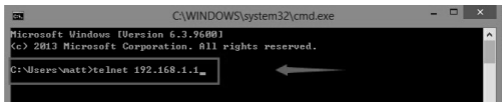


Step 3 Clone registered MAC Address to the TP-LINK router.

Connect your computer to the TP-LINK router via Ethernet cable, and power on the router.

Press "Windows key" + "R" to open Run dialog. Input "cmd" and hit OK. Enter the following command in the black window.

- Type in "telnet 192.168.1.1", and then press Enter.



2) Log in with **admin** as the password. Then press **Enter**.



```
Telnet 192.168.1.1
Password: *****
```

A screenshot of a Telnet window titled "Telnet 192.168.1.1". The window shows a black terminal with a white prompt "Password: *****" followed by a cursor. A white arrow points to the password field.

3) Type in "**sys atsm MAC Address**". Then press **Enter**.

MAC Address: Your registered MAC Address checked from step1.



```
Telnet 192.168.1.1
Username:admin
Password:
TP-LINK > sys atsm xxxxxxxxxxxxxx
```

A screenshot of a Telnet window titled "Telnet 192.168.1.1". The terminal shows the login process: "Username:admin" and "Password:". Below that, the command "TP-LINK > sys atsm xxxxxxxxxxxxxx" is entered. A white arrow points to the command line.

4) If you get the message as shown below, it's a success.



```
Telnet 192.168.1.1
Password: *****
Copyright (c) 2001 - 2014 TP-LINK TECHNOLOGIES CO., LTD.
TP-LINK> sys atsm 0014785301d0
loRtsm(): Write MAC Address Success
```

A screenshot of a Telnet window titled "Telnet 192.168.1.1". The terminal shows the output of the previous command: "Password: *****", "Copyright (c) 2001 - 2014 TP-LINK TECHNOLOGIES CO., LTD.", and "TP-LINK> sys atsm 0014785301d0". The final line is "loRtsm(): Write MAC Address Success". A white arrow points to this line.

Step 4 Go on and configure your TP-LINK router as per the QIG.

Step 5 If the above provided solution does not help in your case, please do contact us at 1800 2094 168 or support.in@tp-link.com.

Why do we need MAC Clone and which operators need MAC Clone?

Some of the ISP register or bind the MAC Address of the CPE (Customer Routers) for the authentication and privacy purpose, so they cannot be used at other locations other than customer's location. At present, 3 Service Providers in India need MAC Clone on their network: (1) **Connect** (Punjab) (2) **Tata Teleservices** (Pan India) (3) **MTS** (Rajasthan). If you do not configure MAC Clone, the Internet will not work through our TP-LINK router.