

Installation

1

Connecting the device

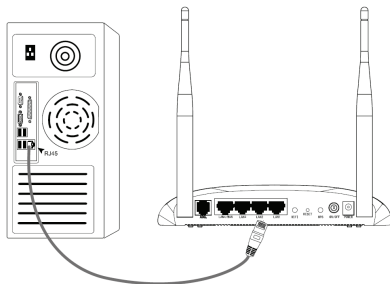
Note Please tear off the plastic film on the modem router for heat dissipation.

1

If you currently use a modem, disconnect it now - the modem router will replace your current modem.

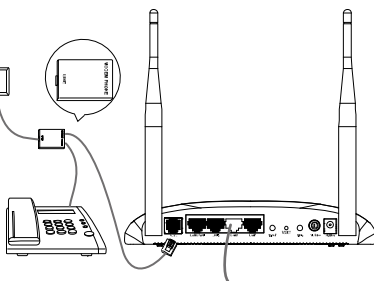
2

Connect your computer to the Port labeled "1~4" on the modem router with an Ethernet cable.



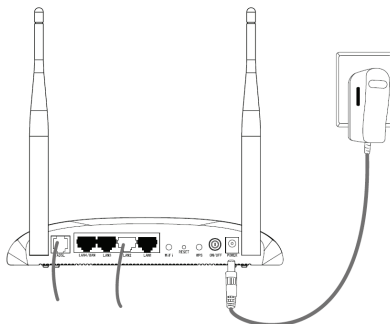
3

Connect the splitter to the wall jack using a telephone line, then use the other telephone line to directly connect it to the ADSL port on the modem router and the MODEM port of the splitter, also have the PHONE port of the splitter connected to a telephone.

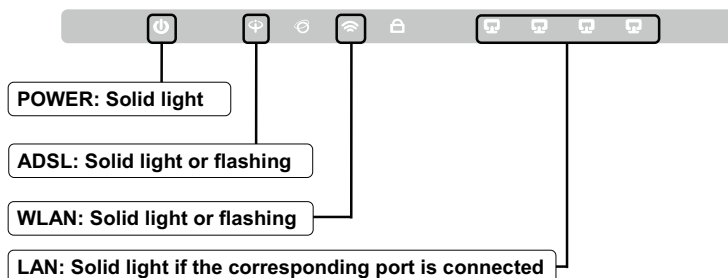


Note If no telephone is needed, please connect the ADSL port of the modem router to the wall jack using the telephone line directly.

- 4 Plug the provided Power Adapter into the Power jack on the back of the Modem Router and the other end to a standard electrical wall socket.



- 5 Power on all your network devices and then check to see if the LEDs of the modem router display normally as the diagram below describes.



Note If the LEDs display abnormally, please check to see if all the cable connectors (power adapter, phone line and Ethernet cable) are well connected to your device. With the phone line well connected, if the ADSL LED turns off after flashing, please contact your ISP to ensure that your Internet connection is active.

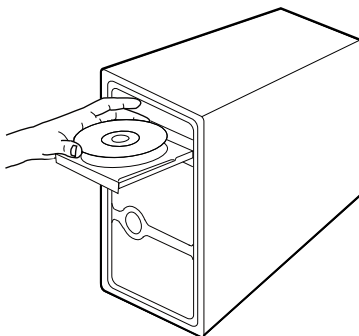
2

Configuring the device

Note To configure the device, TP-LINK strongly recommends that Windows users run the setup CD, Mac OS/Linux/Windows/Android/iOS user who can not run the mini CD, please refer to **Appendix** to run the web-based Quick Setup Wizard.

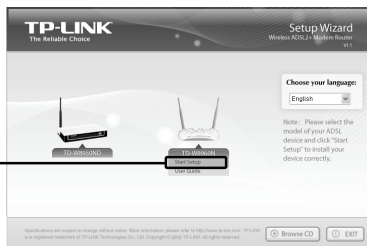
Use the CD

- 1 Insert the provided Resource CD into your CD-ROM drive.



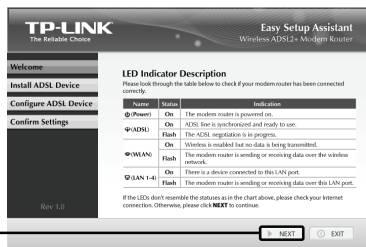
- 2 The Setup Wizard will automatically pop up on your computer's screen.

Please select your product model and click **Start Setup**



Then a flash video will pop up and show you how to connect your devices. After that, the **Easy Setup Assistant** will start.

Click **NEXT**, and then follow the step-by-step instructions until you complete the configuration



The configuration has now been completed. Please skip to **Step 3 “Testing the Internet Connection”**.

3

Testing the Internet Connection

The basic settings for your modem router are completed. Please open the web browser and try to log on to some popular website to test your Internet connection, for example:

<http://www.tp-link.com>

<http://www.google.com>

If the above websites can be accessed, it indicates that your modem router has been configured successfully and you can start to enjoy the Internet. If the websites cannot be accessed, please refer to **“T4. What can I do if I cannot access the Internet?”** in the **Troubleshooting** guide.

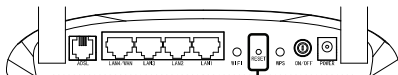
Note For the advanced configurations, please refer to the User Guide on the CD provided.

Note The above configurations only need to be set once. If you want other computers in your LAN to access the Internet, please connect the desired computer to the ADSL Modem Router directly. If the additional computer can not access the Internet, please set that computer referring to **“T3. What can I do if I cannot access the web-based configuration page?”** in the **Troubleshooting** guide.

Troubleshooting

T1. How do I restore my modem router's configuration to its factory default settings?

With the modem router powered on, press and hold the **RESET** button on the rear panel for 8 to 10 seconds before releasing it.



Press it for 8 to 10 seconds

Note Once the modem router is reset, the current configuration settings will be lost and you will need to re-configure the modem router.

T2. What can I do if I don't know or forget my password?

- 1) Restore the modem router's configuration to its factory default settings. If you don't know how to do that, please refer to **T1**.
- 2) Use the default user name and password: **admin, admin**.
- 3) Try to configure your modem router once again by following the instructions in the previous steps of the QIG.

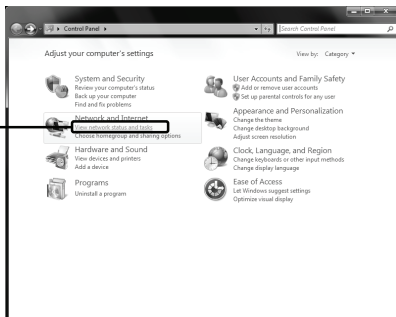
T3. What can I do if I cannot access the web-based configuration page?

- 1) Configure your computer's IP Address.

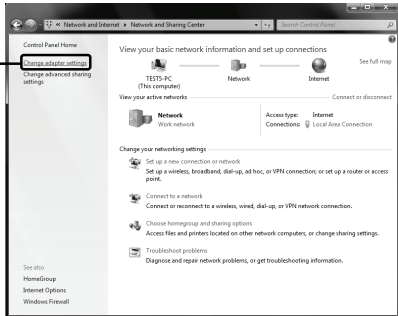
For Windows 7 OS

Go to **Start > Settings > Control Panel**, and then you will see the following page.

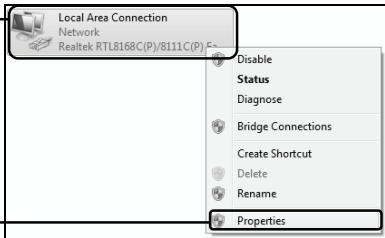
Click **View network status and tasks**



Click **Change adapter settings**

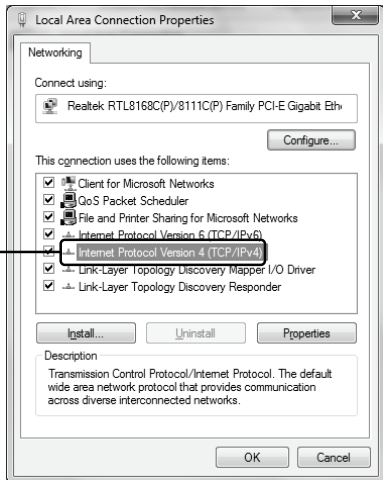


Right-click **Local Area Connection**



Click **Properties**

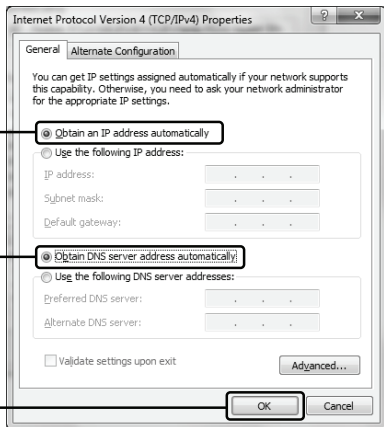
Double-click **Internet Protocol Version 4 (TCP/IPv4)**



Select **Obtain an IP address automatically**

Select **Obtain DNS server address automatically**

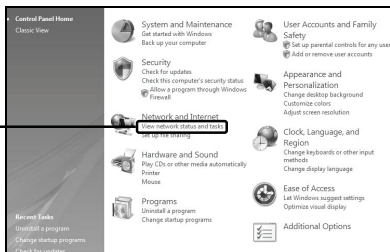
Click **OK**



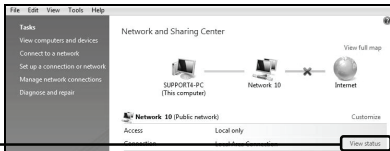
For Windows Vista OS

Go to **Start > Settings > Control Panel**, and then you will see the following page.

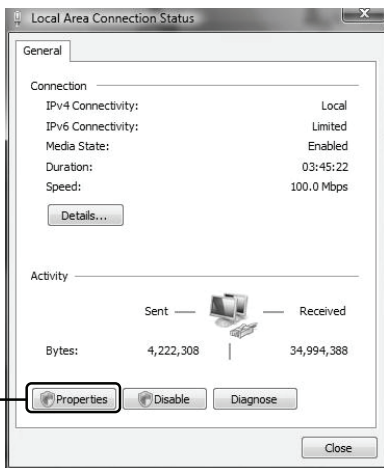
Click **View network status and tasks**



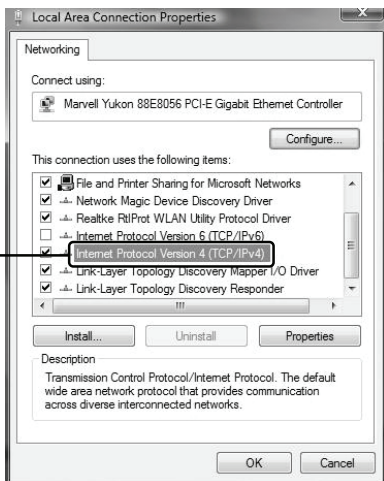
Click **View status**



Click **Properties**



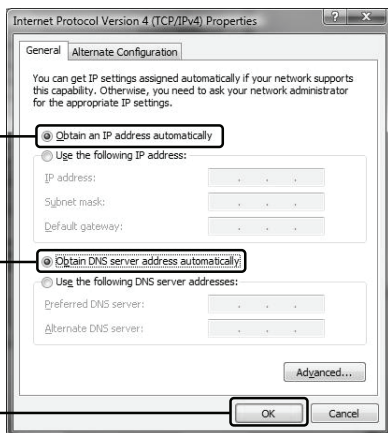
Double-click **Internet Protocol Version 4 (TCP/IPv4)**



Select **Obtain an IP address automatically**

Select **Obtain DNS server address automatically**

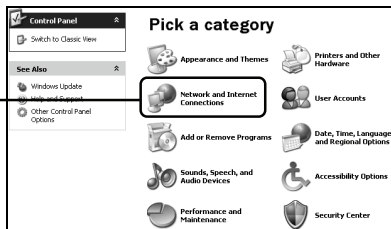
Click **OK**



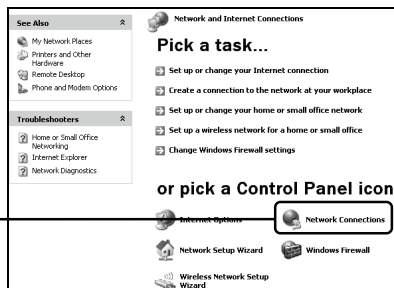
For Windows XP OS

Go to **Start > Control Panel**, you will then see the following page.

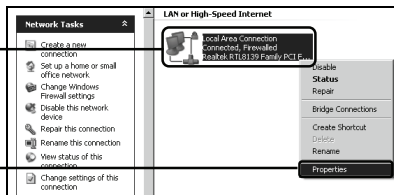
Click **Network and Internet Connections**



Click **Network Connections**

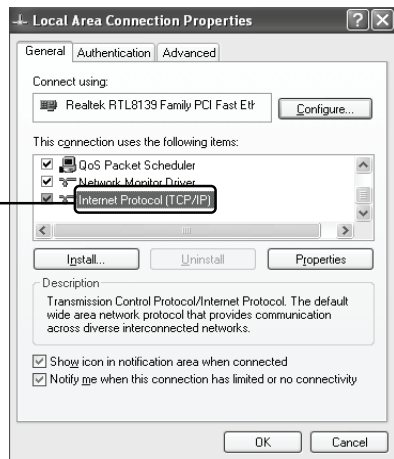


Right-click **Local Area Connection**



Click **Properties**

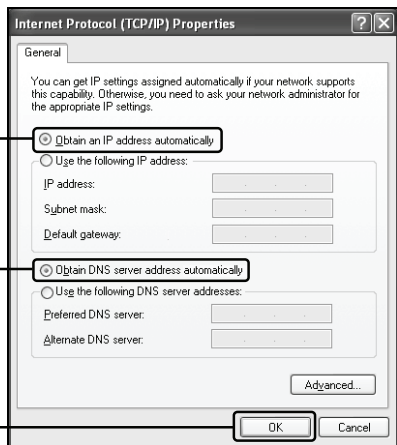
Double-click **Internet Protocol (TCP/IP)**



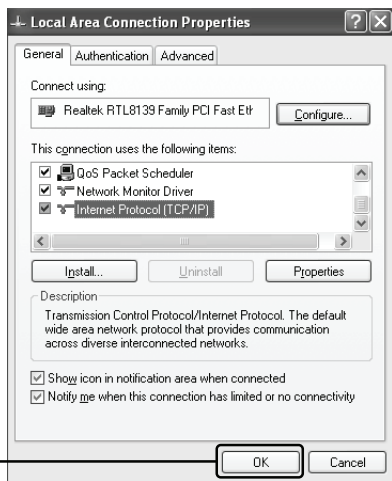
Select **Obtain an IP address automatically**

Select **Obtain DNS server address automatically**

Click **OK**

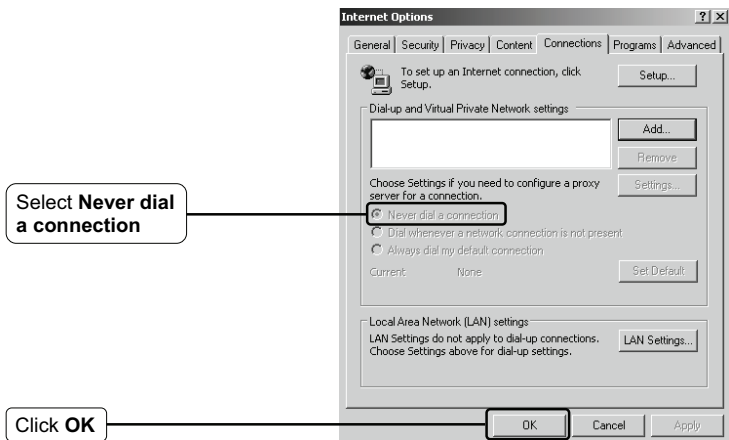
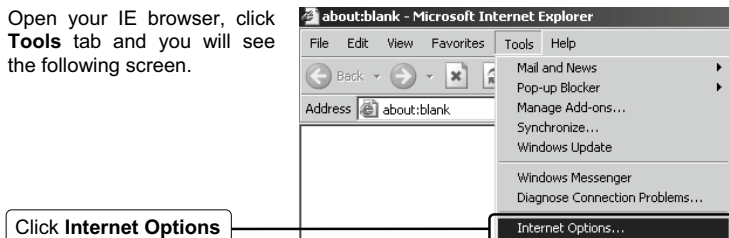


Click **OK**



2) Configure your IE browser.

Open your IE browser, click **Tools** tab and you will see the following screen.



Now, try to log on to the Web-based configuration page again after the above settings have been configured. If you still cannot access the configuration page, please restore your modem router's factory default settings and reconfigure your modem router following the instructions of this QIG. Please feel free to contact our Technical Support if the problem persists.

T4. What can I do if I cannot access the Internet?

- 1) Check to see if all the connectors are connected well, including the telephone line, Ethernet cables and power adapter.
- 2) Check to see if you can log on to the web management page of the modem router. If you can, try the following steps. If you cannot, please set your computer referring to **T3** then try to see if you can access the Internet. If the problem persists, please go to the next step.
- 3) Consult your ISP and make sure all the VPI/VCI, Connection Type, account username and password are correct. If there are any mistakes, please correct the settings and try again.
- 4) If you still cannot access the Internet, please restore your modem router to its factory default settings and reconfigure your modem router by following the instructions of this QIG.
- 5) Please feel free to contact our Technical Support if the problem still exists.

Note For more details about Troubleshooting and Technical Support contact information, please log on to our Technical Support Website:
<http://www.tp-link.com/en/support>

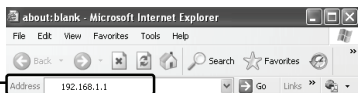


Appendix

Configuration for Mac OS/Linux/Windows/Android/iOS users who cannot run the mini CD

1 Login

Open your web browser and type **192.168.1.1** in the address bar and press **Enter**



A dialog box will prompt you for the **User name** and **Password**. Enter the default values and click **OK**.

User name: admin
Password: admin

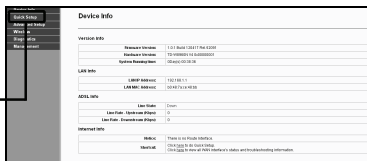


Click **OK**

Note If the dialog box does not pop up, please refer to **T3** in the **Troubleshooting** guide and **T2** will give you some help if you forget the password.

The web management page will display after a successful login.

Click **Quick Setup**



2 Internet Parameters Configuration

This page will then display.

Choose the **WAN Type** for Internet access.
If **ADSL WAN** is selected, please continue to read this guide;
If **Ethernet WAN** is selected, please refer to section **4.4. 2 WAN Service** in User Guide;

Quick Setup - WAN Configurations

Please choose the Wan type for Internet access.

Choose WAN Type: ADSL WAN For ADSL(Telephone line(RJ11)) Service
 Ethernet WAN For Ethernet(RJ45) Service

Click **Next**

Note If you are unwilling to configure WAN Service now, you can click the **Skip WAN** button, and you can configure it in the **Layer2 Interface** referring to **User Guide** later.

ADSL WAN Type

Enter the **VPI** and **VCI** values given by your ISP

Choose the **WAN Link Type** given by your ISP.
If **PPPoE** or **PPPoA** is selected, please proceed to **A**;
If **IPoE** is selected, please skip to **B**;
If **IPoA** is selected, please skip to **C**;
If **Bridge** is selected, please skip to **D**.

Quick Setup - WAN Configurations

VPI/VCI: 1 | 35 (0-255) (0-65535)

Encapsulation Mode: LLC/STMP-802.1Q (optional)

WAN Link Type: PPPoE over Ethernet (B)

PPP Username: PPPoE user A123

PPP Password: (Pw) 0000 or (Pw)A4

PPP Service Name: Bridge

MTU (bytes): 1480 (optional)

Note If you did not get the **VPI**, **VCI** and **WAN Link Type** information, please contact your ISP for this information.

Note **Bridge** mode is not recommended because multiple computers are not permitted to share Internet access in this mode.

A. Configuration for PPPoE or PPPoA

Enter the **PPP Username** and **PPP Password** provided by your ISP

Click **Next**

Quick Setup - WAN Configurations

VPI/VCI: 8 / 35 (0-255) (0-65535)
Encapsulation Mode: LLC/SHAP-BRIDGING (optional)

WAN Link Type: PPPoE (PPPoE over Ethernet) ▼

PPP Username:
PPP Password:
PPPoE Service Name: (optional)
MTU Bytes: (optional)

Back Next Start

Note If you did not get the **PPP Username** or **PPP Password**, please contact your ISP for this information.

Note The configuration for **PPPoA** is similar to that of **PPPoE**.

B. Configuration for IPoE

If **WAN IP Address, Subnet Mask, Gateway IP Address** and **DNS** are provided by your ISP, check the **Static IP** and **Set DNS Manually** boxes and enter them into the corresponding blanks. Otherwise, check the **Use DHCP** and **Obtain Automatically** boxes

Click **Next**

Quick Setup - WAN Configurations

VPI/VCI: 8 / 35 (0-255) (0-65535)
Encapsulation Mode: LLC/SHAP-BRIDGING (optional)

WAN Link Type: IPoE (DHCP or IPoE) ▼

WAN IP Address Settings: Dynamic IP Static IP

WAN IP Address:
WAN Subnet Mask:
WAN gateway IP Address:

DNS Settings: Obtain Automatically Set DNS Manually

Primary DNS:
Secondary DNS: (optional)

Back Next Start

C. Configuration for IPoA

Enter the **WAN IP Address, Subnet Mask** and **DNS** addresses provided by your ISP

Click **Next**

Quick Setup - WAN Configurations

VPI/VCI: 8 / 35 (0-255) (0-65535)
Encapsulation Mode: LLC/SHAP-BRIDGING (optional)

WAN Link Type: IPoA (Static IP over ATM) ▼

WAN IP Address Settings: Dynamic IP Static IP

WAN IP Address:
WAN Subnet Mask:
DNS Settings: Obtain Automatically Set DNS Manually

Primary DNS:
Secondary DNS: (optional)

Back Next Start

Note If you did not get the **IP Address**, **Subnet Mask** and **DNS** addresses, please contact your ISP for this information.

D. Configuration for Bridge Mode

This type doesn't need to be configured.

Click **Next**

Quick Setup - WAN Configurations

VPI/VCI: 8 / 35 @ 256/123456789

Encapsulation Mode: LLC/802-3/802-1Q (optional)

WAN Link Type: Bridge

Back Next Start

After completing the above configuration, please proceed to **3 Wireless Configuration**.

3 Wireless Configuration

Create a unique and easy to remember name for your wireless network. You can also keep the default setting without the device being affected

Select a **Network Authentication** (here takes Mixed WPA2/WPA-PSK Personal for example)

Create a Security Key using 8-64 characters

Click **Next**

Quick Setup - Wireless Configurations

Enable Wireless:

You can configure SSID and your WLAN Authentication Name

Network Name: TP-LINK_201803

Network Authentication: Mixed WPA2/WPA-PSK Personal (default) (see 3)

Network Security Key: ***** (8-64 characters or 8-64 hexadecimal characters)

Back Stop (W-PSK) Start

Note The wireless security is **Disabled** by default. You are suggested to select a **Network Authentication** for security settings.

After completing the above configuration, please proceed to **4 Quick Setup - Summary**.

4 Quick Setup – Summary

To continue, the following page will be displayed.

Quick Setup - Summary

WAN Configurations

WAN Type:	ADSL VDSL
WAN Username:	USER
WAN Password:	XXXXXXXXXXXX
WAN IP Type:	PPPoE
PPPoE Username:	USER
PPPoE Password:	XXXXXXXXXXXX
PPPoE MTU:	1480

Note: Some WAN Connections (e.g. PPPoE) may be addressed by name only.

Wi-Fi Configurations

Wireless Network Name:	TP-LINK_XXXXXX
Wireless Network Type:	WPA2-PSK/WPA3-PSK/Personal
Wireless Network Key:	XXXXXXXXXXXX

Click **Confirm**

Now, your modem router has been configured.

Technical Support

- For more troubleshooting help, go to:
<http://www.tp-link.com/en/support/faq>
- To download the latest Firmware, Driver, Utility and User Guide, go to:
<http://www.tp-link.com/en/support/download>
- For all other technical support, please contact us by using the following details:

Global

Tel: +86 755 26504400
E-mail: support@tp-link.com
Service time: 24hrs, 7 days a week

UK

Tel: +44 (0) 845 147 0017
E-mail: support.uk@tp-link.com
Service time: 24hrs, 7 days a week

Turkey

Tel: 444 19 25 (Turkish Service)
E-mail: support.tr@tp-link.com
Service time: 9:00 AM to 9:00 PM
7 days a week

Ukraine

Tel: 0-800-505-508
E-mail: support.ua@tp-link.com
Service time: Monday to Friday
14:00 PM to 22:00 PM

Brazil

Toll Free: 0800-770-4337 (Portuguese Service)
E-mail: suporte.br@tp-link.com
Service time: Monday to Saturday
08:00 AM to 08:00 PM

France

Tel: +33 (0) 820 800 860 (French service)
Email: support.fr@tp-link.com
Fee: 0.118 EUR/min from France
Service time: Monday to Friday 9:00 AM to 6:00 PM (Except French Bank holidays)

Russian Federation

Tel: 8 (499) 754-55-60
8 (800) 250-55-60 (toll-free call from any RF region)
E-mail: support.ru@tp-link.com
Service time: From 10:00 to 18:00 (Moscow time)
*Except weekends and holidays in Russian Federation

Switzerland

Tel: +41 (0) 848 800998 (German Service)
E-mail: support.ch@tp-link.com
Fee: 4-8 Rp/min, depending on rate of different time
Service time: Monday to Friday 9:00 AM to 6:00 PM. GMT+ 1 or GMT+ 2 (Daylight Saving Time)

Singapore

Tel: +65 62840493
E-mail: support.sg@tp-link.com
Service time: 24hrs, 7 days a week

USA/Canada

Toll Free: +1 866 225 8139
E-mail: support.usa@tp-link.com
Service time: 24hrs, 7 days a week

Australia / New Zealand

Tel: AU 1300 87 5465
NZ 0800 87 5465
E-mail: support@tp-link.com.au
Service time: 24hrs, 7 days a week

Italy

Tel: +39 0230519020
E-mail: support.it@tp-link.com
Service time: Monday to Friday
9:00 AM to 1:00 PM, 2:00 PM to 6:00 PM

Indonesia

Tel: (+62) 021 6259 135
E-mail : support.id@tp-link.com
Service time : Monday to Friday
9:00 -12:00; 13:00 -18:00
*Except public holidays

Malaysia

Tel: 1300 88 875465 (1300 88TPLINK)
Email: support.my@tp-link.com
Service time: 24hrs, 7 days a week

Poland

Tel: +48 (0) 801 080 618 / +48 22 7217563 (if calls from mobile phone)
E-mail: support.pl@tp-link.com
Service time: Monday to Friday
9:00 AM to 5:00 PM. GMT+1 or GMT+2 (Daylight Saving Time)

Germany / Austria

Tel: +49 1805 875465 (German Service)
+49 1805 TPLINK
E-mail: support.de@tp-link.com
Fee: 0.14 EUR/min from the German fixed phone network and up to 0.42 EUR/min from mobile phone
Service time: Monday to Friday 9:00 AM to 6:00 PM. GMT+ 1 or GMT+ 2 (Daylight Saving Time in Germany)
*Except bank holidays in Hesse

