

# Print Server Application Guide



TD-W8968



TD-W8970 / TD-W8970B



TD-W8980 / TD-W8980B

# Contents

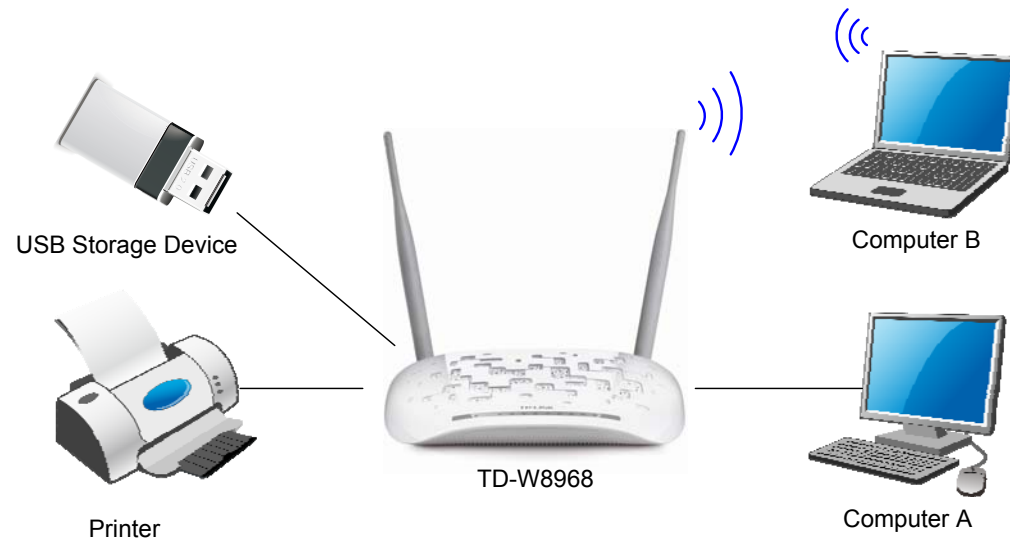
<b>Overview.....</b>	<b>1</b>
<b>Installation for Windows OS .....</b>	<b>2</b>
<b>Application for Windows OS .....</b>	<b>7</b>
How to launch/exit the TP-LINK USB Printer Controller .....	7
How to Print.....	7
How to scan.....	10
Other functions/ settings.....	16
<b>Troubleshooting .....</b>	<b>33</b>

# Overview

Print server is a function embedded in your modem router. It allows you to share your printer with computers that are connected to the modem router.

## Typical Topology

Here in this guide, we take the configuration procedures of TD-W8968 for example.



**Before installing the print server, make sure you have the following devices and accessories:**

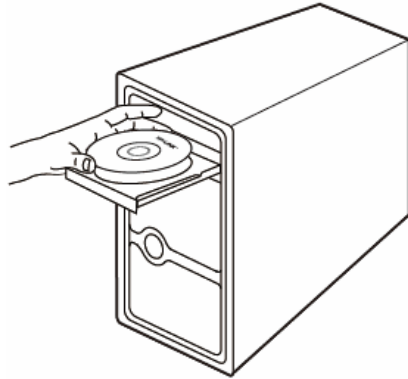
- ✓ Computer with Windows XP/ Vista/ 7/ 8
- ✓ USB printer and USB cable

**Note:**

- (1) Before connection, please check the **Printer Compatibility List** to verify whether your printer is supported by the modem router. You can refer to **Troubleshooting** for downloading the Printer Compatibility List.
- (2) Make sure you have already installed the printer's driver on your computer. Otherwise, please install it first.
- (3) Any computer in your LAN must first install the software if it wants to share the print server via the modem router.

# Installation for Windows OS

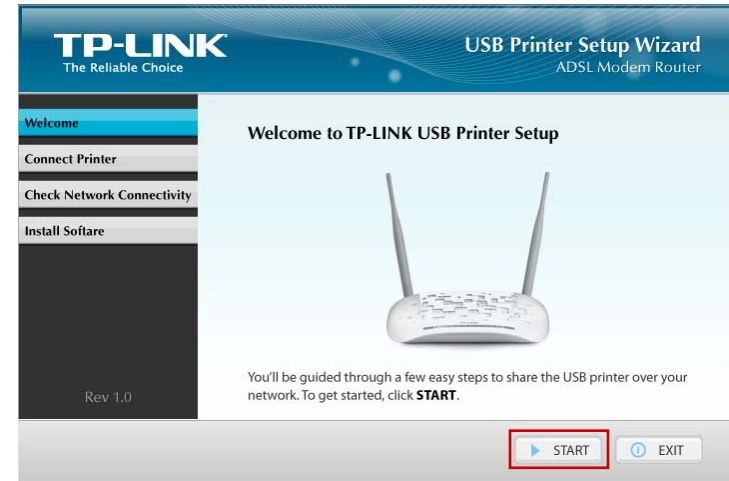
1. Insert the modem router's Resource CD into the CD-ROM drive.



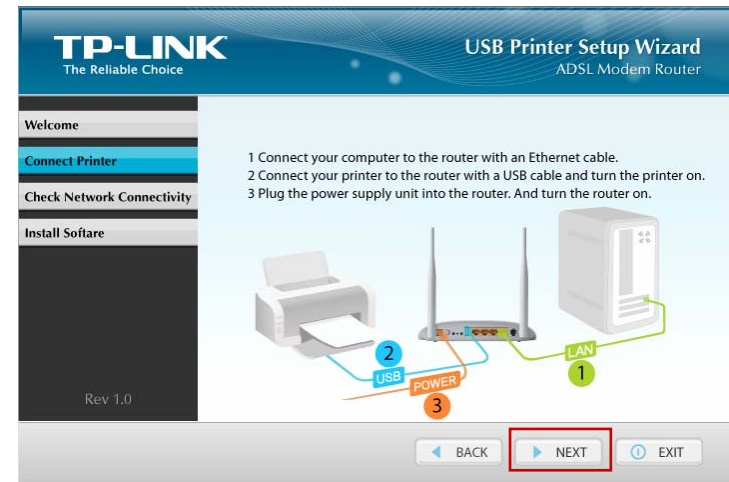
2. Select your modem router model and click **Printer Sharing Setup**.



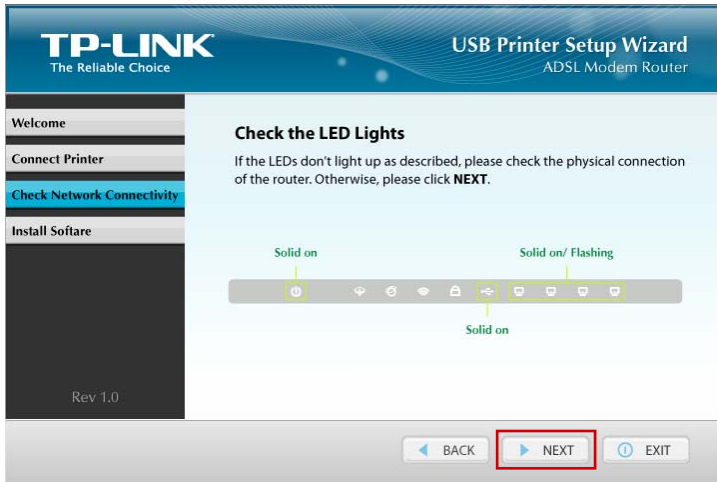
3. Click **START**.



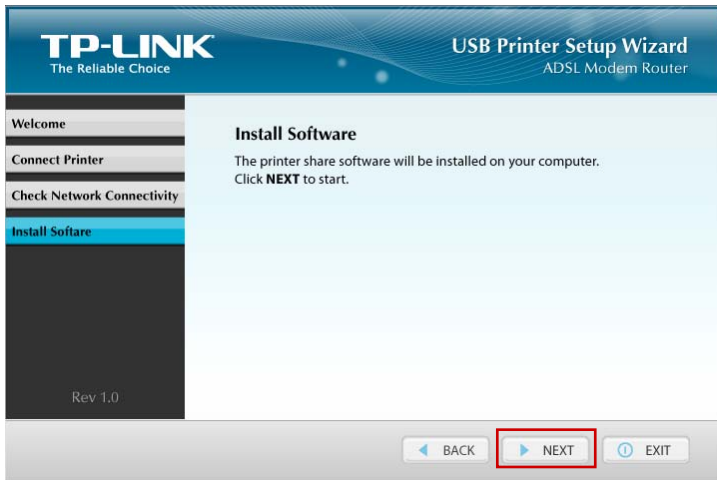
4. Connect your computer and printer to the modem router step by step as instructed. Click **NEXT**.



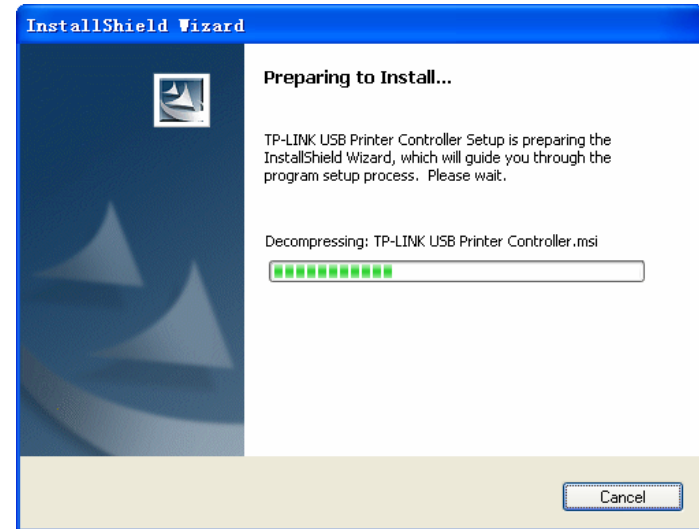
5. Check the LED lights and click **NEXT**.



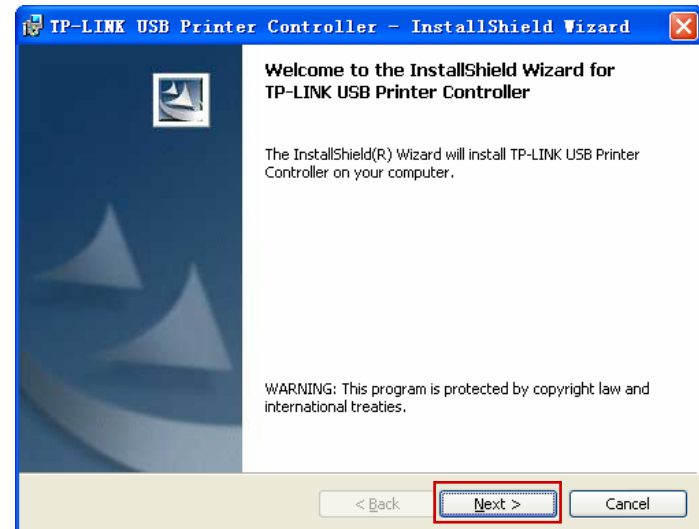
6. Click **NEXT** to start installing the printer share software.



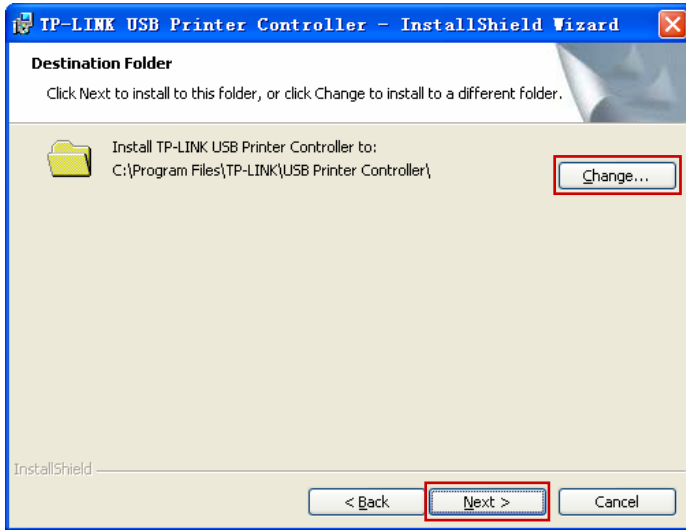
7. Please wait a moment for the installation preparation.



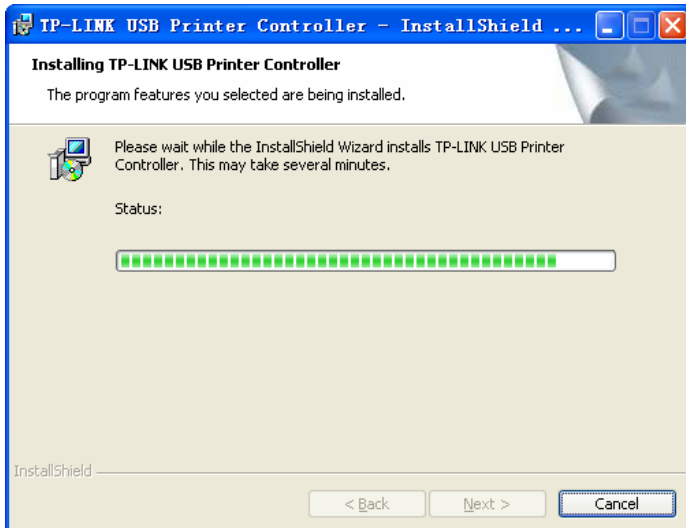
8. Click **Next** and go on to install the TP-LINK USB Printer Controller.



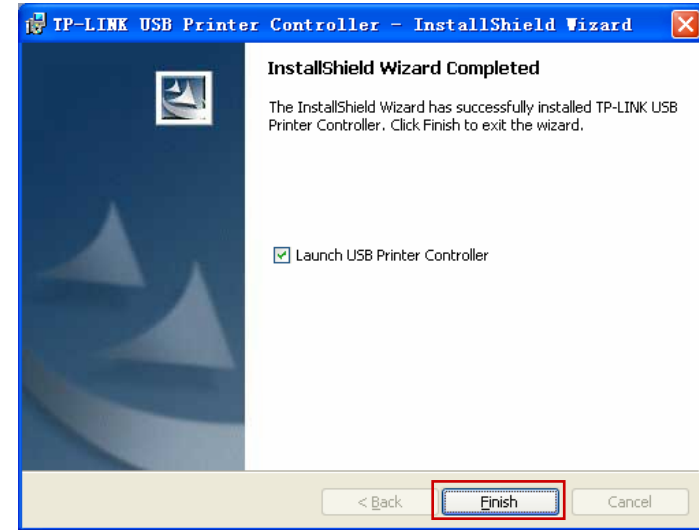
9. Click **Change...** to select another destination folder, or leave it default and click **Next**.



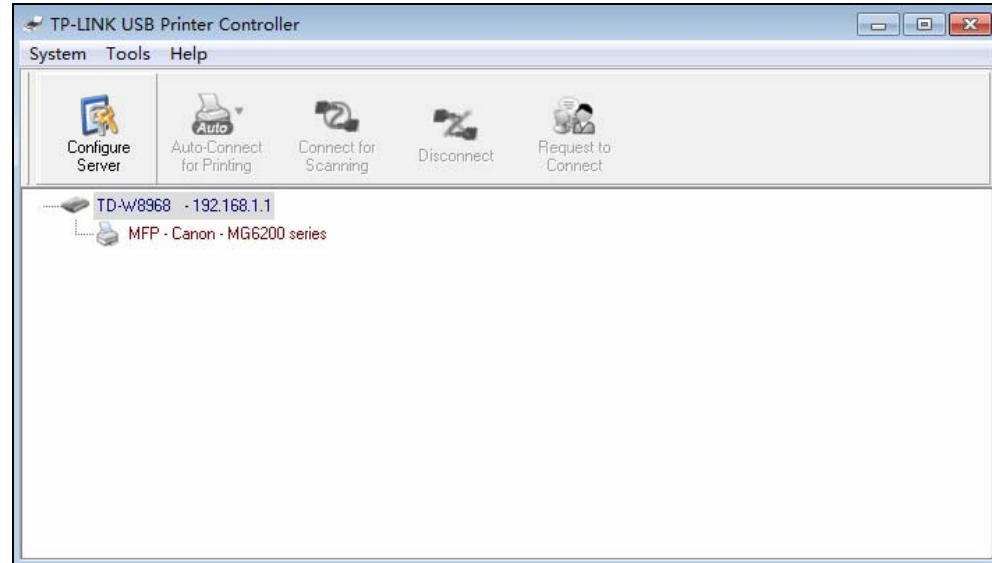
10. Please wait a while for the installation process.



11. Click **Finish** to complete and exit the **InstallShield Wizard**.



When the installation is completed, the TP-LINK USB Printer Controller will pop up, with whose help you can print documents via the modem router now.



**Note:**


In your LAN, each computer that wants to share the print server should also install the **TP-LINK USB Printer Controller**. Please follow the previous steps to configure other computers in your LAN.

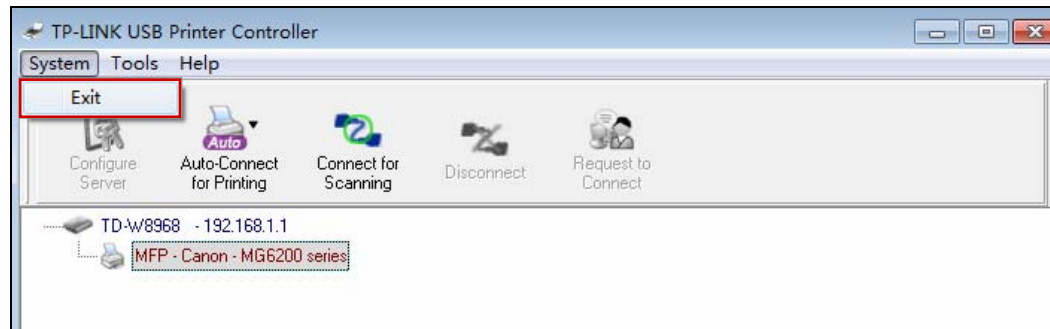
# Application for Windows OS

TP-LINK USB Printer Controller is used to operate the USB Printer on your own computer. After successful installation, the icon will appear on the desktop of your computer.



## How to launch/exit the TP-LINK USB Printer Controller

- To launch the USB Printer Controller, double-click the icon  on your desktop.
- To exit the USB Printer Controller, click **System->Exit** on the TP-Link USB Printer Controller.

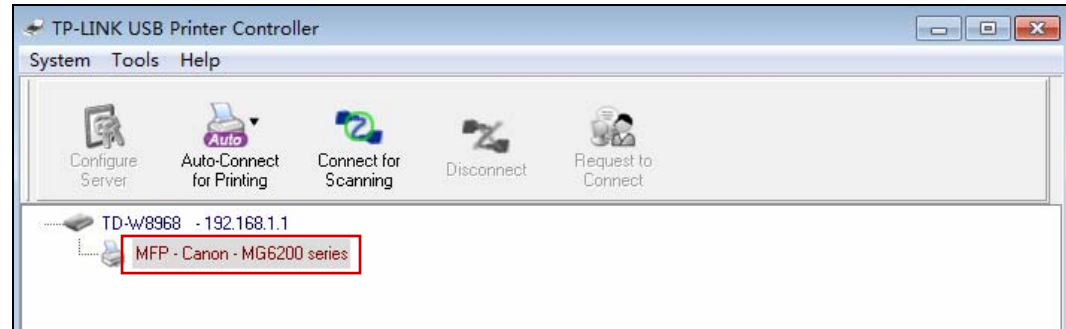


## How to Print

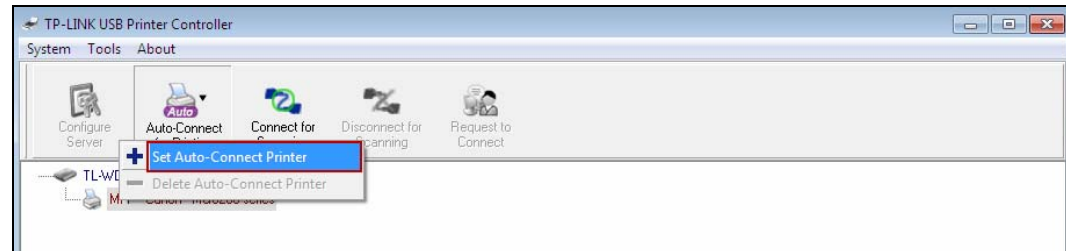
To print, first of all, you need to set your **Auto-Connect Printer**. After successful setting, you can execute your printing tasks automatically. Please follow the steps below to set your auto-connect printer.



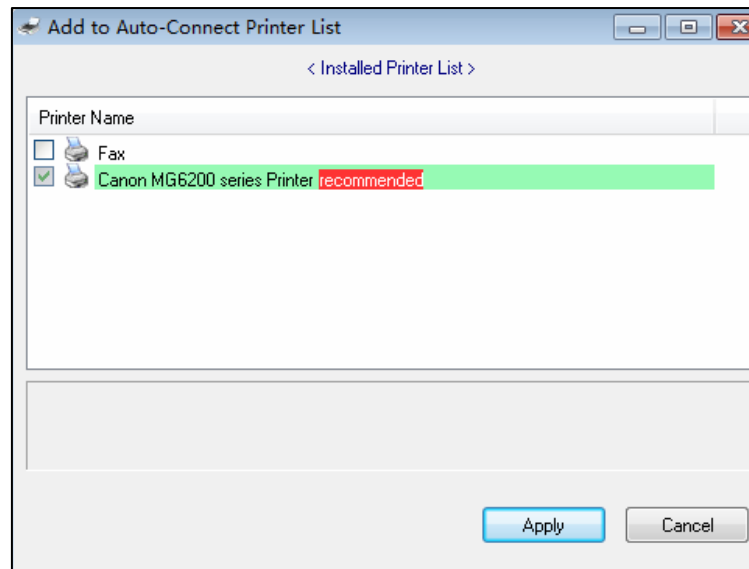
**Step 1:** Highlight the printer you want to set as auto-connect printer.



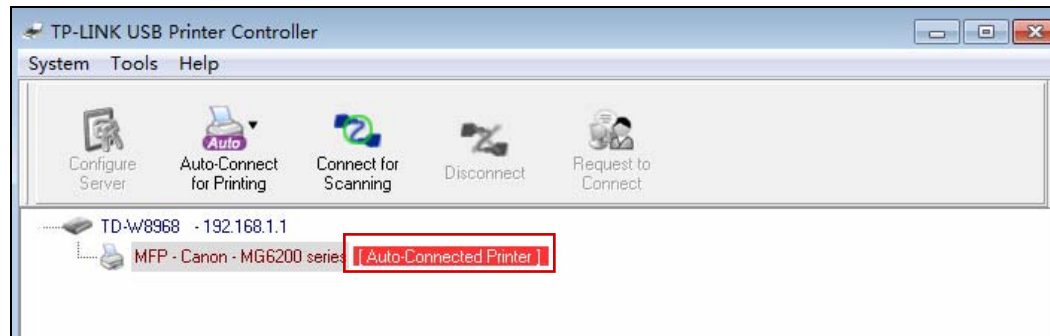
**Step 2:** Click the inverse triangle mark on the **Auto-Connect for printing** tab to pull down the list, where you can select **Set Auto-Connect Printer**.



**Step 3:** Tick the name of the printer you would like to set as auto-connect printer, and then click **Apply**.



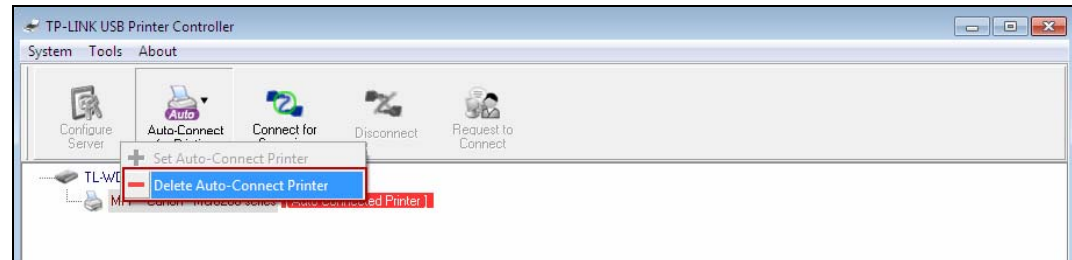
After successful setting, you will see the printer marked as **Auto-Connect Printer**. Then you can execute your printing task freely.



If you want to disable your printer's auto-connect function, you can delete it.

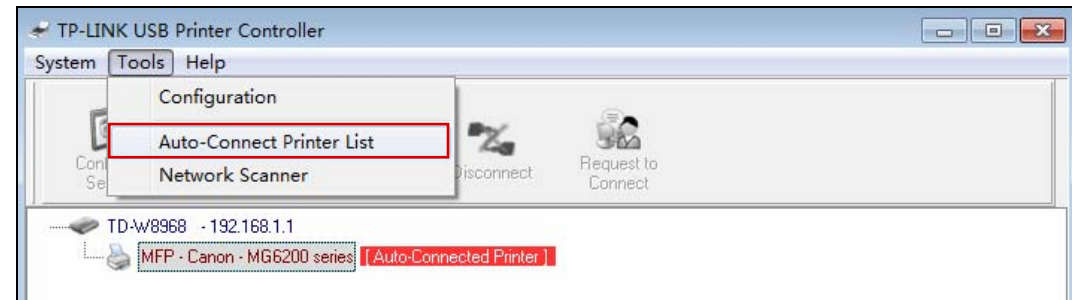
**Method One:**

Select **Delete Auto-Connect Printer** from the drop-down list of the **Auto-Connect for Printing** tab.

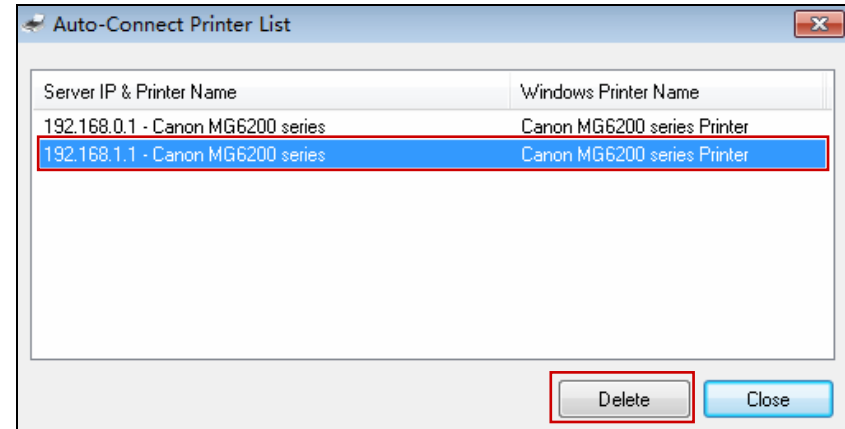


**Method Two:**

1. Go to **Tools->Auto-Connect Printer List**.



2. Highlight your auto-connect printer and then click **Delete**.

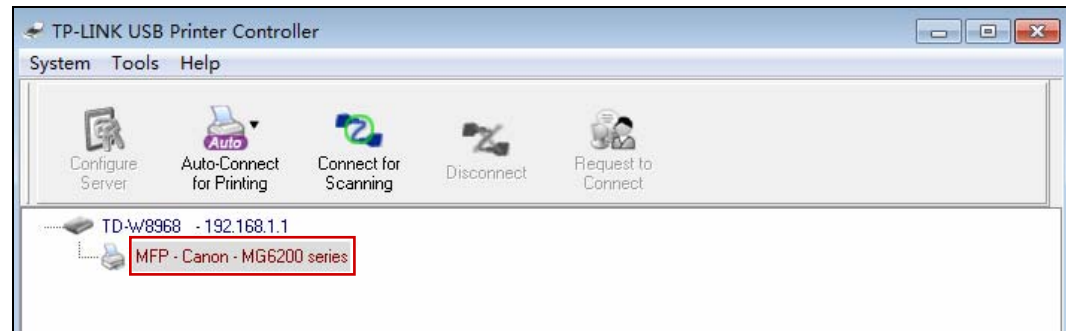


## How to scan

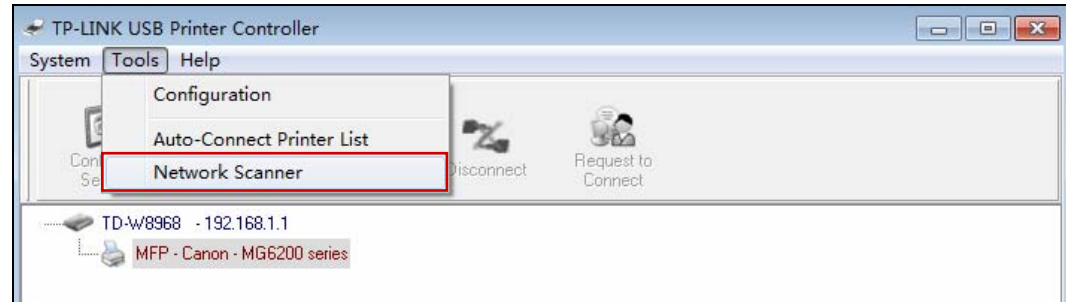
There are two methods available to realize the scanning function.

### Method One: Network Scanner

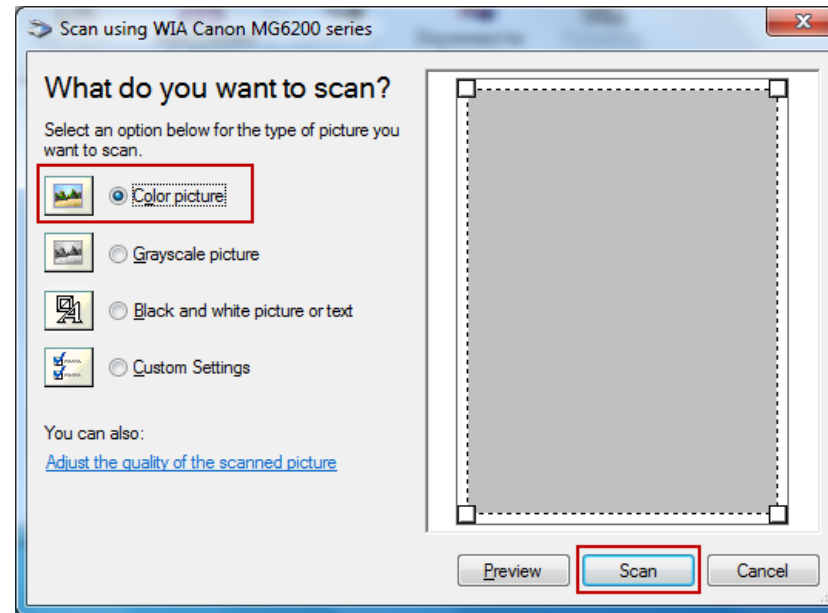
**Step 1:** Highlight your scanner or MFP.



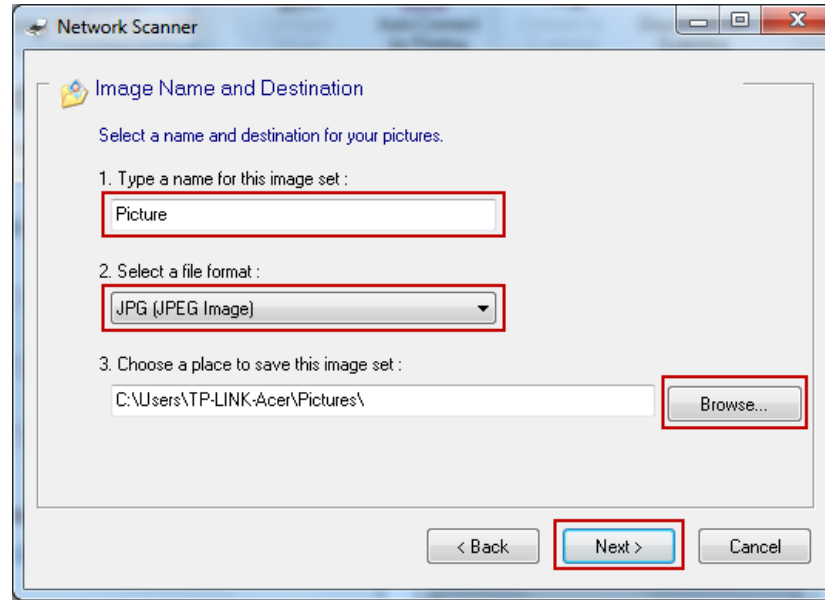
**Step 2:** Click *Tools* and then select *Network Scanner*.



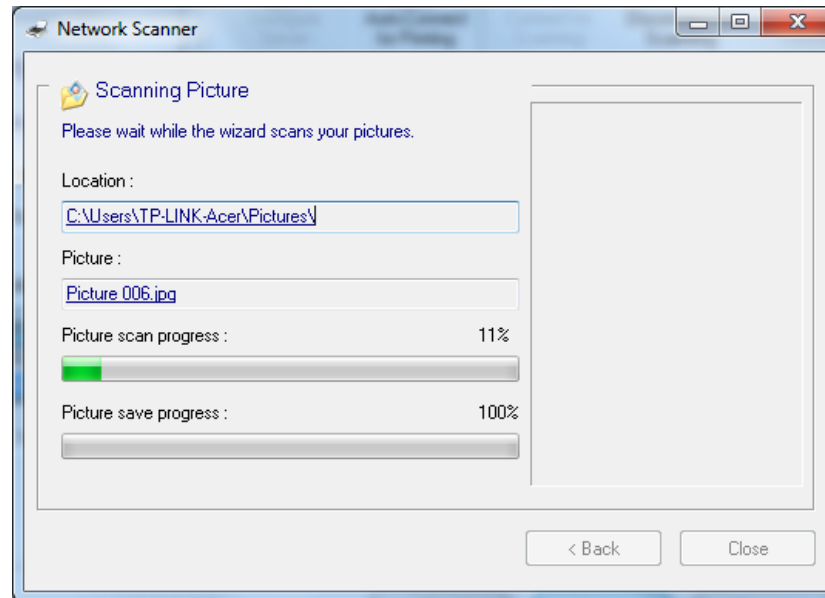
**Step 3:** Select the type of picture you want to scan, and then click *Scan*.



**Step 4:** Name the image set, select the file format, and choose the file destination by clicking **Browse...** or leave it default. Then click **Next**.

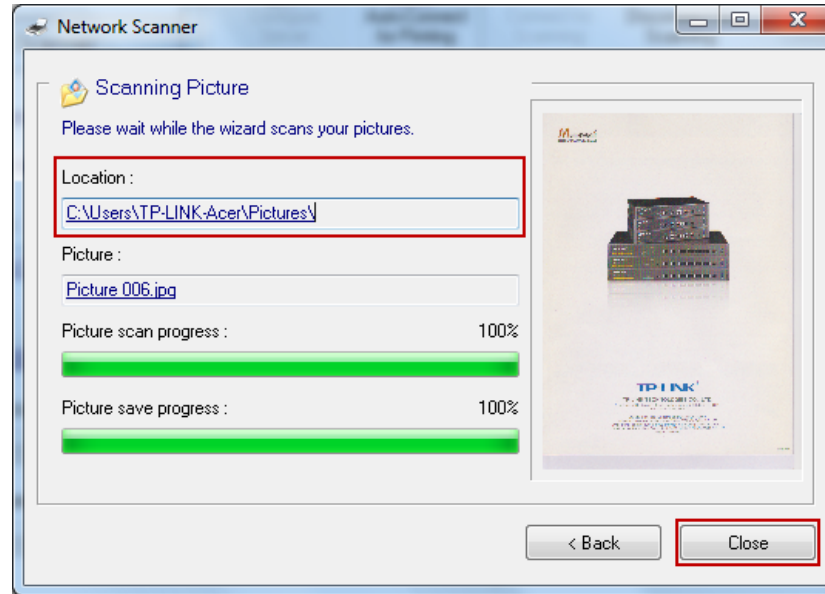


**Step 5:** Wait a while for the scan process.



**Step 6:** When it is 100% processed and saved, please click **Close** to complete it.

Then go to the location you've chosen in the previous **Step 4** and find your picture scanned.



## Method Two: Connect for Scanning

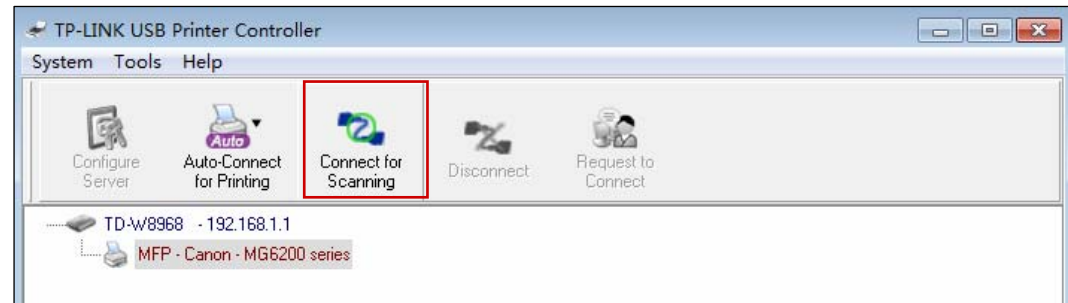
### **Note:**

If you choose this method for scanning, no one else in your LAN can share the scanner or MFP to either print or scan, until you click the tab **Disconnect for Scanning** to release it or accept their **Request to Connect**.

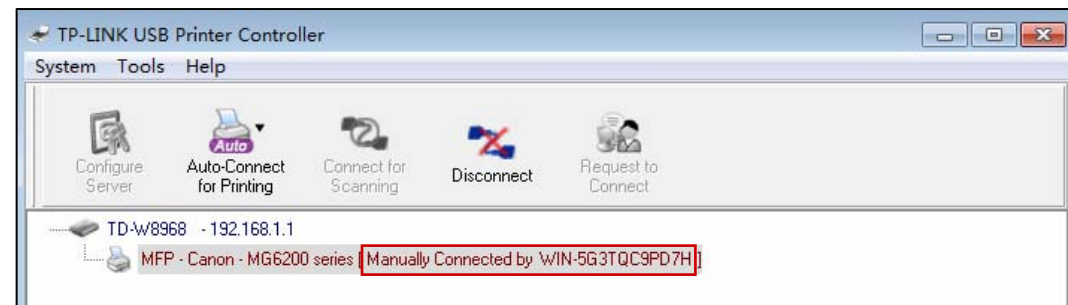
**Step 1:** Highlight your scanner or MFP.



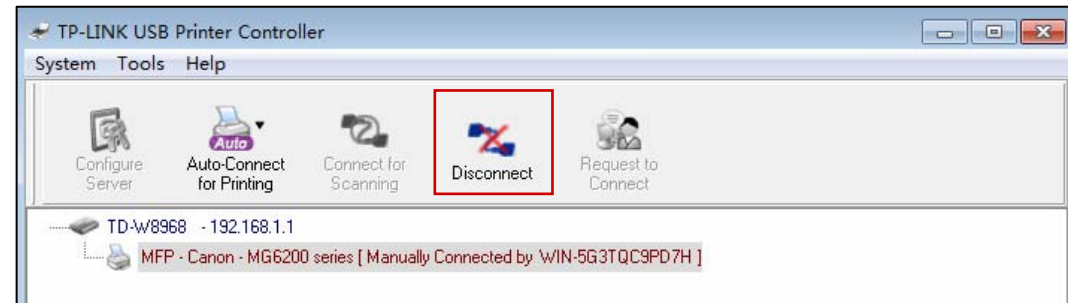
**Step 2:** Click the tab **Connect for Scanning**.



Successfully set and ready for scanning, it will display **Manually Connected by...**, when you can start your scanning task.



**Step 3:** After finishing your scanning task, please do remember to click the tab **Disconnect** to release the scanner or MFP.



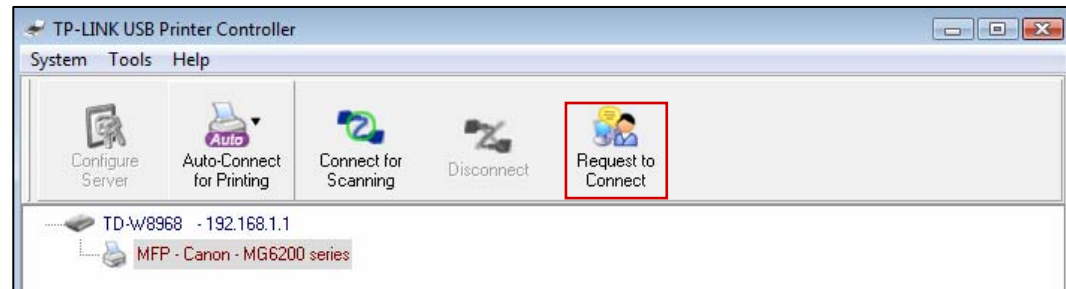
➤ **Request to Connect**

When one computer in you LAN **Connects for Scanning**, it is occupying the scanner or MFP; then if you would like to use the printer as well, you will have to **Request for Connect**.

**Step 1:** Highlight the scanner or MFP you want to share for printing or scanning.



**Step 2:** Click the tab *Request to Connect*.



**Step 3:** You will be prompted a window that transmits your request. Please wait patiently for the reply.





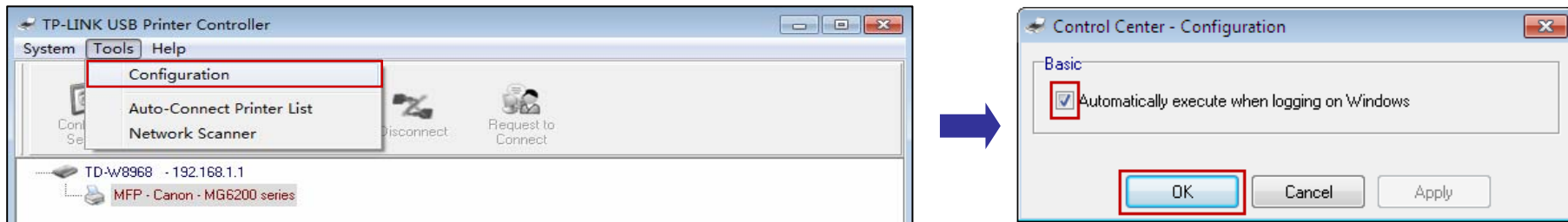
**Step 4:** If the other user **Accepts** your request to connect, please click **Exit** to start your printing or scanning task.



## Other functions/ settings

### ➤ Configuration

Go to **Tools-> Configuration**, tick the option **Automatically execute when logging on Windows**, and then click **OK**.



With this setting, the TP-LINK USB Printer Controller will run automatically every time you log on your computer.

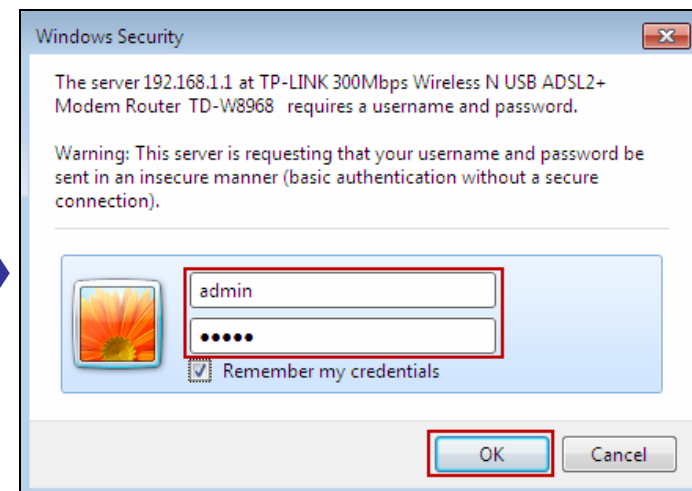
### ➤ About

Go to **Help -> About**, a window will pop up and display some relevant information about this Control Center.



### ➤ **Configure Server**

Highlight the modem router and click the tab **Configure Server**; the login window of the modem router will pop up. You need to enter the user name and password (both are **admin** by default.) to log in the web-based management page of the modem router.



# Troubleshooting

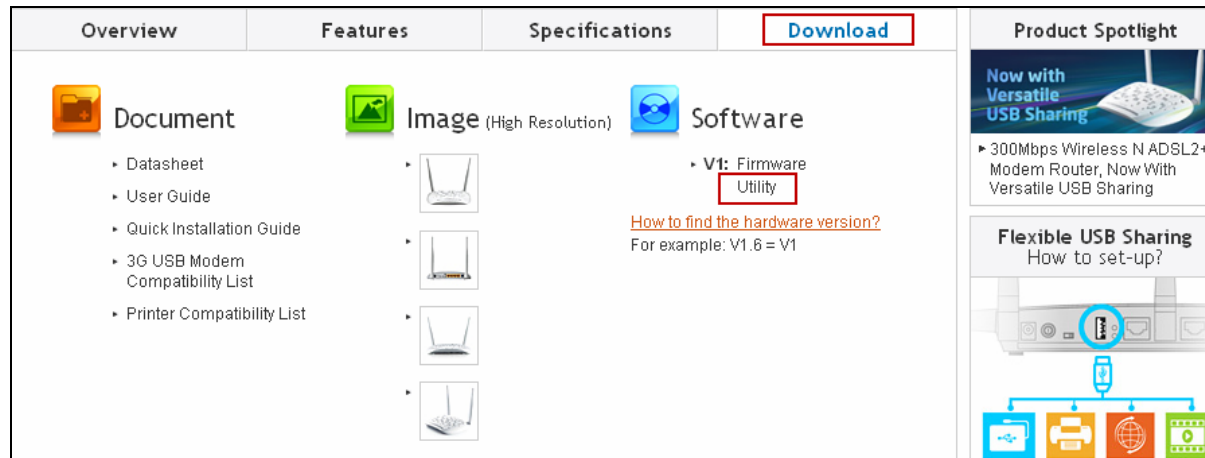
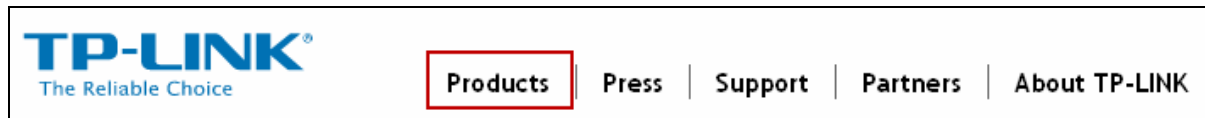
## 1. Where can I find the printer compatibility list?

Go to our website [www.tp-link.com](http://www.tp-link.com), then go to **Products** ->**ADSL**, find your product model and go to **Download** -> **Document** -> **Printer Compatibility List**.

The screenshot shows the TP-LINK website navigation and product page. The top navigation bar includes the TP-LINK logo and the text "The Reliable Choice". The navigation menu includes "Products", "Press", "Support", "Partners", and "About TP-LINK". A blue arrow points down to the product page. The product page has tabs for "Overview", "Features", "Specifications", and "Download". The "Download" tab is active, showing a list of documents under the "Document" category, with "Printer Compatibility List" highlighted. The "Image" and "Software" categories are also visible. A "Product Spotlight" section on the right highlights "300Mbps Wireless N ADSL2+ Modem Router, Now With Versatile USB Sharing" and "Flexible USB Sharing How to set-up?".

## 2. Where can I find the relevant software for installation?

Go to our website [www.tp-link.com](http://www.tp-link.com), then go to **Products** ->**ADSL**, find your product model and go to **Download** ->**Software** -> **Utility**. Then next web page will be loaded, where you can select the **USB Printer Controller\_Utility** and download it.



Utility		
<a href="#">TD-W8968_V1_USB Printer Controller Utility( For Windows)</a> ↓	<b>Published Date</b>	9/26/2012
	<b>Language</b>	English
	<b>File Size</b>	17.11 MB
	<b>Operating System</b>	WinXP/Vista/7
	<b>Notes</b>	For TD-W8968 v1; <b>This Utility doesn't work with the earlier firmware 120802.</b>
<a href="#">TD-W8968_v1_USB_Print Service_utility</a> ↓	<b>Published Date</b>	5/16/2012
	<b>Language</b>	English
	<b>File Size</b>	3.33 MB
	<b>Operating System</b>	Win2000/XP/2003/Vista/7
	<b>Notes</b>	Can't be used on Windows7 64bit
<a href="#">TD-W8968_v1_Easy_Set up_Assistant.</a> ↓	<b>Published Date</b>	5/16/2012
	<b>Language</b>	English
	<b>File Size</b>	10.10 MB
	<b>Operating System</b>	Win2000/XP/2003/Vista/7

### 3. How to manage the print server on the web-based management page?

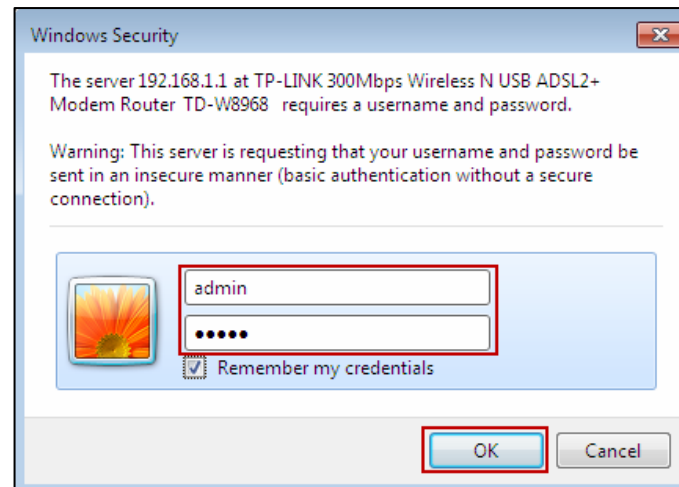
The modem router's Print Server function is enabled by default. To disable the function, you need to log onto the Web-based management page. See the following instructions (Here takes that in Windows 7 for example):

1) Make sure you have a PC or notebook connected to the modem router, either via wireless or wired connection.

2) Launch the TP-LINK USB Printer Controller, highlight the modem router and click the tab **Configure Server**.



3) After a moment, a login window will appear. Enter **admin** (in lower case letters) for both the User Name and Password. Then click the **OK** button or press the **Enter** key.



4) Go to **USB Settings -> Print Server**. Click **Stop** to disable the function. Click **Start** to enable the function.

**Print Server Settings**

Server Status: Online **Stop** 3. Click **Stop** to disable the function

1. Click **USB Settings**

2. Click **Print Server**

**Print Server Settings**

Server Status: Offline **Start** 3. Click **Start** to enable the function

1. Click **USB Settings**

2. Click **Print Server**