



AV1200

Gigabit Passthrough Powerline Adapter

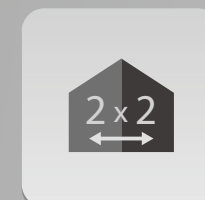
TL-PA8010P

Highlights

- **AV1200** – HomePlug AV2 standard compliant, high-speed data transfer rates of up to 1200Mbps, supports all your online needs
- **MIMO Technology** – Line-Neutral/Line-Ground 2×2 MIMO with beamforming ensures fast and stable connection
- **Gigabit Ethernet Port** – Gigabit Port creates secure wired networks for desktops, smart TVs or game consoles
- **Extra Power Outlet** – Integrated power socket ensures no power outlet goes to waste
- **Plug and Play** – Plug and play, no configuration required



HomePlug AV2
1200Mbps



2 x 2
MIMO



Extra Power
Socket



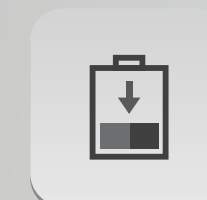
Gigabit
LAN Port



300
Meters



One Button
Security



Power
Save

Features

Speed

- Ultra-fast Powerline Speed – HomePlug AV2 standard compliant, high-speed data transfer rate of up to 1200Mbps, ideal for Ultra HD streaming and online gaming
- Gigabit Ethernet Port – Gigabit Ethernet Port allows your TVs, game consoles or PCs to connect to the Internet at high speeds

Energy Saving

- Power Save – Power Saving Mode helps reducing power consumption by up to 85%¹

Reliability

- MIMO Technology – Line-Neutral/Line-Ground 2×2 MIMO with beamforming ensures fast and stable connection
- Mains Filter – Mains Filter inside the outlet reduces electrical noise interference and improves powerline communication performance

Range

- 300-meter Range – Up to 300-meter range over the household power circuit

Ease of Use

- Plug and play – Plug and play, no configuration required
- No new wires – No new wires, use existing electrical wiring to expand your home network
- Extra Power Outlet – Embedded power socket makes power accessible to other devices

Security

- Pair Button – 128-bit AES encryption easily at a push of "Pair" Button

Specifications

Hardware

- **Transmission Speeds:** Powerline: up to 1200 Mbps
Ethernet: 10/100/1000 Mbps
- **Standards and Protocols:** HomePlug AV2, HomePlug AV, IEEE 1901, IEEE 802.3, IEEE 802.3u, IEEE 802.3ab
- **Interface:** 1 * Gigabit Ethernet Port, Power Socket
- **Plug Type:** EU
- **Button:** Pair Button
- **LED Indicator:** Power, Powerline, Ethernet
- **Item Dimensions (W x D x H):** 5.2x2.8x1.7 in. (131x72x42 mm)
- **Packing Dimensions (W x D x H)::** 7.5x4.9x3.9 in. (190x125x100 mm)
- **Access Methods:** CSMA/CA channel-access schemes
- **Frequency Band:** 2 MHz to 86 MHz
- **IGMP:** IGMP v1/v2/v3
- **Power Output to Integrated Socket:** 16 A
- **Power Consumption:** Maximum: 5.8 W (230V/50Hz)
Standby: 0.5 W (230V/50Hz)
- **Power Saving Mode:** When there is no Ethernet link in 300 seconds
- **Range:** 300 meters in house
- **Compatibility:** Compatible with all AV1200, AV1000, AV600, AV500 & AV200 powerline adapters

Software

- **Modulation Technology:** OFDM
- **Security:** 128-bit AES Encryption
- **Quality of Service (QoS):** ToS
Supports up to 4-level type QoS
Support up to 8-level VLAN priority field

Others

Package Contents

- AV1200 Gigabit Passthrough Powerline Adapter, TL-PA8010P
- 2-meter RJ-45 Ethernet Cable * 2
- Quick Installation Guide
- Resource CD

Certification

- CE, RoHS

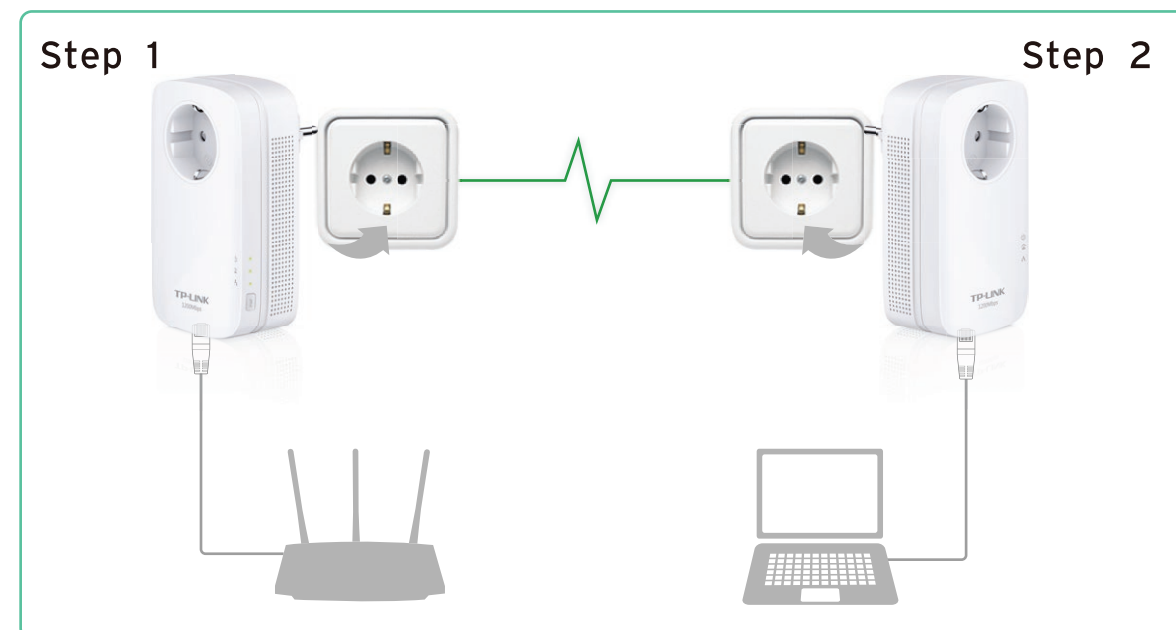
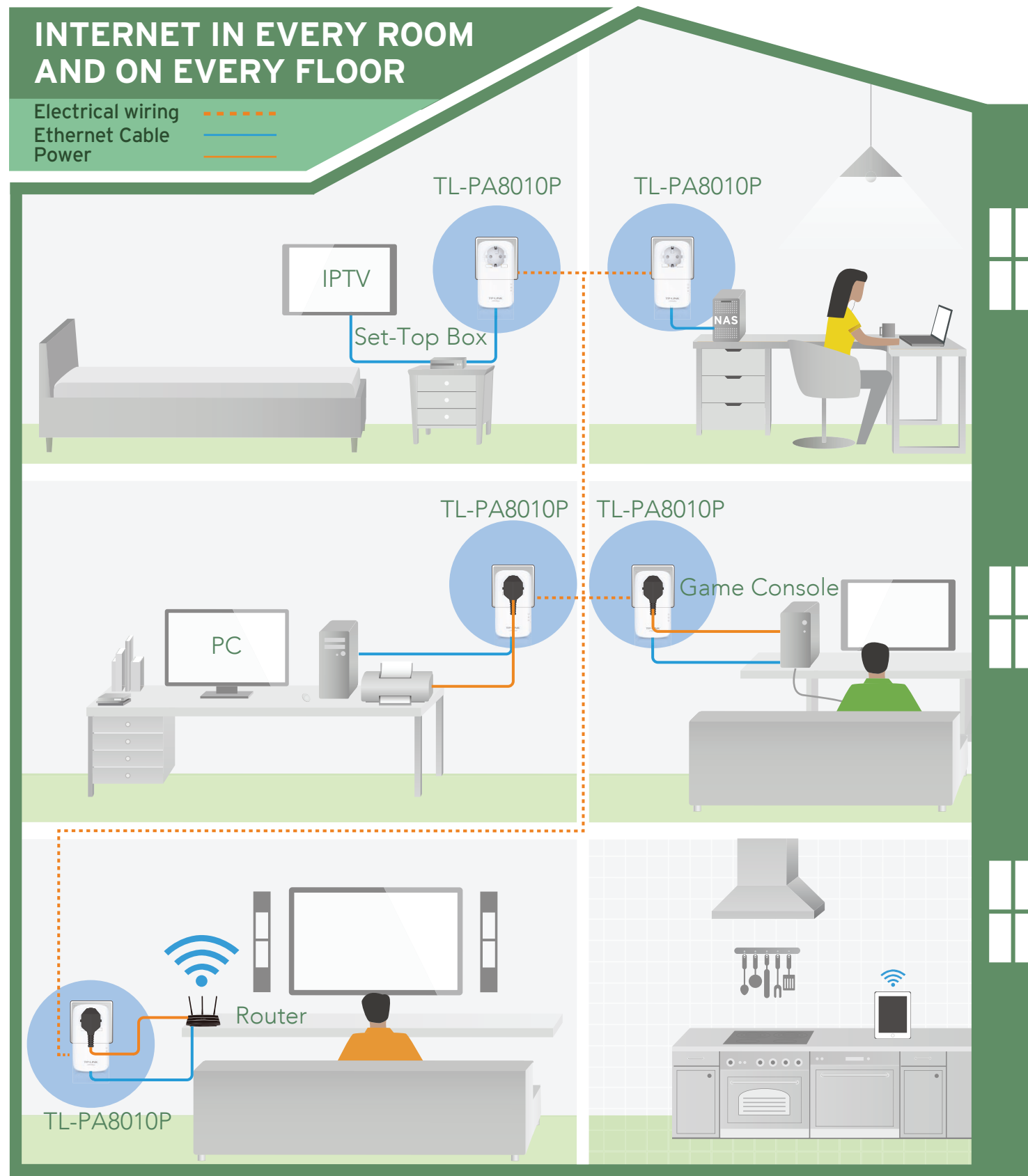
System Requirements

- Windows 8.1/8/7/Vista/XP, Mac OS, Linux²

Environment

- Operating Temperature: 0°C~40°C (32°F~104°F)
- Storage Temperature: -40°C ~70°C (-40°F ~158°F)
- Operating Humidity: 10%~90% non-condensing
- Storage Humidity: 5%~90% non-condensing

Diagrams



Note: Powerline adapters should be deployed on the same circuit and in set of two or more. The first, connected to the router and others located elsewhere to enable connectivity in those locations.

Others

Ideal to use with



- AC1900 Wireless Dual Band Gigabit Router Archer C9



- AC1750 Wireless Dual Band Gigabit Router Archer C8

Similar Products



- AV1200 3-Port Gigabit Passthrough Powerline Adapter TL-PA8030P



- 300Mbps AV500 WiFi Powerline Extender TL-WPA4220



For more information, please visit

<http://WWW.TP-LINK.COM/en/products/details/?model=TL-PA8010P>

or scan the QR code left

www.tp-link.com

Specifications are subject to change without notice. TP-LINK is a registered trademark of TP-LINK TECHNOLOGIES CO., LTD. Other brands and product names are trademarks or registered trademarks of their respective holders. No part of the specifications may be reproduced in any form or by any means or used to make any derivative such as translation, transformation, or adaptation without permission from TP-LINK TECHNOLOGIES CO., LTD.

¹ Actual data will vary because of the network conditions and environment factors.

² Utility supports Windows 8.1/8/7/Vista/XP and Mac OS X (10.7 or later) operating system for the present.