



# AV1200

3-Port Gigabit Passthrough Powerline Adapter

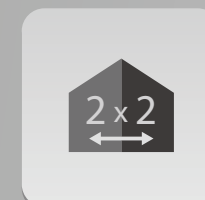
TL-PA8030P

## Highlights

- **AV1200** – HomePlug AV2 standard compliant, high-speed data transfer rates of up to 1200Mbps, supports all your online needs
- **MIMO Technology** – Line-Neutral/Line-Ground 2×2 MIMO with beamforming ensures fast and stable connection
- **Multiple Gigabit Ports** – 3 Gigabit Ports create secure wired networks for desktops, smart TVs or game consoles
- **Extra Power Outlet** – Integrated power socket ensures no power outlet goes to waste
- **Plug and Play** – Plug and play, no configuration required



HomePlug AV2  
1200Mbps



2 x 2  
MIMO



Extra Power  
Socket



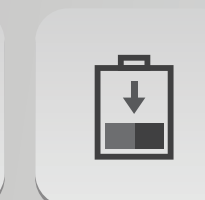
Gigabit  
LAN Port



300  
Meters



One Button  
Security



Power  
Save

# Features

## Speed

- Ultra-fast Powerline Speed – HomePlug AV2 standard compliant, high-speed data transfer rate of up to 1200Mbps, ideal for Ultra HD streaming and online gaming
- Multiple Gigabit Ports – 3 Gigabit Ethernet Ports allow your TVs, game consoles or PCs to connect to the Internet at high speeds

## Energy Saving

- Power Save – Power Saving Mode helps reducing power consumption by up to 85%<sup>1</sup>

## Reliability

- MIMO Technology – Line-Neutral/Line-Ground 2×2 MIMO with beamforming ensures fast and stable connection
- Mains Filter – Mains Filter inside the outlet reduces electrical noise interference and improves powerline communication performance

## Range

- 300-meter Range – Up to 300-meter range over the household power circuit

## Ease of Use

- Plug and play – Plug and play, no configuration required
- No new wires – No new wires, use existing electrical wiring to expand your home network
- Extra Power Outlet – Embedded power socket makes power accessible to other devices

## Security

- Pair Button – 128-bit AES encryption easily at a push of "Pair" Button

# Specifications

---

## Hardware

---

- **Transmission Speeds:** Powerline: up to 1200 Mbps  
Ethernet: 10/100/1000 Mbps
- **Standards and Protocols:** HomePlug AV2, HomePlug AV, IEEE 1901, IEEE 802.3, IEEE 802.3u, IEEE 802.3ab
- **Interface:** 3 \* Gigabit Ethernet Port, Power Socket
- **Plug Type:** EU
- **Button:** Pair Button
- **LED Indicator:** Power, Powerline, Ethernet
- **Item Dimensions (W x D x H):** 5.2x2.8x1.7 in. (131x72x42 mm)
- **Packing Dimensions ( W x D x H )::** 7.5x4.9x3.9 in. (190x125x100 mm)
- **Access Methods:** CSMA/CA channel-access schemes
- **Frequency Band:** 2 MHz to 86 MHz
- **IGMP:** IGMP v1/v2/v3
- **Power Output to Integrated Socket:** 16 A
- **Power Consumption:** Maximum: 5.8 W (230V/50Hz)  
Standby: 0.5 W (230V/50Hz)
- **Power Saving Mode:** When there is no Ethernet link in 300 seconds
- **Range:** 300 meters in house
- **Compatibility:** Compatible with all AV1200, AV1000, AV600, AV500 & AV200 powerline adapters

## Software

---

- **Modulation Technology:** OFDM
- **Security:** 128-bit AES Encryption
- **Quality of Service (QoS):** ToS  
Supports up to 4-level type QoS  
Support up to 8-level VLAN priority field

## Others

---

### Package Contents

- AV1200 3-Port Gigabit Passthrough Powerline Adapter, TL-PA8030P
- 2-meter RJ-45 Ethernet Cable \* 2
- Quick Installation Guide
- Resource CD

### Certification

- CE, RoHS

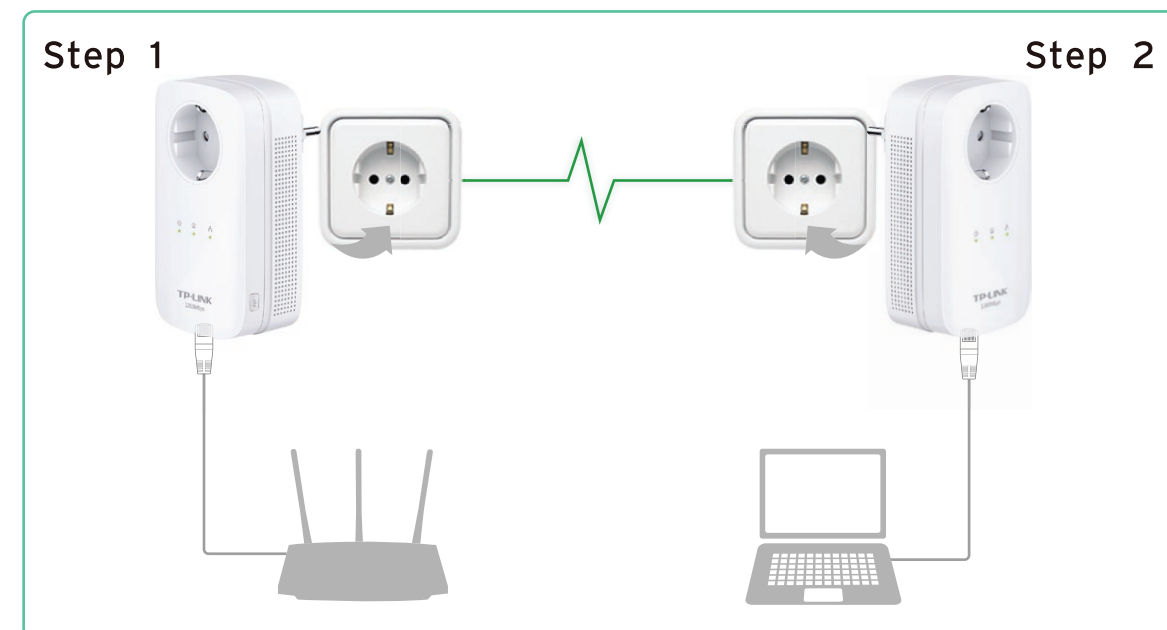
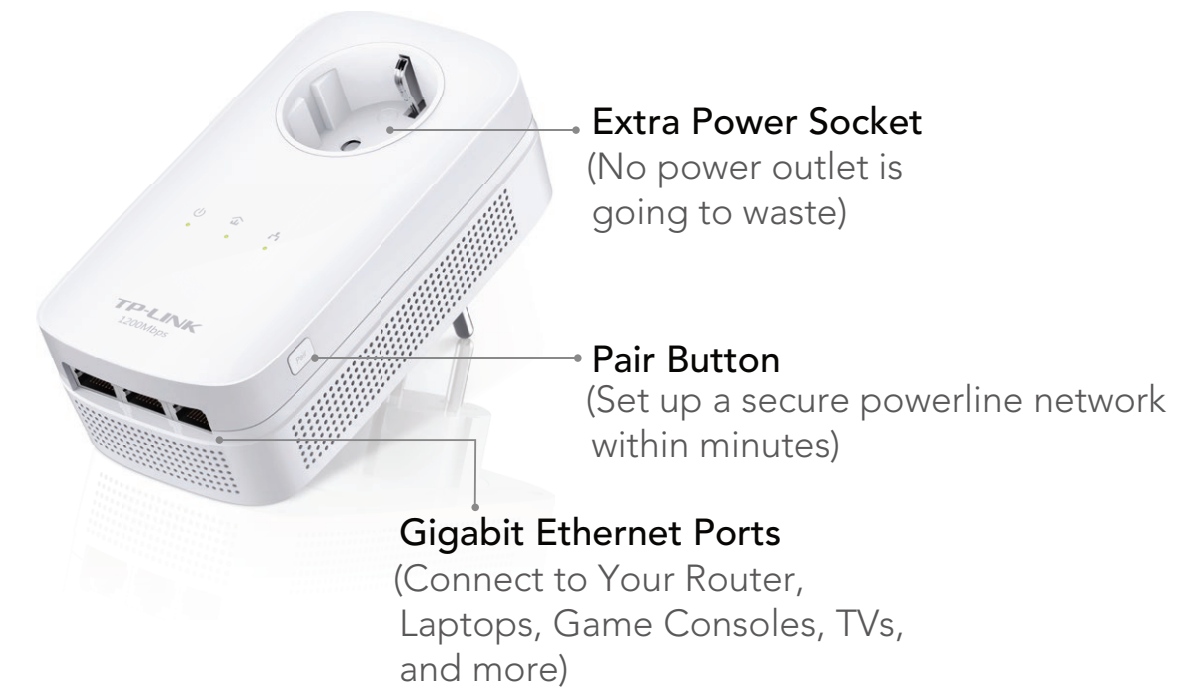
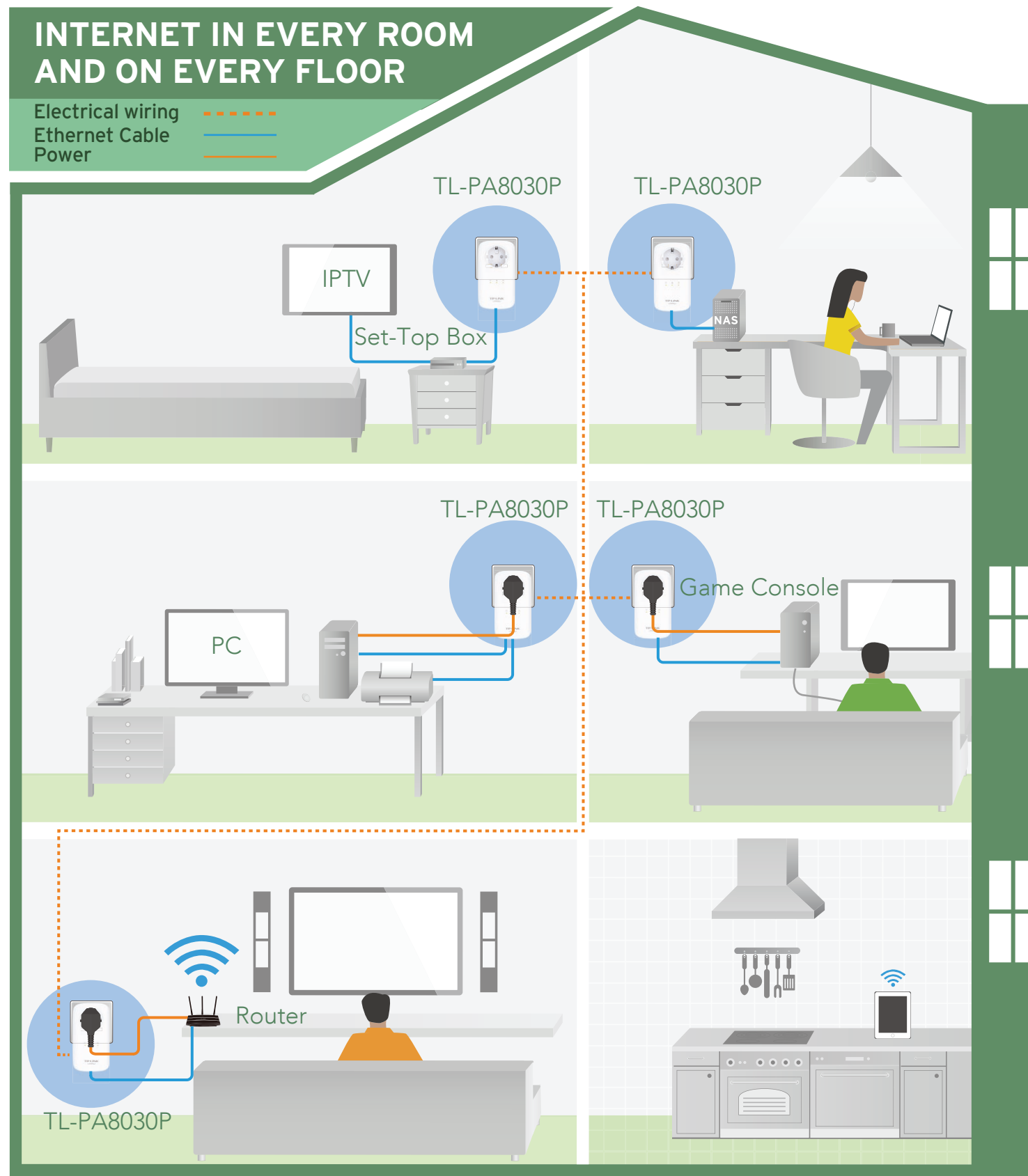
### System Requirements

- Windows 8.1/8/7/Vista/XP, Mac OS, Linux<sup>2</sup>

### Environment

- Operating Temperature: 0°C~40°C (32°F~104°F)
- Storage Temperature: -40°C ~70°C (-40°F ~158°F)
- Operating Humidity: 10%~90% non-condensing
- Storage Humidity: 5%~90% non-condensing

# Diagrams



**Note:** Powerline adapters should be deployed on the same circuit and in set of two or more. The first, connected to the router and others located elsewhere to enable connectivity in those locations.



# Others

## Ideal to use with



- AC1900 Wireless Dual Band Gigabit Router Archer C9



- AC1750 Wireless Dual Band Gigabit Router Archer C8

## Similar Products



- AV1200 Gigabit Passthrough Powerline Adapter TL-PA8010P



- 300Mbps AV500 WiFi Powerline Extender TL-WPA4220



For more information, please visit

<http://WWW.TP-LINK.COM/en/products/details/?model=TL-PA8030P>

or scan the QR code left

[www.tp-link.com](http://www.tp-link.com)

Specifications are subject to change without notice. TP-LINK is a registered trademark of TP-LINK TECHNOLOGIES CO., LTD. Other brands and product names are trademarks or registered trademarks of their respective holders. No part of the specifications may be reproduced in any form or by any means or used to make any derivative such as translation, transformation, or adaptation without permission from TP-LINK TECHNOLOGIES CO., LTD.

<sup>1</sup> Actual data will vary because of the network conditions and environment factors.

<sup>2</sup> Utility supports Windows 8.1/8/7/Vista/XP and Mac OS X (10.7 or later) operating system for the present.