



CLI Reference Guide

TL-SG3210/TL-SG3216/TL-SG3424

JetStream L2 Managed Switch



COPYRIGHT & TRADEMARKS

Specifications are subject to change without notice. **TP-LINK®** is a registered trademark of TP-LINK TECHNOLOGIES CO., LTD. Other brands and product names are trademarks or registered trademarks of their respective holders.

No part of the specifications may be reproduced in any form or by any means or used to make any derivative such as translation, transformation, or adaptation without permission from TP-LINK TECHNOLOGIES CO., LTD. Copyright © 2013 TP-LINK TECHNOLOGIES CO., LTD. All rights reserved.

<http://www.tp-link.com>

CONTENTS

Preface	1
Chapter 1 Using the CLI.....	4
1.1 Accessing the CLI.....	4
1.1.1 Logon by a console port	4
1.1.2 Logon by Telnet	6
1.2 CLI Command Modes.....	11
1.3 Security Levels	12
1.4 Conventions.....	13
1.4.1 Format Conventions	13
1.4.2 Special Characters.....	13
1.4.3 Parameter Format.....	13
Chapter 2 User Interface.....	15
enable.....	15
enable password	15
disable	16
configure.....	16
exit.....	16
end	17
Chapter 3 IEEE 802.1Q VLAN Commands.....	18
vlan.....	18
interface vlan	18
name	19
switchport mode	19
switchport access vlan.....	20
switchport trunk allowed vlan.....	20
switchport general allowed vlan.....	21
switchport pvid.....	22
show vlan summary.....	22
show vlan brief	23
show vlan	23
Chapter 4 MAC-based VLAN Commands.....	24
mac-vlan mac-address	24
show mac-vlan	24

Chapter 5	Protocol-based VLAN Commands.....	26
	protocol-vlan template	26
	protocol-vlan vlan	27
	protocol-vlan group.....	27
	show protocol-vlan template.....	28
	show protocol-vlan vlan	28
Chapter 6	Voice VLAN Commands	29
	voice vlan	29
	voice vlan aging time.....	29
	voice vlan priority.....	30
	voice vlan mac-address.....	30
	switchport voice vlan mode	31
	switchport voice vlan security	32
	show voice vlan	32
	show voice vlan oui	33
	show voice vlan switchport.....	33
Chapter 7	GVRP Commands	34
	gvrp(global)	34
	gvrp(interface)	34
	gvrp registration.....	35
	gvrp timer	35
	show gvrp global	36
	show gvrp interface	37
Chapter 8	Etherchannel Commands	38
	channel-group	38
	port-channel load-balance	39
	lacp system-priority	39
	lacp port-priority.....	40
	show etherchannel	40
	show etherchannel load-balance.....	41
	show lacp	41
	show lacp sys-id	42
Chapter 9	User Manage Commands.....	43
	user	43
	user access-control ip-based.....	44

user access-control mac-based.....	44
user access-control port-based	45
user max-number	46
user idle-timeout.....	46
line.....	47
password.....	48
login.....	48
login local	49
show user account-list.....	49
show user configuration.....	50
Chapter 10 Binding Table Commands.....	51
ip source binding	51
ip dhcp snooping	52
ip dhcp snooping global.....	53
ip dhcp snooping information option.....	54
ip dhcp snooping information strategy	54
ip dhcp snooping information remote-id.....	55
ip dhcp snooping information circuit-id	55
ip dhcp snooping trust	56
ip dhcp snooping mac-verify.....	57
ip dhcp snooping limit rate.....	57
ip dhcp snooping decline	58
show ip source binding	58
show ip dhcp snooping	59
show ip dhcp snooping information	59
show ip dhcp snooping interface gigabitEthernet	60
Chapter 11 ARP Inspection Commands.....	61
ip arp inspection(global)	61
ip arp inspection trust	61
ip arp inspection(interface)	62
ip arp inspection limit-rate.....	63
ip arp inspection recover	63
show ip arp inspection.....	64
show ip arp inspection interface	64
show ip arp inspection statistics	65
clear ip arp inspection statistics.....	65

Chapter 12 DoS Defend Command	66
ip dos-prevent.....	66
ip dos-prevent type.....	66
show ip dos-prevent	67
Chapter 13 IEEE 802.1X Commands.....	68
dot1x system-auth-control	68
dot1x auth-method	68
dot1x guest-vlan(global)	69
dot1x quiet-period.....	70
dot1x timeout.....	70
dot1x max-reauth-req	71
dot1x.....	71
dot1x guest-vlan(interface)	72
dot1x port-control	72
dot1x port-method	73
radius.....	74
radius server-account.....	75
show dot1x global.....	75
show dot1x interface	76
show radius accounting.....	76
show radius authentication	77
Chapter 14 System Log Commands	78
logging buffer.....	78
logging file flash.....	79
clear logging	79
logging host index	80
show logging local-config	81
show logging loghost.....	81
show logging buffer	81
show logging flash.....	82
Chapter 15 SSH Commands.....	83
ip ssh server	83
ip ssh version	83
ip ssh timeout	84
ip ssh max-client.....	84

ip ssh download.....	85
show ip ssh.....	85
Chapter 16 SSL Commands	87
ip http secure-server.....	87
ip http secure-server download certificate	87
ip http secure-server download key	88
show ip http secure-server	89
Chapter 17 MAC Address Commands	90
mac address-table static.....	90
mac address-table aging-time	91
mac address-table filtering	91
mac address-table max-mac-count	92
show mac address-table address.....	93
show mac address-table aging-time	93
show mac address-table max-mac-count interface gigabitEthernet	94
show mac address-table interface gigabitEthernet.....	94
show mac address-table mac-num.....	95
show mac address-table mac.....	95
show mac address-table vlan	96
Chapter 18 System Configuration Commands.....	97
system-time manual	97
system-time ntp.....	97
system-time dst predefined	99
system-time dst date	99
system-time dst recurring	100
hostname.....	101
location	102
contact-info.....	102
reset	103
reboot	103
copy running-config start-up config.....	103
copy startup-config tftp	104
copy tftp startup-config	104
firmware upgrade	105
ping	105
tracert	106

loopback interface	107
show system-time.....	107
show system-time dst.....	108
show system-time ntp.....	108
show system-info.....	109
show cable-diagnostics interface.....	109
Chapter 19 Ethernet Configuration Commands	110
interface gigabitEthernet.....	110
interface range gigabitEthernet	110
description	111
shutdown	111
flow-control	112
duplex.....	112
speed.....	113
storm-control broadcast.....	114
storm-control multicast	114
storm-control unicast	115
bandwidth	116
clear counters.....	116
show interface status.....	117
show interface counters.....	117
show interface description	118
show interface flowcontrol	118
show interface configuration.....	119
show storm-control	119
show bandwidth.....	120
Chapter 20 QoS Commands	121
qos	121
qos dscp.....	121
qos queue cos-map.....	122
qos queue dscp-map.....	123
qos queue mode.....	124
show qos interface	125
show qos cos-map	125
show qos dscp-map	126
show qos queue mode	126

show qos status.....	127
Chapter 21 Port Mirror Commands	128
monitor session destination interface	128
monitor session source interface	129
show monitor session	130
Chapter 22 Port isolation Commands	131
port isolation	131
show port isolation interface	131
Chapter 23 Loopback Detection Commands	133
loopback-detection(global)	133
loopback-detection interval.....	133
loopback-detection recovery-time.....	134
loopback-detection(interface)	134
loopback-detection config.....	135
loopback-detection recover	135
show loopback-detection global	136
show loopback-detection interface	136
Chapter 24 ACL Commands	138
time-range	138
absolute.....	138
periodic.....	139
holiday	140
holiday(global).....	140
access-list create.....	141
mac access-list.....	141
access-list standard.....	142
access-list extended	143
rule	144
access-list policy name.....	145
access-list policy action.....	146
redirect interface.....	146
redirect vlan.....	147
s-condition	147
s-mirror	148
qos-remark	148

access-list bind(interface).....	149
access-list bind(vlan).....	150
show time-range.....	150
show holiday.....	150
show access-list	151
show access-list policy	151
show access-list bind	152
Chapter 25 MSTP Commands	153
spanning-tree(global).....	153
spanning-tree(interface)	153
spanning-tree common-config	154
spanning-tree mode.....	155
spanning-tree mst configuration	155
instantce	156
name	157
revision	157
spanning-tree mst instance	158
spanning-tree mst.....	158
spanning-tree priority.....	159
spanning-tree tc-defend.....	160
spanning-tree timer.....	160
spanning-tree hold-count.....	161
spanning-tree max-hops	162
spanning-tree bpdfilter.....	162
spanning-tree bpduguard	163
spanning-tree guard loop.....	163
spanning-tree guard root	164
spanning-tree guard tc.....	164
spanning-tree mcheck	165
show spanning-tree active.....	165
show spanning-tree bridge	166
show spanning-tree interface	166
show spanning-tree interface-security	167
show spanning-tree mst	168
Chapter 26 IGMP Commands	169
ip igmp snooping(global)	169

ip igmp snooping(interface)	169
ip igmp snooping immediate-leave	170
ip igmp snooping drop-unknown.....	170
ip igmp snooping vlan-config	171
ip igmp snooping multi-vlan-config	172
ip igmp snooping filter add-id.....	173
ip igmp snooping filter(global).....	174
ip igmp snooping filter(interface)	174
ip igmp snooping filter maxgroup.....	175
ip igmp snooping filter mode.....	175
show ip igmp snooping	176
show ip igmp snooping interface	176
show ip igmp snooping vlan	177
show ip igmp snooping multi-vlan.....	178
show ip igmp snooping groups	178
show ip igmp snooping filter	179
Chapter 27 SNMP Commands.....	180
snmp-server	180
snmp-server view	180
snmp-server group	181
snmp-server user	182
snmp-server community	184
snmp-server host.....	184
snmp-server engineID	186
rmon history.....	186
rmon event	187
rmon alarm	188
show snmp-server	190
show snmp-server view	190
show snmp-server group.....	190
show snmp-server user	191
show snmp-server community.....	191
show snmp-server host	192
show snmp-server engineID.....	192
show rmon history	192
show rmon event.....	193
show rmon alarm.....	193

Chapter 28 Cluster Commands.....	195
cluster ndp.....	195
cluster ntdp.....	196
cluster explore.....	197
cluster.....	197
cluster candidate.....	198
cluster individual.....	198
show cluster ndp.....	199
show cluster ntdp.....	199
show cluster neighbour.....	200
show cluster manage role.....	200

Preface

This Guide is intended for network administrator to provide referenced information about CLI (Command Line Interface). The switch or TL-SG3210/TL-SG3216/TL-SG3424 mentioned in this Guide stands for TL-SG3210/TL-SG3216/TL-SG3424 JetStream L2 Managed Switch without any explanation.

The three devices of TL-SG3210, TL-SG3216 and TL-SG3424 are sharing this Guide. For simplicity, we will take TL-SG3424 for example throughout this Guide. TL-SG3210, TL-SG3216 and TL-SG3424 just differ in the number of LED indicators and ports and all figures in this guide are of TL-SG3424.

Overview of this Guide

Chapter 1: Using the CLI

Provide information about how to use the CLI, CLI Command Modes, Security Levels and some Conventions.

Chapter 2: User Interface

Provide information about the commands used to switch between five CLI Command Modes.

Chapter 3: IEEE 802.1Q VLAN Commands

Provide information about the commands used for configuring IEEE 802.1Q VLAN.

Chapter 4: MAC-Based VLAN Commands

Provide information about the commands used for configuring MAC-Based VLAN.

Chapter 5: Protocol-Based VLAN Commands

Provide information about the commands used for configuring Protocol-Based VLAN.

Chapter 6: Voice VLAN Commands

Provide information about the commands used for configuring Voice VLAN.

Chapter 7: GVRP Commands

Provide information about the commands used for configuring GVRP (GARP VLAN registration protocol).

Chapter 8: Etherchannel Commands

Provide information about the commands used for configuring LAG (Link Aggregation Group) and LACP (Link Aggregation Control Protocol).

Chapter 9: User Manage Commands

Provide information about the commands used for user management.

Chapter 10: Binding Table Commands

Provide information about the commands used for binding the IP address, MAC address, VLAN and the connected Port number of the Host together. Besides it also provide information about the

commands used for monitoring the process of the Host obtaining the IP address from DHCP server, and record the IP address, MAC address, VLAN and the connected Port number of the Host for automatic binding.

Chapter 11: ARP Inspection Commands

Provide information about the commands used for protecting the switch from the ARP cheating or ARP Attack.

Chapter 12: DoS Defend Command

Provide information about the commands used for DoS defend and detecting the DoS attack.

Chapter 13: IEEE 802.1X Commands

Provide information about the commands used for configuring IEEE 802.1X function.

Chapter 14: System Log Commands

Provide information about the commands used for configuring system log.

Chapter 15: SSH Commands

Provide information about the commands used for configuring and managing SSH (Security Shell).

Chapter 16: SSL Commands

Provide information about the commands used for configuring and managing SSL (Secure Sockets Layer).

Chapter 17: MAC Address Commands

Provide information about the commands used for Address configuration.

Chapter 18: System Configuration Commands

Provide information about the commands used for configuring the System information and System IP, reboot and reset the switch, upgrade the switch system and commands used for device diagnose, including loopback test and cable test.

Chapter 19: Ethernet Configuration Commands

Provide information about the commands used for configuring the Bandwidth Control, Negotiation Mode, and Storm Control for Ethernet ports.

Chapter 20: QoS Commands

Provide information about the commands used for configuring the QoS function.

Chapter 21: Port Mirror Commands

Provide information about the commands used for configuring the Port Mirror function.

Chapter 22: Port Isolation Commands

Provide information about the commands used for configuring the Port Isolation function.

Chapter 23: Loopback Detection Commands

Provide information about the commands used for configuring the Loopback Detection function.

Chapter 24: ACL Commands

Provide information about the commands used for configuring the ACL (Access Control List).

Chapter 25: MSTP Commands

Provide information about the commands used for configuring the MSTP (Multiple Spanning Tree Protocol).

Chapter 26: IGMP Commands

Provide information about the commands used for configuring the IGMP Snooping (Internet Group Management Protocol Snooping).

Chapter 27: SNMP Commands

Provide information about the commands used for configuring the SNMP (Simple Network Management Protocol) functions.

Chapter 28: Cluster Commands

Provide information about the commands used for configuring the Cluster Management function.

Chapter 1 Using the CLI

1.1 Accessing the CLI

You can log on to the switch and access the CLI by the following two methods:

1. Log on to the switch by the console port on the switch.
2. Log on to the switch remotely by a Telnet or SSH connection through an Ethernet port.

1.1.1 Logon by a console port

To log on to the switch by the console port on the switch, please take the following steps:

1. Connect the PCs or Terminals to the console port on the switch by a provided cable.
2. Click **Start** → **All Programs** → **Accessories** → **Communications** → **Hyper Terminal** to open the Hyper Terminal as the Figure 1-1 shown.

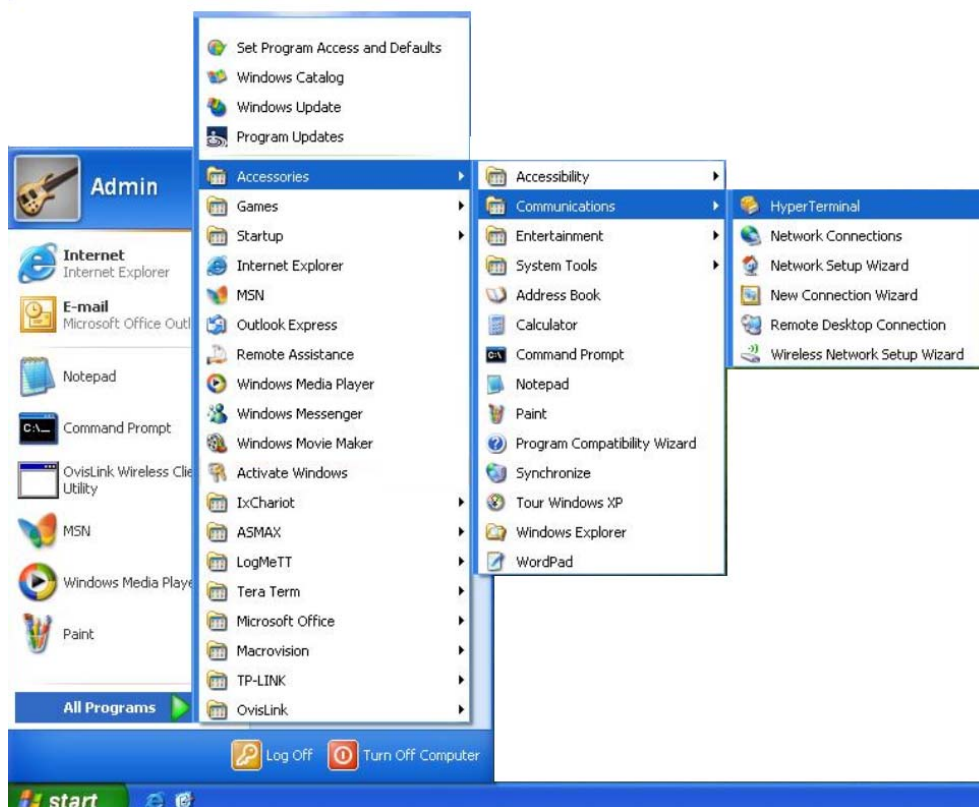


Figure 1-1 Open Hyper Terminal

3. The Connection Description Window will prompt as Figure 1-2 shown. Enter a name into the Name field and click **OK**.



Figure 1-2 Connection Description

4. Select the port to connect in Figure 1-3, and click **OK**.



Figure 1-3 Select the port to connect

5. Configure the port selected in the step above as the following Figure 1-4 shown. Configure **Bits per second** as 38400, **Data bits** as 8, **Parity** as None, **Stop bits** as 1, **Flow control** as None, and then click **OK**.

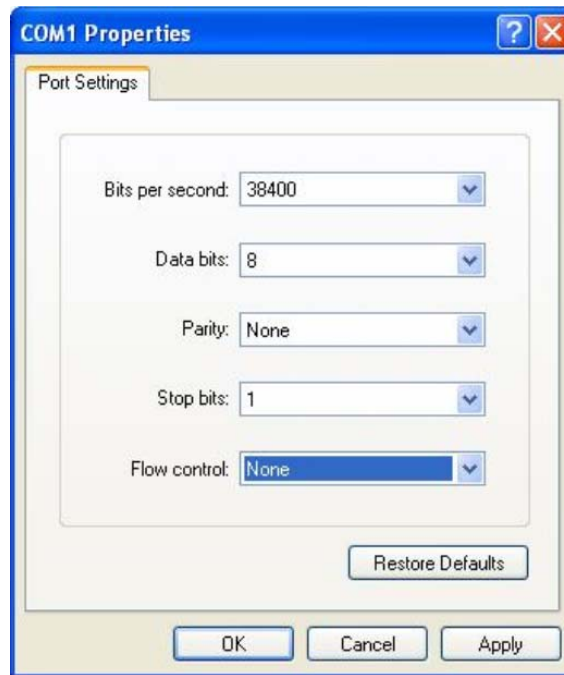


Figure 1-4 Port Settings

6. The DOS prompt "TL-SG3424>" will appear after pressing the **Enter** button as Figure 1-5 shown. It indicates that you can use the CLI now.

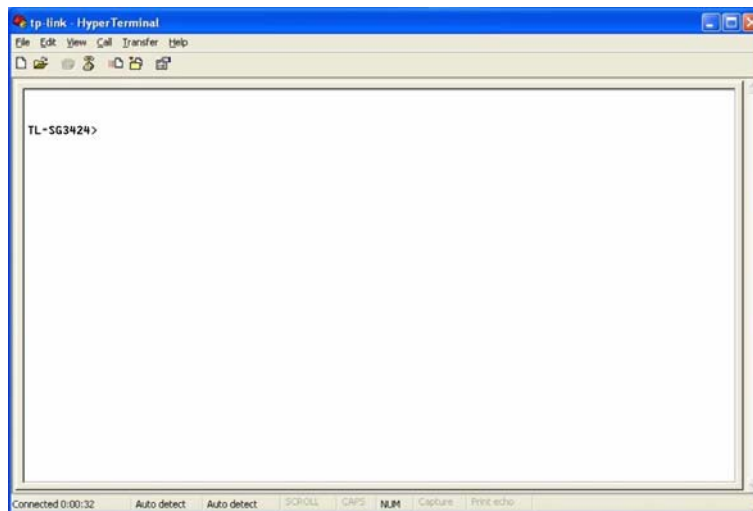


Figure 1-5 Log in the Switch

1.1.2 Logon by Telnet

To successfully create Telnet connection, firstly CLI commands about configuring Telnet login mode, login authentication information and Privileged EXEC Mode password should be configured through Console connection.

Telnet login has the following two modes, you can choose one according to your needs:

Login local Mode: It requires username and password, which are both **admin** by default.

Login Mode: It requires no username and password, but a connection password is required.

Note:

1. Before Telnet login, you are required to configure Telnet login mode and login authentication information through **Console connection**. The relevant CLI commands should be entered in the prompted DOS screen shown in [Figure 1-5 Log in the Switch](#).
2. You will enter to User EXEC Mode after Telnet connection is successfully created, but for switch security concerns, you are required to set a password which functions to further access to Privileged EXEC Mode when you configure the login mode.

➤ **Login Local Mode**

Firstly, configure the Telnet login mode as “**login local**” and set the password for entering into the Privileged EXEC Mode as **123** in the prompted DOS screen shown in Figure 1-6.

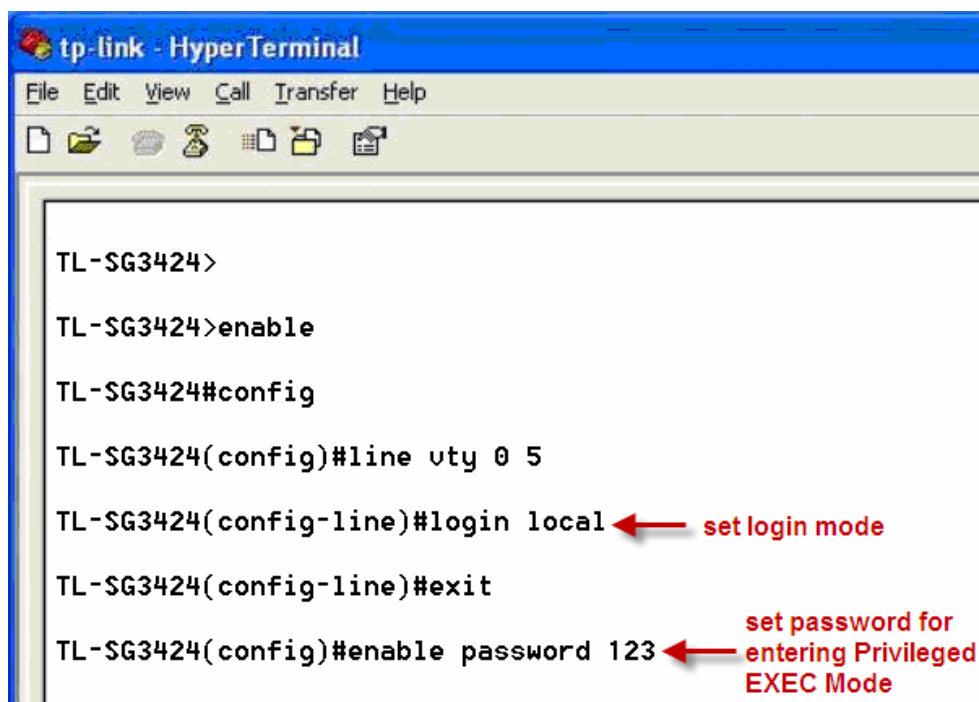


Figure 1-6 Configure login local mode

Now, you can login by Telnet in **login local** mode.

1. Make sure the switch and the PC are in the same LAN. Click **Start** → **Run** to open the **Run** window, and type **cmd** in the prompt Run window as Figure 1-7 and click **OK**.

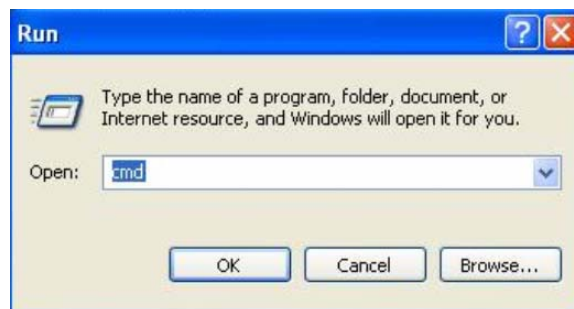


Figure 1-7 Run Window

2. Open Telnet, then type **telnet 192.168.0.1** in the command prompt shown as Figure 1-8, and press the **Enter** button.

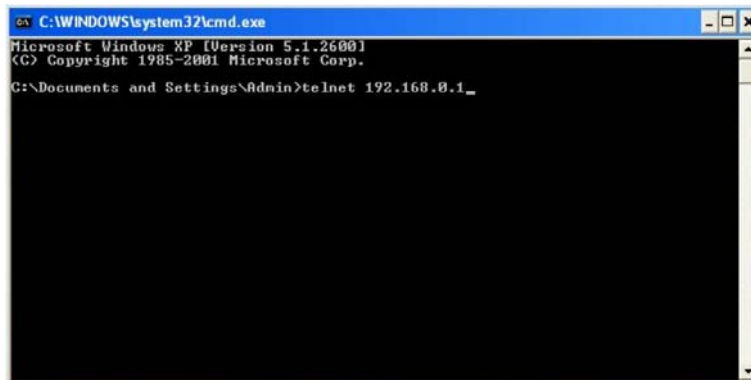


Figure 1-8 Connecting to the Switch

3. Type the default user name and password **admin/admin**, then press the **Enter** button so as to enter User EXEC Mode.

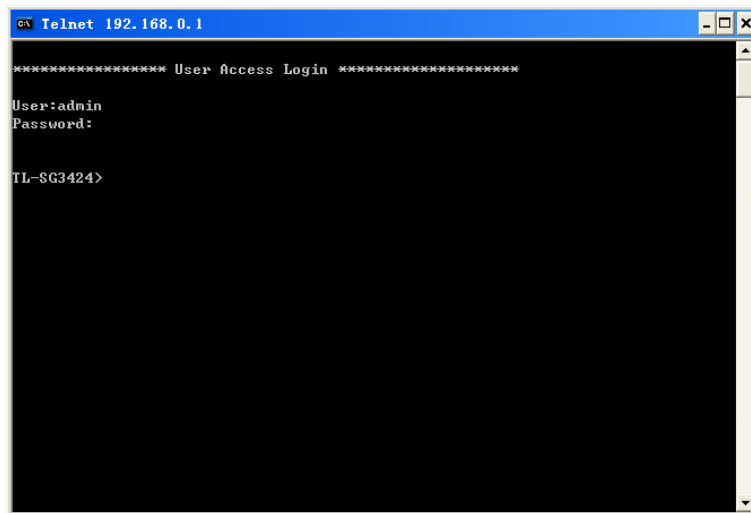


Figure 1-9 Enter into the User EXEC Mode

Now you can manage your switch with CLI commands through Telnet connection.

4. Type **enable** command to enter Privileged EXEC Mode. A password that you have set through Console port connection is required. Here the password is set as **123**.

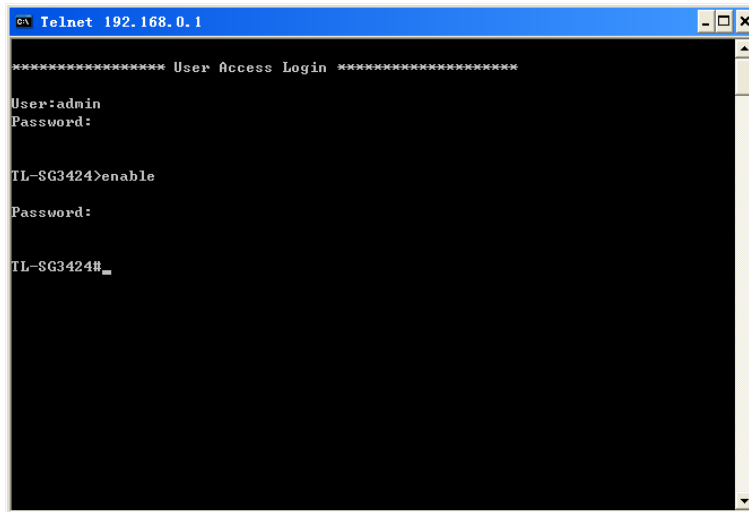


Figure 1-10 Enter into the Privileged EXEC Mode

➤ Login Mode

Firstly configure the Telnet login mode as “**login**”, and both the connection password and the Privileged EXEC Mode password as **123** in the prompted DOS screen shown in Figure 1-11.

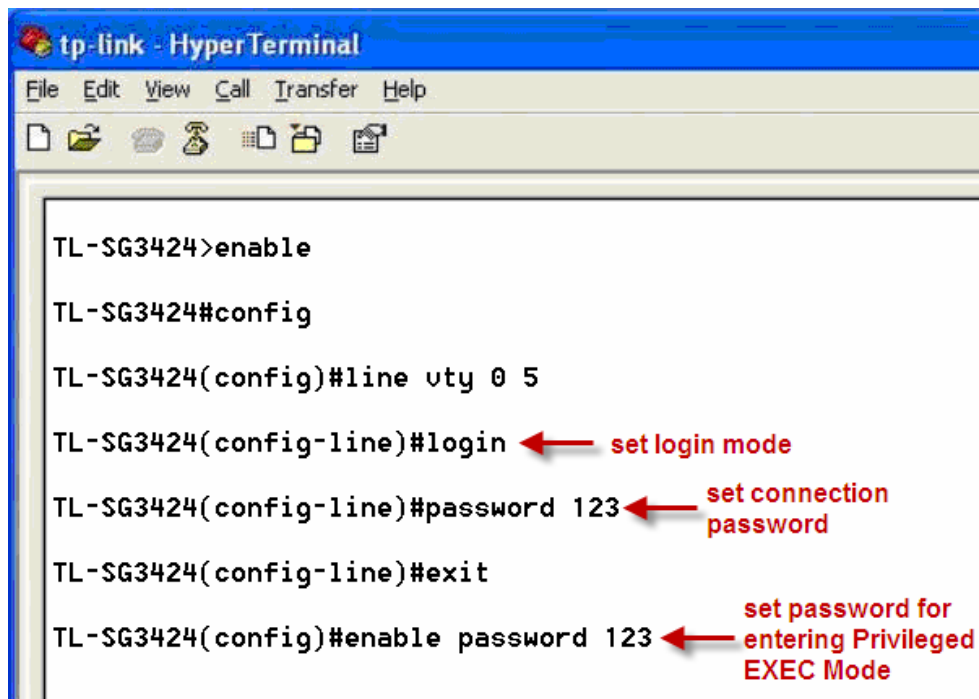


Figure 1-11 Configure login mode

Now, you can login by Telnet in **login mode**:

1. Open Telnet, then type **telnet 192.168.0.1** in the command prompt shown as Figure 1-12, and press the **Enter** button.

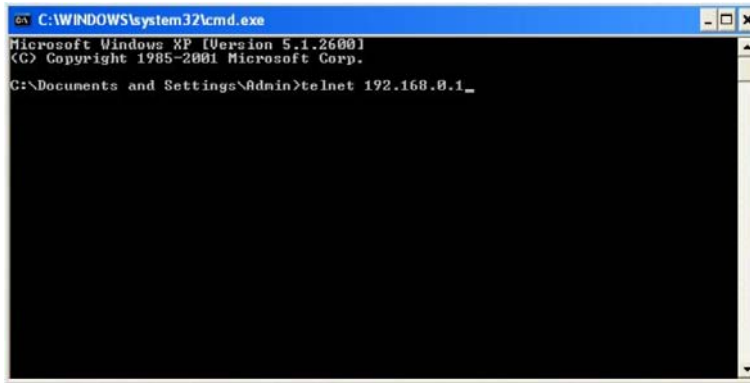


Figure 1-12 Connecting to the Switch

2. You are prompted to enter the connection password **123** you have set through Console port connection, and then you are in User EXEC Mode.

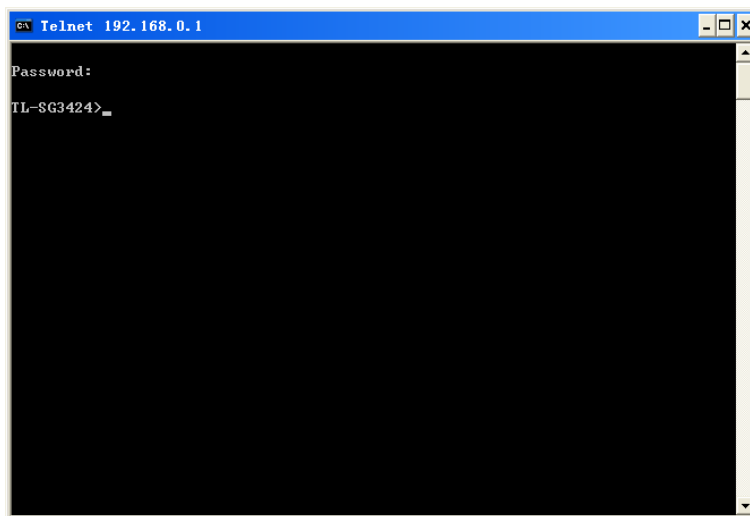


Figure 1-13 Enter into the User EXEC Mode

3. When entering **enable** command to access Privileged EXEC Mode, you are required to give the password **123** you have set through Console port connection.

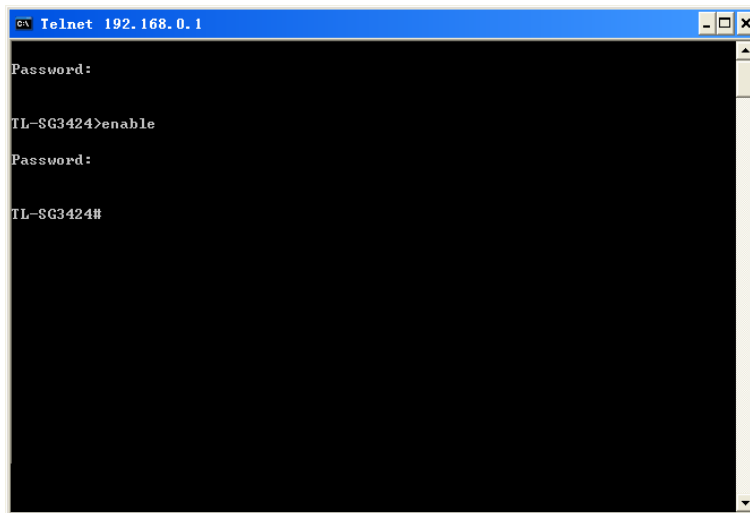


Figure 1-14 Enter into the Privileged EXEC Mode

Now you can manage your switch with CLI commands through Telnet connection.

Note:

You can refer to [Chapter 9 User Manage Commands](#) for detailed commands information of the Telnet connection configuration.

1.2 CLI Command Modes

The CLI is divided into different command modes: User EXEC Mode, Privileged EXEC Mode, Global Configuration Mode, Interface Configuration Mode and VLAN Configuration Mode. Interface Configuration Mode can also be divided into Interface gigabitEthernet, Interface link-aggregation and some other modes, which is shown as the following diagram.

The following table gives detailed information about the Accessing path, Prompt of each mode and how to exit the current mode and access the next mode.

Mode	Accessing Path	Prompt	Logout or Access the next mode
User EXEC Mode	Primary mode once it is connected with the switch.	TL-SG3424>	Use the exit command to disconnect the switch (except that the switch is connected through the Console port). Use the enable command to access Privileged EXEC mode.
Privileged EXEC Mode	Use the enable command to enter this mode from User EXEC mode.	TL-SG3424#	Use the exit command to disconnect the switch (except that the switch is connected through the Console port). Enter the disable command to return to User EXEC mode. Enter configure command to access Global Configuration mode.
Global Configuration Mode	Use the configure command to enter this mode from Privileged EXEC mode.	TL-SG3424(config)#	Use the exit or the end command or press Ctrl+Z to return to Privileged EXEC mode. Use the interface gigabitEthernet port or interface range gigabitEthernet port-list command to access interface Configuration mode. Use the vlan vlan-list to access VLAN Configuration mode.
Interface Configuration Mode	Use the interface gigabitEthernet port or interface range gigabitEthernet port-list command to enter this mode from Global Configuration mode.	TL-SG3424(config-if) # or TL-SG3424(config-if-range)#	Use the end command or press Ctrl+Z to return to Privileged EXEC mode. Enter the exit or the # command to return to Global Configuration mode. A port number must be specified in the interface command.

VLAN Configuration Mode	Use the vlan <i>vlan-list</i> command to enter this mode from Global Configuration mode.	TL-SG3424(config-vlan)#	Use the end command or press Ctrl+Z to return to Privileged EXEC mode. Enter the exit or the # command to return to Global configuration mode.
-------------------------	---	--------------------------------	---

Note:

1. The user is automatically in User EXEC Mode after the connection between the PC and the switch is established by a console port or by a telnet connection.
2. Each command mode has its own set of specific commands. To configure some commands, you should access the corresponding command mode firstly.
 - **Global Configuration Mode:** In this mode, global commands are provided, such as the Spanning Tree, Schedule Mode and so on.
 - **Interface Configuration Mode:** In this mode, users can configure one or several ports, different ports corresponds to different commands
 - a). Interface gigabitEthernet: Configure parameters for an Ethernet port, such as Duplex-mode, flow control status.
 - b). Interface range gigabitEthernet: The commands contained are the same as that of the Interface Ethernet. Configure parameters for several Ethernet ports.
 - c). Interface link-aggregation: Configure parameters for a link-aggregation, such as broadcast storm.
 - d). Interface range link-aggregation: Configure parameters for multi-trunks.
 - e). Interface vlan: Configure parameters for the vlan-port.
 - **Vlan Configuration Mode:** In this mode, users can create a VLAN and add a specified port to the VLAN.
3. Some commands are global, that means they can be performed in all modes:
 - **show:** Displays all information of switch, for example: statistic information, port information, VLAN information.
 - **history:** Displays the commands history.

1.3 Security Levels

This switch's security is divided into two levels: User level and Admin level.

User level only allows users to do some simple operations in User EXEC Mode; Admin level allows you to monitor, configure and manage the switch in Privileged EXEC Mode, Global Configuration Mode, Interface Configuration Mode and VLAN Configuration Mode.

Users get the privilege to the User level once connecting console port with the switch or logging in by Telnet. However, Guest users are restricted to access the CLI.

Users can enter Privileged EXEC mode from User EXEC mode by using the **enable** command. In default case, no password is needed. In Global Configuration Mode, you can configure password for Admin level by **enable password** command. Once password is configured, you are required to enter it to access Privileged EXEC mode.

1.4 Conventions

1.4.1 Format Conventions

The following conventions are used in this Guide:

- Items in square brackets [] are optional
- Items in braces { } are required
- Alternative items are grouped in braces and separated by vertical bars. For example: **speed** {10 | 100 | 1000 }
- Bold indicates an unalterable keyword. For example: **show logging**
- Normal Font indicates a constant (several options are enumerated and only one can be selected). For example: **switchport type** { access | trunk | general }
- Italic Font indicates a variable (an actual value must be assigned). For example: **bridge aging-time** *aging-time*

1.4.2 Special Characters

You should pay attentions to the description below if the variable is a character string:

- These six characters " < > , \ & can not be input.
- If a blank is contained in a character string, single or double quotation marks should be used, for example 'hello world', "hello world", and the words in the quotation marks will be identified as a string. Otherwise, the words will be identified as several strings.

1.4.3 Parameter Format

Some parameters must be entered in special formats which are shown as follows:

- MAC Address must be entered in the format of xx:xx:xx:xx:xx:xx
- One or several values can be typed for a port-list or a vlan-list using comma to separate. Use a hyphen to designate a range of values, for instance 1, 3-5,7 indicates choosing 1,3,4,5,7.

- The port number should format as 1/0/3, meaning unit/slot/port. The unit number is always 1, and slot number is always 0 and the port number is a variable (an actual value must be assigned).

Chapter 2 User Interface

enable

Description

The **enable** command is used to access Privileged EXEC Mode from User EXEC Mode.

Syntax

enable

Command Mode

User EXEC Mode

Example

If you have set the password to access Privileged EXEC Mode from User EXEC Mode:

```
TL-SG3424> enable
Enter password:
TL-SG3424#
```

enable password

Description

The **enable password** command is used to set the password for users to access Privileged EXEC Mode from User EXEC Mode. To return to the default configuration, please use **no enable password** command.

Syntax

enable password *password*
no enable password

Parameter

password — super password, which contains 16 characters at most, composing digits, English letters and underdashes only. By default, it is empty.

Command Mode

Global Configuration Mode

Example

Set the super password as admin to access Privileged EXEC Mode from User EXEC Mode:

```
TL-SG3424(config)# enable password admin
```

disable

Description

The **disable** command is used to return to User EXEC Mode from Privileged EXEC Mode.

Syntax

disable

Command Mode

Privileged EXEC Mode

Example

Return to User EXEC Mode from Privileged EXEC Mode:

```
TL-SG3424# disable
TL-SG3424>
```

configure

Description

The **configure** command is used to access Global Configuration Mode from Privileged EXEC Mode.

Syntax

configure

Command Mode

Privileged EXEC Mode

Example

Access Global Configuration Mode from Privileged EXEC Mode:

```
TL-SG3424# configure
TL-SG3424(config)#
```

exit

Description

The **exit** command is used to return to the previous Mode from the current Mode.

Syntax

exit

Command Mode

Any Configuration Mode

Example

Return to Global Configuration Mode from Interface Configuration Mode, and then return to Privileged EXEC Mode:

```
TL-SG3424(config-if)# exit
TL-SG3424(config)# exit
TL-SG3424#
```

end

Description

The **end** command is used to return to Privileged EXEC Mode.

Syntax

```
end
```

Command Mode

Any Configuration Mode

Example

Return to Privileged EXEC Mode from Interface Configuration Mode:

```
TL-SG3424(config-if)# end
TL-SG3424#
```

Chapter 3 IEEE 802.1Q VLAN Commands

VLAN (Virtual Local Area Network) technology is developed for the switch to divide the LAN into multiple logical LANs flexibly. Hosts in the same VLAN can communicate with each other, regardless of their physical locations. VLAN can enhance performance by conserving bandwidth, and improve security by limiting traffic to specific domains.

vlan

Description

The **vlan** command is used to create IEEE 802.1Q VLAN and enter VLAN Configuration Mode. To delete the IEEE 802.1Q VLAN, please use **no vlan** command.

Syntax

```
vlan vlan-list  
no vlan vlan-list
```

Parameter

vlan-list — Specify IEEE 802.1Q VLAN ID list, ranging from 2 to 4094, in the format of 2-3, 5. It is multi-optional.

Command Mode

Global Configuration Mode

Example

Create VLAN 2-10 and VLAN 100:

```
TL-SG3424(config)# vlan 2-10,100
```

Delete VLAN 2:

```
TL-SG3424(config)# no vlan 2
```

interface vlan

Description

The **interface vlan** command is used to create VLAN Interface and enter Interface VLAN Mode. To delete VLAN Interface, please use **no interface vlan** command.

Syntax

```
interface vlan vlan-id  
no interface vlan vlan-id
```

Parameter

vlan-id — Specify IEEE 802.1Q VLAN ID, ranging from 1 to 4094.

Command Mode

Global Configuration Mode

Example

Create VLAN Interface 2:

```
TL-SG3424(config)# interface vlan 2
```

name

Description

The **name** command is used to assign a description to a VLAN. To clear the description, please use **no name** command.

Syntax

name *descript*

no name

Parameter

descript —String to describe the VLAN, which contains 16 characters at most.

Command Mode

VLAN Configuration Mode (VLAN)

Example

Specify the name of VLAN 2 as “group1”:

```
TL-SG3424(config)# vlan 2
```

```
TL-SG3424(config-vlan)# name group1
```

switchport mode

Description

The **switchport mode** command is used to configure the Link Type for the ports.

Syntax

switchport mode { access | trunk | general }

Parameter

access | trunk | general — Link Types. There are three Link Types for the ports.

Command Mode

Interface Configuration Mode (interface gigabitEthernet / interface range gigabitEthernet)

Example

Specify the Link Type of port 3 as trunk:

```
TL-SG3424(config)# interface gigabitEthernet 1/0/3
TL-SG3424(config-if)# switchport mode trunk
```

switchport access vlan

Description

The **switchport access vlan** command is used to add the desired Access port to IEEE 802.1Q VLAN. To remove the specified port/ports from the corresponding VLAN, please use **no switchport access vlan** command.

Syntax

```
switchport access vlan vlan-id
no switchport access vlan
```

Parameter

vlan-id —— Specify IEEE 802.1Q VLAN ID, ranging from 2 to 4094.

Command Mode

Interface Configuration Mode (interface gigabitEthernet / interface range gigabitEthernet)

Example

Specify the Link Type of port 3 as access and add it to VLAN 2:

```
TL-SG3424(config)# interface gigabitEthernet 1/0/3
TL-SG3424(config-if)# switchport mode access
TL-SG3424(config-if)# switchport access vlan 2
```

switchport trunk allowed vlan

Description

The **switchport trunk allowed vlan** command is used to add the desired Trunk port to IEEE 802.1Q VLAN. To delete the corresponding VLAN/VLANs, please use **no switchport trunk allowed vlan** command.

Syntax

```
switchport trunk allowed vlan vlan-list
```


no switchport trunk allowed vlan *vlan-list*

Parameter

vlan-list — Specify IEEE 802.1Q VLAN ID list, ranging from 2 to 4094, in the format of 2-3, 5. It is multi-optional.

Command Mode

Interface Configuration Mode (interface gigabitEthernet / interface range gigabitEthernet)

Example

Specify the Link Type of port 2 as trunk and add it to VLAN 2:

```
TL-SG3424(config)# interface gigabitEthernet 1/0/2
TL-SG3424(config-if)# switchport mode trunk
TL-SG3424(config-if)# switchport trunk allowed vlan 2
```

switchport general allowed vlan

Description

The **switchport general allowed vlan** command is used to add the desired General port to IEEE 802.1Q VLAN and specify the egress rule. To delete the corresponding VLAN/VLANs, please use **no switchport general allowed vlan** command.

Syntax

```
switchport general allowed vlan vlan-list { tagged | untagged }
no switchport general allowed vlan vlan-list
```

Parameter

vlan-list — Specify IEEE 802.1Q VLAN ID list, ranging from 2 to 4094, in the format of 2-3, 5. It is multi-optional.

tagged | untagged — Egress rule, untagged or tagged. **Tagged**: All packets forwarded by the port are tagged. The packets contain VLAN information. **Untagged**: Packets forwarded by the port are untagged.

Command Mode

Interface Configuration Mode (interface gigabitEthernet / interface range gigabitEthernet)

Example

Specify the Link Type of port 4 as general, then add it to VLAN 2 and configure the egress rule of port 4 as tagged:

```
TL-SG3424(config)# interface gigabitEthernet 1/0/4
TL-SG3424(config-if)# switchport mode general
```

```
TL-SG3424(config-if)# switchport general allowed vlan 2 tagged
```

switchport pvid

Description

The **switchport pvid** command is used to configure the PVID for the switch ports.

Syntax

```
switchport pvid vlan-id
```

Parameter

vlan-id — Specify IEEE 802.1Q VLAN ID, ranging from 1 to 4094.

Command Mode

Interface Configuration Mode (interface gigabitEthernet / interface range gigabitEthernet)

Example

Specify the PVID of port 3 as 1:

```
TL-SG3424(config)# interface gigabitEthernet 1/0/3
```

```
TL-SG3424(config-if)# switchport pvid 1
```

show vlan summary

Description

The **show vlan summary** command is used to display the summarized information of IEEE 802.1Q VLAN.

Syntax

```
show vlan summary
```

Command Mode

Privileged EXEC Mode and Any Configuration Mode

Example

Display the summarized information of IEEE 802.1Q VLAN:

```
TL-SG3424(config)# show vlan summary
```

show vlan brief

Description

The **show vlan brief** command is used to display the brief information of IEEE 802.1Q VLAN.

Syntax

```
show vlan brief
```

Command Mode

Privileged EXEC Mode and Any Configuration Mode

Example

Display the brief information of IEEE 802.1Q VLAN:

```
TL-SG3424(config)# show vlan brief
```

show vlan

Description

The **show vlan** command is used to display the detailed information of the specified IEEE 802.1Q VLAN. By default, the detailed information of all vlans will be displayed.

Syntax

```
show vlan [ id vlan-id ]
```

Parameter

vlan-id — Specify IEEE 802.1Q VLAN ID, ranging from 1 to 4094. It is multi-optional.

Command Mode

Privileged EXEC Mode and Any Configuration Mode

Example

Display the detailed information of all VLANs:

```
TL-SG3424(config)# show vlan
```

Display the detailed information of VLAN 2:

```
TL-SG3424(config)# show vlan id 2
```

Display the detailed information of VLAN 3-10:

```
TL-SG3424(config)# show vlan id 3-10
```

Chapter 4 MAC-based VLAN Commands

MAC-based VLAN (Virtual Local Area Network) is the way to classify the VLANs based on MAC Address. A MAC address corresponds to a VLAN ID. The untagged packets and the priority-tagged packets sourced from the MAC address will be tagged with this VLAN ID.

mac-vlan mac-address

Description

The **mac-vlan mac-address** command is used to create a MAC-based VLAN entry. To delete MAC-based VLAN entry, please use the **no mac-vlan mac-address** command.

Syntax

```
mac-vlan mac-address mac-addr vlan vlan-id [ description descript ]  
no mac-vlan mac-address mac-addr
```

Parameter

mac-addr —— MAC address, in the format of XX:XX:XX:XX:XX:XX.

vlan-id —— Specify IEEE 802.1Q VLAN ID, ranging from 1 to 4094.

descript —— Give a description of the MAC-based VLAN entry for identification, which contains 8 characters at most.

Command Mode

Global Configuration Mode

Example

Add an entry whose MAC address is 00:11:11:01:01:12 to VLAN 2, then name the MAC-base entry as "TP":

```
TL-SG3424(config)# mac-vlan mac-address 00:11:11:01:01:12 vlan 2  
description TP
```

show mac-vlan

Description

The **show mac-vlan** command is used to display the information of the MAC-based VLAN. MAC address and VLAN ID can be used to filter the displayed information.

Syntax

```
show mac-vlan { all | mac-address mac-addr | vlan vlan-id }
```

Command Mode

Privileged EXEC Mode and Any Configuration Mode

Parameter

mac-addr — MAC address, in the format of XX:XX:XX:XX:XX:XX.

vlan-id — Specify IEEE 802.1Q VLAN ID, ranging from 1 to 4094.

Example

Display the MAC-based VLAN table:

```
TL-SG3424(config)# show mac-vlan all
```

Display the MAC-based VLAN information of the entry whose MAC address is 00:11:11:01:01:12:

```
TL-SG3424(config)# show mac-vlan mac-address 00:11:11:01:01:12
```

Display the MAC-based VLAN information of the entry whose VLAN ID is 4:

```
TL-SG3424(config)# show mac-vlan vlan 4
```

Chapter 5 Protocol-based VLAN Commands

Protocol-based VLAN (Virtual Local Area Network) is the way to classify VLANs based on Protocols. A Protocol corresponds to a VLAN ID. The untagged packets and the priority-tagged packets matching the protocol template will be tagged with this VLAN ID.

protocol-vlan template

Description

The **protocol-vlan template** command is used to create Protocol-based VLAN template. To delete Protocol-based VLAN template, please use **no protocol-vlan template** command.

Syntax

```
protocol-vlan template name protocol-name ether-type type frame { 802_3 | ether_2 | snap | llc }  
no protocol-vlan template template-idx
```

Parameter

protocol-name — Give a name to the Protocol-based VLAN Template, which contains 8 characters at most.

type — The Ethernet protocol type in the protocol template, composing of 4 Hex integers.

802_3 | ether_2 | snap | llc — The frame type with 802_3, ether_2, snap, and llc options.

template-idx — The number of the Protocol-based VLAN Template. You can get the template corresponding to the number by the [show protocol-vlan template](#) command.

Command Mode

Global Configuration Mode

Example

Create a Protocol-based VLAN template named “TP” whose Ethernet protocol type is 0x2024 and frame type is EthernetII:

```
TL-SG3424(config)# protocol-vlan template name TP ether-type 2024  
frame ether_2
```

protocol-vlan vlan

Description

The **protocol-vlan vlan** command is used to create a Protocol-based VLAN. To delete a Protocol-based VLAN, please use **no protocol-vlan** command.

Syntax

```
protocol-vlan vlan vlan-id { template template-idx }  
no protocol-vlan vlan group-idx
```

Parameter

vlan-vid —— Specify IEEE 802.1Q VLAN ID, ranging from 1-4094.

template-idx ——The number of the Protocol-based VLAN Template. You can get the template corresponding to the number by the [show protocol-vlan template](#) command.

group-idx ——The number of the Protocol-based VLAN entry. You can get the Protocol-based VLAN entry corresponding to the number by the [show protocol-vlan vlan](#) command.

Command Mode

Global Configuration Mode

Example

Create Protocol-based VLAN 2 and bind it with Protocol-based VLAN Template 3:

```
TL-SG3424(config)# protocol-vlan vlan 2 template 3
```

protocol-vlan group

Description

The **protocol-vlan group** command is used to create a Protocol-based VLAN group. To delete a Protocol-based VLAN group, please use **no protocol-vlan group** command.

Syntax

```
protocol-vlan group group-id  
no protocol-vlan group group-id
```

Parameter

group-id ——The number of the Protocol-based VLAN entry. You can get the Protocol-based VLAN entry corresponding to the number by the **show protocol-vlan vlan** command.

Command Mode

Interface Configuration Mode (interface gigabitEthernet / interface range gigabitEthernet)

Example

Create Protocol-based VLAN group 2 which is binding with port 3:

```
TL-SG3424(config)# interface gigabitEthernet 1/0/3
TL-SG3424(config-if)# protocol-vlan group 2
```

show protocol-vlan template

Description

The **show protocol-vlan template** command is used to display the information of the Protocol-based VLAN templates.

Syntax

```
show protocol-vlan template
```

Command Mode

Privileged EXEC Mode and Any Configuration Mode

Example

Display the information of the Protocol-based VLAN templates:

```
TL-SG3424(config)# show protocol-vlan template
```

show protocol-vlan vlan

Description

The **show protocol-vlan vlan** command is used to display the information about Protocol-based VLAN entry.

Syntax

```
show protocol-vlan vlan
```

Command Mode

Privileged EXEC Mode and Any Configuration Mode

Example

Display information of the Protocol-based VLAN entry:

```
TL-SG3424(config)# show protocol-vlan vlan
```


Chapter 6 Voice VLAN Commands

Voice VLANs are configured specially for voice data stream. By configuring Voice VLANs and adding the ports with voice devices attached to voice VLANs, you can perform QoS-related configuration for voice data, ensuring the transmission priority of voice data stream and voice quality.

voice vlan

Description

The **voice vlan** command is used to enable Voice VLAN function. To disable Voice VLAN function, please use **no voice vlan** command.

Syntax

voice vlan *vlan-id*

no voice vlan

Parameter

vlan-id —— Specify IEEE 802.1Q VLAN ID, ranging from 2 to 4094.

Command Mode

Global Configuration Mode

Example

Enable the Voice VLAN function for VLAN 10:

```
TL-SG3424(config)# voice vlan 10
```

voice vlan aging time

Description

The **voice vlan aging time** command is used to set the aging time for a voice VLAN. To restore to the default aging time for the Voice VLAN, please use **no voice vlan aging time** command.

Syntax

voice vlan aging time *time*

no voice vlan aging time

Parameter

time —Aging time (in minutes) to be set for the Voice VLAN. It ranges from 1 to 43200 and the default value is 1440.

Command Mode

Global Configuration Mode

Example

Set the aging time for the Voice VLAN as 1 minute:

```
TL-SG3424(config)# voice vlan aging time 1
```

voice vlan priority

Description

The **voice vlan priority** command is used to configure the priority for the Voice VLAN. To restore to the default priority, please use **no voice vlan priority** command.

Syntax

voice vlan priority *pri*

no voice vlan priority

Parameter

pri — Priority, ranging from 0 to 7, and the default value is 6.

Command Mode

Global Configuration Mode

Example

Configure the priority of the Voice VLAN as 5:

```
TL-SG3424(config)# voice vlan priority 5
```

voice vlan mac-address

Description

The **voice vlan mac-address** command is used to create Voice VLAN OUI. To delete the specified Voice VLAN OUI, please use **no voice vlan mac-address** command.

Syntax

voice vlan mac-address *mac-addr* **mask** *mask* [**description** *descript*]

no voice vlan mac-address *mac-addr*

Parameter

mac-addr — The OUI address of the voice device, in the format of XX:XX:XX:XX:XX:XX.

mask — The OUI address mask of the voice device, in the format of XX:XX:XX:XX:XX:XX.

descript — Give a description to the OUI for identification which contains 16 characters at most.

Command Mode

Global Configuration Mode

Example

Create a Voice VLAN OUI described as TP-Phone with the OUI address 00:11:11:11:11:11 and the mask address FF:FF:FF:00:00:00:

```
TL-SG3424(config)# voice vlan mac-address 00:11:11:11:11:11 mask  
FF:FF:FF:00:00:00 description TP-Phone
```

switchport voice vlan mode

Description

The **switchport voice vlan mode** command is used to configure the Voice VLAN mode for the Ethernet port.

Syntax

switchport voice vlan mode { manual | auto }

Parameter

manual | auto — Port mode.

Command Mode

Interface Configuration Mode (interface gigabitEthernet / interface range gigabitEthernet)

Example

Configure the port 3 to operate in the auto voice VLAN mode:

```
TL-SG3424(config)# interface gigabitEthernet 1/0/3
TL-SG3424(config-if)# switchport voice vlan mode auto
```

switchport voice vlan security

Description

The **switchport voice vlan security** command is used to enable the Voice VLAN security feature. To disable the Voice VLAN security feature, please use **no switchport voice vlan security** command.

Syntax

```
switchport voice vlan security
no switchport voice vlan security
```

Command Mode

Interface Configuration Mode (interface gigabitEthernet / interface range gigabitEthernet)

Example

Enable port 3 for the Voice VLAN security feature:

```
TL-SG3424(config)# interface gigabitEthernet 1/0/3
TL-SG3424(config-if)# switchport voice vlan security
```

show voice vlan

Description

The **show voice vlan** command is used to display the global configuration information of Voice VLAN.

Syntax

```
show voice vlan
```

Command Mode

Privileged EXEC Mode and Any Configuration Mode

Example

Display the configuration information of Voice VLAN globally:

```
TL-SG3424(config)# show voice vlan
```

show voice vlan oui

Description

The **show voice vlan oui** command is used to display the configuration information of Voice VLAN OUI.

Syntax

```
show voice vlan oui
```

Command Mode

Privileged EXEC Mode and Any Configuration Mode

Example

Display the configuration information of Voice VLAN OUI:

```
TL-SG3424(config)# show voice vlan oui
```

show voice vlan switchport

Description

The **show voice vlan switchport** command is used to display the Voice VLAN configuration information of all ports or a specified port.

Syntax

```
show voice vlan switchport [ gigabitEthernet port ]
```

Parameter

port — The Ethernet port number.

Command Mode

Privileged EXEC Mode and Any Configuration Mode

Example

Display the Voice VLAN configuration information of all ports:

```
TL-SG3424(config)# show voice vlan switchport
```

Display the Voice VLAN configuration information of port 2:

```
TL-SG3424(config)# show voice vlan switchport gigabitEthernet 1/0/2
```

Chapter 7 GVRP Commands

GVRP (GARP VLAN registration protocol) is an implementation of GARP (generic attribute registration protocol). GVRP allows the switch to automatically add or remove the VLANs via the dynamic VLAN registration information and propagate the local VLAN registration information to other switches, without having to individually configure each VLAN.

gvrp(global)

Description

The **gvrp** command is used to enable the GVRP function globally. To disable the GVRP function, please use **no gvrp** command.

Syntax

gvrp
no gvrp

Command Mode

Global Configuration Mode

Example

Enable the GVRP function globally:

```
TL-SG3424(config)# gvrp
```

gvrp(interface)

Description

The **gvrp** command is used to enable the GVRP function for the desired port. To disable the GVRP function of this port, please use **no gvrp** command. The GVRP feature can only be enabled for the trunk-type ports.

Syntax

gvrp
no gvrp

Command Mode

Interface Configuration Mode (interface gigabitEthernet / interface range gigabitEthernet)

Example

Enable the GVRP function for ports 2-6:

```
TL-SG3424(config)# interface range gigabitEthernet 1/0/2-6
```

```
TL-SG3424(config-if-range)# gvrp
```

gvrp registration

Description

The **gvrp registration** command is used to configure the GVRP registration type on the desired port. To restore to the default value, please use **no gvrp registration** command.

Syntax

```
gvrp registration { normal | fixed | forbidden }
```

```
no gvrp registration
```

Parameter

normal | fixed | forbidden — Registration mode. By default, the registration mode is “normal”.

Command Mode

Interface Configuration Mode (interface gigabitEthernet / interface range gigabitEthernet)

Example

Configure the GVRP registration mode on ports 2-6 to fixed:

```
TL-SG3424(config)# interface range gigabitEthernet 1/0/2-6
```

```
TL-SG3424(config-if-range)# gvrp registration fixed
```

gvrp timer

Description

The **gvrp timer** command is used to set a GVRP timer for the desired port. To restore to the default setting of a GARP timer, please use **no gvrp timer** command.

Syntax

```
gvrp timer { leaveall | join | leave } value
```

no gvrp timer [leaveall | join | leave]

Parameter

leaveall | join | leave — They are the three timers: leave All、 join and leave. Once the LeaveAll Timer is set, the port with GVRP enabled can send a LeaveAll message after the timer times out, so that other GARP ports can re-register all the attribute information. After that, the LeaveAll timer will start to begin a new cycle. To guarantee the transmission of the Join messages, a GARP port sends each Join message two times. The Join Timer is used to define the interval between the two sending operations of each Join message. Once the Leave Timer is set, the GARP port receiving a Leave message will start its Leave timer, and unregister the attribute information if it does not receive a Join message again before the timer times out.

value —The value of the timer. The LeaveAll Timer ranges from 1000 to 30000 centiseconds and the default value is 1000. The Join Timer ranges from 20 to 1000 centiseconds and the default value is 20. The Leave Timer ranges from 60 to 3000 centiseconds and the default value is 60.

Command Mode

Interface Configuration Mode (interface gigabitEthernet / interface range gigabitEthernet)

Example

Set the GARP leaveall timer of port 6 to 2000 centiseconds and restore to the join timer of it to the default value:

```
TL-SG3424(config)# interface gigabitEthernet 1/0/6
TL-SG3424(config-if)# gvrp timer leaveall 2000
TL-SG3424(config-if)# no gvrp timer join
```

show gvrp global

Description

The **show gvrp global** command is used to display the global GVRP status.

Syntax

```
show gvrp global
```

Command Mode

Privileged EXEC Mode and Any Configuration Mode

Example

Display the global GVRP status:

```
TL-SG3424(config)# show gvrp global
```

show gvrp interface

Description

The **show gvrp interface** command is used to display the GVRP configuration information of all ports or a specified Ethernet port.

Syntax

```
show gvrp interface [ gigabitEthernet port ]
```

Parameter

port —The Ethernet port number.

Command Mode

Privileged EXEC Mode and Any Configuration Mode

Example

Display the GVRP configuration information of all Ethernet ports:

```
TL-SG3424(config)# show gvrp interface
```

Display the GVRP configuration information of port 2:

```
TL-SG3424(config)# show gvrp interface gigabitEthernet 1/0/2
```

Chapter 8 Etherchannel Commands

Etherchannel Commands are used to configure LAG and LACP function.

LAG (Link Aggregation Group) is to combine a number of ports together to make a single high-bandwidth data path, which can highly extend the bandwidth. The bandwidth of the LAG is the sum of bandwidth of its member port.

LACP (Link Aggregation Control Protocol) is defined in IEEE802.3ad and enables the dynamic link aggregation and disaggregation by exchanging LACP packets with its partner. The switch can dynamically group similarly configured ports into a single logical link, which will highly extend the bandwidth and flexibly balance the load.

channel-group

Description

The **channel-group** command is used to add a port to the EtherChannel Group and configure its mode. To delete the port from the EtherChannel Group, please use **no channel-group** command.

Syntax

```
channel-group num mode { on | active | passive }  
no channel-group
```

Parameter

num —— The number of the EtherChannel Group, ranging from 1 to 8.
on —— Enable the static LAG.
active —— Enable the active LACP mode.
passive —— Enable the passive LACP mode.

Command Mode

Interface Configuration Mode (interface gigabitEthernet / interface range gigabitEthernet)

Example

Add ports 2-4 to EtherChannel Group 1 and enable the static LAG:

```
TL-SG3424(config)# interface range gigabitEthernet 1/0/2-4  
TL-SG3424(config-if-range)# channel-group 1 mode on
```

port-channel load-balance

Description

The **port-channel load-balance** command is used to configure the Aggregate Arithmetic for LAG. To return to the default configurations, please use **no port-channel load-balance** command.

Syntax

```
port-channel load-balance { src-dst-mac | src-dst-ip }  
no port-channel load-balance
```

Parameter

src-dst-mac — The source and destination MAC address. When this option is selected, the Aggregate Arithmetic will be based on the source and destination MAC addresses of the packets. The Aggregate Arithmetic for LAG is “src-dst-mac” by default.

src-dst-ip — The source and destination IP address. When this option is selected, the Aggregate Arithmetic will be based on the source and destination IP addresses of the packets.

Command Mode

Global Configuration Mode

Example

Configure the Aggregate Arithmetic for LAG as “src-dst-mac”:

```
TL-SG3424(config)# port-channel load-balance src-dst-mac
```

lACP system-priority

Description

The **lACP system-priority** command is used to configure the LACP system priority globally. To return to the default configurations, please use **no lACP system-priority** command.

Syntax

```
lACP system-priority pri  
no lACP system-priority
```

Parameter

pri — The system priority, ranging from 0 to 65535. It is 32768 by default.

Command Mode

Global Configuration Mode

Example

Configure the LACP system priority as 1024 globally:

```
TL-SG3424(config)# lacp system-priority 1024
```

lacp port-priority

Description

The **lacp port-priority** command is used to configure the LACP port priority for specified ports. To return to the default configurations, please use **no lacp port-priority** command.

Syntax

```
lacp port-priority pri
```

```
no lacp port-priority
```

Parameter

pri — The port priority, ranging from 0 to 65535. It is 32768 by default.

Command Mode

Interface Configuration Mode (interface gigabitEthernet / interface range gigabitEthernet)

Example

Configure the LACP port priority as 1024 for ports 1-3:

```
TL-SG3424(config)# interface range gigabitEthernet 1/0/1-3
```

```
TL-SG3424(config-if-range)# lacp port-priority 1024
```

Configure the LACP port priority as 2048 for port 4:

```
TL-SG3424(config)# interface gigabitEthernet 1/0/4
```

```
TL-SG3424(config-if)# lacp port-priority 2048
```

show etherchannel

Description

The **show etherchannel** command is used to display the EtherChannel information.

Syntax

```
show etherchannel [ channel-group-num ] { detail | summary }
```

Parameter

channel-group-num — The EtherChannel Group number, ranging from 1 to 14. By default, it is empty, and will display the information of all EtherChannel Groups.

detail — The detailed information of EtherChannel.

summary — The EtherChannel information in summary.

Command Mode

Privileged EXEC Mode and Any Configuration Mode

Example

Display the detailed information of EtherChannel Group 1:

```
TL-SG3424(config)# show etherchannel 1 detail
```

show etherchannel load-balance

Description

The **show etherchannel load-balance** command is used to display the Aggregate Arithmetic of LAG.

Syntax

```
show etherchannel load-balance
```

Command Mode

Privileged EXEC Mode and Any Configuration Mode

Example

Display the Aggregate Arithmetic of LAG:

```
TL-SG3424(config)# show etherchannel load-balance
```

show lacp

Description

The **show lacp** command is used to display the LACP information for a specified EtherChannel Group.

Syntax

```
show lacp [ channel-group-num ] { internal | neighbor }
```

Parameter

channel-group-num — The EtherChannel Group number, ranging from 1 to 14. By default, it is empty, and will display the information of all LACP groups.

internal — The internal LACP information.

neighbor — The neighbor LACP information.

Command Mode

Privileged EXEC Mode and Any Configuration Mode

Example

Display the internal LACP information of EtherChannel Group 1:

```
TL-SG3424(config)# show lacp 1 internal
```

show lacp sys-id

Description

The **show lacp sys-id** command is used to display the LACP system priority globally.

Syntax

```
show lacp sys-id
```

Command Mode

Privileged EXEC Mode and Any Configuration Mode

Example

Display the LACP system priority:

```
TL-SG3424(config)# show lacp sys-id
```

Chapter 9 User Manage Commands

User Manage Commands are used to manage the user's logging information by Web, CLI or SSH, so as to protect the settings of the switch from being randomly changed.

user

Description

The **user** command is used to add a new user or modify the existed user's information. To delete the existed users, please use **no user** command.

Syntax

```
user user-name password password [ type { guest | admin } ] [ status { disable | enable } ]
```

```
no user user-name
```

Parameter

user-name ——Type a name for users' login, which contains 16 characters at most, composing digits, English letters and under dashes only.

password ——Type a password for users' login, which contains 16 characters at most, composing digits, English letters and under dashes only.

guest | admin —— Access level. Guest means that you can only view the settings without the right to edit and modify. Admin means that you can edit, modify and view all the settings of different functions. It is "admin" by default.

disable | enable ——Enable/disable the user. The new added user is enabled by default.

Command Mode

Global Configuration Mode

Example

Add and enable a new admin user named tmlink, of which the password is password:

```
TL-SG3424(config)# user tmlink password password type admin status enable
```

user access-control ip-based

Description

The **user access-control ip-based** command is used to limit the IP-range of the users for login. Only the users within the IP-range you set here are allowed to login. To cancel the user access limit, please use **no user access-control** command.

Syntax

```
user access-control ip-based ip-addr ip-mask  
no user access-control
```

Parameter

ip-addr — The source IP address. Only the users within the IP-range you set here are allowed for login.

ip-mask — The subnet mask of the IP address.

Command Mode

Global Configuration Mode

Example

Enable the access-control of the user whose IP address is 192.168.0.148:

```
TL-SG3424(config)# user access-control ip-based 192.168.0.148  
255.255.255.255
```

user access-control mac-based

Description

The **user access-control mac-based** command is used to limit the MAC Address of the users for login. Only the user with this MAC Address you set here is allowed to login. To cancel the user access limit, please use **no user access-control** command.

Syntax

```
user access-control mac-based mac-addr  
no user access-control
```


Parameter

mac-addr — The source MAC address. Only the user with this MAC Address is allowed to login.

Command Mode

Global Configuration Mode

Example

Configure that only the user whose MAC address is 00:00:13:0A:00:01 is allowed to login:

```
TL-SG3424(config)# user access-control mac-based 00:00:13:0A:00:01
```

user access-control port-based

Description

The **user access-control port-based** command is used to limit the ports for login. Only the users connected to these ports you set here are allowed to login. To cancel the user access limit, please use **no user access-control** command.

Syntax

```
user access-control port-based interface { gigabitEthernet port | range gigabitEthernet port-list }
```

```
no user access-control
```

Parameter

port — The Ethernet port number.

port-list — The list group of Ethernet ports, in the format of 1/0/1-4. You can appoint 5 ports at most.

Command Mode

Global Configuration Mode

Example

Configure that only the users connected to ports 2-6 are allowed to login:

```
TL-SG3424(config)# user access-control port-based interface range  
gigabitEthernet 1/0/2-6
```

user max-number

Description

The **user max-number** command is used to configure the maximum login user numbers at the same time. To cancel the limit on login numbers, please use **no user max-number** command.

Syntax

user max-number *admin-num* *guest-num*

no user max-number

Parameter

admin-num —The maximum number of the users allowed to log on as Admin, ranging from 1 to 16. The total number of Admin and Guest should be less than 16.

guest-num —The maximum number of the users allowed to log on as Guest, ranging from 0 to 15. The total number of Admin and Guest should be less than 16.

Command Mode

Global Configuration Mode

Example

Configure the maximum number of users' login as Admin and Guest as 5 and 3:

```
TL-SG3424(config)# user max-num 5 3
```

user idle-timeout

Description

The **user idle-timeout** command is used to configure the timeout time of the switch. To restore to the default timeout time, please use **no user idle-timeout** command.

Syntax

user idle-timeout *minutes*

no user idle-timeout

Parameter

minutes —The timeout time, ranging from 5 to 30 in minutes. The value is 10 by default.

Command Mode

Global Configuration Mode

Example

Configure the timeout time of the switch as 15 minutes:

```
TL-SG3424(config)# user idle-timeout 15
```

line

Description

The **line** command is used to enter the Line Configuration Mode and configure the allowed login user number of the switch.

Syntax

```
line [ console linenum | vty startlinenum endlinenum ]
```

Parameter

linenum — The number of users allowed to login through console port. Its value is 0 in general as there is only one console port on a switch.

startlinenum —The start serial number of the login user selected to configure the login mode and password, ranging from 0 to 15. 0 means the first login user number, 1 means the second, and the rest can be done in the same manner.

endlinenum —The end serial number of the login user selected to configure the login mode and password, ranging from 0 to 15. 0 means the first login user number, 1 means the second, and the rest can be done in the same manner.

Command Mode

Global Configuration Mode

Example

Enter the Console port configuration mode and configure the console port 0:

```
TL-SG3424(config)# line console 0
```

Enter the Virtual Terminal configuration mode so as to prepare further configurations such as password and login mode for virtual terminal 0 to 5:

```
TL-SG3424(config)# line vty 0 5
```

password

Description

The **password** command is used to configure the connection password. To clear the password, please use **no password** command.

Syntax

```
password password
```

```
no password
```

Parameter

password — Configure the connection password, which contains 16 characters at most, composing digits, English letters and under dashes only.

Command Mode

Line Configuration Mode

Example

Configure the connection password of Console port connection 0 as tplink:

```
TL-SG3424(config)# line console 0
```

```
TL-SG3424(config-line)# password tplink
```

Configure the connection password of virtual terminal connection 0-5 as tplink:

```
TL-SG3424(config)# line vty 0 5
```

```
TL-SG3424(config-line)# password tplink
```

login

Description

The **login** command is used to configure the login of a switch not to use the default user name and password. At this situation, a connection password must be set for virtual terminal connection.

Syntax

```
login
```

Command Mode

Line Configuration Mode

Example

Configure the login of Console port connection 0 as login mode:

```
TL-SG3424(config)# line console 0
```

```
TL-SG3424(config-line)# login
```

Configure the login of virtual terminal connection 0-5 as login mode:

```
TL-SG3424(config)# line vty 0 5
```

```
TL-SG3424(config-line)# login
```

login local

Description

The **login local** command is used to configure the login of a switch with the default user name and password admin/admin.

Syntax

```
login local
```

Command Mode

Line Configuration Mode

Example

Configure the login of virtual terminal connection 0-5 as login local mode:

```
TL-SG3424(config)# line vty 0 5
```

```
TL-SG3424(config-line)# login local
```

Configure the login of Console port connection 0 as login local mode:

```
TL-SG3424(config)# line console 0
```

```
TL-SG3424(config-line)# login local
```

show user account-list

Description

The **show user account-list** command is used to display the information of the current users.

Syntax

show user account-list

Command Mode

Privileged EXEC Mode and Any Configuration Mode

Example

Display the information of the current users:

```
TL-SG3424(config)# show user account-list
```

show user configuration

Description

The **user configuration** command is used to display the security configuration information of the users, including access-control, max-number and the idle-timeout, etc.

Syntax

show user configuration

Command Mode

Privileged EXEC Mode and Any Configuration Mode

Example

Display the security configuration information of the users:

```
TL-SG3424(config)# show user configuration
```

Chapter 10 Binding Table Commands

You can bind the IP address, MAC address, VLAN and the connected Port number of the Host together, which can be the condition for the ARP Inspection and IP Source Guard to filter the packets.

ip source binding

Description

The **ip source binding** command is used to bind the IP address, MAC address, VLAN ID and the Port number together manually. You can manually bind the IP address, MAC address, VLAN ID and the Port number together in the condition that you have got the related information of the Hosts in the LAN. To delete the IP-MAC –VID-PORT entry from the binding table, please use **no ip source binding index** command.

Syntax

```
ip source binding hostname ip-addr mac-addr vlan vid interface  
gigabitEthernet port { none | arp-detection } [ forced-source { arp-scanning |  
dhcp-snooping } ]
```

```
no ip source binding index idx
```

Parameter

hostname ——The Host Name, which contains 20 characters at most.

ip-addr —— The IP Address of the Host.

mac-addr —— The MAC Address of the Host.

vid ——The VLAN ID needed to be bound, ranging from 1 to 4094.

port ——The number of Ethernet port connected to the Host.

none | arp-detection——The protect type for the entry. arp-detection indicates ARP detection; none indicates applying none.

forced-source —— The source of the binding entry can be specified as arp-scanning or dhcp-snooping. It is multi-optional.

idx —— The entry number needed to be deleted, ranging from 1 to 200. You can use the [show ip source binding](#) command to get the idx. Pay attention to that, the entry number is the actual number in the binding table not arranged in an order.

Command Mode

Global Configuration Mode

Example

Bind an entry with the IP 192.168.0.1, MAC 00:00:00:00:00:01, VLAN ID 2 and Port number 5 manually. And then enable the entry for the ARP detection:

```
TL-SG3424(config)# ip source binding host1 192.168.0.1 00:00:00:00:00:01  
vlan 2 interface gigabitEthernet 1/0/5 arp-detection
```

Delete the IP-MAC –VID-PORT entry with the index 5:

```
TL-SG3424(config)# no ip source binding index 5
```

ip dhcp snooping

Description

The **ip dhcp snooping** command is used to enable DHCP-Snooping function globally. To disable DHCP-Snooping function globally, please use **no ip dhcp snooping** command. DHCP Snooping functions to monitor the process of the Host obtaining the IP address from DHCP server, and record the IP address, MAC address, VLAN and the connected Port number of the Host for automatic binding. The switch can also propagate the control information and the network parameters via the Option 82 field to provide more information for the Host.

Syntax

ip dhcp snooping

no ip dhcp snooping

Command Mode

Global Configuration Mode

Example

Enable the DHCP-Snooping function globally:

```
TL-SG3424(config)# ip dhcp snooping
```


ip dhcp snooping global

Description

The **ip dhcp snooping global** command is configure DHCP-Snooping globally. To restore to the default value, please use **no dhcp-snooping global** command.

Syntax

ip dhcp snooping global [**global-rate** *global-rate*] [**dec-threshold** *dec-threshold*] [**dec-rate** *dec-rate*]

no ip dhcp snooping global

Parameter

global-rate — The value to specify the maximum amount of DHCP messages that can be forwarded by the switch per second. The excessive messages will be discarded. The options are 0/10/20/30/40/50 (packet/second).By default, it is 0 standing for disable.

dec-threshold —The value to specify the minimum transmission rate of the Decline packets to trigger the Decline protection for the specific port. The options are 0/5/10/15/20/25/30 (packet/second).By default, it is 0 standing for disable.

dec-rate —The value to specify the Decline Flow Control. The traffic flow of the corresponding port will be limited to be this value if the transmission rate of the Decline packets exceeds the Decline Threshold. The options are 5/10/15/20/25/30 (packet/second). By default, it is 5.

Command Mode

Global Configuration Mode

Example

Configure the Global Flow Control as 30pps, the Decline Threshold as 20 pps, and decline Flow Control as 20 pps for DHCP Snooping:

```
TL-SG3424(config)# ip dhcp snooping global global-rate 30 dec-threshold 20  
dec-rate 20
```

ip dhcp snooping information option

Description

The **ip dhcp snooping information option** command is used to enable the Option 82 function of DHCP Snooping. To disable the Option 82 function, please use **no ip dhcp snooping information option** command.

Syntax

ip dhcp snooping information option
no ip dhcp snooping information option

Command Mode

Global Configuration Mode

Example

Enable the Option 82 function of DHCP Snooping:

```
TL-SG3424(config)# ip dhcp snooping information option
```

ip dhcp snooping information strategy

Description

The **ip dhcp snooping information strategy** command is used to select the operation for the Option 82 field of the DHCP request packets from the Host. To restore to the default option, please use **no ip dhcp snooping information strategy** command.

Syntax

ip dhcp snooping information strategy *strategy*
no ip dhcp snooping information strategy

Parameter

strategy — The operations for Option 82 field of the DHCP request packets from the Host, including three types:

keep: Indicates to keep the Option 82 field of the packets. It is the default option;

replace: Indicates to replace the Option 82 field of the packets with the switch defined one;

drop: Indicates to discard the packets including the Option 82 field

Command Mode

Global Configuration Mode

Example

Replace the Option 82 field of the packets with the switch defined one and then send out:

```
TL-SG3424(config)# ip dhcp snooping information strategy replace
```

ip dhcp snooping information remote-id

Description

The **ip dhcp snooping information remote-id** command is used to enable and configure the customized sub-option Remote ID for the Option 82. To return to default Remote ID for the Option 82, please use **no ip dhcp snooping information remote-id** command.

Syntax

```
ip dhcp snooping information remote-id string
```

```
no ip dhcp snooping information remote-id
```

Parameter

string ——Enter the sub-option Remote ID, which contains 32 characters at most.

Command Mode

Global Configuration Mode

Example

Enable and configure the customized sub-option Remote ID for the Option 82 as tplink:

```
TL-SG3424(config)# ip dhcp snooping information remote-id tplink
```

ip dhcp snooping information circuit-id

Description

The **ip dhcp snooping information circuit-id** command is used to enable and configure the customized sub-option Circuit ID for the Option 82. To return to the

default Circuit ID for the Option 82, please use **no ip dhcp snooping information circuit-id** command.

Syntax

ip dhcp snooping information circuit-id *string*

ip dhcp snooping information circuit-id

Parameter

string —Enter the sub-option Circuit ID, which contains 32 characters at most.

Command Mode

Global Configuration Mode

Example

Enable and configure the customized sub-option Circuit ID for the Option 82 as tplink:

```
TL-SG3424(config)# ip dhcp snooping information circuit-id tplink
```

ip dhcp snooping trust

Description

The **ip dhcp snooping trust** command is used to configure a port to be a Trusted Port. Only the Trusted Port can receive the DHCP packets from DHCP servers. To turn the port back to a distrusted port, please use **no ip dhcp snooping trust** command.

Syntax

ip dhcp snooping trust

no ip dhcp snooping trust

Command Mode

Interface Configuration Mode (interface gigabitEthernet / interface range gigabitEthernet)

Example

Configure port 2 to be a Trusted Port:

```
TL-SG3424(config)# interface gigabitEthernet 1/0/2
```

```
TL-SG3424(config-if)# ip dhcp snooping trust
```

ip dhcp snooping mac-verify

Description

The **ip dhcp snooping mac-verify** command is used to enable the MAC Verify feature. To disable the MAC Verify feature, please use **no ip dhcp snooping mac-verify** command. There are two fields of the DHCP packet containing the MAC address of the Host. The MAC Verify feature is to compare the two fields and discard the packet if the two fields are different.

Syntax

ip dhcp snooping mac-verify

no ip dhcp snooping mac-verify

Command Mode

Interface Configuration Mode (interface gigabitEthernet / interface range gigabitEthernet)

Example

Enable the MAC Verify feature for port 2:

```
TL-SG3424(config)# interface gigabitEthernet 1/0/2
```

```
TL-SG3424(config-if)# ip dhcp snooping mac-verify
```

ip dhcp snooping limit rate

Description

The **ip dhcp snooping limit rate** command is used to enable the Flow Control feature for the DHCP packets. The excessive DHCP packets will be discarded. To restore to the default configuration, please use **no ip dhcp snooping limit rate** command.

Syntax

ip dhcp snooping limit rate *value*

no ip dhcp snooping limit rate

Parameter

value — The value of Flow Control. The options are 0/5/10/15/20/25/30(packet/second). The default value is 0, which stands for disable.

Command Mode

Interface Configuration Mode (interface gigabitEthernet / interface range gigabitEthernet)

Example

Set the Flow Control of port 2 as 20 pps:

```
TL-SG3424(config)# interface gigabitEthernet 1/0/2
TL-SG3424(config-if)# ip dhcp snooping limit rate 20
```

ip dhcp snooping decline

Description

The **ip dhcp snooping decline** command is used to enable the Decline Protect feature. To disable the Decline Protect feature, please use **no ip dhcp snooping decline** command.

Syntax

```
ip dhcp snooping decline
no ip dhcp snooping decline
```

Command Mode

Interface Configuration Mode (interface gigabitEthernet / interface range gigabitEthernet)

Example

Enable the Decline Protect feature of port 2:

```
TL-SG3424(config)# interface gigabitEthernet 1/0/2
TL-SG3424(config-if)# ip dhcp snooping decline
```

show ip source binding

Description

The **show ip source binding** command is used to display the IP-MAC-VID-PORT binding table.

Syntax

```
show ip source binding
```

Command Mode

Privileged EXEC Mode and Any Configuration Mode

Example

Display the IP-MAC-VID-PORT binding table:

```
TL-SG3424(config)# show ip source binding
```

show ip dhcp snooping

Description

The **show ip dhcp snooping** command is used to display the running status of DHCP-Snooping.

Syntax

```
show ip dhcp snooping
```

Command Mode

Privileged EXEC Mode and Any Configuration Mode

Example

Display the running status of DHCP-Snooping:

```
TL-SG3424# show ip dhcp snooping
```

show ip dhcp snooping information

Description

The **show ip dhcp snooping information** command is used to display the Option 82 configuration status of DHCP-Snooping.

Syntax

```
show ip dhcp snooping information
```

Command Mode

Privileged EXEC Mode and Any Configuration Mode

Example

Display the Option 82 configuration status of DHCP-Snooping:

```
TL-SG3424# show ip dhcp snooping information
```

show ip dhcp snooping interface gigabitEthernet

Description

The **show ip dhcp snooping interface gigabitEthernet** command is used to display the DHCP-Snooping configuration of desired Gigabit Ethernet ports.

Syntax

```
show ip dhcp snooping interface gigabitEthernet [ port ]
```

Parameters

port —The Ethernet port number.

Command Mode

Privileged EXEC Mode and Any Configuration Mode

Example

Display the DHCP-Snooping configuration of port 2:

```
TL-SG3424# show ip dhcp snooping interface gigabitEthernet 1/0/2
```


Chapter 11 ARP Inspection Commands

ARP (Address Resolution Protocol) Detect function is to protect the switch from the ARP cheating, such as the Network Gateway Spoofing and Man-In-The-Middle Attack, etc.

ip arp inspection(global)

Description

The **ip arp inspection** command is used to enable the ARP Detection function globally. To disable the ARP Detection function, please use **no ip arp detection** command.

Syntax

ip arp inspection
no ip arp inspection

Command Mode

Global Configuration Mode

Example

Enable the ARP Detection function globally:

```
TL-SG3424(config)# ip arp inspection
```

ip arp inspection trust

Description

The **ip arp inspection trust** command is used to configure the port for which the ARP Detect function is unnecessary as the Trusted Port. To clear the Trusted Port list, please use **no ip arp detection trust** command. The specific ports, such as up-linked port, routing port and LAG port, should be set as Trusted Port. To ensure the normal communication of the switch, please configure the ARP Trusted Port before enabling the ARP Detect function.

Syntax

ip arp inspection trust
no ip arp inspection trust

Command Mode

Interface Configuration Mode (interface gigabitEthernet / interface range gigabitEthernet)

Example

Configure the ports 2-5 as the Trusted Port:

```
TL-SG3424(config)# interface range gigabitEthernet 1/0/2-5
TL-SG3424(config-if-range)# ip arp inspection trust
```

ip arp inspection(interface)

Description

The **ip arp inspection** command is used to enable the ARP Defend function. To disable the ARP detection function, please use **no ip arp inspection** command. ARP Attack flood produces lots of ARP Packets, which will occupy the bandwidth and slow the network speed extremely. With the ARP Defend enabled, the switch can terminate receiving the ARP packets for 300 seconds when the transmission speed of the legal ARP packet on the port exceeds the defined value so as to avoid ARP Attack flood.

Syntax

ip arp inspection

no ip arp inspection

Command Mode

Interface Configuration Mode (interface gigabitEthernet / interface range gigabitEthernet)

Example

Enable the arp defend function for ports 2-6:

```
TL-SG3424(config)# interface range gigabitEthernet 1/0/2-6
TL-SG3424(config-if-range)# ip arp inspection
```

ip arp inspection limit-rate

Description

The **ip arp inspection limit-rate** command is used to configure the ARP speed of a specified port. To restore to the default speed, please use **no ip arp inspection limit-rate** command.

Syntax

```
ip arp inspection limit-rate value  
no ip arp inspection limit-rate
```

Parameter

value —The value to specify the maximum amount of the received ARP packets per second, ranging from 10 to 100 in pps(packet/second). By default, the value is 15.

Command Mode

Interface Configuration Mode (interface gigabitEthernet / interface range gigabitEthernet)

Example

Configure the maximum amount of the received ARP packets per second as 50 pps for port 5:

```
TL-SG3424(config)# interface gigabitEthernet 1/0/5  
TL-SG3424(config-if)# ip arp inspection limit-rate 50
```

ip arp inspection recover

Description

The **ip arp inspection recover** command is used to restore to the port to the ARP transmit status from the ARP filter status.

Syntax

```
ip arp inspection recover
```

Command Mode

Interface Configuration Mode (interface gigabitEthernet / interface range gigabitEthernet)

Example

Restore port 5 to the ARP transmit status:

```
TL-SG3424(config)# interface gigabitEthernet 1/0/5
```

```
TL-SG3424(config-if)# ip arp inspection recover
```

show ip arp inspection

Description

The **show ip arp inspection** command is used to display the ARP detection global configuration including the enable/disable status and the Trusted Port list.

Syntax

```
show ip arp inspection
```

Command Mode

Privileged EXEC Mode and Any Configuration Mode

Example

Display the ARP detection configuration globally:

```
TL-SG3424(config)# show ip arp inspection
```

show ip arp inspection interface

Description

The **show ip arp inspection interface** command is used to display the interface configuration of ARP detection.

Syntax

```
show ip arp inspection interface [ gigabitEthernet port ]
```

Parameter

port —The Ethernet port number.

Command Mode

Privileged EXEC Mode and Any Configuration Mode

Example

Display the configuration of all the ports:

```
TL-SG3424(config)# show ip arp inspection interface
```

Display the configuration of port 2:

```
TL-SG3424(config)# show ip arp inspection interface gigabitEthernet 1/0/2
```

show ip arp inspection statistics

Description

The **show ip arp inspection statistics** command is used to display the number of the illegal ARP packets received.

Syntax

```
show ip arp inspection statistics
```

Command Mode

Privileged EXEC Mode and Any Configuration Mode

Example

Display the number of the illegal ARP packets received:

```
TL-SG3424(config)# show ip arp inspection statistics
```

clear ip arp inspection statistics

Description

The **clear ip arp inspection statistics** command is used to clear the statistic of the illegal ARP packets received.

Syntax

```
clear ip arp inspection statistics
```

Command Mode

Privileged EXEC Mode and Any Configuration Mode

Example

Clear the statistic of the illegal ARP packets received:

```
TL-SG3424(config)# clear ip arp inspection statistics
```

Chapter 12 DoS Defend Command

DoS (Denial of Service) Attack is to occupy the network bandwidth maliciously by the network attackers or the evil programs sending a lot of service requests to the Host. With the DoS Defend enabled, the switch can analyze the specific field of the received packets and provide the defend measures to ensure the normal working of the local network.

ip dos-prevent

Description

The **ip dos-prevent** command is used to enable the DoS defend function globally. To disable the DoS defend function, please use **no ip dos-prevent** command.

Syntax

```
ip dos-prevent  
no ip dos-prevent
```

Command Mode

Global Configuration Mode

Example

Enable the DoS defend function globally:

```
TL-SG3424(config)# ip dos-prevent
```

ip dos-prevent type

Description

The **ip dos-prevent type** command is used to select the DoS Defend Type. To disable the corresponding Defend Type, please use **no ip dos-prevent type** command.

Syntax

```
ip dos-prevent type [ land ] [ scan-synfin ] [ xma-scan ] [ null-scan ]  
[ port-less-than-1024 ] [ blat ] [ ping-flood ] [ syn-flood ]  
no ip dos-prevent type [ land ] [ scan-synfin ] [ xma-scan ] [ null-scan ]  
[ port-less-tan-1024 ] [ blat ] [ ping-flood ] [ syn-flood ]
```

Parameter

land — Land attack.

scan-synfin — Scan SYNFIN attack.

xma-scan — Xma Scan attack.

null-scan — NULL Scan attack.

port-less-than-1024 — The SYN packets whose Source Port less than 1024.

blat — Blat attack.

ping-flood — Ping flooding attack. With the ping flood attack enabled, the switch will limit automatically the forwarding speed of ping packets to 512K when attacked by ping flood.

syn-flood — SYN/SYN-ACK flooding attack. With the syn-flood attack enabled, the switch will limit automatically the forwarding speed of ping packets to 512K when attacked by syn-flood.

Command Mode

Global Configuration Mode

Example

Enable four DoS Defend Types named Land attack:

```
TL-SG3424(config)# ip dos-prevent type land
```

show ip dos-prevent

Description

The **show ip dos-prevent** command is used to display the DoS information of the detected DoS attack, including enable/disable status, the DoS Defend Type.

Syntax

```
show ip dos-prevent
```

Command Mode

Privileged EXEC Mode and Any Configuration Mode

Example

Display the DoS information of the detected DoS attack globally:

```
TL-SG3424(config)# show ip dos-prevent
```

Chapter 13 IEEE 802.1X Commands

IEEE 802.1X function is to provide an access control for LAN ports via the authentication. Only the supplicant passing the authentication can access the LAN.

dot1x system-auth-control

Description

The **dot1x system-auth-control** command is used to enable the IEEE 802.1X function globally. To disable the IEEE 802.1X function, please use **no dot1x system-auth-control** command.

Syntax

```
dot1x system-auth-control
no dot1x system-auth-control
```

Command Mode

Global Configuration Mode

Example

Enable the IEEE 802.1X function:

```
TL-SG3424(config)# dot1x system-auth-control
```

dot1x auth-method

Description

The **dot1x auth-method** command is used to configure the Authentication Method of IEEE 802.1X and the default 802.1x authentication method is “eap-md5”. To restore to the default 802.1x authentication method, please use **no dot1x auth-method** command.

Syntax

```
dot1x auth-method { pap | eap-md5 }
no dot1x auth-method
```

Parameter

pap | eap-md5 —Authentication Methods.

pap: IEEE 802.1X authentication system uses extensible authentication protocol (EAP) to exchange information between the switch and the client. The transmission of EAP packets is terminated at the switch and the EAP packets are converted to the other protocol (such as RADIUS) packets for transmission

eap-md5: IEEE 802.1X authentication system uses extensible authentication protocol (EAP) to exchange information between the switch and the client. The EAP protocol packets with authentication data can be encapsulated in the advanced protocol (such as RADIUS) packets to be transmitted to the authentication server.

Command Mode

Global Configuration Mode

Example

Configure the Authentication Method of IEEE 802.1X as pap:

```
TL-SG3424(config)# dot1x auth-method pap
```

dot1x guest-vlan(global)

Description

The **dot1x guest-vlan** command is used to enable the Guest VLAN function globally. To disable the Guest VLAN function, please use **no dot1x guest-vlan** command.

Syntax

```
dot1x guest-vlan vid
```

```
no dot1x guest-vlan
```

Parameter

vid —The VLAN ID needed to enable the Guest VLAN function, ranging from 2 to 4094. The supplicants in the Guest VLAN can access the specified network source.

Command Mode

Global Configuration Mode

Example

Enable the Guest VLAN function for VLAN 5:

```
TL-SG3424(config)# dot1x guest-vlan 5
```

dot1x quiet-period

Description

The **dot1x quiet-period** command is used to enable the quiet-period function. To disable the function, please use **no dot1x quiet-period** command.

Syntax

```
dot1x quiet-period  
no dot1x quiet-period
```

Command Mode

Global Configuration Mode

Example

Enable the quiet-period function:

```
TL-SG3424(config)# dot1x quiet-period
```

dot1x timeout

Description

The **dot1x timeout** command is used to configure the quiet period and the supplicant timeout. To restore to the default, please use **no dot1x timeout** command.

Syntax

```
dot1x timeout { quiet-period time | reauth-period time }  
no dot1x timeout { quiet-period | reauth-period }
```

Parameter

quiet-period *time* —The value for Quiet Period, ranging from 1 to 999 in seconds. By default, it is 10. Once the supplicant failed to the 802.1X Authentication, then the switch will not respond to the authentication request from the same supplicant during the Quiet Period.

reauth-period *time* —The maximum time for the switch to wait for the response from supplicant before resending a request to the supplicant., ranging from 1 to 9 in second. By default, it is 3.

Command Mode

Global Configuration Mode

Example

Configure the quiet period as 100 seconds:

```
TL-SG3424(config)# dot1x timeout quiet-period 100
```

dot1x max-reauth-req

Description

The **dot1x max-reauth-req** command is used to configure the maximum transfer times of the repeated authentication request when the server cannot be connected. To restore to the default value, please use **no dot1x max-reauth-req** command.

Syntax

```
dot1x max-reauth-req times
```

```
no dot1x max-reauth-req
```

Parameter

times —The maximum transfer times of the repeated authentication request, ranging from 1 to 9 in times. By default, the value is 3.

Command Mode

Global Configuration Mode

Example

Configure the maximum transfer times of the repeated authentication request as 5:

```
TL-SG3424(config)# dot1x max-reauth-req 5
```

dot1x

Description

The **dot1x** command is used to enable the IEEE 802.1X function for a specified port. To disable the IEEE 802.1X function for a specified port, please use **no dot1x** command.

Syntax

```
dot1x
```

```
no dot1x
```

Command Mode

Interface Configuration Mode (interface gigabitEthernet / interface range gigabitEthernet)

Example

Enable the IEEE 802.1X function for port 1:

```
TL-SG3424(config)# interface gigabitEthernet 1/0/1
TL-SG3424(config-if)# dot1x
```

dot1x guest-vlan(interface)

Description

The **dot1x guest-vlan** command is used to enable the guest VLAN function for a specified port. To disable the Guest VLAN function for a specified port, please use **no dot1x guest-vlan** command. Please ensure that the Control Type of the corresponding port is port-based before enabling the guest VLAN function for it.

Syntax

```
dot1x guest-vlan
no dot1x guest-vlan
```

Command Mode

Interface Configuration Mode (interface gigabitEthernet / interface range gigabitEthernet)

Example

Enable the Guest VLAN function for port 2:

```
TL-SG3424(config)# interface gigabitEthernet 1/0/2
TL-SG3424(config-if)# dot1x guest-vlan
```

dot1x port-control

Description

The **dot1x port-control** command is used to configure the control mode of IEEE 802.1X for the specified port. By default, the control mode is "auto". To restore to the default configuration, please use **no dot1x port-control** command.

Syntax

```
dot1x port-control { auto | authorized-force | unauthorized-force }  
no dot1x port-control
```

Parameter

auto | authorized-force | unauthorized-force — The Control Mode for the port.

auto: In this mode, the port will normally work only after passing the 802.1X Authentication.

authorized-force: In this mode, the port can work normally without passing the 802.1X Authentication.

unauthorized-force: In this mode, the port is forbidden working for its fixed unauthorized status.

Command Mode

Interface Configuration Mode (interface gigabitEthernet / interface range gigabitEthernet)

Example

Configure the Control Mode for port 1 as authorized-force:

```
TL-SG3424(config)# interface gigabitEthernet 1/0/1  
TL-SG3424(config-if)# dot1x port-control authorized-force
```

dot1x port-method

Description

The **dot1x port-method** command is used to configure the control type of IEEE 802.1X for the specified port. By default, the control type is “mac-based”. To restore to the default configuration, please use **no dot1x port-method** command.

Syntax

```
dot1x port-method { mac-based | port-based }  
no dot1x port-method
```

Parameter

mac-based | port-based — The control type for the port.

Mac-based: Any client connected to the port should pass the 802.1X authentication for access.

port-based: All the clients connected to the port can access the network on the condition that any one of the clients has passed the 802.1X Authentication.

Command Mode

Interface Configuration Mode (interface gigabitEthernet / interface range gigabitEthernet)

Example

Configure the Control Type for port 1 as port-based:

```
TL-SG3424(config)# interface gigabitEthernet 1/0/1
TL-SG3424(config-if)# dot1x port-method port-based
```

radius

Description

The **radius** command is used to configure the parameters of radius.

Syntax

```
radius {[ auth-pri ip ] [ auth-sec ip ] [ auth-port port ] [ auth-key keyvalue ]
[ acct-pri ip ] [ acct-sec ip ] [ acct-port port ] [ acct-key keyvalue ] [ timeout
value ]}
```

```
no radius { auth-port | auth-key | acct-port | acct-key | timeout }
```

Parameter

auth-pri *ip* — The IP address of the authentication server.

auth-sec *ip* — The IP address of the alternative authentication server.

auth-port *port* — The UDP port of authentication server(s) ranging from 1 to 65535. The default port is 1812.

auth-key *keyvalue* — The shared password for the switch and the authentication servers to exchange messages which contains 15 characters at most.

acct-pri *ip* — The IP address of the accounting server.

acct-sec *ip* — The IP address of the alternative accounting server.

acct-port *port* — The UDP port of accounting server(s) ranging from 1 to 65535. The default port is 1813.

acct-key *keyvalue* — The shared password for the switch and the accounting servers to exchange messages which contains 15 characters at most.

value —The maximum time for the switch to wait for the response before resending a request to the supplicant., ranging from 1 to 9 in second. By default, it is 3.

Command Mode

Global Configuration Mode

Example

Configure the IP address of the accounting server as 10.20.1.100 and password as tplink:

```
TL-SG3424(config)# radius auth-pri 10.20.1.100 auth-key tplink
```

radius server-account

Description

The **radius server-account** command is used to enable the accounting feature. To disable the accounting feature, please use **no radius server-account** command.

Syntax

```
radius server-account  
no radius server-account
```

Command Mode

Global Configuration Mode

Example

Enable the accounting feature:

```
TL-SG3424(config)# radius server-account
```

show dot1x global

Description

The **show dot1x global** command is used to display the global configuration of 801.X.

Syntax

```
show dot1x global
```

Command Mode

Privileged EXEC Mode and Any Configuration Mode

Example

Display the configuration of 801.X globally:

```
TL-SG3424(config)# show dot1x global
```

show dot1x interface

Description

The **show dot1x interface** command is used to display all ports' or the specified port's configuration information of 801.X.

Syntax

```
show dot1x interface [ gigabitEthernet port ]
```

Parameter

port —The number of the Ethernet port. Display the configuration of all the ports by default.

Command Mode

Privileged EXEC Mode and Any Configuration Mode

Example

Display the configuration information of 801.X for all ports:

```
TL-SG3424(config)# show dot1x interface
```

Display the configuration information of 801.X for port 1:

```
TL-SG3424(config)# show dot1x interface gigabitEthernet 1/0/1
```

show radius accounting

Description

The **show radius accounting** command is used to display the configuration of the accounting server.

Syntax

```
show radius accounting
```


Command Mode

Privileged EXEC Mode and Any Configuration Modes

Example

Display the configuration of the accounting server:

```
TL-SG3424(config)# show radius accounting
```

show radius authentication

Description

The **show radius authentication** command is used to display the configuration of the RADIUS authentication server.

Syntax

```
show radius authentication
```

Command Mode

Privileged EXEC Mode and Any Configuration Mode

Example

Display the configuration of the RADIUS authentication server:

```
TL-SG3424(config)# show radius authentication
```

Chapter 14 System Log Commands

The log information will record the settings and operation of the switch respectively for you to monitor operation status and diagnose malfunction.

logging buffer

Description

The **logging buffer** command is used to configure the severity level and the status of the configuration input to the log buffer. To return to the default configuration, please use **no logging buffer** command. Local Log is the log information saved in the switch. It has two output channels, that is, it can be saved to two different positions, log buffer and log file. The log buffer indicates the RAM for saving system log and the information in the log buffer can be got by [show logging buffer](#) command. It will be lost when the switch is restarted.

Syntax

logging buffer *level*

no logging buffer

Parameter

level — Severity level of the log information output to each channel. There are 8 severity levels marked with values 0-7. The smaller value has the higher priority. Only the log with the same or smaller severity level value will be output. By default, it is 7 indicating that all the log information will be saved in the log buffer.

Command Mode

Global Configuration Mode

Example

Set the severity level as 6:

```
TL-SG3424(config)# logging buffer 6
```

logging file flash

Description

The **logging file flash** command is used to configure the level and the status of the log file input. To restore to the default configuration, please use **no logging file flash** command. The log file indicates the flash sector for saving system log. The information in the log file will not be lost after the switch is restarted and can be got by the [show logging flash](#) command.

Syntax

logging file flash *level*

no logging file flash

Parameter

level — Severity level of the log information output to each channel. There are 8 severity levels marked with values 0-7. The smaller value has the higher priority. Only the log with the same or smaller severity level value will be output. By default, it is 4 indicating that the log information marked with 0~4 will be saved in the log buffer.

Command Mode

Global Configuration Mode

Example

Enable the log file function and set the severity as 7:

```
TL-SG3424(config)# logging file flash 7
```

clear logging

Description

The **clear logging** command is used to clear the information in the log buffer and log file.

Syntax

clear logging [*buffer* | *flash*]

Parameter

buffer | *flash* —The output channels: *buffer* and *flash*. Clear the information of the two channels, by default.

Command Mode

Global Configuration Mode

Example

Clear the information in the log file:

```
TL-SG3424(config)# clear logging buffer
```

logging host index

Description

The **logging host index** command is used to configure the Log Host. To clear the configuration of the specified Log Host, please use **no logging host index** command. Log Host is to receive the system log from other devices. You can remotely monitor the settings and operation status of other devices through the log host.

Syntax

logging host index *idx host-ip level*

no logging host index *idx*

Parameter

idx — The index of the log host. The switch supports 4 log hosts at most.

host-ip — The IP for the log host.

level — The severity level of the log information sent to each log host. There are 8 severity levels marked with values 0-7. The smaller value has the higher priority. Only the log with the same or smaller severity level value will be sent to the corresponding log host. By default, it is 6 indicating that the log information marked with 0~6 will be sent to the log host.

Command Mode

Global Configuration Mode

Example

Set the IP address as 192.168.0.148, the level 5:

```
TL-SG3424(config)# logging host index 2 192.168.0.148 5
```

show logging local-config

Description

The **show logging local-config** command is used to display the configuration of the Local Log including the log buffer and the log file.

Syntax

```
show logging local-config
```

Command Mode

Privileged EXEC Mode and Any Configuration Mode

Example

Display the configuration of the Local Log:

```
TL-SG3424(config)# show logging local-config
```

show logging loghost

Description

The **show logging loghost** command is used to display the configuration of the log host.

Syntax

```
show logging loghost [ index ]
```

Parameter

index —The index of the log host whose configuration will be displayed, ranging from 1 to 4. Display the configuration of all the log hosts by default.

Command Mode

Privileged EXEC Mode and Any Configuration Mode

Example

Display the configuration of the log host 2:

```
TL-SG3424(config)# show logging loghost 2
```

show logging buffer

Description

The **show logging buffer** command is used to display the log information in the log buffer according to the severity level.

Syntax

```
show logging buffer [ level level ]
```

Parameter

level — Severity level. There are 8 severity levels marked with values 0-7. The information of levels with priority not lower than the select level will display. Display all the log information in the log buffer by default.

Command Mode

Privileged EXEC Mode and Any Configuration Mode

Example

Display the log information from level 0 to level 5 in the log buffer:

```
TL-SG3424(config)# show logging buffer level 5
```

show logging flash

Description

The **show logging flash** command is used to display the log information in the log file according to the severity level.

Syntax

```
show logging flash [ level level ]
```

Parameter

level — Severity level. There are 8 severity levels marked with values 0-7. The information of levels with priority not lower than the select level will display. Display all the log information in the log file by default.

Command Mode

Privileged EXEC Mode and Any Configuration Mode

Example

Display the log information with the level marked 0~3 in the log file:

```
TL-SG3424(config)# show logging flash level 3
```

Chapter 15 SSH Commands

SSH (Security Shell) can provide the unsecured remote management with security and powerful authentication to ensure the security of the management information.

ip ssh server

Description

The **ip ssh server** command is used to enable SSH function. To disable the SSH function, please use **no ip ssh server** command.

Syntax

ip ssh server
no ip ssh server

Command Mode

Global Configuration Mode

Example

Enable the SSH function:

```
TL-SG3424(config)# ip ssh server
```

ip ssh version

Description

The **ip ssh version** command is used to enable the SSH protocol version. To disable the protocol version, please use **no ip ssh version** command.

Syntax

ip ssh version { v1 | v2 }
no ip ssh version { v1 | v2 }

Parameter

v1 | v2 — The SSH protocol version to be enabled. They represent SSH v1 and SSH v2 respectively.

Command Mode

Global Configuration Mode

Example

Enable SSH v2:

```
TL-SG3424(config)# ip ssh version v2
```

ip ssh timeout

Description

The **ip ssh timeout** command is used to specify the idle-timeout time of SSH. To restore to the factory defaults, please use **ip ssh timeout** command.

Syntax

```
ip ssh timeout value
```

```
no ip ssh timeout
```

Parameter

value — The Idle-timeout time. During this period, the system will automatically release the connection if there is no operation from the client. It ranges from 1 to 999 in seconds. By default, this value is 500.

Command Mode

Global Configuration Mode

Example

Specify the idle-timeout time of SSH as 300 seconds:

```
TL-SG3424(config)# ip ssh timeout 300
```

ip ssh max-client

Description

The **ip ssh max-client** command is used to specify the maximum number of the connections to the SSH server. To return to the default configuration, please use **no ip ssh max-client** command.

Syntax

```
ip ssh max-client num
```

```
no ip ssh max-client
```

Parameter

num — The maximum number of the connections to the SSH server. It ranges from 1 to 5. By default, this value is 5.

Command Mode

Global Configuration Mode

Example

Specify the maximum number of the connections to the SSH server as 3:

```
TL-SG3424(config)# ip ssh max-client 3
```

ip ssh download

Description

The **ip ssh download** command is used to download the SSH key file from TFTP server.

Syntax

```
ip ssh download { v1 | v2 } key-file ip-address ip-addr
```

Parameter

v1 | v2 — Select the type of SSH key to download, v1 represents SSH-1, v2 represents SSH-2.

key-file — The name of the key-file which is selected to download. The length of the name ranges from 1 to 25 characters. The key length of the downloaded file must be in the range of 256 to 3072 bits.

ip-addr — The IP address of the TFTP server.

Command Mode

Global Configuration Mode

Example

Download a SSH-1 type key file named ssh-key from TFTP server with the IP Address 192.168.0.148:

```
TL-SG3424(config)# ip ssh download v1 ssh-key ip-address 192.168.0.148
```

show ip ssh

Description

The **show ip ssh** command is used to display the global configuration of SSH.

Syntax

```
show ip ssh
```

Command Mode

Privileged EXEC Mode and Any Configuration Mode

Example

Display the global configuration of SSH:

```
TL-SG3424(config)# show ip ssh
```

Chapter 16 SSL Commands

SSL (Secure Sockets Layer) , a security protocol, is to provide a secure connection for the application layer protocol(e.g. HTTP) based on TCP. Adopting asymmetrical encryption technology, SSL uses key pair to encrypt/decrypt information. A key pair refers to a public key (contained in the certificate) and its corresponding private key. By default the switch has a certificate (self-signed certificate) and a corresponding private key. The Certificate/Key Download function enables the user to replace the default key pair.

ip http secure-server

Description

The **ip http secure-server** command is used to enable the SSL function globally on the switch. To disable the SSL function, please use **no ip http secure-server** command. Only the SSL function is enabled, a secure HTTPS connection can be established.

Syntax

ip http secure-server
no ip http secure-server

Command Mode

Global Configuration Mode

Example

Enable the SSL function:

```
TL-SG3424(config)# ip http secure-server
```

ip http secure-server download certificate

Description

The **ip http secure-server download certificate** command is used to download a certificate to the switch from TFTP server.

Syntax

ip http secure-server download certificate *ssl-cert ip-address ip-addr*

Parameter

ssl-cert — The name of the SSL certificate which is selected to download to the switch. The length of the name ranges from 1 to 25 characters. The Certificate must be BASE64 encoded.

ip-addr — The IP address of the TFTP server.

Command Mode

Global Configuration Mode

Example

Download a SSL Certificate named *ssl-cert* from TFTP server with the IP Address of 192.168.0.146:

```
TL-SG3424(config)# ip http secure-server download certificate ssl-cert
ip-address 192.168.0.146
```

ip http secure-server download key

Description

The **ip http secure-server download key** command is used to download a SSL key to the switch from TFTP server.

Syntax

```
ip http secure-server download key ssl-key ip-address ip-addr
```

Parameter

ssl-key — The name of the SSL key which is selected to download to the switch. The length of the name ranges from 1 to 25 characters. The Key must be BASE64 encoded.

ip-addr — The IP address of the TFTP server.

Command Mode

Global Configuration Mode

Example

Download a SSL Key named *ssl-key* from TFTP server with the IP Address of 192.168.0.146:

```
TL-SG3424(config)# ip http secure-server download key ssl-key ip-address
192.168.0.146
```

show ip http secure-server

Description

The **show ip http secure-server** command is used to display the global configuration of SSL.

Syntax

```
show ip http secure-server
```

Command Mode

Privileged EXEC Mode and Any Configuration Mode

Example

Display the global configuration of SSL:

```
TL-SG3424(config)# show ip http secure-server
```

Chapter 17 MAC Address Commands

MAC Address configuration can improve the network security by configuring the Port Security and maintaining the address information by managing the Address Table.

mac address-table static

Description

The **mac address-table static** command is used to add the static MAC address entry. To remove the corresponding entry, please use **no mac address-table static** command. The static address can be added or removed manually, independent of the aging time. In the stable networks, the static MAC address entries can facilitate the switch to reduce broadcast packets and enhance the efficiency of packets forwarding remarkably.

Syntax

```
mac address-table static mac mac-addr vid vid gigabitEthernet port  
no mac address-table static { mac mac-addr | vid vid | mac mac-addr vid vid | gigabitEthernet port }
```

Parameter

mac-addr —— The MAC address of the entry you desire to add.
vid —— The VLAN ID number of your desired entry. It ranges from 1 to 4094.
port —— The Ethernet port number of your desired entry.

Command Mode

Global Configuration Mode

Example

Add a static Mac address entry to bind the MAC address 00:02:58:4f:6c:23, VLAN1 and port 1 together:

```
TL-SG3424(config)# mac address-table static mac 00:02:58:4f:6c:23 vid 1  
interface gigabitEthernet 1/0/1
```

mac address-table aging-time

Description

The **mac address-table aging-time** command is used to configure aging time for the dynamic address. To return to the default configuration, please use **no mac address-table aging-time** command.

Syntax

mac address-table aging-time *aging-time*

no mac address-table aging-time

Parameter

aging-time — The aging time for the dynamic address. The value of it can be 0 or ranges from 10 to 630 seconds. When 0 is entered, the Auto Aging function is disabled. It is 300 by default.

Command Mode

Global Configuration Mode

Example

Configure the aging time as 500 seconds:

```
TL-SG3424(config)# mac address-table aging-time 500
```

mac address-table filtering

Description

The **mac address-table filtering** command is used to add the filtering address entry. To delete the corresponding entry, please use **no mac address-table filtering** command. The filtering address function is to forbid the undesired package to be forwarded. The filtering address can be added or removed manually, independent of the aging time.

Syntax

mac address-table filtering mac *mac-addr* **vid** *vid*

no mac address-table filtering {[**mac** *mac-addr*] [**vid** *vid*]}

Parameter

mac-addr — The MAC address to be filtered.

vid — The corresponding VLAN ID of the MAC address. It ranges from 1 to 4094.

Command Mode

Global Configuration Mode

Example

Add a filtering address entry of which VLAN ID is 1 and MAC address is 00:1e:4b:04:01:5d:

```
TL-SG3424(config)# mac address-table filtering mac 00:1e:4b:04:01:5d vid  
1
```

mac address-table max-mac-count

Description

The **mac address-table max-mac-count** command is used to configure the Port Security. To return to the default configurations, please use **no mac address-table max-mac-count** command. Port Security is to protect the switch from the malicious MAC address attack by limiting the maximum number of the MAC addresses that can be learned on the port. The port with Port Security feature enabled will learn the MAC address dynamically. When the learned MAC address number reaches the maximum, the port will stop learning. Therefore, the other devices with the MAC address unlearned can not access to the network via this port.

Syntax

```
mac address-table max-mac-count {[ max-number num ] [ mode { dynamic |  
static | permanent } ] [ status { disable | enable } ] }
```

```
no mac address-table max-mac-count
```

Parameter

num — The maximum number of MAC addresses that can be learned on the port. It ranges from 0 to 64. By default this value is 64.

dynamic | static | permanent — Learn mode for MAC addresses. There are three modes, including Dynamic mode, Static mode and Permanent mode. When Dynamic mode is selected, the learned MAC address will be deleted automatically after the aging time. When Static mode is selected, the learned MAC address will be out of the influence of the aging time and can only be deleted manually. The learned entries will be cleared after the switch is rebooted. When permanent mode is selected, the learned MAC address will be out of the influence of the aging time and can only be deleted manually too. However, the learned entries will be saved even the switch is rebooted.

status —— Enable or disable the Port Security function for a specified port. By default, this function is disabled.

Command Mode

Interface Configuration Mode (interface gigabitEthernet / interface range gigabitEthernet)

Example

Enable Port Security function for port 1, select Static mode as the learn mode, and specify the maximum number of MAC addresses that can be learned on this port as 30:

```
TL-SG3424(config)# interface gigabitEthernet 1/0/1
TL-SG3424(config-if)# mac address-table max-mac-count max-number 30
mode static status enable
```

show mac address-table address

Description

The **show mac address-table address** command is used to display the information of all Address entries.

Syntax

```
show mac address-table address { dynamic | static | drop | all }
```

Parameter

dynamic | static | drop | all —— The type of your desired entry

Command Mode

Privileged EXEC Mode and Any Configuration Mode

Example

Display the information of all Address entries:

```
TL-SG3424(config)# show mac address-table address all
```

show mac address-table aging-time

Description

The **show mac address-table aging-time** command is used to display the Aging Time of the MAC address.

Syntax

```
show mac address-table aging-time
```

Command Mode

Privileged EXEC Mode and Any Configuration Mode

Example

Display the Aging Time of the MAC address:

```
TL-SG3424(config)# show mac address-table aging-time
```

show mac address-table max-mac-count interface gigabitEthernet

Description

The **show mac address-table max-mac-count interface gigabitEthernet** command is used to display the security configuration of all ports or the specified port.

Syntax

```
show mac address-table max-mac-count interface gigabitEthernet [ port ]
```

Parameter

port — The Ethernet port number.

Command Mode

Privileged EXEC Mode and Any Configuration Mode

Example

Display the security configuration of all ports:

```
TL-SG3424(config)# show mac address-table max-mac-count interface  
gigabitEthernet
```

Display the security configuration of port 1:

```
TL-SG3424(config)# show mac address-table max-mac-count interface  
gigabitEthernet 1/0/1
```

show mac address-table interface gigabitEthernet

Description

The **show mac address-table interface gigabitEthernet** command is used to display the address configuration of the specified port.

Syntax

show mac address-table interface gigabitEthernet *port*

Parameter

port —— The Ethernet port number.

Command Mode

Privileged EXEC Mode and Any Configuration Mode

Example

Display the address configuration of port 1:

```
TL-SG3424(config)# show mac address-table interface gigabitEthernet
1/0/1
```

show mac address-table mac-num

Description

The **show mac address-table mac-num** command is used to display the total amount of MAC address table.

Syntax

show mac address-table mac-num

Command Mode

Privileged EXEC Mode and Any Configuration Mode

Example

Display the total amount of MAC address table:

```
TL-SG3424(config)# show mac address-table mac-num
```

show mac address-table mac

Description

The **show mac address-table mac** command is used to display the information of the specified MAC address.

Syntax

show mac address-table mac *mac-addr*

Parameter

mac-addr —— The specified MAC address.

Command Mode

Privileged EXEC Mode and Any Configuration Mode

Example

Display the information of the MAC address 00:00:00:00:23:00:00:

```
TL-SG3424(config)#show mac address-table mac 00:00:00:00:23:00:00
```

show mac address-table vlan

Description

The **show mac address-table vlan** command is used to display the MAC address configuration of the specified vlan.

Syntax

```
show mac address-table vlan vid
```

Parameter

vid ——The specified VLAN id.

Command Mode

Privileged EXEC Mode and Any Configuration Mode

Example

Display the MAC address configuration of vlan 1:

```
TL-SG3424(config)# show mac address-table vlan 1
```

Chapter 18 System Configuration Commands

System Configuration Commands can be used to configure the system information and system IP of the switch, and to reboot and reset the switch, upgrade the switch system and commands used for device diagnose, including loopback test and cable test.

system-time manual

Description

The **system-time manual** command is used to configure the system time manually.

Syntax

system-time manual *time*

Parameter

time — Set the date and time manually, in the format of MM/DD/YYYY- HH:MM: SS.

Command Mode

Global Configuration Mode

Example

Configure the system time as 02/14/2012- 12:30:00:

```
TL-SG3424(config)# system-time manual 02/14/2012-12:30:00
```

system-time ntp

Description

The **system-time ntp** command is used to configure the time zone and the IP Address for the NTP Server. The switch will get GMT automatically if it has connected to a NTP Server.

Syntax

system-time ntp { *timezone* } { *ntp-server* } { *backup-ntp-server* } { *fetching-rate* }

Parameter

timezone — Your local time-zone, and it ranges from GMT-12 to GMT+13. The detailed information that each time-zone means are displayed as follow:
GMT-12 — TimeZone for Eniwetok,Kwajalein.

GMT-11 — TimeZone for Midway Island, Samoa.
 GMT-10 — TimeZone for Hawaii.
 GMT-09 — TimeZone for Alaska.
 GMT-08 — TimeZone for Pacific Time.
 GMT-07 — TimeZone for Mountain Time(US Canada).
 GMT-06 — TimeZone for Central Time(US Canada).
 GMT-05 — TimeZone for Eastern Time(US Canada).
 GMT-04 — TimeZone for Atlantic Time(Canada).
 GMT-03 — TimeZone for Newfoundland, Brasilia, Buenos Aires.
 GMT-02 — TimeZone for Mid-Atlantic.
 GMT-01 — TimeZone for Azores, Cape Verde Is.
 GMT — TimeZone for Greenwich Mean Time, Dublin, London.
 GMT+01 — TimeZone for Berlin, Stockholm, Rome, Bern, Brussels.
 GMT+02 — TimeZone for Athens, Helsinki, Eastern Europe, Israel.
 GMT+03 — TimeZone for Baghdad, Kuwait, Nairobi, Riyadh, Moscow.
 GMT+04 — TimeZone for Abu Dhabi, Muscat, Kazan, Volgograd.
 GMT+05 — TimeZone for Islamabad, Karachi, Ekaterinburg.
 GMT+06 — TimeZone for Almaty, Dhaka.
 GMT+07 — TimeZone for Bangkok, Jakarta, Hanoi.
 GMT+08 — TimeZone for Beijing, Hong Kong, Perth, Singapore.
 GMT+09 — TimeZone for Tokyo, Osaka, Sapporo, Seoul, Yakutsk.
 GMT+10 — TimeZone for Brisbane, Canberra, Melbourne, Sydney.
 GMT+11 — TimeZone for Magadan, Solomon Is., New Caledonia.
 GMT+12 — TimeZone for Fiji, Kamchatka, Auckland.
 GMT+13 — TimeZone for Nuku'alofa.

ntp-server — The IP Address for the Primary NTP Server.
backup-ntp-server — The IP Address for the Secondary NTP Server.
fetching-rate — Specify the rate fetching time from NTP server.

Command Mode

Global Configuration Mode

Example

Configure the system time mode as NTP, the time zone is GMT-12, the primary NTP server is 133.100.9.2 and the secondary NTP server is 139.78.100.163, the fetching-rate is 11 hours:

```
TL-SG3424(config)# system-time ntp GMT-12 133.100.9.2 139.79.100.163
```

```
11
```

system-time dst predefined

Description

The **system-time dst predefined** command is used to select a predefined DST configuration and the configuration can be recycled.

Syntax

system-time dst predefined [USA | Australia | European | New-Zealand]

Parameter

USA | Australia | European | New-Zealand — Predefined DST mode, with four options: USA, Australia, European and New-Zealand. By default, the setting is “European”.

The DST time periods which the four predefined DST mode represents are displayed as follow:

USA: First Sunday in April, 02:00 ~ Last Sunday in October, 02:00.

Australia: First Sunday in October, 02:00 ~ First Sunday in April, 03:00.

European: Last Sunday in March, 01:00 ~ Last Sunday in October, 01:00.

New Zealand: First Sunday in October, 02:00 ~ Last Sunday in March, 03:00.

Command Mode

Global Configuration Mode

Example

Configure the DST period of the switch as European:

```
TL-SG3424(config)# system-time dst predefined European
```

system-time dst date

Description

The **system-time dst date** command is used to specify the DST configuration in Date mode. This configuration is one-off in use. By default, the current year is used as the starting time. DST time periods should be within 12 months over one/two year.

Syntax

system-time dst date { *smonth* } { *sday* } { *stime* } { *emonth* } { *eday* } { *etime* }
[*offset*]

Parameter

smonth — Month to start, with the options: Jan, Feb, Mar, Apr, May, Jun, Jul, Aug, Sep, Oct, Nov, Dec

sday — Day to start, ranging from 1 to 31. Please mind that the number of days depends on the month.

stime — Time to start, in the format of hh:mm.

emonth — Month to end, with the options: Jan, Feb, Mar, Apr, May, Jun, Jul, Aug, Sep, Oct, Nov, Dec

eday — Day to end, ranging from 1 to 31. Please mind that the number of days depends on the month.

etime — Time to end, in the format of hh:mm.

offset — Specify the time adding in minutes when Daylight Saving Time comes. The range of value depends and the default value is 60 minutes. It is optional.

Command Mode

Global Configuration Mode

Example

Configure the DST start time as 00:00 am on April 1st, the end time as 00:00 am on October 1st and the offset as 30 minutes:

```
TL-SG3424(config)# system-time dst date Apr 1 00:00 Oct 1 00:00 30
```

system-time dst recurring

Description

The **system-time dst recurring** command is used to specify the DST configuration in recurring mode. This configuration is recurring in use. The time period is not restricted to be within one year.

Syntax

```
system-time dst recurring { sweek } { sday } { smonth } { stime } { eweeek }  
{ eday } { emonth } { etime } [ offset ]
```

Parameter

sweek — Week to start, with the options: first, second, third, fourth, last.

sday — Day to start, with the options: Sun, Mon, Tue, Wed, Thu, Fri, Sat.

smonth — Month to start, with options: Jan, Feb, Mar, Apr, May, Jun, Jul, Aug, Sep, Oct, Nov, Dec.

stime — Time to start, in the format of: hh:mm.

eweeek — Week to end, with options: first, second, third, fourth, last.

eday — Day to end, with options: Sun, Mon, Tue, Wed, Thu, Fri, Sat.

emonth — Month to end, with options: Jan, Feb, Mar, Apr, May, Jun, Jul, Aug, Sep, Oct, Nov, Dec.

etime — Time to end, in the format of: hh:mm.

offset — Specify the time adding in minutes when Daylight Saving Time comes. The range of value depends and the default value is 60 minutes. It is optional.

Command Mode

Global Configuration Mode

Example

Specify the DST start time of the switch as 2:00 am on the first Sunday in May, the end time as 2:00 am on the last Sunday in October and the offset as 45 minutes:

```
TL-SG3424(config)# system-time dst recurring first Sun May 02:00 last Sun  
Oct 02:00 45
```

hostname

Description

The **hostname** command is used to configure the system name. To clear the system name information, please use **no hostname** command.

Syntax

hostname *hostname*

no hostname *hostname*

Parameter

hostname — System Name. The length of the name ranges from 1 to 32 characters. By default, it is the device name, for example "TL-SG3424".

Command Mode

Global Configuration Mode

Example

Configure the system name as TPLINK:

```
TL-SG3424(config)# hostname TPLINK
```

location

Description

The **location** command is used to configure the system location. To clear the system location information, please use **no location** command.

Syntax

location *location*

no location *location*

Parameter

location —— Device Location. It consists of 32 characters at most. It is “SHENZHEN” by default.

Command Mode

Global Configuration Mode

Example

Configure the system location as SHENZHEN:

```
TL-SG3424(config)# location SHENSHEN
```

contact-info

Description

The **contact-info** command is used to configure the system contact information. To clear the system contact information, please use **no contact-info** command.

Syntax

contact-info *contact_info*

no contact-info *contact_info*

Parameter

contact_info —— Contact Information. It consists of 32 characters at most. It is “www.tp-link.com” by default.

Command Mode

Global Configuration Mode

Example

Configure the system contact information as www.tp-link.com:

```
TL-SG3424(config)# contact-info www.tp-link.com
```

reset

Description

The **reset** command is used to reset the switch's software. After resetting, all configuration of the switch will restore to the factory defaults and your current settings will be lost.

Syntax

```
reset
```

Command Mode

Privileged EXEC Mode

Example

Reset the software of the switch:

```
TL-SG3424# reset
```

reboot

Description

The **reboot** command is used to reboot the switch. To avoid damage, please don't turn off the device while rebooting.

Syntax

```
reboot
```

Command Mode

Privileged EXEC Mode

Example

Reboot the switch:

```
TL-SG3424# reboot
```

copy running-config start-up config

Description

The **copy running-config start-up config** command is used to save the current settings.

Syntax

```
copy running-config start-up config
```

Command Mode

Privileged EXEC Mode

Example

Save current settings:

```
TL-SG3424# copy running-config start-up config
```

copy startup-config tftp

Description

The **copy startup-config tftp** command is used to backup the configuration file from TFTP server.

Syntax

```
copy startup-config tftp ip-address ip-addr filename name
```

Parameter

ip-addr — IP Address of the TFTP server.

name — Specify the name for the configuration file which would be backup.

Command Mode

Privileged EXEC Mode

Example

Backup the configuration files from TFTP server with the IP 192.168.0.148 and name this file config.cfg:

```
TL-SG3424# copy startup-config tftp ip-address 192.168.0.148 filename  
config.cfg
```

copy tftp startup-config

Description

The **copy tftp startup-config** command is used to download the configuration file to the switch from TFTP server.

Syntax

```
copy tftp startup-config ip-address ip-addr filename name
```

Parameter

ip-addr — IP Address of the TFTP server.

name — Specify the name for the configuration file which would be downloaded.

Command Mode

Privileged EXEC Mode

Example

Download the configuration file named as config.cfg to the switch from TFTP server with the IP 192.168.0.148:

```
TL-SG3424# copy startup-config tftp ip-address 192.168.0.148 filename
config.cfg
```

firmware upgrade

Description

The **firmware upgrade** command is used to upgrade the switch system file via the TFTP server.

Syntax

```
firmware upgrade ip-address ip-addr filename name
```

Parameter

ip-addr — IP Address of the TFTP server.

name — Specify the name for the firmware file.

Command Mode

Privileged EXEC Mode

Example

Upgrade the switch system file named as firmware.bin via the TFTP server with the IP address 192.168.0.148:

```
TL-SG3424# firmware upgrade ip-address 192.168.0.148 filename
firmware.bin
```

ping

Description

The **ping** command is used to test the connectivity between the switch and one node of the network.

Syntax

```
ping { ip_addr } [ -n count ] [ -l count ] [ -i count ]
```

Parameter

ip_addr — The IP address of the destination node for ping test.

-n count — The amount of times to send test data during Ping testing. It ranges from 1 to 10. By default, this value is 4.

-l count — The size of the sending data during ping testing. It ranges from 1 to 1024 bytes. By default, this value is 64.

-i count — The interval to send ICMP request packets. It ranges from 100 to 1000 milliseconds. By default, this value is 1000.

Command Mode

User EXEC Mode and Privileged EXEC Mode

Example

To test the connectivity between the switch and the network device with the IP 192.168.0.131, please specify the *count* (-l) as 512 bytes and *count* (-i) as 1000 milliseconds. If there is not any response after 8 times' Ping test, the connection between the switch and the network device is failed to establish:

```
TL-SG3424# ping 192.168.0.131 -n 8 -l 512
```

tracert

Description

The **tracert** command is used to test the connectivity of the gateways during its journey from the source to destination of the test data.

Syntax

```
tracert url [ maxHops ]
```

Parameter

url — The IP address of the destination device.

maxHops — The maximum number of the route hops the test data can pass through. It ranges from 1 to 30. By default, this value is 4.

Command Mode

User EXEC Mode and Privileged EXEC Mode

Example

Test the connectivity between the switch and the network device with the IP 192.168.0.131. If the destination device has not been found after 20 *maxHops*, the connection between the switch and the destination device is failed to establish:

```
TL-SG3424# traceroute 192.168.0.131 20
```

loopback interface

Description

The **loopback interface** command is used to test whether the port is available or not.

Syntax

```
loopback interface { gigabitEthernet port } { internal | external }
```

Parameter

port — The number of Ethernet port which is selected for loopback test.

internal | *external* — Loopback Type. There are two options, Internal and External.

Command Mode

User EXEC Mode and Privileged EXEC Mode

Example

Do an Internal-type loopback test for port 1:

```
TL-SG3424# loopback interface gigabitEthernet 1/0/1 internal
```

Do an External-type loopback test for port 1:

```
TL-SG3424# loopback interface gigabitEthernet 1/0/1 external
```

show system-time

Description

The **show system-time** command is used to display the current time system and its source.

Syntax

```
show system-time
```

Command Mode

Privileged EXEC Mode and Any Configuration Mode

Example

Display the time information of the switch:

```
TL-SG3424# show system-time
```

show system-time dst

Description

The **show system-time dst** command is used to display the DST time information of the switch.

Syntax

```
show system-time dst
```

Command Mode

Privileged EXEC Mode and Any Configuration Mode

Example

Display the DST time information of the switch

```
TL-SG3424# show system-time dst
```

show system-time ntp

Description

The **show system-time ntp** command is used to display the NTP mode configuration information.

Syntax

```
show system-time ntp
```

Command Mode

Privileged EXEC Mode and Any Configuration Mode

Example

Display the NTP mode configuration information of the switch:

```
TL-SG3424# show system-time ntp
```


show system-info

Description

The **show system-info** command is used to display system description, system name, device location, system contact, hardware version, firmware version, system time, run time and so on.

Syntax

```
show system-info
```

Command Mode

Privileged EXEC Mode and Any Configuration Mode

Example

Display the system information:

```
TL-SG3424# show system-info
```

show cable-diagnostics interface

Description

The **show cable-diagnostics interface** command is used to display the cable diagnostics of the connected Ethernet Port., which facilitates you to check the connection status of the cable connected to the switch, locate and diagnose the trouble spot of the network.

Syntax

```
show cable-diagnostics interface gigabitEthernet port
```

Parameter

port — The number of the port which is selected for Cable test.

Command Mode

Privileged EXEC Mode and Any Configuration Mode

Example

Show the cable-diagnostics of port 3:

```
TL-SG3424# show cable-diagnostics interface gigabitEthernet 1/0/3
```

Chapter 19 Ethernet Configuration Commands

Ethernet Configuration Commands can be used to configure the Bandwidth Control, Negotiation Mode and Storm Control for Ethernet ports.

interface gigabitEthernet

Description

The **interface gigabitEthernet** command is used to enter the Interface gigabitEthernet Configuration Mode and configure the corresponding Gigabit Ethernet port.

Syntax

```
interface gigabitEthernet port
```

Parameter

port — The Ethernet port number.

Command Mode

Global Configuration Mode

Example

To enter the Interface gigabitEthernet Configuration Mode and configure port 2:

```
TL-SG3424(config)# interface gigabitEthernet 1/0/2
```

interface range gigabitEthernet

Description

The **interface range gigabitEthernet** command is used to enter the interface range gigabitEthernet Configuration Mode and configure multiple Gigabit Ethernet ports at the same time.

Syntax

```
interface range gigabitEthernet port-list
```

Parameter

port-list — The list of Ethernet ports.

Command Mode

Global Configuration Mode

User Guidelines

Command in the **Interface Range gigabitEthernet** Mode is executed independently on all ports in the range. It does not effect the execution on the other ports at all if the command results in an error on one port.

Example

To enter the Interface range gigabitEthernet Configuration Mode, and configure ports 1, 2, 3, 6, 7 and 9 at the same time by adding them to one port-list:

```
TL-SG3424(config)# interface range gigabitEthernet 1/0/1-3,1/0/6-7,1/0/9
```

description

Description

The **description** command is used to add a description to the Ethernet port. To clear the description of the corresponding port, please use **no description** command.

Syntax

description *string*

no description

Parameter

string — Content of a port description, ranging from 1 to 16 characters.

Command Mode

Interface Configuration Mode (interface gigabitEthernet)

Example

Add a description Port #5 to port 5:

```
TL-SG3424(config)# interface gigabitEthernet 1/0/5
```

```
TL-SG3424(config-if)# description Port#5
```

shutdown

Description

The **shutdown** command is used to disable an Ethernet port. To enable this port again, please use **no shutdown** command.

Syntax

shutdown

no shutdown

Command Mode

Interface Configuration Mode (interface gigabitEthernet / interface range gigabitEthernet)

Example

Disable port 3:

```
TL-SG3424(config)# interface gigabitEthernet 1/0/3
TL-SG3424(config-if)# shutdown
```

flow-control

Description

The **flow-control** command is used to enable the flow-control function for a port. To disable the flow-control function for this corresponding port, please use **no flow-control** command. With the flow-control function enabled, the Ingress Rate and Egress Rate can be synchronized to avoid packet loss in the network.

Syntax

flow-control

no flow-control

Command Mode

Interface Configuration Mode (interface gigabitEthernet / interface range gigabitEthernet)

Example

Enable the flow-control function for port 3:

```
TL-SG3424(config)# interface gigabitEthernet 1/0/3
TL-SG3424(config-if)# flow-control
```

duplex

Description

The **duplex** command is used to configure the Duplex Mode for an Ethernet port. To return to the default configuration, please use **no duplex** command.

Syntax

duplex { full | half }

no duplex

Parameter

full | half — The duplex mode of the Ethernet port. There are two options: full-duplex mode (default) and half-duplex mode.

Command Mode

Interface Configuration Mode (interface gigabitEthernet / interface range gigabitEthernet)

Example

Configure the Duplex Mode as full-duplex for port 3:

```
TL-SG3424(config)# interface gigabitEthernet 1/0/3
TL-SG3424(config-if)# duplex full
```

speed

Description

The **speed** command is used to configure the Speed Mode for an Ethernet port. To return to the default configuration, please use **no speed** command.

Syntax

```
speed { 10 | 100 | 1000 | auto }
no speed
```

Parameter

10 | 100 | 1000 | auto — The speed mode of the Ethernet port. There are four options: 10Mbps, 100Mbps, 1000Mbps and Auto negotiation mode (default).

Command Mode

Interface Configuration Mode (interface gigabitEthernet / interface range gigabitEthernet)

Example

Configure the Speed Mode as 100Mbps for port 3:

```
TL-SG3424(config)# interface gigabitEthernet 1/0/3
TL-SG3424(config-if)# speed 100
```

storm-control broadcast

Description

The **storm-control broadcast** command is used to enable the broadcast control function. To disable the broadcast control function, please use **no storm-control broadcast** command. Broadcast control function allows the switch to filter broadcast in the network. If the transmission rate of the broadcast packets exceeds the set bandwidth, the packets will be automatically discarded to avoid network broadcast storm.

Syntax

```
storm-control broadcast [ rate rate ]  
no storm-control broadcast
```

Parameter

rate — Specify the bandwidth for receiving broadcast packets on the port. The packet traffic exceeding the bandwidth will be discarded. By default, the value is “128K”.

Command Mode

Interface Configuration Mode (interface gigabitEthernet / interface range gigabitEthernet)

Example

Enable the broadcast control function for port 5:

```
TL-SG3424(config)# interface gigabitEthernet 1/0/5  
TL-SG3424(config-if)# storm-control broadcast
```

storm-control multicast

Description

The **storm-control multicast** command is used to enable the multicast control function. To disable the multicast control function, please use **no storm-control multicast** command. Multicast control function allows the switch to filter multicast in the network. If the transmission rate of the multicast packets exceeds the set bandwidth, the packets will be automatically discarded to avoid network broadcast storm.

Syntax

```
storm-control multicast [ rate rate ]  
no storm-control multicast
```

Parameter

rate — Select the bandwidth for receiving multicast packets on the port. The packet traffic exceeding the bandwidth will be discarded. By default, the value is “128K”.

Command Mode

Interface Configuration Mode (interface gigabitEthernet / interface range gigabitEthernet)

Example

Enable the multicast control function for port 5:

```
TL-SG3424(config)# interface gigabitEthernet 1/0/5
TL-SG3424(config-if)# storm-control multicast
```

storm-control unicast

Description

The **storm-control unicast** command is used to enable the unicast control function. To disable the unicast control function, please use **no storm-control unicast** command. Unicast control function allows the switch to filter UL frame in the network. If the transmission rate of the UL frames exceeds the set bandwidth, the packets will be automatically discarded to avoid network broadcast storm.

Syntax

```
storm-control unicast [ rate rate ]
no storm-control unicast
```

Parameter

rate — Select the bandwidth for receiving UL-Frame on the port. The packet traffic exceeding the bandwidth will be discarded. By default, the value is “128K”.

Command Mode

Interface Configuration Mode (interface gigabitEthernet / interface range gigabitEthernet)

Example

Enable the unicast control function for port 5:

```
TL-SG3424(config)# interface gigabitEthernet 1/0/5
TL-SG3424(config-if)# storm-control unicast
```

bandwidth

Description

The **bandwidth** command is used to configure the bandwidth limit for an Ethernet port. To disable the bandwidth limit, please use **no bandwidth** command.

Syntax

bandwidth {[**ingress** *ingress-rate*] [**egress** *egress-rate*]}

no bandwidth { all | ingress | egress }

Parameter

ingress-rate — Specify the bandwidth for receiving packets. Range:1-102400 for the megaport, 1-1024000 for the gigaport.

egress-rate — Specify the bandwidth for sending packets. Range:1-102400 for the megaport, 1-1024000 for the gigaport.

Command Mode

Interface Configuration Mode (interface gigabitEthernet / interface range gigabitEthernet)

Example

Configure the ingress-rate as 5120Kbps and egress-rate as 1024Kbps for port 5:

```
TL-SG3424(config)# interface gigabitEthernet 1/0/5
TL-SG3424(config-if)# bandwidth ingress 5120 egress 1024
```

clear counters

Description

The **clear counters** command is used to clear the statistic information of all the Ethernet ports.

Syntax

clear counters

Command Mode

Global Configuration Mode

Example

Clear the statistic information of all ports

```
TL-SG3424(config)# clear counters
```


show interface status

Description

The **show interface status** command is used to display the connective-status of an Ethernet port.

Syntax

```
show interface [ gigabitEthernet port ] status
```

Parameter

port — The Ethernet port number.

Command Mode

Privileged EXEC Mode and Any Configuration Mode

Example

Display the connective-status of all ports:

```
TL-SG3424(config)# show interface status
```

Display the connective-status of port 1:

```
TL-SG3424(config)# show interface gigabitEthernet 1/0/1 status
```

show interface counters

Description

The **show interface counters** command is used to display the statistic information of all ports or an Ethernet port.

Syntax

```
show interface [ gigabitEthernet port ] counters
```

Parameter

port — The Ethernet port number.

Command Mode

Privileged EXEC Mode and Any Configuration Mode

Example

Display the statistic information of all Ethernet ports:

```
TL-SG3424(config)# show interface counters
```

Display the statistic information of port 2:

```
TL-SG3424(config)# show interface gigabitEthernet 1/0/2 counters
```

show interface description

Description

The **show interface description** command is used to display the description of all ports or an Ethernet port.

Syntax

```
show interface [ gigabitEthernet port ] description
```

Parameter

port — The Ethernet port number.

Command Mode

Privileged EXEC Mode and Any Configuration Mode

Example

Display the description of all Ethernet ports:

```
TL-SG3424(config)# show interface description
```

Display the description of port 2:

```
TL-SG3424(config)# show interface gigabitEthernet 1/0/2 description
```

show interface flowcontrol

Description

The **show interface flowcontrol** command is used to display the flow-control information of an Ethernet port.

Syntax

```
show interface [ gigabitEthernet port ] flowcontrol
```

Parameter

port — The Ethernet port number.

Command Mode

Privileged EXEC Mode and Any Configuration Mode

Example

Display the flow-control information of all Ethernet ports:

```
TL-SG3424# show interface flowcontrol
```

Display the flow-control information of port 2:

```
TL-SG3424# show interface gigabitEthernet 1/0/2 flowcontrol
```

show interface configuration

Description

The **show interface configuration** command is used to display the configurations of all ports or an Ethernet port, including Port-status, Flow Control, Negotiation Mode and Port-description.

Syntax

```
show interface [ gigabitEthernet port ] configuration
```

Parameter

port — The Ethernet port number.

Command Mode

Privileged EXEC Mode and Any Configuration Mode

Example

Display the configurations of all Ethernet ports:

```
TL-SG3424(config)# show interface configuration
```

Display the configurations of port 2:

```
TL-SG3424(config)# show interface gigabitEthernet 1/0/2 configuration
```

show storm-control

Description

The **show storm-control** command is used to display the storm-control information of Ethernet ports.

Syntax

```
show storm-control [ interface { gigabitEthernet port | range gigabitEthernet  
port-list } ]
```

Parameter

port — The Ethernet port number.

port-list — The list of Ethernet ports.

Command Mode

Privileged EXEC Mode and Any Configuration Mode

Example

Display the storm-control information of port 4, 5, 6, and 7:

```
TL-SG3424(config)# show storm-control interface range gigabitEthernet
1/0/4-7
```

show bandwidth

Description

The **show bandwidth** command is used to display the bandwidth-limit information of Ethernet ports.

Syntax

```
show bandwidth [interface { gigabitEthernet port | range gigabitEthernet
port-list }]
```

Parameter

port — The Ethernet port number.

port-list — The list of the Ethernet ports.

Command Mode

Privileged EXEC Mode and Any Configuration Mode

Example

Display the bandwidth-limit information of port 4:

```
TL-SG3424(config)# show bandwidth interface gigabitEthernet 1/0/4
```

Chapter 20 QoS Commands

QoS (Quality of Service) function is used to optimize the network performance. It provides you with network service experience of a better quality.

qos

Description

The **qos** command is used to configure CoS (Class of Service) based on port. To return to the default configuration, please use **no qos** command.

Syntax

```
qos cos-id
```

```
no qos
```

Parameter

cos-id — The priority of port. It ranges from 0 to 7, which represent CoS0-CoS7 respectively. By default, the priority is 0.

Command Mode

Interface Configuration Mode (interface gigabitEthernet / interface range gigabitEthernet)

User Guidelines

Port priority is one property of the port. When the port priority is specified, the data will be classified into the egress queue based on the CoS value of the ingress port and the mapping relation between the CoS and TC in IEEE 802.1P.

Example

Configure the priority of port 5 as 3:

```
TL-SG3424(config)# interface gigabitEthernet 1/0/5
TL-SG3424(config-if)# qos 3
```

qos dscp

Description

The **qos dscp** command is used to enable the mapping relation between DSCP Priority and CoS value. To disable the mapping relation, please use **no qos dscp** command.

Syntax

qos dscp

no qos dscp

Command Mode

Global Configuration Mode

User Guidelines

DSCP (DiffServ Code Point) is a new definition to IP ToS field given by IEEE. DSCP priorities are mapped to the corresponding 802.1p priorities. IP datagram will be classified into the egress queue based on the mapping relation between DSCP priority and CoS value.

Example

Enable the mapping relation between DSCP Priority and CoS value:

```
TL-SG3424(config)# qos dscp
```

qos queue cos-map

Description

The **qos queue cos-map** command is used to configure the mapping relation between IEEE 802.1P priority tag/IEEE 802.1Q tag, CoS value and the TC egress queue. To return to the default configuration, please use **no qos queue cos-map** command. When 802.1P Priority is enabled, the packets with 802.1Q tag are mapped to different priority levels based on 802.1P priority mode. The untagged packets are mapped based on port priority mode.

Syntax

qos queue cos-map { *tag/cos-id* } { *tc-id* }

no qos queue cos-map

Parameter

tag/cos-id — The 8 priority levels defined by IEEE 802.1P or the priority level the packets with tag are mapped to, which ranges from CoS 0 to CoS 7.

tc-id — The egress queue the packets with tag are mapped to. It ranges from 0 to 3, which represents TC0, TC1, TC2, TC3 respectively.

Command Mode

Global Configuration Mode

User Guidelines

1. By default, the mapping relation between tag/cos and the egress queue is:
0-TC1, 1-TC0, 2-TC0, 3-TC1, 4-TC2, 5-TC2, 6-TC3, 7-TC3
2. Among the priority levels TC0-TC3, the bigger value, the higher priority.

Example

Map CoS 5 to TC 2.:

```
TL-SG3424(config)# qos queue cos-map 5 2
```

qos queue dscp-map

Description

The **qos queue dscp-map** command is used to configure the mapping relation between DSCP Priority and the CoS value. To return to the default configuration, please use **no qos queue dscp-map** command. DSCP (DiffServ Code Point) is a new definition to IP ToS field given by IEEE. This field is used to divide IP datagram into 64 priorities. When DSCP Priority is enabled, IP datagram are mapped to different priority levels based on DSCP priority mode; non-IP datagram with IEEE 802.1Q tag are mapped to different priority levels based on IEEE 802.1P priority mode if IEEE 802.1P Priority is enabled; the untagged non-IP datagram are mapped based on port priority mode.

Syntax

```
qos queue dscp-map { dscp-list } { cos-id }
```

```
no qos queue dscp-map
```

Parameter

dscp-list — List of DSCP value. One or several DSCP values can be typed using comma to separate. Use a hyphen to designate a range of values, for instance, 1,4-7,11 indicates choosing 1,4,5,6,7,11. The DSCP value ranges from 0 to 63.

cos-id — The priority level the packets with tag are mapped to, which ranges from CoS 0 to CoS 7.

Command Mode

Global Configuration Mode

User Guidelines

By default, the mapping relation between tag and the egress queue is: (0-7)-CoS 0, (8-15)-CoS 1, (16-23)-CoS 2, (24-31)-CoS 3, (32-39)-CoS 4, (40-47)-CoS 5, (48-55)-CoS 6, (56-63)-CoS 7.

Example

Map DSCP values 10-12 to CoS 2:

```
TL-SG3424(config)# qos queue dscp-map 10-12 2
```

qos queue mode

Description

The **qos queue mode** command is used to configure the Schedule Mode. To return to the default configuration, please use **no qos queue mode** command. When the network is congested, the program that many packets complete for resources must be solved, usually in the way of queue scheduling. The switch will control the forwarding sequence of the packets according to the priority queues and scheduling algorithms you set. On this switch, the priority levels are labeled as TC0, TC1... TC3.

Syntax

```
qos queue mode { sp | wrr | sp+wrr | equ }
```

```
no qos queue mode
```

Parameter

sp — Strict-Priority Mode. In this mode, the queue with higher priority will occupy the whole bandwidth. Packets in the queue with lower priority are sent only when the queue with higher priority is empty.

wrr — Weight Round Robin Mode. In this mode, packets in all the queues are sent in order based on the weight value for each queue. The weight value ratio of TC0, TC1, TC2 and TC3 is 1:2:4:8.

sp+wrr — Strict-Priority + Weight Round Robin Mode. In this mode, the switch provides two scheduling groups, SP group and WRR group. Queues in SP group and WRR group are scheduled strictly based on Strict-Priority mode while the queues inside WRR group follow the WRR mode. In SP + WRR mode, TC3 is the SP group; TC0, TC1 and TC2 belong to the WRR group and the weight value ratio of TC0, TC1 and TC2 is 1:2:4. In this way, when scheduling queues, the switch allows TC3 to occupy the whole bandwidth following the SP mode and the TC0, TC1 and TC2 in the WRR group will take up the bandwidth according to their ratio 1:2:4.

equ —— Equal-Mode. In this mode, all the queues occupy the bandwidth equally. The weight value ratio of all the queues is 1:1:1:1.

Command Mode

Global Configuration Mode

Example

Specify the Schedule Mode as Weight Round Robin Mode:

```
TL-SG3424(config)# qos queue mode wrr
```

show qos interface

Description

The **show qos interface** command is used to display the configuration of QoS based on port priority.

Syntax

```
show qos interface [ gigabitEthernet port | range gigabitEthernet port-list ]
```

Parameter

port —— The Ethernet port number.

port-list —— The list of Ethernet ports.

Command Mode

Privileged EXEC Mode and Any Configuration Mode

Example

Display the configuration of QoS for port 5:

```
TL-SG3424# show qos interface gigabitEthernet 1/0/5
```

Display the configuration of QoS for ports 1-4:

```
TL-SG3424# show qos interface range gigabitEthernet 1/0/1-4
```

show qos cos-map

Description

The **show qos cos-map** command is used to display the configuration of IEEE 802.1P Priority and the mapping relation between cos-id and tc-id.

Syntax

```
show qos cos-map
```

Command Mode

Privileged EXEC Mode and Any Configuration Mode

Example

Display the configuration of IEEE 802.1P Priority and the mapping relation between cos-id and tc-id:

```
TL-SG3424# show qos cos-map
```

show qos dscp-map

Description

The **show qos dscp-map** command is used to display the configuration of DSCP Priority.

Syntax

```
show qos dscp-map
```

Command Mode

Privileged EXEC Mode and Any Configuration Mode

Example

Display the configuration of DSCP Priority:

```
TL-SG3424# show qos dscp-map
```

show qos queue mode

Description

The **show qos queue mode** command is used to display the schedule rule of the egress queues.

Syntax

```
show qos queue mode
```

Command Mode

Privileged EXEC Mode and Any Configuration Mode

Example

Display the schedule rule of the egress queues:

```
TL-SG3424# show qos queue mode
```

show qos status

Description

The **show qos status** command is used to display the status of IEEE 802.1P priority and DSCP priority.

Syntax

show qos status

Command Mode

Privileged EXEC Mode and Any Configuration Mode

Example

Display the status of IEEE 802.1P priority and DSCP priority:

```
TL-SG3424# show qos status
```

Chapter 21 Port Mirror Commands

Port Mirror refers to the process of forwarding copies of packets from one port to a monitoring port. Usually, the monitoring port is connected to data diagnose device, which is used to analyze the monitored packets for monitoring and troubleshooting the network.

monitor session destination interface

Description

The **monitor session destination interface** command is used to configure the monitoring port. Each monitor session has only one monitoring port. To change the monitoring port, please use the **monitor session destination interface** command by changing the port value. The **no monitor session** command is used to delete the corresponding monitor session.

Syntax

```
monitor session session_num destination interface gigabitEthernet port  
no monitor session session_num
```

Parameter

session_num — The monitor session number, ranging from 1 to 4.
port — The Ethernet port number.

Command Mode

Global Configuration Mode

Example

Create monitor session 1 and configure port 1 as the monitoring port:

```
TL-SG3424(config)# monitor session 1 destination interface  
gigabitEthernet 1/0/1
```

Delete the monitor session 1:

```
TL-SG3424(config)# no monitor session 1
```

monitor session source interface

Description

The **monitor session source interface** command is used to configure the monitored port. To delete the corresponding monitored port, please use **no monitor session source interface** command.

Syntax

```
monitor session session_num source interface gigabitEthernet port-list  
mode
```

```
no monitor session session_num source interface gigabitEthernet port-list  
mode
```

Parameter

session_num — The monitor session number, ranging from 1 to 4.

port-list — List of monitored port. It is multi-optional.

mode — The monitor mode. There are three options: rx, tx and both. Rx (ingress monitoring mode), means the incoming packets received by the monitored port will be copied to the monitoring port. TX (egress monitoring mode), indicates the outgoing packets sent by the monitored port will be copied to the monitoring port. Both (ingress and egress monitoring), presents the incoming packets received and the outgoing packets sent by the monitored port will both be copied to the monitoring port.

Command Mode

Global Configuration Mode

User Guidelines

1. The monitoring port is corresponding to current interface configuration mode.
2. Monitored ports number is not limited, but it can't be the monitoring port at the same time.
3. Whether the monitoring port and monitored ports are in the same VLAN or not is not demanded strictly.
4. The monitoring port and monitored ports cannot be link-aggregation member.

Example

Create monitor session 1, then configure port 4, 5, 7 as monitored port and enable ingress monitoring:

```
TL-SG3424(config)# monitor session 1 source interface gigabitEthernet
1/0/4-5,1/0/7 rx
```

Delete port 4 in monitor session 1 and its configuration:

```
TL-SG3424(config)# no monitor session 1 source interface
gigabitEthernet 1/0/4 rx
```

show monitor session

Description

The **show monitor session** command is used to display the configuration of port monitoring.

Syntax

```
show monitor session [session_num]
```

Parameter

session_num — The monitor session number, ranging from 1 to 4. It is optional. By default, the monitoring configuration of all monitor sessions is displayed.

Command Mode

Privileged EXEC Mode and Any Configuration Mode

Example

Display the monitoring configuration of monitor session 1:

```
TL-SG3424(config)# show monitor session 1
```

Display the monitoring configuration of all monitor sessions:

```
TL-SG3424(config)# show monitor session
```

Chapter 22 Port Isolation Commands

Port Isolation provides a method of restricting traffic flow to improve the network security by forbidding the port to forward packets to the ports that are not on its forwarding port list.

port isolation

Description

The **port isolation** command is used to configure the forward port list of a port, so that this port can only communicate with the ports on its port list. To delete the corresponding configuration, please use **no port isolation** command.

Syntax

```
port isolation gi-forward-list gi-forward-list  
no port isolation
```

Parameter

gi-forward-list — The list of Ethernet ports.

Command Mode

Interface Configuration Mode (interface gigabitEthernet / interface range gigabitEthernet)

Example

Set port 1, 2, and 4 to the forward port list of port 5:

```
TL-SG3424(config)# interface gigabitEthernet 1/0/5  
TL-SG3424(config-if)# port isolation gi-forward-list 1/0/1-2,1/0/4
```

Set all Ethernet ports to forward port list of port 2, namely restore to the default setting:

```
TL-SG3424(config)# interface gigabitEthernet 1/0/2  
TL-SG3424(config-if)# no port isolation
```

show port isolation interface

Description

The **show port isolation interface** command is used to display the forward port list of a port.

Syntax

show port isolation interface [gigabitEthernet *port*]

Parameter

port — The number of Ethernet port you want to show its forward port list, in the format of 1/0/2.

Command Mode

Privileged EXEC Mode and Any Configuration Mode

Example

Display the forward-list of port 2:

```
TL-SG3424# show port isolation interface gigabitEthernet 1/0/2
```

Display the forward-list of all Ethernet ports:

```
TL-SG3424# show port isolation interface
```


Chapter 23 Loopback Detection Commands

With loopback detection feature enabled, the switch can detect loops using loopback detection packets. When a loop is detected, the switch will display an alert or further block the corresponding port according to the configuration.

loopback-detection(global)

Description

The **loopback-detection** command is used to enable the loopback detection function globally. To disable it, please use **no loopback detection** command.

Syntax

loopback-detection

no loopback-detection

Command Mode

Global Configuration Mode

Example

Enable the loopback detection function globally:

```
TL-SG3424(config)# loopback-detection
```

loopback-detection interval

Description

The **loopback-detection interval** command is used to define the interval of sending loopback detection packets from switch ports to network, aiming at detecting network loops periodically.

Syntax

loopback-detection interval *interval-time*

Parameter

interval-time — The interval of sending loopback detection packets. It ranges from 1 to 1000 seconds. By default, this value is 30.

Command Mode

Global Configuration Mode

Example

Specify the interval-time as 50 seconds:

```
TL-SG3424(config)# loopback-detection interval 50
```

loopback-detection recovery-time

Description

The **loopback-detection recovery-time** command is used to configure the time after which the blocked port would automatically recover to normal status.

Syntax

```
loopback-detection recovery-time recovery-time
```

Parameter

recovery-time — The time after which the blocked port would automatically recover to normal status, and the loopback detection would restart. It is integral times of detection interval, ranging from 3 to 100 and the default value is 3.

Command Mode

Global Configuration Mode

Example

Configure the recovery-time as 3 times of detection interval:

```
TL-SG3424(config)# loopback-detection recovery-time 3
```

loopback-detection(interface)

Description

The **loopback-detection** command is used to enable the loopback detection function of the specified port. To disable it, please use **no loopback-detection** command.

Syntax

```
loopback-detection
```

```
no loopback-detection
```

Command Mode

Interface Configuration Mode (interface gigabitEthernet / interface range gigabitEthernet)

Example

Enable the loopback detection function of ports 1-3:

```
TL-SG3424(config)# interface range gigabitEthernet 1/0/1-3
TL-SG3424(Config-if)# loopback-detection
```

loopback-detection config

Description

The **loopback-detection config** command is used to configure the process-mode and recovery-mode for the ports by which the switch copes with the detected loops.

Syntax

```
loopback-detection config [ process-mode { alert | port-based }]
[ recovery-mode { auto | manual }]
```

Parameter

process-mode — The mode how the switch processes the detected loops.
Alert: When a loop is detected, display an alert. **Port based:** When a loop is detected, display an alert and block the port.

recovery-mode — The mode how the blocked port recovers to normal status.
Auto: Block status can be automatically removed after recovery time. **Manual:** Block status can only be removed manually.

Command Mode

Interface Configuration Mode (interface gigabitEthernet / interface range gigabitEthernet)

Example

Configure the loopback detection process-mode as port-based and recovery-mode as manual for port 2:

```
TL-SG3424(config)# interface gigabitEthernet 1/0/2
TL-SG3424(config-if)# loopback-detection config process-mode port-based
recovery-mode manual
```

loopback-detection recover

Description

The **loopback-detection recover** command is used to remove the block status of selected ports, recovering the blocked ports to normal status,

Syntax

loopback-detection recover

Command Mode

Interface Configuration Mode (interface gigabitEthernet / interface range gigabitEthernet)

Example

Recover the blocked port 2 to normal status:

```
TL-SG3424(config)# interface gigabitEthernet 1/0/2
TL-SG3424(config-if)# loopback-detection recover
```

show loopback-detection global

Description

The **show loopback-detection global** command is used to display the global configuration of loopback detection function such as loopback detection global status, loopback detection interval and loopback detection recovery time.

Syntax

show loopback-detection global

Command Mode

Privileged EXEC Mode and Any Configuration Mode

Example

Display the global configuration of loopback detection function:

```
TL-SG3424# show loopback-detection global
```

show loopback-detection interface

Description

The **show loopback-detection interface** command is used to display the configuration of loopback detection function and the status of the specified Ethernet port.

Syntax

show loopback-detection interface [gigabitEthernet *port*]

Parameter

port — The Ethernet port number.

Command Mode

Privileged EXEC Mode and Any Configuration Mode

Example

Display the configuration of loopback detection function and the status of all ports:

```
TL-SG3424# show loopback-detection interface
```

Display the configuration of loopback detection function and the status of port 5:

```
TL-SG3424# show loopback-detection interface gigabitEthernet 1/0/5
```

Chapter 24 ACL Commands

ACL (Access Control List) is used to filter data packets by configuring a series of match conditions, operations and time ranges. It provides a flexible and secured access control policy and facilitates you to control the network security.

time-range

Description

The **time-range** command is used to add Time-Range. To delete the corresponding Time-Range, please use **no time-range** command. A time-range based ACL enables you to implement ACL control over packets by differentiating the time-ranges. A time-range can be specified in each rule in an ACL. The rule takes effect only when the specified time-range is configured and the system time is within the time-range.

Syntax

```
time-range name  
no time-range name
```

Parameter

name — The Time-Range name, ranging from 1 to 16 characters.

Command Mode

Global Configuration Mode

Example

Add a time-range named tSeg1:

```
TL-SG3424(config)# time-range tSeg1
```

absolute

Description

The **absolute** command is used to configure a Time-Range into an absoluteness mode. To delete the corresponding absoluteness mode Time-range, please use **no absolute** command.

Syntax

```
absolute start start-date end end-date  
no absolute
```

Parameter

start-date — The start date in Absoluteness Mode, in the format of MM/DD/YYYY. By default, it is 01/01/2000.

end-date — The end date in Absoluteness Mode, in the format of MM/DD/YYYY. By default, it is 12/31/2000. The absoluteness mode will be disabled if the start date and end date are both in default value.

Command Mode

Time-range Create Configuration Mode

Example

Configure the time-range tSeg1 with time from May 5, 2012 to Oct. 5, 2012:

```
TL-SG3424(config)# time-range tSeg1
TL-SG3424(config-time-range)# absolute start 05/05/2012 end 10/05/2012
```

periodic

Description

The **periodic** command is used to configure the Time-Range into an periodic mode. To delete the corresponding periodic mode Time-Range, please use **no periodic** command.

Syntax

```
periodic [ week-date week-day ] [ time-slice1 time-slice ] [ time-slice2 time-slice ] [ time-slice3 time-slice ] [ time-slice4 time-slice ]
```

```
no periodic
```

Parameter

week-day — Periodic Mode, in the format of 1-3,6 or daily, off-day, working-day. 1-3, 6 represent Monday, Tuesday, Wednesday and Saturday; daily represents every day; off-day represents weekend and working-day represents working day. By default, the periodic mode is disabled.

time-slice — Create the time-slice, in the format of HH:MM-HH:MM.

Command Mode

Time-range Create Configuration Mode

Example

Configure the time-range tSeg1 with time from 8:30 to 12:00 at weekend:

```
TL-SG3424(config)# time-range tSeg1
```

```
TL-SG3424(config-time-range)# periodic week-date off-day time-slice1
08:30-12:00
```

holiday

Description

The **holiday** command is used to configure the time-range into Holiday Mode under Time-range Create Configuration Mode. To delete the corresponding Holiday Mode time-range, please use **no holiday** command.

Syntax

```
holiday
```

```
no holiday
```

Command Mode

Time-range Create Configuration Mode

Example

Configure the time-range tSeg1 into Holiday Mode:

```
TL-SG3424(config)# time-range tSeg1
TL-SG3424(config-time-range)# holiday
```

holiday(global)

Description

The **holiday** command is used to define a holiday. To delete the corresponding holiday, please use **no holiday** command.

Syntax

```
holiday name start-date start-date end-date end-date
```

```
no holiday
```

Parameter

name — The holiday name, ranging from 1 to 16 characters.

start-date — The start date of the holiday, in the format of MM/DD, for instance, 05/01.

end-date — The end date of the holiday, in the format of MM/DD, for instance, 05/03.

Command Mode

Global Configuration Mode

Example

Define National Day, configuring the start date as October 1st, and the end date as October 3rd:

```
TL-SG3424(config)# holiday nationalday start-date 10/01 end-date 10/03
```

access-list create

Description

The **access-list create** command is used to create standard-IP ACL and extend-IP ACL.

Syntax

```
access-list create access-list-num
```

Parameter

access-list-num — ACL ID, ranging from 100 to 299. The ID range of Standard-IP ACL ranges is 100-199 and the Extend-IP ACL is 200-299.

Command Mode

Global Configuration Mode

Example

Create a standard-IP ACL whose ID is 123:

```
TL-SG3424(config)# access-list create 123
```

mac access-list

Description

The **mac access-list** command is used to create MAC ACL. To set the detailed configurations for a specified MAC ACL, please use **mac access-list** command to access Mac Access-list Configuration Mode. To delete the MAC ACL, please use **no mac access-list**.

Syntax

```
mac access-list access-list-num  
no mac access-list access-list-num
```

Parameter

access-list-num — ACL ID, ranging from 0 to 99.

Command Mode

Global Configuration Mode

Example

Create a MAC ACL whose ID is 23:

```
TL-SG3424(config)# mac access-list 23
```

access-list standard

Description

The **access-list standard** command is used to add Standard-IP ACL rule. To delete the corresponding rule, please use **no access-list standard** command. Standard-IP ACLs analyze and process data packets based on a series of match conditions, which can be the source IP addresses and destination IP addresses carried in the packets.

Syntax

```
access-list standard acl-id rule rule-id [ deny | permit ] [[ sip source-ip ] smask source-ip-mask] [[ dip destination-ip ] dmask destination-ip-mask ] [ tseg time-segment ]
```

```
no access-list standard acl-id rule rule-id
```

Parameter

acl-id — The desired Standard-IP ACL for configuration.

rule-id — The rule ID.

deny — The operation to discard packets.

permit — The operation to forward packets. It is the default value.

source-ip — The source IP address contained in the rule.

source-ip-mask — The source IP address mask. It is required if you typed the source IP address.

destination-ip — The destination IP address contained in the rule.

destination-ip-mask — The destination IP address mask. It is required if you typed the destination IP address.

time-segment — The time-range for the rule to take effect. By default, it is not limited.

Command Mode

Global Configuration Mode

Example

Create a Standard-IP ACL whose ID is 120, and add Rule 10 for it. In the rule, the source IP address is 192.168.0.100, the source IP address mask is

255.255.255.0, the time-range for the rule to take effect is tSeg1, and the packets match this rule will be forwarded by the switch:

```
TL-SG3424(config)# access-list create 120
TL-SG3424(config)# access-list standard 120 rule 10 permit sip
192.168.0.100 smask 255.255.255.0 tseg tSeg1
```

access-list extended

Description

The **access-list extended** command is used to add Extended-IP ACL rule. To delete the corresponding rule, please use **no access-list extended** command.

Syntax

```
access-list extended acl-id rule rule-id [ deny | permit ] [[ sip source-ip ]
smask source-ip-mask ] [[ dip destination-ip] dmask destination-ip-mask ]
[ tseg time-segment ] [ dscp dscp ] [ s-port s-port ] [ d-port d-port ] [ tcpflag
tcpflag ] [ protocol protocol ] [ tos tos ] [ pri pri ]
no access-list extended acl-id rule rule-id
```

Parameter

acl-id — The desired Extended-IP ACL for configuration.

rule-id — The rule ID.

deny — The operation to discard packets.

permit — The operation to forward packets. It is the default value.

source-ip — The source IP address contained in the rule.

source-ip-mask — The source IP address mask. It is required if you typed the source IP address.

destination-ip — The destination IP address contained in the rule.

destination-ip-mask — The destination IP address mask. It is required if you typed the destination IP address.

time-segment — The time-range for the rule to take effect. By default, it is not limited.

dscp — Specify the dscp value, ranging from 0 to 63.

s-port — The source port number.

d-port — The destination port number.

tcpflag — Specify the flag value when using TCP protocol.

protocol — Configure the value of the matching protocol.

tos — Enter the IP ToS contained in the rule.

pri — Enter the IP Precedence contained in the rule.

Command Mode

Global Configuration Mode

Example

Create an Extended-IP ACL whose ID is 220, and add Rule 10 for it. In the rule, the source IP address is 192.168.0.100, the source IP address mask is 255.255.255.0, the time-range for the rule to take effect is tSeg1, and the packets match this rule will be forwarded by the switch:

```
TL-SG3424(config)# access-list create 220
TL-SG3424(config)# access-list extended 220 rule 10 permit sip
192.168.0.100 smask 255.255.255.0 tseg tSeg1
```

rule

Description

The **rule** command is used to configure MAC ACL rule. To delete the corresponding rule, please use **no rule** command.

Syntax

```
rule rule-id [ deny | permit ] [[ smac source-mac ] smask source-mac-mask ]
[[ dmac destination-mac ] dmask destination-mac-mask ] [ vid vlan-id ] [ type
ethernet-type ] [ pri user-pri ] [ tseg time-segment ]
```

```
no rule rule-id
```

Parameter

rule-id — The rule ID.

deny — The operation to discard packets.

permit — The operation to forward packets. It is the default value.

source-mac — The source MAC address contained in the rule.

source-mac-mask — The source MAC address mask. It is required if you typed the source MAC address.

destination-mac — The destination MAC address contained in the rule.

destination-mac-mask — The destination MAC address mask. It is required if you typed the destination MAC address.

vlan-id — The VLAN ID contained in the rule, ranging from 1 to 4094.

ethernet-type — EtherType contained in the rule, in the format of 4-hex number.

user-pri — The user priority contained in the rule, ranging from 0 to 7. By default, it is not limited.

time-segment — The time-range for the rule to take effect. By default, it is not limited.

Command Mode

Mac Access-list Configuration Mode

Example

Create a MAC ACL whose ID is 20, and add Rule 10 for it. In the rule, the source MAC address is 00:01:3F:48:16:23, the source MAC address mask is 11:11:11:11:11:00, VLAN ID is 2, the user priority is 5, the time-range for the rule to take effect is tSeg1, and the packets match this rule will be forwarded by the switch:

```
TL-SG3424(config)# mac access-list 20
TL-SG3424(config-mac-acl)# rule 10 permit smac 00:01:3F:48:16:23 smask
11:11:11:11:11:00 vid 2 pri 5 tseg tSeg1
```

access-list policy name

Description

The **access-list policy name** command is used to add Policy. To delete the corresponding Policy, please use **no access-list policy name** command. A Policy is used to control the data packets those match the corresponding ACL rules by configuring ACLs and actions together for effect. The operations here include stream mirror, stream condition, QoS Remarking and redirect.

Syntax

access-list policy name *name*

no access-list policy name *name*

Parameter

name — The Policy Name, ranging from 1 to 16 characters.

Command Mode

Global Configuration Mode

Example

Add a Policy named policy1:

```
TL-SG3424(config)# access-list policy name policy1
```

access-list policy action

Description

The **access-list policy action** command is used to add ACLs and create actions for the policy. To set the detailed configuration of actions for a policy, please use **access-list policy action** command to access Action Configuration Mode. To delete the corresponding actions, please use **no access-list policy action** command.

Syntax

```
access-list policy action policy-name acl-id
```

```
no access-list policy action policy-name acl-id
```

Parameter

policy-name — The Policy Name, ranging from 1 to 16 characters.

acl-id — The ID of the ACL to which the above policy is applied.

Command Mode

Global Configuration Mode

Example

Add ACL whose ID is 120 to policy1 and create an action for them:

```
TL-SG3424(config)# access-list policy action policy1 120
```

redirect interface

Description

The **redirect interface** command is used to configure Direction function of policy action for specified ports.

Syntax

```
redirect interface gigabitEthernet port
```

Parameter

port — The destination port number of redirect.

Command Mode

Action Configuration Mode

Example

Edit the actions for policy1. Forward the data packets matching ACL 120 in the

policy to port 2:

```
TL-SG3424(config)# access-list policy action policy1 120
TL-SG3424(config-action)# redirect interface gigabitEthernet 1/0/2
```

redirect vlan

Description

The **redirect vlan** command is used to configure Direction function of policy action for specified VLAN.

Syntax

```
redirect vlan vlan-id
```

Parameter

vlan-id — The VLAN ID of Redirect. The data packets matching the corresponding ACL will be forwarded in the specific VLAN. The VLAN ID ranges from 1 to 4094.

Command Mode

Action Configuration Mode

Example

Edit the actions for policy1. Forward the data packets matching ACL 120 in the policy to Fast Ethernet VLAN 1:

```
TL-SG3424(config)# access-list policy action policy1 120
TL-SG3424(config-action)# redirect vlan 1
```

s-condition

Description

The **s-condition** command is used to configure Stream Condition function of policy action.

Syntax

```
s-condition rate rate osd { none | discard }
```

Parameter

rate — The rate of Stream Condition, ranging from 0 to 100000kbps.

osd — Out of Band disposal of Stream Condition. It is the disposal way of the data packets those are transmitted beyond the rate. There are two options, none and discard. By default, the option is none.

Command Mode

Action Configuration Mode

Example

Edit the actions for policy1. For the data packets matching ACL 120 in the policy, if the rate beyond 1000kbps, they will be discarded by the switch:

```
TL-SG3424(config)# access-list policy action policy1 120
TL-SG3424(config-action)# s-condition rate 1000 osd discard
```

s-mirror

Description

The **s-mirror** command is used to configure Stream Mirror function of policy action to the specified port.

Syntax

```
s-mirror interface gigabitEthernet port
```

Parameter

port — The Mirror Port number of Stream Mirror.

Command Mode

Action Configuration Mode

Example

Edit the actions for policy1. Specify the mirror port for the data packets matching ACL 120 as port 2:

```
TL-SG3424(config)# access-list policy action policy1 120
TL-SG3424(config-action)# s-mirror interface gigabitEthernet 1/0/2
```

qos-remark

Description

The **qos-remark** command is used to configure QoS function of policy action.

Syntax

```
qos-remark dscp dscp priority pri
no qos-remark
```


Parameter

dscp — DSCP of QoS Remark. Specify the DSCP region for the data packets matching the corresponding ACL. DSCP ranges from 0 to 63. By default, it is not limited.

pri — Local Priority of QoS Remark. Specify the local priority for the data packets matching the corresponding ACL. Local Priority ranges from 0 to 3.

Command Mode

Action Configuration Mode

Example

Edit the actions for policy1. For the data packets matching ACL 120, specify the DSCP region as 30 and local priority 2:

```
TL-SG3424(config)# access-list policy action policy1 120
TL-SG3424(config-action)# qos-remark dscp 30 priority 2
```

access-list bind(interface)

Description

The **access-list bind** command is used to bind a policy to a specified port. To cancel the bind relation, please use **no access-list bind** command.

Syntax

```
access-list bind policy-name
no access-list bind policy-name
```

Parameter

policy-name — The name of the policy desired to bind.

Command Mode

Interface Configuration Mode (interface gigabitEthernet / interface range gigabitEthernet)

Example

Bind policy1 to port 2:

```
TL-SG3424(config)# interface gigabitEthernet 1/0/2
TL-SG3424(config-if)# access-list bind policy1
```

access-list bind(vlan)

Description

The **access-list bind** command is used to bind a policy to a VLAN. To cancel the bind relation, please use **no access-list bind** command.

Syntax

```
access-list bind policy-name  
no access-list bind policy-name
```

Parameter

policy-name — The name of the policy desired to bind.

Command Mode

Interface VLAN Mode

Example

Bind policy1 to VLAN 2:

```
TL-SG3424(config)# interface vlan 2  
TL-SG3424(config-if)# access-list bind policy1
```

show time-range

Description

The **show time-range** command is used to display the configuration of Time-Range.

Syntax

```
show time-range
```

Command Mode

Privileged EXEC Mode and Any Configuration Mode

Example

Display the configuration of Time-Range:

```
TL-SG3424(config)# show time-range
```

show holiday

Description

The **show holiday** command is used to display the defined holiday.

Syntax

show holiday

Command Mode

Privileged EXEC Mode and Any Configuration Mode

Example

Display the defined holiday:

```
TL-SG3424(config)# show holiday
```

show access-list

Description

The **show access-list** command is used to display configuration of ACL.

Syntax

show access-list *acl-id*

Parameter

acl-id — The ID of the ACL selected to display the configuration.

Command Mode

Privileged EXEC Mode and Any Configuration Mode

Example

Display the configuration of the MAC ACL whose ID is 20:

```
TL-SG3424(config)# show access-list 20
```

show access-list policy

Description

The **show access-list policy** command is used to display the information of a specified policy.

Syntax

show access-list policy *name*

Parameter

name — The Policy Name desired to show.

Command Mode

Privileged EXEC Mode and Any Configuration Mode

Example

Display the information of a policy named policy1:

```
TL-SG3424(config)# show access-list policy policy1
```

show access-list bind

Description

The **show access-list bind** command is used to display the configuration of Policy bind.

Syntax

```
show access-list bind
```

Command Mode

Privileged EXEC Mode and Any Configuration Mode

Example

Display the configuration of Policy bind:

```
TL-SG3424(config)# show access-list bind
```

Chapter 25 MSTP Commands

MSTP (Multiple Spanning Tree Protocol), compatible with both STP and RSTP and subject to IEEE 802.1s, can disbranch a ring network. STP is to block redundant links and backup links as well as optimize paths.

spanning-tree(global)

Description

The **spanning-tree** command is used to enable STP function globally. To disable the STP function, please use **no spanning-tree** command.

Syntax

spanning-tree
no spanning-tree

Command Mode

Global Configuration Mode

Example

Enable the STP function:

```
TL-SG3424(config)# spanning-tree
```

spanning-tree(interface)

Description

The **spanning-tree** command is used to enable STP function for a port. To disable the STP function, please use **no spanning-tree** command.

Syntax

spanning-tree
no spanning-tree

Command Mode

Interface Configuration Mode (interface gigabitEthernet / interface range gigabitEthernet)

Example

Enable the STP function for port 2:

```
TL-SG3424(config)# interface gigabitEthernet 1/0/2
```

spanning-tree common-config

Description

The **spanning-tree common-config** command is used to configure the parameters of the ports for comparison in the CIST and the common parameters of all instances. To return to the default configuration, please use **no spanning-tree common-config** command. CIST (Common and Internal Spanning Tree) is the spanning tree in a switched network, connecting all devices in the network.

Syntax

```
spanning-tree common-config [ port-priority pri ] [ ext-cost ext-cost ]
[ int-cost int-cost ] [ portfast { enable | disable } ] [ point-to-point { auto | open |
close } ]
```

```
no spanning-tree common-config
```

Parameter

pri — Port Priority, which must be multiple of 16 ranging from 0 to 240. By default, the port priority is 128. Port Priority is an important criterion on determining if the port connected to this port will be chosen as the root port. In the same condition, the port with the highest priority will be chosen as the root port. The lower value has the higher priority.

ext-cost — External Path Cost, which is used to choose the path and calculate the path costs of ports in different MST regions. It is an important criterion on determining the root port. The lower value has the higher priority. It ranges from 0 to 2000000. By default, it is 0 which is mean auto.

int-cost — Internal Path Cost, which is used to choose the path and calculate the path costs of ports in an MST region. It is an important criterion on determining the root port. The lower value has the higher priority. By default, it is automatic. It ranges from 0 to 2000000. By default, it is 0 which is mean auto.

portfast — Enable/ Disable Edge Port. By default, it is disabled. The edge port can transit its state from blocking to forwarding rapidly without waiting for forward delay.

point-to-point — The P2P link status, with auto, open and close options. By default, the option is auto. If the two ports in the P2P link are root port or designated port, they can transit their states to forwarding rapidly to reduce the unnecessary forward delay.

Command Mode

Interface Configuration Mode (interface gigabitEthernet / interface range gigabitEthernet)

Example

Enable the STP function of port 1, and configure the Port Priority as 64, ExtPath Cost as 100, IntPath Cost as 100, and then enable Edge Port:

```
TL-SG3424(config)# interface gigabitEthernet 1/0/1
TL-SG3424(config-if)# spanning-tree common-config port-priority 64
ext-cost 100 int-cost 100 portfast enable point-to-point open
```

spanning-tree mode

Description

The **spanning-tree mode** command is used to configure the STP mode of the switch. To return to the default configurations, please use **no spanning-tree mode** command.

Syntax

```
spanning-tree mode { stp | rstp | mstp }
no spanning-tree mode
```

Parameter

stp —Spanning Tree Protocol, the default value.
rstp —Rapid Spanning Tree Protocol
mstp —Multiple Spanning Tree Protocol

Command Mode

Global Configuration Mode

Example

Configure the spanning-tree mode as mstp:

```
TL-SG3424(config)# spanning-tree mode mstp
```

spanning-tree mst configuration

Description

The **spanning-tree mst configuration** command is used to access MST Configuration Mode from Global Configuration Mode, as to configure the VLAN-Instance mapping, region name and revision level. To return to the

default configuration of the corresponding Instance, please use **no spanning-tree mst configuration** command.

Syntax

spanning-tree mst configuration

no spanning-tree mst configuration

Command Mode

Global Configuration Mode

Example

Enter into the MST configuration mode:

```
TL-SG3424(config)# spanning-tree mst configuration
```

instance

Description

The **instance** command is used to configure the VLAN-Instance mapping. To remove the VLAN-instance mapping or disable the corresponding instance, please use **no instance** command. When an instance is disabled, the related mapping VLANs will be removed.

Syntax

instance *instance-id* **vlan** *vlan-id*

no instance *instance-id* [**vlan** *vlan-id*]

Parameters

instance-id — Instance ID, ranging from 1 to 8.

vlan-id — The VLAN ID selected to mapping with the corresponding instance.

Command Mode

MST Configuration Mode

Example

Map the VLANs 1-100 to Instance 1:

```
TL-SG3424(config)# spanning-tree mst configuration
```

```
TL-SG3424(config-mst)# instance 1 vlan 1-100
```

Disable Instance 1, namely remove all the mapping VLANs 1-100:

```
TL-SG3424(config)# spanning-tree mst configuration
```

```
TL-SG3424(config-mst)# no instance 1
```


Remove VLANs 1-50 in mapping VLANs 1-100 for Instance 1:

```
TL-SG3424(config)# spanning-tree mst configuration
TL-SG3424(config-mst)# no instance 1 vlan 1-50
```

name

Description

The **name** command is used to configure the region name of MST instance.

Syntax

```
name name
```

Parameters

name — The region name, used to identify MST region. It ranges from 1 to 32 characters.

Command Mode

MST Configuration Mode

Example

Configure the region name of MST as “region1”:

```
TL-SG3424(config)# spanning-tree mst configuration
TL-SG3424(config-mst)# name region1
```

revision

Description

The **revision** command is used to configure the revision level of MST instance.

Syntax

```
revision revision
```

Parameters

revision — The revision level for MST region identification, ranging from 0 to 65535.

Command Mode

MST Configuration Mode

Example

Configure the revision level of MST as 100:

```
TL-SG3424(config)# spanning-tree mst configuration
```

spanning-tree mst instance

Description

The **spanning-tree mst instance** command is used to configure the priority of MST instance. To return to the default value of MST instance priority, please use **no spanning-tree mst instance** command.

Syntax

spanning-tree mst instance *instance-id* **priority** *pri*

no spanning-tree mst instance *instance-id* **priority**

Parameter

instance-id — Instance ID, ranging from 1 to 8.

pri — MSTI Priority, which must be multiple of 4096 ranging from 0 to 61440. By default, it is 32768. MSTI priority is an important criterion on determining if the switch will be chosen as the root bridge in the specific instance.

Command Mode

Global Configuration Mode

Example

Enable the MST Instance 1 and configure its priority as 4096:

```
TL-SG3424(config)# spanning-tree mst instance 1 priority 4096
```

spanning-tree mst

Description

The **spanning-tree mst** command is used to configure MST Instance Port. To return to the default configuration of the corresponding Instance Port, please use **no spanning-tree mst** command. A port can play different roles in different spanning tree instance. You can use this command to configure the parameters of the ports in different instance IDs as well as view status of the ports in the specified instance.

Syntax

spanning-tree mst instance *instance-id* {[**port-priority** *pri*] | [**cost** *cost*]}

no spanning-tree mst instance *instance-id*

Parameter

instance-id — Instance ID, ranging from 1 to 8.

pri — Port Priority, which must be multiple of 16 ranging from 0 to 240. By default, it is 128. Port Priority is an important criterion on determining if the port will be chosen as the root port by the device connected to this port.

cost — Path Cost, ranging from 0 to 200000. The lower value has the higher priority. Its default value is 0 meaning “auto”.

Command Mode

Interface Configuration Mode (interface gigabitEthernet / interface range gigabitEthernet)

Example

Configure the priority of port 1 in MST Instance 1 as 64, and path cost as 2000:

```
TL-SG3424(config)# interface gigabitEthernet 1/0/1
TL-SG3424(config-if)# spanning-tree mst instance 1 port-priority 64 cost
2000
```

spanning-tree priority

Description

The **spanning-tree priority** command is used to configure the bridge priority. To return to the default value of bridge priority, please use **no spanning-tree priority** command.

Syntax

spanning-tree priority *pri*

no spanning-tree priority

Parameter

pri — Bridge priority, ranging from 0 to 61440. It is 32768 by default.

Command Mode

Global Configuration Mode

Example

Configure the bridge priority as 4096:

```
TL-SG3424(config)# spanning-tree priority 4096
```

spanning-tree tc-defend

Description

The **spanning-tree tc-defend** command is used to configure the TC Protect of Spanning Tree globally. To return to the default configuration, please use **no spanning-tree tc-defend** command. A switch removes MAC address entries upon receiving TC-BPDUs. If a malicious user continuously sends TC-BPDUs to a switch, the switch will be busy with removing MAC address entries, which may decrease the performance and stability of the network.

Syntax

```
spanning-tree tc-defend threshold threshold period period  
no spanning-tree tc-defend
```

Parameter

threshold — TC Threshold, ranging from 1 to 100 packets. By default, it is 20. TC Threshold is the maximum number of the TC-BPDUs received by the switch in a TC Protect Cycle.

period — TC Protect Cycle, ranging from 1 to 10 in seconds. By default, it is 5.

Command Mode

Global Configuration Mode

Example

Configure TC Threshold as 30 packets and TC Protect Cycle as 10 seconds:

```
TL-SG3424(config)# spanning-tree tc-defend threshold 30 period 10
```

spanning-tree timer

Description

The **spanning-tree timer** command is used to configure forward-time, hello-time and max-age of Spanning Tree. To return to the default configurations, please use **no spanning-tree timer** command.

Syntax

```
spanning-tree timer {[ forward-time forward-time ] [ hello-time hello-time ]  
[ max-age max-age ]}  
no spanning-tree timer
```

Parameter

forward-time — Forward Delay, which is the time for the port to transit its state after the network topology is changed. Forward Delay ranges from 4 to 30 in seconds and it is 15 by default. Otherwise, $2 * (\text{Forward Delay} - 1) \geq \text{Max Age}$.

hello-time — Hello Time, which is the interval to send BPDU packets, and used to test the links. Hello Time ranges from 1 to 10 in seconds and it is 2 by default. Otherwise, $2 * (\text{Hello Time} + 1) \leq \text{Max Age}$.

max-age — The maximum time the switch can wait without receiving a BPDU before attempting to reconfigure, ranging from 6 to 40 in seconds. By default, it is 20.

Command Mode

Global Configuration Mode

Example

Configure *forward-time*, *hello-time* and *max-age* for Spanning Tree as 16 seconds, 3 seconds and 22 seconds respectively:

```
TL-SG3424(config)# spanning-tree timer forward-time 16 hello-time 3
max-age 22
```

spanning-tree hold-count

Description

The **spanning-tree hold-count** command is used to configure the maximum number of BPDU packets transmitted per Hello Time interval. To return to the default configurations, please use **no spanning-tree hold-count** command.

Syntax

spanning-tree hold-count *value*

no spanning-tree hold-count

Parameter

value — The maximum number of BPDU packets transmitted per Hello Time interval, ranging from 1 to 20 in pps. By default, it is 5.

Command Mode

Global Configuration Mode

Example

Configure the hold-count of STP as 8pps:

```
TL-SG3424(config)# spanning-tree hold-count 8
```

spanning-tree max-hops

Description

The **spanning-tree max-hops** command is used to configure the maximum number of hops that occur in a specific region before the BPDU is discarded. To return to the default configurations, please use **no spanning-tree max-hops** command.

Syntax

```
spanning-tree max-hops value
```

```
no spanning-tree max-hops
```

Parameter

value — The maximum number of hops that occur in a specific region before the BPDU is discarded, ranging from 1 to 40 in hop. By default, it is 20.

Command Mode

Global Configuration Mode

Example

Configure the max-hops of STP as 30:

```
TL-SG3424(config)# spanning-tree max-hops 30
```

spanning-tree bpdudfilter

Description

The **spanning-tree bpdudfilter** command is used to enable the BPDU filter function for a port. With the function enabled, the port can be prevented from receiving and sending any BPDU packets. To disable the BPDU filter function, please use **no spanning-tree bpdudfilter** command.

Syntax

```
spanning-tree bpdudfilter
```

```
no spanning-tree bpdudfilter
```

Command Mode

Interface Configuration Mode (interface gigabitEthernet / interface range gigabitEthernet)

Example

Enable the BPDU filter function for port 2:

```
TL-SG3424(config)# interface gigabitEthernet 1/0/2
TL-SG3424(config-if)# spanning-tree bpdupfilter
```

spanning-tree bpduguard

Description

The **spanning-tree bpduguard** command is used to enable the BPDU protect function for a port. With the BPDU protect function enabled, the port will set itself automatically as ERROR-PORT when it receives BPDU packets, and the port will disable the forwarding function for a while. To disable the BPDU protect function, please use **no spanning-tree bpduguard** command.

Syntax

```
spanning-tree bpduguard
no spanning-tree bpduguard
```

Command Mode

Interface Configuration Mode (interface gigabitEthernet / interface range gigabitEthernet)

Example

Enable the BPDU protect function for port 2:

```
TL-SG3424(config)# interface gigabitEthernet 2
TL-SG3424(config-if)# spanning-tree bpduguard
```

spanning-tree guard loop

Description

The **spanning-tree guard loop** command is used to enable the Loop Protect function for a port. Loop Protect is to prevent the loops in the network brought by recalculating STP because of link failures and network congestions. To disable the Loop Protect function, please use **no spanning-tree guard loop** command.

Syntax

```
spanning-tree guard loop
no spanning-tree guard loop
```

Command Mode

Interface Configuration Mode (interface gigabitEthernet / interface range gigabitEthernet)

Example

Enable the Loop Protect function for port 2:

```
TL-SG3424(config)# interface gigabitEthernet 1/0/2
TL-SG3424(config-if)# spanning-tree guard loop
```

spanning-tree guard root

Description

The **spanning-tree guard root** command is used to enable the Root Protect function for a port. With the Root Protect function enabled, the root bridge will set itself automatically as ERROR-PORT when receiving BPDU packets with higher priority, in order to maintain the role of root ridge. To disable the Root Protect function, please use **no spanning-tree guard root** command.

Syntax

spanning-tree guard root

no spanning-tree guard root

Command Mode

Interface Configuration Mode (interface gigabitEthernet / interface range gigabitEthernet)

Example

Enable the Root Protect function for port 2:

```
TL-SG3424(config)# interface gigabitEthernet 1/0/2
TL-SG3424(config-if)# spanning-tree guard root
```

spanning-tree guard tc

Description

The **spanning-tree guard tc** command is used to enable the TC Protect of Spanning Tree function for a port. To disable the TC Protect of Spanning Tree function, please use **no spanning-tree guard tc** command. A switch removes MAC address entries upon receiving TC-BPDUs. If a malicious user continuously sends TC-BPDUs to a switch, the switch will be busy with

removing MAC address entries, which may decrease the performance and stability of the network. With the Protect of Spanning Tree function enabled, you can configure the number of TC-BPDUs in a required time, so as to avoid the process of removing MAC addresses frequently.

Syntax

```
spanning-tree guard tc  
no spanning-tree guard tc
```

Command Mode

Global Configuration Mode

Example

Enable the TC Protect of Spanning Tree for port 2:

```
TL-SG3424(config)# interface gigabitEthernet 1/0/2  
TL-SG3424(config-if)# spanning-tree guard tc
```

spanning-tree mcheck

Description

The **spanning-tree mcheck** command is used to enable MCheck.

Syntax

```
spanning-tree mcheck
```

Command Mode

Interface Configuration Mode (interface gigabitEthernet / interface range gigabitEthernet)

Example

Enable MCheck for port 2:

```
TL-SG3424(config)# interface gigabitEthernet 1/0/2  
TL-SG3424(config-if)# spanning-tree mcheck
```

show spanning-tree active

Description

The **show spanning-tree active** command is used to display the active information of spanning-tree.

Syntax

```
show spanning-tree active
```

Command Mode

Privileged EXEC Mode and Any Configuration Mode

Example

Display the active information of spanning-tree:

```
TL-SG3424(config)# show spanning-tree active
```

show spanning-tree bridge

Description

The **show spanning-tree bridge** command is used to display the bridge parameters.

Syntax

```
show spanning-tree bridge [ forward-time | hello-time | hold-count | max-age |  
max-hops | mode | priority | state ]
```

Command Mode

Privileged EXEC Mode and Any Configuration Mode

Example

Display the bridge parameters:

```
TL-SG3424(config)# show spanning-tree bridge
```

show spanning-tree interface

Description

The **show spanning-tree interface** command is used to display the spanning-tree information of all ports or a specified port.

Syntax

```
show spanning-tree interface [ gigabitEthernet port ] [ edge | ext-cost |  
int-cost | mode | p2p | priority | role | state | status ]
```

Parameter

port — The Ethernet port number.

Command Mode

Privileged EXEC Mode and Any Configuration Mode

Example

Display the spanning-tree information of all ports:

```
TL-SG3424(config)# show spanning-tree interface
```

Display the spanning-tree information of port 2:

```
TL-SG3424(config)# show spanning-tree interface gigabitEthernet 1/0/2
```

Display the spanning-tree mode information of port 2:

```
TL-SG3424(config)# show spanning-tree interface gigabitEthernet 1/0/2
mode
```

show spanning-tree interface-security

Description

The **show spanning-tree interface-security** command is used to display the protect information of all ports or a specified port.

Syntax

```
show spanning-tree interface-security [ gigabitEthernet port ] [ bpdudfilter |
bpduguard | loop | root | tc | tc-defend ]
```

Parameter

port — The Ethernet port number.

Command Mode

Privileged EXEC Mode and Any Configuration Mode

Example

Display the protect information of all ports:

```
TL-SG3424(config)# show spanning-tree interface-security
```

Display the protect information of port 1:

```
TL-SG3424(config)# show spanning-tree interface-security gigabitEthernet
1/0/1
```

Display the interface security bpdudfilter information:

```
TL-SG3424(config)# show spanning-tree interface-security bpdudfilter
```

show spanning-tree mst

Description

The **show spanning-tree mst** command is used to display the related information of MST Instance.

Syntax

```
show spanning-tree mst { configuration [ digest ] | instance instance-id
[ interface [ gigabitEthernet port ]]}
```

Parameter

instance-id — Instance ID desired to show, ranging from 1 to 8.

port — The Ethernet port number.

Command Mode

Privileged EXEC Mode and Any Configuration Mode

Example

Display the related information of MST Instance 1:

```
TL-SG3424(config)# show spanning-tree mst instance 1
```

Chapter 26 IGMP Commands

IGMP Snooping (Internet Group Management Protocol Snooping) is a multicast control mechanism running on Layer 2 switch. It can effectively prevent multicast groups being broadcasted in the network.

ip igmp snooping(global)

Description

The **ip igmp snooping** command is used to configure IGMP Snooping globally. To disable the IGMP Snooping function, please use **no ip igmp snooping** command.

Syntax

ip igmp snooping
no ip igmp snooping

Command Mode

Global Configuration Mode

Example

Enable IGMP Snooping function:

```
TL-SG3424(config)# ip igmp snooping
```

ip igmp snooping(interface)

Description

The **ip igmp snooping** command is used to enable the IGMP Snooping function for the desired port. To disable the IGMP Snooping function, please use **no ip igmp snooping** command.

Syntax

ip igmp snooping
no ip igmp snooping

Command Mode

Interface Configuration Mode (interface gigabitEthernet / interface range gigabitEthernet)

Example

Enable IGMP Snooping function of port 3:

```
TL-SG3424(config)# interface gigabitEthernet 1/0/3
TL-SG3424(config-if)# ip igmp snooping
```

ip igmp snooping immediate-leave

Description

The **ip igmp snooping immediate-leave** command is used to configure the Fast Leave function for port. To disable the Fast Leave function, please use **no ip igmp snooping immediate-leave** command.

Syntax

```
ip igmp snooping immediate-leave
no ip igmp snooping immediate-leave
```

Command Mode

Interface Configuration Mode (interface gigabitEthernet / interface range gigabitEthernet)

Example

Enable the Fast Leave function for port 3:

```
TL-SG3424(config)# interface gigabitEthernet 1/0/3
TL-SG3424(config-if)# ip igmp snooping immediate-leave
```

ip igmp snooping drop-unknown

Description

The **ip igmp snooping drop-unknown** command is used to process the unknown multicast as discard. To disable the operation of processing the unknown multicast as discard, please use **no ip igmp snooping drop-unknown** command.

Syntax

```
ip igmp snooping drop-unknown
no ip igmp snooping drop-unknown
```

Command Mode

Global Configuration Mode

Example

Specify the operation to process unknown multicast as discard:

```
TL-SG3424(config)# ip igmp snooping drop-unknown
```

ip igmp snooping vlan-config

Description

The **ip igmp snooping vlan-config** command is used to enable VLAN IGMP Snooping function or to modify IGMP Snooping parameters, and to create static multicast IP entry. To disable the VLAN IGMP Snooping function, please use **no ip igmp snooping vlan-config** command.

Syntax

ip igmp snooping vlan-config *vlan-id-list* [**rtime** *router-time* | **mtime** *member-time* | **ltime** *leave-time* | **rport** **interface** **gigabitEthernet** *port*]

ip igmp snooping vlan-config *vlan-id* **static** *ip* **interface** **gigabitEthernet** *port*

no ip igmp snooping vlan-config *vlan-id-list*

no ip igmp snooping vlan-config *vlan-id* **static** *ip*

Parameter

vlan-id-list — The ID list of the VLAN desired to modify configuration, ranging from 2 to 4094, in the format of 1-3, 5.

router-time — Router Port Time. Within this time, if the switch does not receive IGMP query message from the router port, it will consider this port is not a router port any more. Router Port Time ranges from 60 to 600 in seconds. By default, it is 300.

member-time — Member Port Time. Within this time, if the switch does not receive IGMP report message from the member port, it will consider this port is not a member port any more. Member Port Time ranges from 60 to 600 in seconds. By default, it is 260.

leave-time — Leave Time, which is the interval between the switch receiving a leave message from a host and the switch removing the host from the multicast groups. Leave Time ranges from 1 to 30 in seconds. By default, it is 1.

port — The Ethernet port number.

vlan-id — The VLAN ID of the multicast IP, ranging from 1 to 4094.

ip — The static multicast IP address.

port-list — The list of Ethernet ports.

Command Mode

Global Configuration Mode

Example

Enable the IGMP Snooping function and modify Router Port Time as 300 seconds, Member Port Time as 200 seconds for VLAN1-3, and set the Leave time as 15 seconds for VLAN1-2:

```
TL-SG3424(config)# ip igmp snooping vlan-config 1-3 rtime 300
```

```
TL-SG3424(config)# ip igmp snooping vlan-config 1-3 mtime 200
```

```
TL-SG3424(config)# ip igmp snooping vlan-config 1-2 ltime 15
```

Add static multicast IP address 225.0.0.1, which correspond to VLAN 2, and configure the forward port as port 1-3:

```
TL-SG3424(config)# ip igmp snooping vlan-config 2 static 225.0.0.1
```

```
interface gigabitEthernet 1/0/1-3
```

ip igmp snooping multi-vlan-config

Description

The **ip igmp snooping multi-vlan-config** command is used to create Multicast VLAN. To delete the corresponding Multicast VLAN, please use **no ip igmp snooping multi-vlan-config** command.

Syntax

```
ip igmp snooping multi-vlan-config [ vlan-id ] [ rtime router-time | mtime member-time | ltime leave-time | rport interface gigabitEthernet port ]
```

```
no ip igmp snooping multi-vlan-config
```

Parameter

vid — The ID of the VLAN desired to modify configuration, ranging from 2 to 4094.

router-time — Router Port Time. Within this time, if the switch does not receive IGMP query message from the router port, it will consider this port is not a router port any more. Router Port Time ranges from 60 to 600 in seconds. By default, it is 300.

member-time — Member Port Time. Within this time, if the switch does not receive IGMP report message from the member port, it will consider this port is not a member port any more. Member Port Time ranges from 60 to 600 in seconds. By default, it is 260.

leave-time — Leave Time, which is the interval between the switch receiving a leave message from a host and the switch removing the host from the multicast groups. Leave Time ranges from 1 to 30 in seconds. By default, it is 1.

port — The Ethernet port number.

Command Mode

Global Configuration Mode

Example

Enable Multicast VLAN 3, and configure Router Port Time as 100 seconds, Member Port Time 100 seconds, Leave Time 3 seconds, and Static Router Port port 3:

```
TL-SG3424(config)# ip igmp snooping multi-vlan-config 3 rtime 100
TL-SG3424(config)# ip igmp snooping multi-vlan-config 3 mtime 100
TL-SG3424(config)# ip igmp snooping multi-vlan-config 3 ltime 3
TL-SG3424(config)# ip igmp snooping multi-vlan-config 3 rport interface
gigabitEthernet 1/0/3
```

ip igmp snooping filter add-id

Description

The **ip igmp snooping filter add-id** command is used to configure the multicast IP-range desired to filter. To delete the corresponding IP-range, please use **no ip igmp snooping filter add-id** command. When IGMP Snooping is enabled, you can specified the multicast IP-range the ports can join so as to restrict users ordering multicast programs via configuring multicast filter rules. Multicast IP addresses ranges from 224.0.0.0 to 239.255.255.255. The range for receivers to join is from 224.0.1.0 to 239.255.255.255.

Syntax

ip igmp snooping filter add-id *addr-id list*

no ip igmp snooping filter add-id *addr-id list*

Parameter

addr-id list — The filtering address ID to be bound.

Command Mode

Interface Configuration Mode (interface gigabitEthernet / interface range gigabitEthernet)

Example

Bind the filtering address ID 2-6 to port 3:

```
TL-SG3424(config)# interface gigabitEthernet 1/0/3
TL-SG3424(config-if)# ip igmp snooping filter addr-id 2-6
```

ip igmp snooping filter(global)

Description

The **ip igmp snooping filter** command is used to add or modify the multicast filtering IP-range. To delete the multicast filtering IP-range, please use **no ip igmp snooping filter** command.

Syntax

```
ip igmp snooping filter id start-ip end-ip
no ip igmp snooping filter id
```

Parameter

id —— IP-range ID, ranging from 1 to 30.
start-ip —— The start multicast IP of the IP-range.
end-ip —— The end multicast IP of the IP-range.

Command Mode

Global Configuration Mode

Example

Modify the multicast IP-range whose ID is 3 as 225.1.1.1~226.3.2.1:

```
TL-SG3424(config)# ip igmp snooping filter 3 225.1.1.1 226.3.2.1
```

ip igmp snooping filter(interface)

Description

The **ip igmp snooping filter** command is used to configure Port Filter. To return to the default configuration, please use **no igmp snooping filter** command. When the switch receives IGMP report message, it examines the multicast filtering IP ID configured on the access port to determine if the port can join the multicast group. If the multicast IP is not filtered, the switch will add the port to the forward port list of the multicast group. Otherwise, the switch will drop the IGMP report message. In that way, you can control the multicast groups that users can access.

Syntax

ip igmp snooping filter

no ip igmp snooping filter

Command Mode

Interface Configuration Mode (interface gigabitEthernet / interface range gigabitEthernet)

Example

Enable IGMP Snooping filter function for port 3:

```
TL-SG3424(config)# interface gigabitEthernet 1/0/3
```

```
TL-SG3424(config-if)# ip igmp snooping filter
```

ip igmp snooping filter maxgroup

Description

The **ip igmp snooping filter maxgroup** command is used to specify the maximum number of multicast groups for a port to join in.

Syntax

ip igmp snooping filter maxgroup *maxgroup*

Parameter

maxgroup — The maximum number of multicast groups for a port to join in. It is used to prevent some ports taking up too much bandwidth.

Command Mode

Interface Configuration Mode (interface gigabitEthernet / interface range gigabitEthernet)

Example

Specify the maximum number of multicast groups for ports 2-5 to join in as 10:

```
TL-SG3424(config)# interface range gigabitEthernet 1/0/2-5
```

```
TL-SG3424(config-if-range)# ip igmp snooping filter maxgroup 10
```

ip igmp snooping filter mode

Description

The **ip igmp snooping filter mode** command is used to configure the Action mode for the desired port.

Syntax

ip igmp snooping filter mode *mode*

Parameter

mode — Action Mode, with refuse and accept options. Refuse indicates only the multicast packets whose multicast IP is not in the IP-range will be processed, while accept indicates only the multicast packets whose multicast IP is in the IP-range will be processed. By default, the option is “accept”.

Command Mode

Interface Configuration Mode (interface gigabitEthernet / interface range gigabitEthernet)

Example

Specify the Action Mode as accept for port 3:

```
TL-SG3424(config)# interface gigabitEthernet 1/0/3
TL-SG3424(config-if)# ip igmp snooping filter mode accept
```

show ip igmp snooping

Description

The **show ip igmp snooping** command is used to display the global configuration of IGMP snooping.

Syntax

show ip igmp snooping

Command Mode

Privileged EXEC Mode and Any Configuration Mode

Example

Display the global configuration of IGMP:

```
TL-SG3424# show ip igmp snooping
```

show ip igmp snooping interface

Description

The **show ip igmp snooping interface** command is used to display the port configuration of IGMP snooping.

Syntax

```
show ip igmp snooping interface gigabitEthernet [ port | port-list ]  
{ basic-config | filter | packet-stat }
```

Parameter

port — The Ethernet port number.

port-list — The list of Ethernet ports.

basic-config | filter | packet-stat — The related configuration information selected to display.

Command Mode

Privileged EXEC Mode and Any Configuration Mode

Example

Display the IGMP filter configuration of all ports:

```
TL-SG3424# show ip igmp snooping interface gigabitEthernet filter
```

Display the IGMP basic configuration of port 2:

```
TL-SG3424# show ip igmp snooping interface gigabitEthernet 1/0/2  
basic-config
```

Display the IGMP packet statistics of ports 1-4:

```
TL-SG3424# show ip igmp snooping interface gigabitEthernet 1/0/1-4  
packet-stat
```

show ip igmp snooping vlan

Description

The **show ip igmp snooping vlan** command is used to display the VLAN configuration of IGMP snooping.

Syntax

```
show ip igmp snooping vlan [ vlan-id ]
```

Parameter

vlan-id — The VLAN ID selected to display.

Command Mode

Privileged EXEC Mode and Any Configuration Mode

Example

Display the IGMP snooping configuration information of VLAN 2:

```
TL-SG3424# show ip igmp snooping vlan 2
```

show ip igmp snooping multi-vlan

Description

The **show ip igmp snooping multi-vlan** command is used to display the Multicast VLAN configuration.

Syntax

```
show ip igmp snooping multi-vlan
```

Command Mode

Privileged EXEC Mode and Any Configuration Mode

Example

Display the Multicast VLAN configuration:

```
TL-SG3424# show ip igmp snooping multi-vlan
```

show ip igmp snooping groups

Description

The **show ip igmp snooping groups** command is used to display the information of all IGMP snooping groups. It can be extended to some other commands to display the dynamic and static multicast information of a selected VLAN.

Syntax

```
show ip igmp snooping groups [ vlan vlan-id ] [ count | dynamic | dynamic count | static | static count ]
```

Parameter

vlan-id —The VLAN ID selected to display the information of all multicast items.

Command Mode

Privileged EXEC Mode and Any Configuration Mode

Example

Display the information of all IGMP snooping groups:

```
TL-SG3424#show ip igmp snooping groups
```

Display all the multicast entries in VLAN 5:

```
TL-SG3424(config)#show ip igmp snooping groups vlan 5
```

Display the count of multicast entries in VLAN 5:

```
TL-SG3424(config)#show ip igmp snooping groups vlan 5 count
```

Display the dynamic multicast groups of VLAN 5

```
TL-SG3424(config)#show ip igmp snooping groups vlan 5 dynamic
```

Display the static multicast groups of VLAN 5

```
TL-SG3424(config)#show ip igmp snooping groups vlan 5 static
```

Display the count of dynamic multicast entries of VLAN 5

```
TL-SG3424(config)#show ip igmp snooping groups vlan 5 dynamic count
```

Display the count of static multicast entries of VLAN 5

```
TL-SG3424(config)#show ip igmp snooping groups vlan 5 static count
```

show ip igmp snooping filter

Description

The **show ip igmp snooping filter** command is used to display the Multicast Filter Address table.

Syntax

```
show ip igmp snooping filter [ filter-addr-id-list ]
```

Parameter

filter-addr-id-list —The multicast ID selected to display the multicast filter address information. It is optional.

Command Mode

Privileged EXEC Mode and Any Configuration Mode

Example

Display all the multicast filter address information:

```
TL-SG3424(config)# show ip igmp snooping filter
```

Chapter 27 SNMP Commands

SNMP (Simple Network Management Protocol) functions are used to manage the network devices for a smooth communication, which can facilitate the network administrators to monitor the network nodes and implement the proper operation.

snmp-server

Description

The **snmp-server** command is used to enable the SNMP function. By default, it is disabled. To return to the default configuration, please use **no snmp-server** command.

Syntax

```
snmp-server  
no snmp-server
```

Command Mode

Global Configuration Mode

Example

Enable the SNMP function:

```
TL-SG3424(config)# snmp-server
```

snmp-server view

Description

The **snmp-server view** command is used to add View. To delete the corresponding View, please use **no snmp-server view** command. The OID (Object Identifier) of the SNMP packets is used to describe the managed objects of the switch, and the MIB (Management Information Base) is the set of the OIDs. The SNMP View is created for the SNMP management station to manage MIB objects.

Syntax

```
snmp-server view name mib-oid { include | exclude }  
no snmp-server view name mib-oid
```

Parameter

name — The entry name of View, ranging from 1 to 16 characters. Each View includes several entries with the same name.

mib-oid — MIB Object ID. It is the Object Identifier (OID) for the entry of View, ranging from 1 to 61 characters.

include | exclude — View Type, with *include* and *exclude* options. They represent the view entry can/cannot be managed by the SNMP management station individually.

Command Mode

Global Configuration Mode

Example

Add a View named *view1*, configuring the OID as 1.3.6.1.6.3.20, and this OID can be managed by the SNMP management station:

```
TL-SG3424(config)# snmp-server view view1 1.3.6.1.6.3.20 include
```

snmp-server group

Description

The **snmp-server group** command is used to manage and configure the SNMP group. To delete the corresponding SNMP group, please use **no snmp-server group** command. SNMP v3 provides the VACM (View-based Access Control Model) and USM (User-Based Security Model) mechanisms for authentication. The users in the SNMP Group can manage the device via the Read View, Write View and Notify View. And the authentication mode and the privacy mode guarantee the high security for the communication between the management station and the managed device.

Syntax

```
snmp-server group name [ smode { v1 | v2c | v3 } ] [ slev { noAuthNoPriv | authNoPriv | authPriv } ] [ read read-view ] [ write write-view ] [ notify notify-view ]
```

```
no snmp-server group name smode { v1 | v2c | v3 } slev { noAuthNoPriv | authNoPriv | authPriv }
```

Parameter

name — The SNMP Group name, ranging from 1 to 16 characters. The Group Name, Security Model and Security Level compose the identifier of the SNMP Group. These three items of the Users in one group should be the same.

smode — Security Model, with v1、v2c and v3 options. They represent SNMP v1, SNMP v2c and SNMP v3.

slev — The Security Level of SNMP v3 Group. There are three options, including noAuthNoPriv (no authorization and no encryption)、authNoPriv (authorization and no encryption) and authPriv (authorization and encryption).

By default, the Security Level is noAuthNoPriv. There is no need to configure this in SNMP v1 Mode and SNMP v2c Mode.

read-view — Select the View to be the Read View. The management access is restricted to read-only, and changes cannot be made to the assigned SNMP View.

write-view — Select the View to be the Write View. The management access is writing only and changes can be made to the assigned SNMP View. The View defined both as the Read View and the Write View can be read and modified.

notify-view — Select the View to be the Notify View. The management station can receive notification messages of the assigned SNMP view generated by the switch's SNMP agent.

Command Mode

Global Configuration mode

Example

Add a group, and configure the name as group 1, the Security Model as SNMP v3, the security level as authNoPriv, the management access to the assigned View viewDefault as read-write, besides the notification messages sent by View viewDefault can be received by Management station:

```
TL-SG3424(config)# snmp-server group group1 smode v3 slev authNoPriv
read viewDefault write viewDefault notify viewDefault
```

Delete group 1:

```
TL-SG3424(config)# no snmp-server group group1 smode v3 slev
authNoPriv
```

snmp-server user

Description

The **snmp-server user** command is used to add User. To delete the corresponding User, please use **no snmp-server user** command. The User in a SNMP Group can manage the switch via the management station software. The User and its Group have the same security level and access right.

Syntax

```
snmp-server user name { local | remote } group-name [ smode { v1 | v2c | v3 } ]
[ slev { noAuthNoPriv | authNoPriv | authPriv } ] [ cmode { none | MD5 | SHA } ]
[ cpwd confirm-pwd ] [ emode { none | DES } ] [ epwd encrypt-pwd ]
no snmp-server user name
```

Parameter

name — User Name, ranging from 1 to 16 characters.

local | *remote* — User Type, with *local* and *remote* options. *local* indicates that the user is connected to a local SNMP engine, while *remote* means that the user is connected to a remote SNMP engine.

group-name — The Group Name of the User. The User is classified to the corresponding Group according to its Group Name, Security Model and Security Level.

smode — The Security Model of the User, with *v1*, *v2c* and *v3* options. By default, the option is *v1*. The Security Model of the User must be the same with that of the Group which the User belongs to.

slev — The Security Level of SNMP v3 Group. There are three options, including *noAuthNoPriv* (no authorization and no encryption), *authNoPriv* (authorization and no encryption) and *authPriv* (authorization and encryption). By default, the option is “*noAuthNoPriv*”. The Security Level of the User must be the same with that of the Group which the User belongs to.

cmode — The Authentication Mode of the SNMP v3 User, with *none*, *MD5* and *SHA* options. *none* indicates no authentication method is used, *MD5* indicates the port authentication is performed via HMAC-MD5 algorithm and *SHA* indicates the port authentication is performed via SHA (Secure Hash Algorithm). *SHA* authentication mode has a higher security than *MD5* mode. By default, the Authentication Mode is “*none*”.

confirm-pwd — Authentication Password, ranging from 1 to 16 characters.

emode — The Privacy Mode of the SNMP v3 User, with *none* and *DES* options. *none* indicates no privacy method is used, and *DES* indicates DES encryption method is used. By default, the Privacy Mode is “*none*”.

encrypt-pwd — Privacy Password, ranging from 1 to 16 characters.

Command Mode

Global Configuration Mode

Example

Add Local User *admin* to Group *group2*, and configure the Security Model of the user as *v3*, the Security Level of the group as *authPriv*, the Authentication Mode of the user as *MD5*, the Authentication Password as *11111*, the Privacy Mode as *DES*, and the Privacy Password as *22222*:

```
TL-SG3424(config)# snmp-server user admin local group2 smode v3 slev
authPriv cmode MD5 cpwd 11111 emode DES epwd 22222
```

snmp-server community

Description

The **snmp-server community** command is used to add Community. To delete the corresponding Community, please use **no snmp-server community** command. SNMP v1 and SNMP v2c adopt community name authentication. The community name can limit access to the SNMP agent from SNMP network management station, functioning as a password.

Syntax

```
snmp-server community name { read-only | read-write } mib-view  
no snmp-server community name
```

Parameter

name — Community Name, ranging from 1 to 16 characters.

read-only | read-write — The access rights of the community, with read-only and read-write options.

mib-view — The MIB View for the community to access.

Command Mode

Global Configuration Mode

Example

Add community public, and the community has read-write management right to View viewDefault:

```
TL-SG3424(config)# snmp-server community public read-write viewDefault
```

snmp-server host

Description

The **snmp-server host** command is used to add Notification. To delete the corresponding Notification, please use **no snmp-server host** command.

Syntax

```
snmp-server host ip udp-port user-name [ smode { v1 | v2c | v3 } ] [ slev  
{ noAuthNoPriv | authNoPriv | authPriv } ] [ type { trap | inform } ] [ retries retries ]  
[ timeout timeout ]  
no snmp-server host ip user-name
```

Parameter

ip — The IP Address of the management Host.

udp-port — UDP port, which is used to send notifications. The UDP port functions with the IP address for the notification sending. It ranges from 1 to 65535.

user-name — The User name of the management station.

smode — The Security Model of the management station, with v1, v2c and v3 options. By default, the option is v1.

slev — The Security Level of SNMP v3 Group. There are three options, including noAuthNoPriv (no authorization and no encryption), authNoPriv (authorization and no encryption) and authPriv (authorization and encryption). By default, the option is “noAuthNoPriv”.

type — The type of the notifications, with trap and inform options. Trap indicates traps are sent, while inform indicates informs are sent. The inform type has a higher security than the trap type and resend and timeout need to be configured if you select this option. You can only select the trap type in Security Model v1. By default, the type of the notifications is “trap”.

retries — The amount of times the switch retries an inform request, ranging from 1 to 255. The switch will resend the inform request if it doesn't get the response from the management station during the Timeout interval, and it will terminate resending the inform request if the resending times reach the specified Retry times.

timeout — The maximum time for the switch to wait for the response from the management station before resending a request, ranging from 1 to 3600 in seconds.

Command Mode

Global Configuration Mode

Example

Add a Notification entry, and configure the IP Address of the management Host as 192.168.0.146, the UDP port as 162, the User name of the management station as admin, the Security Model of the management station as v2c, the type of the notifications as inform, the maximum time for the switch to wait as 1000 seconds, and the retries time as 100:

```
TL-SG3424(config)# snmp-server host 192.168.0.146 162 admin smode v2c
type inform retries 100 timeout 1000
```

snmp-server engineID

Description

The **snmp-server engineID** command is used to configure the local and remote engineID of the switch. To restore to the default setting, please use **no snmp-server engineID** command.

Syntax

```
snmp-server engineID { [ local local-engineID ] [ remote remote-engineID ] }  
no snmp-server engineID
```

Parameter

local-engineID — Local Engine ID for local clients. The Engine ID is a unique alphanumeric string used to identify the SNMP engine on the switch. Its length ranges from 10 to 64 hexadecimal characters, which must be even number meanwhile.

remote-engineID — Remote Engine ID for the switch. The Engine ID is a unique alphanumeric string used to identify the SNMP engine on the remote device which receives informs from the switch. Its length ranges from 10 to 64 hexadecimal characters, which must be even number meanwhile. The **snmp-server engineID** will be disabled if the **local** and **remote** are both not configured.

Command Mode

Global Configuration Mode

Example

Specify the local engineID as 1234567890, and the remote engineID as abcdef123456:

```
TL-SG3424(config)# snmp-server engineID local 1234567890 remote  
abcdef123456
```

rmon history

Description

The **rmon history** command is used to configure the history sample entry. To return to the default configuration, please use **no rmon history** command. RMON (Remote Monitoring), basing on SNMP architecture, functions to monitor the network. History Group is one of the commonly used RMON Groups. After a history group is configured, the switch collects network statistics information

periodically, based on which the management station can monitor network effectively.

Syntax

```
rmon history index interface gigabitEthernet port [ interval seconds ]  
[ owner owner-name ]
```

```
no rmon history index
```

Parameter

index — The index number of the entry, ranging from 1 to 12, in the format of 1-3,5.

port — The Ethernet port number.

seconds — The interval to take samplings from the port, ranging from 10 to 3600 in seconds. By default, it is 1800.

owner-name — The owner of the history sample entry, ranging from 1 to 16 characters. By default, it is “monitor”.

Command Mode

Global Configuration Mode

Example

Configure the sample port as Gi1/0/2 and the sample interval as 100 seconds for the entry 1-3:

```
TL-SG3424(config)# rmon history 1-3 interface gigabitEthernet 1/0/2  
interval 100 owner owner1
```

rmon event

Description

The **rmon event** command is used to configure the entries of SNMP-RMON Event. To return to the default configuration, please use **no rmon event** command. Event Group, as one of the commonly used RMON Groups, is used to define RMON events. Alarms occur when an event is detected.

Syntax

```
rmon event index [ user user-name ] [ description descript ] [ type { none | log  
| notify | log-notify } ] [ owner owner-name ]
```

```
no rmon event index
```

Parameter

index — The index number of the event entry, ranging from 1 to 12. You can only select one entry for each command.

user-name — The name of the User to which the event belongs, ranging from 1 to 16 characters. By default, it is “public”.

descript — The description of the event, ranging from 1 to 16 characters. By default, it is empty.

type — The event type, with none, log, notify and both options. None indicates no processing, log indicates logging the event, notify indicates sending trap messages to the management station, and both indicates logging the event and sending trap messages to the management station.

owner-name — The owner of the event entry, ranging from 1 to 16 characters. By default, it is “monitor”.

Command Mode

Global Configuration Mode

Example

Configure the user name of entry 1, 2, 3 and 4 as user1, the description of the event as description1, the type of event as log and the owner of the event as owner1:

```
TL-SG3424(config)# rmon event 1-4 user user1 description description1
type log owner owner1
```

rmon alarm

Description

The **rmon alarm** command is used to configure SNMP-RMON Alarm Management. To return to the default configuration, please use **no rmon alarm** command. Alarm Group is one of the commonly used RMON Groups. RMON alarm management allows monitoring the specific alarm variables. When the value of a monitored variable exceeds the threshold, an alarm event is generated, which triggers the switch to act in the set way.

Syntax

```
rmon alarm index interface gigabitEthernet port [ alarm-variable { drop | revbyte | revpkt | bpkt | mpkt | crc-lign | undersize | oversize | fragment | jabber | collision | 64 | 65-127 | 128-511 | 512-1023 | 1024-10240 } ] [ s-type { absolute | delta } ] [ rising-threshold r-hold ] [ rising-event-index r-event ] [ falling-threshold
```


f-hold] [**falling-event-index** *f-event*] [**a-type** { rise | fall | all }] [**owner**
owner-name] [**interval** *interval*]

no rmon alarm *index*

Parameter

index — The index number of the Alarm Management entry, ranging from 1 to 12, in the format of 1-3,5.

port — The Ethernet port number.

alarm-variable — The alarm variable. By default, the option is “drop”.

s-type — Sample Type, which is the sampling method for the selected variable and comparing the value against the thresholds. There are two options, absolute and delta. Absolute indicates comparing the values directly with the thresholds at the end of the sampling interval. Delta indicates subtracting the last sampled value from the current value, and then comparing the difference in the values with the threshold. By default, the Sample Type is “absolute”.

r-hold — The rising counter value that triggers the Rising Threshold alarm, ranging from 1 to 65535. By default, it is 100.

r-event — Rise Event, which is the index of the corresponding event which will be triggered if the sampled value is larger than the Rising Threshold. It ranges from 1 to 12.

f-hold — The falling counter value that triggers the Falling Threshold alarm, ranging from 1 to 65535. By default, it is 100.

f-event — Fall Event, which is the index of the corresponding event which will be triggered if the sampled value is lower than the Falling Threshold. It ranges from 1 to 12.

a-type — Alarm Type, with rise, fall and all options. Rise indicates that the alarm event will be triggered when the sampled value exceeds the Rising Threshold, fall indicates that the alarm event will be triggered when the sampled value is under the Falling Threshold, and all indicates that the alarm event will be triggered either the sampled value exceeds the Rising Threshold or is under the Falling Threshold. By default, the Alarm Type is “all”.

owner-name — The owner of the entry, ranging from 1 to 16 characters. By default, it is “monitor”.

interval — The alarm interval time, ranging from 10 to 3600 in seconds. By default, it is 1800.

Command Mode

Global Configuration Mode

Example

Configure the port of entries of 1,2 and 3 as port 2, the owners as owner1 and the alarm intervals as 100 seconds

```
TL-SG3424(config)# rmon alarm 1-3 interface gigabitEthernet 1/0/2 owner  
owner1 interval 100
```

show snmp-server

Description

The **show snmp-server** command is used to display SNMP configuration globally.

Syntax

```
show snmp-server
```

Command Mode

Privileged EXEC Mode and Any Configuration Mode

Example

Display SNMP configuration globally:

```
TL-SG3424# show snmp-server
```

show snmp-server view

Description

The **show snmp-server view** command is used to display the View table.

Syntax

```
show snmp-server view
```

Command Mode

Privileged EXEC Mode and Any Configuration Mode

Example

Display the View table:

```
TL-SG3424# show snmp-server view
```

show snmp-server group

Description

The **show snmp-server group** command is used to display the Group table.

Syntax

```
show snmp-server group
```

Command Mode

Privileged EXEC Mode and Any Configuration Mode

Example

Display the Group table:

```
TL-SG3424# show snmp-server group
```

show snmp-server user

Description

The **show snmp-server user** command is used to display the User table.

Syntax

```
show snmp-server user
```

Command Mode

Privileged EXEC Mode and Any Configuration Mode

Example

Display the User table:

```
TL-SG3424# show snmp-server user
```

show snmp-server community

Description

The **show snmp-server community** command is used to display the Community table.

Syntax

```
show snmp-server community
```

Command Mode

Privileged EXEC Mode and Any Configuration Mode

Example

Display the Community table:

```
TL-SG3424# show snmp-server community
```

show snmp-server host

Description

The **show snmp-server host** command is used to display the Host table.

Syntax

```
show snmp-server host
```

Command Mode

Privileged EXEC Mode and Any Configuration Mode

Example

Display the Host table:

```
TL-SG3424# show snmp-server host
```

show snmp-server engineID

Description

The **show snmp-server engineID** command is used to display the engineID of the SNMP.

Syntax

```
show snmp-server engineID
```

Command Mode

Privileged EXEC Mode and Any Configuration Mode

Example

Display the engineID:

```
TL-SG3424# show snmp-server engineID
```

show rmon history

Description

The **show rmon history** command is used to display the configuration of the history sample entry.

Syntax

```
show rmon history [ index ]
```

Parameter

index — The index number of the entry selected to display the configuration, ranging from 1 to 12, in the format of 1-3, 5. You can select more than one entry

for each command. By default, the configuration of all history sample entries is displayed.

Command Mode

Privileged EXEC Mode and Any Configuration Mode

Example

Display the configuration of all history sample entries:

```
TL-SG3424# show rmon history
```

show rmon event

Description

The **show rmon event** command is used to display the configuration of SNMP-RMON Event.

Syntax

```
show rmon event [ index ]
```

Parameter

index — The index number of the entry selected to display the configuration, ranging from 1 to 12, in the format of 1-3, 5. You can select more than one entry for each command. By default, the configuration of all SNMP-RMON enabled entries is displayed.

Command Mode

Privileged EXEC Mode and Any Configuration Mode

Example

Display the Event configuration of entry1-4:

```
TL-SG3424# show rmon event 1-4
```

show rmon alarm

Description

The **show rmon alarm** command is used to display the configuration of the Alarm Management entry.

Syntax

```
show rmon alarm [ index ]
```

Parameter

index — The index number of the entry selected to display the configuration, ranging from 1 to 12, in the format of 1-3, 5. You can select more than one entry for each command. By default, the configuration of all Alarm Management entries is displayed.

Command Mode

Privileged EXEC Mode and Any Configuration Mode

Example

Display the configuration of the Alarm Management entry 1-2:

```
TL-SG3424# show rmon alarm 1-2
```

Chapter 28 Cluster Commands

Cluster Management function enables a network administrator to manage the scattered devices in the network via a management device. After a commander switch is configured, management and maintenance operations intended for the member devices in a cluster is implemented by the commander device.

cluster ndp

Description

The **cluster ndp** command is used to configure NDP globally. To return to the default configuration, please use **no cluster ndp** command. NDP (Neighbor Discovery Protocol) is used to discover the information of the directly connected neighbor devices to support cluster establishing. An NDP-enabled device sends NDP packets regularly to neighbor devices as well as receives NDP packets from neighbor devices. An NDP packet carries the aging time, which indicates the period of the receiving devices to keep the NDP packet.

Syntax

```
cluster ndp
```

```
cluster ndp timer {[ hello hello-time] [aging aging-time] }
```

```
no cluster ndp
```

```
no cluster ndp timer {[ hello hello-time ] [ aging aging-time ] }
```

Parameter

hello-time — Hello Time, which is the interval to send NDP packets. Hello Time ranges from 5 to 254 in seconds. By default, it is 60.

aging-time — Aging Time, which is the period for the neighbor switch to keep the NDP packets from this switch. Aging Time ranges from 5 to 255 in seconds. By default, it is 180.

Command Mode

Global Configuration Mode

Example

Enable NDP function globally, and configure Aging Time as 120 seconds, Hello Time as 50 seconds:

```
TL-SG3424(config)# cluster ndp
```

```
TL-SG3424(config)# cluster ndp timer hello 50 aging 120
```

Change Aging Time to 80 seconds:

```
TL-SG3424(config)# cluster ndp timer aging 80
```

Change Hello Time to 80 seconds:

```
TL-SG3424(config)# cluster ndp timer hello 80
```

cluster ndp

Description

The **cluster ndp** command is used to configure NTDP globally. To return to the default configuration, please use **no cluster ndp** command. NTDP (Neighbor Topology Discovery Protocol) is used to collect the NDP information and neighboring connection information of each device in a specific network range. It provides the commander switch with the information of devices which can join the cluster and collects topology information of devices within the specified hops.

Syntax

```
cluster ndp
```

```
cluster ndp timer {[ interval-time time ] [ hop-delay value ] [ port-delay value ]}
```

```
cluster ndp hop hop-value
```

```
no cluster ndp
```

```
no cluster ndp timer {[ interval-time time ] [ hop-delay value ] [ port-delay value ]}
```

```
no cluster ndp hop hop-value
```

Parameter

time — NTDP Interval Time, which is the interval to collect topology information. NTDP Interval Time ranges from 1 to 60 in minutes. By default, it is 1.

hop-delay value — NTDP Hop Delay, which is the time between the switch receiving NTDP request packets and the switch forwarding NTDP request packets for the first time. NTDP Hop Delay ranges from 1 to 1000 in milliseconds. By default, it is 200.

port-delay value — NTDP Port Delay, which is the time between the port forwarding NTDP request packets and its adjacent port forwarding NTDP request packets over. NTDP Port Delay ranges from 1 to 100 in milliseconds. By default, it is 20.

hop-value —— NTDP Hops, which is the hop count the switch topology collects. NTDP Hops ranges from 1 to 16. By default, it is 3.

Command Mode

Global Configuration Mode

Example

Enable NTDP function globally, and specify NTDP Hops as 5, NTDP Interval Time as 30 minutes:

```
TL-SG3424(config)# cluster ntdp
TL-SG3424(config)# cluster ntdp timer interval-timer 30
TL-SG3424(config)# cluster ntdp hop 5
```

cluster explore

Description

The **cluster explore** command is used to manually collect the topology information.

Syntax

```
cluster explore
```

Command Mode

Global Configuration Mode

Example

Enable the topology information collecting function manually:

```
TL-SG3424(config)# cluster explore
```

cluster

Description

The **cluster** command is used to configure cluster function for specified ports. To return to the default configuration, please use **no cluster** command.

Syntax

```
cluster [ ndp { disable | enable } ] [ ntdp { disable | enable } ]
no cluster
```

Parameter

ndp —— Enable/ Disable NDP function for the port. By default, it is enabled.

ntdp — Enable/ Disable NTDP function for the port. By default, it is enabled.

Command Mode

Interface Configuration Mode (interface gigabitEthernet / interface range gigabitEthernet)

Example

Enable NDP and NTDP function for port 5:

```
TL-SG3424(config)# interface gigabitEthernet 1/0/5
TL-SG3424(config-if)# cluster ndp enable ntdp enable
```

cluster candidate

Description

The **cluster candidate** command is used to specify the current switch as candidate switch.

Syntax

```
cluster candidate
```

Command Mode

Global Configuration Mode

Example

Specify the current switch as candidate switch:

```
TL-SG3424(config)# cluster candidate
```

cluster individual

Description

The **cluster individual** command is used to specify the current switch as individual switch.

Syntax

```
cluster individual
```

Command Mode

Global Configuration Mode

Example

Specify the current switch as individual switch:

```
TL-SG3424(config)# cluster individual
```

show cluster ndp

Description

The **show cluster ndp** command is used to display NDP configuration of certain ports.

Syntax

```
show cluster ndp [interface [ gigabitEthernet port ]]
```

Parameter

port — The Ethernet port number.

Command Mode

Privileged EXEC Mode and Any Configuration Mode

Example

Display the NDP global configuration:

```
TL-SG3424# show cluster ndp
```

Display the NDP configuration of all Ethernet ports:

```
TL-SG3424# show cluster ndp interface
```

Display the NDP configuration of port 2:

```
TL-SG3424# show cluster ndp interface gigabitEthernet 1/0/2
```

show cluster ntdp

Description

The **show cluster ntdp** command is used to display NTDP configuration or the information of device collected through NTDP.

Syntax

```
show cluster ntdp [ interface gigabitEthernet port | device-list ]
```

Parameter

port — The Ethernet port number.

Command Mode

Privileged EXEC Mode and Any Configuration Mode

Example

Display the NTDP configuration globally:

```
TL-SG3424# show cluster ntdp
```

Display the NTDP configuration of port 2:

```
TL-SG3424# show cluster ntdp interface gigabitEthernet 1/0/2
```

Display the information of device collected through NTDP:

```
TL-SG3424# show cluster ntdp device-list
```

show cluster neighbour

Description

The **show cluster neighbour** command is used to display the cluster neighbor information.

Syntax

```
show cluster neighbour
```

Command Mode

Privileged EXEC Mode and Any Configuration Mode

Example

Display the cluster neighbor information:

```
TL-SG3424# show cluster neighbour
```

show cluster manage role

Description

The **show cluster manage role** command is used to display the cluster role of the current switch.

Syntax

```
show cluster manage role
```

Command Mode

Privileged EXEC Mode and Any Configuration Mode

Example

Display the role of the current switch:

```
TL-SG3424(config)# show cluster manage role
```