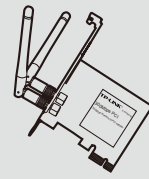


Quick Installation Guide

300Mbps Wireless N PCI Express Adapter

MODEL NO. TL-WN881ND

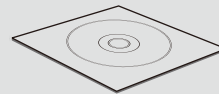
Package Contents



TL-WN881N



QIG

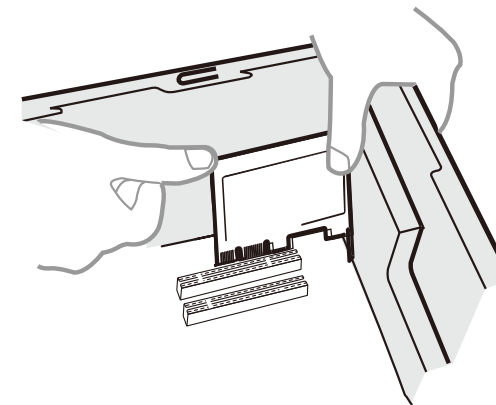


Resource CD

System Requirement

· Windows XP · Windows Vista · Windows 7 · Windows 8

1 Hardware Connection



Steps:

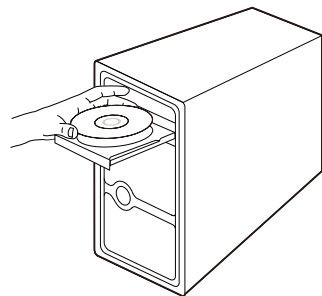
1. Turn off your computer and unplug the power cord from the computer.
2. Open the case. Locate an available PCI Express slot and remove its slot cover. Keep the screw.
3. Insert the adapter into the PCI Express slot as shown above.
4. Secure the adapter with the screw removed in Step 2.
5. Close the case and insert the power cord back into the computer.
6. Turn on your computer.

You may see the **Found New Hardware Wizard** after the adapter has been inserted. Please click **Cancel**.



2 Software Installation (The installation procedures in Windows XP/ Vista/ 7/ 8 are similar. Here takes the procedures in Windows 7 for example.)

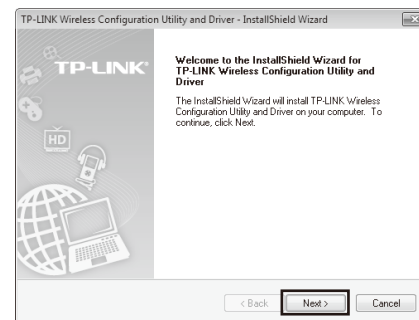
- 1 Insert the TP-LINK Resource CD into the CD-ROM drive.



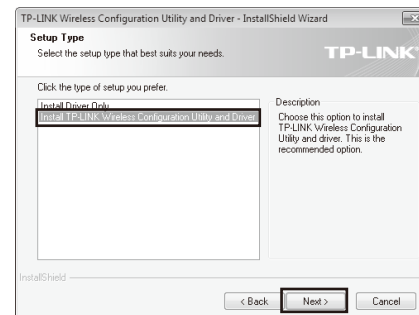
- 2 Find the model TL-WN881ND and select **Install Driver&Utility**.



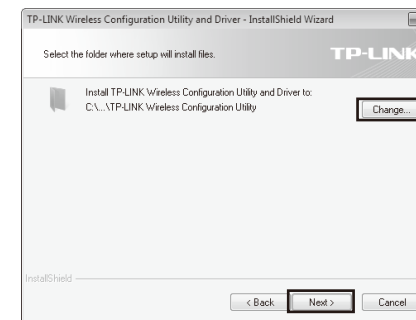
- 3 The **InstallShield Wizard** window will appear. Click **Next** to continue.



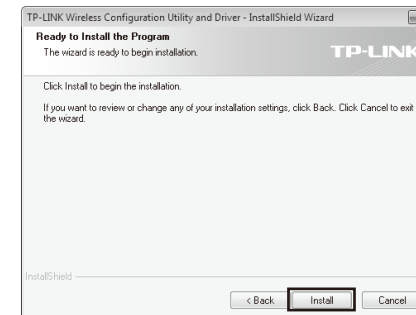
- 4 Select **Install TP-LINK Wireless Configuration Utility and Driver** and then click **Next**.



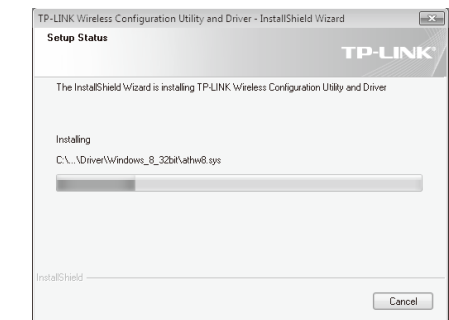
- 5 Click **Change** to specify the destination location or you can leave it default. Click **Next** to continue.



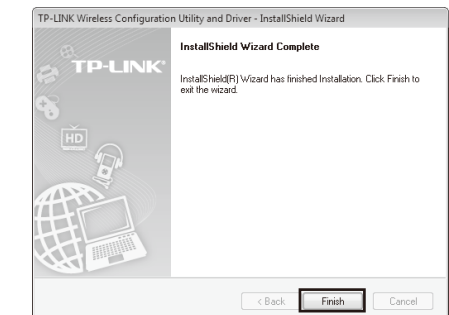
- 6 Click **Install** to install the driver and utility for your adapter.



- 7 The installation process may take 1~2 minutes.

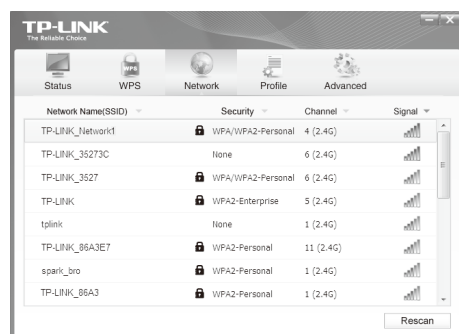



- 8 The following screen will then appear. Click **Finish** to complete the setup.



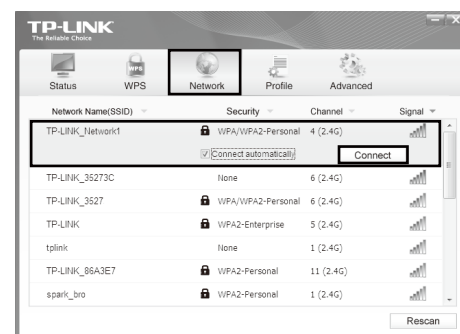
3 Connect to Network (You can skip to **Appendix: Connect to Wireless Router by WPS** to quickly connect to a network if your Wireless Router or Access Point features WPS or QSS function.)

1 After installation, the configuration page will pop up on your desktop.



Note The icon  will appear on your desktop. Double-clicking on the icon can start the utility.

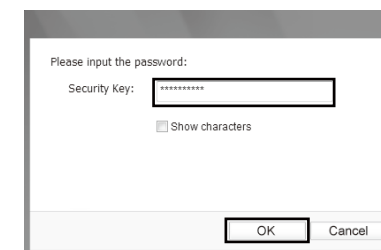
2 Click **Network** in the tools section to display a list of available wireless networks. Highlight the target network name (e.g. TP-LINK_Network1) and then click **Connect** to build a connection.



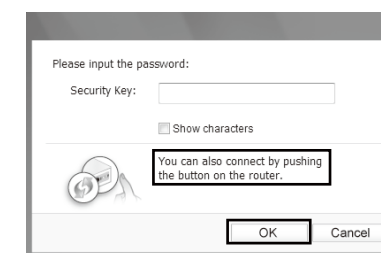
Note Here we only choose a wireless network with the security type of **WPA/WPA2-Personal** as an example to elaborate the following steps. If you want to know more about the connection to a wireless network with the security type of **WPA/WPA2-Enterprise**, please refer to the User Guide on the resource CD included.

3 If the network is unsecured, you will directly connect to it. If it is secured (with WPA/WPA2-Personal), there are two ways to connect to it.

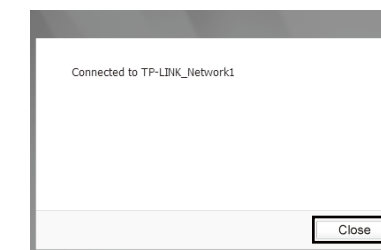
Method One:
Input the password into the **Security Key** field and then click **OK** to continue.



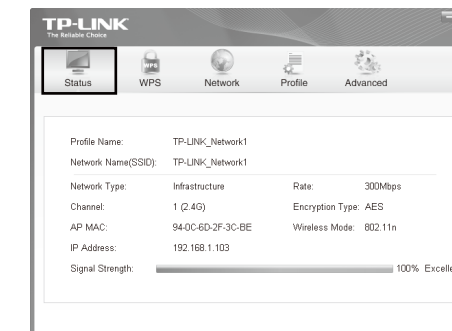
Method Two:
Without entering a key, push the WPS or QSS button on your Router as hinted "You can also connect by pushing the button on the router". Then click **OK** to continue.



4 The following screen indicates successful connectivity. Click **Close** to enjoy the Internet.



5 To view more information about the network connected, click **Status** in the tools section.

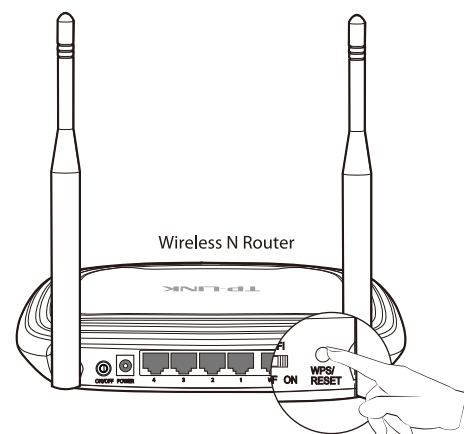


Appendix: Connect to Wireless Router by WPS

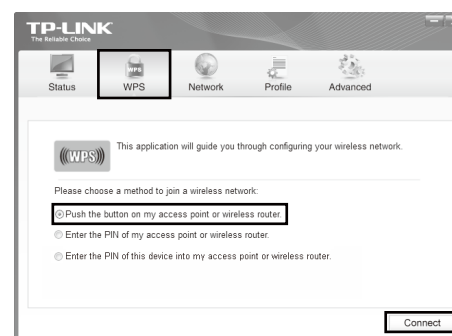
If your wireless Router features the WPS or QSS function, you can also set up a wireless connection in this way.

Note For more configuration methods of WPS, please refer to the User Guide on the Resource CD.

1 Push the **WPS/RESET** button for 2~3 seconds on the Router. (Here takes Router TL-WR841ND for example.)

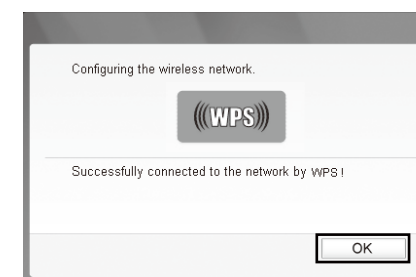


2 Launch the configuration utility and click **WPS** in the tools section. Select **Push the button on my access point or wireless router** and then click **Connect**.



Note The third option "Enter the PIN of this device into my access point or wireless router" is only available in OS Windows XP and Window Vista, but not in Windows 7/8.

3 Wait for the connection process to complete. The following screen indicates successful connectivity. Click **OK** to finish the WPS connection.



Technical Support

- For more troubleshooting help, go to <http://www.tp-link.com/en/support/faq>
- To download the latest Firmware, Driver, Utility and User Guide, go to <http://www.tp-link.com/en/support/download>
- For all other technical support, please contact us by using the following details:

<p>Global Tel: +86 755 2650 4400 E-mail: support@tp-link.com Service time: 24hrs, 7 days a week</p> <p>UK Tel: +44 (0) 845 147 0017 E-mail: support.uk@tp-link.com Service time: 24hrs, 7 days a week</p> <p>Turkey Tel: 0850 7244 488 (Turkish Service) E-mail: support.tr@tp-link.com Service time: 09:00 to 21:00, 7 days a week</p> <p>Ukraine Tel: 0800 505 508 E-mail: support.ua@tp-link.com Service time: Monday to Friday 10:00 to 22:00</p> <p>Brazil Tel: +55 (0) 800 608 9799 (Portuguese Service) E-mail: suporte.br@tp-link.com Service time: Monday to Friday, 09:00 to 20:00; Saturday, 09:00 to 15:00</p> <p>Indonesia Tel: (+62) 021 6386 1936 E-mail: support.id@tp-link.com Service time: Monday to Friday 09:00 to 18:00</p> <p>Australia/New Zealand Tel: AU 1300 87 5465 NZ 0800 87 5465 E-mail: support.au@tp-link.com (Australia) support.nz@tp-link.com (New Zealand) Service time: 24hrs, 7 days a week</p> <p>Germany/Austria Tel: +49 1805 875 465 (German Service) +49 1805 TPLINK +43 820 820 360 E-mail: support.de@tp-link.com Fee: 0.14 EUR/min from the German fixed phone network and up to 0.42EUR/min from mobile phone. Service Time: Monday to Friday, 09:00 to 12:30 and 13:30 to 17:30. GMT+1 or GMT+2 (Daylight Saving Time in Germany) * Except bank holidays in Hesse</p>	<p>Singapore Tel: +65 6284 0493 E-mail: support.sg@tp-link.com Service time: 24hrs, 7 days a week</p> <p>USA/Canada Toll Free: +1 866 225 8139 E-mail: support.usa@tp-link.com Service time: 24hrs, 7 days a week</p> <p>Italy Tel: +39 023 051 9020 E-mail: support.it@tp-link.com Service time: Monday to Friday, 09:00 to 13:00; 14:00 to 18:00</p> <p>Malaysia Tel: 1300 88 875 465 E-mail: support.my@tp-link.com Service time: 24hrs, 7 days a week</p> <p>Poland Tel: +48 (0) 801 080 618 / +48 227 217 563 (if calls from mobile phone) E-mail: support.pl@tp-link.com Service time: Monday to Friday 09:00 to 17:00. GMT+1 or GMT+2 (Daylight Saving Time)</p> <p>France Tel: +33 (0) 820 800 860 (French service) E-mail: support.fr@tp-link.com Fee: 0.118 EUR/min from France Service time: Monday to Friday, 09:00 to 18:00 *Except French Bank holidays</p> <p>Switzerland Tel: +41 (0) 848 800 998 (German Service) E-mail: support.ch@tp-link.com Fee: 4-8 Rp/min, depending on rate of different time Service time: Monday to Friday 09:00 to 12:30 and 13:30 to 17:30. GMT+1 or GMT+2 (Daylight Saving Time)</p> <p>Russian Federation Tel: 8 (499) 754 5560 8 (800) 250 5560 (toll-free call from any RF region) E-mail: support.ru@tp-link.com Service time: From 10:00 to 18:00 (Moscow time) * Except weekends and holidays in Russian Federation</p>
--	---