

EDUCATION SOLUTION BACKGROUND

In modern educational institutions, wireless connectivity is as essential as a pen and paper. Reliable, secure and convenient Wi-Fi provides students with unlimited access to information to enrich their education. It also allows teachers to access a wider variety of resources that promote more effective learning and development.

REQUIREMENTS

- Wired & wireless network access to students & teachers
- Remote access to educational resources
- Authority level for sensitive information
- Secure campus environment
- Simple management and low-cost maintenance

BENEFITS

Comprehensive wireless coverage

Access Point (AP) designs include ceiling, wall and pole-mount installation for the classroom, dormitory, library, outdoor areas and more.

VPN routers for remote access

IPSec/PPTP/L2TP network protocols allow off-campus students and teachers to access the intranet anytime, anywhere through the VPN router.

Centralized management

The free, easy-to-use Controller Software and the secure, stable Wireless Controller allow network administrators to easily configure and monitor hundreds of APs.

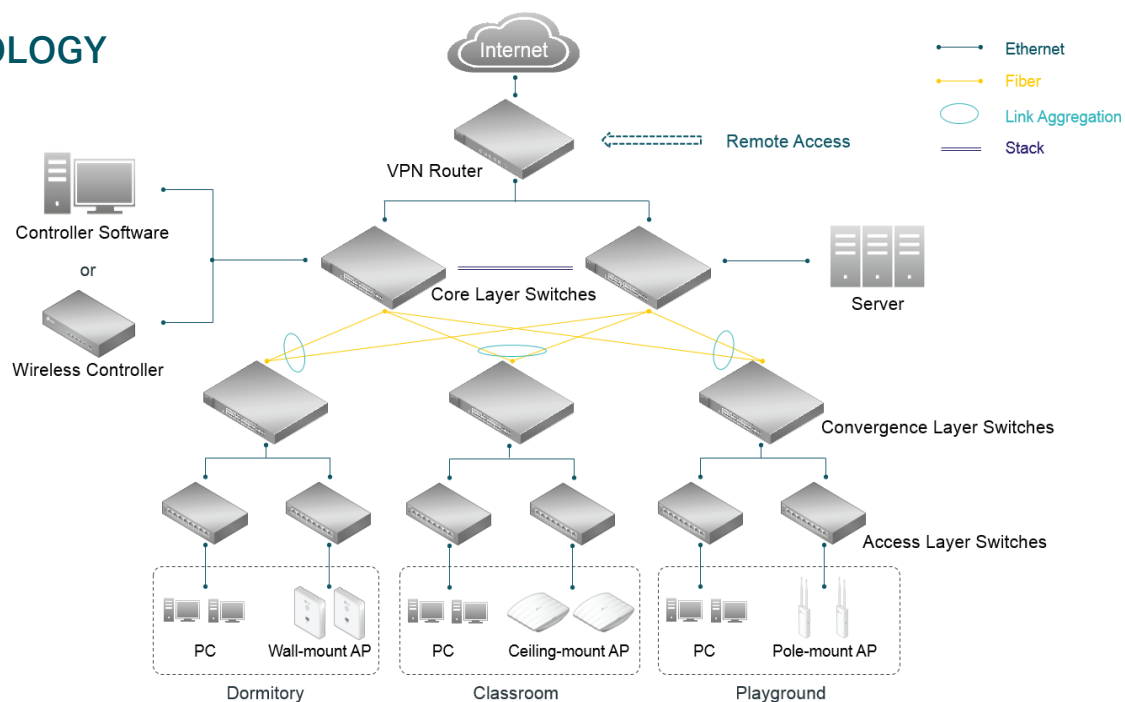
Keeps the campus network in order

Access Control and MAC Filtering define white and black lists of internet resources, while Wireless Isolation controls client communication, maintaining a healthy campus network.

Protects the network from threats

TP-Link switches feature IP-MAC-Port-VLAN Binding, 802.1X Authentication, ARP Inspection and IP Source Guard to safeguard a campus network's various files and sensitive information.

TOPOLOGY



RECOMMENDED PRODUCTS

Type	Model	Description	
Router	TL-ER6120	SafeStream Gigabit Dual-WAN VPN Router	
Core Switch	T3700G-28TQ	JetStream 28-Port Gigabit Stackable L3 Managed Switch	
Convergence Switch	T2600G-28TS	JetStream 24-Port Gigabit L2 Managed Switch with 4 SFP Slots	
Access Switch	TL-SG1024	24-Port Gigabit Rackmount Switch	
	TL-SG1008P	8-Port Gigabit Desktop Switch with 4-Port PoE	
Software-Managed Access Point	Controller Software	Free EAP Controller Software	
	EAP330	AC1900	Dual-Band Gigabit Ceiling Mount Access Point
	EAP320	AC1200	
	EAP245	AC1750	
	EAP225	AC1200	
	EAP115-Wall	300 Mbps Wall-Plate Access Point	
	EAP110-Outdoor	300 Mbps Outdoor Access Point	
Hardware-Managed Access Point	Wireless Controller AC500	Wireless Controller that can manage up to 500 CAPs	
	CAP1750	AC1750 Dual-Band Gigabit Ceiling Mount Access Point	
	CAP300	300 Mbps Ceiling Mount Access Point	
	CAP300-Wall	300 Mbps Wall-Plate Access Point	
	CAP300-Outdoor	300 Mbps Outdoor Access Point	

TP-LINK PROVIDES WIRELESS COVERAGE TO HABITAT AJMAN SCHOOL IN AJMAN, UAE



Sebastian, Director of Technology at the school needed to think about when scoping his technology budget. A reliable WiFi connection for students and teachers had become as vital as electricity, it was the utility needed to power their everyday learning experience.

SOLUTION

To address these challenges and provide a robust WiFi solution for the students and educators at Habitat School in Ajman, the TP-Link implementation team recommended to Clint Sebastian, Director of Technology to perform and evaluation of the it EAP 330 wireless access points. The primary goals he looked to achieve were to gain throughput, create a more balanced, secure network and have a WLAN controller (EAP controller) which could be used to configure, manage and Monitor. With an added focus on network security, Sebastian wanted to make sure he chose the best in rogue detection and locating devices on the network. After evaluating between Ubiquity and TP-Link, Sebastian decided that while the features between both vendors were similar, TP-Link EAP offered the best performance, reliability and security, all at a lower cost than the competition.



EAP 330 (Source: TP-Link)

The primary goals he looked to achieve were to gain throughput, create a more balanced, secure network and have a WLAN controller (EAP controller) which could be used to configure, manage and Monitor. With an added focus on network security, Jeff wanted to make sure he chose the best in rogue detection and locating devices on the network. After evaluating between Ubiquity and TP-Link, client decided that while the features between both vendors were similar, TP-Link EAP offered the best performance, reliability and security, all at a lower cost than the competition.

BUSINESS RESULTS

Habitat Ajman schools has fulfilled its objectives of ensuring the technological literacy of students at all levels is enabled by offering the best performance network that's reliable and secure for students and teachers. The TP-Link EAP solution provides the school district with the technology, performance, flexibility, and cost-effectiveness needed to ensure the goals of online education are not just met, but exceeded.

Customer Profile

Customer Name: Habitat
Capacity: 1000
Industry: Education
Location: Ajman, UAE
Year of Project: 2017

BACKGROUND

Habitat School in the emirate of Ajman in the UAE is a learning institution that attempts to introduce a new model of schooling by merging the possibilities of space, pedagogy and technology, meant primarily for the expatriate community. The school aims to address the challenges in schooling with regard to curriculum and learning technologies from the point of view of the needs of the expatriate community. The goal is to have a model of teaching and learning where gathering of knowledge and development of personality happens in a planned environment.

CHALLENGE

When much of the curriculum is based online, and 1000 district devices are connecting to the Habitat School IT network, there are certain considerations for which Clint