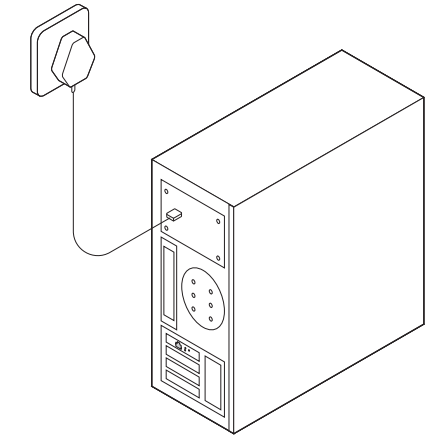
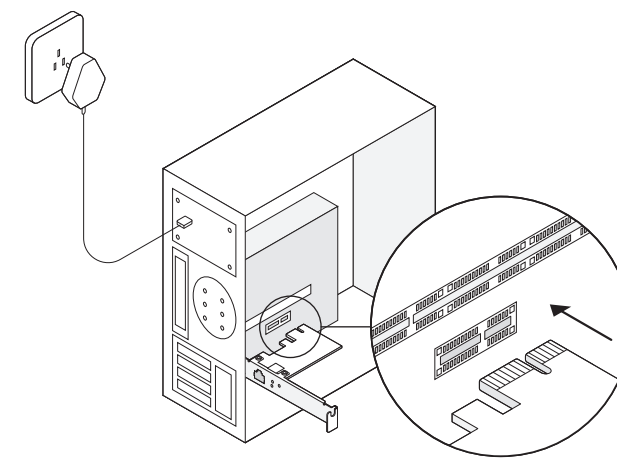
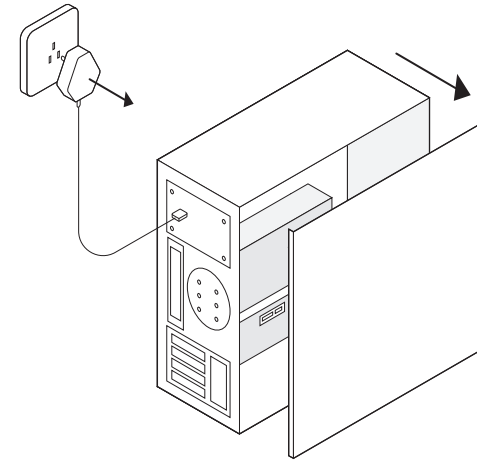


1 Hardware Connection

a. Turn off your computer, unplug the power cable and remove the case panel.

b. Locate an available PCI-E slot and carefully insert the adapter.

c. Replace the case panel, plug in the power cable and turn on your computer.



Quick Installation Guide

Gigabit PCI Express Network Adapter

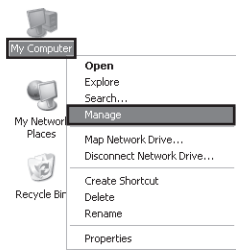
Images are for demonstration only.

Note: In Windows XP and Windows Vista, you may see the **Found New Hardware Wizard** window when the adapter is plugged. Please click **Cancel**.

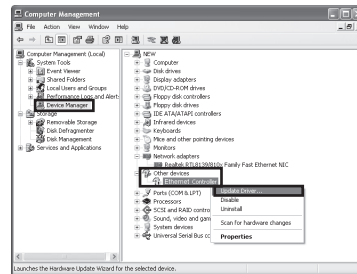
2 Software Installation

For Windows XP

1 Insert the CD into the CD-ROM drive. Then right-click **My Computer** and click **Manage**.



2 Open **Device Manager**. Go to **Other Devices**, right-click **Ethernet Controller**, and then click **Update Driver...**



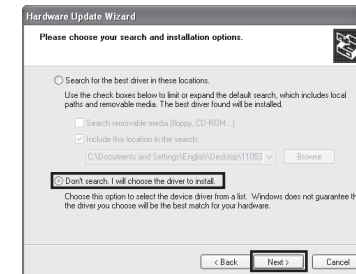
3 Select **No, not this time**, and then click **Next**.



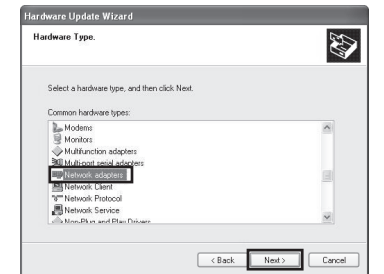
4 Select **Install from a list or specific location [Advanced]**, and click **Next**.



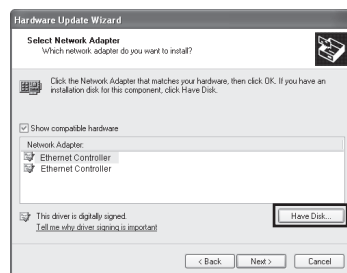
5 Select **Don't Search. I will choose the driver to install**, and click **Next**.



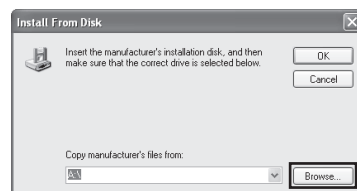
6 Choose **Network adapters** from the drop-down list, and then click **Next**.



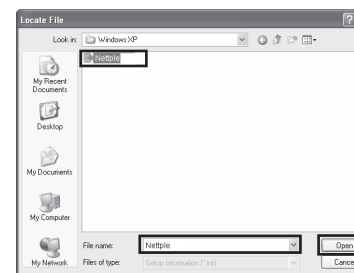
7 Click **Have Disk...**



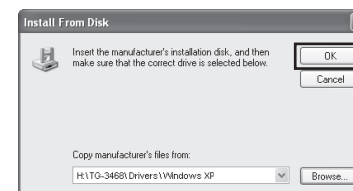
8 Click **Browse...**



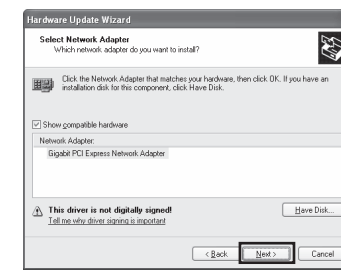
9 Go to **My computer > CDXXX(H:) > TG-3468 > Drivers > Windows XP**, choose the **.inf** file, and then click **Open**.



10 Click **OK**.

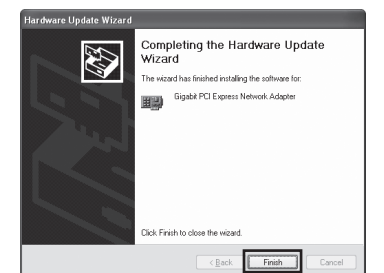


11 Click **Next**.



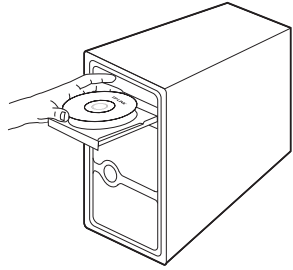
If prompted to **The software has not passed Windows Logo testing to verify its compatibility with Windows XP**, click **Continue Anyway** to continue.

12 Click **Finish** to complete the installation.

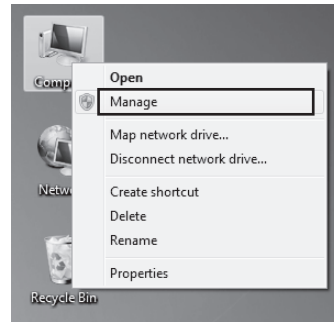


For Other Windows Systems

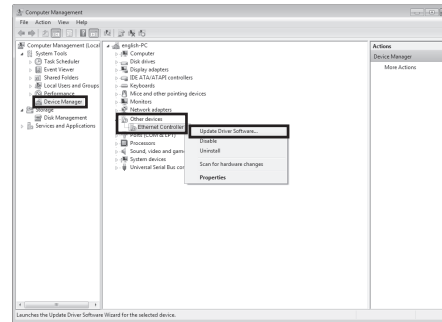
1 Insert the CD into the CD-ROM drive.



2 Right-click **Computer**, and then click **Manage**.

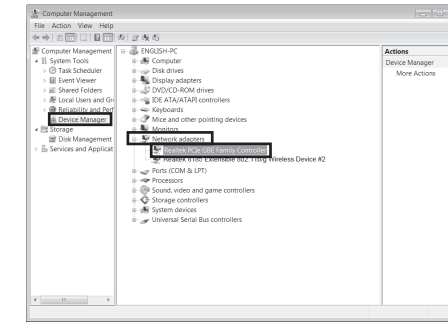


3 Open **Device Manager**. Go to **Other Devices** and right-click **Ethernet Controller**; then click **Update Driver Software...**

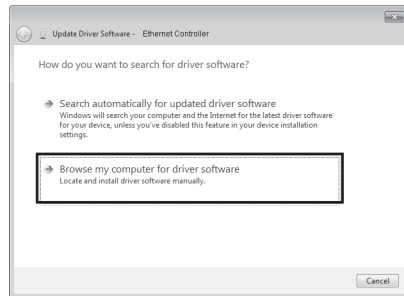


OR

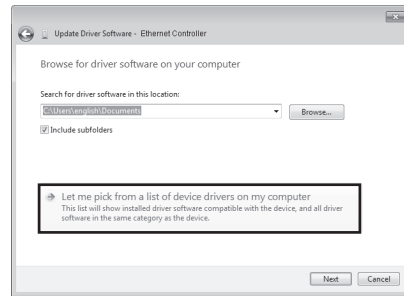
Open **Device Manager**. Go to **Network Adapters**, right-click **Realtek PCIe GBE Family Controller**, and click **Update Driver Software...**



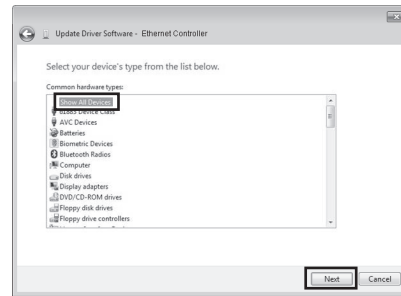
4 Select **Browse my computer for driver software**.



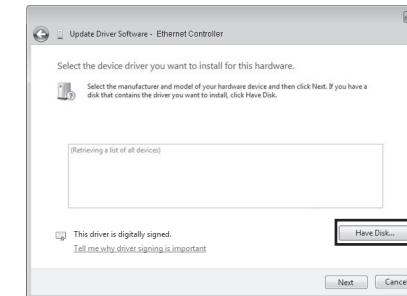
5 Select **Let me pick from a list of device drivers on my computer**.



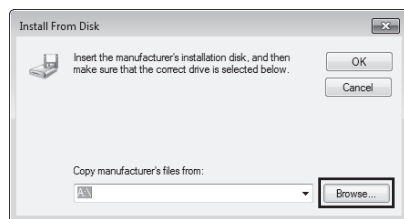
6 For Windows 7/Vista: Choose **Show All Devices**, and then click **Next**.



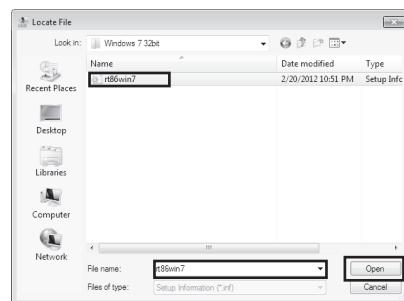
7 Click **Have Disk...**



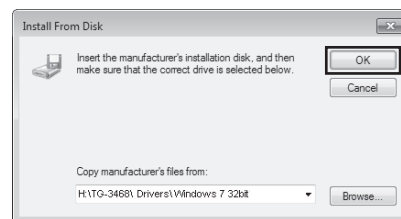
8 Click **Browse...**



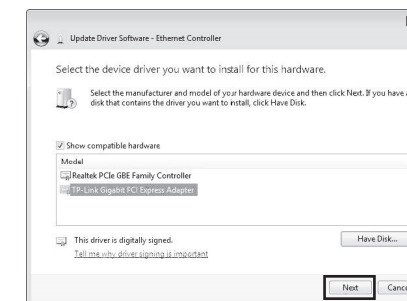
9 Go to **Computer > CDXXX(H:) > TG-3468 > Drivers > Windows X (32bit or 64bit)**, choose the **.inf** file, and then click **Open**.



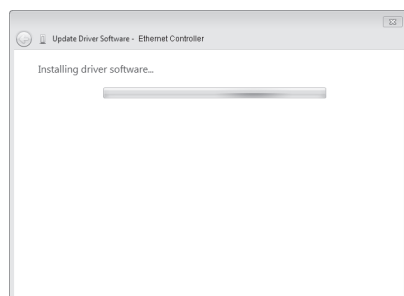
10 Click **OK**.



11 Select **Gigabit PCI Express Network Adapter** (for Windows Vista/8) or **TP-Link Gigabit PCI Express Adapter** (for other systems), and click **Next**.

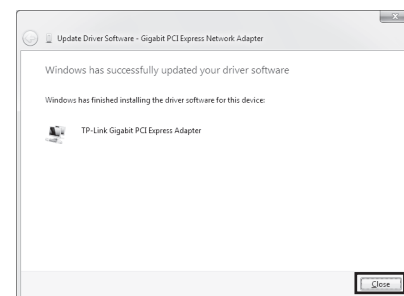


12 Wait a few seconds.



For Windows Vista: If prompted to 'Windows can't verify the publisher of this driver software', click **Install this driver software anyway** to continue.

13 Click **Close** to finish the installation.



FAQ

Q1: How to find the driver if the CD is lost or broken?

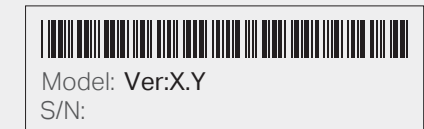
A. You could find and download the driver at <http://www.tp-link.com/download-center>

Q2: What should I do if PC cannot find the new hardware?

- A1. Check if the network adapter is inserted in the PCI Express slot properly.
- A2. Reinsert the adapter or try to change another PCI Express slot.
- A3. If the problem persists, contact our Technical Support.

Q3: How to find the hardware version of the adapter?

- A1. The hardware version (Ver:X.Y) is printed on the product label on the package or the adapter. The number X is the hardware version of the adapter.



- A2. For more detailed instructions, please visit <http://www.tp-link.com/faq-46.html>

Support

For technical support, the user guide and other information, please visit <http://www.tp-link.com/support>, or simply scan the QR code.

