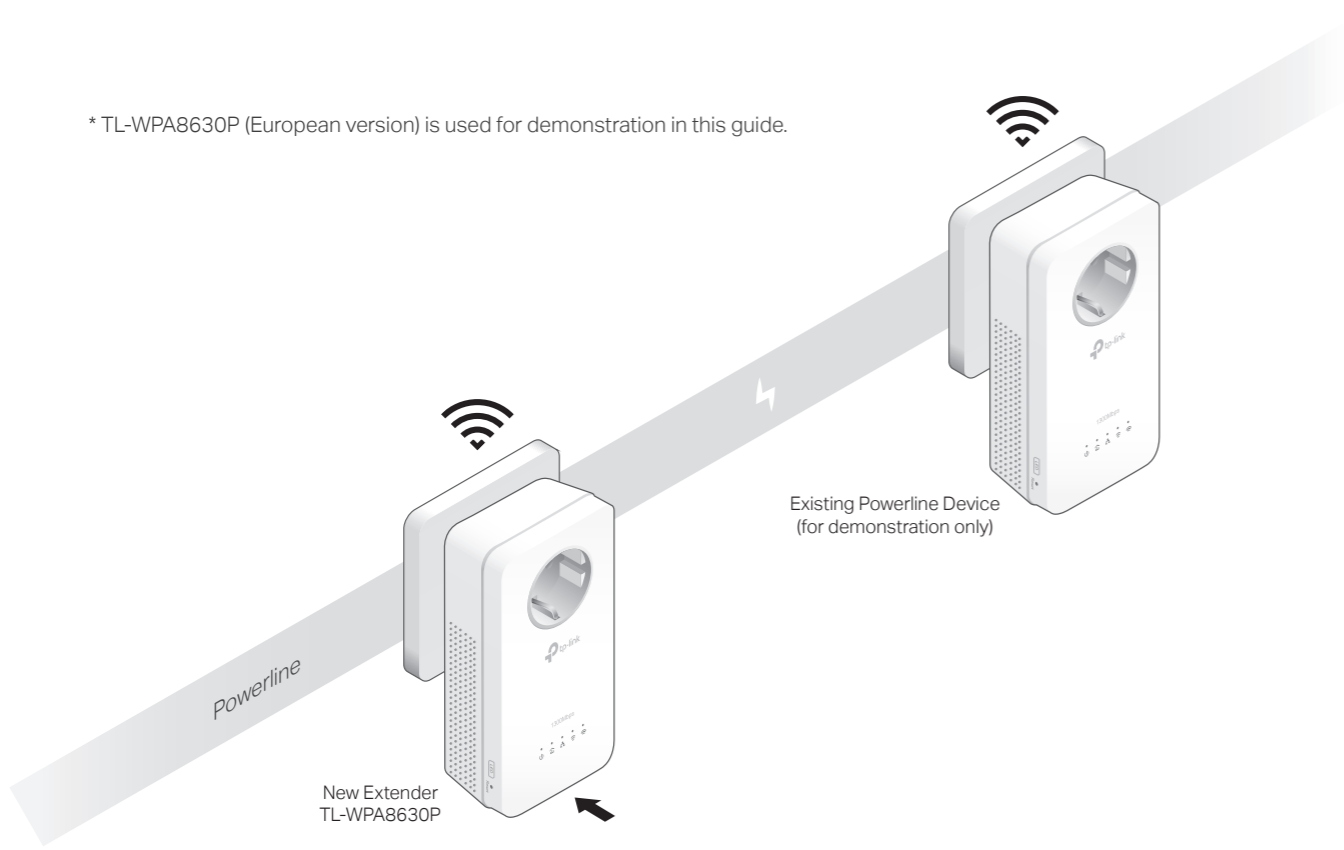


Quick Installation Guide

TL-WPA8630P

* TL-WPA8630P (European version) is used for demonstration in this guide.



1 Plug in the new extender near one of your existing powerline devices.

2 Check the new extender's Powerline LED . Is it on?

Yes > Step 4

No > Step 3

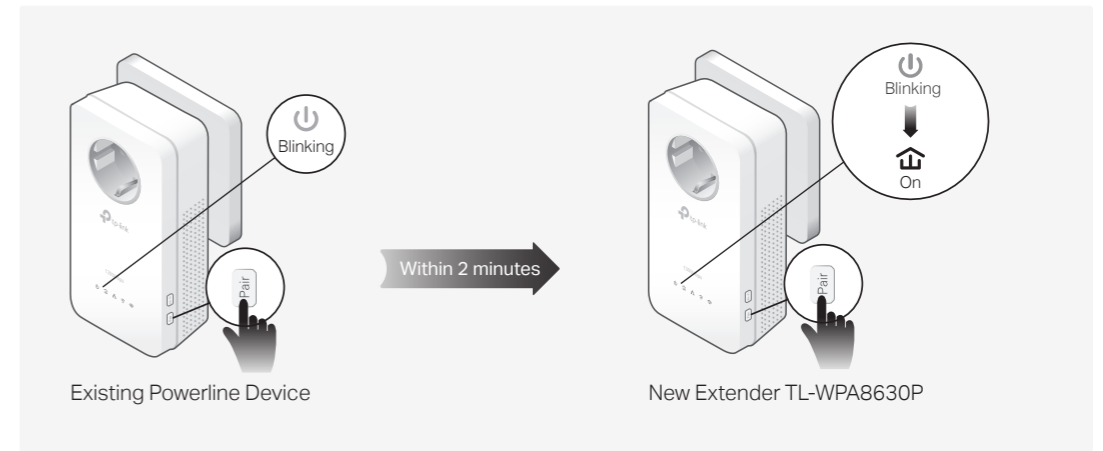
3 Pair the powerline devices.

A Press the Pair button on the existing powerline device for 1 second. The Power LED starts blinking.

Note: If the Power LED does not blink, press the Pair button again.

B Within 2 minutes, press the Pair button on the new extender for 1 second. The Power LED starts blinking.

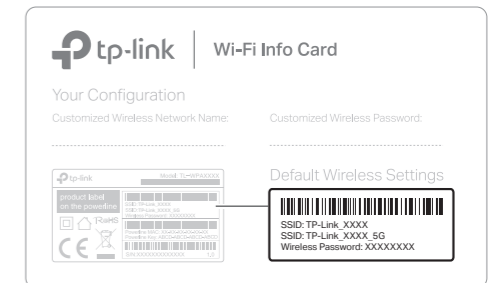
When the Powerline LED on the new extender turns on, the pairing process is complete.



4 Enjoy!

Relocate the extender to the Wi-Fi "dead" zone. Connect your devices to the internet using the default SSID (network name) and password on the Wi-Fi Info Card provided.

Note: If the Powerline LED turns red, it means the signal strength is poor. Try another wall outlet.



If you cannot find this SSID in your Wi-Fi network list, this may mean the Wi-Fi Move feature has automatically copied over the existing wireless settings (see back for more information). In this case, use the SSID and password of your existing powerline network to connect.

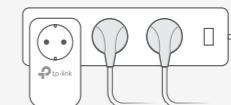
Attention

Plug powerline devices into wall outlets instead of power strips.

Wall Outlet



Power Strip







Unify Wi-Fi Networks via Wi-Fi Auto-Sync

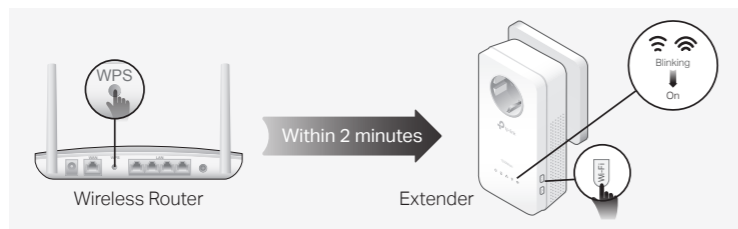
Wi-Fi Auto-Sync enables you to easily create one unified Wi-Fi network throughout your home.

Copy SSID and Password from Your Router via WPS

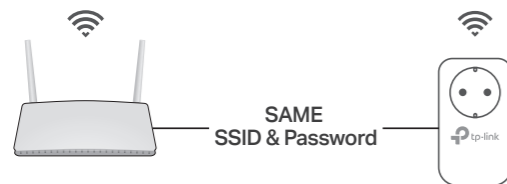
Note: If your router doesn't have a WPS button, manually change the extender's Wi-Fi settings via the tpPLC app, tpPLC Utility, or web interface.

1. Plug in the extender in the same room as your router. Wait until the extender's 2.4GHz and 5GHz Wi-Fi LEDs   turns on.
2. Press your router's WPS button. Within 2 minutes, press the extender's Wi-Fi button for 1 second. The extender's 2.4GHz and 5GHz Wi-Fi LEDs   starts blinking. When it stays on, Wi-Fi settings are copied.

Note: If Wi-Fi settings are not copied within 2 minutes, manually change the extender's Wi-Fi settings.



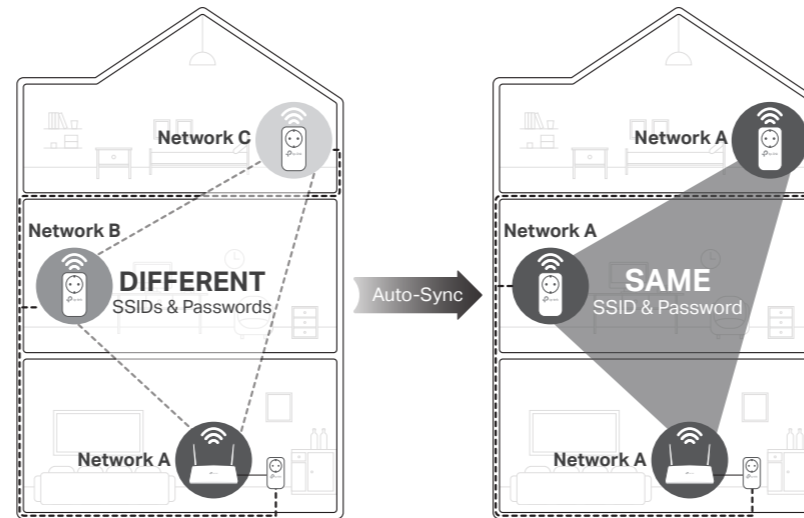
3. Relocate the extender and enjoy the internet using your router's SSID and password.



Auto-Sync Settings to More Extenders via Wi-Fi Move

If you have paired your powerline devices, the Wi-Fi settings will automatically sync from the existing extender to the new one.

Note: For more extender models that support Wi-Fi Auto-Sync, visit <http://www.tp-link.com>.



If you personalize any extender with LED schedules or other Wi-Fi settings (such as Wi-Fi schedules and guest network), the settings will also automatically sync to other extenders in the secured powerline network.

Personalize Your Network

Manage your powerline devices using any of the methods below. You can change the SSID and password, set Wi-Fi schedules, create a guest network and more.

tpPLC App

For easy management via your smartphone or tablet, download the app from the App Store or Google Play, or simply scan the QR code.



Scan to download

tpPLC App

tpPLC Utility

For easy management via your computer, download the utility on the product's Support page at <http://www.tp-link.com>.

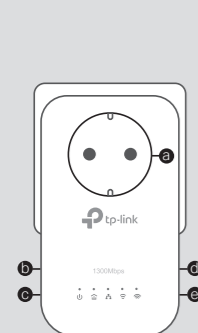
Note: For detailed instructions, refer to the utility manual on the product's Support page.

Web Interface


To access all settings, connect to an extender wirelessly and visit <http://tplinkplc.net>. Use **admin** for both username and password upon initial login.

Note: For detailed instructions, refer to the product manual on the product's Support page.

Button Legend



Extender TL-WPA8630P


- a Integrated Electrical Socket**
Used as a pass-through AC outlet to power other devices. It also reduces some electrical noise that may interfere with powerline performance.
- b LED Button**
Press for 1 second to turn all LEDs on or off.
- c Reset Button**
Press for at least 5 seconds until all LEDs turn off to reset the extender to factory default settings.
- d Wi-Fi Button**
Press for 1 second to begin or stop copying Wi-Fi settings from the router.
Press and hold for about 5 seconds to turn Wi-Fi on or off.
- e Pair Button**
Press for 1 second on two powerline devices within two minutes to pair them.
Press and hold for about 7 seconds until the Powerline LED  is off to leave the current powerline network.

Frequently Asked Questions


Q1. How do I reset my extender to factory default settings?

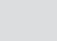
- A. With the extender plugged into an electrical outlet, press and hold the Reset button until all LEDs turn off. When the LEDs turn back on, the reset process is complete.

Q2. What should I do if there is no internet connection in my powerline network?

- A1. Make sure all powerline adapters and extenders are on the same electrical circuit.
- A2. Make sure each device's Powerline LED  is on. If not, pair all devices again.
- A3. Make sure all devices are correctly and securely connected.
- A4. Check if you have an internet connection by connecting the computer directly to the modem or router.

Q3. What should I do if a successfully-paired extender does not reconnect after it is relocated?

- A1. Make sure all powerline adapters and extenders are on the same electrical circuit.
- A2. Pair it again with another Powerline device again, and make sure the Powerline LED  is on before relocating it.
- A3. Check for possible interference due to a washing machine, air conditioner or other household appliance that may be too close to one of the powerline devices. Plug the appliance into the integrated electrical socket to remove the electrical noise if your powerline device has an integrated electrical socket.

 For technical support, the user guide and other information, please visit <http://www.tp-link.com/support>, or simply scan the QR code.



TP-Link hereby declares that the device is in compliance with the essential requirements and other relevant provisions of directives 2014/53/EU, 2009/125/EC and 2011/65/EU. The original EU declaration of conformity may be found at <http://www.tp-link.com/en/ce>.