



450Mbps Wireless N Router

Built to Last with Faster Wi-Fi
and Metallic Exterior

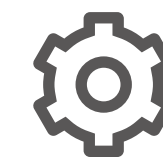
TL-WR945N



450Mbps
Wireless Speed



5dBi Antennas

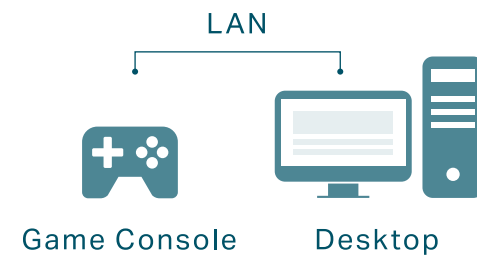


Easy Setup

Highlights

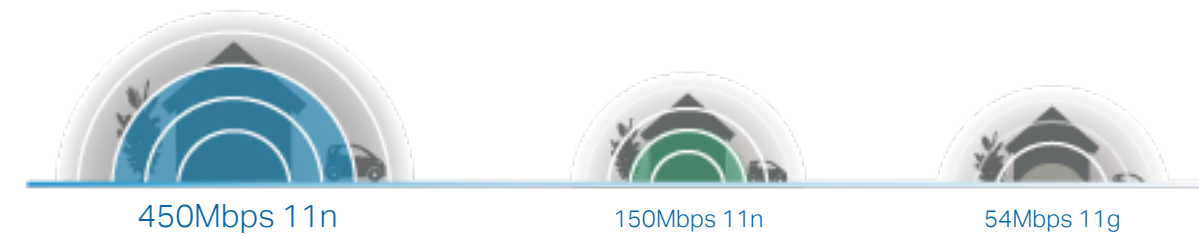
Reliable Wi-Fi to Enjoy

The TL-WR945N creates strong Wi-Fi connections of up to 450Mbps speed for devices throughout your home. Its 3 × 3 MIMO technology strengthens your wireless signal, and four fast Ethernet ports provide strong wired connections for desktops, game consoles, and IPTVs. A steel exterior finish prevents outside interference to create an overall reliable network experience for the home or office.



Wireless N Speed & Range

Complying with the IEEE 802.11n standard, TL-WR945N can establish a wireless network and get up to 15X the speed and 5X the range of conventional 11g products.

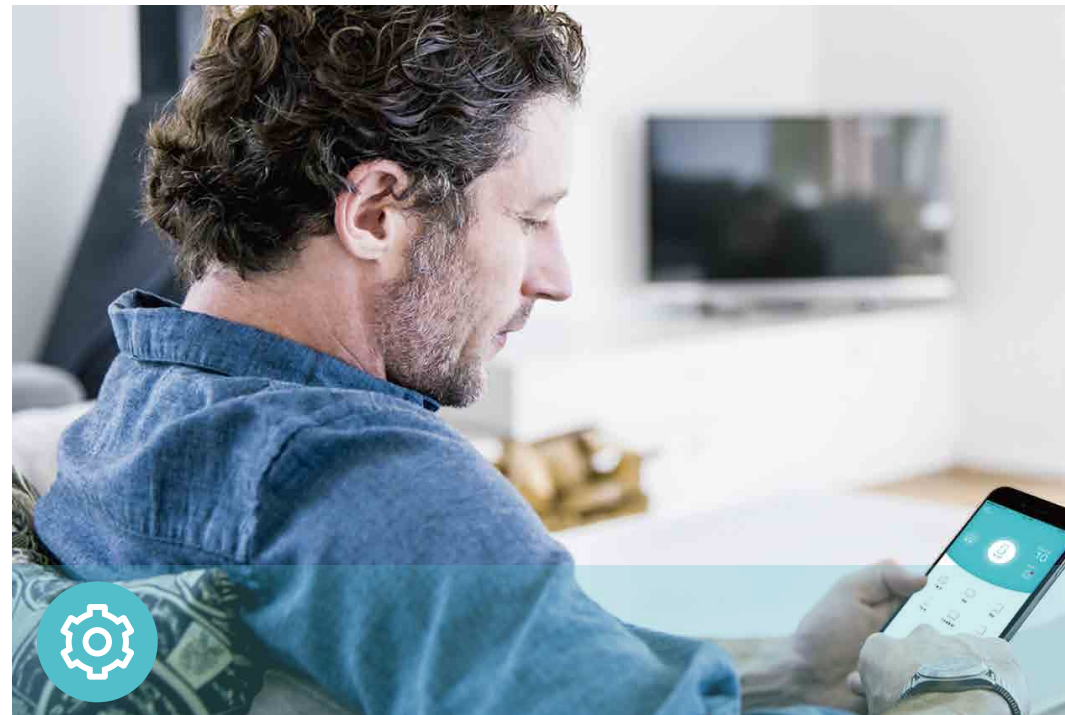


Features



Reliability

- **Wireless N Speed** – 450Mbps Wi-Fi speed meets your daily internet needs
- **802.11 n** – Backward compatible with 802.11 b/g products
- **MIMO Technology** – 3 x 3 MIMO technology improves signal stability
- **Easy Bandwidth Management** – Bandwidth Control allocates necessary speed of each connected device to ensure quality of multimedia streaming



Ease of Use

- **Intuitive Web UI**– Ensures quick and simple installation without hassle
- **Fast Encryption** – One-touch WPA wireless security encryption with the WPS button
- **Wi-Fi On/Off** – Turn On/Off wireless radio using the Wi-Fi button
- **Power On/Off** – Conveniently power on or off your router as required
- **Hassle-free Management with Tether App** – Network management is made easy with the TP-Link Tether App, available on any Android or iOS device



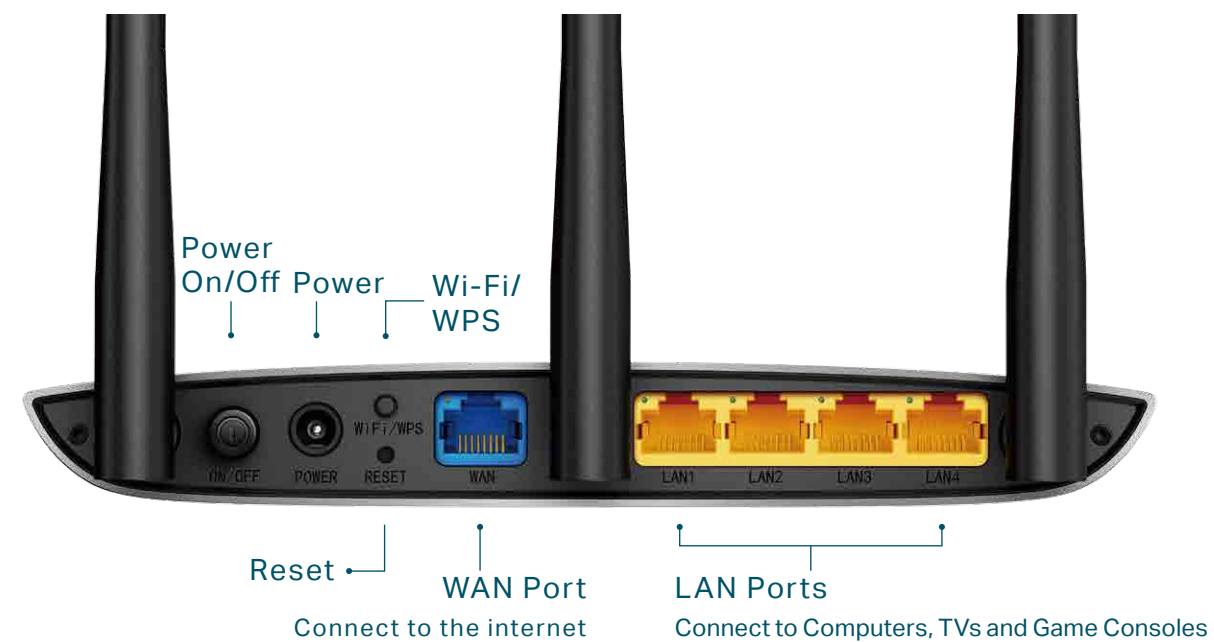
Security

- **Guest Network** – Keep your main network secure by creating a separate network for friends and visitors
- **Access Control** – Establish a whitelist or blacklist to allow or block certain devices from accessing the internet
- **Parental Controls** – Manage when and how connected devices can access the internet
- **Encryptions for Secure Network** – WPA-PSK/WPA2- PSK encryptions provide active protection against security threats

Specifications

Hardware

- Ethernet Ports: 4*10/100Mbps LAN Ports, 1*10/100Mbps WAN Port
- Buttons: Reset Button, Power On/Off Button, Wi-Fi /WPS Button
- Antennas: 3*5dBi fixed Omni Directional Antennas
- External Power Supply: 9VDC / 0.6A
- Dimensions (W x D x H): 7.3 × 4.3 × 0.9 in (185 × 110 × 24 mm)



Wireless

- Wireless Standards: IEEE 802.11n, IEEE 802.11g, IEEE 802.11b
- Frequency: 2.4 ~ 2.4835GHz
- Signal Rate:
 - 11n: Up to 450Mbps(dynamic)
 - 11g: Up to 54Mbps(dynamic)
 - 11b: Up to 11Mbps(dynamic)
- Reception Sensitivity:
 - 270M: -68dBm@10% PER
 - 130M: -68dBm@10% PER
 - 108M: -68dBm@10% PER
 - 54M: -68dBm@10% PER
 - 11M: -85dBm@8% PER
 - 6M: -88dBm@10% PER
 - 1M: -90dBm@8% PER
- Wireless Function: Enable/Disable Wireless Radio, WDS Bridge, WMM, Wireless Statistics
- Wireless Security: WEP, WPA/WPA2, WPA-PSK/WPA-PSK2

Specifications

Software

- WAN Type: Dynamic IP, Static IP, PPPoE, PPTP(Dual Access), L2TP(Dual Access), Bigpond
- DHCP: Server, DHCP Client List, Address Reservation
- Quality of Service: WMM, Bandwidth Control
- Port Forwarding: Virtual Server, Port Triggering, UPnP, DMZ
- Dynamic DNS: DynDns, Comexe, NO-IP
- Access Control: Parental Controls, Local Management Control, Host list, Access Schedule, Rule Management
- Firewall Security: DoS, SPI Firewall, IP and MAC Address Binding
- Protocols: IPv4, IPv6
- Management: Access Control, Local Management, Remote Management
- Guest Network: 2.4GHz guest network

Others

- Certification
CE, RoHS, Wi-Fi
- System Requirements
Microsoft Windows 10/8.1/8/7/Vista/XP/2000/NT/98SE, MAC OS, NetWare, UNIX or Linux
Internet Explorer 11, Firefox 12.0, Chrome 20.0, Safari 4.0, or other Java-enabled browser
Cable or DSL Modem
Subscription with an Internet Service Provider (for internet access)
- Environment
Operating Temperature: 0°C~40°C (32°F ~104°F)
Storage Temperature: -40°C~70°C (-40°F ~158°F)
Operating Humidity: 10%~90% non-condensing
Storage Humidity: 5%~90% non-condensing
- Package Contents
450Mbps Wireless N Router TL-WR945N
Power Adapter
RJ-45 Ethernet Cable
Quick Installation Guide



For more information, please visit

<http://www.tp-link.com/en/products/details/TL-WR945N.html>

or scan the QR code left

Specifications are subject to change without notice. TP-Link is a registered trademark of TP-Link Technologies Co., Ltd. Other brands and product names are trademarks or registered trademarks of their respective holders. No part of the specifications may be reproduced in any form or by any means or used to make any derivative such as translation, transformation, or adaptation without permission from TP-Link Technologies Co., Ltd.

*Maximum wireless signal rates are the physical rates derived from IEEE Standard 802.11 specifications. Actual wireless data throughput and wireless coverage are not guaranteed and will vary as a result of 1) environmental factors, including building materials, physical objects, and obstacles, 2) network conditions, including local interference, volume and density of traffic, product location, network complexity, and network overhead, and 3) client limitations, including rated performance, location, connection, quality, and client condition.

www.tp-link.com

TP-Link 450Mbps Wireless N Router TL-WR945N