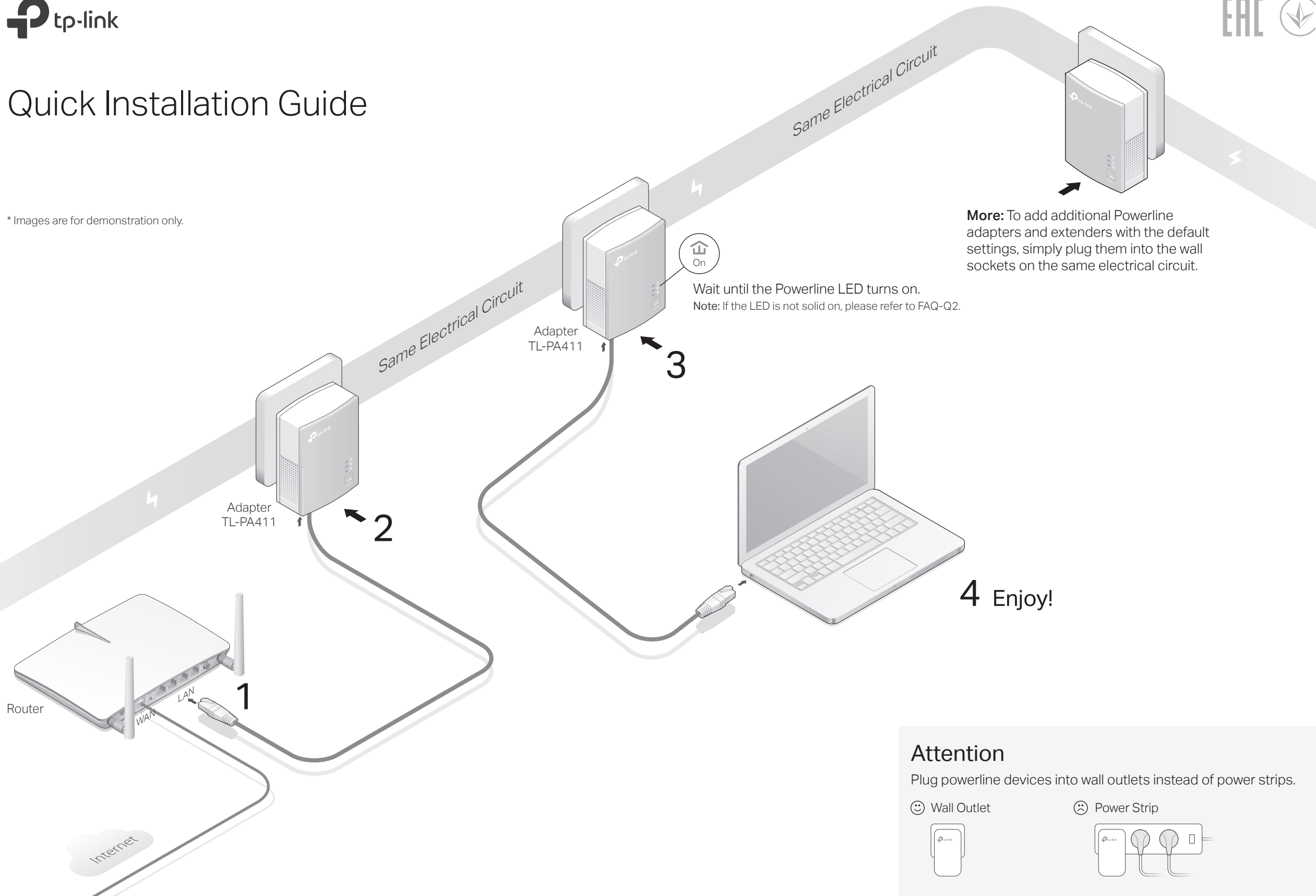


# Quick Installation Guide

\* Images are for demonstration only.



**More:** To add additional Powerline adapters and extenders with the default settings, simply plug them into the wall sockets on the same electrical circuit.

Wait until the Powerline LED turns on.  
Note: If the LED is not solid on, please refer to FAQ-Q2.

4 Enjoy!

**Attention**  
Plug powerline devices into wall outlets instead of power strips.




😊 Wall Outlet      ☹️ Power Strip

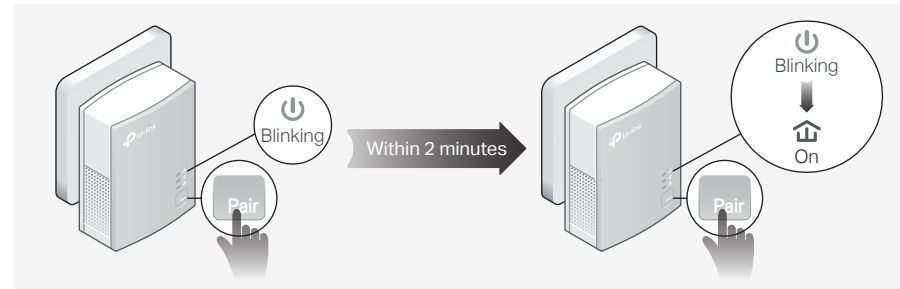
# Set Up a Secure Powerline Network by Pairing (Recommended)

You can create or join a secure powerline network using the Pair button on two devices at a time.

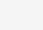
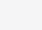
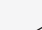
Tip: We recommend that you plug in the powerline devices near each other when pairing.

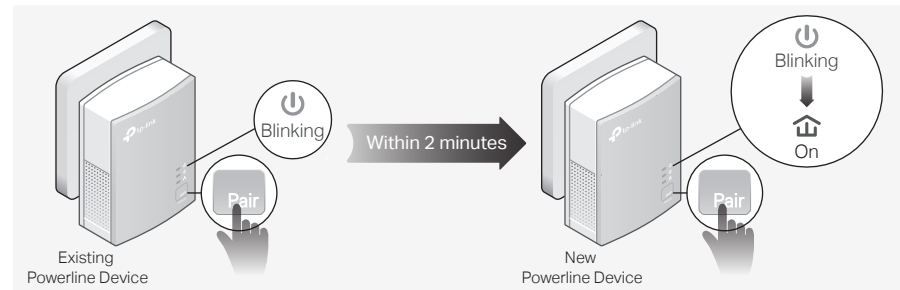
## To create a secure powerline network:

- 1 Press the Pair button on any of the powerline devices for 1 second. The  Power LED should start blinking.  
Note: If the Power LED does not blink, press the Pair button again.
- 2 (Within 2 minutes) press the Pair button on another device for 1 second. The  Power LED should start blinking.
- 3 When the  LED lights up, a powerline network has been successfully created.

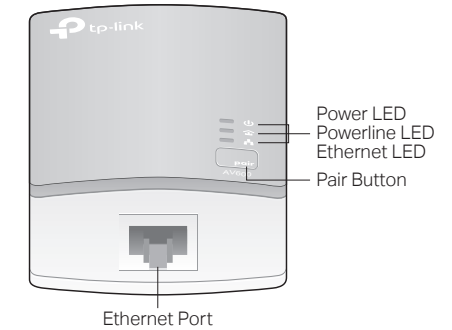


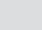
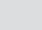
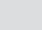
## To join an existing secure powerline network:

- 1 Press the Pair button on any of the existing powerline devices for 1 second. The  Power LED should start blinking.  
Note: If the Power LED does not blink, press the Pair button again.
- 2 (Within 2 minutes) press the Pair button on the new powerline adapter for 1 second. The  Power LED should start blinking.
- 3 When the  LED lights up, a powerline network has been successfully created.



# Physical Appearance




| LED   | STATUS   | DESCRIPTION  |
|---|----------|--|
|  Power       | On       | The powerline adapter is on.   |
|   | Blinking | Once every second: Pairing is in process.<br>Once every 15 seconds: Power-Saving Mode is on.*                |
|   | Off      | The powerline adapter is off.  |
|  Powerline | On       | The powerline adapter is successfully connected to a powerline network and is in a suitable location.        |
|   | Blinking | The powerline adapter is in a location with a poor signal strength. We recommend trying another wall socket. |
|   | Off      | The powerline adapter is not connected to any powerline network.   |
|  Ethernet  | On/Off   | The Ethernet port is connected or not connected.   |

\* If the device connected to the adapter is turned off or inactive for more than 5 minutes, the powerline adapter will automatically switch to Power-Saving Mode.

| ITEM        | DESCRIPTION  |
|-------------|--|
| Pair Button | Press for 1 second to set up or join a secure powerline network.<br>Press and hold for more than 6 seconds to reset the powerline adapter. |

# Frequently Asked Questions


## Q1. How do I reset my powerline adapter?

- A. With the powerline adapter plugged into an electrical outlet, press and hold the Pair button for more than 6 seconds until the Power LED  goes off momentarily and then comes back on.

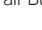
## Q2. What should I do if the Powerline LED is not solid on?

- If the LED is blinking:
  - A. The powerline adapter is in a location with a poor signal strength. Try another wall socket.
- If the LED is off:
  - A1. Try another wall socket and make sure all powerline devices are on the same electrical circuit.
  - A2. Try to set up a powerline network by pairing. Refer to the section above for instructions.
  - A3. If the problem persists, contact our Technical Support.

## Q3. What should I do if there is no internet connection in my powerline network?

- A1. Make sure all powerline devices are on the same electrical circuit.
- A2. Make sure the Powerline LEDs  are lit on all of your powerline devices. If they are not, pair all devices again.
- A3. Make sure all devices are correctly and securely connected.
- A4. Check if you have an internet connection by connecting the computer directly to the modem or router.

## Q4. What should I do if a successfully-paired powerline device does not reconnect after it is relocated?

- A1. Try another socket and make sure it is on the same electrical circuit.
- A2. Try to pair the device again, and make sure the Powerline LED  is on.
- A3. Check for possible interference due to a washing machine, air conditioner or other household appliance that may be too close to one of the powerline devices. Plug the appliance into the integrated electrical socket to remove the electrical noise if your powerline device has an integrated electrical socket.

# Easy Management

## Using tpPLC utility for advanced configuration:

1. Visit <https://www.tp-link.com>, and search for your product.
2. Find and download the compatible version of utility on its Support page.
3. Install the utility and start your configuration.

## Safety Information

- Keep the device away from water, fire, humidity or hot environments.
- Do not attempt to disassemble, repair, or modify the device.
- Plug the powerline devices directly into the wall outlets but not the power strips.
- The socket-outlet shall be installed near the equipment and shall be easily accessible.

For technical support, user manuals and more information, please visit <https://www.tp-link.com/support>, or simply scan the QR code.



TP-Link hereby declares that this device is in compliance with the essential requirements and other relevant provisions of directives 2014/30/EU, 2014/35/EU, 2009/125/EC and 2011/65/EU. The original EU declaration of conformity may be found at <https://www.tp-link.com/en/ce>.