

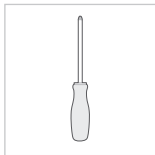


Let's get started with your Kasa Cam Outdoor Extension Cable.

Before You Start

Get Your Tools Ready

You'll need a Philips screw driver to secure the wall mount. Other tools will vary based on wall materials.



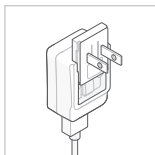
Notes:

1. If you don't need wall anchors, use a 3/32-inch drill bit.
2. If you're using the provided anchors, use a 7/32-inch drill bit.
3. If you need to route the USB cable through a wall, use a 7/8-inch drill bit, and caulk or sealant is necessary for an exterior wall.

STEP 1

Connect the Cord

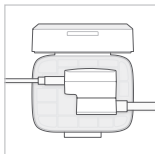
Press down on the latch to remove the plug adapter and slide the extension cord into position.



STEP 2

Put Into the Case

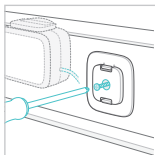
Open the weatherproof case and place the power adapter inside. Close the case and ensure it's latched to keep water out.



STEP 3

Affix the Case

Attach mounting plate to the wall using the screw provided and snap the weatherproof case onto the plate.



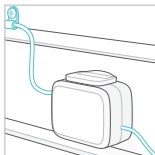
Notes:

1. Place the case at least 18-inches above any areas that may flood or become submerged in deep snow. Your case can withstand dust, rain and snow but shouldn't be submerged in water.
2. Place the case horizontally.

STEP 4

Fasten the Cables

Fasten the cables using wire clips. Make sure to leave a little slack in case you need to adjust things later.



Tip: Before fastening the cables, gently twist them to tightly fit the two outlet holes.



Need help?

Visit www.tp-link.com/support
for user guides, FAQs, warranty & more