

Quick Installation Guide

Range Extender

TL-WA850RE

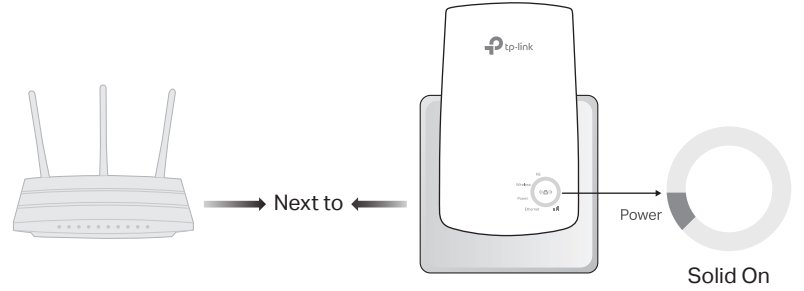


Need setup videos?

Scan the QR code, or visit <https://www.tp-link.com/download/TL-WA850RE.html>

1 Power On

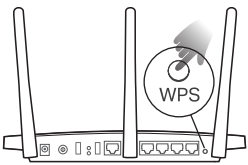
Plug the extender into a power outlet next to your router. Wait until its Power LED turns solid on.



2 Set Up

Method 1: Via the WPS Button

1. Press the WPS button on your router.

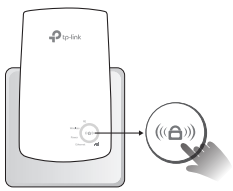


The WPS button might look like one of these:



2. Within 2 minutes, press the WPS button on the extender for 1 second. The RE LED should change from blinking to solid on, indicating successful connection.

Note: If the LED does not turn solid on, try again or use Method 2 or 3.



3. The extender uses your router's network name with _EXT at the end, and shares the same password as your router.

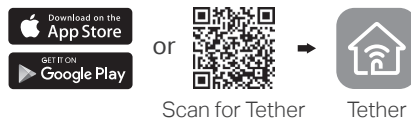
Note: If you want to change the extended network name, refer to Access Extender Settings on the back page.



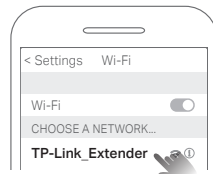
Extended Network Name:
Router's network name with _EXT at the end
Password:
Same as your router

Method 2: Via the Tether App

1. Get the up-to-date Tether app.



2. Connect your smartphone to the extender's network TP-Link_Extender.

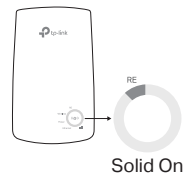


3. Launch the Tether app, and select your extender. Create a password to log in.



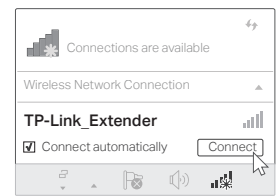
4. Follow app instructions to complete the setup. The RE LED should turn solid on, indicating successful connection to your router.

Note: If the LED does not turn solid on, refer to FAQ > Q2.



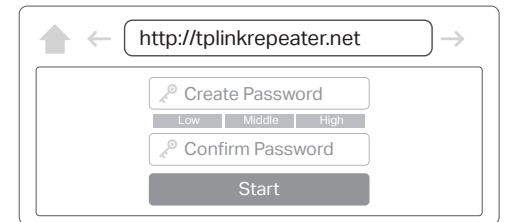
Method 3: Via a Web Browser

1. Connect your computer or smartphone to the extender's network TP-Link_Extender. If you are using a computer, unplug the Ethernet cable if any.



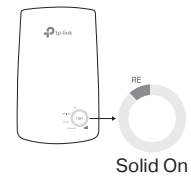
2. Launch a web browser, and enter <http://tplinkrepeater.net> or <http://192.168.0.254> in the address bar. Create a password to log in.

Note: If the login window does not appear, refer to FAQ > Q1.



3. Follow web instructions to complete the setup. The RE LED should turn solid on, indicating successful connection to your router.

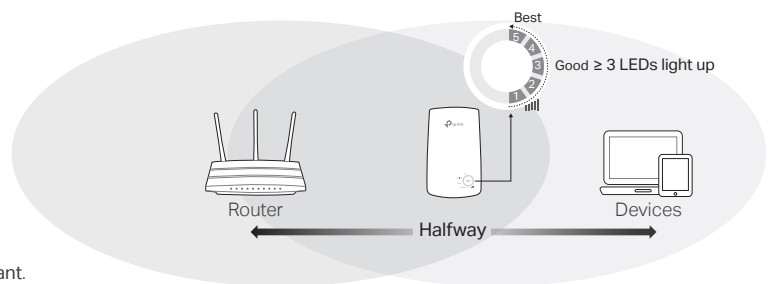
Note: If the LED does not turn solid on, refer to FAQ > Q2.



3 Relocate

1. Plug in the extender about **halfway** between your router and the Wi-Fi dead zone. The location you choose must be **within the range of your router**.
2. Wait for about 2 minutes until **3 or more** LEDs light up. If not, **relocate the extender closer to the router** to achieve better signal quality.

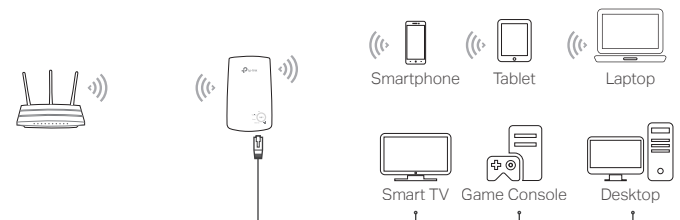
Tip: For more intuitive location assistant, access extender settings via the Tether app and go to Tools > Location Assistant.



Enjoy!

Connect your devices to the extender wirelessly or via an Ethernet cable, then enjoy the internet.

Tip: You can also set up the extender in Access Point mode to transform your existing wired network to a wireless one. For details, refer to the user guide at <https://www.tp-link.com/support>.



Access Extender Settings

After setup, you can access extender settings via any of the methods below. You can reselect host network, change extended network settings and more.

Note: If your extender and router use the same network name, Method 1 is recommended.

Method 1: Via the Tether App



1. Connect your smartphone to the extender's or router's network.
2. Launch the Tether app, select your extender, and log in.
3. View or change extender settings as needed.

Method 2: Via a Web Browser

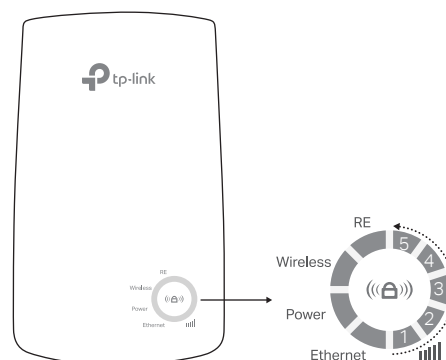


1. Connect your computer or smartphone to the extender's network. If you are using a computer, unplug the Ethernet cable if any.
2. Launch a web browser, enter <http://tplinkrepeater.net> in the address bar, and log in.

Note: If the login window does not appear, refer to FAQ > Q1.

3. View or change extender settings as needed.

LED Explanation



| LED | Status | Indication (For Range Extender Mode) |
|-------------------|--------------------|---|
| RE | On/Off Blinking | The extender is connected or not connected to your router's wireless network. WPS connection is in progress. |
| Wireless | On/Off | The extender's wireless function is enabled or disabled. |
| Power | On/Off Blinking | The extender is on or off. The system is starting up or firmware upgrade is in progress. |
| (Signal Strength) | On/Off | Indicates the Wi-Fi connection between the extender and the router. More lit LEDs indicates a better signal strength. |
| Ethernet | On/Off | The Ethernet port is connected or not connected to a powered-on device. |

FAQ (Frequently Asked Questions)

Q1. What should I do if I cannot access the extender's web management page?

- Make sure your computer or smartphone has connected to the extender's network, and not that of your router. If your router and extender share the same network name, connect your computer to the extender via an Ethernet cable, or use the Tether app.
- If you are using a computer, make sure it is set to obtain an IP address and DNS server address automatically.
- Verify that <http://tplinkrepeater.net> or <http://192.168.0.254> is correctly entered in the web browser and press **Enter**. Note that <http://192.168.0.254> applies only for extenders with factory default settings.
- Use another web browser and try again.
- Reboot or reset the extender and try again.

If you are still having problems, contact our technical support.

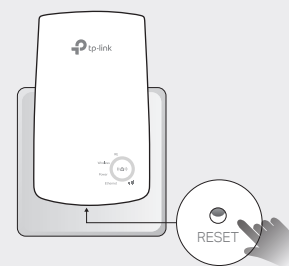
Q2. What should I do if the RE LED doesn't turn solid on after completing setup via the Tether app or web browser?

- You may have entered incorrect Wi-Fi password for your host router during the configuration. Check the password and try again.
- Make sure the extender is close to your router, preferably within 16 feet, and away from large electrical appliances.
- If you have enabled wireless MAC filtering, wireless access control, or access control list (ACL) on your router, disable them first, then follow any method on the front page to complete the configuration.
- Try setting up via the WPS button.
- Reset the extender and go through the configuration again.

If you are still having problems, contact our technical support.

Q3. How do I reset the extender?

- With the extender powered on, use a pin to press the **RESET** button for 1 second. The extender will reboot.



Safety Information

- Keep the device away from water, fire, humidity or hot environments.
- Do not attempt to disassemble, repair, or modify the device.
- Do not use the device where wireless devices are not allowed.
- The socket-outlet shall be installed near the equipment and shall be easily accessible.

Please read and follow the above safety information when operating the device. We cannot guarantee that no accidents or damage will occur due to improper use of the device. Please use this product with care and operate at your own risk.

TP-Link hereby declares that the device is in compliance with the essential requirements and other relevant provisions of directives 2014/53/EU, 2009/125/EC and 2011/65/EU. The original EU declaration of conformity may be found at <https://www.tp-link.com/en/ce>.

