





300Mbps Wireless N Access Point

Easy Network Expansion
with N300 Wi-Fi

TL-WA801N



 300Mbps 2.4GHz |  Passive PoE |  5dBi Antennas

Highlights

Multiple Operating Modes Supported

Supports Access Point, Range Extender, Client and Multi-SSID modes to provide a more dynamic and comprehensive experience for all the users. Multiple operating modes also help you easily build a wireless network for hard-to-wire locations to eliminate wireless dead zone.



Typical Applications

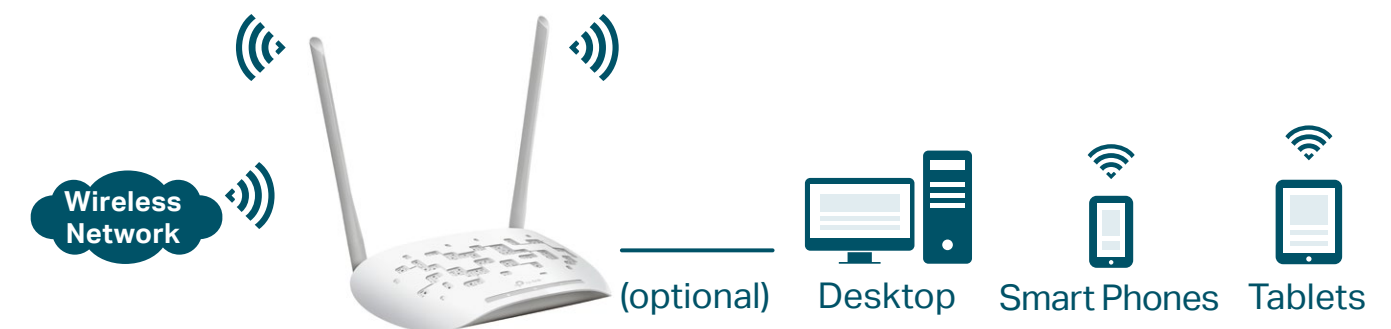
Access Point

Transform your existing wired network into a wireless network



Range Extender

Extend your existing wireless coverage by repeating the wireless signal



Client (Media Adapter)

Acting as a "Wireless Adapter" to connect your wired devices to a wireless network



Highlights

Reliable Wi-Fi for Home Entertainment

With 2× 2 MIMO technology, TL-WA801N reaches speeds of up to 300 Mbps, the maximum speed available on a single 2.4 GHz band, working smoothly with bandwidth-intensive tasks including VoIP, HD streaming, or online gaming—without lag. Its wall-mounting design helps you save space on your desk.

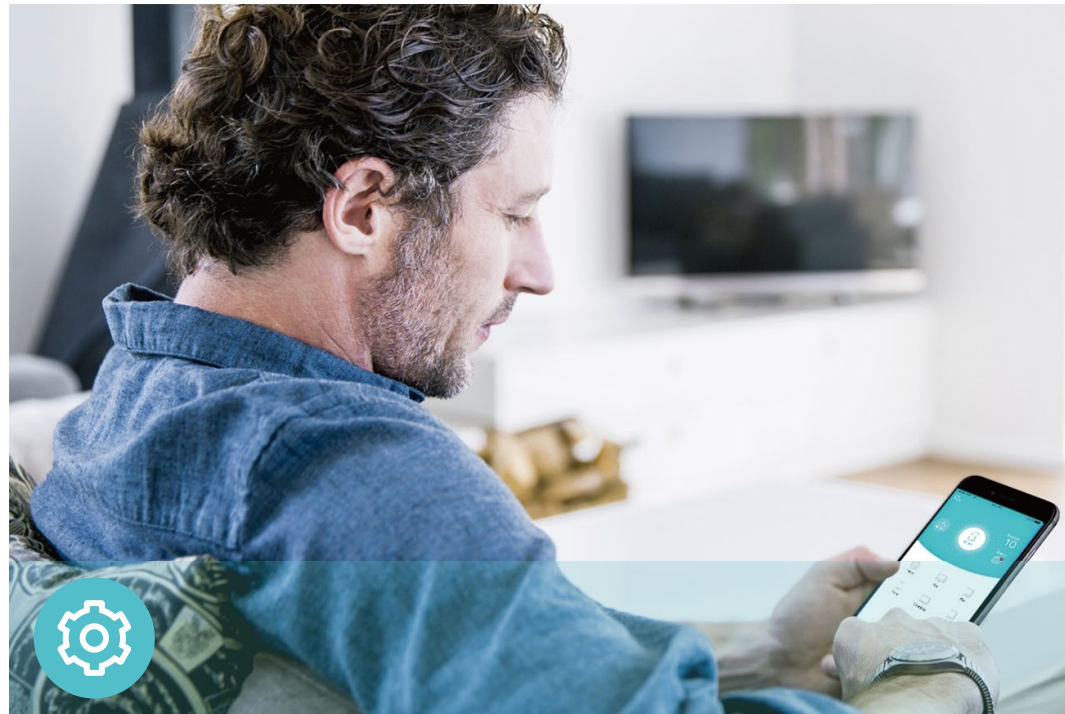


Passive PoE for More Flexible Deployment

TL-WA801N can be powered using an Ethernet cable to simultaneously send data and electricity to wherever your AP is located, even up to 100 feet away. The AP can be placed anywhere flexibly, making it incredibly easy to find the best location for optimum signal reception.



Features



Ease of Use

- Intuitive Web UI – Ensures quick and simple installation without hassle
- Power On/Off – Conveniently power on or off your router as required
- Passive PoE – Supplies power along the Ethernet cable to allow flexible installation without the need of a power outlet



Reliability

- Multi-Mode – Supports Access Point, Range Extender, Client and Multi-SSID (VLAN supported) modes to meet any network need
- MAC Filtering – Enables or disables device access based on MAC address



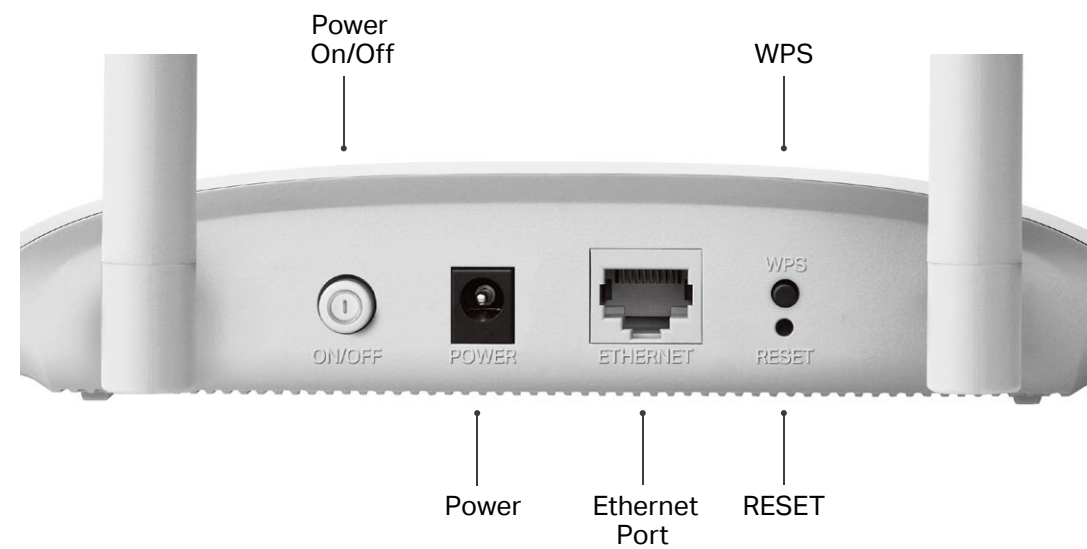
Security

- Security – Protects your home network with WPA2 encryption
- WPS – Makes secure wireless connection quick and easy with the push of a button
- Throughput Monitor – Displays real-time access to wireless data transmission

Specifications

Hardware

- Ethernet Port: 1 10/100Mbps Ethernet Port (Supports Passive PoE)
- Buttons: Power On/Off Button, WPS Button, RESET Button
- Antennas: 2 Fixed Omni-Directional Antennas
- External Power Supply: 9VDC/0.6A
- Dimensions (W x D x H): 7.1×5.1×1.4in (181.6x129.5x36.2mm)



Wireless

- Wireless Standards: IEEE 802.11b/g/n
- Frequency: 2.4GHz
- Signal Rate: 300Mbps at 2.4GHz
- Transmit Power:
CE: <15dBm; FCC: <20dBm
- Reception Sensitivity:
11g 6Mbps: -90dBm
11g 54Mbps: -77dBm
11n HT20 MC7: -73dBm
11n HT40 MC7: -70dBm
- Wireless Function: Enable/Disable Wireless Radio, WMM, Short GI, AP Isolation, Wireless Statistics, Throughput Monitor
- Wireless Security: WEP, WPA/WPA2, WPA/WPA2-PSK encryptions

Specifications

Software

- Quality of Service: WMM
- DHCP: DHCP Server, DHCP Client List, Address Reservation, Address Lease Time
- Wireless Modes: Access Point, Range Extender, Client, Multi-SSID
- WPS: Software WPS Button, Client's PIN, Router's PIN
- System Tools: SNMP, Ping Watch Dog, Time Settings, Diagnostic, Firmware Upgrade, Backup & Restore, System Log



For more information, please visit

https://www.tp-link.com/products/details/?model=TL-WA801N_V6

or scan the QR code left

Others

- Certification:
CE, FCC, RoHS
- System Requirements:
Microsoft Windows 98SE/NT/2000/XP/Vista™/7/8/8.1/10, MAC OS, NetWare, UNIX or Linux
Internet Explorer 11, Firefox 12.0, Chrome 20.0, Safari 4.0, or other Java-enabled browser
Cable or DSL Modem
Subscription with an Internet Service Provider (for Internet access)
- Environment:
Operating Temperature: 0°C~40°C (32°F ~104°F)
Storage Temperature: -40°C~70°C (-40°F ~158°F)
Operating Humidity: 10%~90% RH
Storage Humidity: 5%~90% RH
- Package Contents
Wireless Access Point TL-WA801N
Power Adapter
Passive PoE Power Injector
RJ45 Ethernet Cable
Quick Installation Guide

This device complies with part 15 of the FCC Rules. Operation is subject to the following two conditions: (1) This device may not cause harmful interference, and (2) this device must accept any interference received, including interference that may cause undesired operation.

Specifications are subject to change without notice. TP-Link is a registered trademark of TP-Link Technologies Co., Ltd. Other brands and product names are trademarks or registered trademarks of their respective holders. Copyright ©2019 TP-Link Technologies Co., Ltd. All rights reserved.

*Maximum wireless signal rates are the physical rates derived from IEEE Standard 802.11 specifications. Actual wireless data throughput and wireless coverage are not guaranteed and will vary as a result of network conditions, client limitations, and environmental factors, including building materials, obstacles, volume and density of traffic, and client location.

www.tp-link.com

TP-Link 300Mbps Wireless N Access Point TL-WA801N