




# AC1750 Wi-Fi Range Extender


Stable Dual-Band Wi-Fi Extension



RE455

 Wi-Fi Dead-Zone Killer

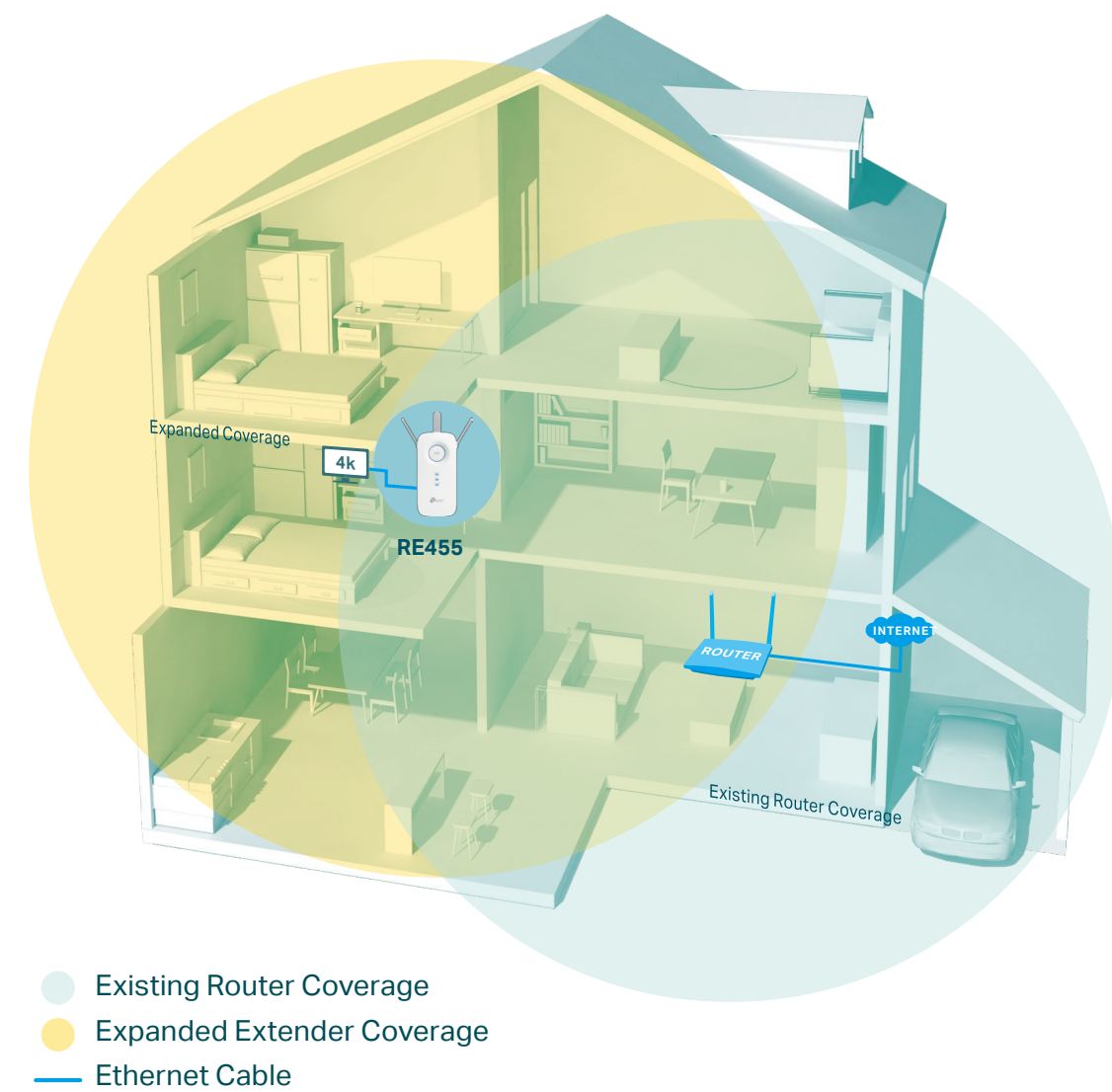
 Gigabit Ethernet Port

 Easy Setup via Tether App

# Highlights

## Extend Powerful AC1750 Wi-Fi to Your Whole Home

The AC1750 Wi-Fi Range Extender connects to your router wirelessly, strengthening and expanding its signal into areas it can't reach on its own, achieving speeds of 450 Mbps on the 2.4 GHz band and 1300 Mbps on the 5 GHz band.



## Perfect Location at a Glance

An Intelligent Signal light helps you quickly find the best spot to install the range extender.

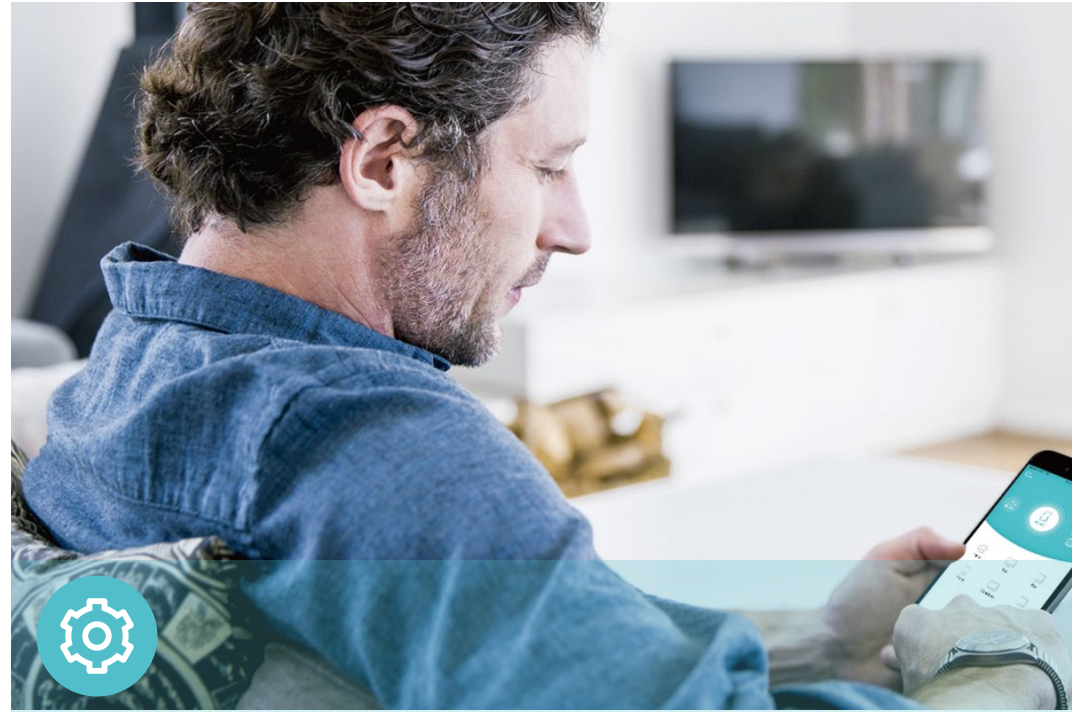


Good connection



Too far away from the router

# Features



## Ease of Use

- Intuitive Web UI – Ensures quick and simple installation without hassle.
- Fast Encryption – Instantly connect to the router with the touch of the WPS button
- Easy On/Off – LED On/Off button allows users to turn LED on or off
- Power Scheduling – Schedule the power on or off to your needs to save power
- Hassle-free Management with Tether App – Network management is made easy with the TP-Link Tether App, available on any Android or iOS device
- Online Upgrade – Keeps you informed of the latest firmware and allows online updating on the web UI



## Speed

- Ultimate Wireless Speed – Combined wireless speeds of up to 450 Mbps (over 2.4 GHz) and 1300 Mbps (over 5 GHz)
- Support 802.11 ac – Provides a data transfer rate 3 times faster than 802.11n for each stream
- High Speed Mode – Use both Wi-Fi bands to establish one super-high-speed connection, ideal for HD streaming&gaming
- Gigabit Ethernet Port – Plug in to give wired device network access, particularly ideal for high bandwidth consuming devices



## Reliability

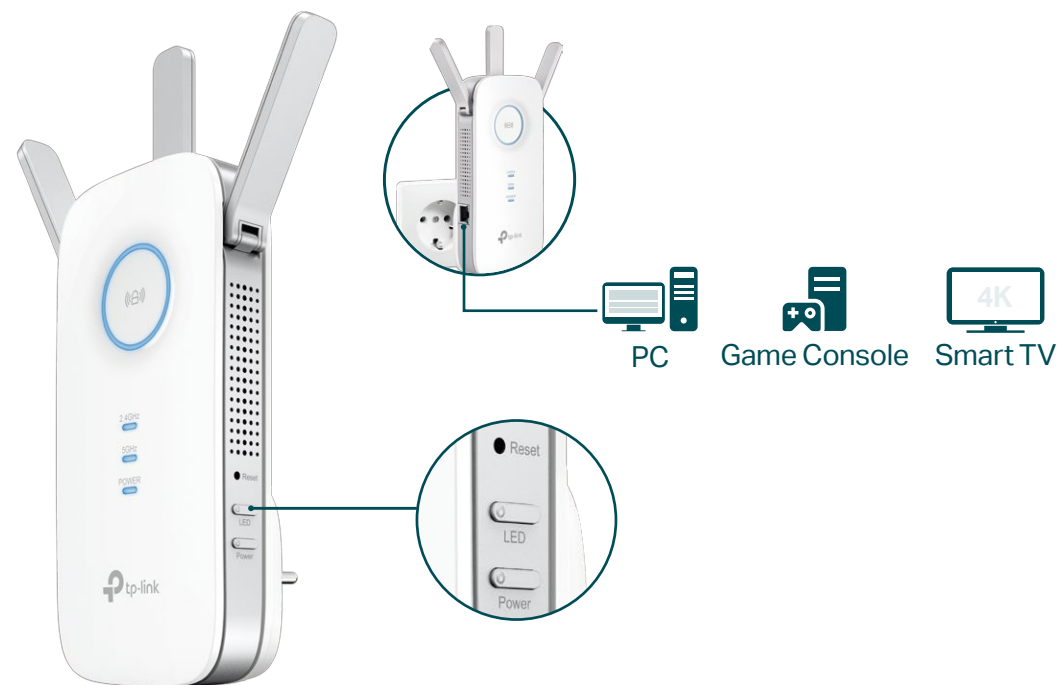
- Simultaneous Dual Band – Separate 2.4 GHz and 5 GHz Wi-Fi bands allow more devices to connect to your network without reducing performance
- Reliable Connection – Three adjustable external antennas provide stronger connections and greater Wi-Fi coverage
- Access Control – Allow or restrict internet access for certain devices for specifiable amounts of time



# Specifications

## Hardware

- Ethernet Port: 1 10/100/1000Mbps RJ45 Port
- Button: WPS Button, Reset Button, LED On/Off Button, Power On/Off Button
- Antenna: 3 External Omni-Directional Antennas
- Max Power Consumption: <13W
- Dimensions (W × D × H):  
3.4×1.1×6.4 in. (86.4×29×163 mm)



For more information, please visit

<https://www.tp-link.com/home-networking/range-extender/re455/>

or scan the QR code left

\*Maximum wireless signal rates are the physical rates derived from IEEE Standard 802.11 specifications. Actual wireless data throughput and wireless coverage per m2 are not guaranteed and will vary as a result of network conditions, client limitations, and environmental factors, including building materials, obstacles, volume and density of traffic, and client location.

\*The product may not be compatible with routers or gateways with firmware that has been altered, is based on open source programs, or is non-standard or outdated.

Specifications are subject to change without notice. TP-Link is a registered trademark of TP-Link Technologies Co., Ltd. Other brands and product names are trademarks or registered trademarks of their respective holders. Copyright ©2019 TP-Link Technologies Co., Ltd. All rights reserved.

Attention: This device may only be used indoors in all EU member states and EFTA countries.

## Wireless

- Wireless Standards: IEEE 802.11a/n/ac 5 GHz, IEEE 802.11b/g/n 2.4 GHz
- Frequency: 2.4 GHz and 5 GHz
- Signal Rate: 450 Mbps at 2.4 GHz, 1300Mbps at 5 GHz
- Transmit Power:  
CE: <20 dBm (2.4 GHz), <30 dBm (5 GHz)
- Reception Sensitivity:  
5G Hz:  
11a 6Mbps: -93dBm, 11a 54Mbps: -76dBm  
11ac HT20 MCS0: -93dBm, 11ac HT20 MCS8: -69dBm  
11ac HT40 MCS0: -90dBm, 11ac HT40 MCS9: -64dBm  
11ac HT80 MCS0: -87dBm, 11ac HT80 MCS9: -61dBm  
2.4 GHz:  
11g 54Mbps: -76dBm  
11n HT20 MCS7: -73dBm  
11n HT40 MCS7: -70dBm
- Wireless Function: WMM, Short GI, Enable/Disable Wireless Radio, Wireless Statistics, High Speed
- Wireless Security: 64/128-bit WEP, WPA/WPA2, WPA/WPA2-PSK encryptions

## Others

- Certification  
CE, RoHS
- System Requirements  
Microsoft Windows 98SE, NT, 2000, XP, Vista™ or Windows 7, 8, 8.1, 10, MAC OS, NetWare, UNIX or Linux  
Internet Explorer 11, Firefox 12.0, Chrome 20.0, Safari 4.0, or other Java-enabled browser
- Package Contents  
AC1750 Wi-Fi Range Extender RE455  
Quick Installation Guide

[www.tp-link.com](http://www.tp-link.com)

TP-Link AC1750 Wi-Fi Range Extender RE455