



AC1600 Hybrid Modem Router with VoIP

Powerful Wi-Fi and Gigabit Wired for a High-Speed Home
Switch between DSL/EWAN and LTE



VC321-G2h



1600Mbps Dual Band Wi-Fi



Gigabit Ports



4G(TDD&FDD)/3G Compatible

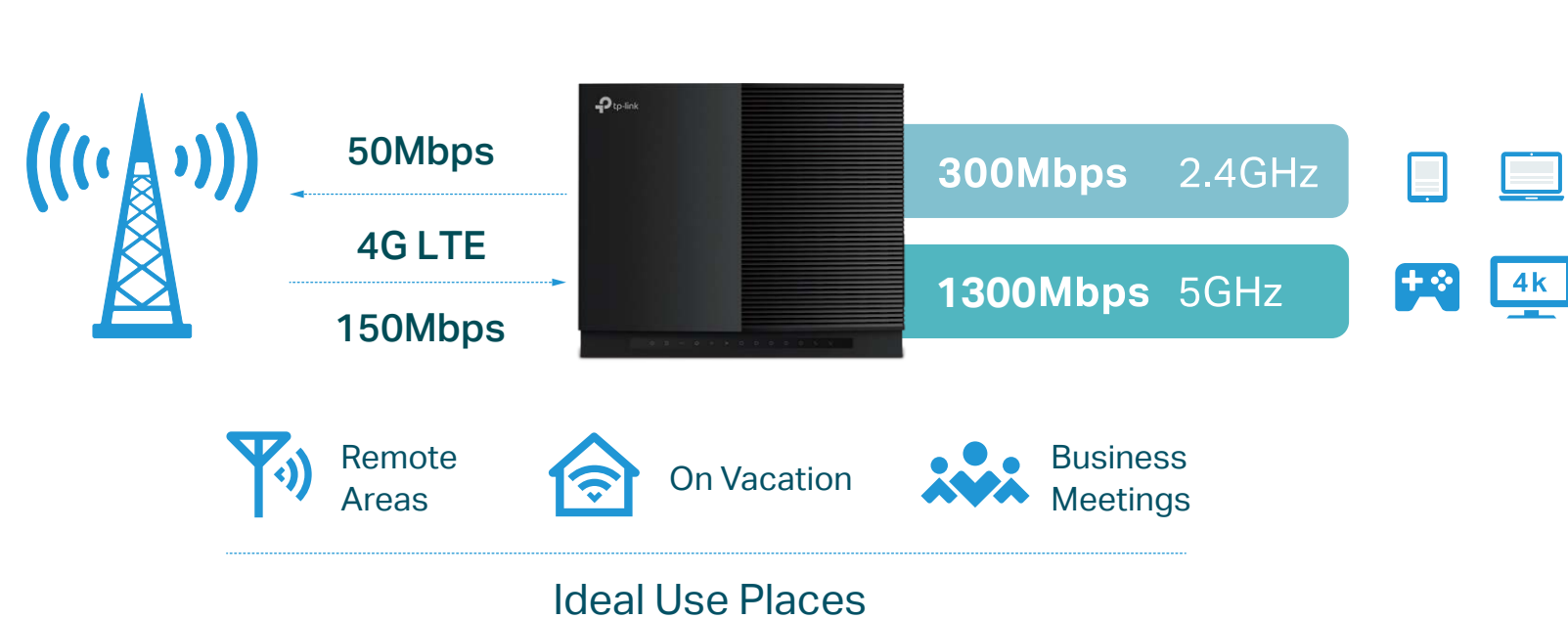


VoIP

Highlights

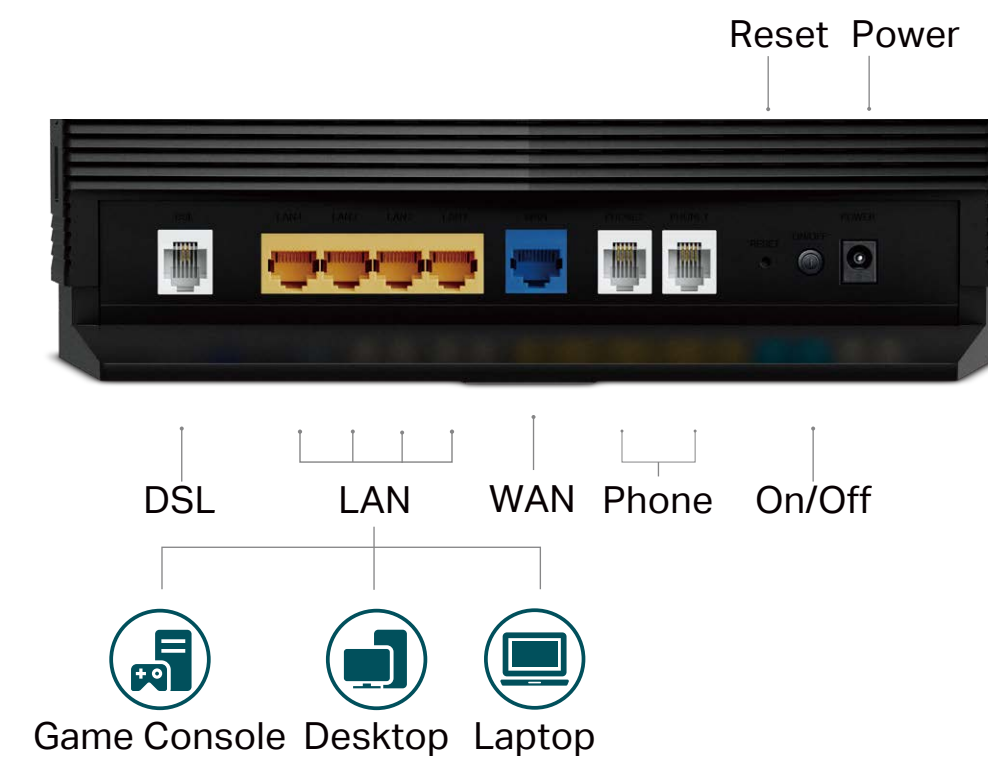
Superfast 4G LTE Speed & Stream-Ready AC Wi-Fi

The VC321-G2h uses 4G LTE technology to achieve speeds of up to 150Mbps download and 50Mbps upload. It also shares a simultaneous dual band Wi-Fi network with maximum speeds of 300Mbps on 2.4GHz and 1300Mbps on 5GHz.



Versatile Connectivity

With multiple inputs, the Archer VC321-G2h provides you with a variety of internet connection options. The DSL port accepts the connections from telephone cable. The WAN port accepts the connections from cable or fiber modem via Ethernet cable. The built-in SIM slot allows you to share your 4G LTE network with multiple Wi-Fi devices and allows you surf the internet continue as a backup when DSL/EWAN connection break.



Highlights

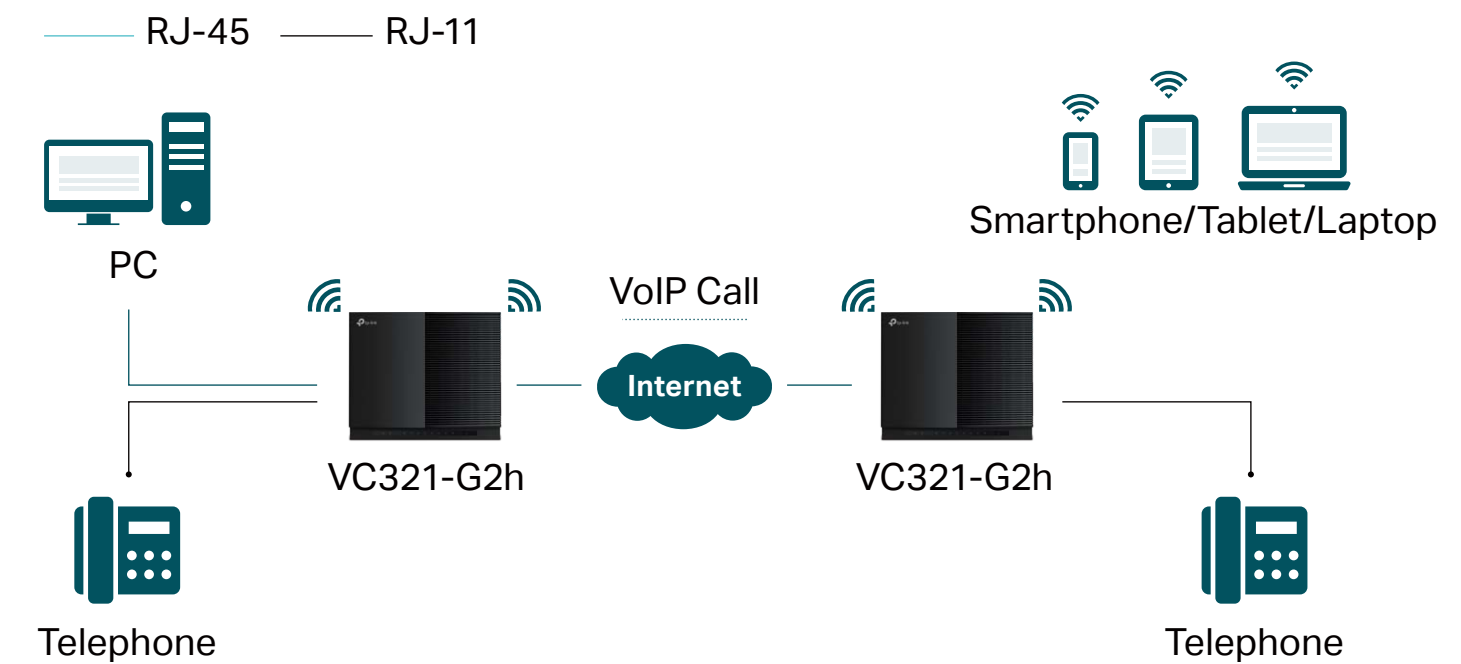
Plug and Play

Simply insert your 3G/4G SIM card into the built-in slot, turn on the VC321-G2h and start surfing.

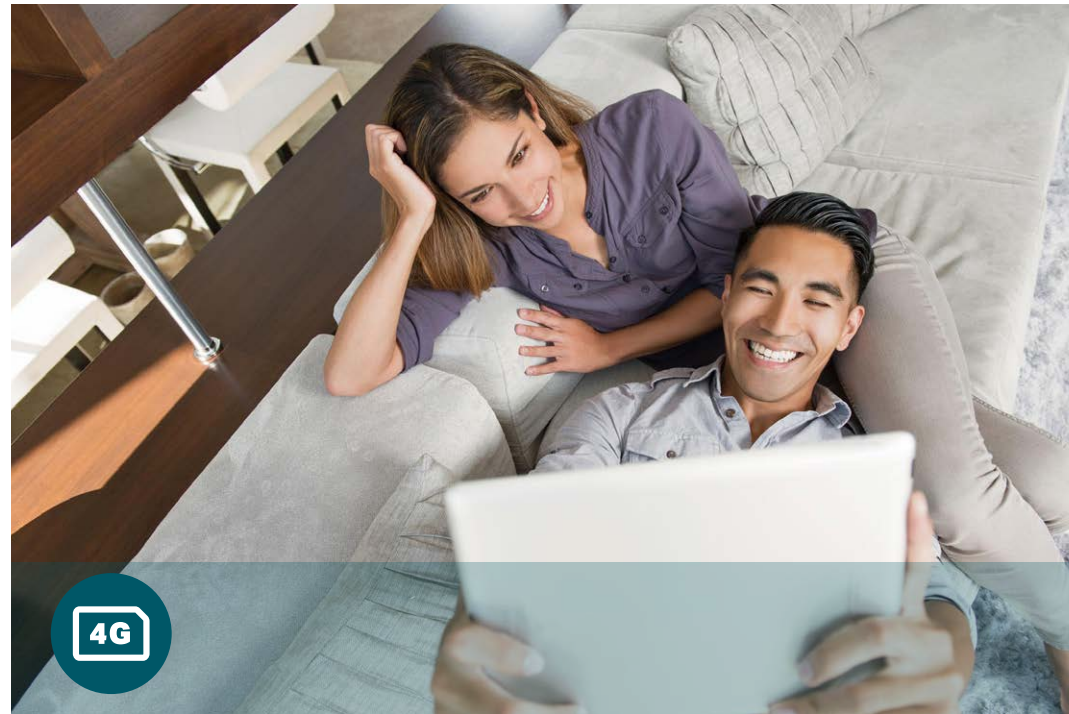


VoIP Calls

With 2 FXS ports, users can make or receive phone calls over the internet simply by connecting the device to their existing telephone set.



Features



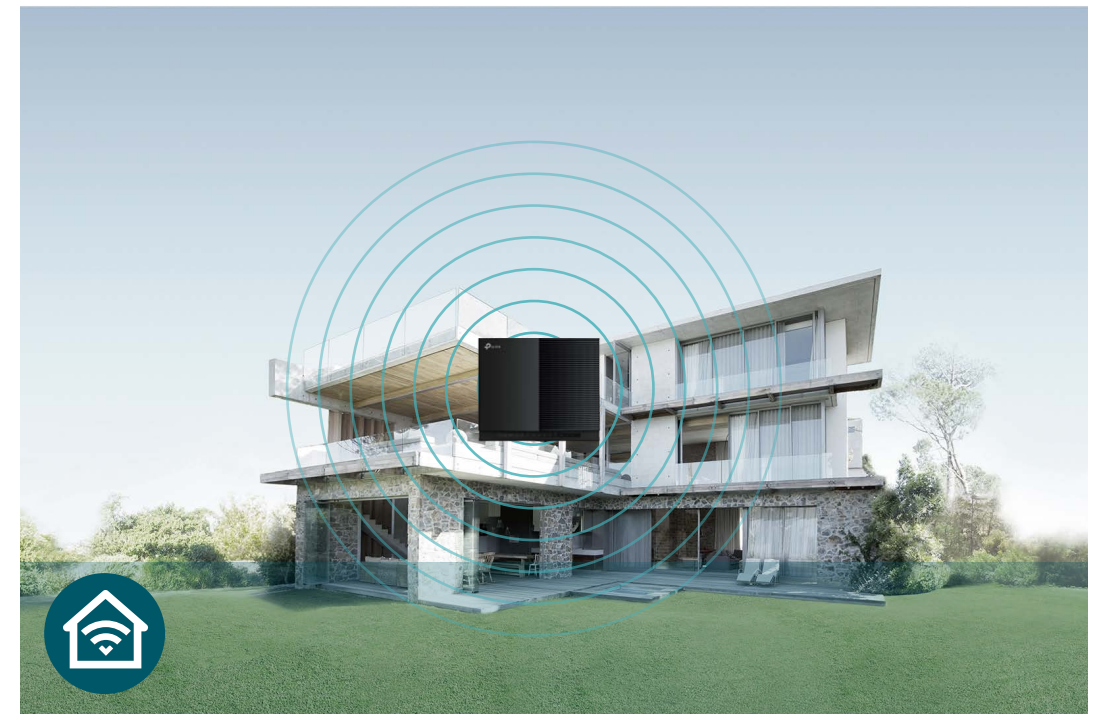
4G LTE

- 4G LTE – Ideal for cutting-edge 4G LTE network
- 150Mbps/50Mbps – 150Mbps Download speeds and 50Mbps upload speeds
- Backward Compatible – Compatible with 4G/3G network



Speed

- Blazing Fast Wireless Speed – Combined wireless speeds up to 1.6Gbps at 2.4GHz & 5GHz band concurrently
- Support 802.11 ac – Offering 3 times faster data rate than 802.11n in a single stream
- Gigabit Wired Speed – Enjoy rapid, reliable wired connections for gaming and streaming in the best quality



Wi-Fi Range

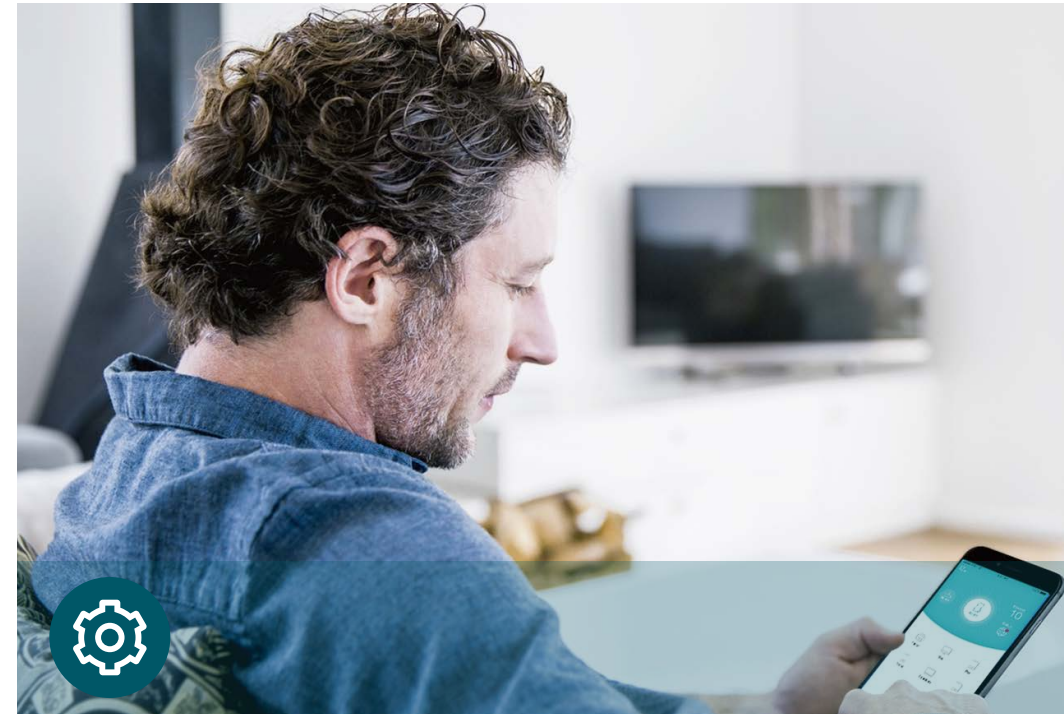
- Wi-Fi with Beamforming – Beamforming technology locates the connected devices and further improves the VC321-G2h's range and the signal strength to each mobile device, delivering a more reliable and efficient wireless connection

Features



Reliability

- Simultaneous Dual Band – Separate Wi-Fi bands enable more devices to connect to your network without a drop in performance



Ease of Use

- Intuitive Web UI – Ensures quick and simple installation without hassle
- Fast Encryption – One-touch WPA wireless security encryption with the WPS button
- Power On/Off – Conveniently power on or off your router as required
- Web UI Upgrade – Update firmware on the web UI



Security

- Parental Control – Manage when and how connected devices can access the internet
- VPN Server – Support PPTP VPN and OpenVPN , easily setup a secure connection between your private networks to the Internet
- Encryptions for Secure Network – WPA-PSK/WPA2- PSK encryptions provide active protection against security threats

Specifications

Hardware

- Interface: 4 10/100/1000Mbps RJ45 LAN Ports, 1 10/100/1000Mbps RJ45 WAN Port, 1 RJ11 DSL Port, 1 LTE slot, 2 FXS Port
- Buttons: Power On/Off Button, WPS On/Off Button, Wireless On/Off Button, RESET Button
- Antennas: 2.4G 2 Internal Antennas, 5G 2 Internal Antennas, LTE 2 Internal Antennas
- External Power Supply: 12V/2A
- PCB Dimensions: 219*154*1.6 mm

Wireless

- Network Type
 - 4G: FDD-LTE Cat4 B1/B3/B5/B7/B8/B20/B28 (2100/1800/850/2600/900/800/700MHz)
 - TDD-LTE B38/B39/B40/B41 (2600/1900/2300/2500MHz)
 - 3G: DC-HSPA+ /HSPA+/HSPA/WCDMA B1/B5/B8 (2100/850/900MHz)
- Wireless Standards: IEEE 802.11ac/n/a 5GHz, IEEE 802.11b/g/n 2.4GHz
- Frequency: 2.4GHz and 5GHz
- Signal Rate: 1300Mbps at 5GHz, 300Mbps at 2.4GHz
- Transmit Power: <36dbm(2.4GHz), < 23dbm(5G Band 1), <36dbm(5G Band 4)
- Wireless Function: Enable/Disable Wireless Radio, WMM, Wireless Statistics
- Wireless Security: 64/128-bit WEP, WPA/WPA2, WPA-PSK/WPA-PSK2 encryptions

Specifications

Software

- DHCP: Server, Client, DHCP Client List, Address Reservation, DHCP Relay
- Quality of Service: Bandwidth Control
- Port Forwarding: Virtual Server, Port Triggering, DMZ, ALG, UPnP
- Dynamic DNS: DynDns, NO-IP
- VPN Passthrough: PPTP, IPSec Passthrough
- ATM/PPP Protocols: ATM Forum UNI3.1/4.0, PPP over ATM (RFC 2364), PPP over Ethernet (RFC2516), IPoA (RFC1577/2225), MERIPoE (RFC 1483 Routed), Bridge (RFC1483 Bridge), PVC – Up to 8 PVCs
- Security: NAT Firewall, Access Control, MAC / IP / URL Filtering, Denial of Service (DoS), SYN Flooding, IP and MAC Address Binding
- Functions: Parental Control, Network Address Translation(NAT), Port Mapping (Grouping), Static Routing, RIP v1/v2(optional), DNS Relay, DDNS, IGMP V1/V2/V3
- Management: Web Based Configuration(HTTP), Remote management, Command Line Interface, SSL for TR-069, SNMP v1/2c, Web Based Firmware Upgrade, Diagnostic Tool
IPSec VPN: Supports up to 16 IPSec VPN tunnels
- Protocols: Supports IPv4 and IPv6

Others

- Certification
CE RCM
- System Requirements
Microsoft Windows 98SE, NT, 2000, XP, Vista™ or Windows 7, 8, 8.1, 10, MAC OS, NetWare, UNIX or Linux

Internet Explorer 11, Firefox 12.0, Chrome 20.0, Safari 4.0, or other Java-enabled browser

Cable or DSL Modem
- Environment
Operating Temperature: 0°C~40°C (32°F ~104°F)
Storage Temperature: -40°C~70°C (-40°F ~158°F)
Operating Humidity: 10%~90% non-condensing
Storage Humidity: 5%~90% non-condensing