



Smart Wi-Fi Plug

With Energy Monitoring



HS110



Remote Access



Scheduling



Energy Monitoring



Away Mode

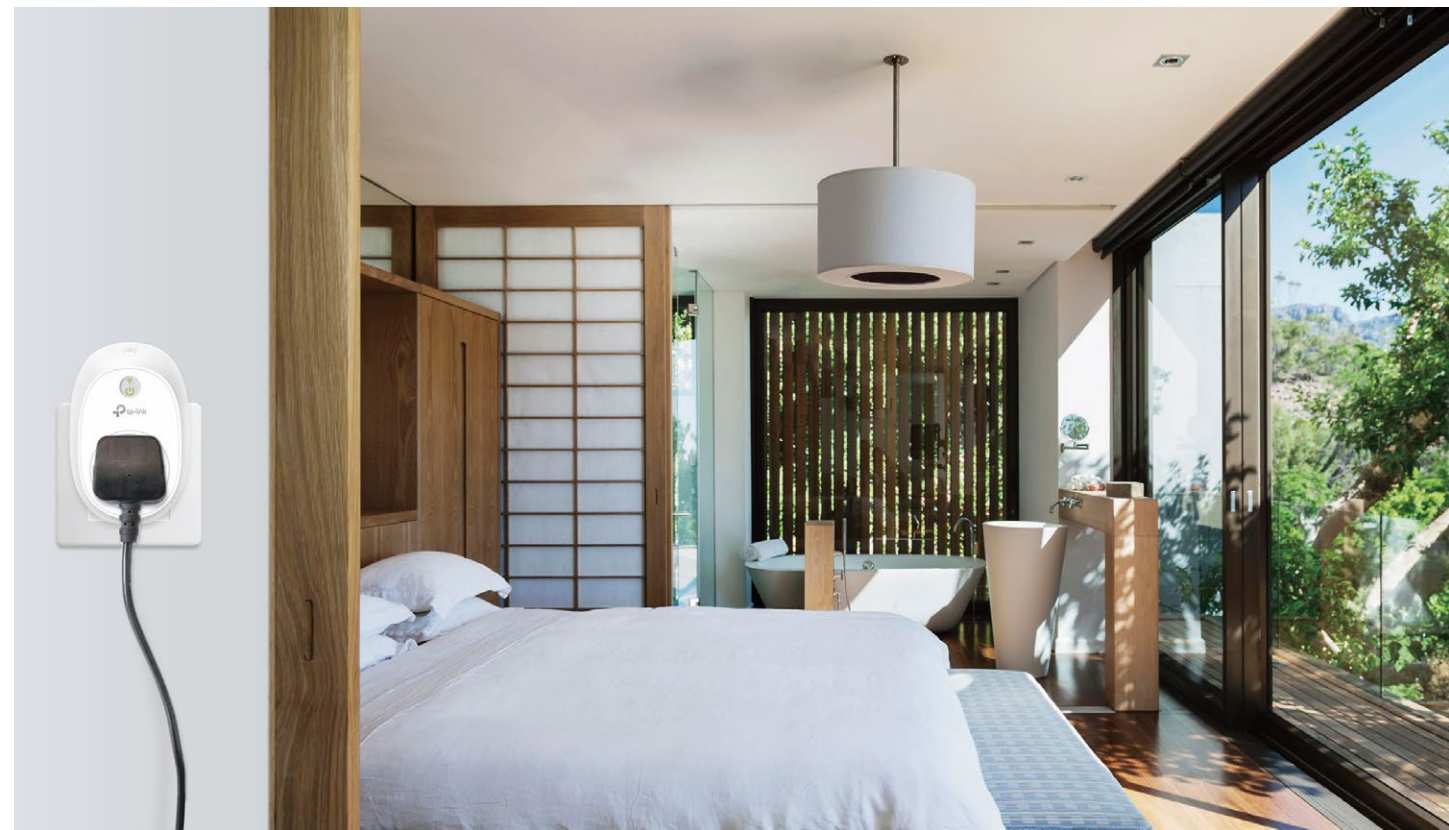


Kasa for Mobile

Highlights

Easily Manage Your Home Electronics Anytime, Anywhere

The Smart Plugs are easy to set up, and make it easier to manage your home electronics anywhere in the world with a tap of your smartphone. You can also schedule the Smart Plugs to automatically power electronics on and off as needed.



Compatible with Amazon Alexa or Google Assistant for Voice Control

You can use Kasa to pair TP-Link smart home products with Amazon Alexa or Google Assistant, giving you the ability to control your home with voice commands.



Features



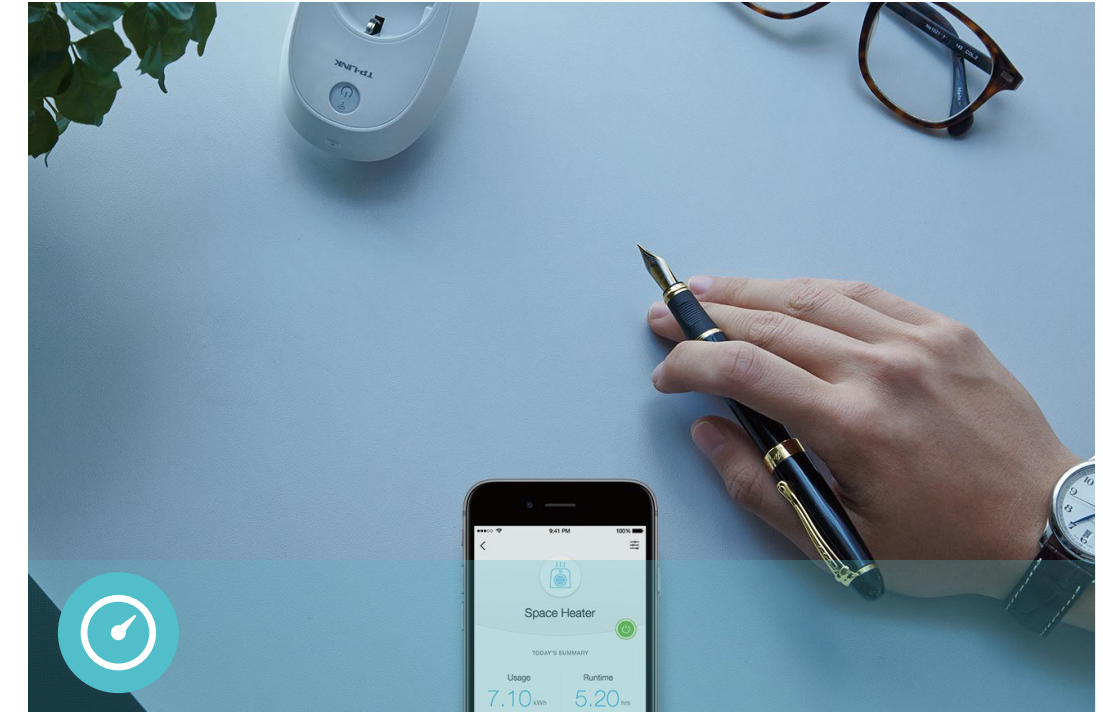
Ease of Use

- **Anywhere and Anytime** – Easy setup and control devices connected to the Smart Plugs anywhere with the free Kasa Smart app.
- **Schedule and Timer** – Schedule the Smart Plugs to automatically power electronics on and off as needed, like setting lights to come on at dusk or turn off at sunrise.



Compatibility

- **Works with Amazon Alexa or Google Assistant** – You can pair the Smart Plugs with Amazon Alexa or Google Assistant for voice control.
- **Compatible with Android, iOS** – The free Kasa app lets you run Smart Plugs from any Android (5.0 and higher) or iOS (iOS 10.0 and higher) devices.



Energy Conservation

- **Energy Monitoring** – You can efficiently conserve energy and save money while using the Smart Plugs to control your space heaters and fans. The Smart Plugs track your device's power consumption in real-time, and have weekly and monthly summaries.

Specifications

Working Status

- Input voltage: 100 - 240VAC
- Output voltage: 100 - 240VAC
- Maximum Load: 13A
- Maximum Power: $13A \times 230V = 2.99KW$

Network

- Protocol: IEEE 802.11b/g/n
- Wireless Type: 2.4 GHz
- System Requirements: Android 5.0 or higher, iOS 10.0 or higher

General

- Package Contents:
 - Smart Wi-Fi Plug HS110
 - Quick Start Guide
- Certifications: CE, RoHS
- Material: PC
- Buttons: Power&Wi-Fi Button, Settings Button
- Operating Temperature: 0 °C ~ 40 °C (32°F ~ 104°F)
- Operating Humidity: 10%~90%RH, Non-condensing

Specifications are subject to change without notice. All brands and product names are trademarks or registered trademarks of their respective holders.
©2020 TP-Link

www.tp-link.com