



# Kasa Smart Light Bulb

Dimmable



KL110



Dimmable



No Hub  
Required



Remote Control



Voice Control



Set Scenes

# Highlights

## Dimmable Light

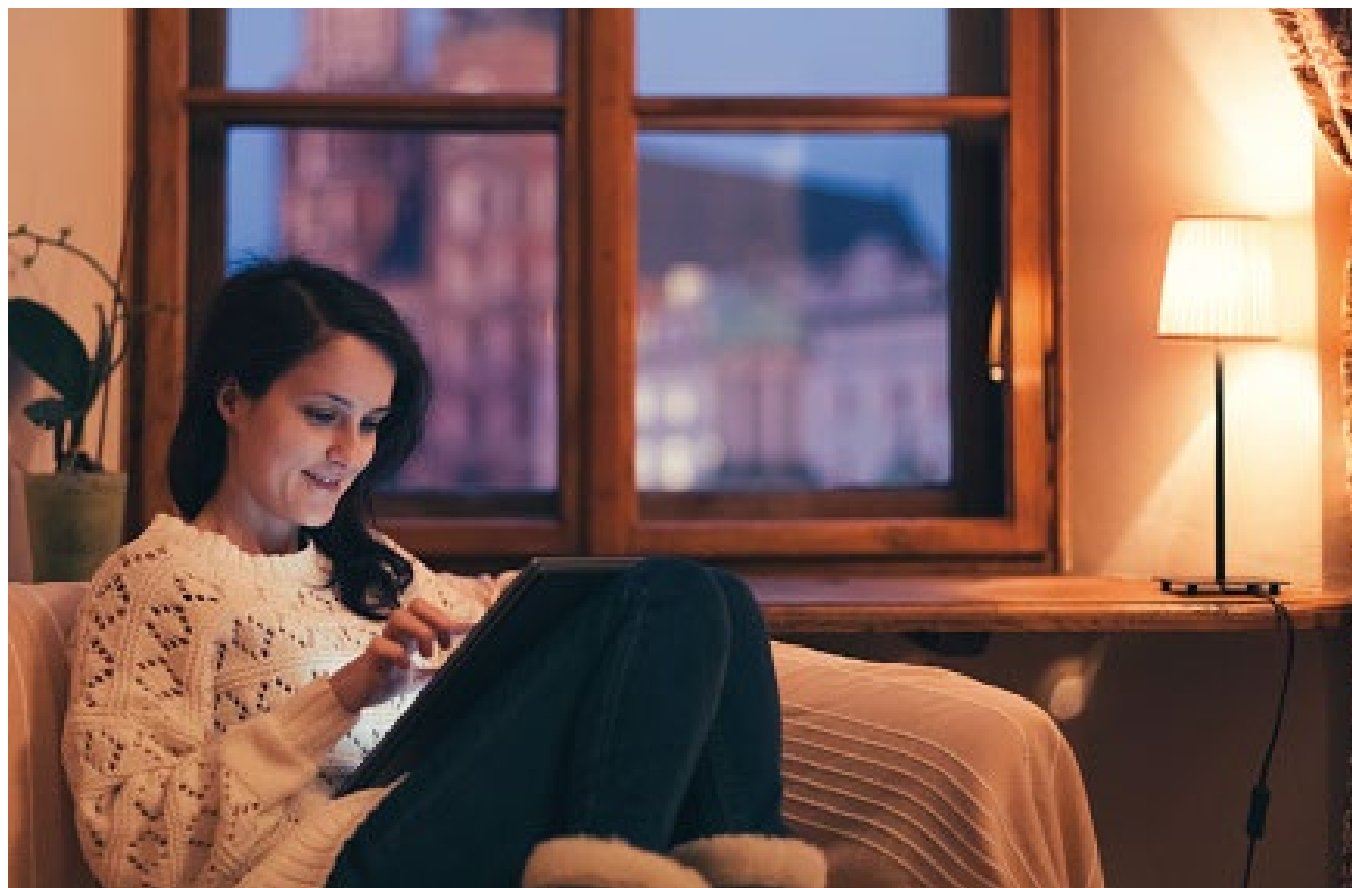
With a dimming range from 1% -100%, the Kasa bulb makes it easy to set the right brightness for any mood or activity. Perfect for bedrooms, living rooms and other rooms where dimming is needed. It can be controlled from anywhere with the Kasa app or with simple voice control via Google Assistant, Alexa or SmartThings.



\*The app screen depicted is for visual reference only and does not necessarily represent actual product operation or app appearance.  
\*Alexa, Google Assistant, and SmartThings are not available in all languages and countries.

## Multi-scene

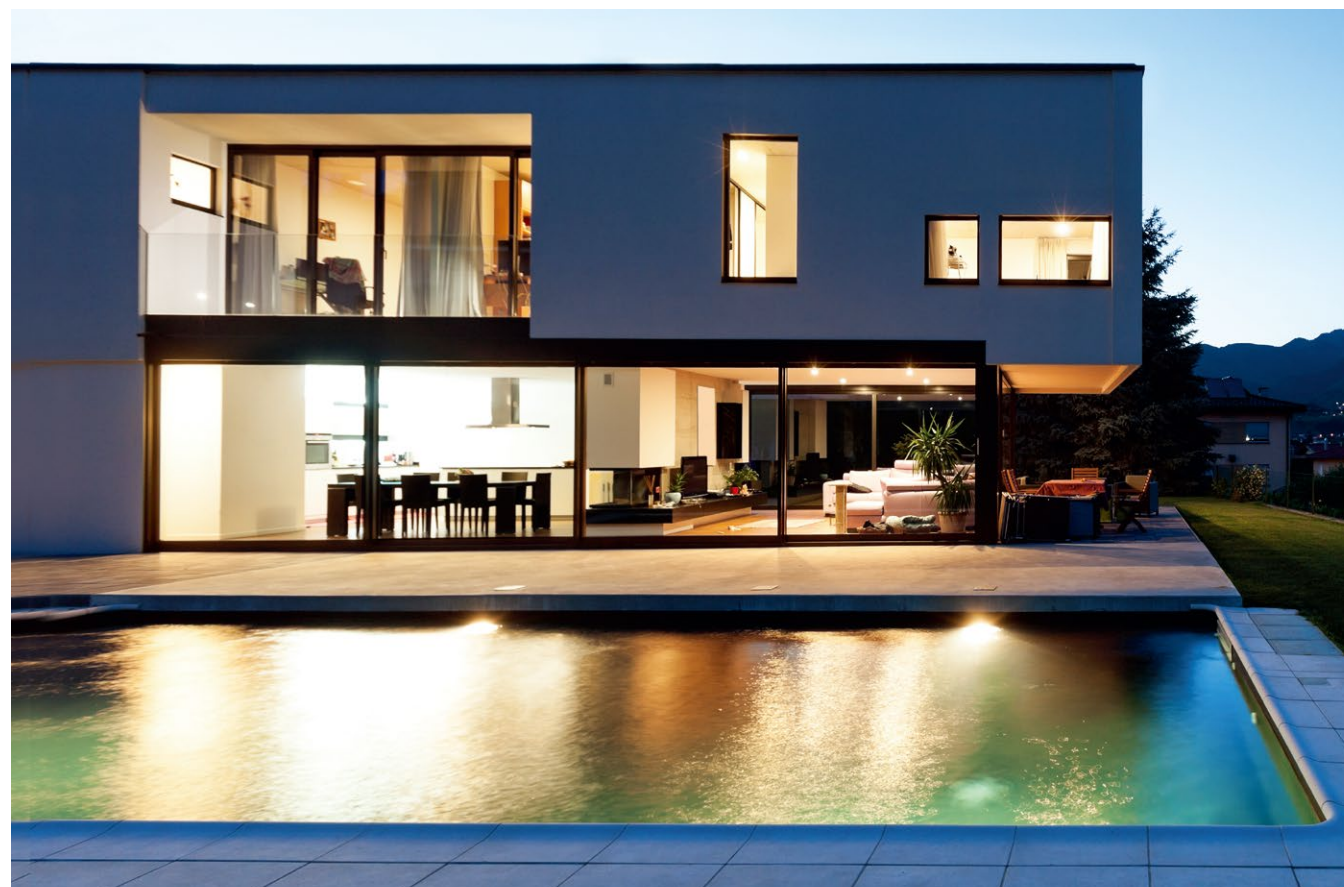
Create multiple scenes like theater scene, party scene or sleeping scene with different settings for various occasions, and tap yours when you want the light your way.



# Highlights

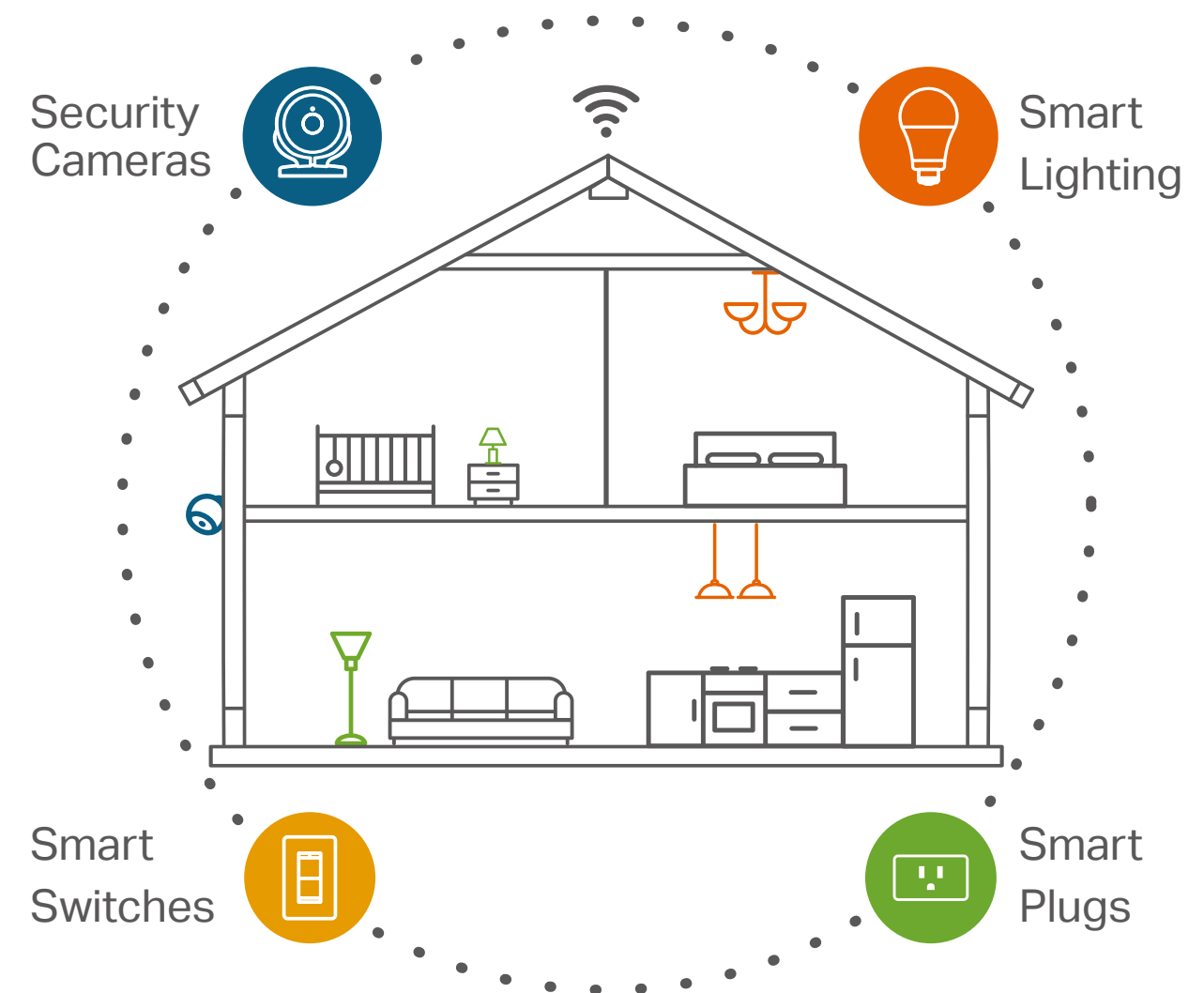
## Energy Saving

Reduce energy use up to 80% without losing brightness or quality.



## Your Home. One App.

Turn your home into a true smart home with Kasa Smart. Automate your lights and appliances with smart plugs, bulbs, and switches. Secure your home with Kasa Cameras. Control it all from the Kasa Smart app.



Learn more at [KasaSmart.com](https://KasaSmart.com)



# Features



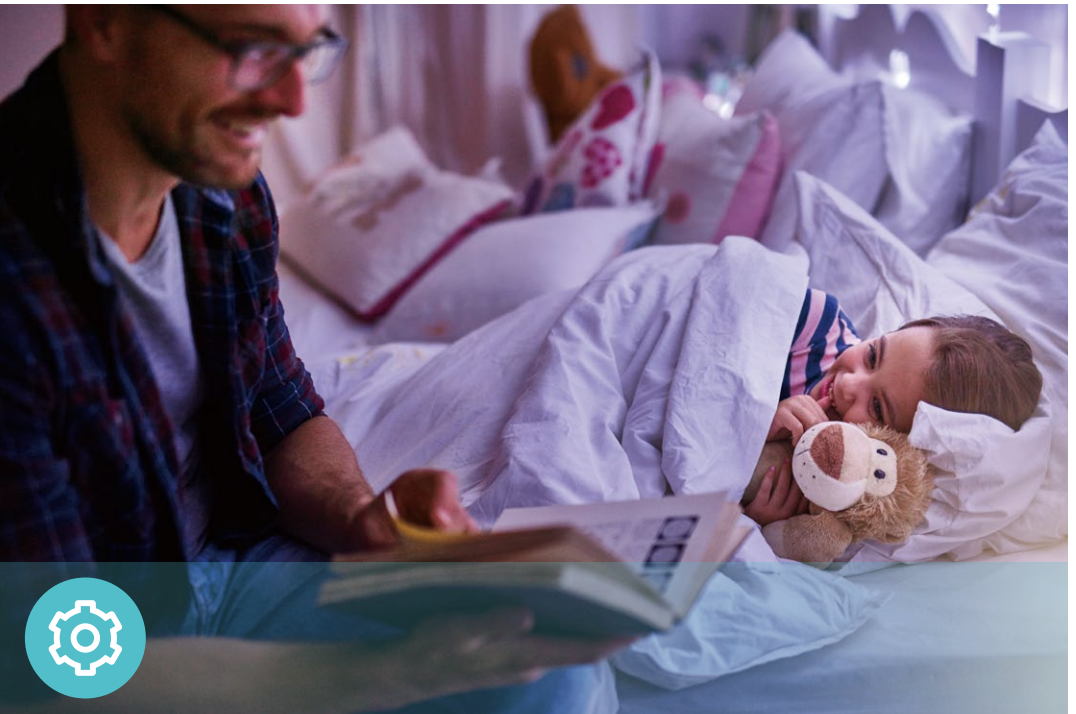
## Ease of Use

- No Hub Required – Connect to your home’s secure Wi-Fi network. No need for a hub or extra equipment
- Remote Control – Control your smart light bulb from anywhere with your smartphone using the free Kasa Smart app
- Scheduling – Set schedules to turn on/off the smart bulbs at any chosen time for your convenience
- Multi-scene – Combine all of your Kasa Smart devices in a Scene and control them with a single button
- Grouping - Use Grouping to combine your Kasa devices with other Kasa Smart devices for seamless control with one single tap on your smartphone
- Smart Actions – With Smart Actions, your Kasa devices can work together to create a smarter smart home



## Compatibility

- Works with Vocie Assistants – Use simple voice commands with Alexa, Google Assistant or SmartThings
- Compatible with Android, iOS – The free Kasa app lets you run smart bulbs from any Android (5.0 and higher) or iOS (iOS 10 and higher) devices



## Lighting

- Dimmable Light – Dimming flexible 800 lumens brightness\* white light with color temperature of 2700 K for customized lighting
- Durable Bulb – Provide you stable and customized lighting for up to 22.8 years\*\*

\*60W equivalent

\*\*Based on 3hrs/day

# Specifications

## Working Status

- Typical Lumen Output: 800 lm
- Input Power (Actual power draw in Watts): 9 W
- Color Temperature: 2700 K
- Rated Input Voltage: 120V~ 60 Hz
- Beam Angle: 220 Degrees typical
- Dimmable: Yes (via app and cloud only)

## Network

- Secured home Wi-Fi connection required
- Free Kasa Smart app and account required
- Wi-Fi Protocol: IEEE 802.11b/g/n
- Wi-Fi Frequency: 2.4 GHz
- System Requirements: Android 5.0 or higher, iOS 10 or higher

## General

- Package Contents:
  - Kasa Smart Light Bulb
  - Quick Start Guide
- Lamp Base: A19 bulb, E26 fitting
- Weight: 0.176 lb (80g)
- Dimensions: 2.36 x 4.65 in (60 x 118 mm)
- Certifications: FCC, UL, DoE, California Energy Commission (CEC), Title 20 Compliant
- Operating Temperature: -15 °C~ 40 °C (5 °F ~ 104 °F )
- Operating Humidity: 10%~90% RH, Non-condensing
- Compatible with regular light switches. Do not use with dimmers

© 2020 TP-Link

This device complies with part 15 of the FCC Rules. Operation is subject to the following two conditions: (1) This device may not cause harmful interference, and (2) this device must accept any interference received, including interference that may cause undesired operation. App Store is a service mark of Apple Inc. Google is a trademark of Google LLC. Amazon, Alexa and all related logos are trademarks of Amazon.com, Inc. or its affiliates. The Works with SmartThings words and logo are trademarks of Samsung Electronics Co. Ltd.

**www.tp-link.com**