



♥ END-CUSTOMER GENERAL PROFILE

Name: MANGO.CITY

Industry: Retail

Capacity: 20,000m², 5 Floors

Location: Long'an District, Anyang,
Henan, China

♥ Used Products

- Turret Network Cameras
- Bullet Network Cameras
- Network Video Recorder (NVRs)
- Jetstream Switches
- Access Points (APs)

♥ BACKGROUND

MANGO.CITY is a significant shopping mall in Anyang, Henan. The mall covers 20,000 m² across five floors and serves the community with many stores alongside entertainment and education facilities.

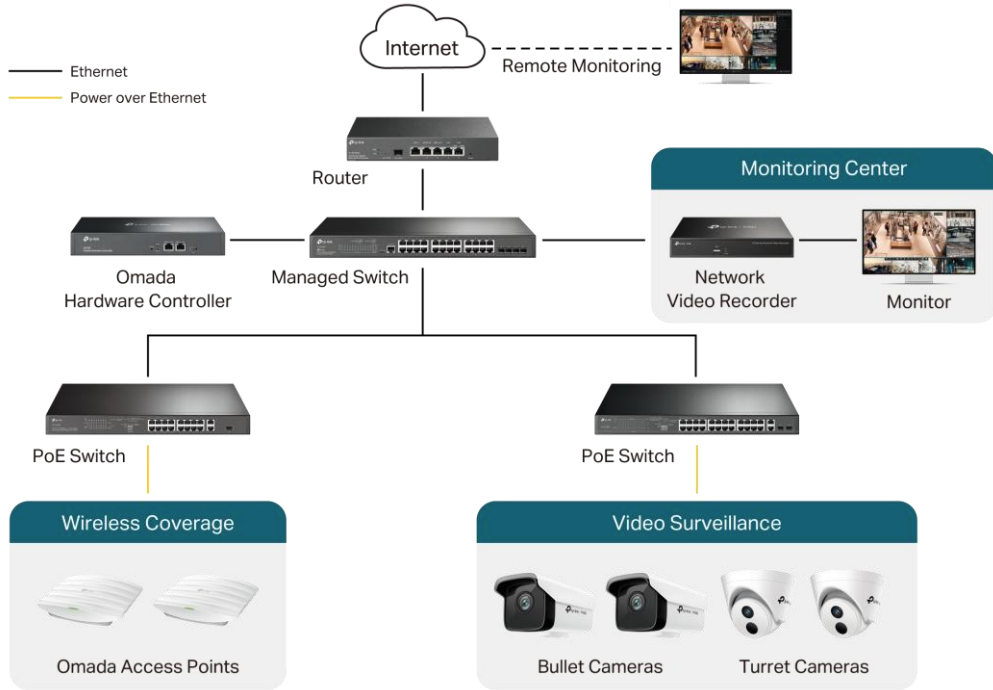
♥ CHALLENGE & SOLUTION

MANGO.CITY shopping mall sought a solution that integrated surveillance and networking. They had the following requirements:

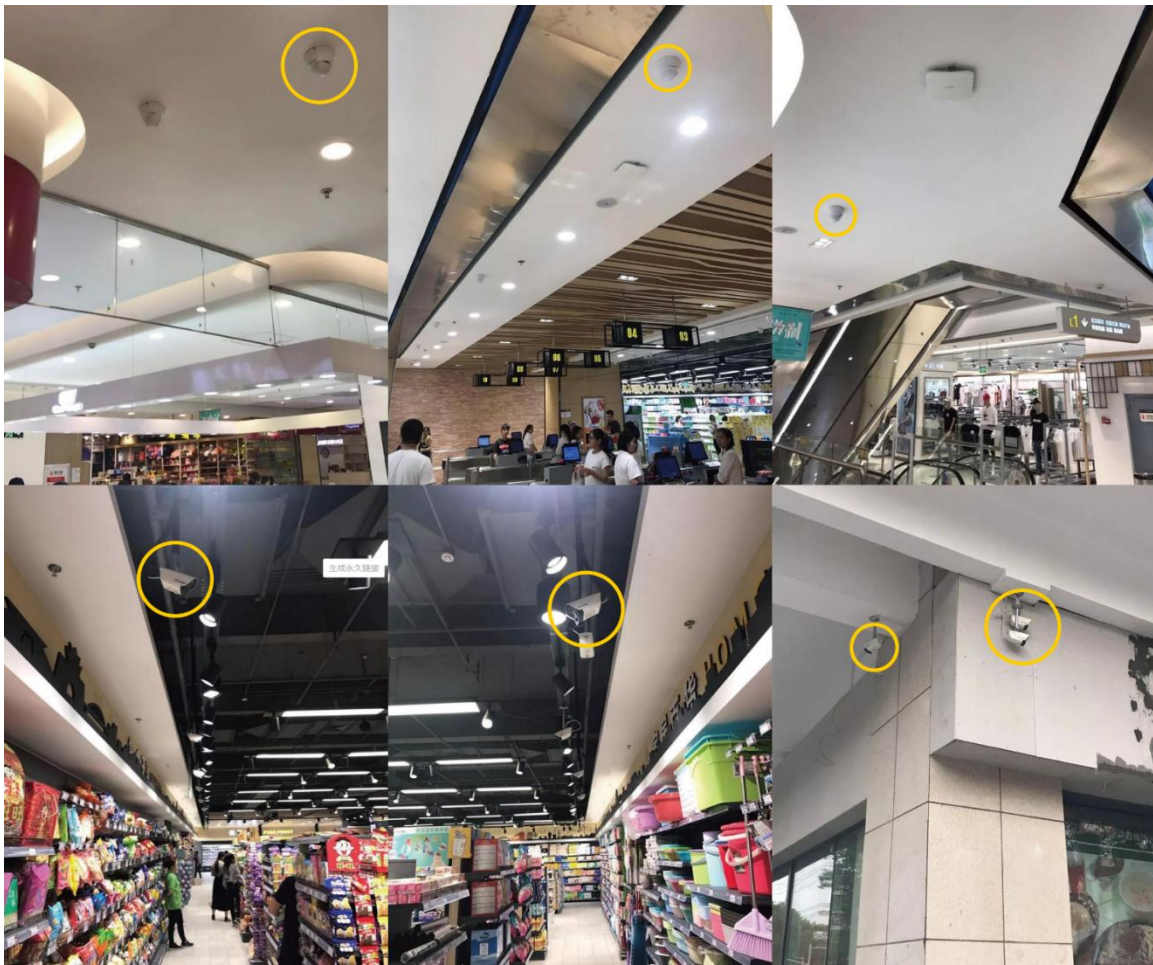
Challenges/Requirements	Solutions
<ul style="list-style-type: none"> • Increased customer flow brings greater security uncertainties, creating higher video 	<ul style="list-style-type: none"> • High resolution brings higher security. Our solution provides high-resolution cameras (3MP and above) to record all activities.

<p>surveillance requirements.</p>	<ul style="list-style-type: none"> Intelligent motion detection alerts security personnel automatically when installed in pre-determined locations, such as the entrances, perimeter, and parking lot.
<ul style="list-style-type: none"> Some objects are difficult to recognize at night by black-and-white images. 	<ul style="list-style-type: none"> Powerful video enhancement provides clear and vivid images at night, including Night Vision and Smart IR.
<ul style="list-style-type: none"> Minimal wiring would maintain a high-quality architectural layout and design. 	<ul style="list-style-type: none"> The co-location of PoE cameras with TP-Link PoE switches meant that one Ethernet cable would supply power and transmit data to each camera simultaneously. The compact cameras blend in perfectly with the mall's interior decoration.
<ul style="list-style-type: none"> Video footage must be stored for a long time to satisfy regulatory requirements. 	<ul style="list-style-type: none"> Smart video coding (H.265+/H.264+) saves high-quality footage while taking up less space. NVR supports large storage disks (up to 10TB for each HDD).
<ul style="list-style-type: none"> World-class wireless network to service an ever-growing customer base. 	<ul style="list-style-type: none"> Dual-band APs and Seamless Roaming support a super-fast, uninterrupted wireless network. Portal Authentication ensures WiFi security to control access to the network.
<ul style="list-style-type: none"> Professional monitoring systems are required for both security personnel and system administrators. 	<ul style="list-style-type: none"> Administrator Office can access up to 64 video channels simultaneously with the Security Manager installed on the computer. Staff in the Security Office have a multi-channel live view on the monitors connected to NVR.

♥ Topology



♥ Device Deployment



♥ **Related Recommended Products**



VIGI C300P



VIGI C400P



VIGI NVR1016H