

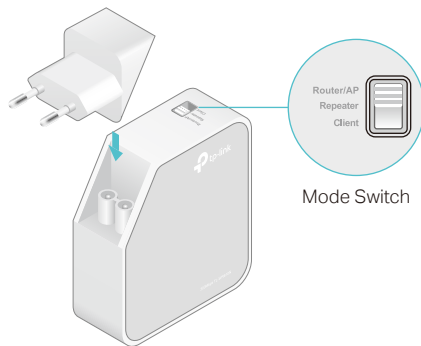
Quick Installation Guide

300Mbps Wi-Fi Pocket Router/AP/
TV Adapter/Repeater

EAC *TL-WR810N (European version) is used for demonstration in this QIG.

Operation Mode

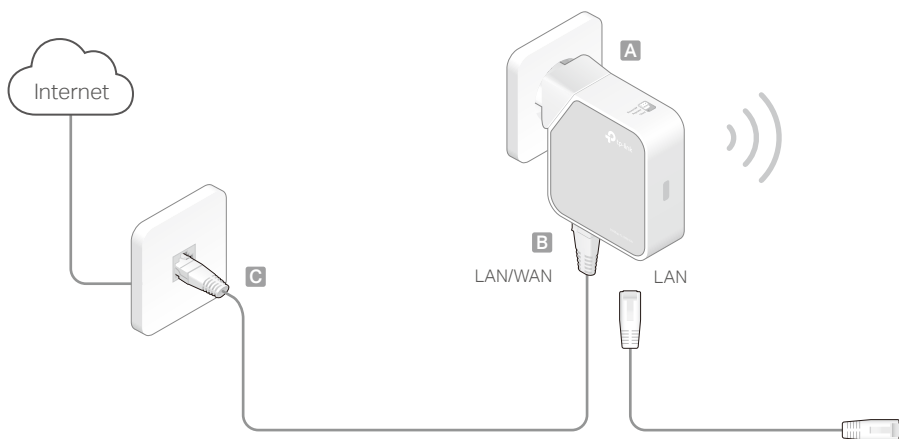
Install the plug and choose the operation mode of the router as needed.



Operation Modes	Application
Standard Wireless Router	To share a wired (Ethernet) connection to wireless devices, when in a hotel room, small office and so on.
Access Point	To transform an existing wired (Ethernet) network to a wireless one.
Repeater	To extend the range of an existing Wi-Fi network.
Client	To enable your wired device (such as Blu-ray® players, smart TVs, or game consoles) to connect to a Wi-Fi network.

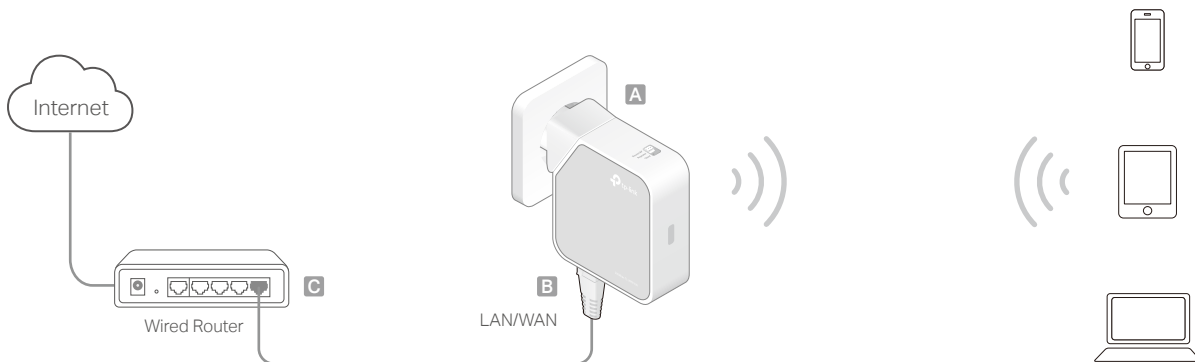
Configure the Router

• Standard Wireless Router



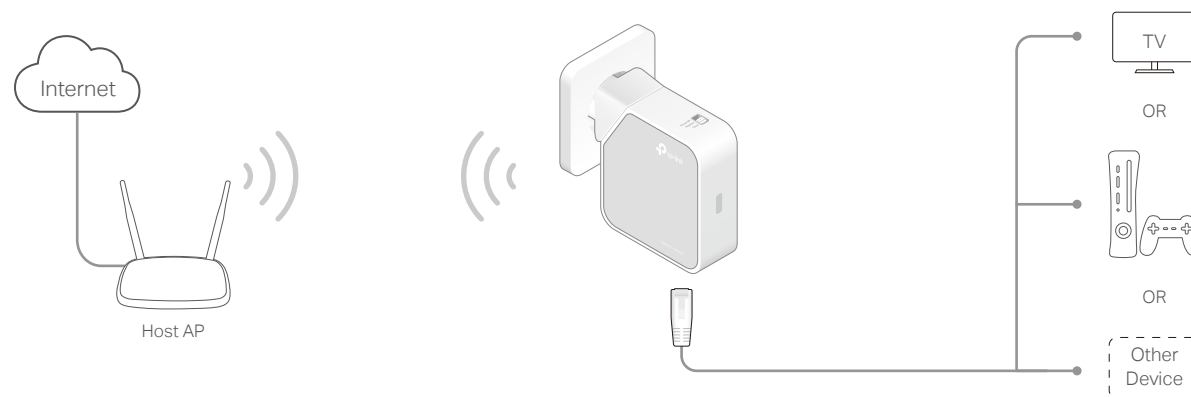
- 1 Switch the Operation Mode to **Router/AP** and connect the hardware according to Step **A** to **C** in the left diagram.
- 2 Connect your device to the router wirelessly or via an Ethernet cable. The **SSID (Network Name)** and **Wireless password** are on the router's label.
- 3 Launch a web browser and type <http://tplinkwifi.net> in the address bar. Enter **admin** (in lowercase) for both username and password to log in.
- 4 Click **Next** to start the Quick Setup. Select **Standard Wireless Router** and click **Next**.
- 5 Select the **WAN Connection Type** and follow the instructions. When using the router in a hotel room or a small office, select **Dynamic IP**.
Note: If the router is successfully connected to internet, this step will be skipped.
- 6 On the **Wireless** page, either customize your **Wireless Network Name** and **Wireless Password** or keep the default ones, and then click **Next**.
- 7 Click **Finish** to complete the configuration.

• Access Point



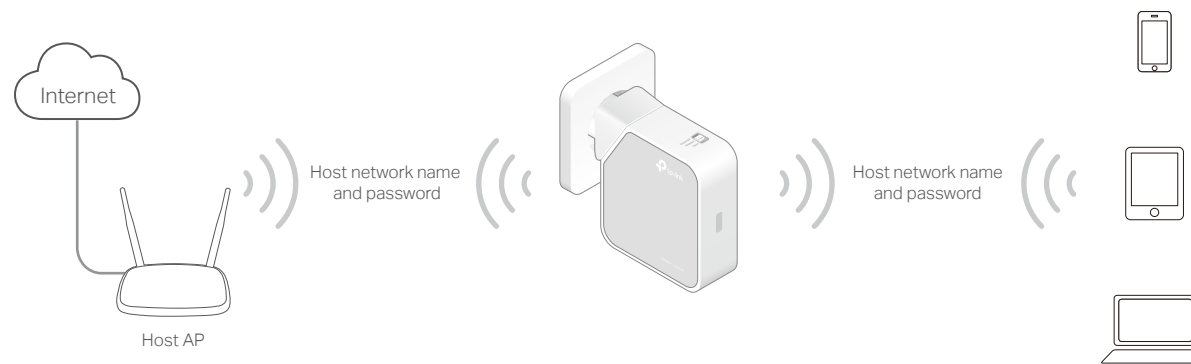
- 1 Switch the Operation Mode to **Router/AP** and connect the hardware according to Step **A** to **C** in the left diagram.
- 2 Connect your device to the router wirelessly or via an Ethernet cable. The **SSID (Network Name)** and **Wireless password** are on the router's label.
- 3 Launch a web browser and type <http://tplinkwifi.net> in the address bar. Enter **admin** (in lowercase) for both username and password to log in.
- 4 Click **Next** to start the Quick Setup. Select **Access Point** and click **Next**.
- 5 Either customize your **Wireless Network Name** and **Wireless Password** or keep the default ones, and then click **Next**.
- 6 Select the LAN IP type of the router or leave the default setting **Smart IP** for most cases, and then click **Next**.
- 7 Click **Reboot** to complete the configuration.

• Client (TV Adapter)



- 1 Switch the Operation Mode to **Client** and plug the router into an electrical outlet within the range of your host AP.
- 2 Connect your device to the router via an Ethernet cable.
- 3 Launch a web browser and type <http://tplinkwifi.net> in the address bar. Enter **admin** (in lowercase) for both username and password to log in.
- 4 Click **Quick Setup** on the left panel and click **Next** to start.
- 5 Click **Survey** to find your host network and click **Connect**. Enter the host network's password in the **Wireless Password** field and click **Next**.
- 6 Select the LAN IP type of the router or leave the default setting **Smart IP** for most cases, and then click **Next**.
- 7 Click **Finish** to complete the configuration.
- 8 Connect your wired-only device to the router's LAN or LAN/WAN port using an Ethernet cable.

• Repeater



- 1 Switch the Operation Mode to **Repeater** and plug the router into an electrical outlet next to your host AP.
- 2 Connect your device to the router wirelessly or via an Ethernet cable. The **SSID (Network Name)** and **Wireless password** are on the router's label.
- 3 Launch a web browser and type <http://tplinkwifi.net> in the address bar. Enter **admin** (in lowercase) for both username and password to log in.
- 4 Click **Quick Setup** on the left panel and click **Next** to start.
- 5 Click **Survey** to find your host network and click **Connect**. Enter the host network's password and click **Next**.
- 6 Select the LAN IP type of the router or leave the default setting **Smart IP** for most cases, and then click **Next**.
- 7 Click **Finish** to complete the configuration.
- 8 Relocate the router about **halfway** between your host AP and the Wi-Fi dead zone.

Note: The extended network shares the same **SSID (network name)** and **password** as those of your host network.

FAQ (Frequently Asked Questions)

Q1. What can I do if I cannot access internet?

- If using a cable modem, unplug the Ethernet cable and reboot the modem. Wait until its LED is on and stable, and then reconnect the Ethernet cable to the modem.
- If you're in a hotel room or on a trade show, the internet may be limited and requires that you authenticate for the service or purchase the internet access.
- If your internet access is still not available, contact TP-LINK Technical Support.

Q2. How do I restore the router to its factory default settings?

- With the router powered on, press and hold the Reset button until the LED starts blinking, and then release the button.

Q3. What can I do if I forgot my web management password?

- Refer to FAQ > Q2 to reset the router, and use the default **admin** (all lowercase) for both username and password to log in.

Q4. What can I do if I forgot my wireless network password?

- If you have not changed the default Wireless Password, it can be found on the label of the router.
- Connect a computer to the router via an Ethernet cable. Log in to the web management page, and go to **Wireless > Wireless Security** to retrieve or reset your wireless password.

Q5. What can I do if my wireless signal is unstable or weak?

It may be caused by too much interference.

- Change your wireless channel to a different one.
- Choose a location with less obstacles that may block the signal between the router and the host AP. An open corridor or a spacious location is ideal.
- Move the router to a new location away from Bluetooth devices and other household electronics, such as cordless phones, microwaves, and baby monitors, to minimize signal interference.
- When in Repeater mode, the ideal location to place the router is about halfway between your host AP and the Wi-Fi dead zone. The location you choose must be within the range of your existing host network.