



# Auranet

## CAP300-Outdoor

### Installation Guide

300Mbps Wireless N Outdoor Access Point

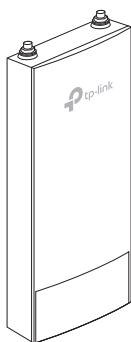


# Contents

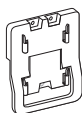
Overview .....	1
Typical Network Topology .....	4
Lightning and ESD Protection .....	5
Hardware Installation .....	6
Mount CAP .....	7
Connect Cables .....	9
Power On .....	10
Software Configuration .....	11

# Overview

## Package Contents



CAP



Mounting Bracket



M3x28 Plastic Wall Anchors(Qty.3)



Antennas (Qty.2)



M3x20 Self-tapping Screws (Qty.3)



Waterproof Rubber Insert

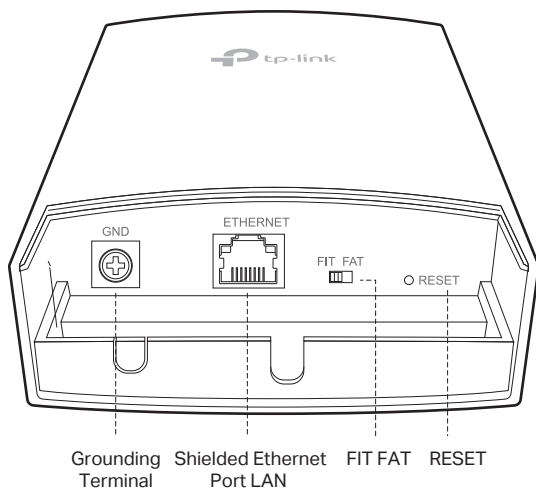


Installation Guide



Metal Strap

# Panel Layout



## GND

The Grounding Terminal is used for lightning and ESD protection. Use a grounding cable to connect the Grounding Terminal to earth ground.

## ETHERNET

The port is used to connect to a PSE (Power Sourcing Equipment), such as a PoE switch, for both data transmission and Power.

## FIT FAT

The FIT/FAT switch is used to toggle the CAP's working mode. The toggling of the mode will reboot the CAP.

In FIT mode, APs can be centrally managed by TP-Link's wireless controller. The default FIT mode is used when you want to deploy a large wireless network.

In FAT mode, you can log in to CAP's webpage to manage the CAP alone. The FAT mode is used in a small wireless network. The AP cannot be managed by wireless controller in FAT mode.

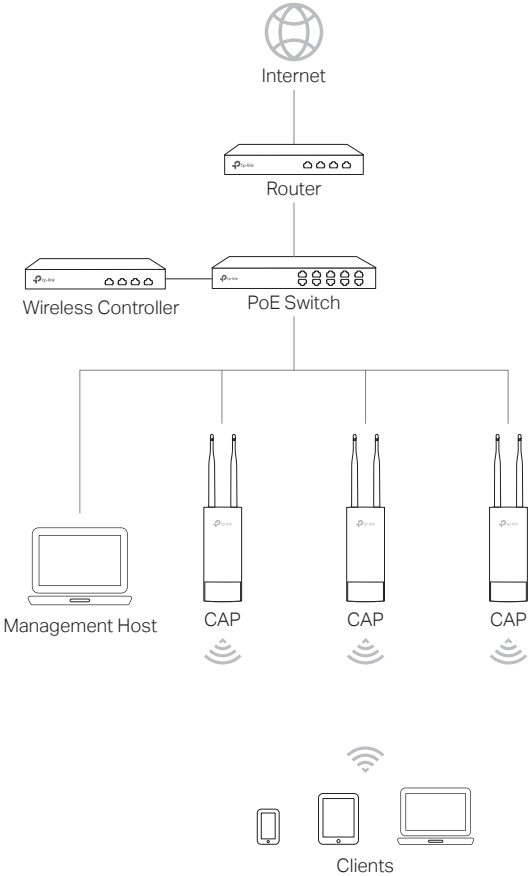
## RESET

With the device powered on, press and hold the button for about 8 seconds until the LED flashes red, then release the button. The device will restore to factory default settings.

# SYS LED Explanation

LED Status	Indication
Flashing green, red and yellow before remaining green	The device is initializing.
Flashing green twice	Initialization is completed.
Solid green	The device is working properly or the connection between the device and the wireless controller is established.
Flashing red	System errors. RAM, Flash, Ethernet, WLAN or firmware may be malfunctioning.
Flashing yellow	Firmware update is in progress. Do not disconnect or power off the device.
Double-flashing red, green, yellow	The device is being reset to its factory default settings.
Flashing green (FIT mode only)	The device is not connected to a wireless controller.

# Typical Network Topology



The management host can be in the same or different network segment with the CAPs.

# Lightning and ESD Protection

Before mounting CAP, you should consider Lightning and ESD Protection to ensure safety.

Proper grounding is extremely important for outdoor devices. There are two effective techniques for grounding the outdoor CAP:

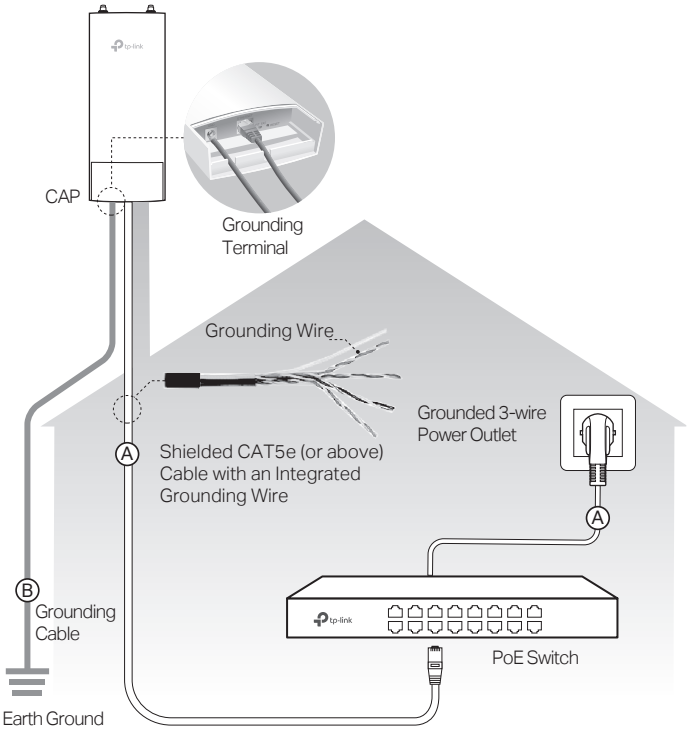
## **Option A**

Use a shielded CAT5e (or above) cable with an integrated grounding wire for connection.

## **Option B**

If you have the standard CAT5e cable for the connection, use a separate grounding cable to connect the Grounding Terminal (GND) to earth ground.





# Hardware Installation

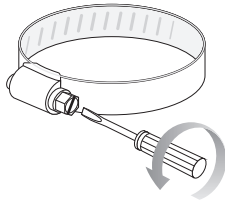
## Mount CAP

The CAP can be pole-mounted or wall-mounted.

## Option 1: Pole Mounting

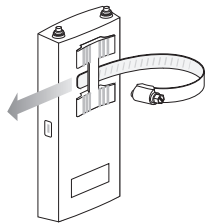
### Step 1:

Loosen and completely remove the end of the metal strap by turning the captive screw counterclockwise with a flathead screwdriver.



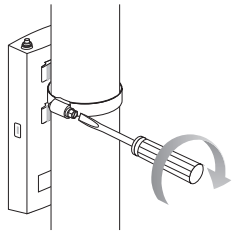
### Step 2:

Lead the end of the metal strap through the back of the CAP.



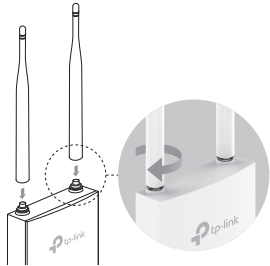
### Step 3:

Position the CAP and wrap the metal strap around the pole. Feed the end back through the screw-block and turn the screw clockwise to tighten the metal strap using a flathead screwdriver until the CAP is secure.



### Step 4:

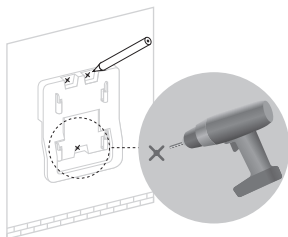
Connect the antennas to the CAP.



## Option 2: Wall Mounting

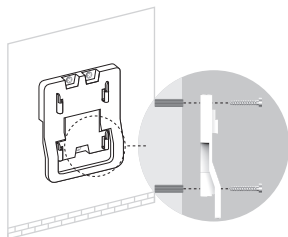
### Step 1:

Place the mounting bracket in the position you require. Mark three positions for the screw holes. Drill three 6mm (in diameter) holes at the marked positions.



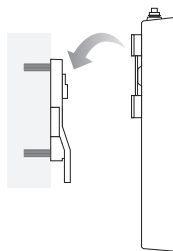
### Step 2:

Insert the plastic wall anchors into the 6mm holes. Align the bracket to the plastic wall anchors and drive the self-tapping screws into the anchors through the bracket.



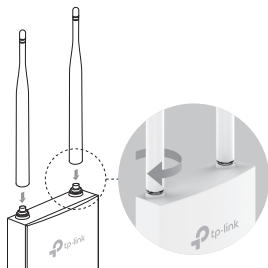
### Step 3:

Align the mounting tabs on the back of the CAP with the four slots of the mounting bracket. Push and slide the CAP downward until it locks into place.



### Step 4:

Connect the antennas to the CAP.



# Connect Cables

## Step 1:

Firmly grasp the rear of the interface cover and pull it downward.



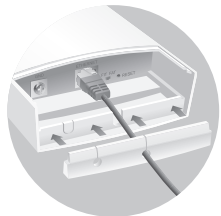
## Step 2:

Use an adequate Ethernet cable to connect the LAN port. Shielded CAT5e (or above) cable with an integrated ground wire is recommended.



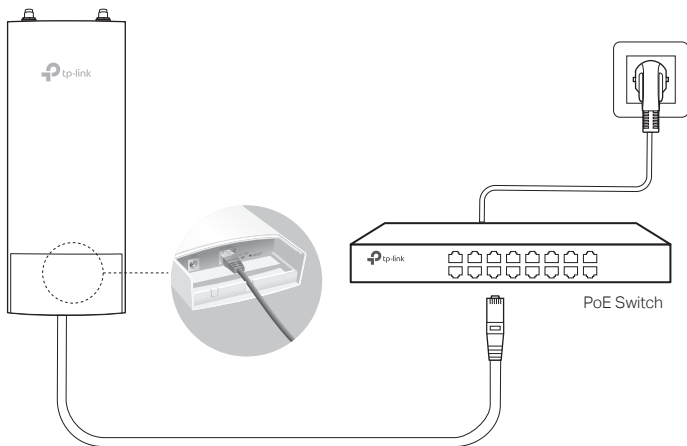
## Step 3:

Affix the waterproof rubber insert to the underside of the device for waterproofing and replace the cover until it firmly locks into place.



# Power On

Connect the CAP to a PSE device (such as a PoE switch) as follows:



## Step 1:

Connect the Ethernet cable from the CAP to the PoE port of the PoE switch.

## Step 2:

Connect the power cord to the power port on the PoE switch and plug it into a power outlet.

# Software Configurations

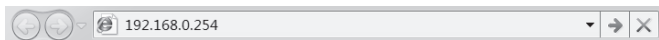
## In FIT Mode

In FIT mode, CAP should be managed by the wireless controller. Please refer to the Wireless Controller User Guide to learn more information about configuring and using the controller.

Note: The IP address of the wireless controller must be reachable for the CAPs in the network.

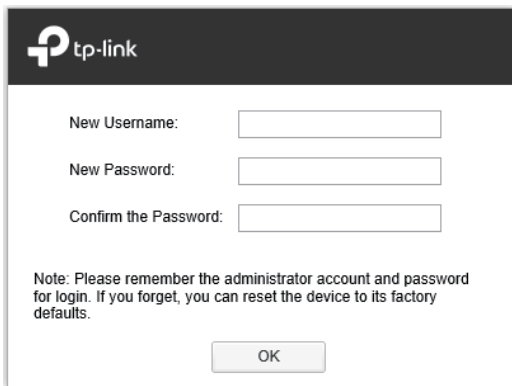
## In FAT Mode

- 1 Launch a web browser and enter 192.168.0.254 in the address bar.



Note: To log in to the device, the IP address of your PC should be set in the same subnet addresses of the device. The IP address is 192.168.0.x ("x" is any number from 1 to 253). Subnet Mask is 255.255.255.0.

- 2 Create a new username and password for login, and then click OK.

A screenshot of the TP-Link web interface. At the top left is the TP-Link logo. Below it, there are three input fields for "New Username:", "New Password:", and "Confirm the Password:". Below the input fields is a note: "Note: Please remember the administrator account and password for login. If you forget, you can reset the device to its factory defaults." At the bottom center is an "OK" button.

- 3 The webpage will be shown. Click the menu bar to configure the corresponding parameters.

Navigation tabs: **Status** | **Wireless** | **Network** | **System**

---

**Device Information** | **Wireless Parameter**

Hardware Version: CAP300-Outdoor v1.0	Wireless Mode: 802.11b/g/n
MAC Address: 00-14-78-87-43-96	Channel Bandwidth: Auto
IP Address: 192.168.0.254	Channel Frequency: 13
System Time: 2014-01-01 00:06:33	WDS Status: Disabled
Running Time: 0 days 00:06:35	

---

**Wireless Service**

ID	SSID	Network Type	Wireless Password	Client Number	Status	Settings
1	TP-LINK_2_4G_874396	Guest Network		0	Enable	

---

**Wireless Client**

ID	MAC Address	Connected SSID	Connection Time
Client list is empty.			



For technical support and other information, please visit:  
<http://www.tp-link.com/support>, or simply scan the QR code.



The products of TP-Link partly contain software code developed by third parties, including software code subject to the GNU General Public License ("GPL"). As applicable, the terms of the GPL and any information on obtaining access to the respective GPL Code used in TP-Link products are available to you in GPL-Code-Centre under (<http://www.tp-link.com/en/support/gpl/>). The respective programs are distributed WITHOUT ANY WARRANTY and are subject to the copyrights of one or more authors. For details, see the GPL Code and other terms of the GPL.