

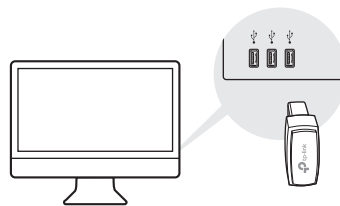
## AC450 Wireless Nano USB Adapter



For Mac OS X

### 1 Connect to a Computer

Insert the adapter into a USB port on your computer directly.



### 2 Install Driver and Utility

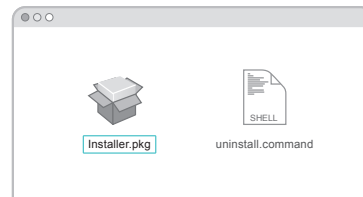
a. Download the driver and utility from this product's Support page at [www.tp-link.com](http://www.tp-link.com).

Note:

If your computer has a CD drive, you can also run the included CD to install the driver and utility.

b. Unzip the downloaded folder and run the **Installer.pkg**.

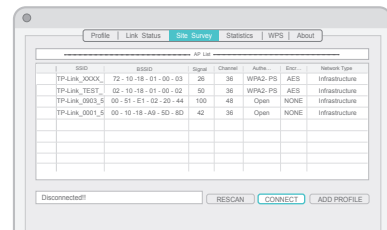
c. Follow the instructions to complete the installation.



### 3 Join a Wireless Network

a. Select the **Site Survey** tab of the pop-up utility window.

b. Select your Wi-Fi network and click **CONNECT**. The connection status can be viewed on the Link Status screen.

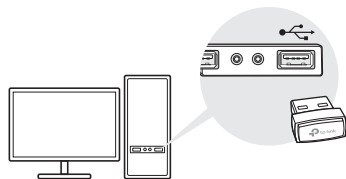




## For Windows

### 1 Connect to a Computer

Insert the adapter into a USB port on your computer directly.



Note:  
In Windows XP, a **Found New Hardware Wizard** window will appear when the adapter is detected. Please click **Cancel**.

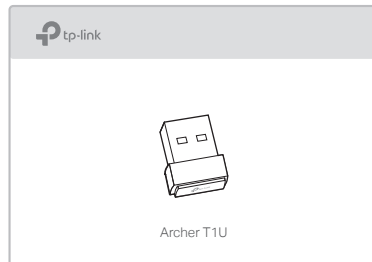
### 2 Install Driver

a. Insert the CD and run the **Autorun.exe**.

Note:  
You can also download the driver from this product's Support page at [www.tp-link.com](http://www.tp-link.com).

b. Select **Archer T1U** and follow the instructions to complete the installation.

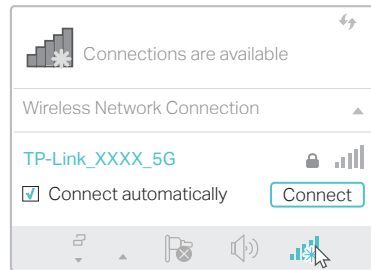
Note:  
If you can't install the driver successfully, disable the antivirus software and firewall, then try again.



### 3 Join a Wireless Network

a. Click the network icon ( or ) on the taskbar.

b. Select your Wi-Fi network, click **Connect** and enter the password when prompted.



For detailed instructions, please refer to the User Manual from this product's Support page at [www.tp-link.com](http://www.tp-link.com).



For technical support and other information, please visit <http://www.tp-link.com/support>, or simply scan the QR code.

This USB Adapter can only be powered by computers that comply with Limited Power Source (LPS).



©2017 TP-Link