

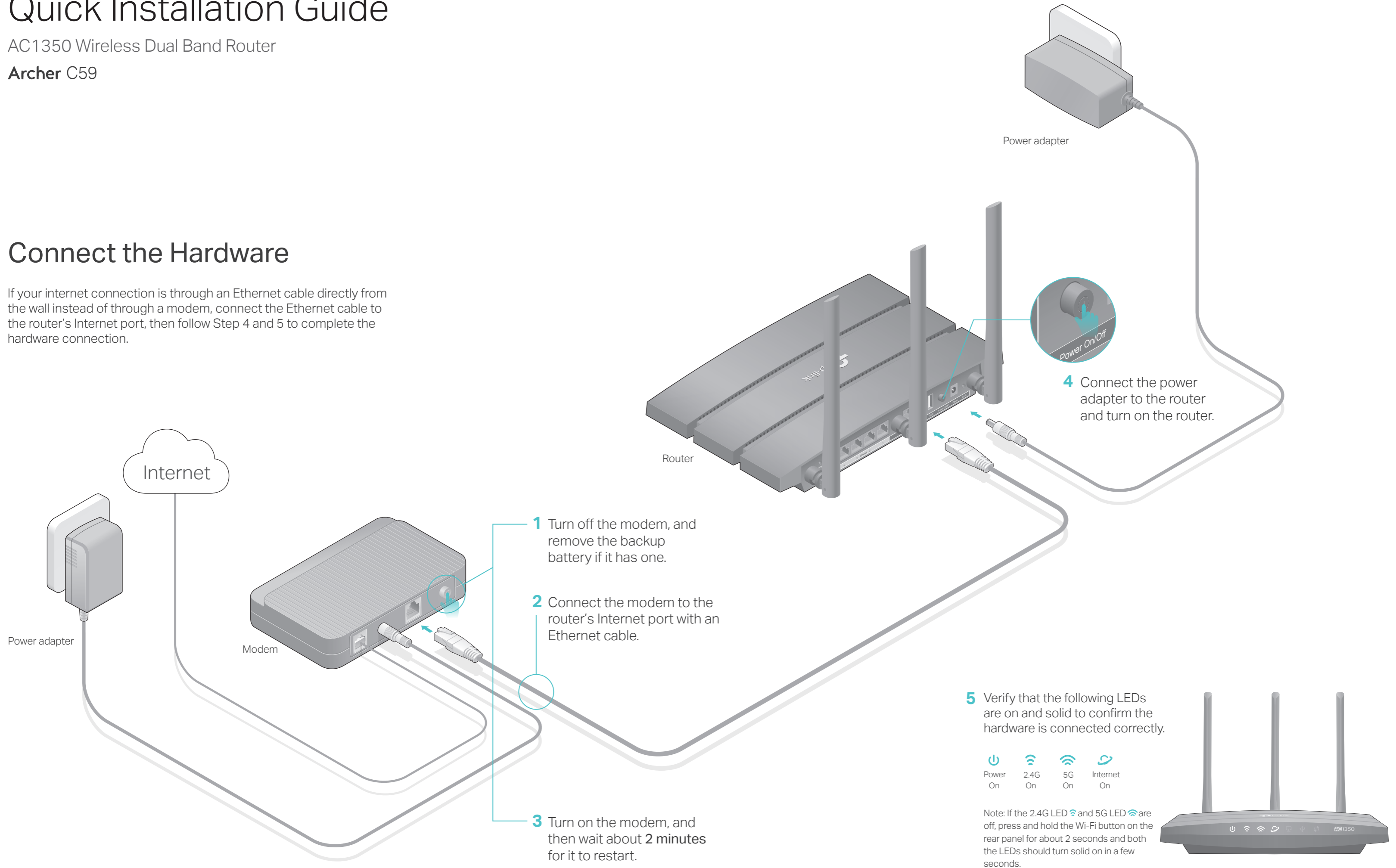
# Quick Installation Guide

AC1350 Wireless Dual Band Router

Archer C59

## Connect the Hardware

If your internet connection is through an Ethernet cable directly from the wall instead of through a modem, connect the Ethernet cable to the router's Internet port, then follow Step 4 and 5 to complete the hardware connection.



- 1 Turn off the modem, and remove the backup battery if it has one.
- 2 Connect the modem to the router's Internet port with an Ethernet cable.
- 3 Turn on the modem, and then wait about 2 minutes for it to restart.
- 4 Connect the power adapter to the router and turn on the router.
- 5 Verify that the following LEDs are on and solid to confirm the hardware is connected correctly.

- Power On
- 2.4G On
- 5G On
- Internet On

Note: If the 2.4G LED and 5G LED are off, press and hold the Wi-Fi button on the rear panel for about 2 seconds and both the LEDs should turn solid on in a few seconds.



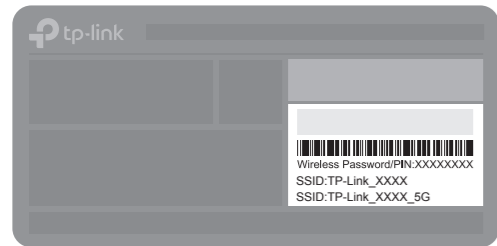
# Configure the Cloud Router

## Method ONE: Via TP-Link Tether App

### 1. Download the Tether app.



### 2. Connect your smartphone to the router.



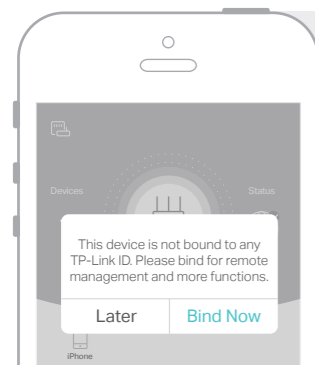
The default wireless network names (SSIDs) and password are printed on the label at the bottom of the router.

### 3. Connect the router to the internet.



- A** Launch the Tether app. Select Archer C59 from the local device list.
- B** Create a login password and follow the steps to connect to the internet.

### 4. Register the TP-Link Cloud service.



To enjoy a more complete service from TP-Link, tap **Bind Now** when prompted and follow the instructions to register and bind a TP-Link ID to your cloud router.

With TP-Link ID, you can conveniently manage your home network from your smartphone or tablet via the Tether app, no matter where you find yourself.

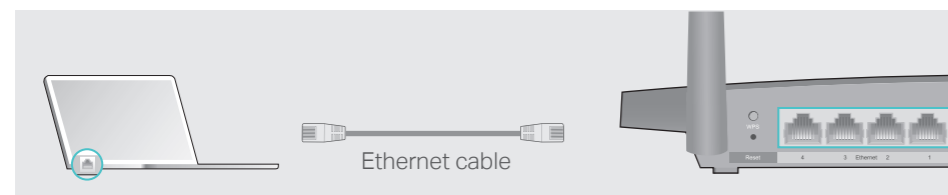
😊 Enjoy the internet!

## Method TWO: Via Web Browser

### 1. Connect your device to the router (wired or wireless).

#### • Wired

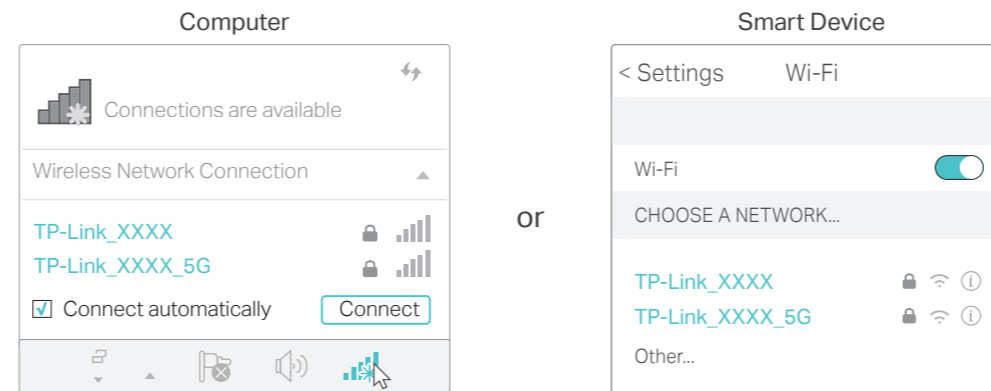
Turn off the Wi-Fi on your computer and connect the devices as shown below.



#### • Wireless

- a** Find the SSID and wireless password printed on the label of the router.

- b** Click the network icon of your computer or go to Wi-Fi settings of your smart device, and then select the SSID to join the network.



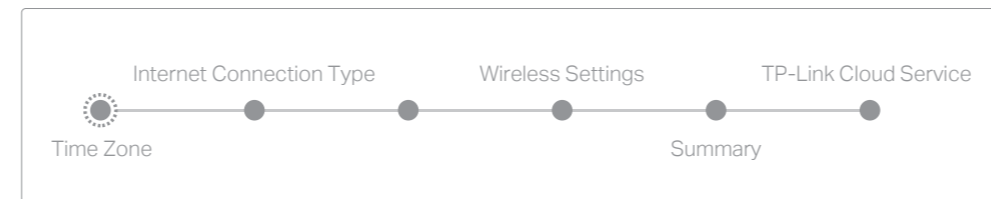
### 2. Connect the router to the internet.

- A** Launch a web browser, and enter <http://tplinkwifi.net> or <http://192.168.0.1> in the address bar. Create a login password and then click **Let's Get Started**.

Note: If the login window does not appear, please refer to Q1 of **Need Help?** in this guide.



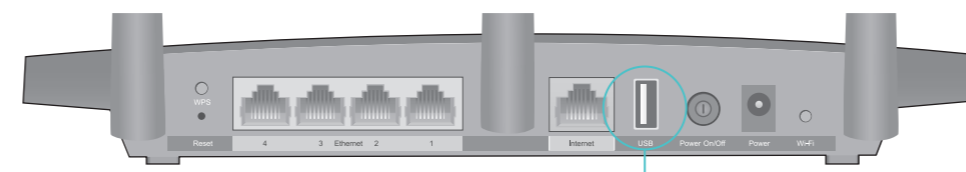
- B** Follow the step-by-step instructions to set up the internet connection and register the TP-Link Cloud service.



😊 Enjoy the internet!

## USB Applications

With the USB port, it's easy to share printers, files and media with multiple devices.



USB Port for Sharing

**Local Storage Sharing**  
Share files from the USB drive with devices on your home network

**Printer Sharing**  
Share a printer with multiple computers connected to the router

**Remote Access**  
Access the USB drive when you are away from home

**Media Server**  
Play media from the USB drive on your computer and smart devices



To learn more about the USB applications, visit <http://www.tp-link.com/app/usb>, or simply scan the QR code.

## TP-Link Cloud Service

TP-Link Cloud service provides a better way to manage your cloud devices. For example:



### Remote Management

Easily manage your home network when you are out and about via the Tether app on your smartphone or tablet.

### Timely Upgrade Notifications

Keep informed of the latest firmware updates, ensuring your router stays at its best.

### One for All

Manage multiple TP-Link Cloud devices, all from a single TP-Link ID.

You can set up and enjoy cloud functions via the Tether app or through the web management page at <http://tplinkwifi.net>.

To learn more about TP-Link Cloud service and other useful features supported by the router (including Guest Network, Parental Controls, Access Control and more), please refer to the User Manual at [www.tp-link.com](http://www.tp-link.com).

## Need Help?

### Q1. What should I do if I cannot access the web management page?

- If the computer is set to a static IP address, change its settings to obtain an IP address automatically.
- Verify that <http://tplinkwifi.net> is correctly entered in the web browser. Alternatively, enter <http://192.168.0.1> or <http://192.168.1.1> in the web browser and press **Enter**.
- Use another web browser and try again.
- Reboot your router and try again.
- Disable and enable the network adapter being used.

### Q2. What should I do if I cannot access the internet?

- Check if the internet is working normally by connecting a computer directly to the modem using an Ethernet cable. If it is not, contact your internet service provider.
- Log in to the web management page of the router, and go to the **Basic > Network Map** page to check whether the internet IP address is valid or not. If it is, please run the Quick Setup again; otherwise, check the hardware connection.
- Reboot your router and try again.
- For cable modem users, log in to the web management page of the router. Go to **Advanced > Network > Internet > MAC Clone**, click **Use Current Computer MAC Address** and click **Save**. Then reboot both the modem and the router.

### Q3. How do I restore the router to its factory default settings?

- With the router powered on, use a pin to press and hold the **Reset** button on the back until the Power LED blinks.
- Log in to the web management page of the router, go to **Advanced > System Tools > Backup & Restore**, and click **Factory Restore**. The router will restore and reboot automatically.

### Q4. What should I do if I forget my web management page password?

- If you are using a TP-Link ID to log in, click **Forgot password** on the login page and then follow the instructions to reset it.
- Alternatively, press and hold the **Reset** button on the back of the router until the Power LED blinks to reset it, then visit <http://tplinkwifi.net> to create a new login password.

### Q5. What should I do if I forget my wireless network password?

- If you have not changed the default wireless password, you can find it on the label at the bottom of the router.
- Connect a computer directly to the router using an Ethernet cable. Log in to the router's web management page at <http://tplinkwifi.net>, and go to **Basic > Wireless** to retrieve or reset your wireless password.

📞 For technical support and other information, please visit <http://www.tp-link.com/support>