

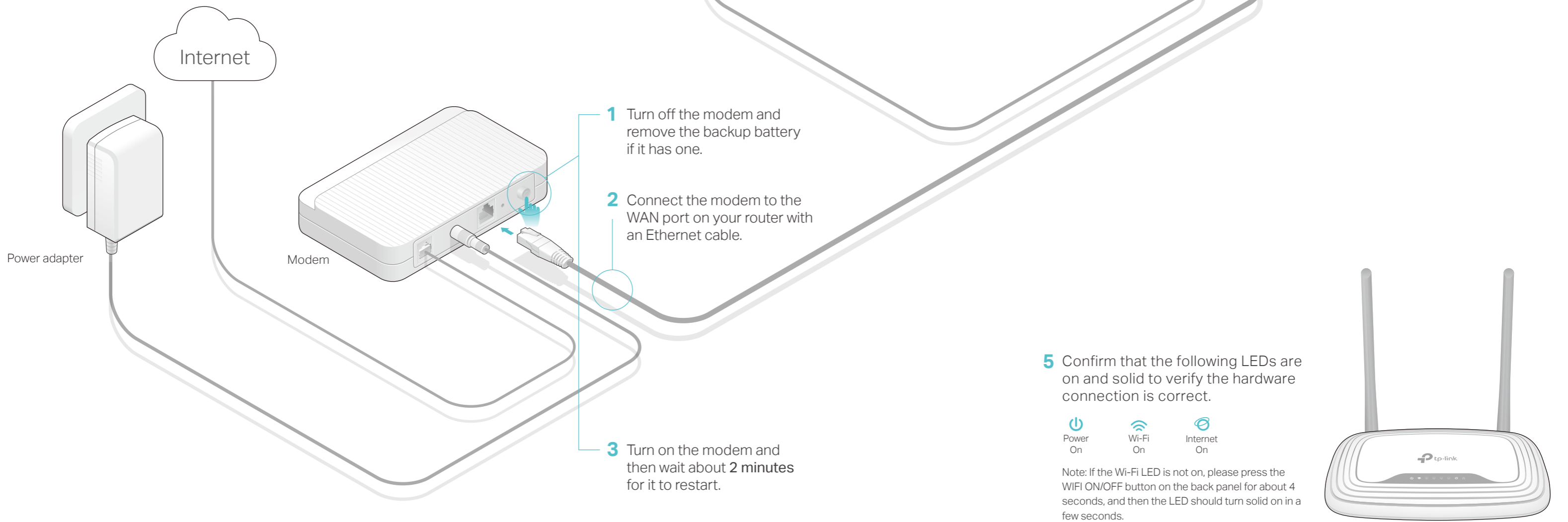
Quick Installation Guide

300Mbps Wireless N Router

TL-WR841N

Connect the Hardware

If your Internet connection is through an Ethernet cable from the wall instead of through a DSL / Cable / Satellite modem, connect the Ethernet cable directly to the router's WAN port, and follow Step 4 and 5 to complete the hardware connection.

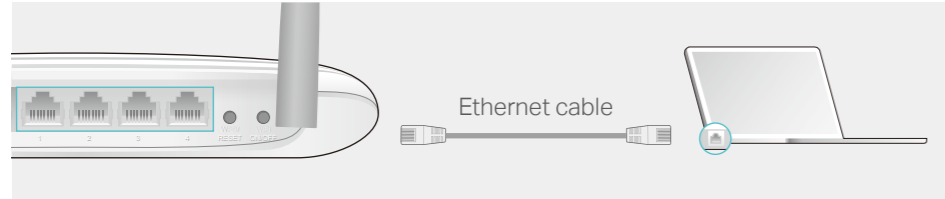


Configure the Router

1. Connect your computer to the router (Wired or Wireless)

• Wired

Turn off the Wi-Fi on your computer and connect the devices as shown below.

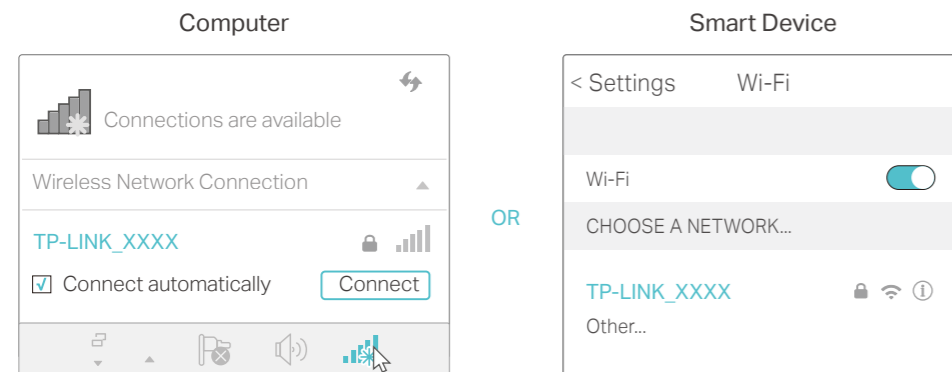


• Wireless

a Find the SSID (network name) and Wireless Password printed on the label at the bottom of the router.



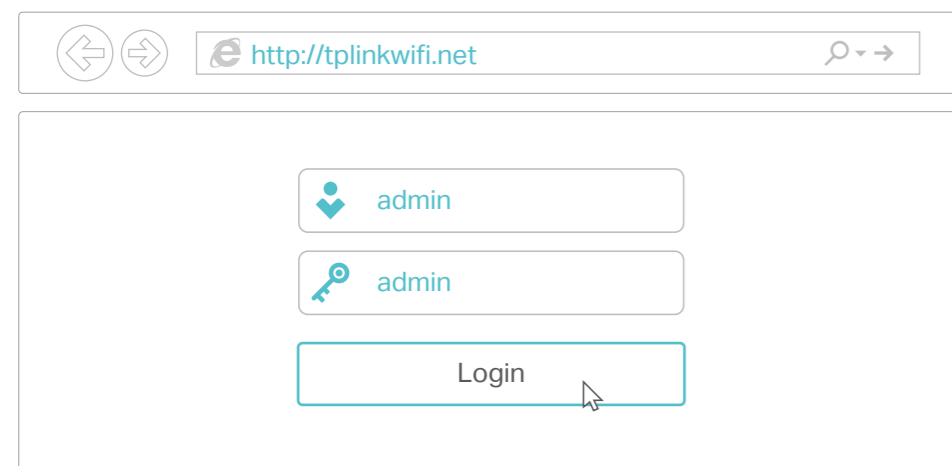
b Click the network icon of your computer or go to Wi-Fi Setting of your smart device, and then select the SSID to join the network.



2. Configure the router using a web browser

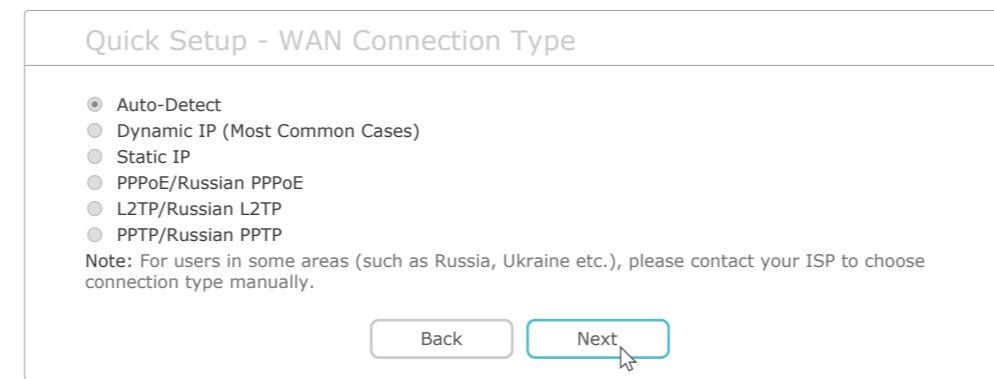
A Launch a web browser, and enter <http://tplinkwifi.net> or <http://192.168.0.1> in the address bar. Use **admin** for both username and password, and then click **Login**.

Note: If the login window does not appear, please refer to FAQ > Q1.



B Follow the step-by-step instructions of the Quick Setup to complete the initial configuration.

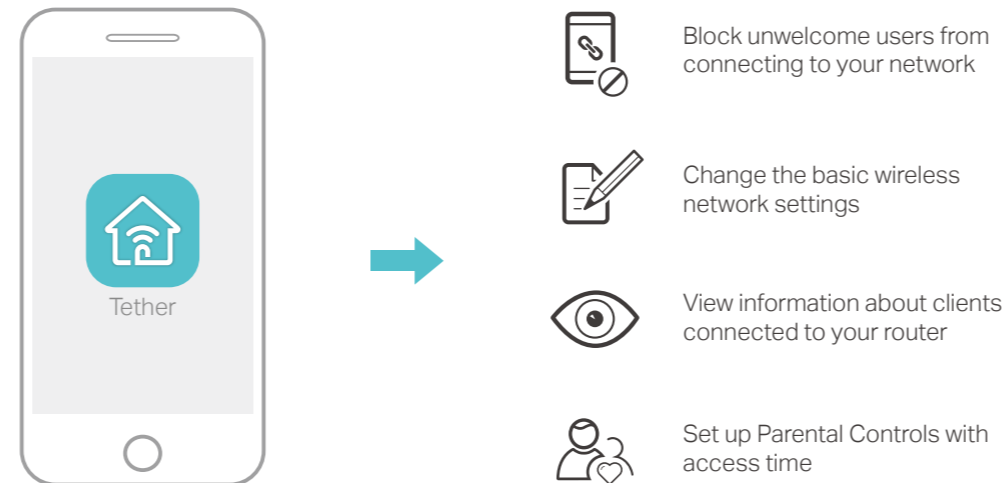
Note: If you are not sure of the WAN Connection Type, please select Auto-Detect.



😊 Enjoy the Internet!

Tether App

The TP-LINK Tether app provides a simple, intuitive way to access and manage your router.



How to begin?

1. Download the TP-LINK Tether app from the Apple App Store or Google Play.
2. Ensure your smart device is wirelessly connected to the home network.
3. Launch the Tether app and start managing your home network.



Scan to download

More Features

The TP-LINK router supports various features, including Guest Network, Parental Controls, Access Control and more. You can log into the router's web management page <http://tplinkwifi.net> to apply these functions. For instructions, please refer to the [User Manual](#) at www.tp-link.com.

FAQ (Frequently Asked Questions)

Q1. What can I do if the login window does not appear?

- If the computer is set to a static or fixed IP address, change the settings to obtain an IP address automatically.
- Verify if <http://tplinkwifi.net> or <http://192.168.0.1> is correctly entered in the web browser. Alternatively, enter <http://192.168.1.1> in the web browser and press Enter.
- Use another web browser and try again.
- Reboot your router and try again.
- Disable then re-enable the network adapter being used.

Q2. What can I do if I cannot access the Internet?

- Check if the Internet is working properly by connecting a computer directly to the modem using an Ethernet cable. If it is not, contact your Internet Service Provider.
- Log into the web management page of the router, and go to the **Status** page to check whether the WAN IP address is valid or not. If it is, please run the Quick Setup again; otherwise, recheck the hardware connection.
- Reboot your router and try again.
- For cable modem users, log into the web management page of the router. Go to **Network > MAC Clone**, click **Clone MAC Address** and click **Save**. Then reboot both the modem and the router.

Q3. How do I restore the router to its factory default settings?

- With the router powered on, use a pin to press and hold the **WPS/RESET** button on the back panel of the router for about 8 seconds.
- Log into the web management page of the router, and go to **System tools > Factory Defaults**, click **Restore**. The router will restore and reboot automatically.

Q4. What can I do if I forget my web management page password?

- Refer to FAQ > Q3 to reset the router, and then use the default **admin** (all lowercase) for both username and password to log in.

Q5. What can I do if I forget my wireless network password?

- The factory default wireless password is printed on the label of the router.
- Connect a computer directly to the router using an Ethernet cable. Log into the router's web management page, and go to **Wireless > Wireless Security** to obtain or reset your wireless password.

If your questions are not listed here, please refer to the support page at www.tp-link.com.