



300Mbps Wireless N Router

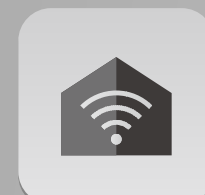
TL-WR845N

Highlights

- 300Mbps wireless speed ideal for interruption sensitive applications like HD video streaming
- Three antennas greatly increase the wireless robustness and stability
- Easy wireless security encryption at a push of WPS button
- IP based bandwidth control allows administrators to determine how much bandwidth is allotted to each PC
- Compatible with IPv6 -the more recent Internet Protocol version
- IP based bandwidth control allows administrators to determine how much bandwidth is allotted to each PC
- TP-LINK Tether App allows quick installation and easy management using any mobile device



300Mbps
2.4GHz



Maximum
Range



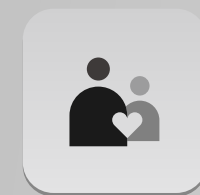
IP QoS



WDS



Guest
Network



Parental
Control



TP-LINK
Tether App

Features



Speed

- Blazing Fast Wireless Speed – Wireless speeds up to 300Mbps
- Megabit Wired Speed – Four 10/100 Ethernet ports ensure fast and stable data transmission



Wi-Fi Range

- Enhanced Coverage & Reliable Wi-Fi – High gain antennas ensure continuous Wi-Fi signal to all your devices while boosting widespread coverage throughout your very large home



Reliability

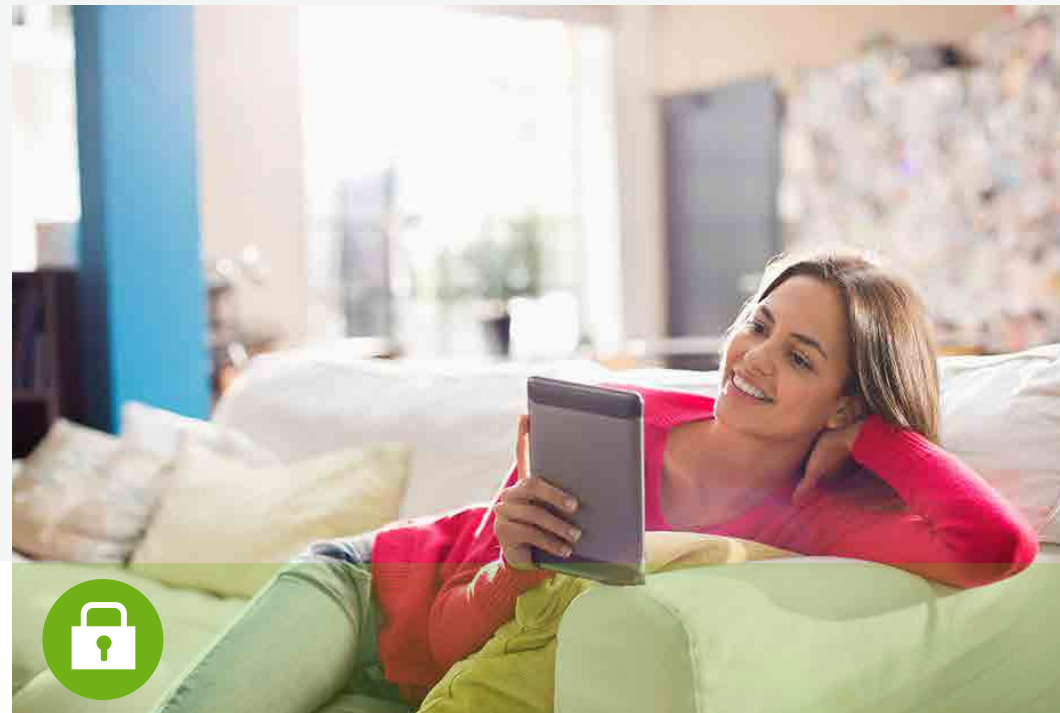
- Easy Bandwidth Management – IP-based Bandwidth Control makes it easier for you to manage the bandwidth of connected devices

Features



Ease of Use

- **Intuitive Web UI** – The intuitive web UI supports a quick & hassle free installation
- **Multifunctional Tether App**– Tether App allows easy network management at your fingertips
- **Fast Encryption** – Easy one-touch WPA wireless security encryption with the WPS button
- **Power On/Off** – Convenient power saving



Security

- **Guest Network Access** – Guest Network Access provides secure Wi-Fi access for guests
- **Parental Control** – Establish restricted access policies for all connected devices
- **Encryptions for Secure Network** – WPA-PSK/WPA2- PSK encryptions provide active defense against security threats for user networks

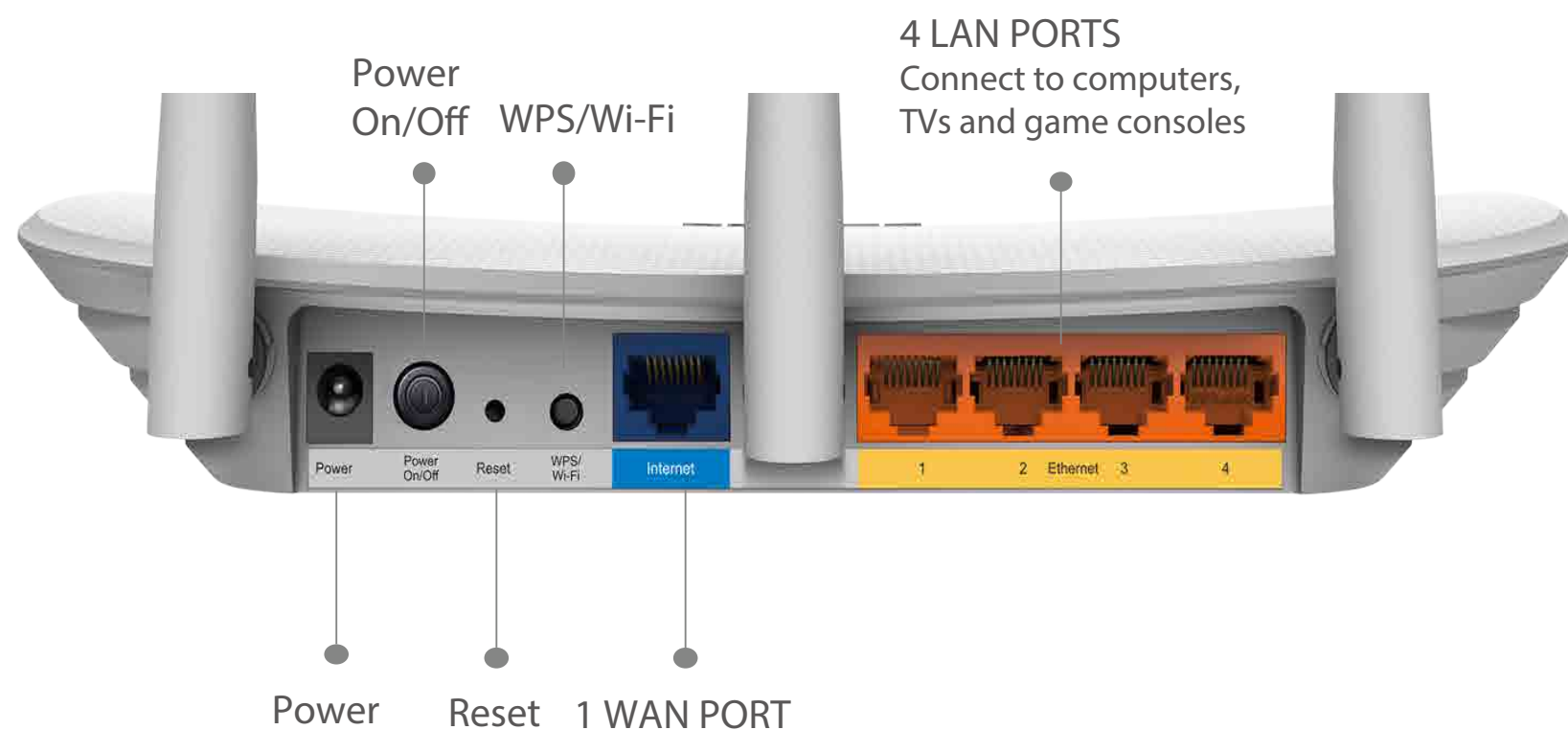
Specifications

Hardware

- External Power Supply: 9VDC / 0.6A
- Antenna: 3*5dBi Fixed Omni Directional Antenna
- Dimensions (W x D x H): 9.1x 5.7 x 1.24n. (230 x 144 x 35mm)
- Interface: 4 10/100Mbps LAN PORTS 1 10/100Mbps WAN PORT
- Button: Wi-Fi/WPS Button Power On/Off Button
- Wireless Standards: IEEE 802.11n, IEEE 802.11g, IEEE 802.11b

Wireless

- Frequency: 2.4-2.4835GHz
- Signal Rate: 11n: Up to 300Mbps(dynamic)
11g: Up to 54 Mbps(dynamic)
11b: Up to 11Mbps(dynamic)
- Transmit Power: EU version <20dBm
- Reception Sensitivity: 270M: -70dBm@10% PER
130M: -74dBm@10% PER
108M: -74dBm@10% PER
54M: -77dBm@10% PER
11M: -87dBm@8% PER
6M: -90dBm@10% PER
1M: -98dBm@8% PER
- Wireless Function: Enable/Disable Wireless Radio, WDS Bridge, WMM, Wireless Statistics
- Wireless Security: 64/128/152-bit WEP / WPA / WPA2, WPA-PSK / WPA2-PSK
- Wireless Security: 64/128/152-bit WEP, WPA / WPA2, WPA-PSK / WPA2-PSK



Specifications

Software

- **Quality of Service:** WMM, Bandwidth Control
- **WAN Type:** Dynamic IP/Static IP/PPPoE/PPTP/L2TP/BigPond
- **Management:** Access Control, Local Management, Remote Management
- **DHCP:** Server, Client, DHCP Client List, Address Reservation
- **Port Forwarding:** Virtual Server, Port Triggering, UPnP, DMZ
- **Dynamic DNS:** DynDns, Comexe, NO-IP
- **VPN Pass-Through:** PPTP, L2TP, IPSec (ESP Head)
- **Access Control:** Parental Control, Local Management Control, Host List, Access Schedule, Rule Management
- **Firewall Security:** DoS, SPI Firewall, IP Address Filter/MAC Address Filter/Domain Filter, IP and MAC Address Binding
- **Protocols:** Support IPv4 and IPv6
- **Guest Network:** 2.4GHz Guest Network x1

Others

Certification: CE, RoHS

Package Contents: Wireless N Router TL-WR845N, Power supply unit, Ethernet Cable, Quick Installation Guide

System Requirements: Microsoft® Windows® XP/Vista/7/8/8.1/10, MAC® OS, NetWare®, UNIX® or Linux

Environment:

- **Operating Temperature:** 0 °C ~40 °C (32 °F ~104 °F)
- **Storage Temperature:** -40 °C ~70 °C (-40 °F ~158 °F)
- **Operating Humidity:** 10%~90% non-condensing
- **Storage Humidity:** 5%~90% non-condensing

Others

Ideal to use with



- 300Mbps Wireless N USB Adapter TL-WN821N



- 300Mbps Wireless N PCI Adapter TL-WN951N

Similar Products



- 300Mbps Wireless N Router TL-WR841N



- 450Mbps Wireless Router TL-WR940N



For more information, please visit

http://www.tp-link.com/en/products/details/cat-9_TL-WR845N.html#overview

or scan the QR code left

Specifications are subject to change without notice. TP-LINK is a registered trademark of TP-LINK Technologies CO., Ltd. Other brands and product names are trademarks or registered trademarks of their respective holders. No part of the specifications may be reproduced in any form or by any means or used to make any derivative such as translation, transformation, or adaptation without permission from TP-LINK Technologies CO., Ltd.

www.tp-link.com