



Let's get started with your new Smart Outlet.

## SAFETY FIRST

Before installing, servicing or removing the outlet, read and follow all safety precautions including the following:

- CAUTION – Risk of Electric Shock – More than one disconnect switch may be required to de-energize the equipment before servicing. A circuit breaker which disconnects the Line and Neutral conductor simultaneously is suitable. Ensure power is off at the circuit breaker before removing or installing any outlet. Use a non-contact voltage tester to ensure the power is off.
- The Smart Outlet must be installed and used in accordance with the National Electric Code (NEC) or your local electrical code. If you are unfamiliar with these codes and requirements, or are uncomfortable performing the installation, consult a qualified electrician.
- Do not install the Smart Outlet with wet hands or when standing on wet or damp surfaces.
- Install only in a suitable UL Listed outlet box (suitable dimensions: H > 2.95 in./75 mm, W > 1.81 in./46 mm, D > 3.15 in./80 mm).
- Tighten terminal screws to 13 lbf-in.

## STEP 1

### Download & Install Kasa App

Get the **Kasa Smart** app from the Apple App Store or Google Play.



## STEP 2

### Add Your Device

Tap the ⊕ button in the Kasa app and select **Smart Plugs > Smart Outlet**. Follow Kasa app instructions to wire your outlet and connect it to your home network.

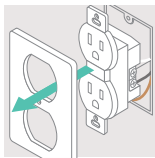


\*Wiring instructions are also provided on the back page.

## Wiring Instructions

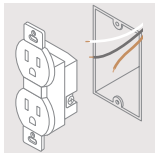
### 1. Remove the Old Outlet

Turn off power at the circuit breaker, remove your old wallplate, and gently pull the outlet out.



### 2. Disconnect the Wires

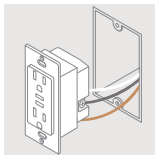
Disconnect the wires from your old outlet.



### 3. Connect the New Wires

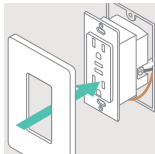
Connect wires to the terminals of the new outlet and tighten the screws holding the wires onto the terminals.

Note: Generally, the black wire is the Line wire, the white wire is the Neutral wire, and the Ground wire is normally green or copper. If you are unsure, consult a qualified electrician.



### 4. Secure the New Outlet

Secure the new outlet and wallplate with the screws provided.



**Need help?**

**Visit [www.tp-link.com/support](http://www.tp-link.com/support)**

for technical support, user guides, FAQs, warranty & more