

# Quick Installation Guide

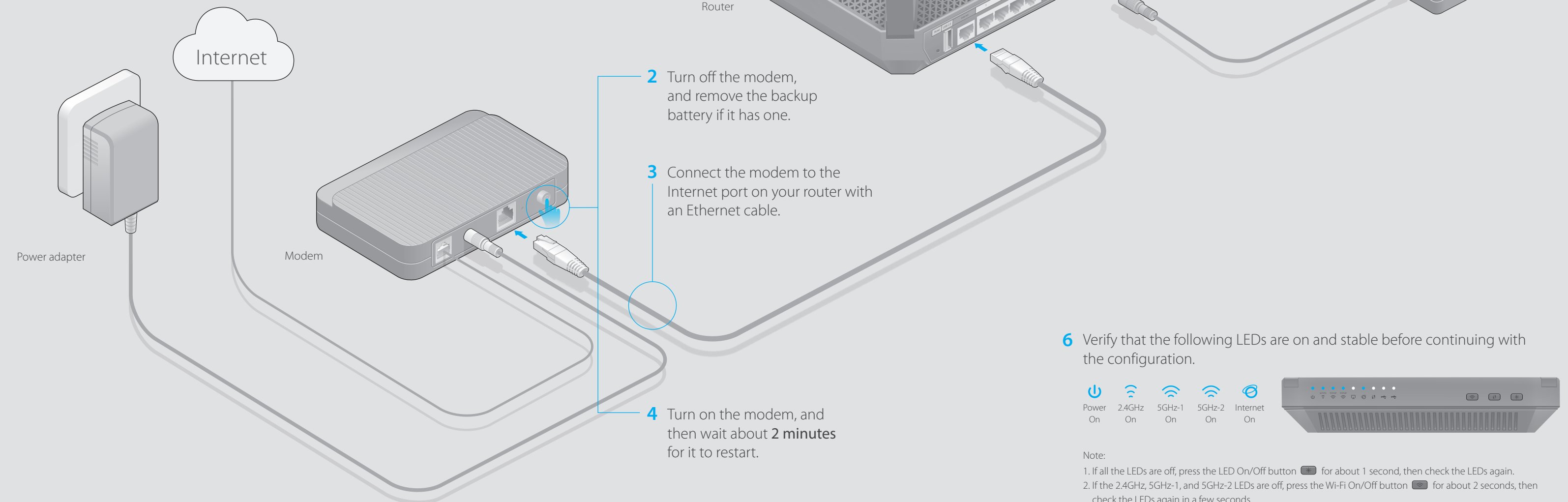
AC3200 Wireless Tri-Band Gigabit Router

*Archer C3200*

7106505511 REV1.0.2

## Connecting the Hardware

If your Internet connection is through an Ethernet cable from the wall instead of through a DSL / Cable / Satellite modem, connect the Ethernet cable directly to the router's Internet port, then follow steps 5 and 6 to complete the hardware connection.



**1** Place the router horizontally and extend the antennas to the maximum angle.

Note: For best performance, horizontal installation is recommended. Antenna direction and position can affect performance in vertical installation situations.

Router

**5** Turn on the router.

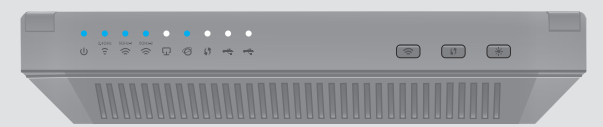
**2** Turn off the modem, and remove the backup battery if it has one.

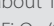
**3** Connect the modem to the Internet port on your router with an Ethernet cable.

**4** Turn on the modem, and then wait about **2 minutes** for it to restart.

**6** Verify that the following LEDs are on and stable before continuing with the configuration.

-  Power On
-  2.4GHz On
-  5GHz-1 On
-  5GHz-2 On
-  Internet On



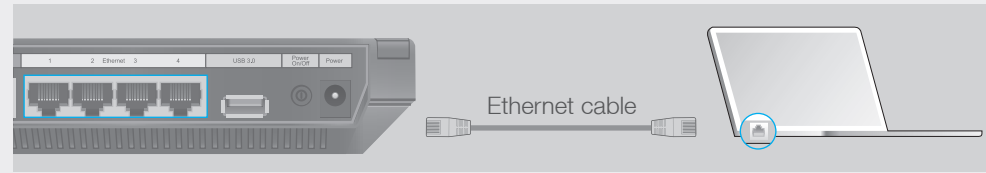
Note:  
 1. If all the LEDs are off, press the LED On/Off button  for about 1 second, then check the LEDs again.  
 2. If the 2.4GHz, 5GHz-1, and 5GHz-2 LEDs are off, press the Wi-Fi On/Off button  for about 2 seconds, then check the LEDs again in a few seconds.

# Configuring the Router

## 1. Connect your computer to the router (wired or wireless).

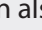
### Wired

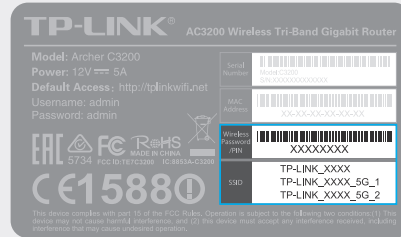
Turn off the Wi-Fi on your computer and connect the devices as shown below.



### Wireless

Connect wirelessly by using the SSIDs (network names) and Wireless Password printed on the product label at the bottom of the router.

You can also connect by pressing the WPS button  on the front panel of the router. For more information about WPS, refer to the User Guide at [www.tp-link.com](http://www.tp-link.com).



## 2. Configure the router via a web browser.

**A** Enter <http://tplinkwifi.net> or <http://192.168.0.1> in the address bar of a web browser. Use **admin** for both username and password, and click **Login**.

Note: If the login page does not appear, please refer to FAQ > Q1.

**B** Create a new username and password, then click **Confirm**. Re-login using the new credentials.

**C** Click **Quick Setup**, select your region and time zone, and click **Next**.

Note: Per FCC regulations, all Wi-Fi products marketed in the U.S. is fixed to the U.S. region.

**D** Select your Internet Connection Type, or click **Auto Detect** if you are unsure of what your connection type is. Click **Next** and follow the instructions.

**E** Use the default or change the wireless settings, and click **Next**.

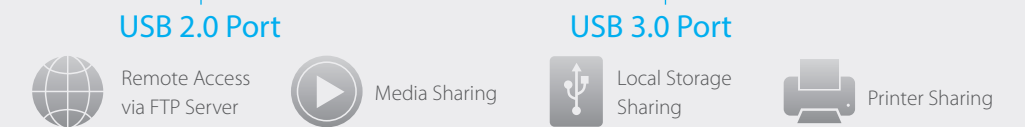
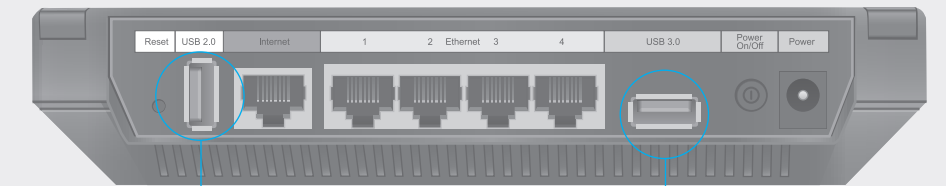
Note: If you change the default SSID and password, please note the new wireless settings.

**F** Confirm your settings, and then click **Save**.

**G** Test your Internet connection, then click **Finish** to complete the Quick Setup.

# USB Features

Use the USB ports for media sharing, storage sharing and printer sharing across your local network. You can also set up an FTP server to access your files remotely through the Internet.



To learn more about the USB features, visit <http://tp-link.com/app/usb>, or simply scan the QR code.



# FAQ (Frequently Asked Questions)

## Q1. What can I do if the login page does not appear?

- A1. If the computer is set to a static or fixed IP address, change the setting to obtain an IP address automatically.
- A2. Verify that <http://tplinkwifi.net> is correctly entered in the web browser. Alternatively, enter <http://192.168.0.1> or <http://192.168.1.1> in the web browser and press **Enter**.
- A3. Use another web browser and try again.
- A4. Reboot your router and try again.
- A5. Disable then re-enable the network adapter being used.

## Q2. What can I do if I cannot access the Internet?

- A1. Check if the Internet is working properly by connecting a computer directly to the modem using an Ethernet cable. If it is not, contact your Internet Service Provider.
- A2. Log in to the Web Management page of the router, and go to the **Basic > Network Map** page to check whether the Internet IP address is valid or not. If it is, please run the Quick Setup again; otherwise, recheck the hardware connection.
- A3. For cable modem users, log in to the Web Management page of the router. Go to **Advanced > Network > Internet > MAC Clone**, click **Use Current Computer MAC Address** and click **Save**, then reboot both the modem and the router.
- A4. Reboot your router and try again.

## Q3. How do I restore the router to its factory default settings?

- A1. While the router is powered on, press and hold the **Reset** button on the back for about 7 seconds until all LEDs go off, then release the button.
- A2. Log in to the Web Management page of the router. Go to **Advanced > System tools > Backup & Restore**, and click **Factory Restore**. The router will restore and reboot automatically.

## Q4. What can I do if I forgot my web management password?

- A. Refer to FAQ > Q3 to reset the router, and then use the default **admin** (all lowercase) for both username and password to log in.

## Q5. What can I do if I forgot my wireless network password?

- A1. The factory default Wireless Password/PIN is printed on the product label of the router.
- A2. Log in to the router's Web Management page, and go to **Basic > Wireless** to obtain or reset your wireless password.

# Tether App

To conveniently manage your network, scan the QR code to download the Tether app on your mobile device.

