

# Quick Installation Guide

AC1200 Wi-Fi Range Extender

RE380D EAC

**(RE)**

**Blinking:** WPS connection is in process.  
**Solid blue:** The extender has established a secure connection, and the signal strength is adequate.  
**Solid orange:** The extender has established a secure connection, but the signal strength is too weak.  
**Off:** No active connection.

**(Ethernet)**

**On:** The Ethernet port is connected.  
**Off:** The Ethernet port is not connected.

**(Power)**

**On:** The extender is on.  
**Blinking:** The extender is initializing.  
**Off:** The extender is off.

**(2.4GHz) / (5GHz)**

**On:** The extender is connected to the 2.4GHz/5GHz wireless network of your host network.  
**Off:** No connection.

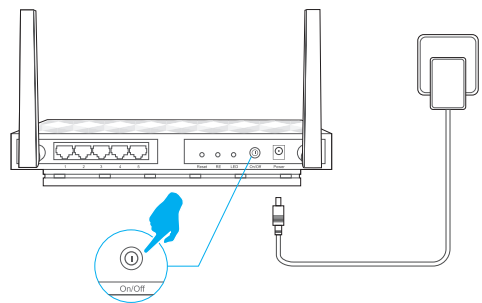
## Button Explanation

**LED button:** To turn all LEDs on or off, press the LED button.  
**Power button:** To turn on or off the extender, press the Power button.

## Option ONE Using your Web Browser

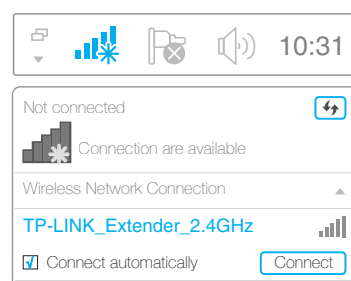
### 1 Power on

Plug the extender's adapter into an electrical outlet near your router. Then turn on the extender and wait until the **Power LED** is lit and solid blue.



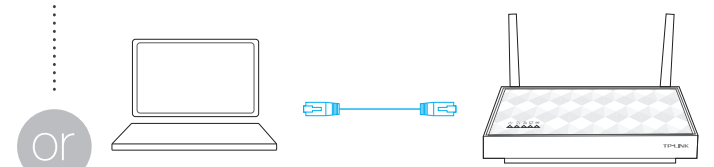
### 2 Connect to the Extender

via Wireless



1. Unplug the Ethernet cable from your computer (if any).
2. Click the Wi-Fi icon on the taskbar and connect to the extender's network (e.g. TP-LINK\_Extender\_2.4GHz/5GHz).

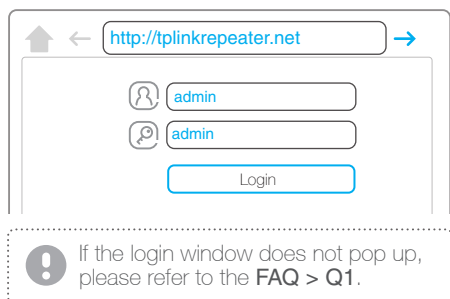
via Ethernet Cable



1. Disable the Wi-Fi on your computer.
2. Connect your computer to the extender via an Ethernet cable.

### 3 Configure

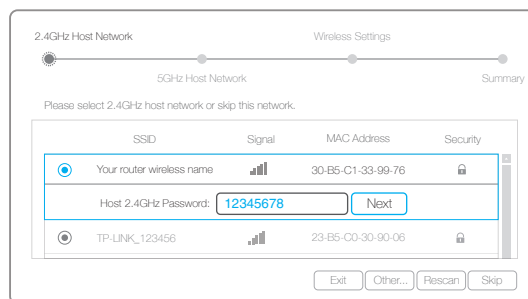
1. Launch a web browser, type <http://tplinkrepeater.net> in the address bar and use **admin** (all lowercase) for both Username and Password to log in.



If the login window does not pop up, please refer to the [FAQ > Q1](#).

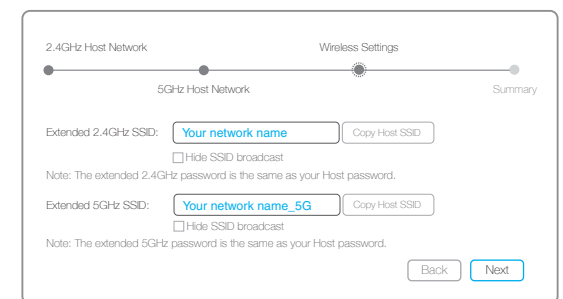
2. Create a new username and password for secure management purpose, and click **Confirm**.

3. Select your router's **2.4GHz/5GHz host network**, enter the password, and then click **Next**.



If your router does not support 5GHz wireless network, please click **Skip** to continue.

4. Either keep the default SSIDs or customize them for the extended networks, and then click **Next**.



5. Verify your wireless settings and click **Finish**. Corresponding LED(s) should turn solid on.




### 4 Relocate

1. Plug in the extender **halfway** between your wireless router (Host Network) and the Wi-Fi dead zone.
2. Wait for the extender to reconnect and the **(RE)** LED should turn **solid blue**. If not, **relocate it closer to the router** to achieve better signal quality.




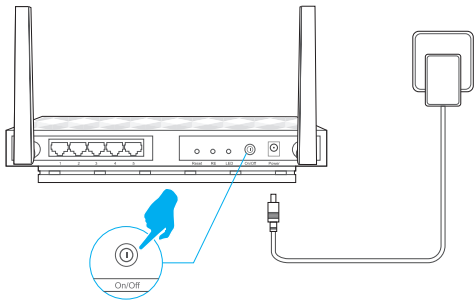
Both extended networks share the **same Wi-Fi passwords** as those of your host networks, but may have **different wireless network names** if you have customized them during the configuration.

## Option TWO Using the RE (WPS) Button

WPS is an easier way to extend your host network. You are recommended to use this method if your host router has a WPS button. The button might look like one of these:   . Otherwise, please refer to **Option ONE**.

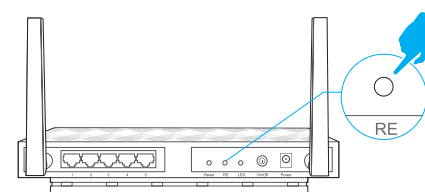
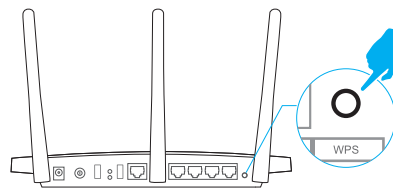
### 1 Power on


Plug the extender's adapter into an electrical outlet near your router. Then turn on the extender and wait until the **Power LED**  is lit and solid blue.





### 2 Connect

- 1 Press the WPS button on your router, and then press the RE button on your extender in 2 minutes.



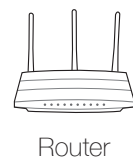
The  LED should change from blinking to solid, indicating that WPS connection was successful. If not, please refer to **Option ONE**.

- 2 If you are connecting the extender to a dual-band router but only  5GHz or  2.4GHz LED is on, repeat Step 1 to connect the other band.

 For more information about using WPS on your router, please refer to the router manufacturer's user guide. Some ISP gateways disable the WPS function by default. If the WPS method fails, please refer to **Option ONE**.

### 3 Relocate

1. Plug in the extender **halfway** between your wireless router (Host Network) and the Wi-Fi dead zone.
2. Wait for the extender to reconnect and the  LED should turn **solid blue**. If not, **relocate it closer to the router** to achieve better signal quality.



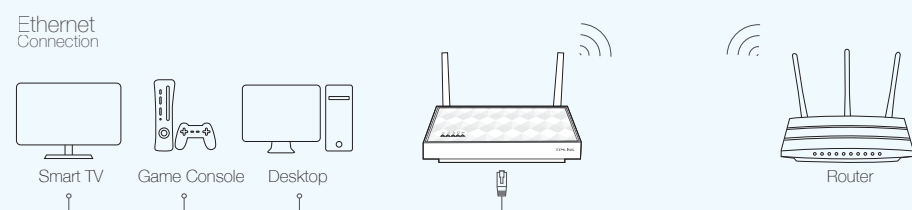
## Enjoy!

Both extended networks share the **same SSIDs (network names)** and **passwords** as those of your host networks.

## Entertainment Adapter

The extender can be used as a wireless adapter to connect any Ethernet-only device such as a Blu-ray player, game console, DVR, or smart TV to your Wi-Fi network.

First, connect the extender to your router using Option ONE or Option TWO. Then connect the extender to your Ethernet-only device via an Ethernet cable.



## TP-LINK Tether App

Tether provides a simple, intuitive way to access and manage your extender with your iOS or Android devices.



-  Setup the extender
-  Modify current settings
-  Turn on/off LED
-  Block unwelcome devices

### How to begin?

1. Download the Tether app from the App Store or Google Play.
2. Ensure your device is wirelessly connected to the extender or to the host router.
3. Launch the app and start managing your extended network.



Scan to download

## Frequently Asked Questions (FAQ)

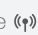
### Q1. What should I do if I cannot access the extender's web management page?

- A1. If your computer is wirelessly connected, make sure that you have connected to the **extender's SSID**. If your computer is connected via an Ethernet cable, please make sure that the connection is stable.
- A2. Make sure your computer is set to obtain an IP address and DNS server address automatically.
- A3. Verify that <http://tplinkrepeater.net> is correctly entered in the web browser and press **Enter**.

### Q2. What should I do when the LED is on, but only one band is connected?

- A. It depends on your router's capabilities. If you are connecting to a dual-band router but only 2.4GHz or 5GHz LED is on, then press the WPS button on the router and on the extender again to connect the other band.

### Q3. Why the LED doesn't change to solid after completing Option ONE?

- A1. You may have entered the incorrect Wi-Fi password of your host network during the configuration. Please log into the extender's web management page to check the password and try again.
- A2. If the  LED still doesn't change to solid, please reset the extender and go through the configuration again.

### Q4. How can I reset the extender?

- A. While the extender is powered on, use a pin to press and hold the **Reset** button until all the LEDs turn on momentarily, and then release the button.