

FTP Server Application Guide

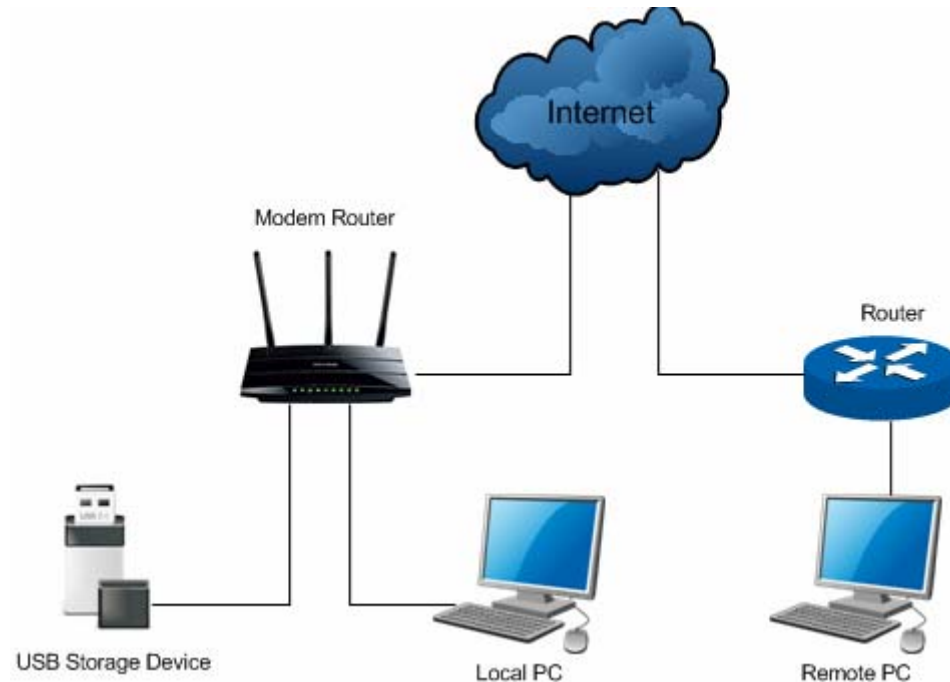
Contents

| | |
|---------------------------------------|-----------|
| Overview | 1 |
| How to access FTP Server | 2 |
| LAN Access..... | 2 |
| WAN Access..... | 8 |
| Extended Application..... | 14 |
| How to create a user account..... | 14 |
| How to add a shared folder | 16 |
| ➤Set Access Authorization..... | 21 |
| Troubleshooting | 23 |

Overview

FTP (File Transfer Protocol) server feature allows you to share a USB storage device that's connected to the modem router, to users in the local or public network.

Typical Topology



Note:

- (1) USB Storage Device stands for FTP Server in this topology. Some USB storage devices may require using the external power.
- (2) Local PC here means the PC that is in the same subnet with the FTP Server (Modem Router). Local PC can access the FTP Server by LAN (Local Area Network), which is called LAN Access.
- (3) Remote PC here means the PC that is not in the same subnet with the FTP Server. Remote PC needs to go

through the Internet if needed to access the FTP server, which is called WAN Access.

(4) Here in this guide, we take the configuration procedures of TD-W8990 for example.

How to access FTP Server

LAN Access

The modem router's FTP Server function for Local PC is enabled by default, when the storage device is plugged into its USB port. Please follow the steps to access the FTP server.

- **For Windows Users:**


Windows XP:

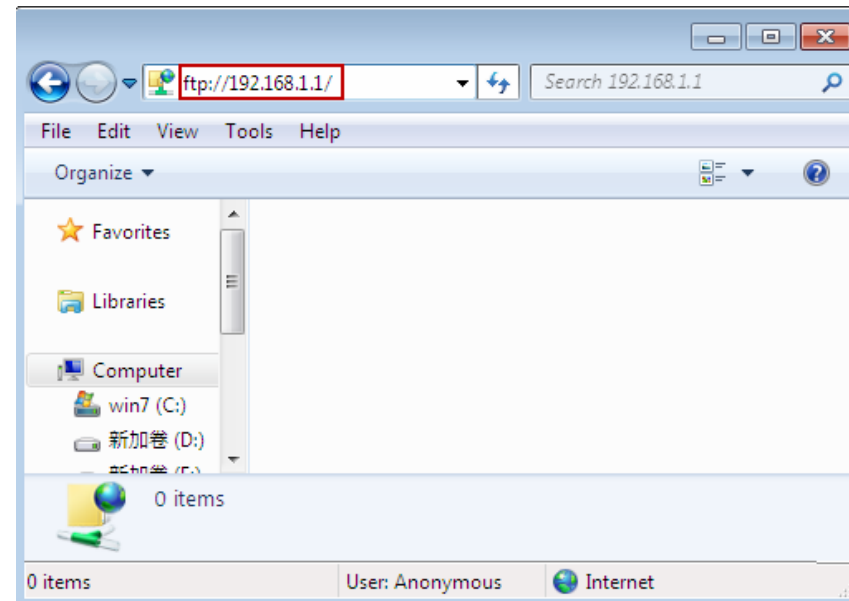
- Go to **Start > My Computer**
- Input <ftp://192.168.1.1> in the address field
- Press **Enter**

Windows Vista/7:

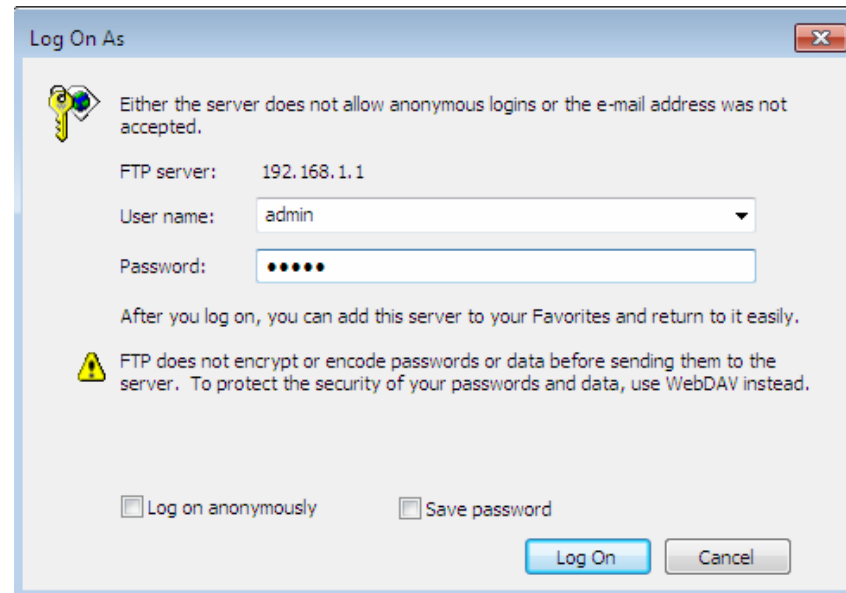
- Go to **Start > Computer**
- Input <ftp://192.168.1.1> in the address field
- Click **Go** or press **Enter**

Windows 8:

- Move your mouse to the lower right corner and you will see **Search** icon  in the Popups. Click it and search **computer**
- Go to **computer** page, and input <ftp://192.168.1.1> in the address field
- Click **Go** or press **Enter**

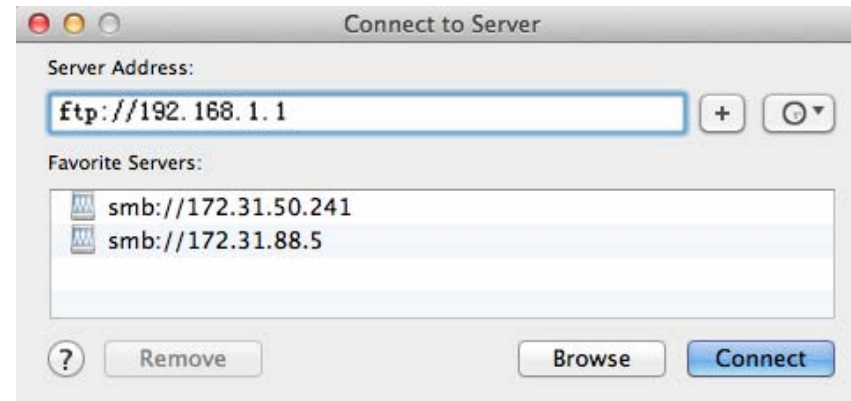


- Input the default username and password:
admin, admin
- Click **Log On**



- **For Mac OS X Users:**

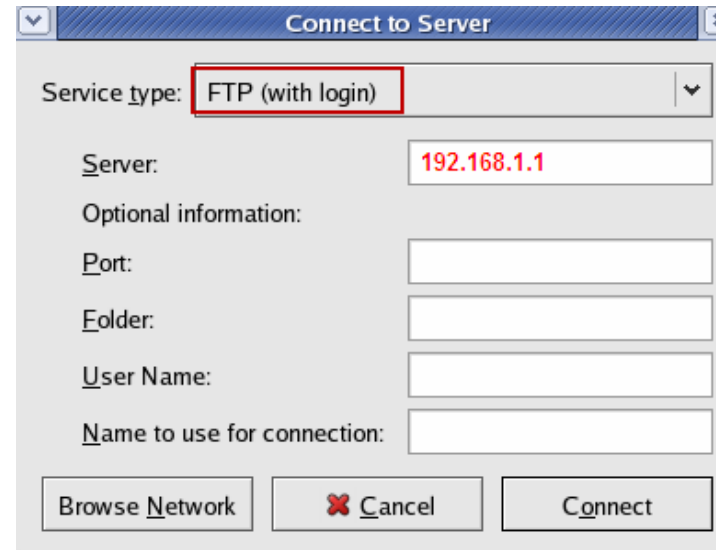
- On the top tray, go to **Go > Connect to Server**
- Input Server Address <ftp://192.168.1.1>
- Click **Connect**



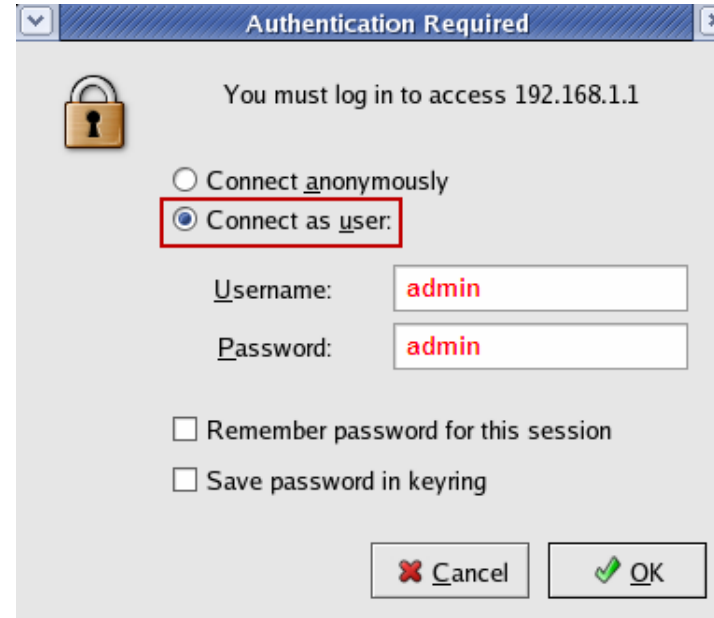
- Select **Registered User**
- Input the default username and password:
admin, admin
- Click **Connect**



- **For Linux Users:**
 - On the top tray, go to **Places > Connect to Server**
 - Choose Service type **FTP(with login)**
 - Input Server **192.168.1.1**
 - Click **Connect**



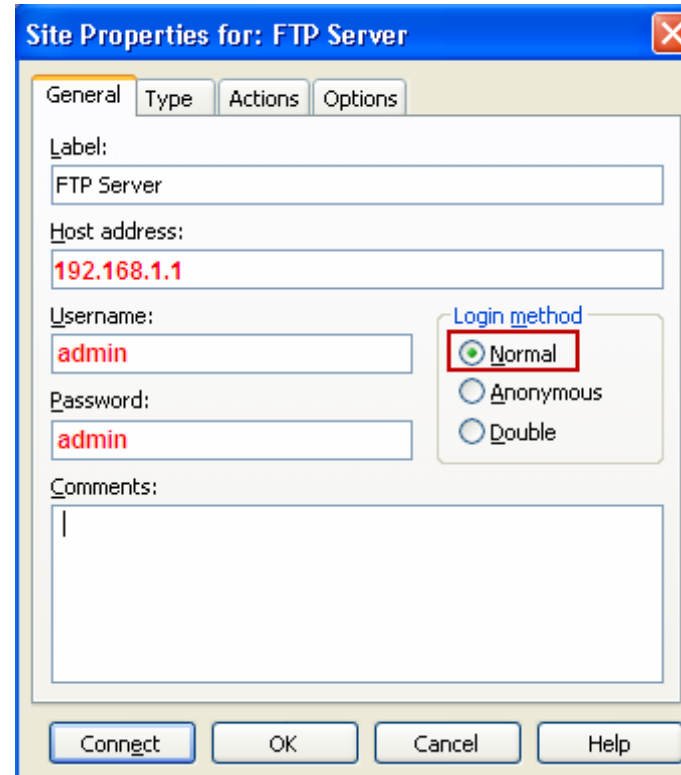
- Select **Connect as user**
- Input the default username and password:
admin, admin
- Click **OK**



- **For third party FTP client software users** (Here we take CuteFTP Professional 8 for example.)

- Open the CuteFTP
- Go to **File >New >FTP Site** or press **Ctrl+N** to open a new **Site properties**.
- Set the dialog box as shown in the figure and click **Connect**.

Note: The default user name/password of the Super User is **admin/admin**.



Note:

To set up different accounts with their own access rights, please log onto the web-based management page and set it on **USB Settings > FTP Server** and **USB Settings > User Accounts**.

Now you have accessed the FTP server, and you can read, write, and download the files on the FTP server.

WAN Access

For WAN access to FTP server, please configure the modem router first. Log onto the web-based management page, then go to **USB Settings > FTP Server** and follow the steps in the figure below.

FTP Server Setting

FTP (File Transfer Protocol) server allows you to share the files on the USB storage device to the local or public network. You will need to define the shared folders and assign the user's authorization for the different folders.

Server Status: **Enabled** **Disable** 1. Select the **Enable** box

Internet Access: Enable Disable

Internet Address: 218.18.0.163

Service Port: (The default is 21. Do not change unless necessary.) 2. Specify a **Service Port**

Folder Table: (Any changes of this table will not take effect until you Apply it.)

| | Share name | Directory | User Index | | | | | Status | Edit |
|--------------------------|------------|-----------|--|---|---|---|---|---------|----------------------|
| | | | (F: Full-Access, R: Read-Only, N: No-Access) | | | | | | |
| | | | 1* | 2 | 3 | 4 | 5 | | |
| <input type="checkbox"/> | volume | / | F | - | - | - | - | Enabled | Edit |

*: "Super User", It has full-access permission to all active volume(s) and shared folder(s).

3. Click **Apply** to make it take effect

Note:

- You could be able to access the folders by entering the following URL on Windows Explorer or other FTP software:
ftp://(IP Address)
eg. ftp://192.168.1.1
- FTP Server will get restarted and all your current FTP connections will be terminated after you click Apply button.

Now your modem router has been configured. The IP behind **Internet Address** would be used to access the FTP server. Here we take 218.18.0.163 as an example. Please follow the steps below to access the FTP server.

- **For Windows Users:**


Windows XP:

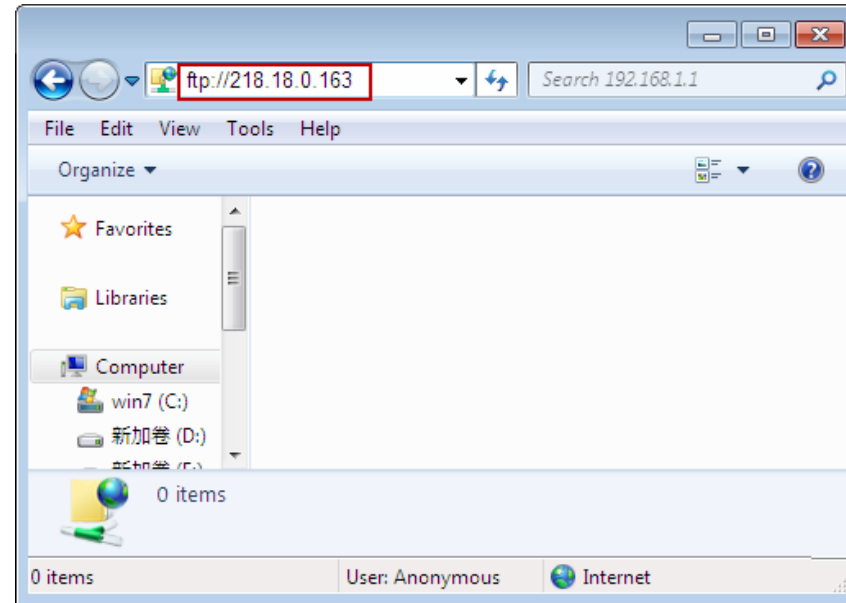
- Go to **Start > My Computer**
- Input <ftp://218.18.0.163> in the address field
- Press **Enter**

Windows Vista/7:

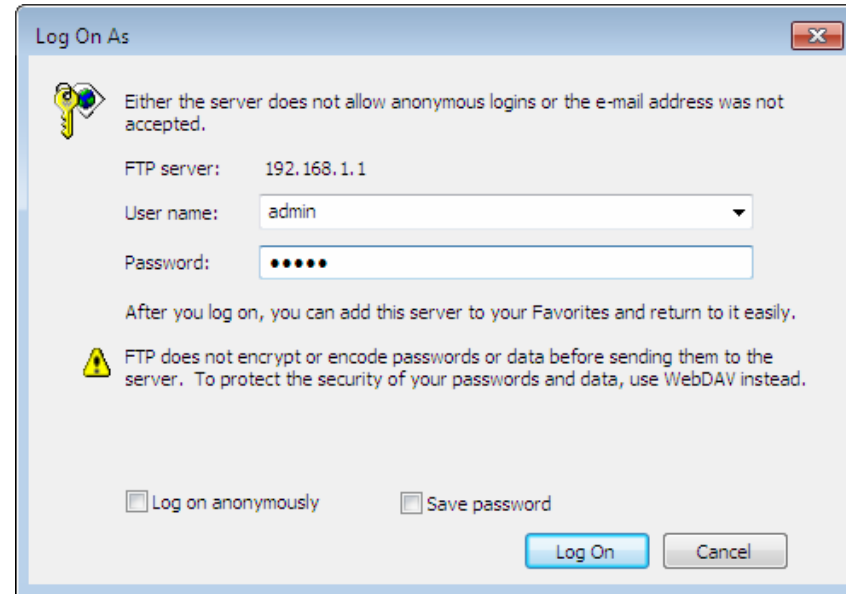
- Go to **Start > Computer**
- Input <ftp://218.18.0.163> in the address field
- Click **Go** or press **Enter**

Windows 8:

- Move your mouse to the lower right corner and you will see **Search** icon  in the Popups. Click it and search **computer**
- Go to **computer** page, and input <ftp://218.18.0.163> in the address field
- Click **Go** or press **Enter**

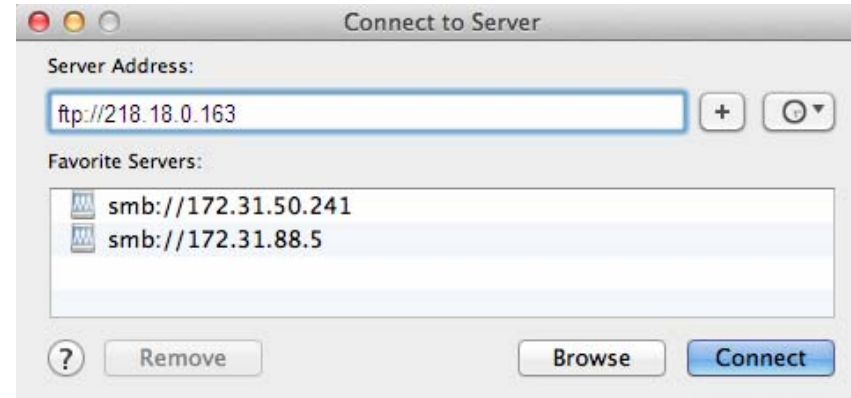


- Input the default username and password:
admin, admin
- Click **Log On**



- **For Mac OS X Users:**

- On the top tray, go to **Go > Connect to Server**
- Input Server Address <ftp://218.18.0.163>
- Click **Connect**

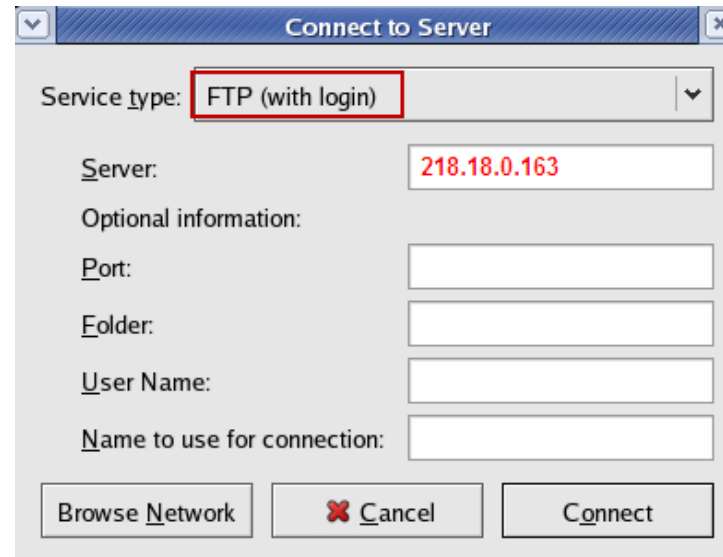


- Select **Registered User**
- Input the default username and password: **admin, admin**
- Click **Connect**

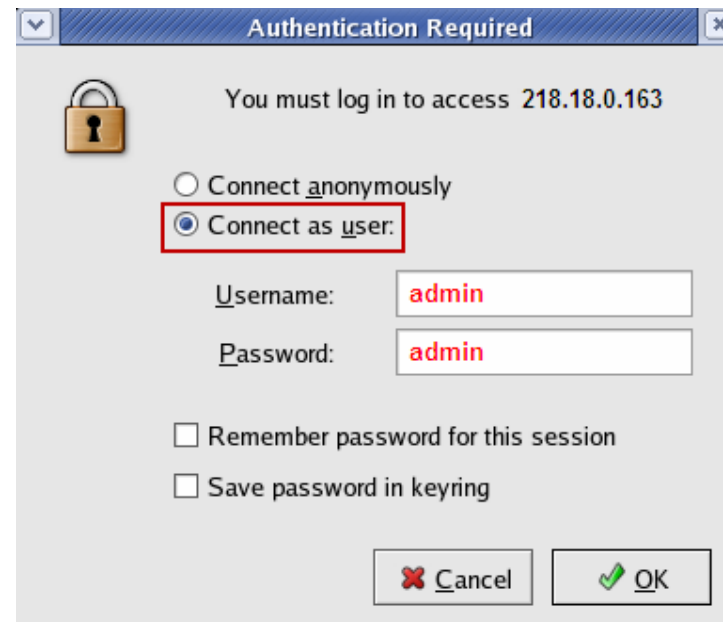


- **For Linux Users:**

- On the top tray, go to **Places > Connect to Server**
- Choose Service type **FTP(with login)**
- Input Server **218.18.0.163**
- Click **Connect**



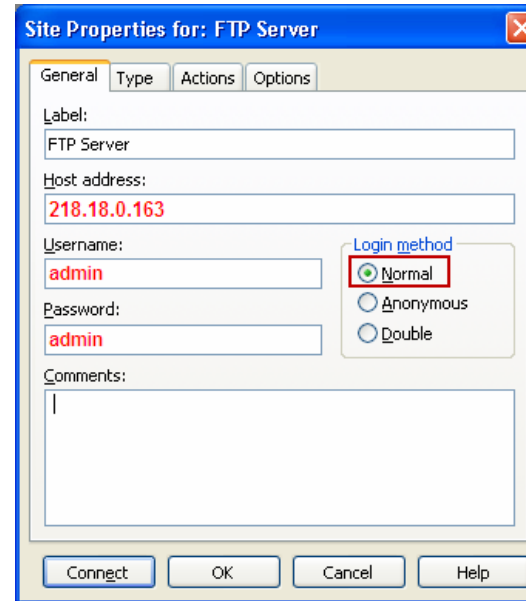
- Select **Connect as user**
- Input the default username and password:
admin, admin
- Click **OK**



- **For third party FTP client software users** (Here we take CuteFTP Professional 8 for example.)

- Open the CuteFTP
- Go to **File >New >FTP Site** or press **Ctrl+N** to open a new **Site properties**.
- Set the dialog box as shown in the figure and click **Connect**.

Note: The default user name/password of the Super User is **admin/admin**.



Note:

To set up different user accounts with their own access rights to different folders, please log onto the web-based management page and set it on **USB Settings > FTP Server** and **USB Settings > User Accounts**.

Now you have accessed the FTP server, and you can read, write, and download the files on the FTP server.

Extended Application

How to create a user account

Log onto the web-based management page, then go to **USB Settings > User Accounts** and follow the steps in the figure below.

User Accounts

This page allows you to control the user account for FTP\Samba Server. The "Super User" could access all active volumes and shared folders with full-access permission (Read & Write). Please click "Apply" button to apply your configuration.

| Index | User Name | Status | Action |
|-------|-----------|----------|---|
| 1 | admin* | Enabled | <input checked="" type="radio"/> Enable <input type="radio"/> Disable |
| 2 | user1 | Disabled | <input type="radio"/> Enable <input checked="" type="radio"/> Disable |
| 3 | | | |
| 4 | | | |
| 5 | | | |

*: "Super User", It has full-access permission to all activated volume(s) and share folder(s).

1. Choose index from the drop-down list box

Choose Index:

2. Enter the information

New User Name:

New Password:

Confirm Password:

3. Click Set

(It will not take effect until you Apply it.)

4. Click Apply to make it take effect

After step 3, the entry will be shown in the table

Note:

- (1) The status of the new user is disabled by default. You need to click Enable in the Action column of user account table to enable folders access.
- (2) User name “admin*” is a “Super User” with full-access permission. Its action that could access all active volumes and shared folders is enabled by default.
- (3) The default user name/password of the Super User is **admin/admin**.
- (4) Currently, there is quantitative restriction of FTP Server user. The modem router allows up to 5 users to log in to FTP Server at the same time. Therefore, if you want to log in, make sure that the number of login-user is less than the maximum quantity. Once the number of users had reached the maximum quantity, the following users would fail to log in even if they have input the correct username and password.
- (5) Different users can be assigned different access restrictions to the shared folder. For details, please refer to **Set Access Authorization**.

How to add a shared folder

Log onto the web-based management page, then go to **USB Settings ->FTP Server** and follow the steps in the figures below.

FTP Server Setting

FTP (File Transfer Protocol) server allows you to share the files on the USB storage device to the local or public network. You will need to define the shared folders and assign the user's authorization for the different folders.

Server Status: Enabled Disable

Internet Access: Enable Disable

Internet Address: 218.18.0.163

Service Port: (The default is 21. Do not change unless necessary.)

Folder Table: (Any changes of this table will not take effect until you Apply it.)

| <input type="checkbox"/> | Share name | Directory | User Index | | | | | Status | Edit |
|--------------------------|------------|-----------|--|---|---|---|---|---------|----------------------|
| | | | (F: Full-Access, R: Read-Only, N: No-Access) | | | | | | |
| | | | 1* | 2 | 3 | 4 | 5 | | |
| <input type="checkbox"/> | volume | / | F | N | - | - | - | Enabled | Edit |

*: "Super User", It has full-access permission to all active volume(s) and shared folder(s).

Add New Folder
Enable Selected
Disable Selected
Delete Selected

Apply

Note:

1. You could be able to access the folders by entering the following URL on Windows Explorer or other FTP software:
ftp://(IP Address)
eg. ftp://192.168.1.1
2. FTP Server will get restarted and all your current FTP connections will be terminated after you click Apply button.

Folder Browse

This page allow you to set a shared folder and access authorization for Storage Sharing service! It will not take effect when Anonymous access been enabled.

Share Name: **2. Type the Share Name in this field**

Directory:

3. Click Browse button

User Access Control Table:

| Index | Username | Access Authorization |
|-------|----------|--|
| 1* | admin | <input checked="" type="radio"/> Full-Access <input type="radio"/> Read-Only <input type="radio"/> No-Access |
| 2 | | |
| 3 | | |
| 4 | | |
| 5 | | |

* : "Super User". It has full-access permission (Read & Write) to all active volume(s) and share folder(s).

Folder Browse

This page allow you to set a shared folder and access authorization for Storage Sharing service! It will not take effect when Anonymous access been enabled.

Share Name:

Directory:

Select Volume: 4. Select the storage device from the drop-down list box

The name of folders in the storage device can be shown here

[/sda1/](#)

[tplink01](#)

[tplink02](#)

[tplink03](#)

5. Click the directory of folder to be shared

User Access Control Table:

| Index | Username | Access Authorization |
|-------|----------|--|
| 1* | admin | <input checked="" type="radio"/> Full-Access <input type="radio"/> Read-Only <input type="radio"/> No-Access |
| 2 | | |
| 3 | | |
| 4 | | |
| 5 | | |

*: "Super User". It has full-access permission (Read & Write) to all active volume(s) and share folder(s).

Folder Browse

This page allow you to set a shared folder and access authorization for Ftp services!

Share Name: TP-LINK

Directory: /tplink01/ ← After step 5, the directory of the folder can be shown here

Select Volume: Kingston (DataTraveler 2.0), sda1(1.5 GB,FAT32) ▾

/sda1/tplink01/
[_uppper](#)

User Access Control Table:

| Index | Username | Access Authorization |
|-------|----------|--|
| 1* | admin | <input checked="" type="radio"/> Full-Access <input type="radio"/> Read-Only <input type="radio"/> No-Access |
| 2 | | |
| 3 | | |
| 4 | | |
| 5 | | |

*: "Super User". It has full-access permission (Read & Write) to all active volume(s) and share folder(s).

← 6. Click **Apply** to make it take effect

FTP Server Setting

FTP (File Transfer Protocol) server allows you to share the files on the USB storage device to the local or public network. You will need to define the shared folders and assign the user's authorization for the different folders.

Server Status: Enabled Disable

Internet Access: Enable Disable

Internet Address: 218.18.0.163

Service Port: (The default is 21. Do not change unless necessary.)

Folder Table: (Any changes of this table will not take effect until you Apply it.)

| | Share name | Directory | User Index (F: Full-Access, R: Read-Only, N: No-Access) | | | | | Status | Edit |
|--------------------------|------------|-----------|--|---|---|---|---|---------|----------------------|
| | | | 1* | 2 | 3 | 4 | 5 | | |
| <input type="checkbox"/> | volume | / | F | - | - | - | - | Enabled | Edit |
| <input type="checkbox"/> | TP-LINK | /tplink01 | F | - | - | - | - | Enabled | Edit |

*: "Super User", it has full-access permission to all active volume(s) and shared folder(s).

7. Click **Apply** to make it take effect

Note:

1. You could be able to access the folders by entering the following URL on Windows Explorer or other FTP software:
ftp://(IP Address)
eg. ftp://192.168.1.1
2. FTP Server will get restarted and all your current FTP connections will be terminated after you click Apply button.

Note:

- (1) The default shared folder **volume** share entire partition of the storage device plugged into the USB port.
- (2) You can share up to 10 folders simultaneously. If you want to share a new folder when the number has reached 10, you can delete an existing share folder and then add a new one.

➤ Set Access Authorization

There are three access authorization levels: full-access, read-only and no-access. The full-access user (i.e. super user) has full-access permission to add, delete and modify files on the FTP server. The read-only user just has file-reading permission. And the no-access user is unable to access the FTP server.

If you want to set access authorization for a user (e.g. user1), please follow the steps illustrated in the figures below.

FTP Server Setting

FTP (File Transfer Protocol) server allows you to share the files on the USB storage device to the local or public network. You will need to define the shared folders and assign the user's authorization for the different folders.

Server Status: Enabled Disable

Internet Access: Enable Disable

Internet Address: 218.18.0.163

Service Port: (The default is 21. Do not change unless necessary.)

Folder Table: (Any changes of this table will not take effect until you Apply it.)

| <input type="checkbox"/> | Share name | Directory | User Index (F: Full-Access, R: Read-Only, N: No-Access) | | | | | Status | Edit |
|--------------------------|------------|-----------|--|---|---|---|---|---------|----------------------|
| | | | 1* | 2 | 3 | 4 | 5 | | |
| <input type="checkbox"/> | volume | / | F | N | - | - | - | Enabled | Edit |
| <input type="checkbox"/> | TP-LINK | /tplink01 | F | N | - | - | - | Enabled | Edit |

* : "Super User", It has full-access permission to all active volume(s) and shared folder(s).

1. Click [Edit](#)

Note:

- You could be able to access the folders by entering the following URL on Windows Explorer or other FTP software:
ftp://(IP Address)
eg. ftp://192.168.1.1
- FTP Server will get restarted and all your current FTP connections will be terminated after you click Apply button.

Folder Browse

This page allow you to set a shared folder and access authorization for Ftp services!

Share Name:

Directory:

User Access Control Table:

| Index | Username | Access Authorization |
|-------|----------|--|
| 1* | admin | <input checked="" type="radio"/> Full-Access <input type="radio"/> Read-Only <input type="radio"/> No-Access |
| 2 | user1 | <input type="radio"/> Full-Access <input checked="" type="radio"/> Read-Only <input type="radio"/> No-Access |
| 3 | | |
| 4 | | |
| 5 | | |

* : "Super User". It has full-access permission (Read & Write) to all active volume(s) and share folder(s).

3. Click Apply to save your settings

2. Here you can set access authorization for user 1

Troubleshooting

What can I do if I forget the password to access the FTP server?

Log onto the web-based management page, and then go to **USB Settings ->User Accounts**, please configure it according to the steps in the following figure.

User Accounts

This page allows you to control the user account for FTP/Samba Server. The "Super User" could access all active volumes and shared folders with full-access permission (Read & Write). Please click "Apply" button to apply your configuration.

| Index | User Name | Status | Action |
|-------|-----------|----------|---|
| 1 | admin* | Enabled | <input checked="" type="radio"/> Enable <input type="radio"/> Disable |
| 2 | user1 | Disabled | <input checked="" type="radio"/> Enable <input type="radio"/> Disable |
| 3 | | | |
| 4 | | | |
| 5 | | | |

*: "Super User", It has full-access permission to all actived volume(s) and share folder(s).

Choose Index:

New User Name:

New Password:

Confirm Password:

1. Create a new password here

2. Click Set (It will not take effect until you Apply it.)

3. Click Apply to save the settings