

Quick Installation Guide

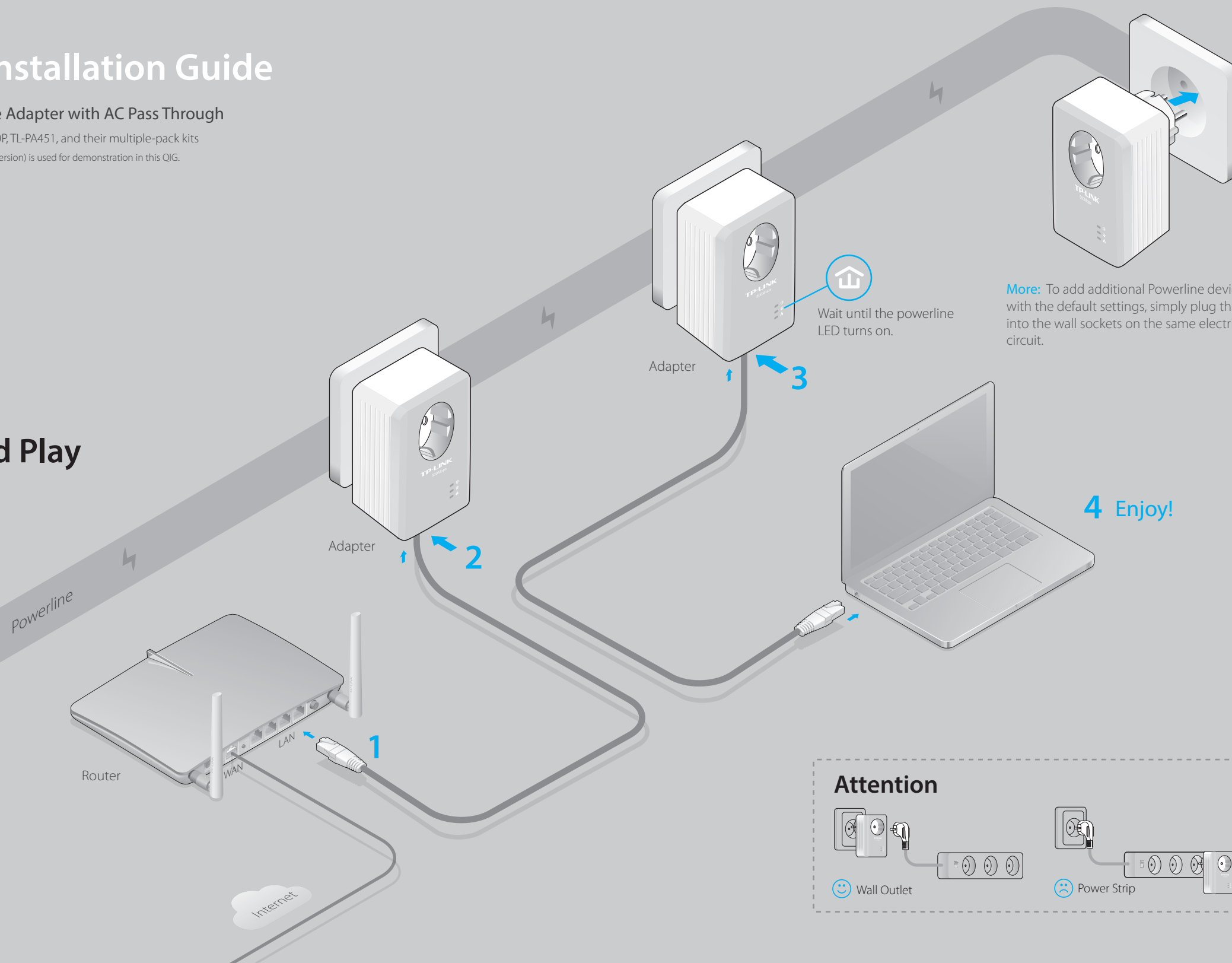
AV500 Powerline Adapter with AC Pass Through

Applicable to TL-PA4010P, TL-PA451, and their multiple-pack kits

* TL-PA4010P KIT (European version) is used for demonstration in this QIG.

7106505496 REV2.0.1

Plug and Play

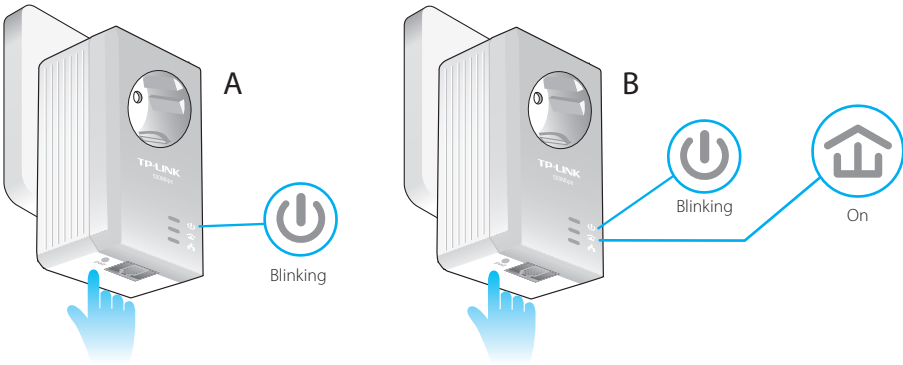


Set Up a Secure Powerline Network by Pairing (Recommended)

You can create or join a secure powerline network using the Pair button on **two devices at a time**.
Tips: We recommend that you plug in the powerline devices near each other when pairing.

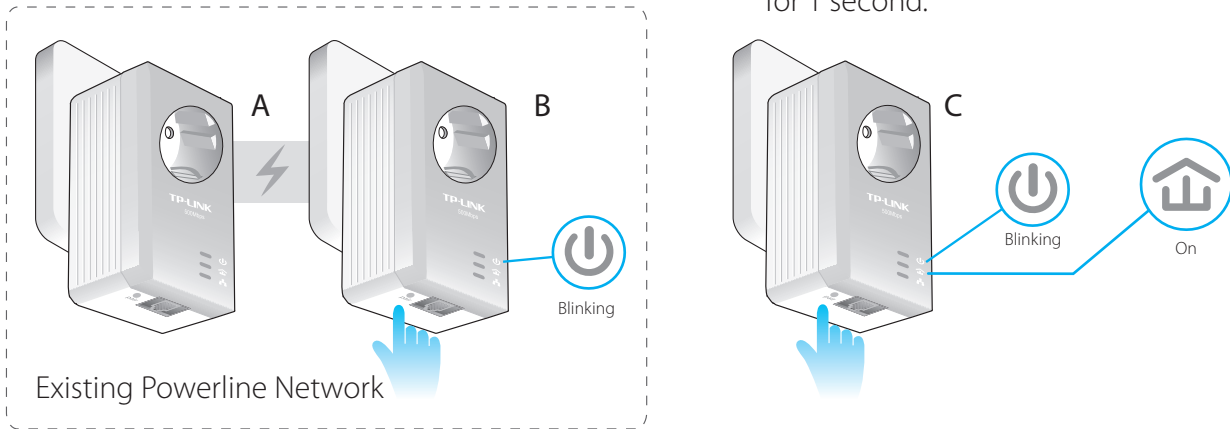
To create a secure powerline network:

- 1 Press the **Pair** button for 1 second.
- 2 Within 2 minutes, press the **Pair** button for 1 second.
- 3 Done.



To join an existing secure powerline network:

- 1 Press the **Pair** button for 1 second on any powerline device in the existing powerline network.
- 2 Within 2 minutes, press the **Pair** button for 1 second.
- 3 Done.



LED and Item Legend

LED	STATUS	DESCRIPTION
Power	On/Off	The powerline adapter is on or off.
	Blinking	Once every second: Pairing is in process. Once every 15 seconds: Power-Saving Mode is on.*
Powerline	On	The adapter is connected to a powerline network.
	Blinking	The adapter is transferring data.
	Off	The powerline adapter is not connected to any powerline network or is in Power-Saving Mode.
Ethernet	On/Off	The Ethernet port is connected or not connected.
	Blinking	The Ethernet port is transferring data.

* Five minutes after the device connected to the powerline adapter is turned off or inactive, the powerline adapter will automatically switch to Power-Saving Mode.

ITEM	DESCRIPTION
Pair Button	Press and hold for 1 second to set up or join a secure powerline network. Press and hold for 8 seconds to leave an existing powerline network.
Integrated Electrical Socket	Use as an electrical outlet expansion for power strip or household appliance. It can remove some electrical noise that might affect powerline performance.

FAQ (Frequently Asked Questions)

Q1. How to troubleshoot if there is no Internet connection in my powerline network?

- A1. Make sure all powerline devices are on the same electrical circuit.
A2. Make sure the Powerline LEDs light up on all of your powerline devices. If they do not, reset or pair all your powerline devices.
A3. Make sure all hardware connections are correctly and securely connected.
A4. Check if you have an Internet connection by connecting the computer directly to the modem or router.
A5. Make sure your computer's IP address is in the same segment as your router's.

Q2. What can I do if a successfully-paired powerline device does not reconnect after it has been moved to a new location?

- A1. Try another socket and make sure it is on the same electrical circuit.
A2. Try to pair it again, and make sure the Powerline LED is on.
A3. Check for possible interference, such as a washer, air conditioner or other household appliance that may be too close to one of the powerline adapters or extenders. Plug it into the intergrated electrical socket to remove some electrical noise.



For more information, please visit our website:
<http://www.tp-link.com>

More advanced configurations, such as reset, firmware upgrade and QoS configuration, can be accessed through the Powerline Utility. You can install the Powerline Utility from the resource CD (for Windows only) or download it from the TP-LINK official website (for Windows and Mac OS X).