

## Attention

- Keep this device away from water, fire, humidity or hot environments.
- Do not heavily drop or impact this device.
- Do not attempt to extrude or pierce this device, which may cause it to short-circuit.
- Do not attempt to disassemble, modify or repair this device by yourself.
- Do not use a damaged power adapter or USB cable to charge this device.
- If the product appears to be bulging or shows other undesirable phenomena, stop using the product immediately and contact us or your dealer.
- Please recycle this device at an appointed disposal location.
- This product is not suitable for those lacking relevant knowledge and experience, please use under the supervision and guidance of professionals.
- Please charge this device once every three months to avoid shortening its battery life.
- Please use the recommended power adapter to charge this device. Power adapter is not provided by TP-LINK.

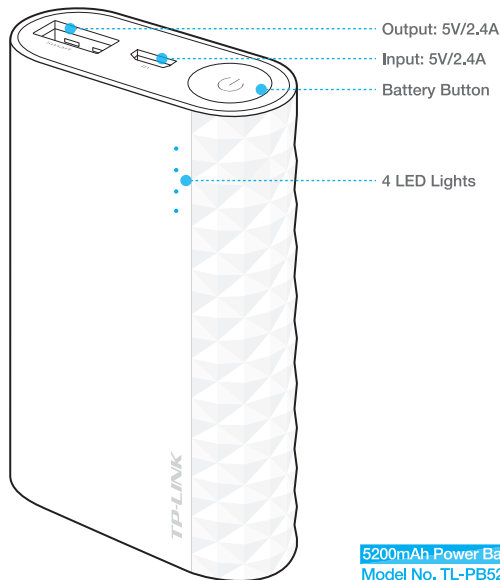
If you have any questions related to this product, please refer to the support page at [www.tp-link.com](http://www.tp-link.com)

7106505460 REV1.0.0

©2015 TP-LINK

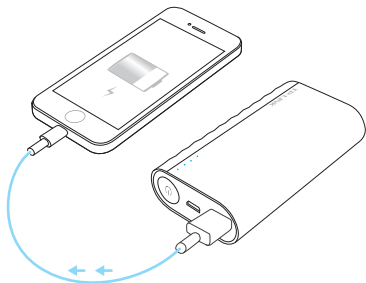
**TP-LINK®**  
The Reliable Choice

## User Guide




## Output Charge your devices

Connect your device via the charging cable to the Power Bank.



NOTE:  
The Power Bank, with a maximum 2.4A output, can charge almost any smart devices with 5V input at full speed.

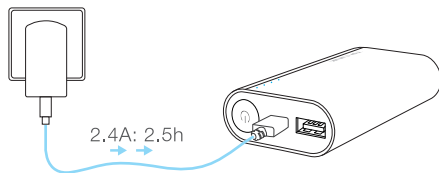
Press the Battery  Button to check the current battery level.

- 1 LED blinking
- 1 LED on
- Off

LED Display	Battery Level
● ● ● ●	75%~100%
● ● ● ○	50%~75%
● ● ○ ○	25%~50%
● ○ ○ ○	10%~25%
○ ○ ○ ○	0%~10%
○ ○ ○ ○	0

## Input Charge the Power Bank

Connect the Power Bank via a power adapter to an electrical power outlet.



NOTE:

- The Power Bank is compatible with 5V DC adapters. For more efficiency, we suggest using a 5V/2.4A power adapter to charge the Power Bank.
- The Power Bank cannot charge another device while it is charging.
- You can also charge the Power Bank via a computer's USB port, but it will take longer to charge.

	LED Display	Battery Level
• 1 LED blinking	● ● ● ●	0%~25%
• 1 LED on	● ● ● ○	25%~50%
	● ● ● ●	50%~75%
	● ● ● ○	75%~100%
	● ● ● ●	100%