

Quick Installation Guide

150Mbps Mini Wireless N USB Adapter

MODEL NO. TL-WN723N

7106506217 REV5.0.1

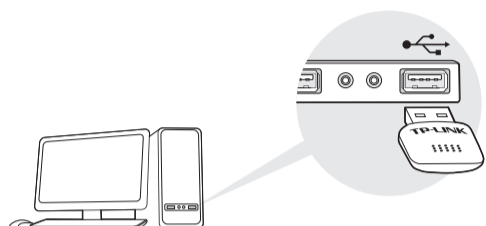


For more information, please visit <http://www.tp-link.com>.



1 Connect to a Computer

Insert the adapter into a USB port on your computer directly.



Note: In Windows XP, a Found New Hardware Wizard window will appear when the adapter is detected. Please click Cancel.

2 Install Driver and Utility

You can also download the driver and utility at www.tp-link.com.

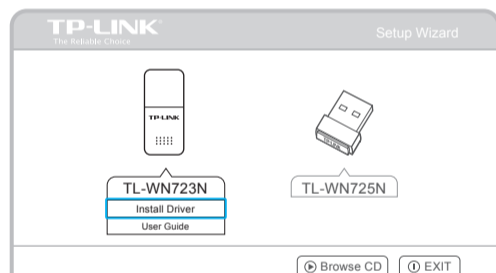
A. Insert the CD.



B. For Windows

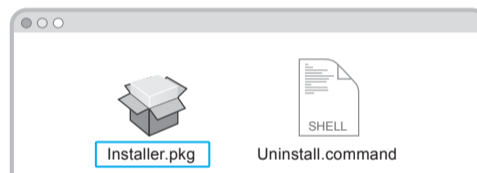
Run the **Autorun.exe** on the pop-up window. Select **TL-WN723N** and click **Install Driver**, then follow the InstallShield Wizard to complete the installation.

Note: The default setup type is **Install Driver Only**. You can later change to **Install TP-LINK Wireless Configuration Utility and Driver** for more functions.



For Mac OS X

Browse the CD, go to **TL-WN725N_WN723N > Mac OS X Driver**, unzip the **Mac OS X 10.7_10.10.zip** file and run the **Installer**. Follow the wizard to complete the installation.



3 Join a Wireless Network

For Windows

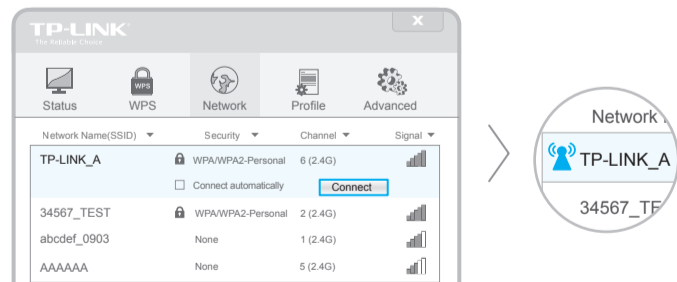
Option 1: Via Windows Wireless Utility

Click or (Network icon) on the taskbar, select your Wi-Fi network, and click **Connect**.

Note: In Windows XP, if you have installed TP-LINK Utility, you need to close TP-LINK Utility before using Windows Wireless Utility.

Option 2: Via TP-LINK Utility

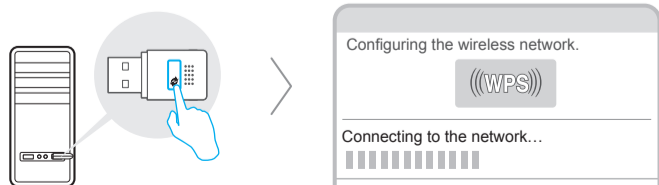
Select your Wi-Fi network from the utility window and click **Connect**. The symbol indicates a successful connection.



Option 3: Via Wi-Fi Protected Setup (WPS)

A. Press the WPS button on your router.

B. Within 2 minutes, press and hold the WPS button on the adapter until the following screen appears.



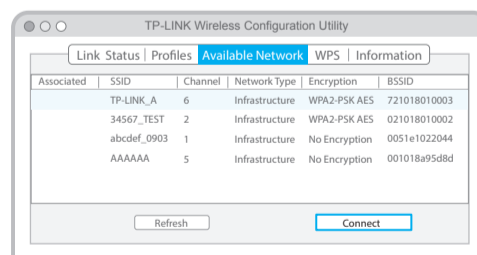
C. When you are prompted "Successfully connected to the network by WPS", click OK.

Note: For Windows Vista, TP-LINK Utility and WPS button are not supported, please use **Option 1: Via Windows Wireless Utility** to join a network.

For Mac OS X

Option 1: Via TP-LINK Utility

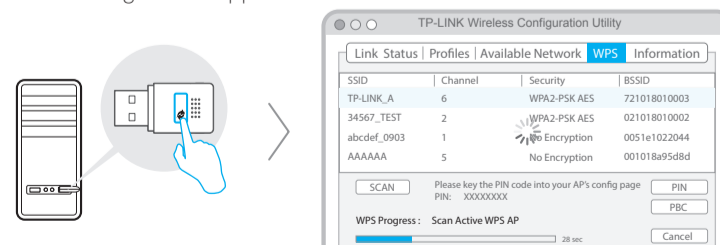
Select the **Available Network** tab of the pop-up utility window. Select your Wi-Fi network and click **Connect**. The connection status can be viewed on the **Link Status** screen.



Option 2: Via Wi-Fi Protected Setup (WPS)

A. Press the WPS button on your router.

B. Within 2 minutes, press and hold the WPS button on the adapter until the following screen appears.



C. When you are prompted "WPS Protocol Finished", click OK.