

Quick Installation Guide

150Mbps Wireless N USB Adapter

MODEL NO. TL-WN727N

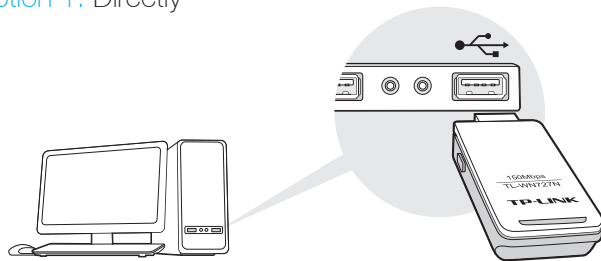
7106506330 REV5.0.1



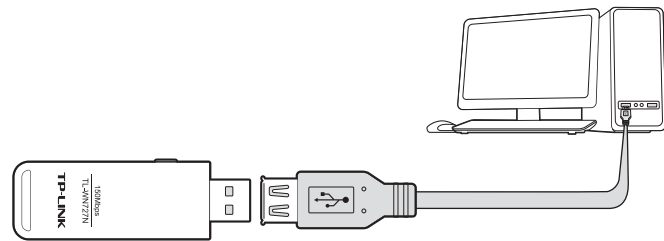
For more information, please visit our website: <http://www.tp-link.com>

1 Connect to a Computer

Option 1: Directly



Option 2: Via the USB Extension Cable

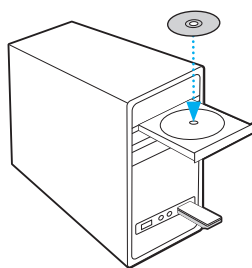


Note: In Windows XP, a Found New Hardware Wizard window will appear when the adapter is detected. Please click Cancel.

2 Install Driver and Utility

You can also download the driver and utility at www.tp-link.com.

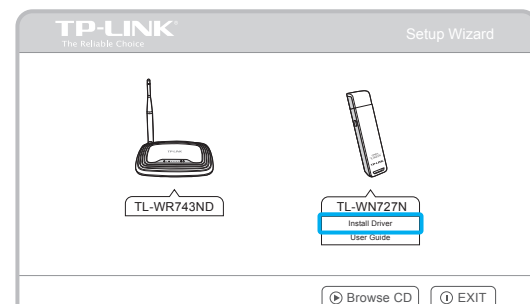
A: Insert the CD and run the **Autorun.exe** from the pop-up Autoplay window.



Note: In some operating systems, the CD screen will pop up automatically. Otherwise, run the CD manually.

B: Select TL-WN727N and click **Install Driver**, then follow the InstallShield Wizard to complete the installation.

Note: The default setup type is **Install Driver Only**. You can later change to **Install TP-LINK Wireless Configuration Utility and Driver** for more functions.



3 Join a Wireless Network

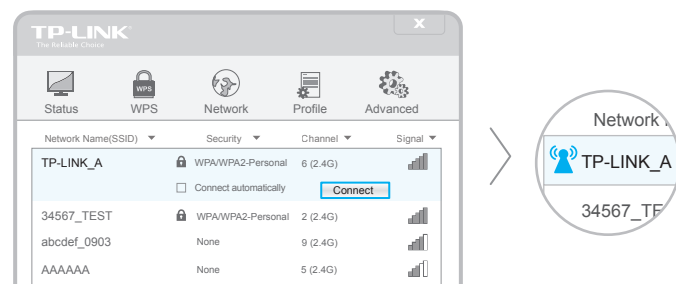
Option 1: Via Windows Wireless Utility

Click or (Network icon) on the taskbar, select your Wi-Fi network, and click **Connect**.

Note: In Windows XP, if you have installed TP-LINK Utility, you need to close TP-LINK Utility before using Windows Wireless Utility.

Option 2: Via TP-LINK Utility

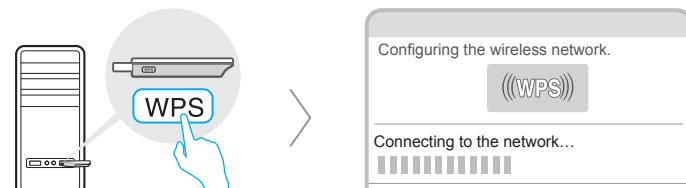
Select your preferred wireless network from the utility window and click **Connect**. The symbol indicates a successful connection.



Option 3: Via Wi-Fi Protected Setup (WPS)

A: Press the WPS button on your router.

B: Within 2 minutes, press and hold the WPS button on the adapter until the following screen appears.



C: When you are prompted "Successfully connected to the network by WPS!", click OK.