

Quick Installation Guide

300Mbps Mini Wireless N USB Adapter
MODEL NO. TL-WN823N

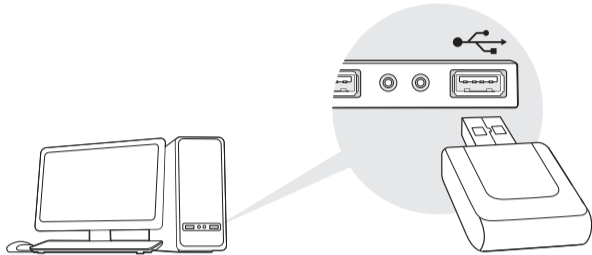


For more information, please visit our website
<http://www.tp-link.com>

7106506279 REV4.0.1

1 Connect to a Computer

Insert the adapter into a USB port on your computer directly.



Note: In Windows XP, a Found New Hardware Wizard window will appear when the adapter is detected. Please click **Cancel**.

2 Install Driver and Utility

You can also download the driver and utility at www.tp-link.com.

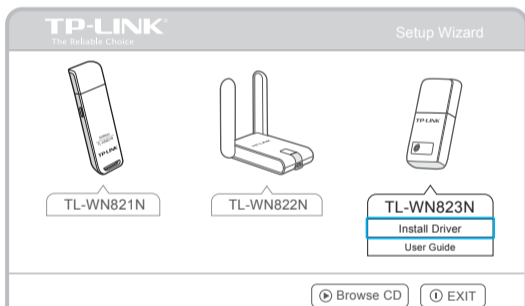
① Insert the CD.



② For Windows

Run the **Autorun.exe** on the pop-up window.
Select **TL-WN823N** and click **Install Driver**, then follow the InstallShield Wizard to complete the installation.

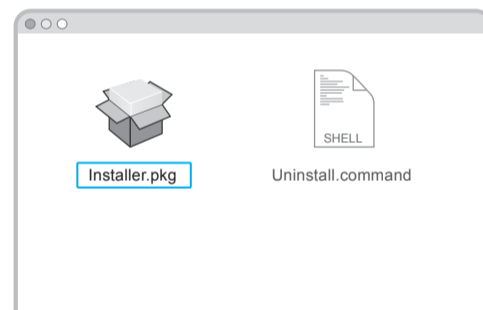
Note: The default setup type is **Install Driver Only**. You can later change to **Install TP-LINK Wireless Configuration Utility and Driver** for more functions.



For Mac OS X

Browse the CD, go to **TL-WN823N > Mac OS X Driver**, unzip the **Mac OS X 10.7_10.10.zip** file and run the Installer.

Follow the wizard to complete the installation.



3 Join a Wireless Network

For Windows

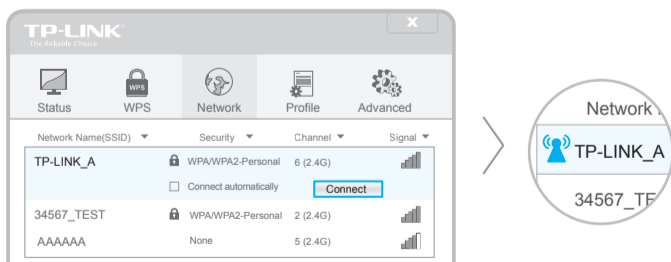
Option 1: Via Windows Wireless Utility

Click or (Network icon) on the taskbar, select your Wi-Fi network, and click **Connect**.

Note: In Windows XP, if you have installed TP-LINK Utility, you need to close TP-LINK Utility before using Windows Wireless Utility.

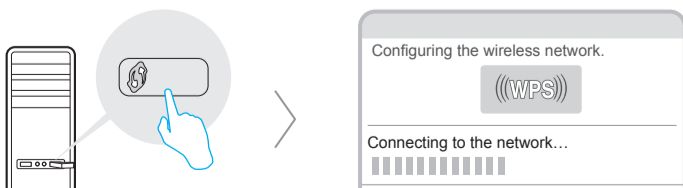
Option 2: Via TP-LINK Utility

Select your Wi-Fi network from the utility window and click **Connect**.
The symbol indicates a successful connection.



Option 3: Via Wi-Fi Protected Setup (WPS)

- Press the WPS button on your router.
- Within 2 minutes, press and hold the WPS button on the adapter until the following screen appears.

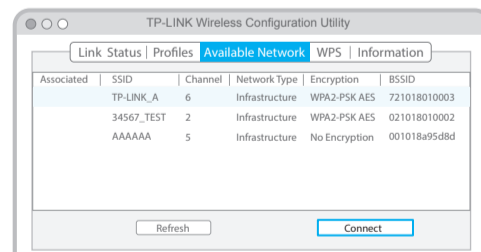


- When you are prompted "Successfully connected to the network by WPS!", click **OK**.

For Mac OS X

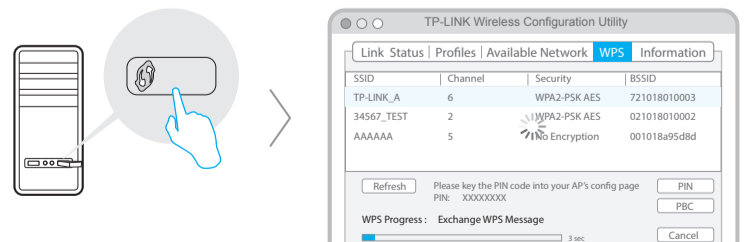
Option 1: Via TP-LINK Utility

- Select the **Available Network** tab of the pop-up utility window.
- Select your Wi-Fi network and click **Connect**. The connection status can be viewed on the Link Status screen.



Option 2: Via Wi-Fi Protected Setup (WPS)

- Press the WPS button on your router.
- Within 2 minutes, press and hold the WPS button on the adapter until the following screen appears.



- When you are prompted "WPS Protocol Finished", click **OK**.