

Quick Installation Guide

AV500 Passthrough Powerline Wi-Fi Extender

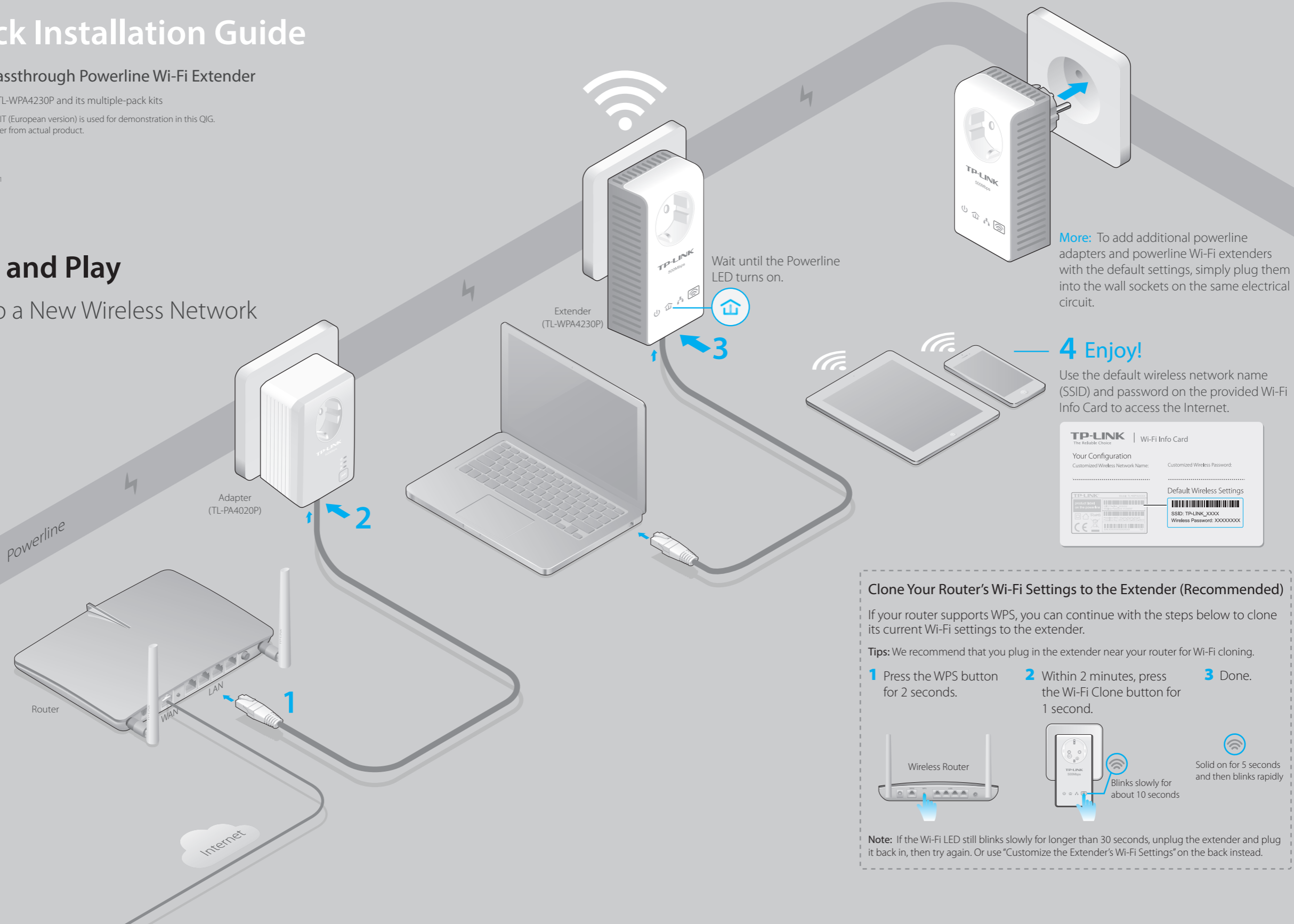
Applicable to TL-WPA4230P and its multiple-pack kits

* TL-WPA4230P KIT (European version) is used for demonstration in this QIG.
Image may differ from actual product.

7106505539 REV2.0.1

Plug and Play

Set Up a New Wireless Network



More: To add additional powerline adapters and powerline Wi-Fi extenders with the default settings, simply plug them into the wall sockets on the same electrical circuit.

4 Enjoy!

Use the default wireless network name (SSID) and password on the provided Wi-Fi Info Card to access the Internet.



Clone Your Router's Wi-Fi Settings to the Extender (Recommended)

If your router supports WPS, you can continue with the steps below to clone its current Wi-Fi settings to the extender.

Tips: We recommend that you plug in the extender near your router for Wi-Fi cloning.

- 1** Press the WPS button for 2 seconds.
- 2** Within 2 minutes, press the Wi-Fi Clone button for 1 second.
- 3** Done.



Note: If the Wi-Fi LED still blinks slowly for longer than 30 seconds, unplug the extender and plug it back in, then try again. Or use "Customize the Extender's Wi-Fi Settings" on the back instead.

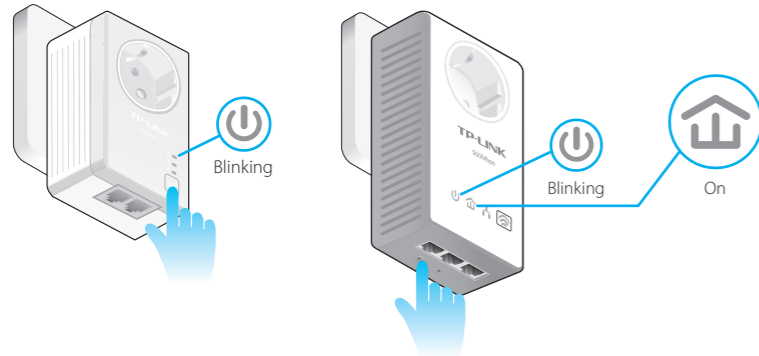
Set Up a Secure Powerline Network Using the Pair Button (Recommended)

You can create or join a secure powerline network using the Pair button on **two devices at a time**. The powerline network can support up to 16 powerline devices.

Tips: We recommend that you plug in the powerline devices near each other when pairing.

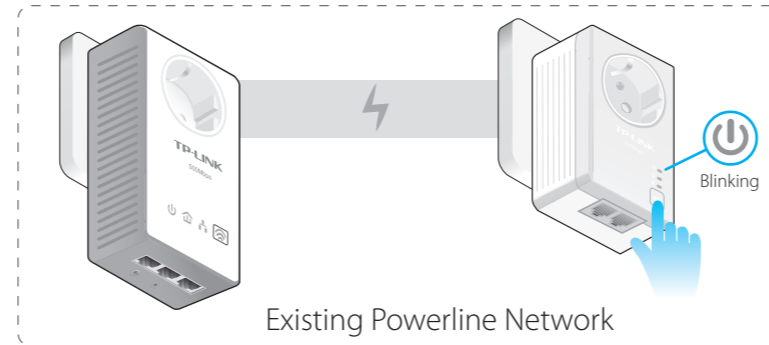
To create a secure powerline network:

- 1 Press the **Pair** button for 1 second.
- 2 Within 2 minutes, press the **Pair** button for 1 second.
- 3 Done.

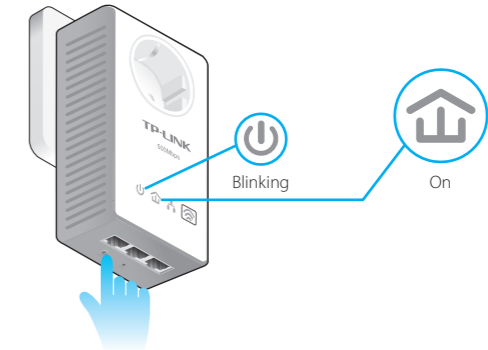


To join an existing secure powerline network:

- 1 Press the **Pair** button for 1 second on **any** powerline device in the existing powerline network.
- 2 Within 2 minutes, press the **Pair** button for 1 second.
- 3 Done.



- 2 Within 2 minutes, press the **Pair** button for 1 second.
- 3 Done.



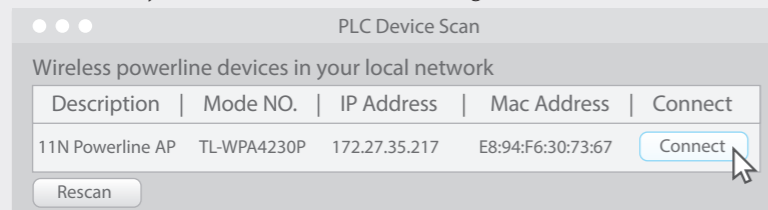
Customize the Extender's Wi-Fi Settings (Optional)

- 1 Connect your computer to the extender wirelessly or via an Ethernet cable.

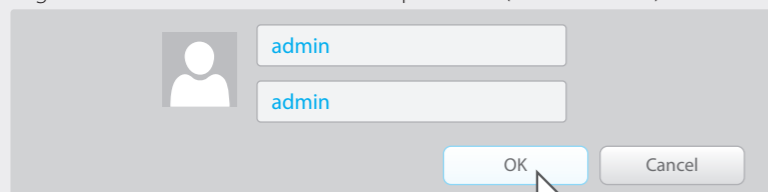


- 2 Find and download the compatible version of utility for your powerline extender at www.tp-link.com.

- 3 Start the utility. Choose the model to be configured and click **Connect**.

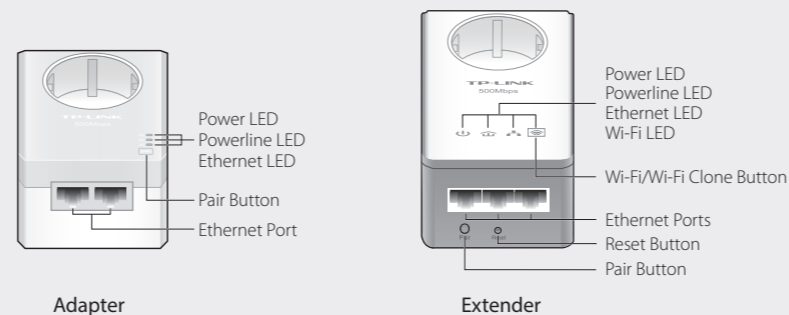


- 4 Log in with the default user name and password (**admin/admin**).



- 5 Go to **Wireless > Wireless Settings** to set a new SSID, then go to **Wireless > Wireless Security** to set a new Wi-Fi password.

LED and Button Legend



LED	STATUS	DESCRIPTION
Power	On/Off	The device is on or off.
	Blinking	Once every second: Pairing is in process. Once every 15 seconds: Power-Saving Mode is on. (Powerline adapter only)
	On	The device is connected to the powerline network.
Powerline	Off	The device is not connected to the powerline network or is in Power-Saving Mode.
	Blinking	The device is transferring data.
Ethernet	On/Off	The Ethernet port is connected or not connected.
	Blinking	The Ethernet port is transferring data. (Powerline adapter only)
Wi-Fi	Blinking	Rapidly: The Wi-Fi is working properly. Once every second: Wi-Fi cloning is in process.
	Off	The Wi-Fi is disabled.

ITEM	DESCRIPTION
Wi-Fi/Wi-Fi Clone	Press and hold for 1 second to start Wi-Fi cloning.
	Press and hold for 5 seconds to turn the Wi-Fi on or off.
Pair	Press and hold for 1 second to start the pairing process.
	Press and hold for 10 seconds to leave the powerline network.
Reset	Press and hold for 10 seconds to restore the extender's settings to factory defaults.
Integrated Electrical Socket	Used as a pass-through AC outlet to power other devices. It also reduces some electrical noise that may interfere with powerline performance.

FAQ (Frequently Asked Questions)

Q1. How do I reset my extender?

A. With the extender powered on, use a pin to press and hold the Reset button until all LEDs go off. When the Power LED turns on and the Wi-Fi LED starts to blink rapidly, the reset process is complete.

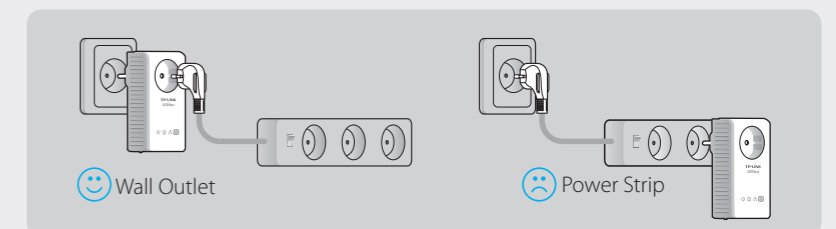
Q2. How to troubleshoot if there is no Internet connection in my powerline network?

- Make sure all adapters and extenders are on the same electrical circuit.
- Make sure the Powerline LEDs light up on all of your adapters and extenders. If they do not, pair your adapters and extenders again according to "Set Up a Secure Powerline Network By Pairing".
- Make sure all hardware connections are correctly and securely connected.
- Check if you have an Internet connection by connecting the computer directly to the modem or router.
- Make sure your computer's IP address is in the same segment as your router's.

Q3. What can I do if a successfully-paired extender does not reconnect after it has been moved to a new location?

- Try another socket and make sure it is on the same electrical circuit.
- Try to pair it again with another adapter or extender, and make sure the Powerline LED is on before moving it to a new location.
- Check for possible interference, such as a washer, air conditioner or other household appliance that may be too close to one of the powerline adapters or extenders. Plug it into the integrated electrical socket to remove some electrical noise.

Attention



For more information, please visit our website:
<http://www.tp-link.com>